

521 CMR 25.00: ENTRANCES

25.1 GENERAL

All public *entrance(s)* of a *building* or tenancy in a *building* shall be *accessible*. Public *entrances* are any *entrances* that are not solely service *entrances*, loading *entrances*, or *entrances* restricted to employee use only.

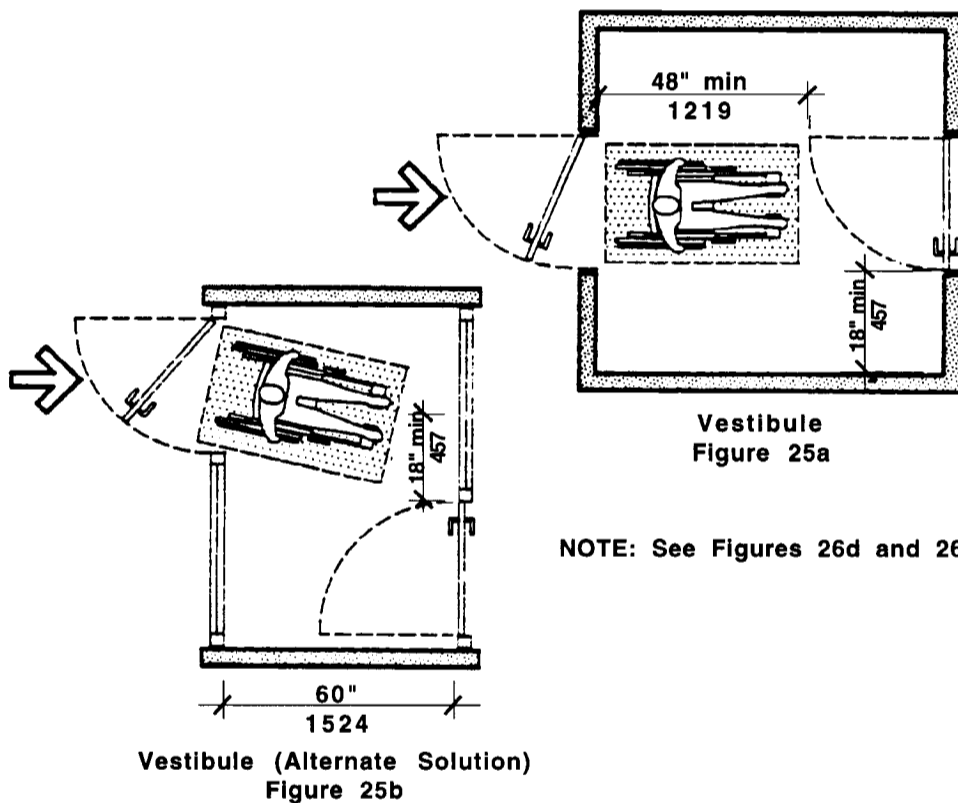
25.1.1 Service *entrances*: If the only *entrance* to a *building*, or tenancy in a *facility*, is a service *entrance*, that *entrance* shall be *accessible*.

25.2 APPROACH

The approach to an *accessible entrance* shall be a paved *walk* or *ramp* with a slip resistant surface, uninterrupted by steps. *Entrance(s)* shall have a *level space* on the interior and exterior of the *entrance* doors complying with **Fig. 25a and 25b**.

25.3 VESTIBULES

Between any two hinged or pivoted doors, there shall be a minimum of 48 inches (48" = 1219mm) plus the width of any door swinging into the space. See **Fig. 25a and 25b**.

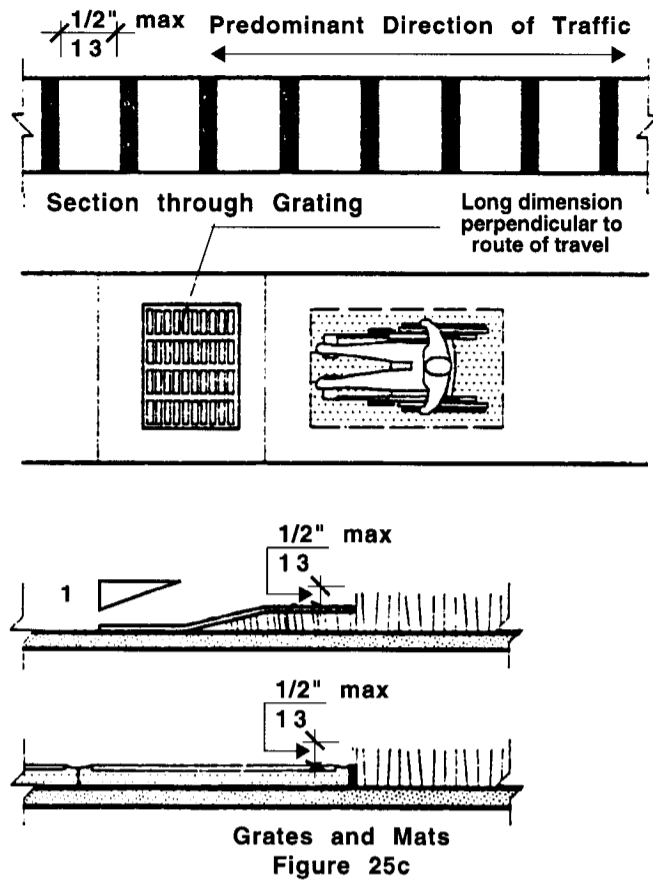


NOTE: See Figures 26d and 26e

25.4 MATS AND GRATES

Door mats 1/2 inch (1/2" = 13mm) thick or less shall be securely anchored at all edges to avoid tripping. Door mats between 1/4 inch (1/4" = 6mm) and 1/2 inch (1/2" = 13mm) thick must be secured with beveled edging that slopes no more than 1:2 (50%). Door mats thicker than 1/2 inch (1/2" = 13mm) shall be recessed. Grates shall have openings not exceeding 1/2 inch (1/2" = 13mm) in the path of travel. See **Fig. 25c**.

25.00: continued



25.5 PROTRUDING OBJECTS

Objects that protrude into entranceways, (suspended lights, signs, fixtures, door closers, etc.) shall comply with **521 CMR 20.6, Protruding Objects**.

25.6 SIGNAGE

Any *entrance/exit* of a *facility* not *accessible* by persons in wheelchairs shall have a sign clearly indicating the location of the *accessible entrance/exit*.