

521 CMR 25.00: ENTRANCES

25.1 GENERAL

All public *entrance(s)* of a *building* or tenancy in a *building* shall be *accessible*. Public *entrances* are any *entrances* that are not solely service *entrances*, loading *entrances*, or *entrances* restricted to employee use only.

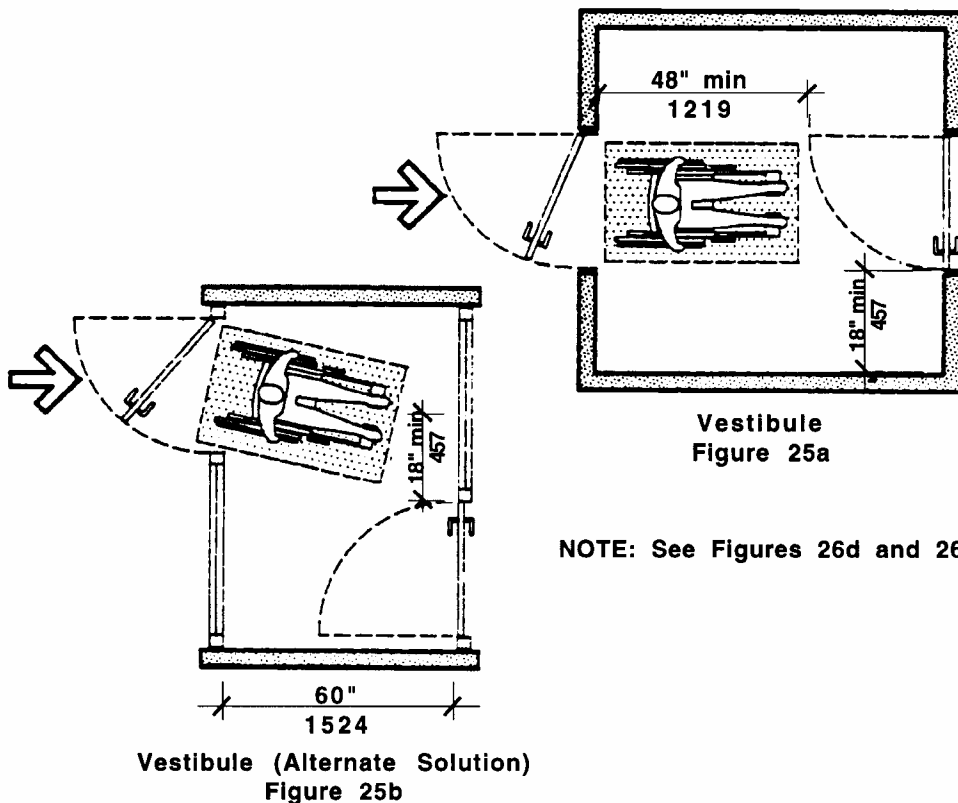
25.1.1 Service *entrances*: If the only *entrance* to a *building*, or tenancy in a *facility*, is a service *entrance*, that *entrance* shall be *accessible*.

25.2 APPROACH

The approach to an *accessible entrance* shall be a paved *walk* or *ramp* with a slip resistant surface, uninterrupted by steps. *Entrance(s)* shall have a *level space* on the interior and exterior of the *entrance* doors complying with **Fig. 25a and 25b**.

25.3 VESTIBULES

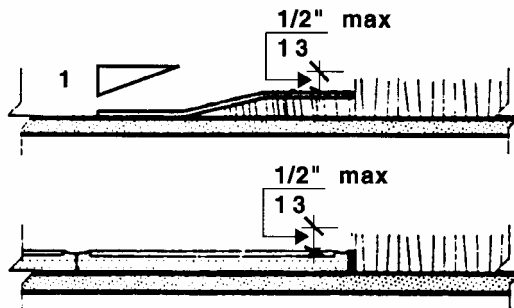
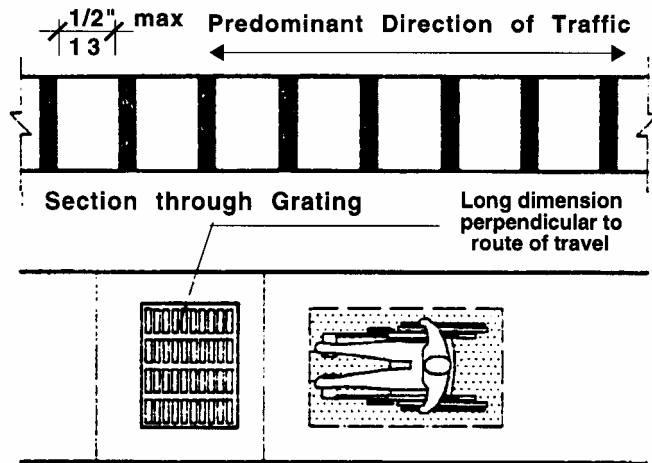
Between any two hinged or pivoted doors, there shall be a minimum of 48 inches (48" = 1219mm) plus the width of any door swinging into the space. See **Fig. 25a and 25b**.



25.00: ENTRANCES

25.4 MATS AND GRATES

Door mats 1/2 inch (1/2" = 13mm) thick or less shall be securely anchored at all edges to avoid tripping. Door mats between 1/4 inch (1/4" = 6mm) and 1/2 inch (1/2" = 13mm) thick must be secured with beveled edging that slopes no more than 1:2 (50%). Door mats thicker than 1/2 inch (1/2" = 13mm) shall be recessed. Grates shall have openings not exceeding 1/2 inch (1/2" = 13mm) in the path of travel. See Fig. 25c.



Grates and Mats
Figure 25c

25.5 PROTRUDING OBJECTS

Objects that protrude into entranceways, (suspended lights, signs, fixtures, door closers, etc.) shall comply with 521 CMR 20.6, Protruding Objects.

25.6 SIGNAGE

Any entrance/exit of a facility not accessible by persons in wheelchairs shall have a sign clearly indicating the location of the accessible entrance/exit.