

521 CMR 34.00: STORAGE

34.1 GENERAL

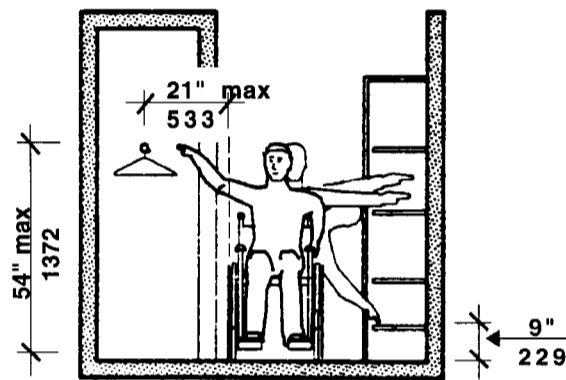
Fixed storage *facilities* such as cabinets, shelves, closets, and drawers that are required to be *accessible* shall comply with the following requirements.

34.2 CLEAR FLOOR SPACE

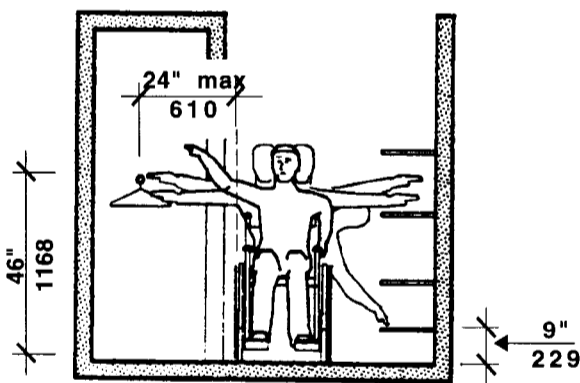
A *clear floor space* that allows either a forward or parallel approach by a person using a wheelchair shall be provided at *accessible storage facilities*.

34.3 HEIGHT

Accessible storage spaces shall be within at least one of the reach ranges specified in **521 CMR 6.5, Forward Reach** and **521 CMR 6.6, Side Reach**. See **Figure 6k, 6l, 6m and 6n**. Clothes rods or shelves shall be a maximum of 54 inches (54" = 1372mm) above the finish floor for a side approach. Where the distance from the wheelchair to the clothes rod or shelf exceeds ten inches (10" = 254mm) (as in closets without *accessible* doors), the height and depth to the rod or shelf shall comply with **Fig. 34a and 34b**.



Reach Ranges
Figure 34a



Reach Ranges
Figure 34b

34.4 HARDWARE

Hardware for *accessible storage facilities* shall comply with **521 CMR 26.11, Door Hardware**. Touch latches and U-shaped pulls are acceptable. See **Fig. 34c**.

34.00: continued

