

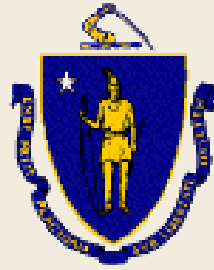


# Mount Auburn Street Corridor Study



September 15, 2016  
Russell Youth  
Community Center





# Commonwealth of Massachusetts

Governor  
**Charles D. Baker**

Lieutenant Governor  
**Karyn E. Polito**

Energy and Environmental Secretary  
**Matthew A. Beaton**

Department of Conservation and Recreation Commissioner  
**Leo P. Roy**



## **DCR Mission Statement**

*To protect, promote and enhance our  
common wealth of natural, cultural  
and recreational resources  
for the well-being of all.*

# Agenda

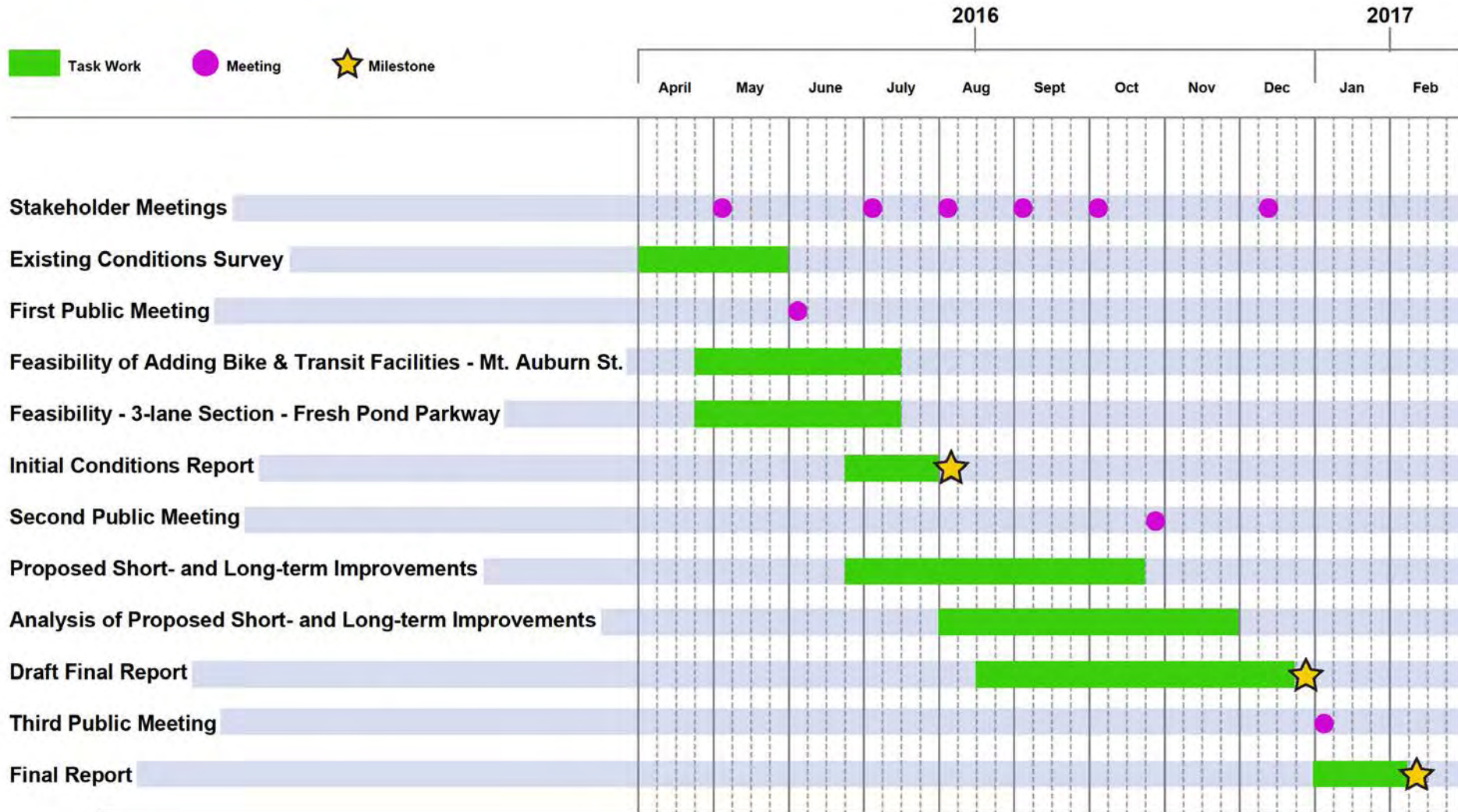
- Welcome
- Mount Auburn at Belmont Concept Draft
- Remaining Edits to Long Term Draft Concept
- Short Term Concept Draft at Mount Auburn and Fresh Pond Parkway
- First Look: Transit Priority Benefits
- Plaza Design Charrette



# Agenda



# Schedule



## Ground Rules Reminder

*The Stakeholder Group is most efficient when everyone maintains basic rules of civility. Let other people finish what they have to say, whether they are members of DCR, other group members, or consultants. We ask that you raise your hand to speak; we promise to get to you in a timely basis.*

*Everyone will have an equal opportunity to participate in group discussions.*



# **PLEASE NOTE:**

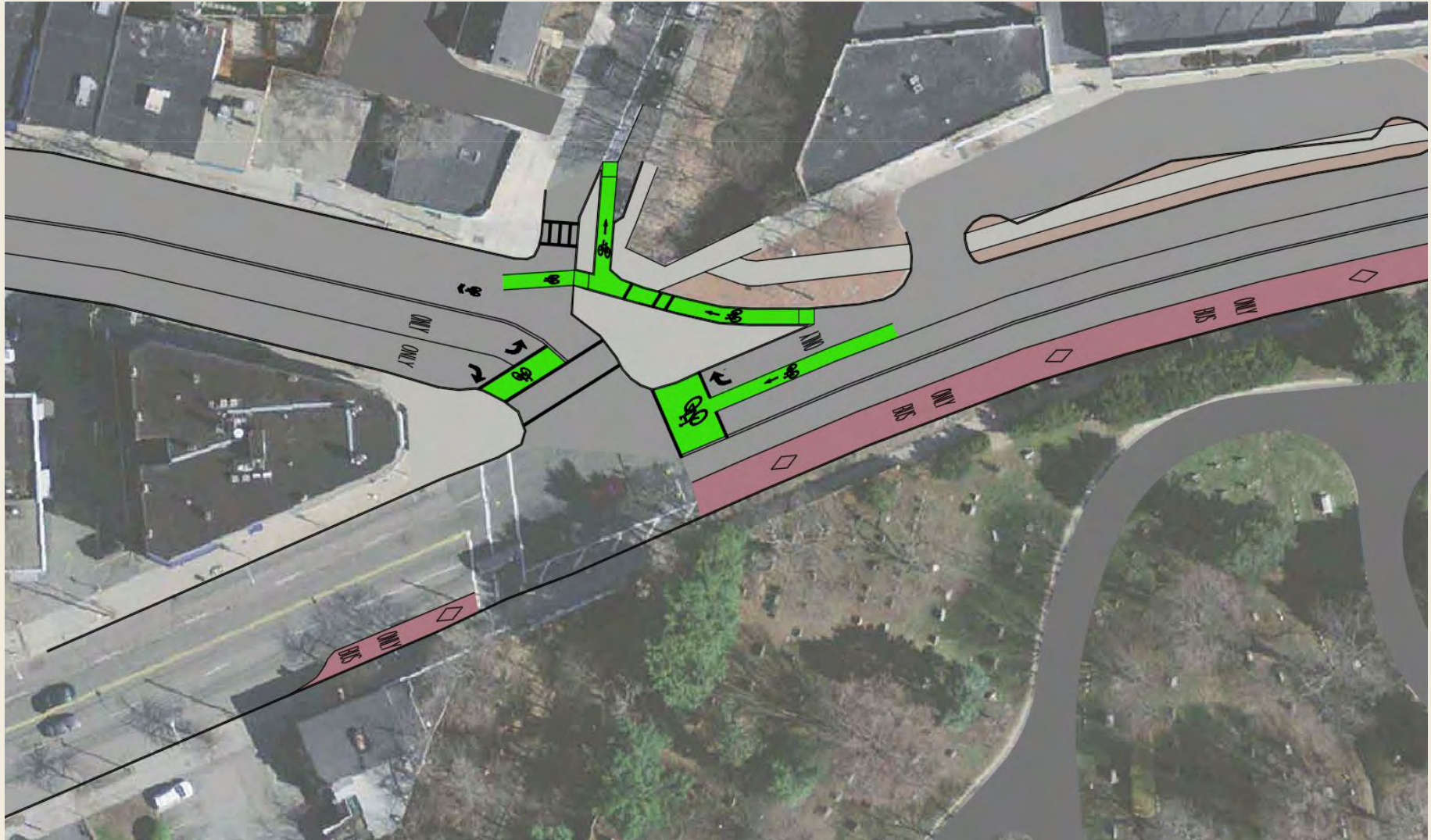
The following concepts are drafts; works in progress shown only for the purpose of collecting public feedback for their improvement.





# **Mt. Auburn Long-Term Draft Concept (Western Section)**

# Mt. Auburn Street at Belmont Street

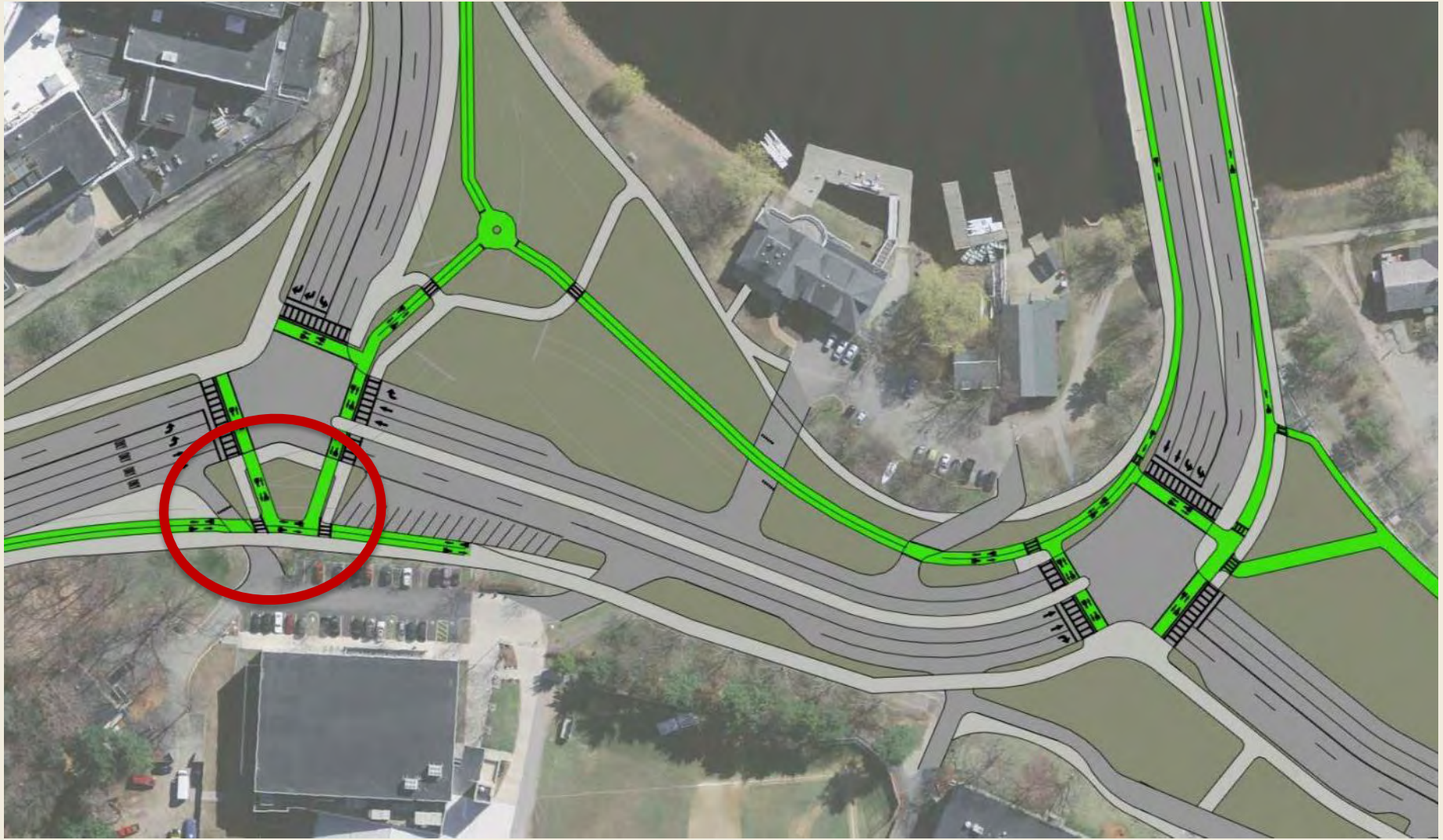




# Remaining Edits to Long-Term Draft Concept

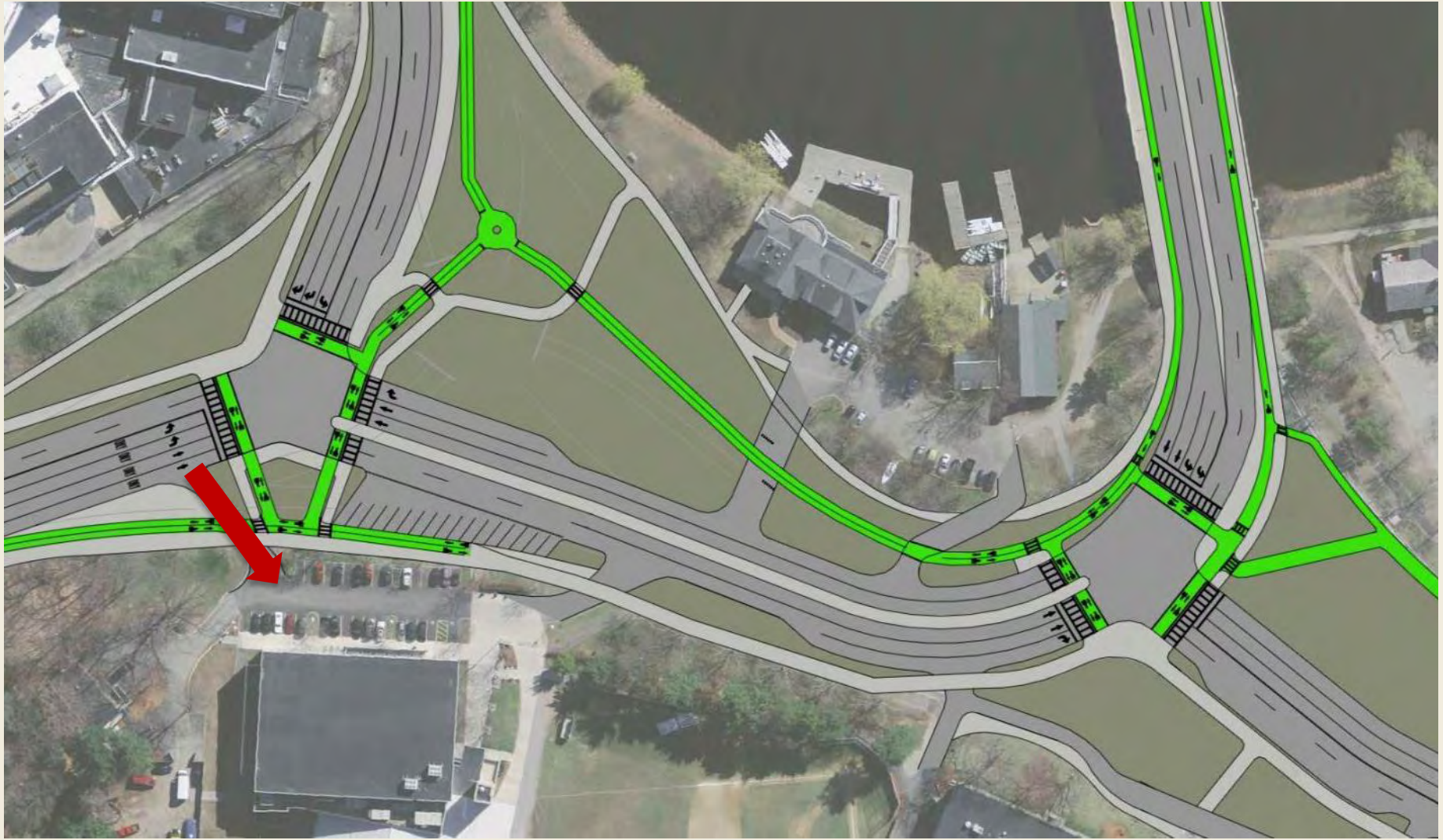


# Two-T Alternative – Move BB&N Gym Driveway



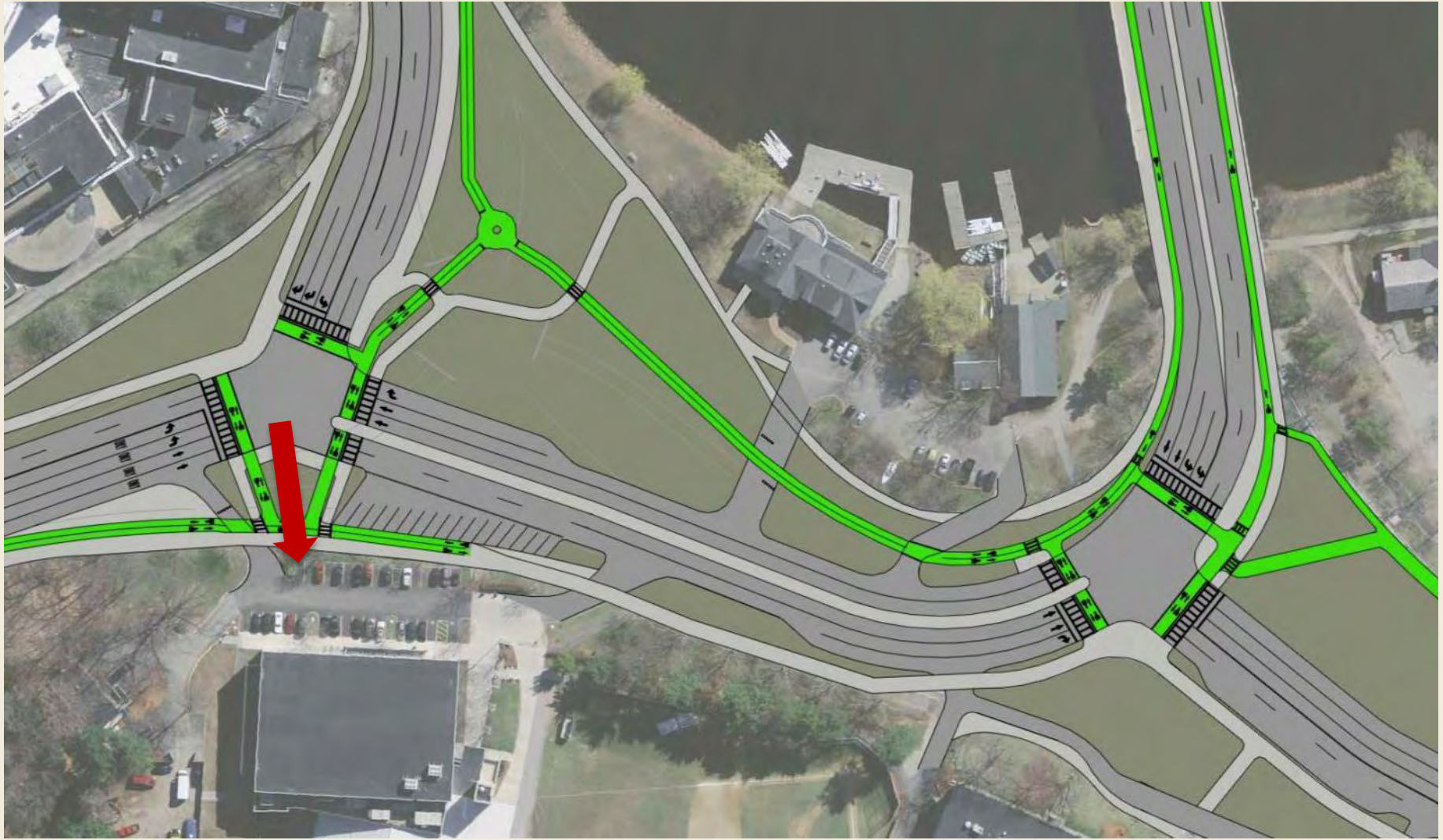


# Two-T Alternative – Move BB&N Gym Driveway



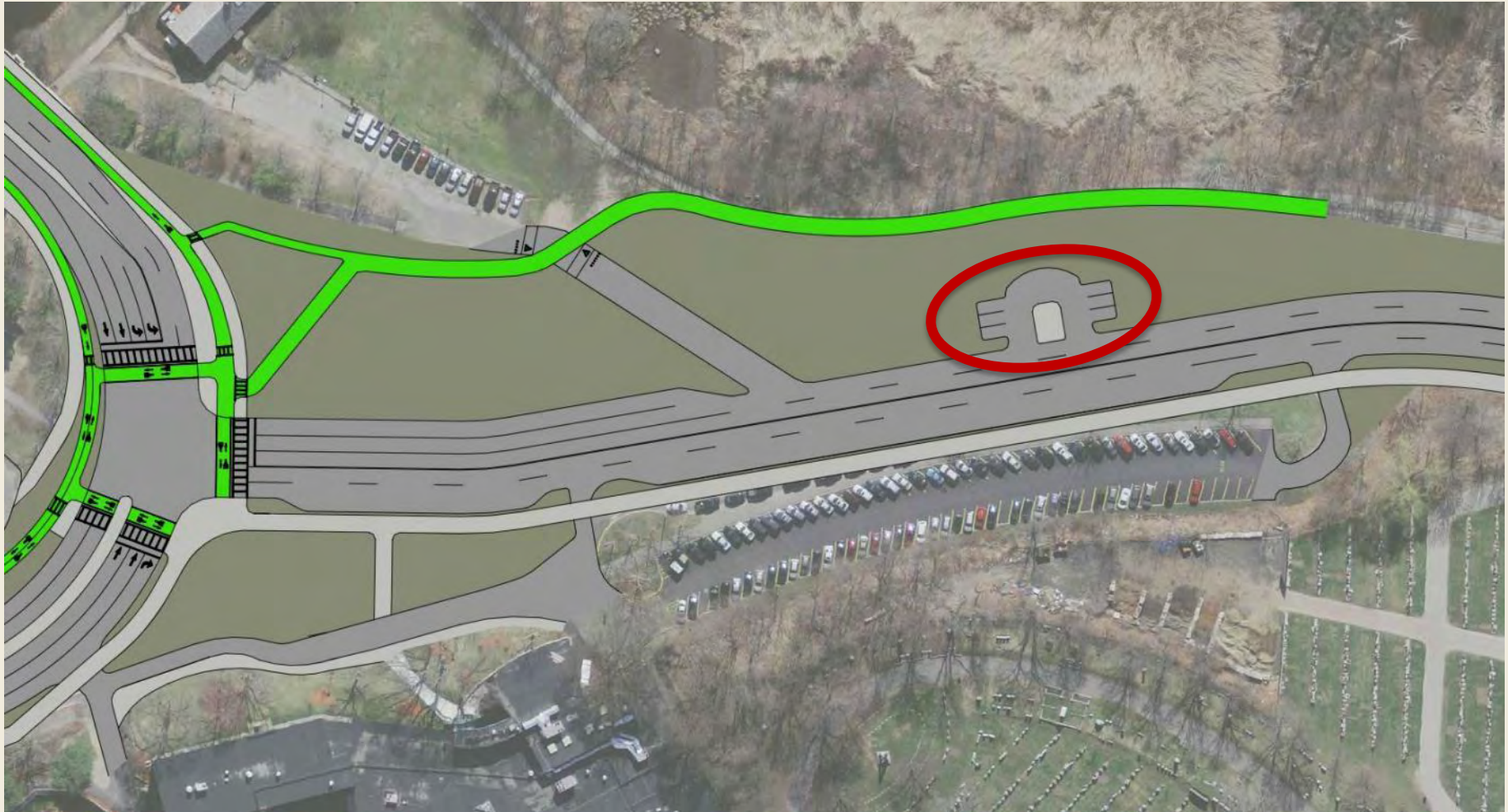


# Two-T Alternative – Move BB&N Gym Driveway



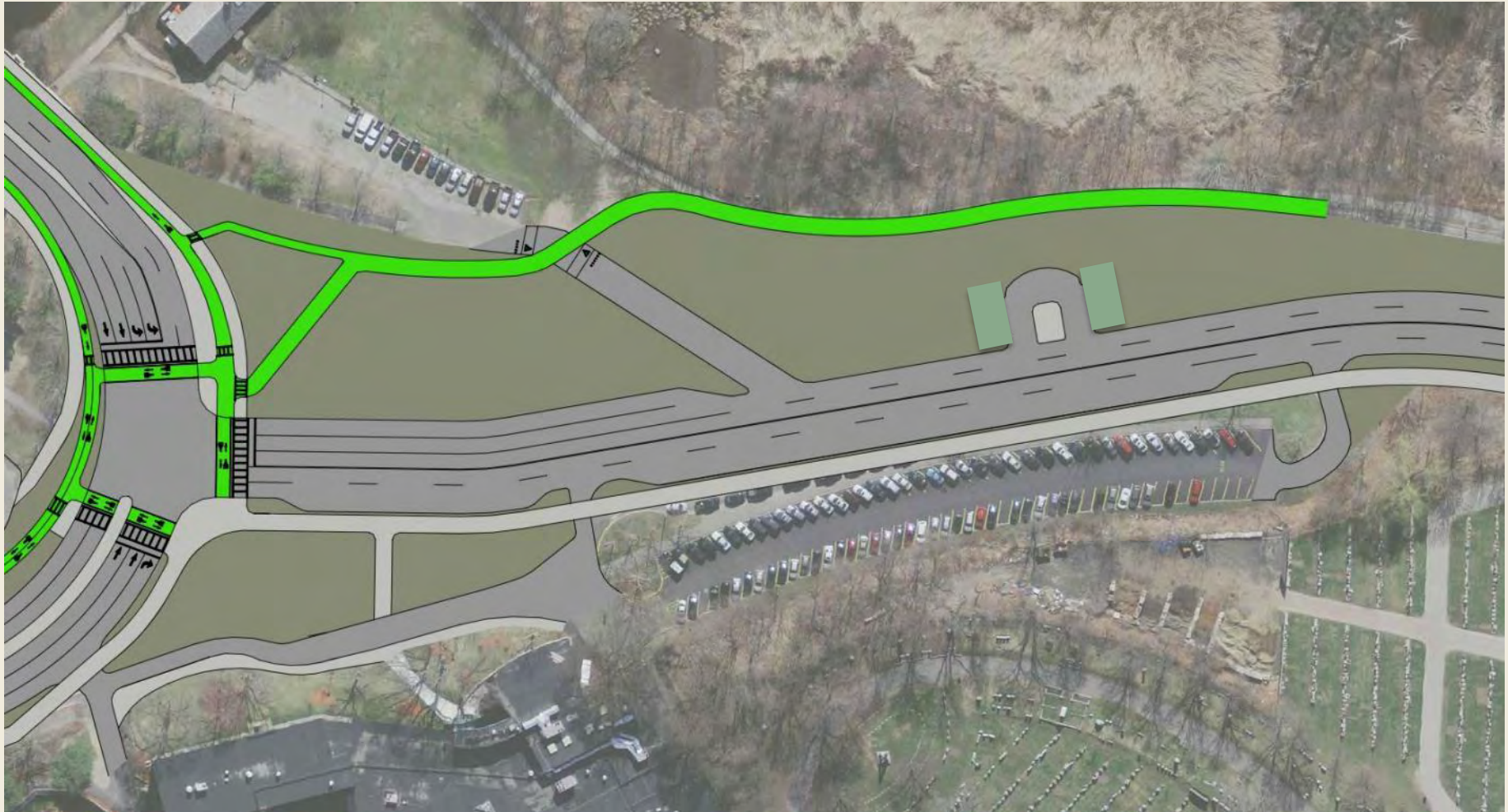


# Two-T Alternative - Remove parking from turn-around



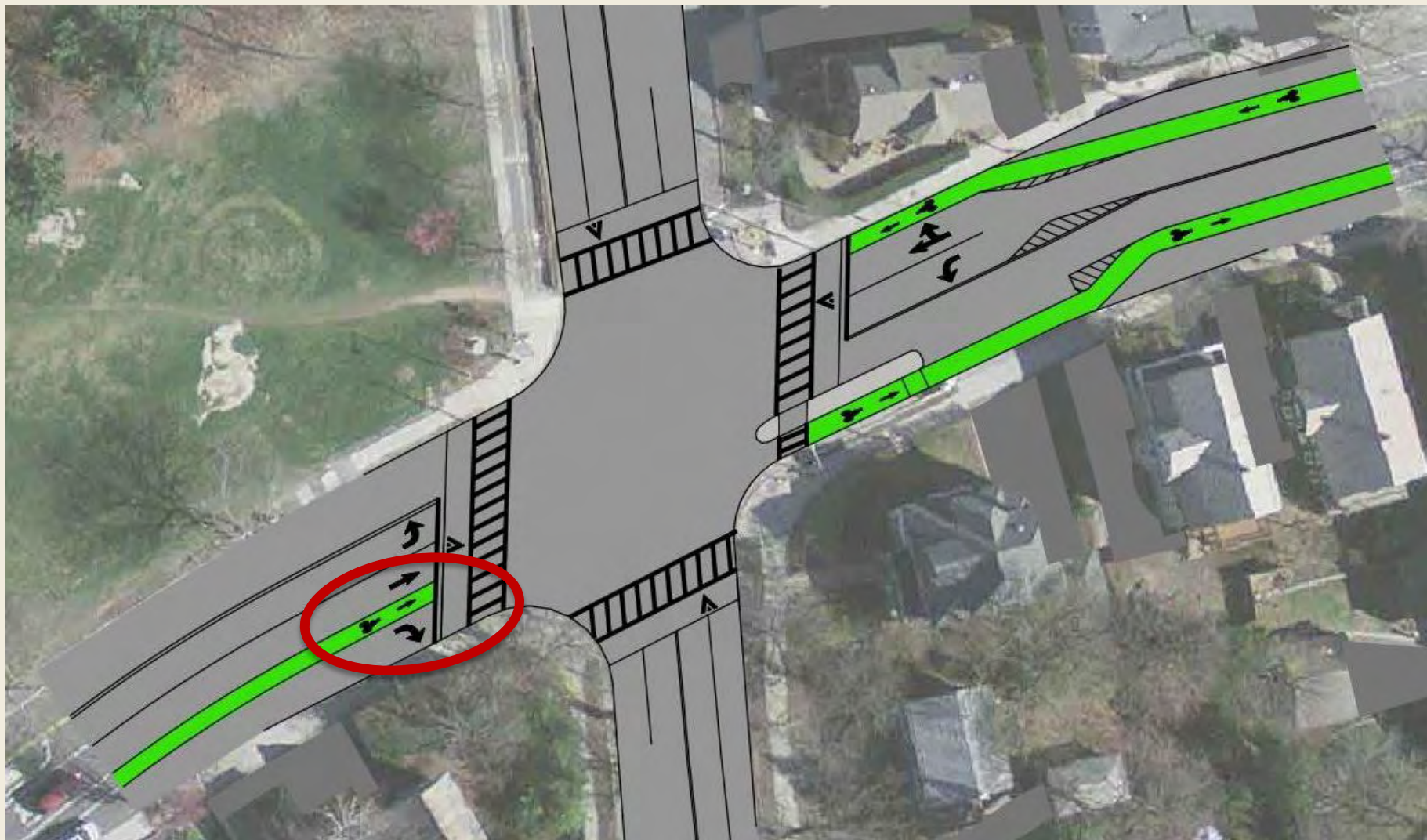


# Two-T Alternative - Remove parking from turn-around

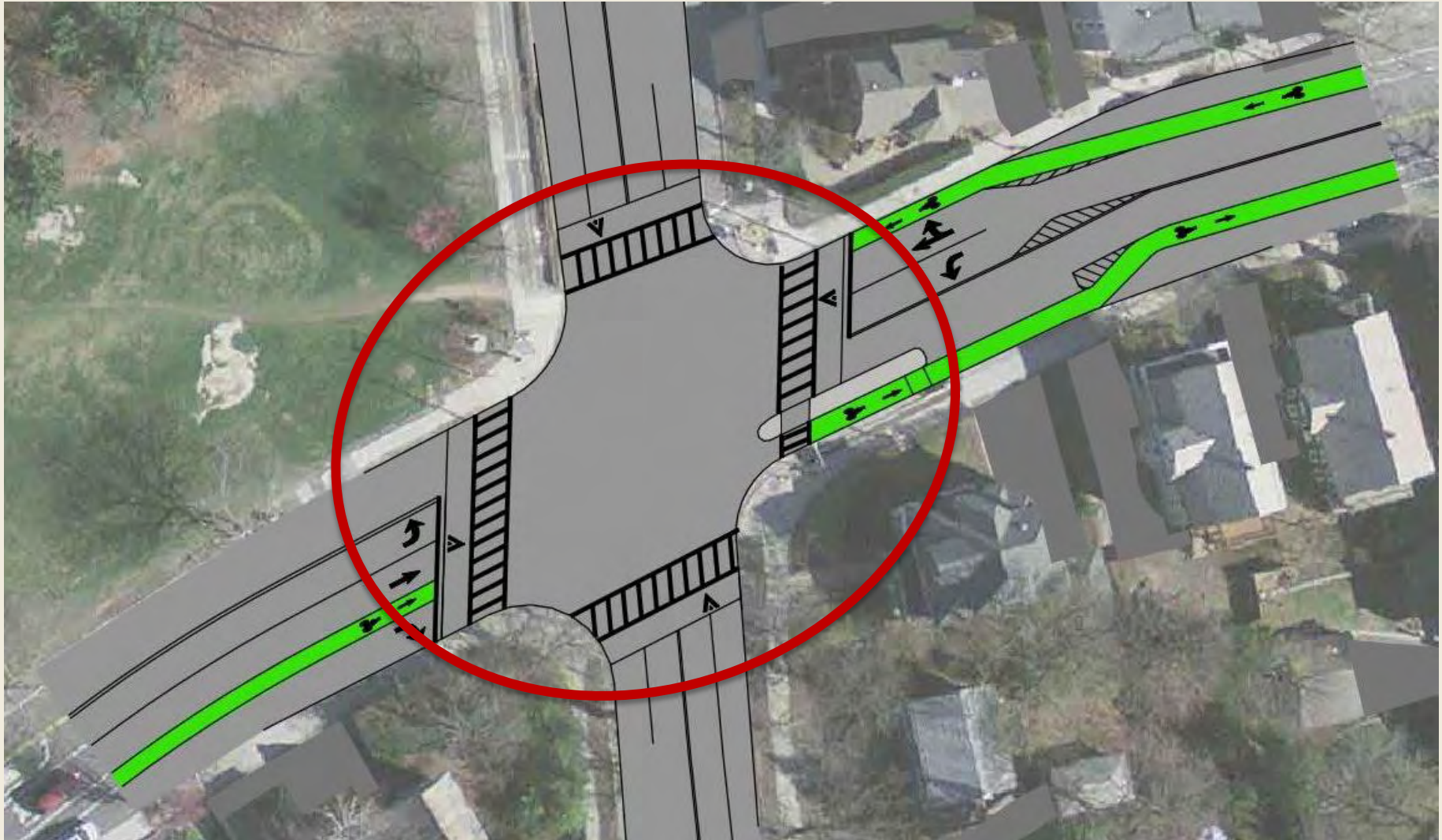




# Fresh Pond Parkway at Huron Avenue – Signal Protection



# Fresh Pond Parkway at Huron Avenue – Leading Ped Interval





## Remaining Decision Points We Will Analyze

- Road Diet on Mt. Auburn between Brattle Street and Fresh Pond Parkway would remove eastbound or westbound lane?
- 4:3 Road Diet or No Road Diet on Fresh Pond Parkway Huron to Brattle?
- Lefts allowed or No-Lefts allowed onto Larchwood from Fresh Pond Parkway?
- T-up or Not T-up at Mt. Auburn and Brattle?



# **Mt. Auburn & Fresh Pond Parkway Short-Term Draft Concept**

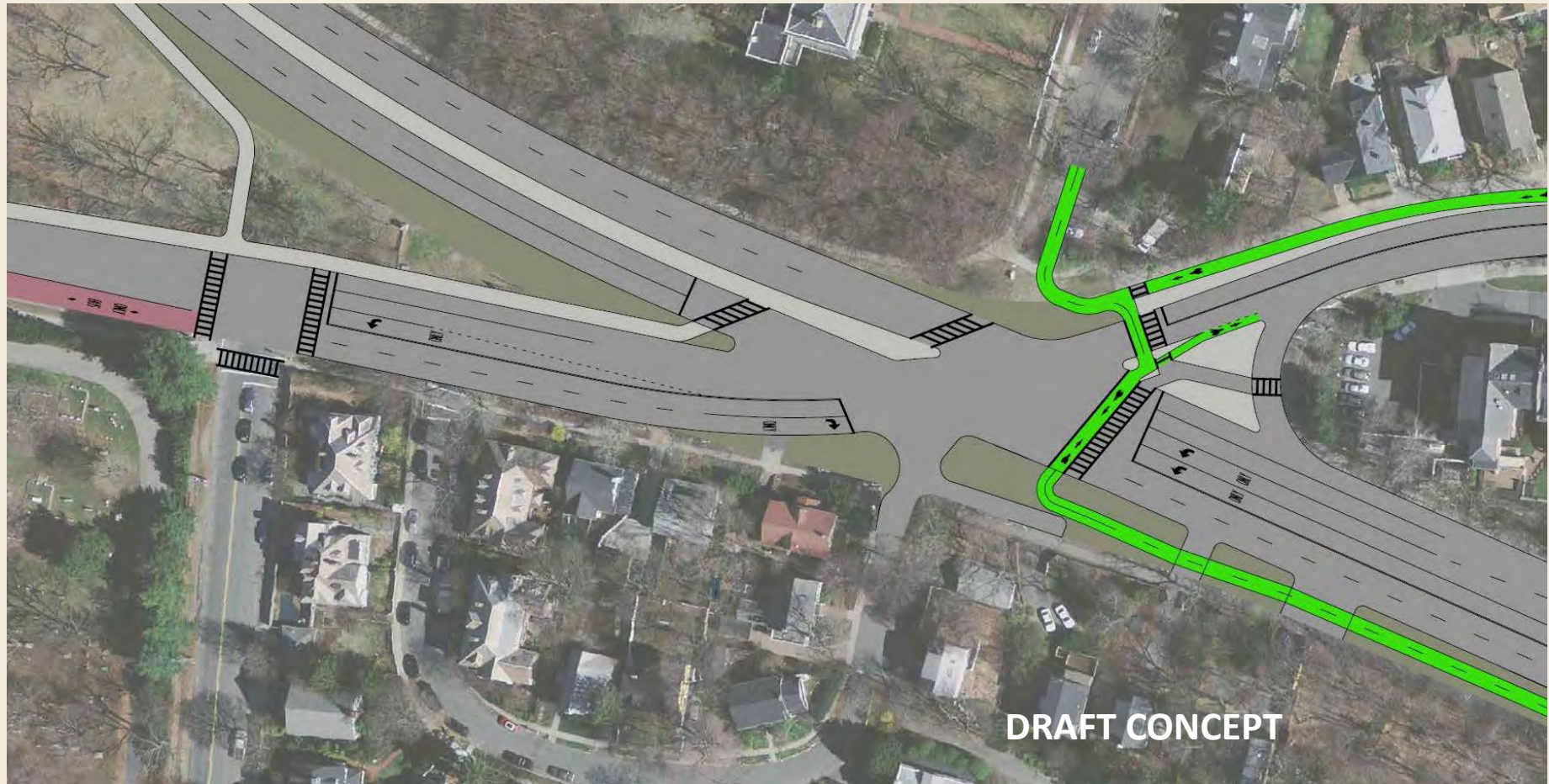


# Mount Auburn Street at Fresh Pond Parkway – Existing



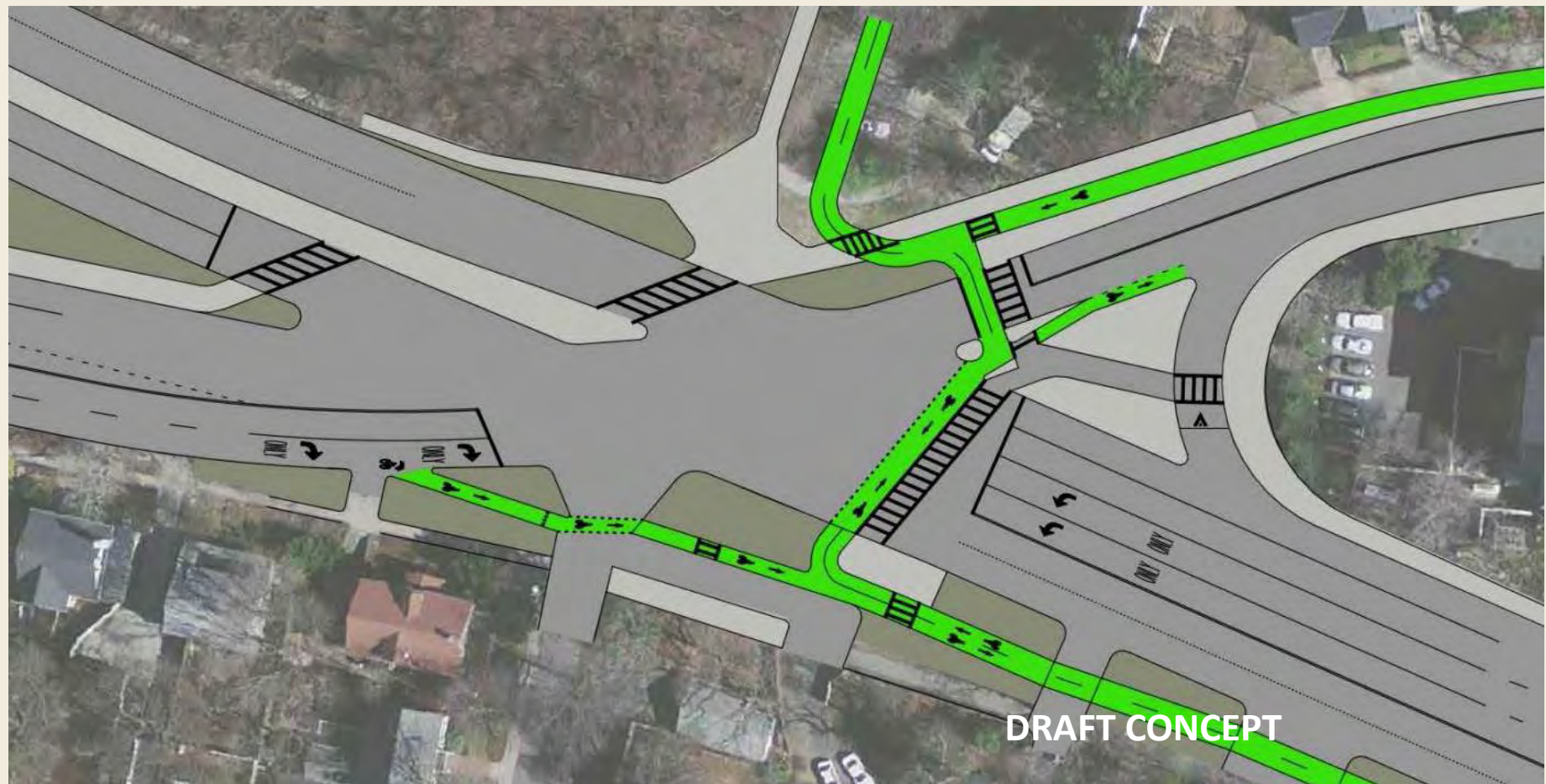


# Mount Auburn Street at Fresh Pond Parkway — Long-Term



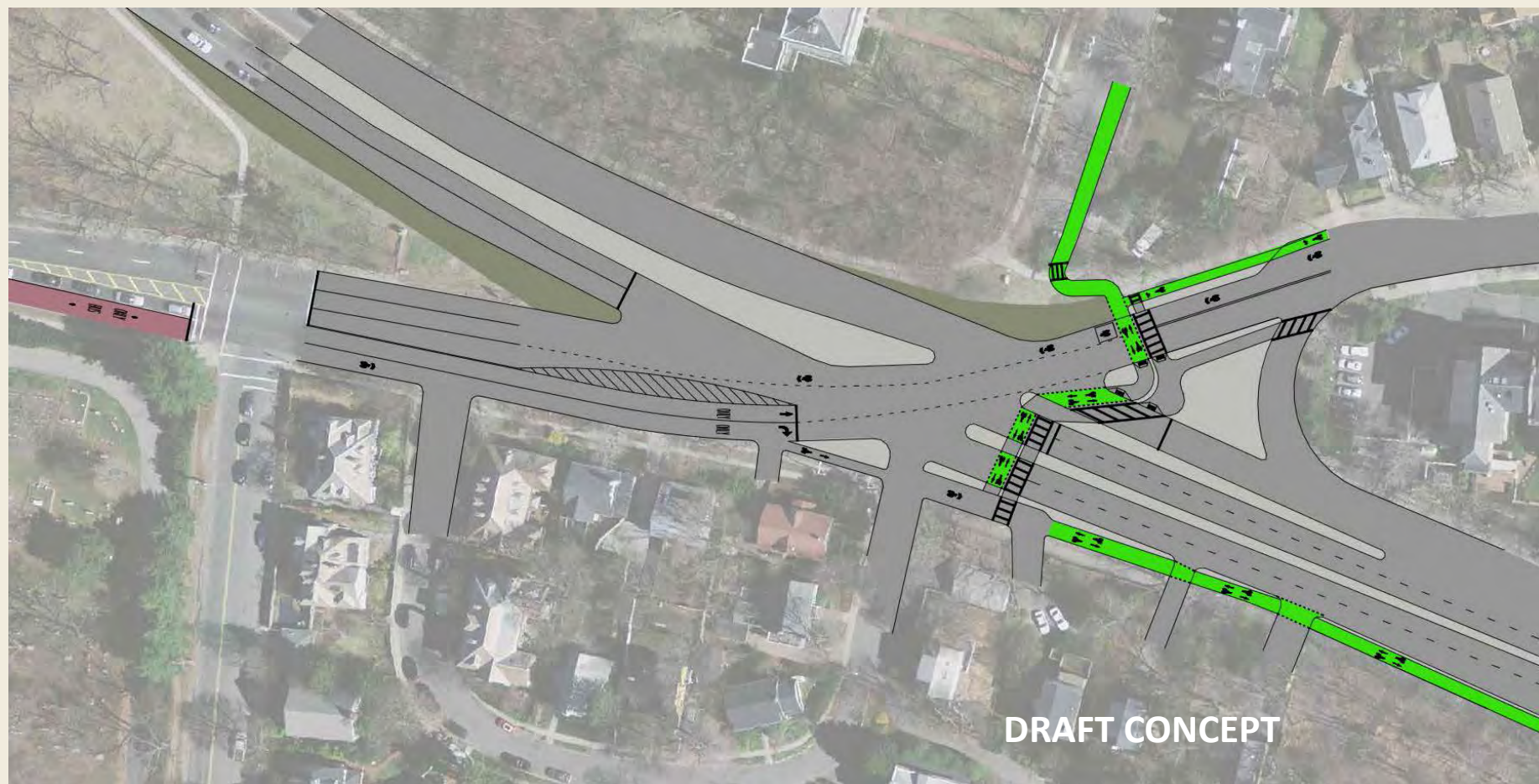


# Mt Auburn and Fresh Pond with Bike Connection

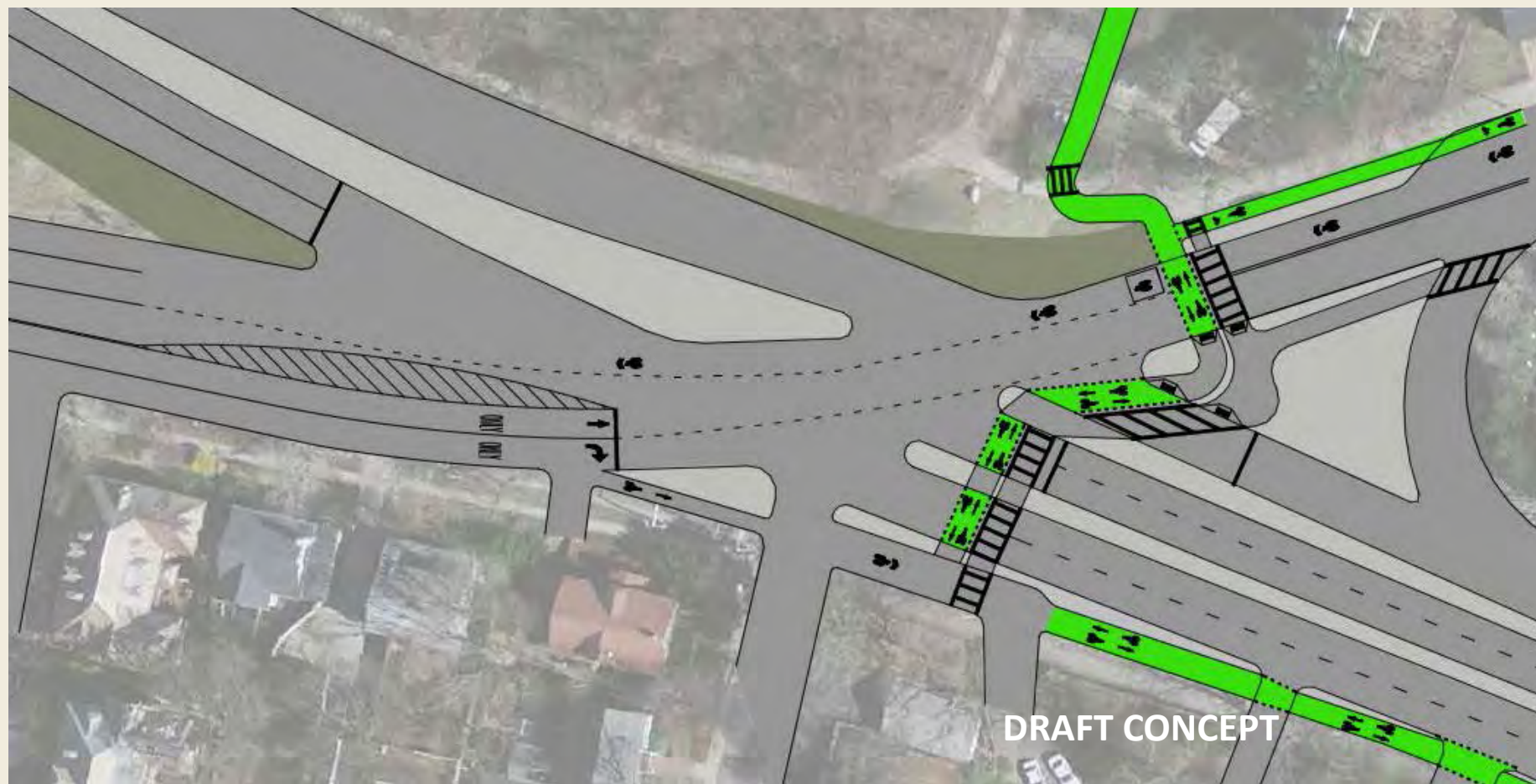




# Mt. Auburn Street at Fresh Pond Parkway — Short-Term



# Mt. Auburn Street at Fresh Pond Parkway — Short-Term



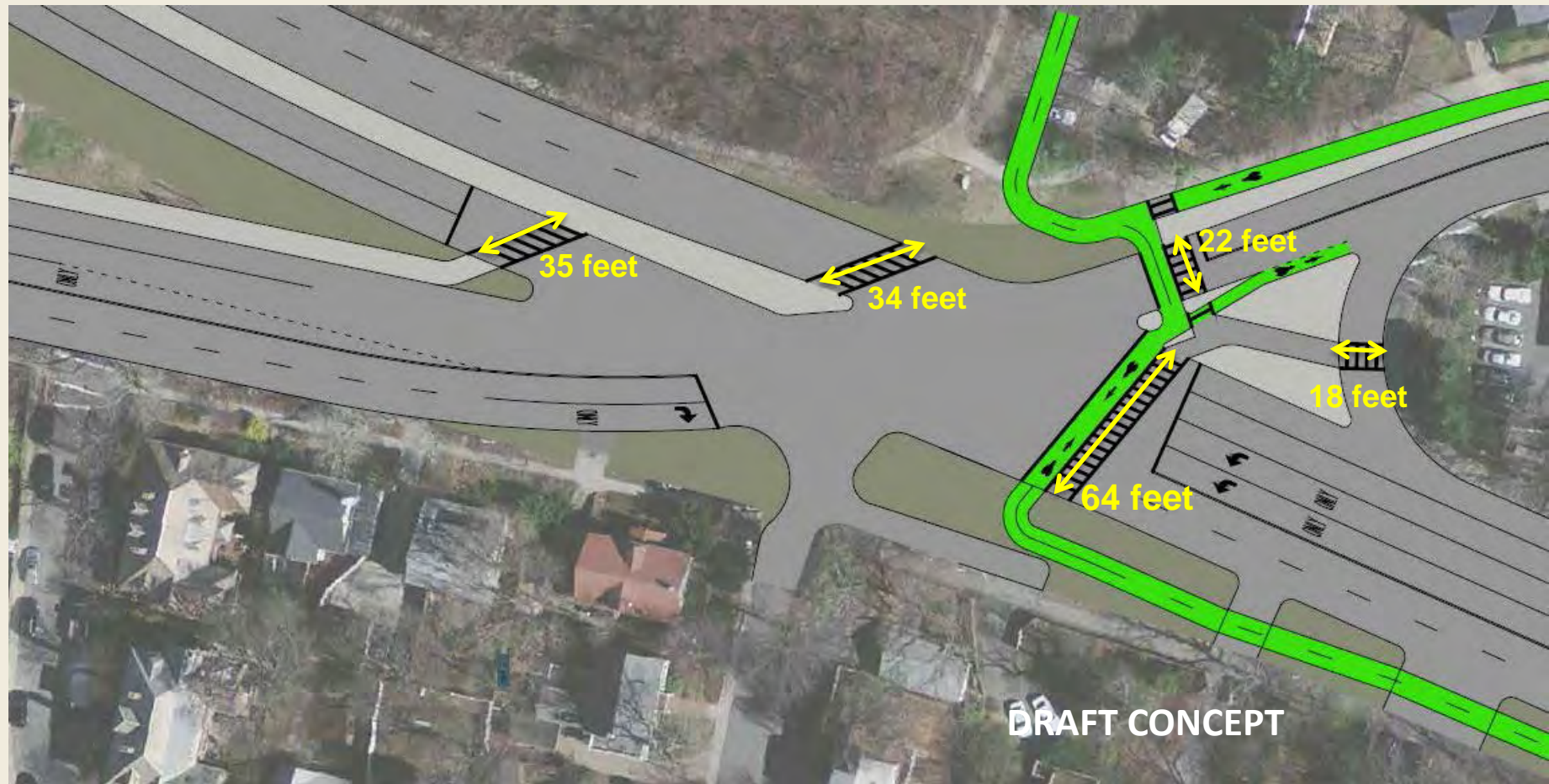


# Crossing Distances – Existing

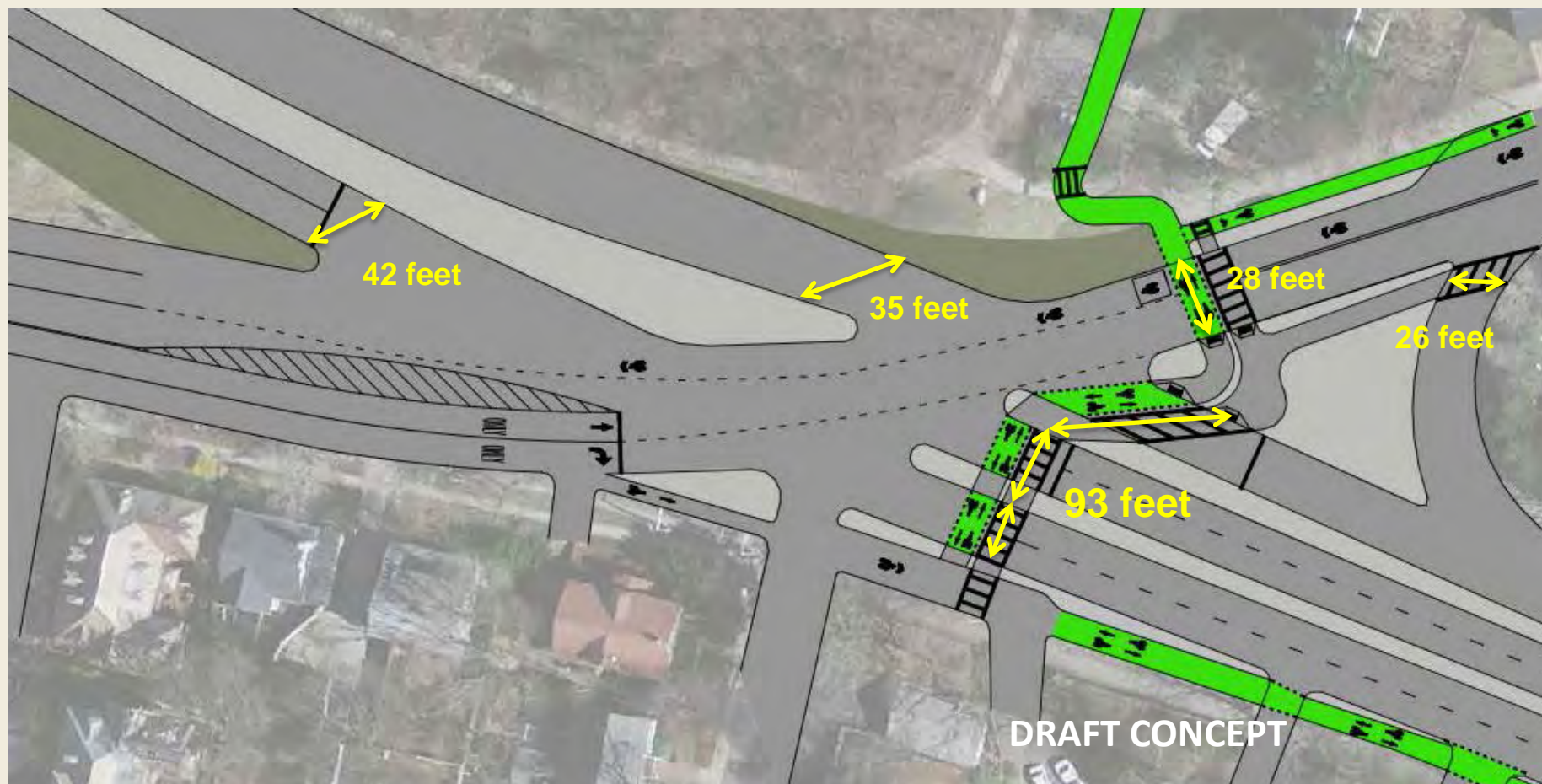




# Crossing Distances — Long-Term Option

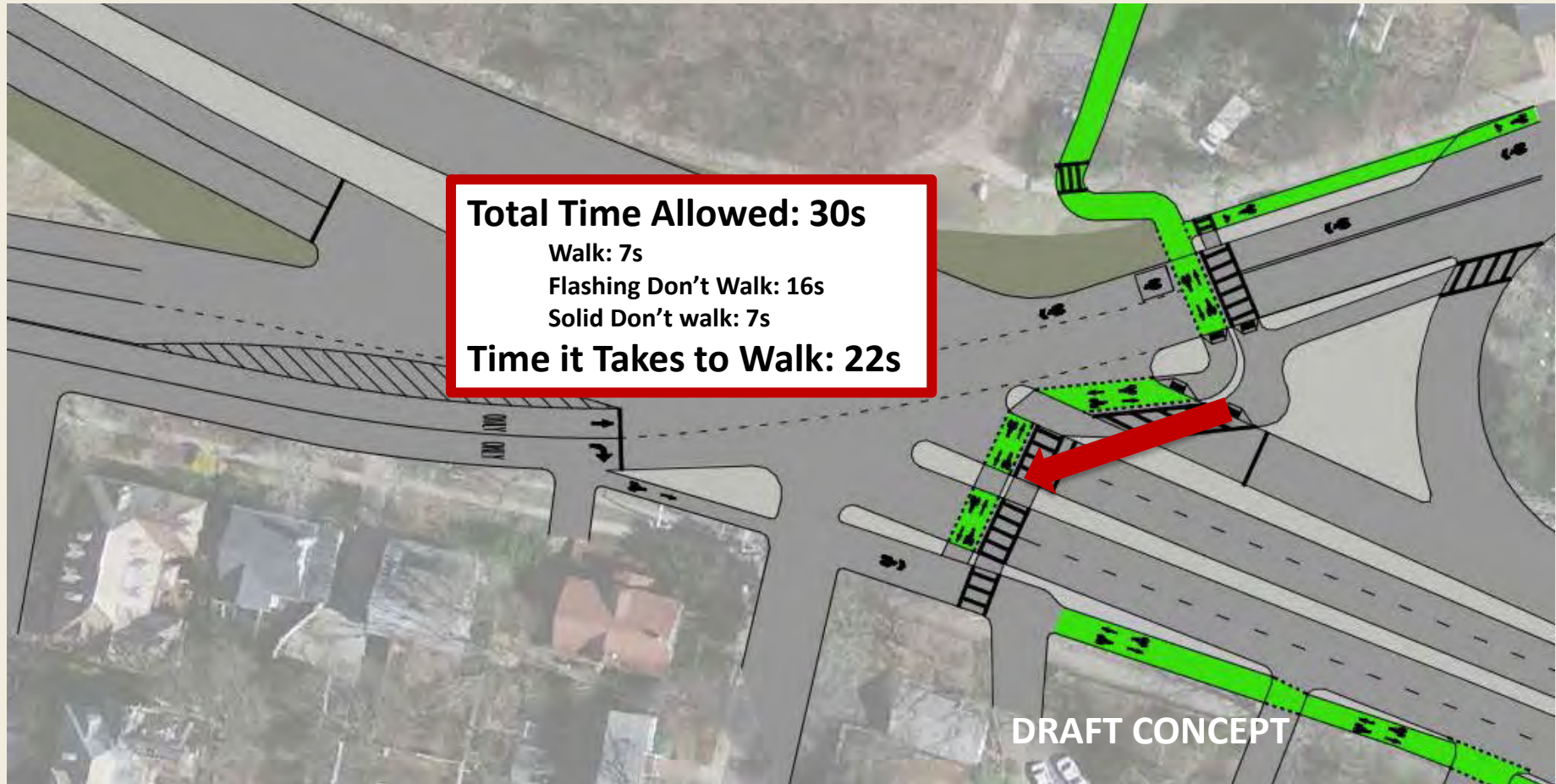


# Crossing Distances — Short-Term Option



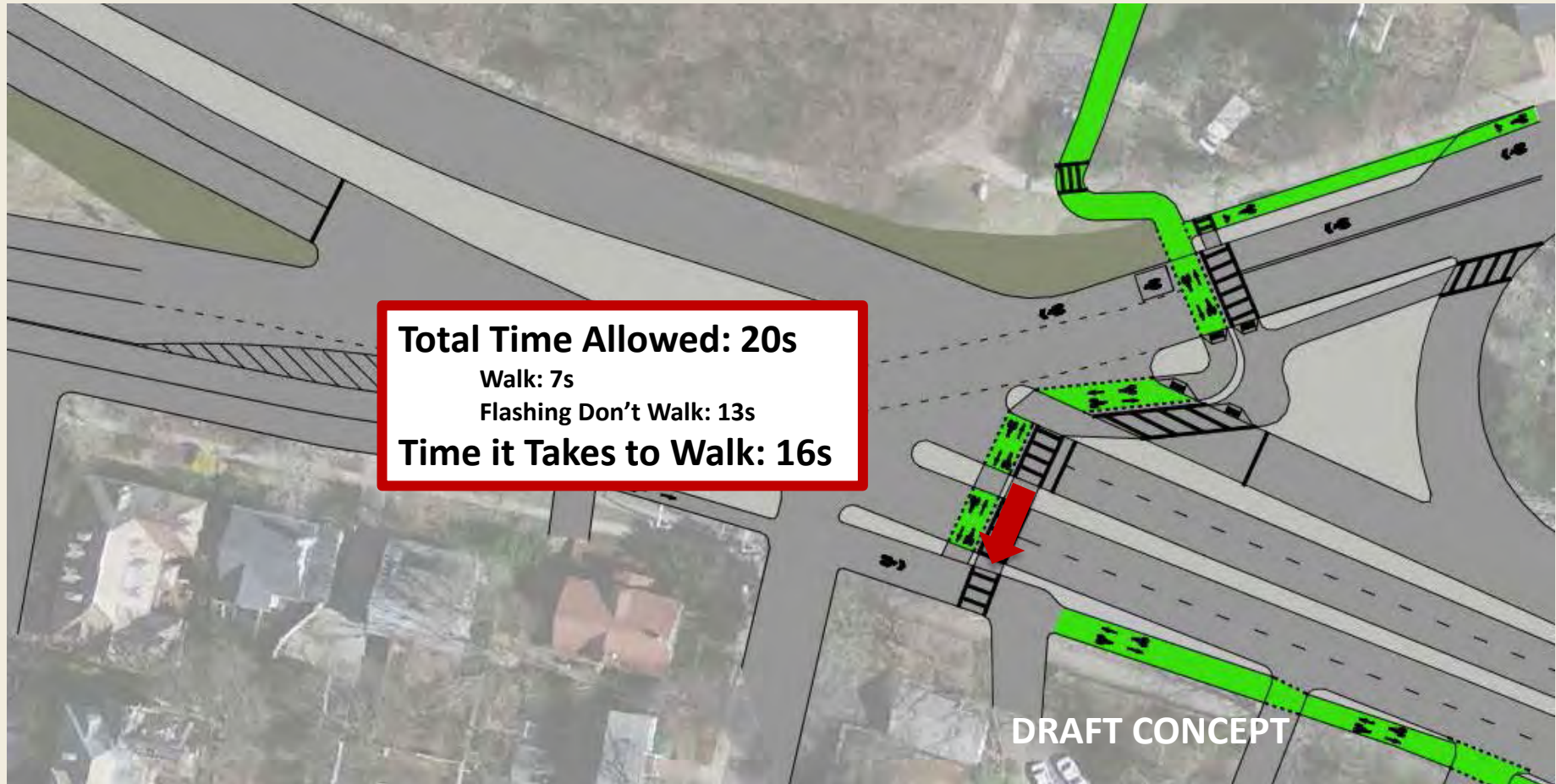


# Short-Term Option Westbound Crossing – Phase I

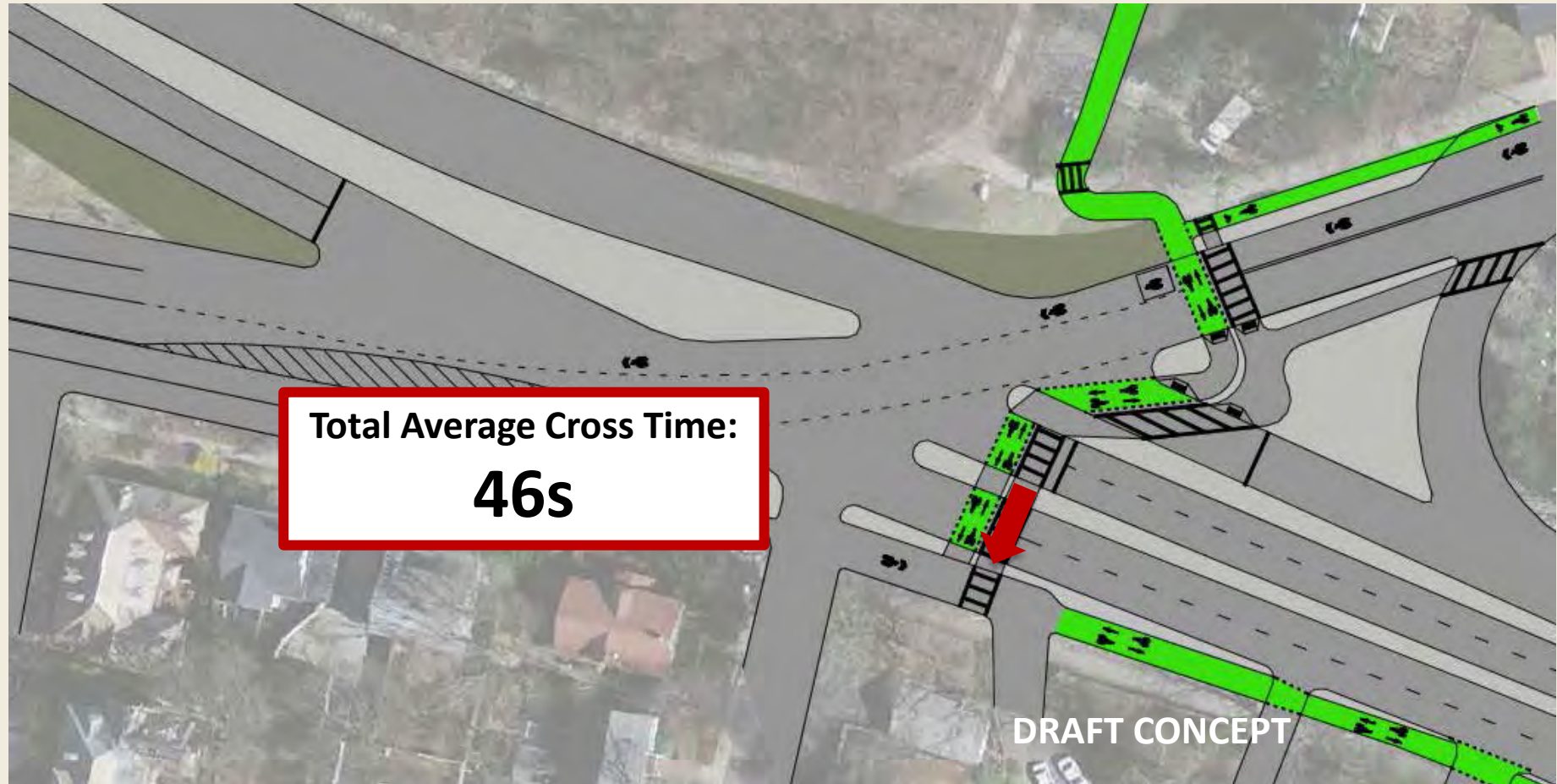




# Short-Term Option Westbound Crossing – Phase II

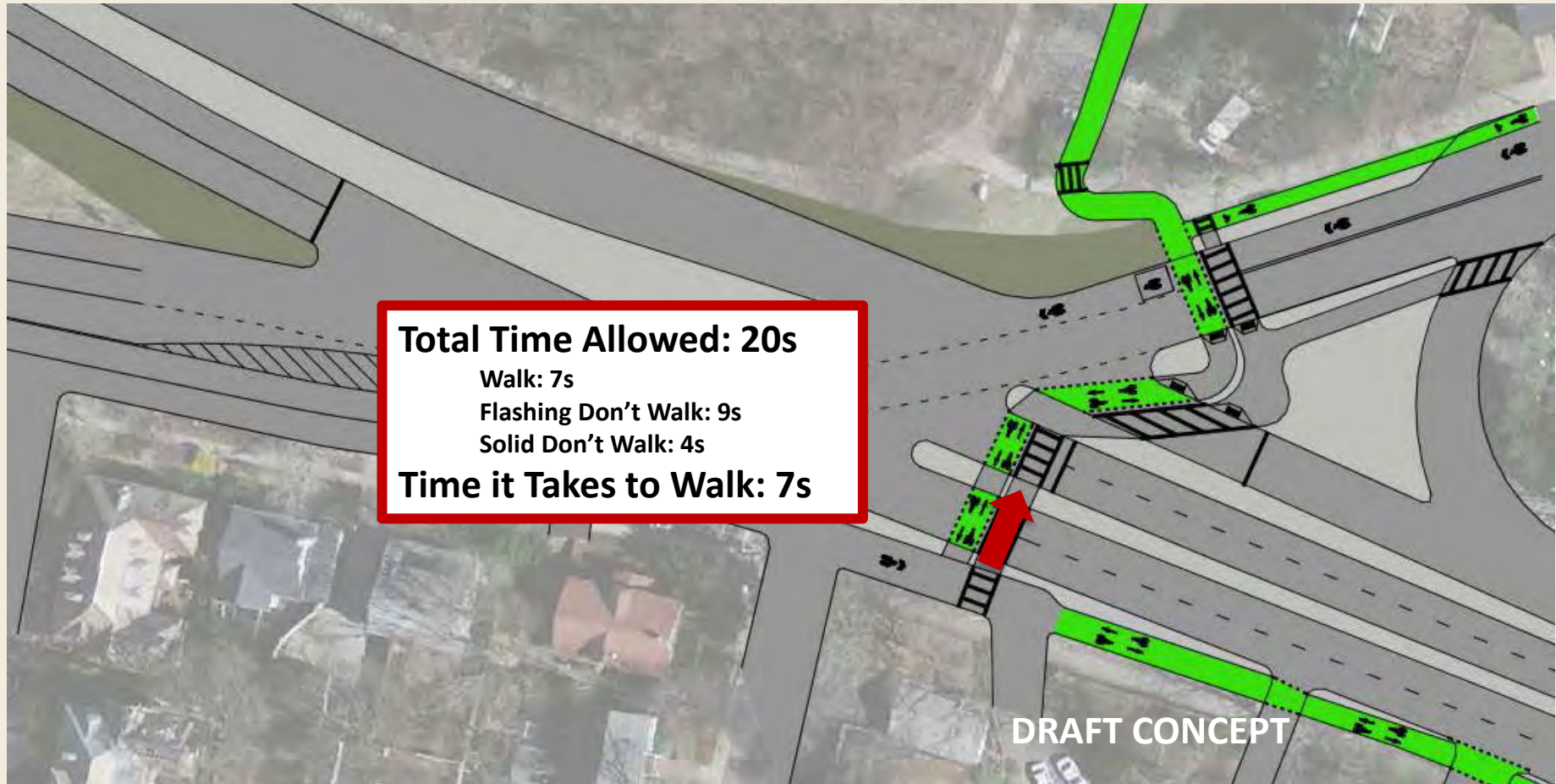


# Short-Term Option Westbound Crossing – Total





# Short-Term Option Eastbound Crossing – Phase I

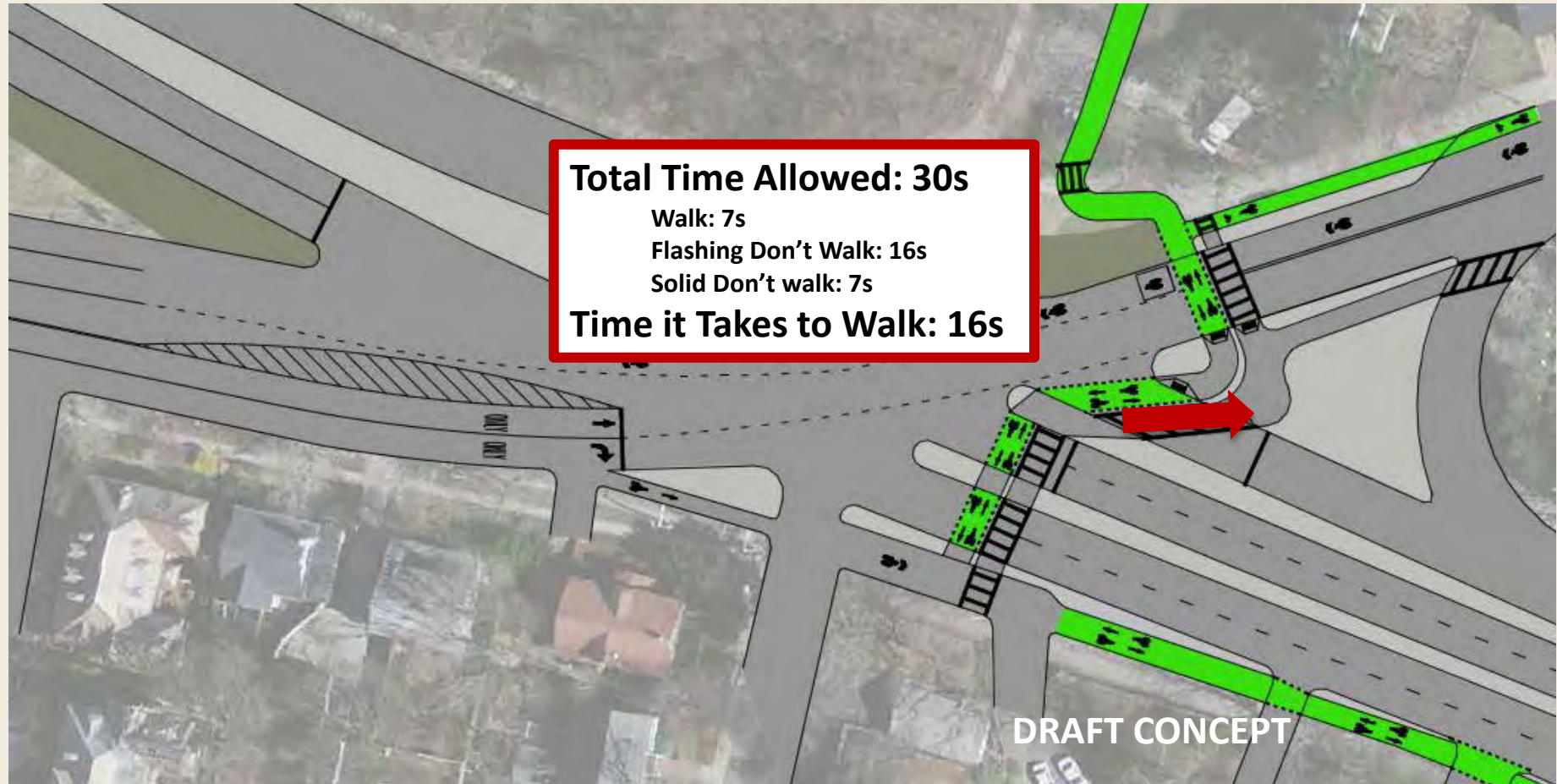




# Short-Term Option Eastbound Crossing – Phase II

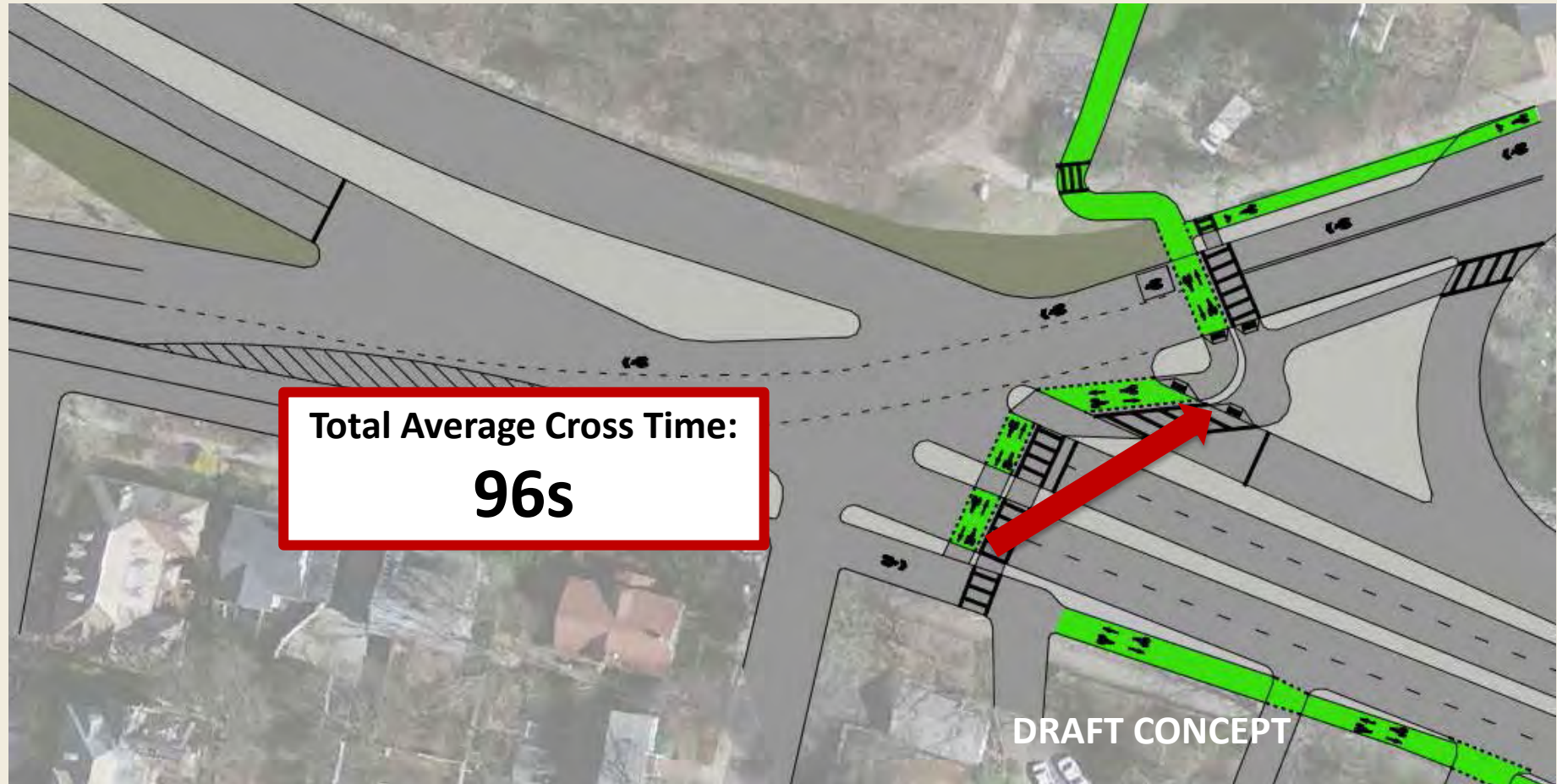


# Short-Term Option Eastbound Crossing – Phase III

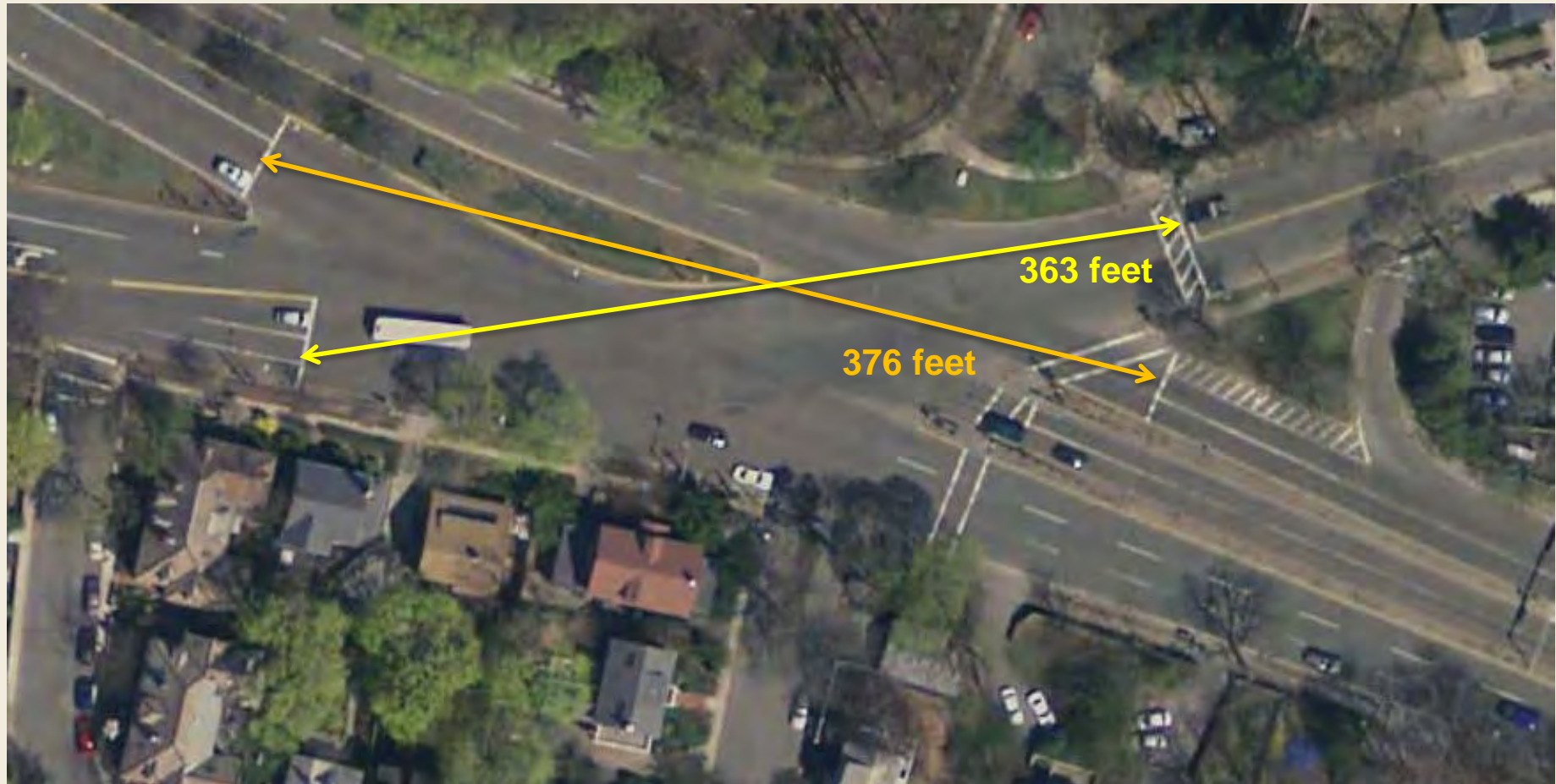




# Short-Term Option Eastbound Crossing – Time

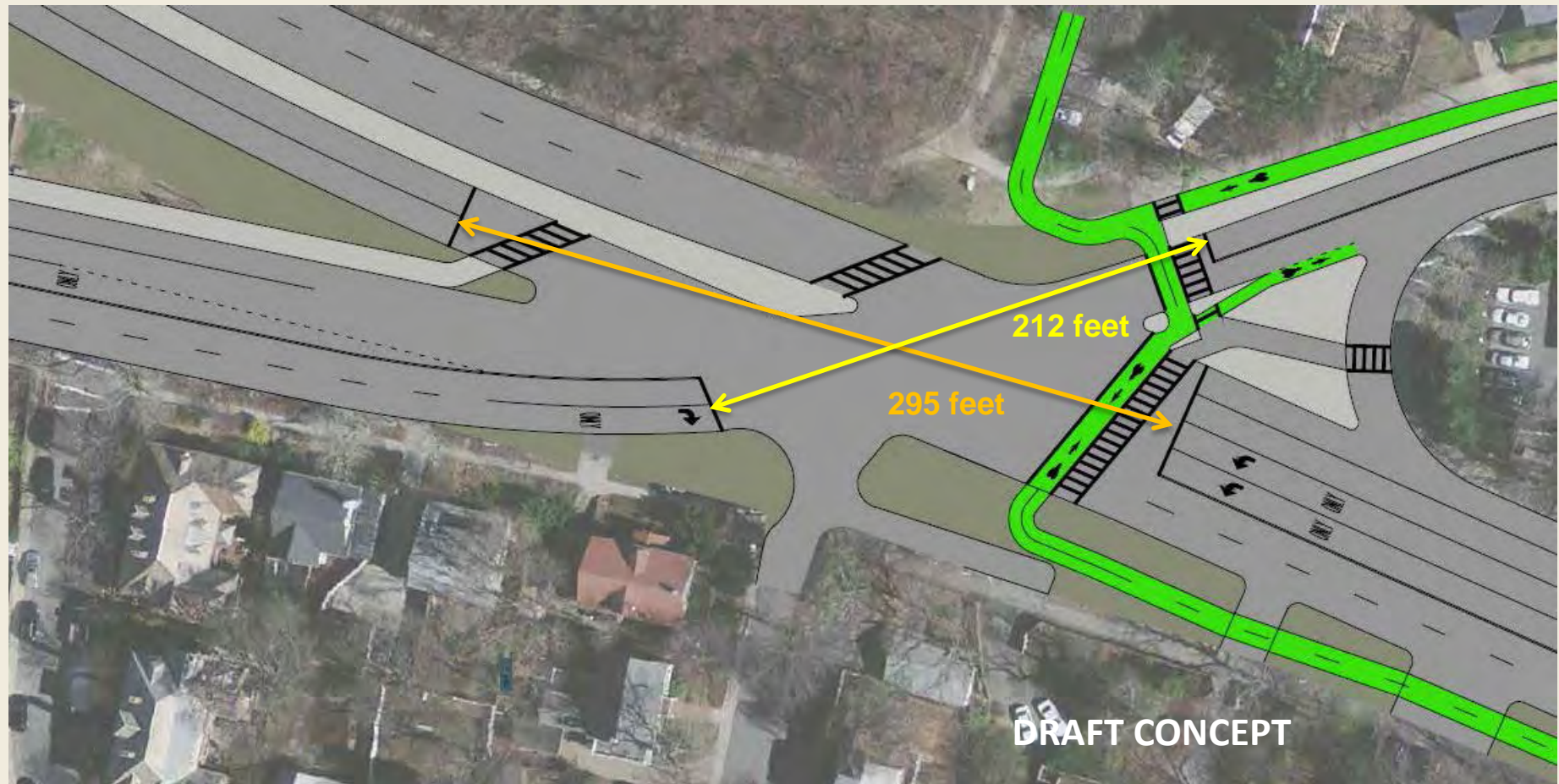


# Stop Bar Distances – Existing

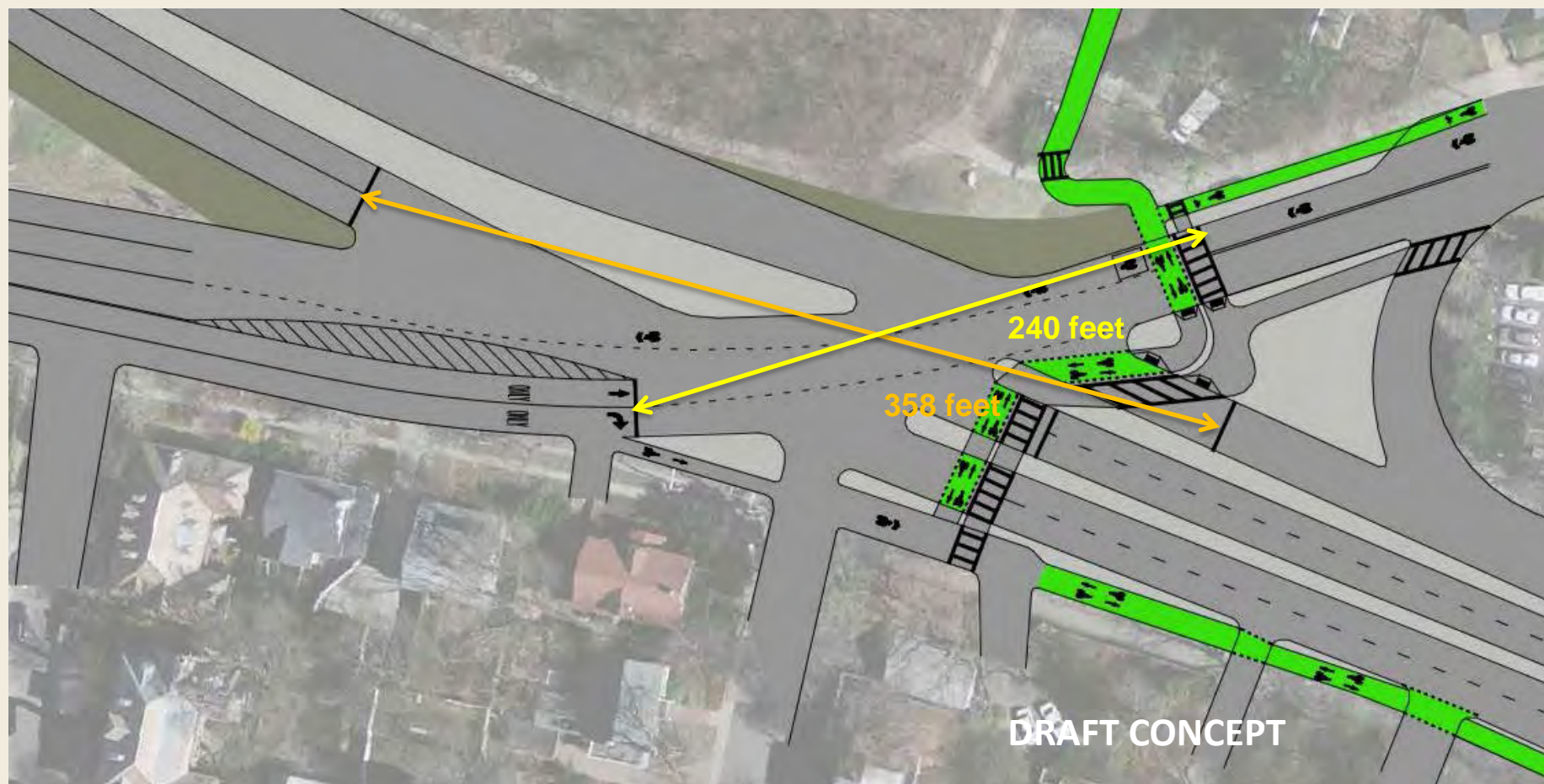




# Stop Bar Distances – Long Term Option



# Stop Bar Distances – Short Term

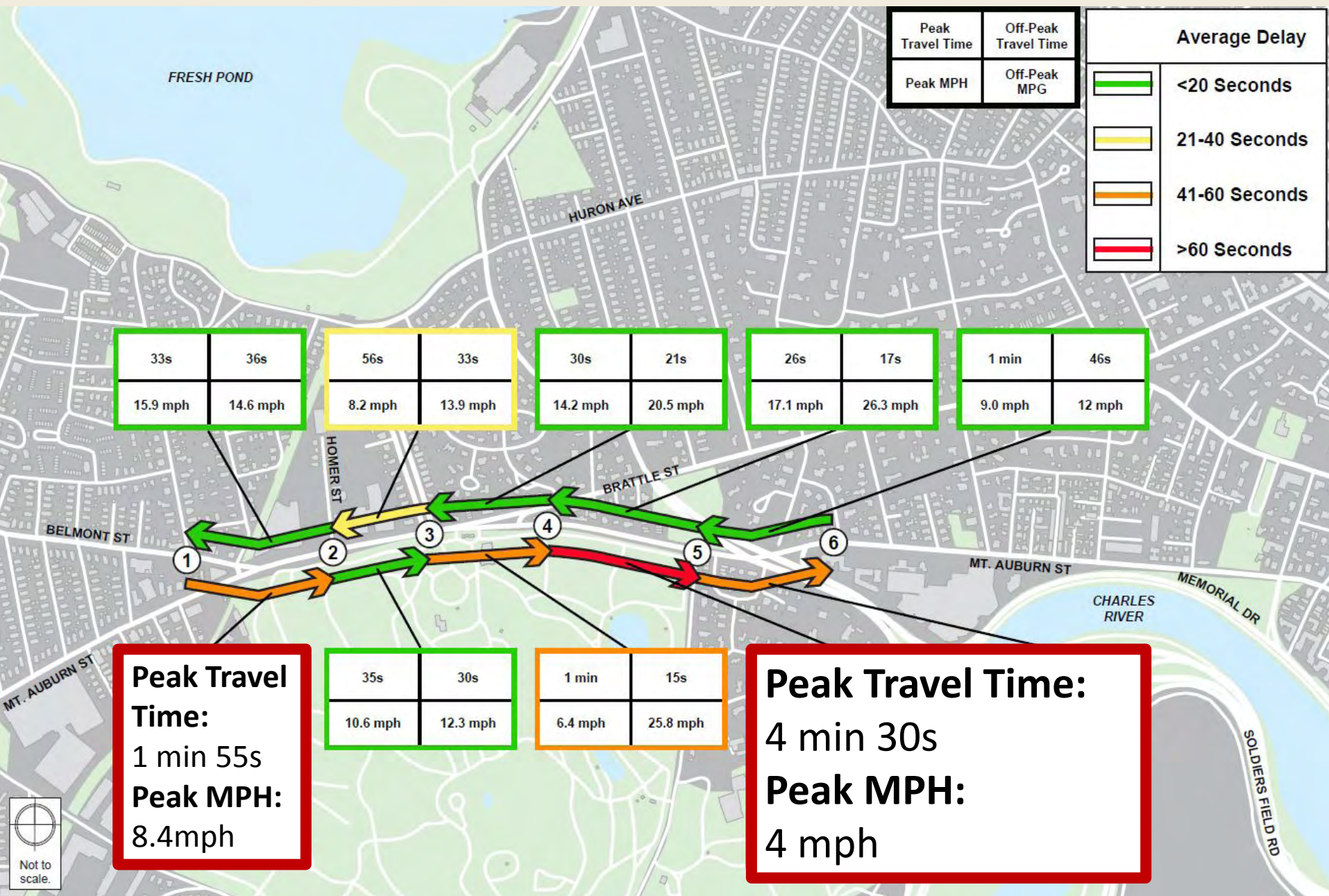






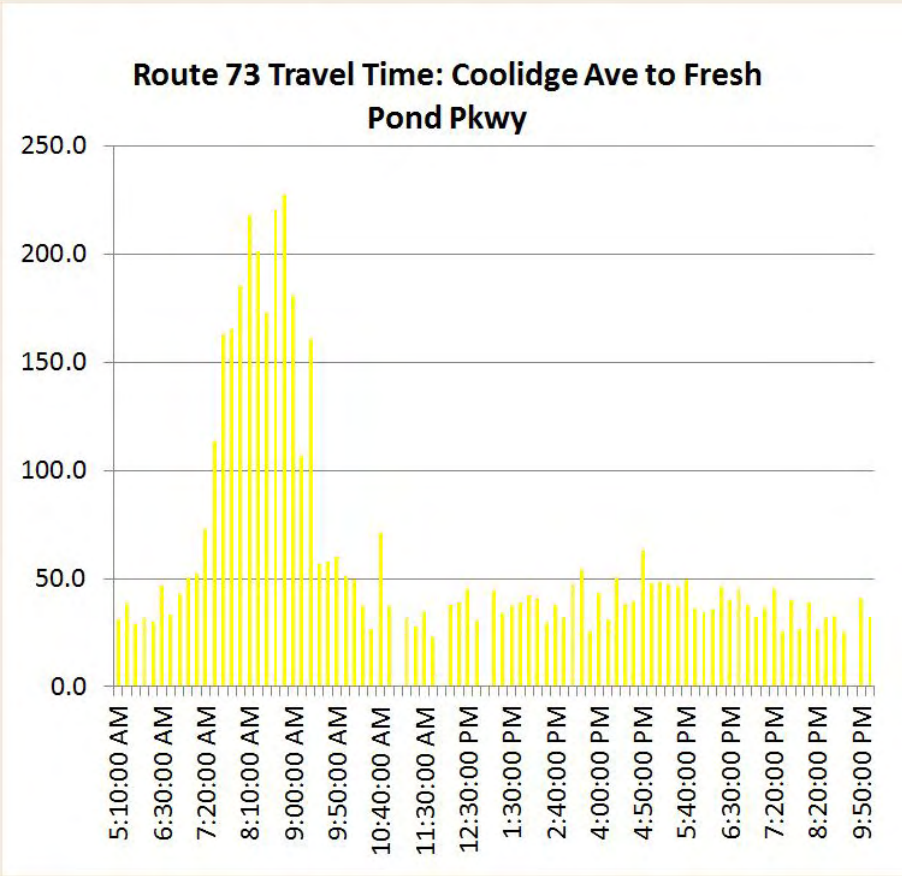
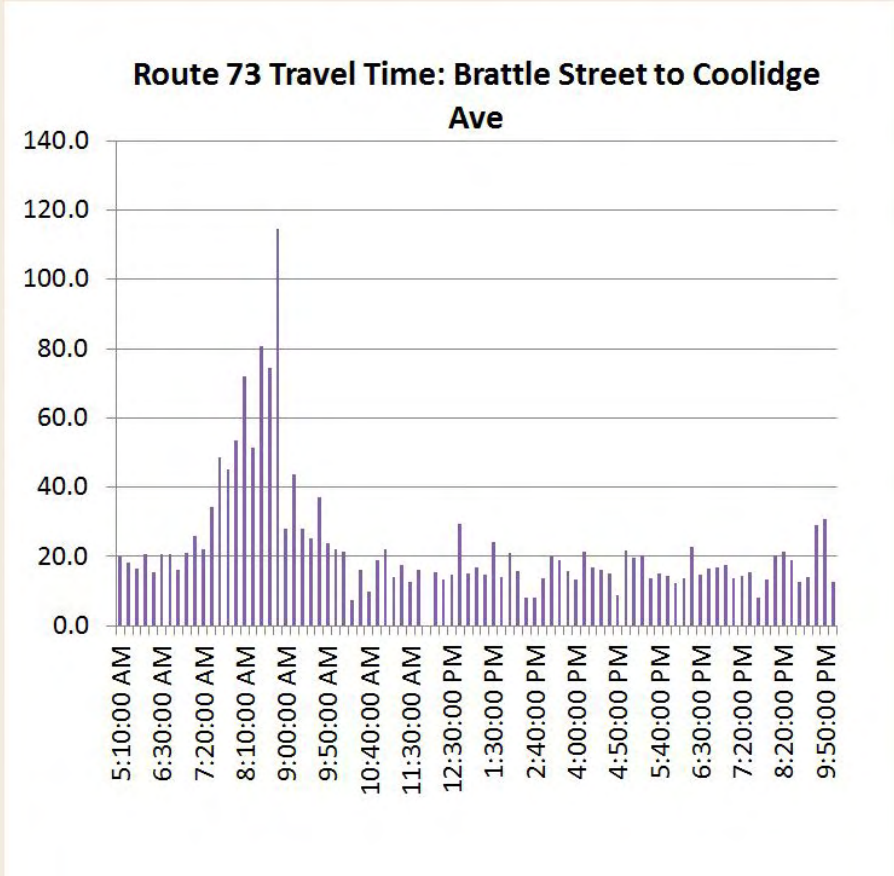
# First Look at Transit Priority Benefits

# Existing AM peak Bus Delay

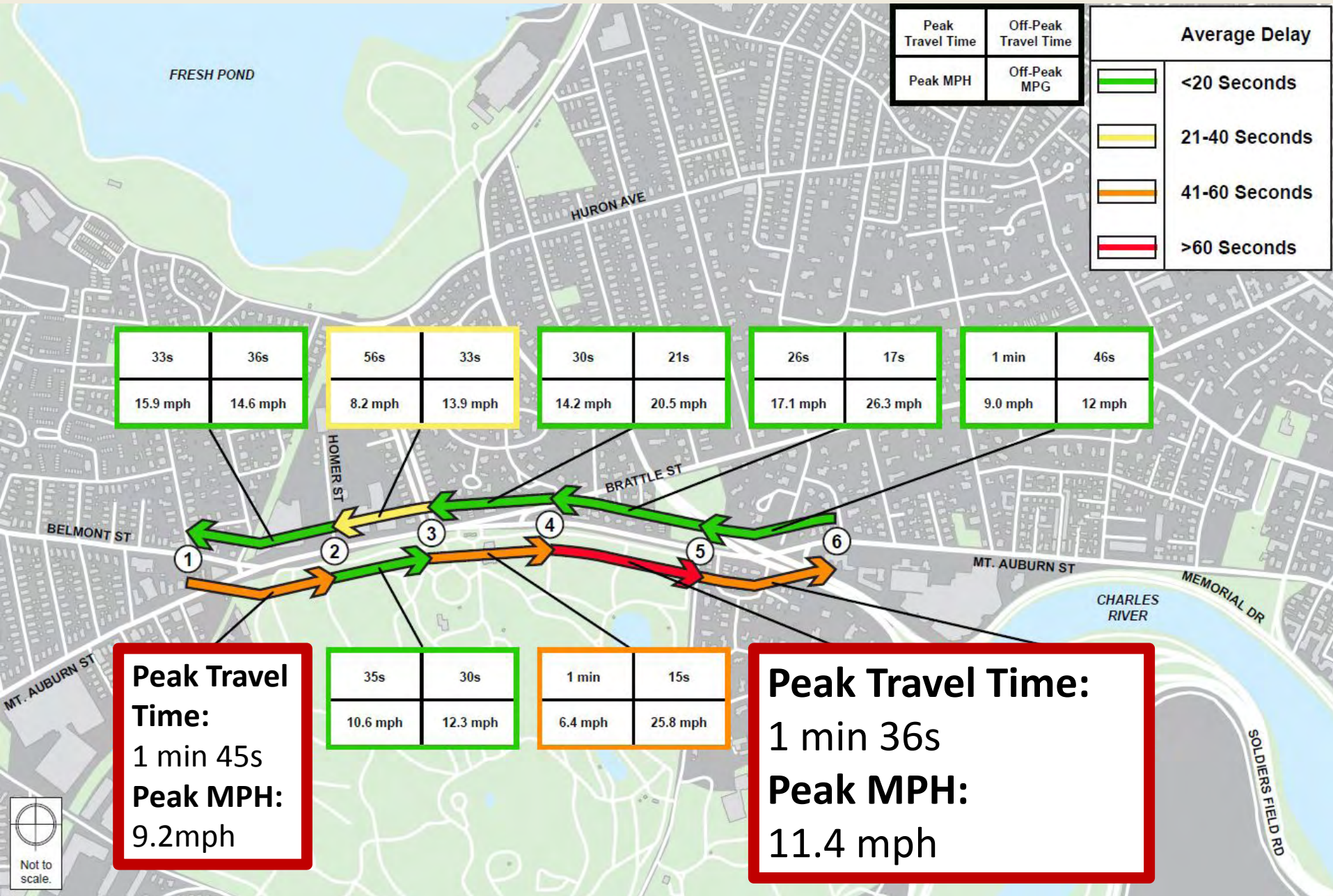




# Existing AM peak Bus Delay

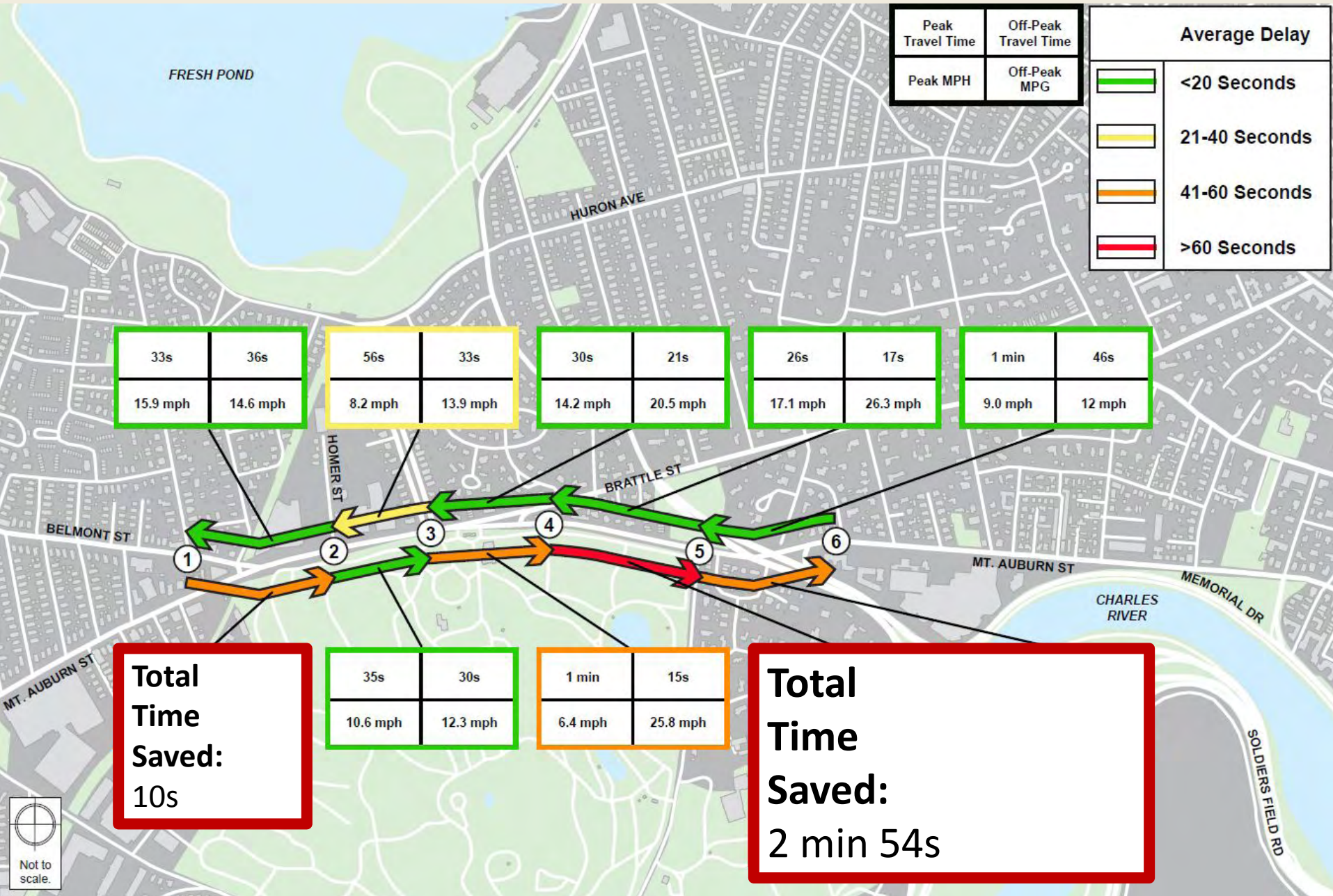


# Long-Term & Short-Term Options AM peak Bus Delay





# Long-Term & Short-Term Option AM peak Time Saved





# Plaza Design Charrette



# Break Out Groups: Design Charrette



# Break Out Groups: Design Charrette





# Break Out Groups: Design Charrette





# Break Out Groups: Design Charrette





# Break Out Groups: Design Charrette



# Break Out Groups: Design Charrette





# Break Out Groups: Design Charrette





# Break Out Groups: Design Charrette





# Break Out Groups: Design Charrette



# Break Out Groups: Design Charrette

- Possible Goals at Belmont:
  - Gateway to Strawberry Hill Neighborhood
  - Social Activity
  - Bring more customers to local businesses
  - Create a new open space
  - Accommodate Bus stop
- Possible Goals at Brattle:
  - Relate to Mt. Auburn Cemetery
  - Accommodate Bus stop





# Next Steps

- Next Stakeholder Meeting: **1<sup>st</sup> Week of November**
- Second Public Meeting **2<sup>nd</sup> Week of November**
  - Long and short-term options, their benefits and traffic analysis
  - Stand by for dates – coordination with Cambridge complete



## For More Information:

- **Project Website:** [www.mass.gov/dcr/mt-auburn-corridor-study](http://www.mass.gov/dcr/mt-auburn-corridor-study)
- **If you have comments or suggestions on this project:**
  - *Submit online at:* <http://www.mass.gov/eea/agencies/dcr/public-outreach/submit-public-comments/>
  - *Write:* Department of Conservation and Recreation, Office of Public Outreach, 251 Causeway Street, Suite 600, Boston, MA 02114
  - *Deadline (pertaining to this meeting): Thursday, 9/29/16*
    - *Note: Public comments submitted to DCR may be posted on the DCR website in their entirety.*
- **If you have questions, please email:**  
[MaryCatherine.McLean@massmail.state.ma.us](mailto:MaryCatherine.McLean@massmail.state.ma.us)