



Number: E-04-007

Date: 12/16/2004

ENGINEERING DIRECTIVE

A handwritten signature in black ink, appearing to be "Andrew", written over a horizontal line.

CHIEF ENGINEER

Detectable Warning Panels – Revised

Effective immediately, the *1996 Metric Edition Construction and Traffic Standard Details* and the *1997 [English Edition] Construction Standards* are amended with the following revised drawings (attached):

M/E 107.2.1R Wheelchair Ramp on Narrow Sidewalk
M/E 107.6.5R Detectable Warning Panel for Wheelchair Ramps

These drawings supersede drawings dated April 2004, issued under Engineering Directive E-04-003. These drawings shall be used immediately on all design and construction projects.

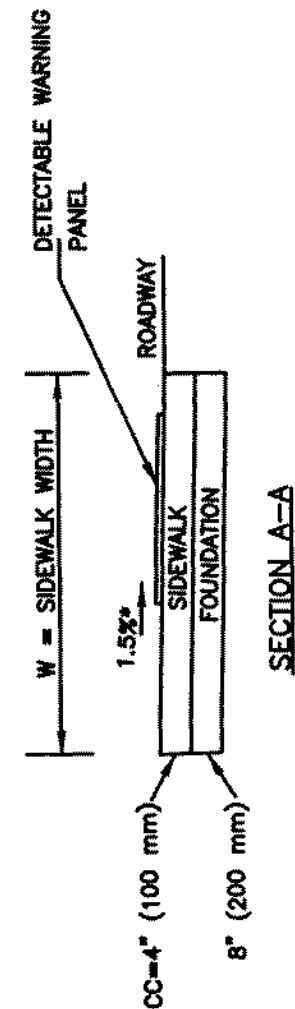
The depth of Detectable Warning Panels shall be 24 inches (610 mm) in the direction of travel. All other guidance provided in the text of Engineering Directive E-04-003 dated April 16, 2004 remains in effect.

Attachments

Distribution: _____

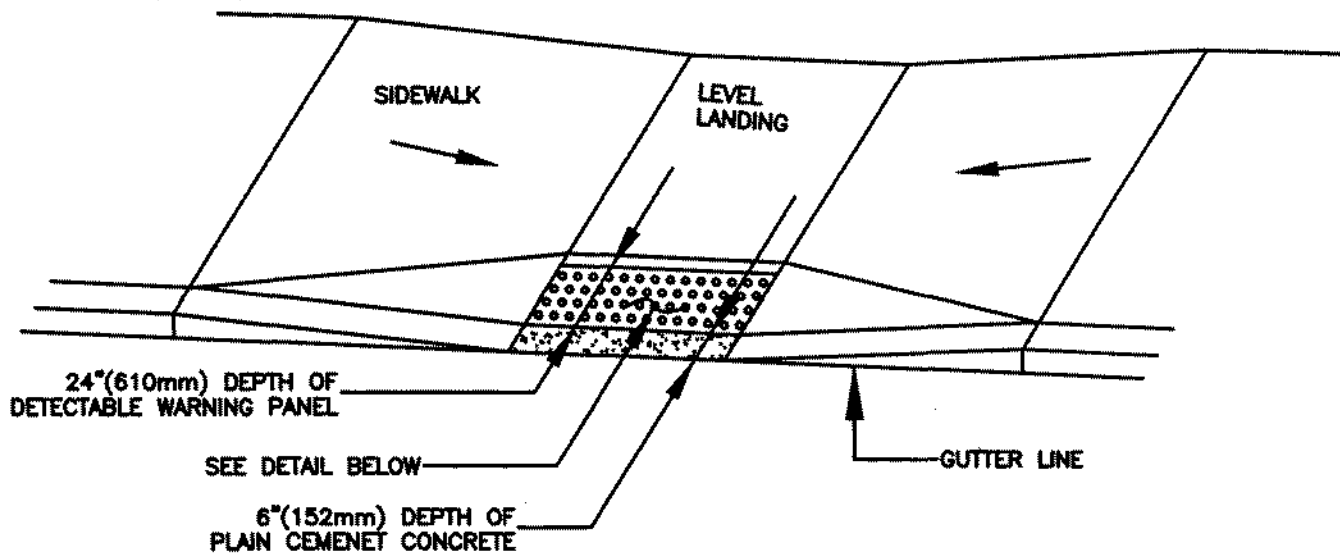
Please Post: _____

Do Not Post: X

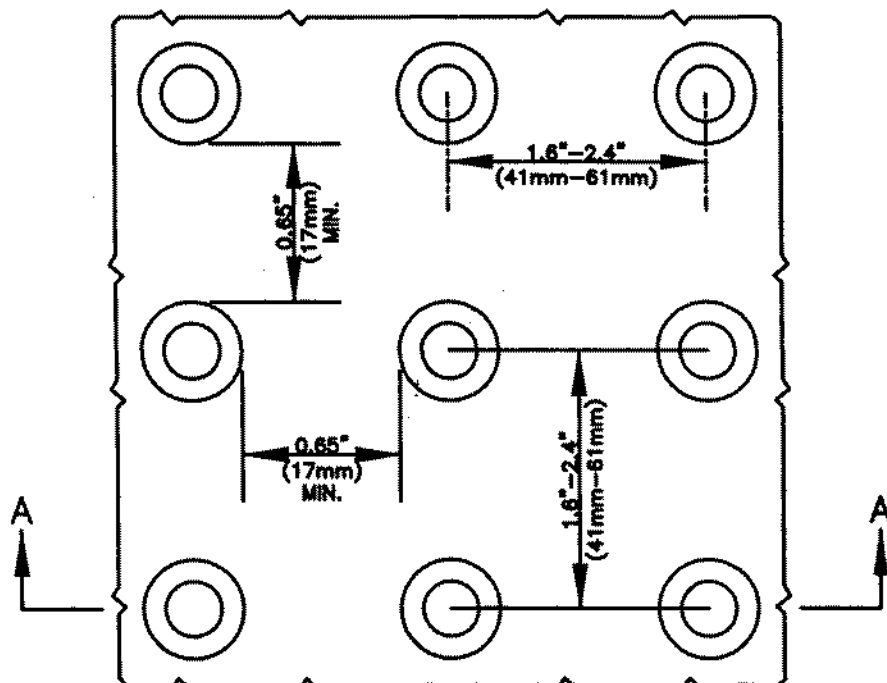


SECTION A-A

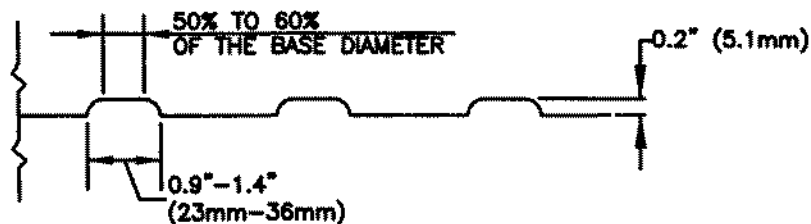
WARNING PANEL



TYPICAL INSTALLATION



DETAIL OF DETECTABLE WARNING PANEL



SECTION A-A

NOTE:

PANELS MAY BE CONCRETE PRECAST OR CAST IN PLACE OR OTHER SUITABLE MATERIAL PERMANENTLY APPLIED TO THE RAMP. DETECTABLE WARNING SURFACES SHALL CONTRAST VISUALLY WITH ADJACENT WALKING SURFACES EITHER LIGHT-ON-DARK, OR DARK-ON-LIGHT