



Number: E-04-004

Date: April 16, 2004

ENGINEERING DIRECTIVE

A handwritten signature in cursive script, reading "Thomas F. Broderick".

CHIEF ENGINEER

REVISED CONSTRUCTION DRAWINGS

Effective immediately, the *1996 Metric Edition Construction and Traffic Standard Details* and the *1977 [English Edition] Construction Standards* are amended with the following revised drawings (attached):

M/E 106.1.0R	Hot Mix Asphalt Berm Type A
M/E 401.1.1R	W Beam Highway Guardrail Typical Installation
M/E 401.20.0R	Offset Blocks for Steel W Beam Guardrail on Steel Posts
M/E 401.21.0R	Offset Blocks for Steel Thrie Beam Guardrail on Steel Posts

These drawings apply to all projects under design and to all projects in construction if the relevant items of work are not yet complete.

Hot Mix Asphalt Berm Drawing

This drawing has been revised to provide a flatter slope. Drawing M/E 106.1.0 dated December 2001 shall be deleted.

Guardrail Drawings

Drawing M/E 401.1.1 has been revised to show a variable width installation, depending on the post material.

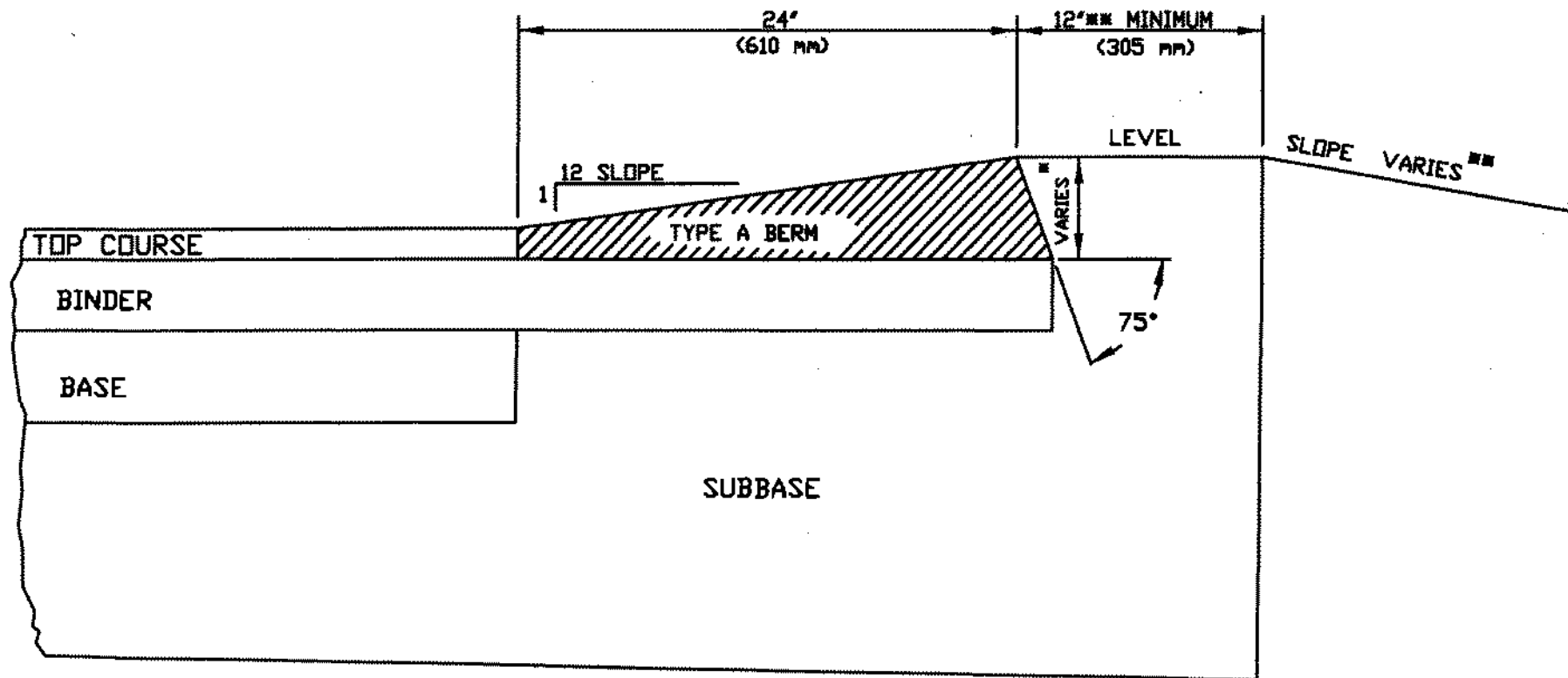
Drawing M/E 401.20.0 has been revised to allow for variable dimensions on plastic offset blocks, depending on the manufacturer.

Drawing M/E 401.21.0 has been revised to show a taller thrie beam offset block than previously required.

Drawings M/E 401.1.1, M/E 401.2.0 and M/E 401.21.0 dated December 2001 shall be deleted.

Attachments:

**HOT MIX ASPHALT BERM
TYPE A**



NOTE:

- THIS DIMENSION VARIES WITH THE THICKNESS OF THE TOP COURSE AND SLOPE OF BINDER
- SEE TYPICAL SECTIONS FOR PROJECT

DATE OF ISSUE

April 2004

DRAWING NUMBER

M/E106.1.0 R

PAVEMENT MILLING MULCH

* WHEN PLACED IN MEDIAN, CHANGE TO
THREE BEAM AND HEIGHT TO
2'-8½" ± 1" (827 mm ± 25 mm)
(NOTE C HEIGHT OF RAIL IS ALWAYS 550 mm)

SEE M/E 401.1.0

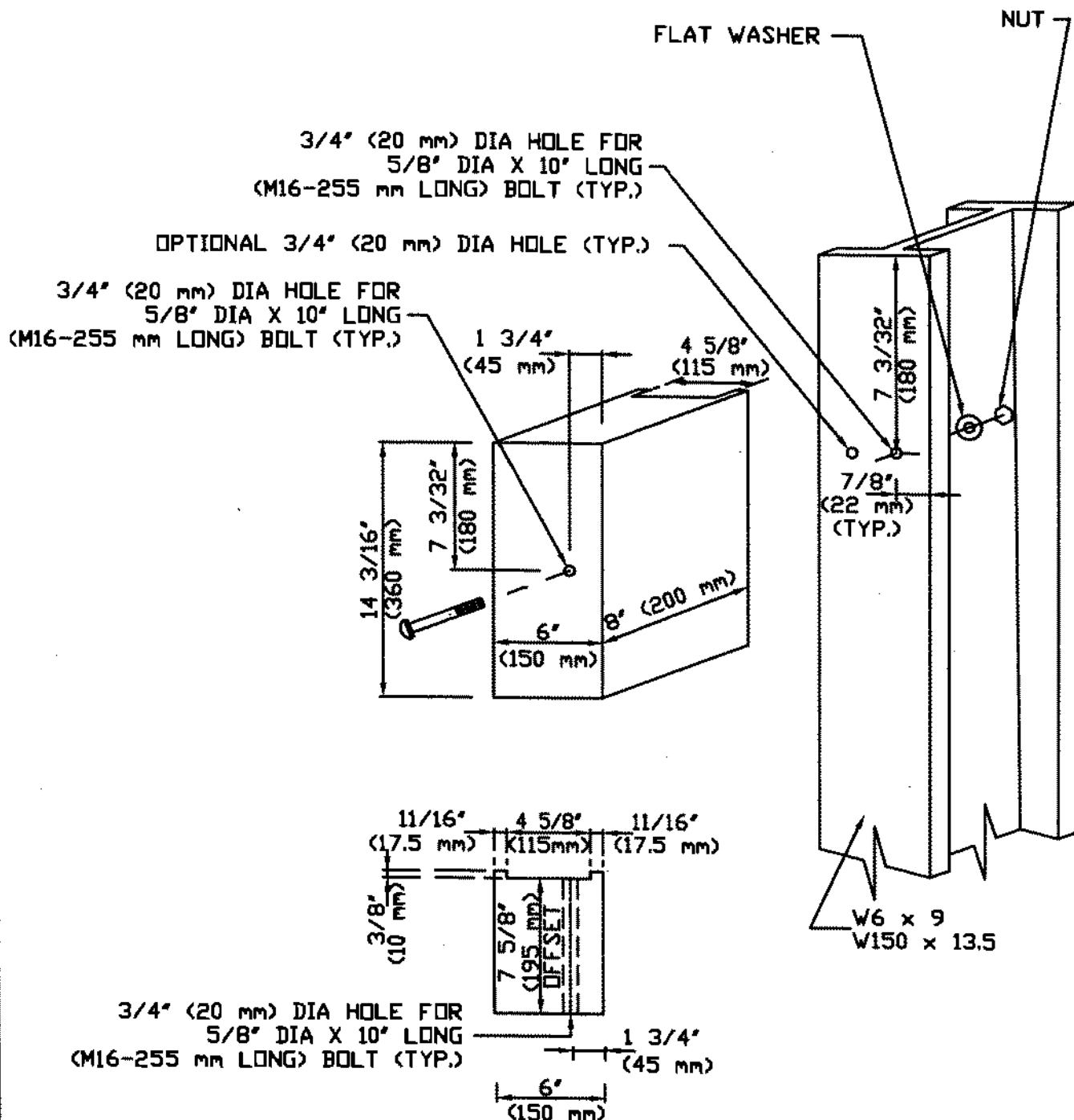
*** VARIES ACCORDING TO POST MATERIAL

SECTION Z-Z***

VERTICAL GRANITE CURB OR HOT MIX
ASPHALT CURB ALONG EDGE OF SHOULDER

SECTION Z-Z***

TYPE A BERM ALONG EDGE OF SHOULDER



NOTE:

BLOCKS MAY BE WOOD OR PLASTIC. THE DIMENSION OF PLASTIC BLOCKS MAY VARY FROM THE DIMENSIONS SHOWN ABOVE, EXCEPT THAT THE OFFSET DIMENSION MUST BE WITHIN 1/8" (3 mm) OF THE DIMENSION SHOWN. THE OFFSET BLOCKS MUST BE APPROVED BY FHWA FOR THE INTENDED USE.

