

ENGINEERING DIRECTIVE


CHIEF ENGINEER

**REVISIONS TO THE CONSTRUCTION STANDARD DRAWINGS ON
PRECAST MEDIAN BARRIER FOR TEMPORARY TRAFFIC CONTROL**

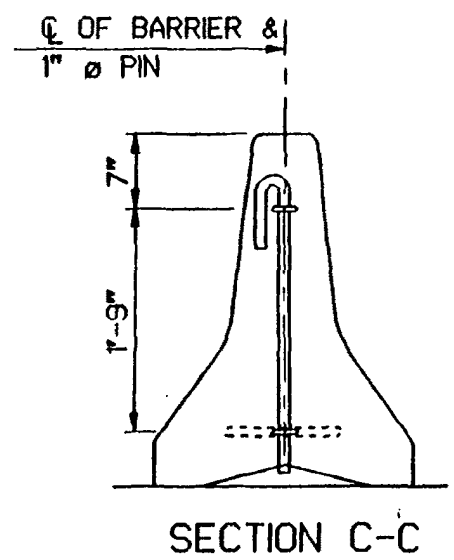
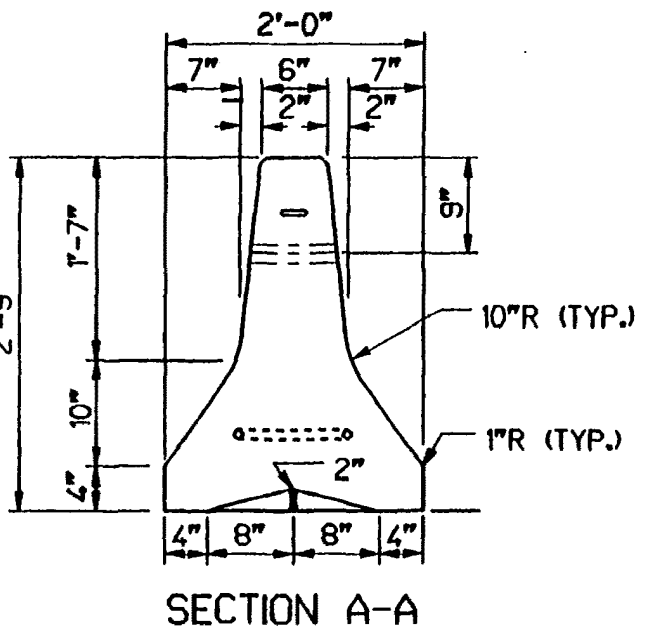
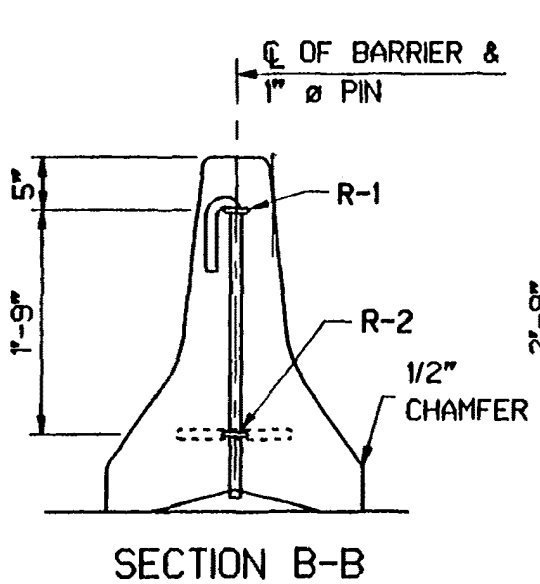
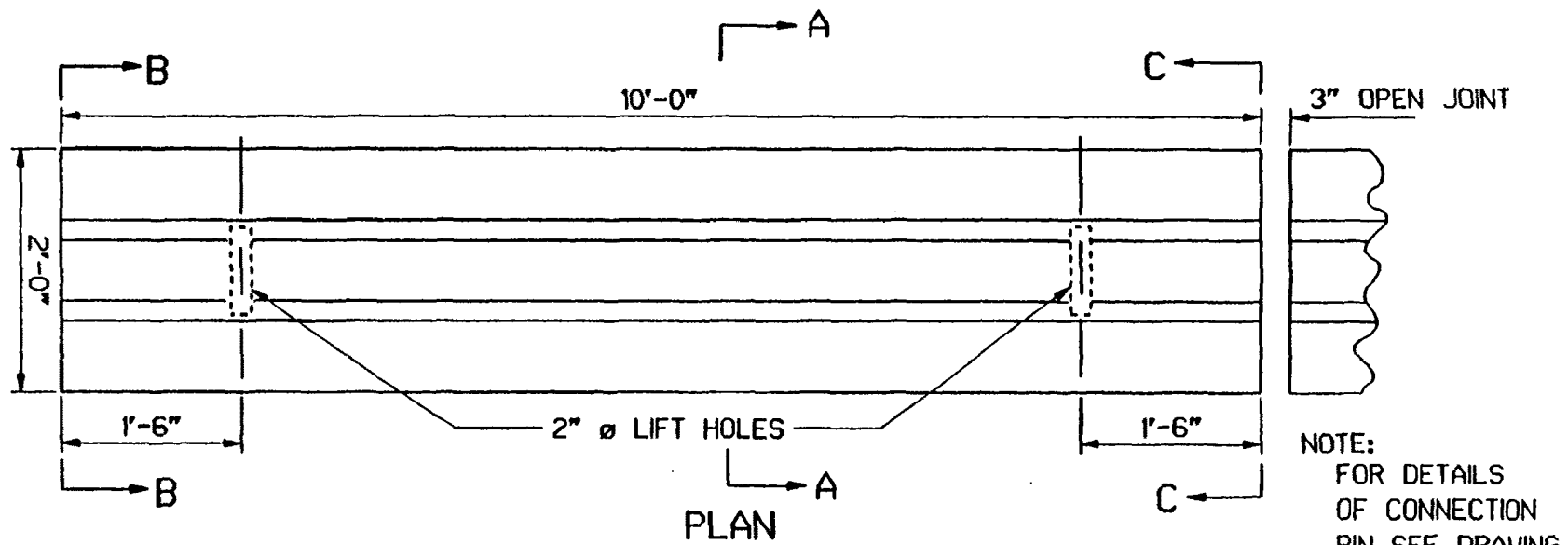
The purpose of this Engineering Directive is to formally notify **ALL** Department Engineering Personnel of a change to the Construction Standard Drawings 401.15.1 and 401.15.2.

Effective immediately, in all projects, the connecting pin is to be completely contained within the cross section of the barrier. Notes on Drawing 401.15.1 require the pin to be heat bent to ensure a smooth bend and prevent shattering of the pin.

This applies to new projects as well as on going projects. Resident Engineers are to order the contractor to make any necessary changes.

Distribution: B1 Please post: _____ Do not post X

REPLACES DRAWING 401.15.1
ORIGINAL ISSUE DATE AUG. 1979



NOTE:
THE ENTIRE PIN JOINING ADJACENT BARRIERS MUST BE COMPLETELY
WITHIN THE CROSS-SECTION OF THE TEMPORARY CONCRETE BARRIER.

REPLACES DRAWING 401.15.2

ORIGINAL ISSUE DATE AUG. 1979

DATE OF ISSUE

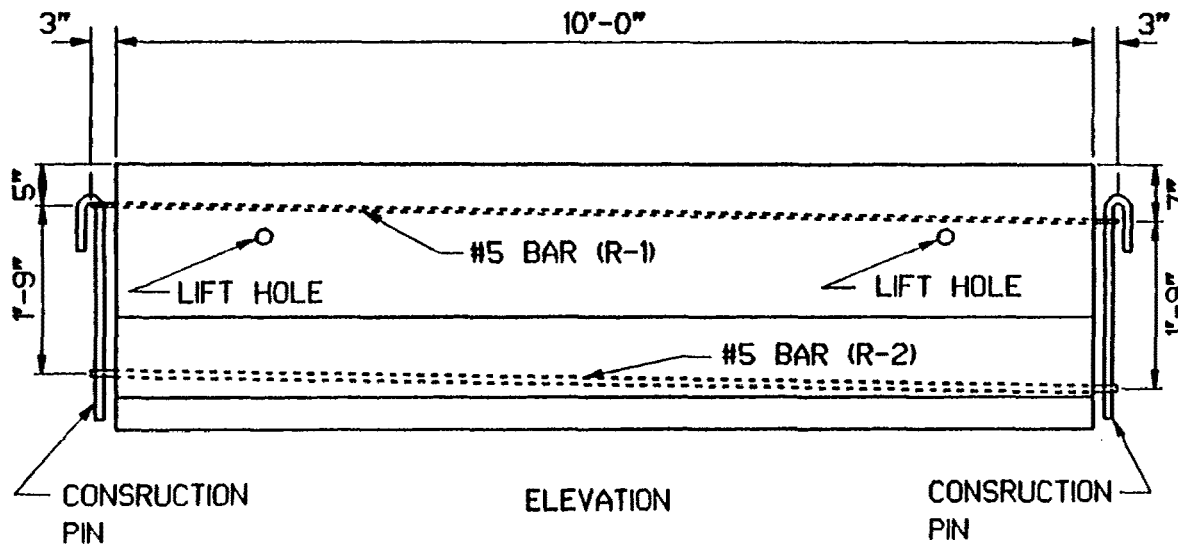
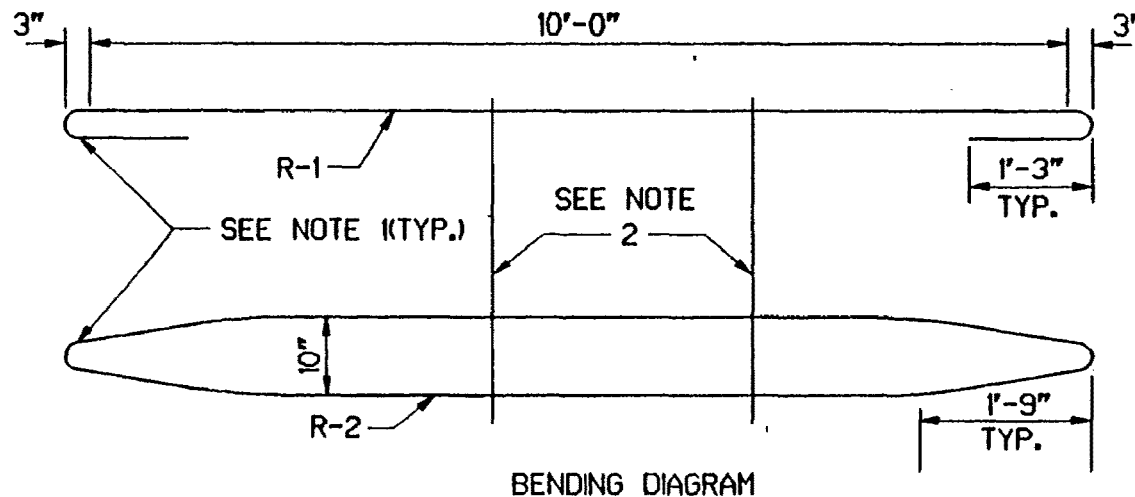
NOVEMBER 1994

DRAWING NUMBER

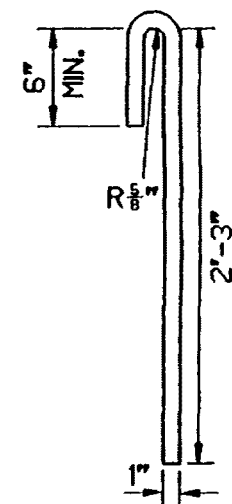
401.15.2

NOTES:

1. BEND REBARS AROUND A 1 3/8" \varnothing ROD.
2. BARS R-1 AND R-2 SHALL BE FABRICATED CONTINUOUSLY, OR AT THE OPTION OF THE CONTRACTOR. THE BARS MAY BE FABRICATED WITH 15" MINIMUM LAPS AT THE LOCATIONS SHOWN.
3. PIN CONNECTION SHALL BE COMPLETELY WITHIN THE CROSS-SECTION OF THE BARRIER.
4. THE 1" \varnothing PIN SHALL BE HEAT BENT TO A 5/8" RADIUS (1 1/4" DIAMETER).



ALSO SEE DRAWING 401.15.2



CONNECTION PIN DETAIL