

**ENGINEERING DIRECTIVE**

*Thomas F. Brodwick*  
CHIEF ENGINEER

# OBSOLETE

STANDARD MYLAR SIZES FOR MASSHIGHWAY PROJECTS

Effective immediately, the standard sheet size for all MassHighway project mylars is an industry standard 24" x 36" (609.6 mm x 914.4 mm). The drawing area, as defined by the border and trim lines, will still be defined in metric dimensions. The following Highway Design Manual and Bridge Manual drawings (attached) have been revised to reflect these changes:

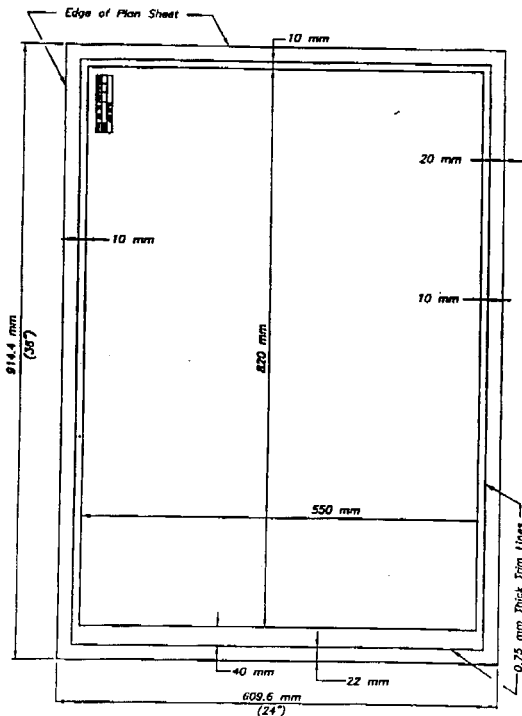
- Highway Design Manual Figure 2-12  
*Sizes of Standard Tracings*
- Bridge Manual Drawing Number 1.1.1  
*Standard First Sheet, Construction Plans*
- Bridge Manual Drawing Number 1.1.2  
*Standard Subsequent Sheets, Construction Plans*
- Bridge Manual Drawing Number 1.2.1  
*Standard First Sheet, Sketch Plans*

Designers should make every effort to prepare all new drawings in accordance with the new standards. However, active design projects which have been substantially completed in accordance with the previous mylar size standards may continue to be prepared in this fashion at the discretion of the MassHighway Project Manager.

Mylar sheet sizes for each project must be uniform. Projects with non-uniform or non-standard (current or previous) mylar sheet sizes will not be accepted by MassHighway and will be returned to the designer.

This Directive does not apply to Layout Plans.

Attachments: Revised Drawings



**Notes:**

1. The above drawing is not drawn to scale.
2. All plans must be prepared on 24" x 36" mylar sheets.
3. All plans shall be high contrast black line drawings on translucent mylar. (except if all color which may inhibit reproduction.)
4. The Drawing Office is asked to work with pictorial regardless of media orientation.