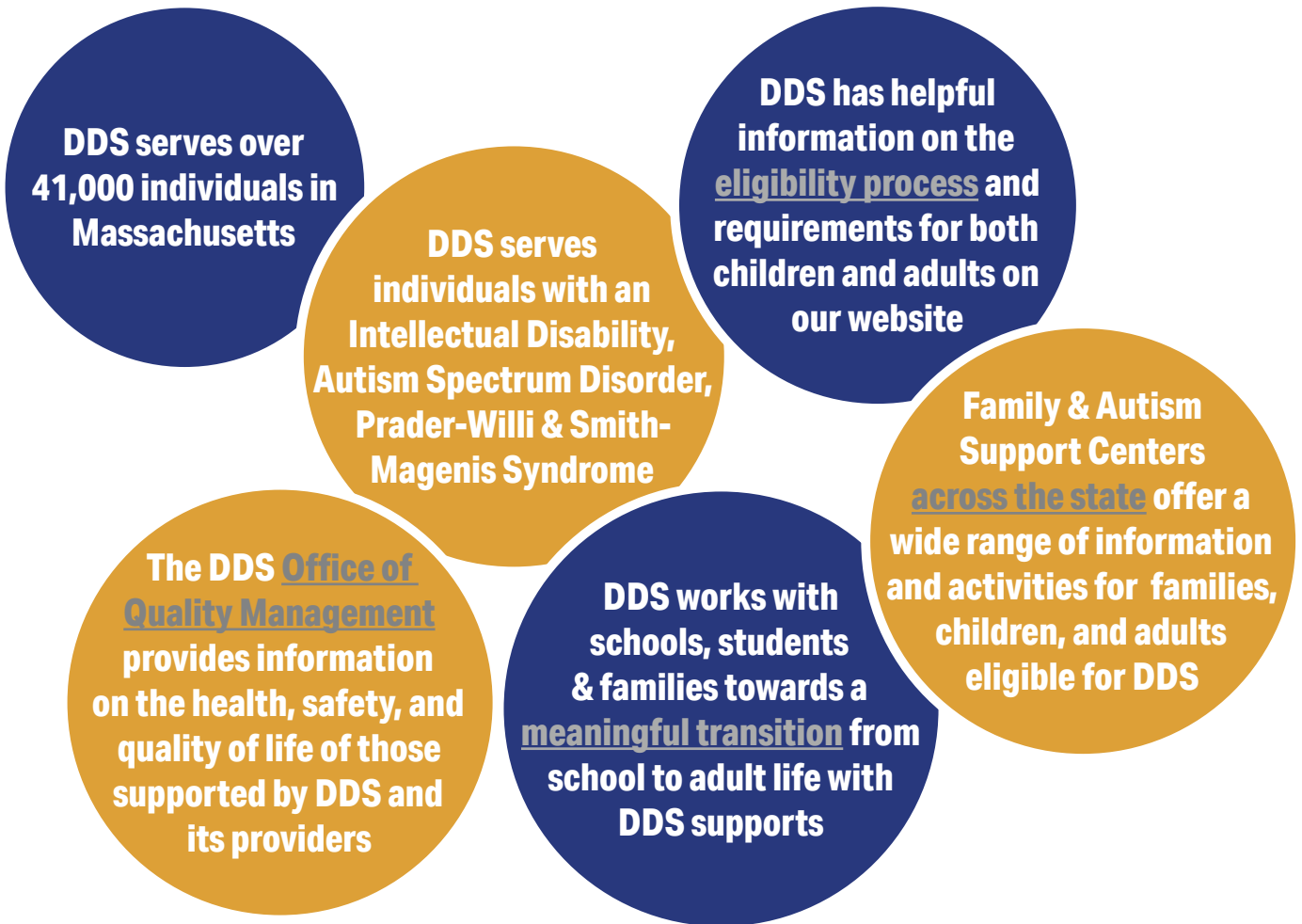




The Department of Developmental Services provides supports to children and adults with intellectual and developmental disabilities including Autism Spectrum Disorder. Supports are designed to promote meaningful participation and inclusion in all aspects of community life.

The Department serves over 32,000 adults and an additional 9,000 children across the state to assist in transitions from school to adult life and to provide support for individuals through an individualized, person-centered approach.

Services are coordinated through 23 Area Offices and four Regional Offices across the state. Services are provided through contracts with non-profit agencies and through two self-directed service options. The Department monitors services through a variety of quality management systems.



Services for children include family support and a variety of programs to address specialized support needs that supplement educational services.

Services for adults include an array of employment and day program supports to enable individuals to pursue a career or be engaged in other meaningful activities in the community; family supports and a variety of flexible services such as respite, in-home skills training, and companion services for those individuals who live at home with their families; and community living supports for more independent living situations and other residential supports, such as shared living and group homes.

DDS Central Office | 500 Harrison Ave. | Boston, MA 02118 | [617-727-5608](tel:617-727-5608)



www.mass.gov/dds



@DDSmass



@DDSmass



@DDSmass