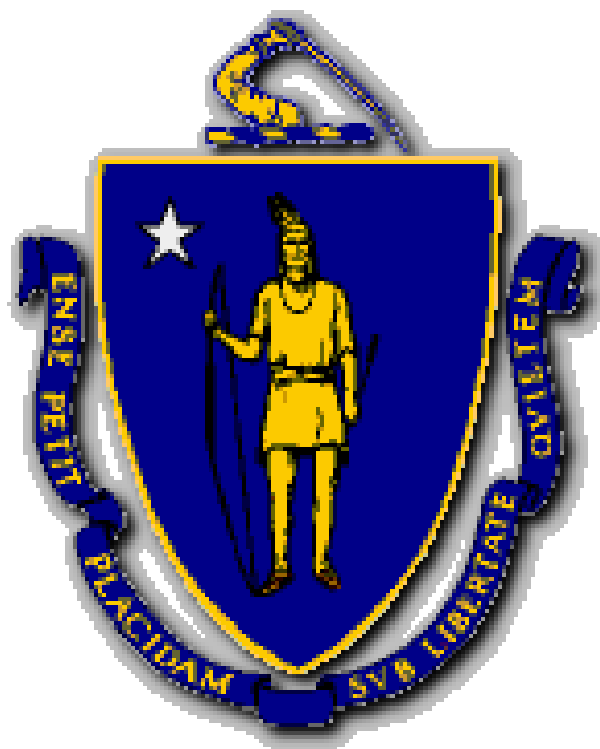


# January 1, 2008 Inmate Statistics

Massachusetts Department of Correction



**Deval L. Patrick**  
*Governor*

**Timothy P. Murray**  
*Lt. Governor*

**Kevin M. Burke**  
*Secretary of Public Safety*

**Harold W. Clarke**  
*Commissioner*

May 2008



*Author:*

**Research and Planning Division**

*Prepared by:*

**Pamela J. McLaughlin, Research Analyst**

**Rhiana Kohl, Ph.D, Executive Director  
Strategic Planning and Research**

**Massachusetts Department of Correction  
Research and Planning Division**

MCI-Concord/SFU Building  
PO Box 9125  
Concord, MA 01742  
(978) 405-6600 (phone)  
(978) 405-6680 (fax)  
Research@doc.state.ma.us

## **Acknowledgments**

The publication of this report would not be possible without the assistance of many divisions and individuals within the Department of Correction. The Research and Planning Division would like to thank the Department of Correction's Central and Institutional Records and Programming staff for providing Research and Planning with access to the necessary paper and automated files used to produce this report.

If you have any questions regarding this report, please contact the Research and Planning Division.

**This and other Massachusetts Department of Correction publications  
can be accessed on the internet under the Research & Statistics tab at:**

**<http://www.mass.gov/doc>**

## **Report Population**

### **January 1st, 1999 - 2008 reports.**

#### **DOC jurisdiction population:**

The population covered in this report is the Massachusetts Department of Correction (DOC) criminally sentenced population on January 1, 2008 incarcerated in DOC facilities *as well as* DOC inmates serving time in correctional facilities outside of the DOC (Massachusetts Houses of Correction, other states' correctional facilities and the Federal Bureau of Prisons).

### **Old Definition: January 1st, 1998 and prior reports.**

#### **DOC custody population:**

The former definition includes criminally sentenced inmates in DOC facilities *only*, and does not include criminally sentenced DOC inmates serving time outside of the DOC in Massachusetts Houses of Correction, other states' correctional facilities and the Federal Bureau of Prisons.

## **EXECUTIVE SUMMARY**

### Descriptive Overview of the January 1, 2008 JURISDICTION Population (Criminally Sentenced Only)

#### Number and Gender of Jurisdiction Population

- There were 10,132 criminally sentenced inmates in DOC population on January 1, 2008. This represented an increase of 4% from the January 1, 2007 population of 9,778 criminally sentenced inmates.
- The breakdown by gender was 9,525, males and 607 females representing 94% and 6% of the total population, respectively.

#### Race and Ethnicity

- The largest racial/ethnic group represented was White (42%), followed by Black (28%) and Hispanic (28%).

#### Age

- The mean age of the population on January 1, 2008 was 38 years, ranging from 17 to 91 years of age. The median age of the population was 37 years for both genders.
- The mean age at time of incarceration was 32.4 years. The median age at incarceration was 31 years for the population, 30 for males and 34 for females. Age at incarceration ranged from 15 years to 79 years.

#### Marital Status

- Sixty-six percent of the population reported a marital status of Single, 14% reported that they were Divorced and 14% reported being Married. Four percent reported being Separated and 2% Widowed.

#### Culture, Citizenship, Religion and Place of Birth

- Seventy-two percent of the population reported a culture of American. About three out of four males reported a culture of American (74%), followed by Puerto Rican (14%), whereas for females, 34% reported a culture of American followed by Irish (18%) and Puerto Rican (15%).
- The majority of the population reported their citizenship to be United States (91%); 91% for males and 95% for females.
- Of those who reported a religion, 82% of the 2008 population, reported a religion of “Christian”, of which, the most frequent response was Catholic with 41%. Eighteen percent of inmates reported a religion other than “Christian” (Islam, Agnostic, Buddhist, Jewish and variety of other non-Christian religions). Islam was the largest non-Christian religious group, with 6% of the population. Sixteen percent of inmates report having no religion.
- Fifty-eight percent of the population reported being born in Massachusetts, 12% in Puerto Rico and 10% reported being born outside of the US. These proportions varied by gender, with more females reporting that they were born in Massachusetts (69%) than males (57%), and less born outside the U.S. (6%) than males (10%).

### Education

- Sixty-six percent of the DOC population, who reported an educational level, reported completing 11<sup>th</sup> grade or less. The proportion of males completing grade 12 or higher was 34%, while the proportion for females was 49%. Twelve percent of the population did not report an educational level.

### Last Known Address

- Female commitments<sup>1</sup> were most likely to report a last known address in the Massachusetts counties of Middlesex (17%), Essex (15%), or Worcester (15%). Male commitments were most likely to report a last known address in Suffolk County (22%), Hampden County (16%), or Middlesex County (11%).

### Language

- The majority of the population on January 1, 2008 reported English as their primary language (90%). However, 9% reported a primary language of Spanish.

### Offense

- Sixty percent of the population was incarcerated for a violent offense, including 46% for a Person offense and 13% for a Sex offense. Another 26% were incarcerated for a Drug offense, 8% for a Property offense, and 7% for an “Other” offense. Thus, 40% of the population was incarcerated for a non-violent offense.
- There were significant differences between males and females in the types of crimes for which they were incarcerated. Males were almost twice as likely to be incarcerated for a violent crime (61%) as compared to females (36%).
- Ninety-nine percent of the inmates incarcerated for sex offenses were male (N=1,319) versus female 1% (N = 9).
- The largest number of offenses fell into the Crimes Against a Person category; (47%) for males and (34%) for females, followed by Drug offense; (25%) for males and (31%)for females.
- Seventy-three percent of male drug offenders and 45% of female drug offenders were serving a sentence with a mandatory restriction.

### Sentence Length

- Forty-eight percent of incarcerated females were serving a County sentence<sup>1</sup> and 51% a State Prison sentence. In comparison, 99% of males were serving a State Prison sentence.
- For males, the largest portion of minimum sentences fell into three categories: Life sentences (18%), sentences in the “3 to less than 4 year” range (17%), and sentences in the “5 to less than 6 year” range (12%). For females, the largest portion fell into four categories: sentences “3 to less than 4 years” (11%), “2 to less than 3 years” (8%), Life sentences (8%) and “5 to less than 6 years” (6%).
- Twenty-seven percent of males were serving a maximum sentence length of 20 years or more. Fifty-three percent of females were serving a maximum sentence length of less than 3 years.

---

<sup>1</sup> Not all Massachusetts counties house their female inmates; thus many (almost ½) county criminally sentenced females are in DOC custody and a disproportionate number of female inmates are from some Massachusetts communities.

- Eighteen percent of the jurisdiction population was serving a maximum sentence of Life: 917 for First-Degree Life and 868 for Second-Degree Life sentences. Ninety-seven percent (N=1,735) of those serving Life sentences were male: 51% for First-degree Life and 49% for Second-Degree Life. Eight percent (N=50) of females were serving a Life sentence: 25 for First-Degree Life and 25 for Second-Degree Life.

#### Court Committed From

- Twenty percent of incarcerated individuals were sentenced out of Suffolk Superior Court, 16% from Hampden Superior Court, 12% from Middlesex Superior, and 11% from both Essex and Worcester Superior Courts. This distribution was similar for males. In contrast, 43% of females in DOC Jurisdiction on January 1, 2008 were sentenced from of Massachusetts District Courts.

#### Security Level

- On January 1, 2008 the majority (68%) of the jurisdiction population were incarcerated in medium security level facilities. Seventeen percent were housed in a maximum security facility (level 6). Another 13% were housed in lower security level facilities. The remaining 2% of the population were housed in other jurisdictions' facilities (136 inmates in Massachusetts county facilities and 66 inmates in other state or federal facilities).

## January 1st JURISDICTION Population Trend Highlights

### Number and Gender of Inmates

- Ten year trends in DOC January 1<sup>st</sup> Jurisdiction population show a decline in population from 1999 to 2005, or 20%, followed by a three-year increase in population from 2006 to 2008, or 8%. The DOC Jurisdiction population decreased 9% from 1999 to 2008.
- The January 1, 2008 male DOC Jurisdiction population decreased by 1008 inmates, or 10%, from January 1, 1999. The female custody population decreased by 18 inmates, which is statistically insignificant.

### Race and Ethnicity

- From 1999 to 2008, the proportion of White inmates to the total DOC Jurisdiction population decreased from 46% in 1999 to 42% in 2008, and the proportion of Black inmates decreased from 29% in 1999 to 28% in 2008. Meanwhile, the proportion of Hispanic inmates increased from 24% to 28% during this same ten-year period.
- The number of Native American inmates increased from 31 in 1999 to 58 in 2008 or 87%, while the number of Asian inmates decreased 14% during this period, from 135 to 116. However, as a proportion of the total DOC population, these populations changed little in the ten-year period. Native Americans grew from 0% to 1% of the total DOC Jurisdiction population from 1999 through 2008, while the Asian population remained at 1% of the total during this same period.

### Age

- The median age of inmates in DOC Jurisdiction population has increased from 34 years in 1999 to 37 years in 2008. Mean age shows an increase from 35 years in 1999 to 38 years in 2008.
- Inmates in the 19 or younger category showed the greatest rate of decline (66%) during the ten-year period 1999 to 2008: 215 in 1999 to 73 in 2008. Inmates 30 to 39 years showed a 23% decline during the same period (4,134 to 3,198), with a corresponding 5% decline as a proportion of the total population. Inmates 20 to 29 years showed a 23% decline (3,555 to 2,738), with a 5% decline as a proportion of the population.
- The aging of the criminal population was pronounced during the ten-year period 1999 to 2008. Inmates in the 40 to 64 year category increased 24% (3,131 to 3,892), with a corresponding increase of 10% as a proportion of the population during this period; inmates over 65 years increased 88%, from 123 in 1999 to 231 in 2008.

### Offense

- The proportion of inmates incarcerated for a Crime Against a Person offense fluctuated between 46% and 50% during the ten-year period 1999 to 2008. Though the numbers reflect a slight increase in the proportion of the population, the actual number of inmates incarcerated for a Crime Against a Person, have decreased 9% over the ten-year period.
- Over the period, Drug offenses represented 21% to 26% of the DOC population, while offenses in the "Other" category made up between 3% and 7%. There was an increase in the proportion of offenders incarcerated in both offense categories when comparing the 2007 to 2008 population.

- Sex Offenses reached a ten-year low in the 2008 DOC Jurisdiction population. There were 1,328 inmates incarcerated for a Sex offense in 2008 representing 13% of the population. The ten-year high was in 1999 with 1,939 inmates, representing 17% of the population. The number of Sex offenders decreased 32% from 1999 to 2008.
- Property offenses decreased 36% over the ten-year period, from 1,237 in 1999 to 791 in 2008. The ten-year low was in 2004 with 722 inmates, representing 8% of the population
- The percentage of inmates incarcerated for Crimes of Violence, defined as any offense which falls under Person or Sex categories, declined 15% over the ten-year period (7,080 to 6,032), and as a proportion of the total DOC population declined from 63% in 1999 to 60% in 2008.

#### Sentence Length<sup>2</sup>

- The number of inmates serving sentences with “No Minimum Term” declined 60% during the ten-year period 1999 – 2008, from 1,055 to 419. In addition, there was a decline from 9% in 1999 to 4% in 2008 as a proportion of the total. The number of inmates with minimum sentences of “less than 5 years” decreased 27% from 1999 to 2005, but then increased 19% from 2006 to 2008.
- The proportion of inmates with maximum sentences of “less than 5 years” remained relatively stable at 22% from 1999 to 2004 but then increased from 23% in 2005 to 26% in 2008, representing an 8% increase in the number serving “less than 5 year” sentences, during this ten-year period. Maximum sentences of “20 years or more” decreased 47% from 1999 to 2008, representing 14% of the total DOC population in 1999 and 8% of the total in 2008.
- There was a 16% increase in the number of inmates in the DOC population serving Life sentences from 1999 to 2008, with a 34% increase in First-Degree Life sentences and a 2% increase in Second-Degree life sentences. The proportion of the total DOC population serving a Life sentence increased from 14% at the beginning of the ten-year period to 18% in 2008.

---

<sup>2</sup>On January 12, 1994, the Governor signed into law an Act to Promote the Effective Management of the Criminal Justice System, St. 1993, c. 432, generally known as the “Truth in Sentencing” Law. Sentencing for offenses committed after June 30, 1994 are significantly affected by this law. For further discussion on some of the changes due to Truth in Sentencing refer to “Sentence/Sentence Type” in report Glossary



## **Table of Contents**

<b>Acknowledgments.....</b>	<b>i</b>
<b>Report Population .....</b>	<b>ii</b>
<b>Executive Summary.....</b>	<b>iii</b>
<b>January 1<sup>st</sup> Jurisdiction Population Trend Highlights .....</b>	<b>vi</b>
<b>Table of Contents.....</b>	<b>viii</b>
<b>Introduction .....</b>	<b>1</b>
 <b><u>January 1, 2008 DOC Jurisdiction Population, Tables and Figures</u></b>	
<b>Demographic Characteristics of the DOC Jurisdiction Population (Self-Reported) .....</b>	<b>3</b>
Table 1: DOC Jurisdiction Population 2007 vs. 2008 .....	4
Figure 1: DOC Jurisdiction Population 2007 vs. 2008.....	4
Table 2: Race by Gender .....	4
Table 3: Age on January 1, 2008 by Gender .....	5
Table 4: Age at Incarceration by Gender.....	6
Table 5: Marital Status by Gender.....	7
Table 6: Culture by Gender .....	7
Table 7: Citizenship by Gender .....	8
Table 8: Religion by Gender .....	8
Table 9: Education Level by Gender .....	9
Table 10: Last Known Address (by County) by Gender .....	9
Table 11: Primary Language by Gender.....	10
Table 12: English Comprehension by Gender.....	10
Table 13: Place of Birth by Gender .....	10
<b>Current Offense DOC Jurisdiction Population .....</b>	<b>11</b>
Table 14: Current Offense Categories by Gender .....	12
Figure 2: Current Offense: Violent vs. Non-Violent Female/Male .....	12
Table 15: Person Offenses by Gender .....	13
Table 16: Sex Offenses by Gender .....	14
Table 17: Property Offenses by Gender .....	15
Table 18: Drug Offenses by Gender .....	16
Table 19: Other Offenses by Gender.....	17
<b>Sentencing and Security Levels DOC Jurisdiction Population .....</b>	<b>18</b>
Table 20: Sentence Type by Gender.....	19
Table 21: Minimum Sentence by Gender .....	19
Table 22: Maximum Sentence by Gender .....	20
Table 23: Life Sentences by Gender.....	20
Table 24: Court From Which Committed by Gender .....	21
Table 25: Truth in Sentencing Indicator by Gender .....	21
Table 26: DOC Population by Institution, Security Level by Gender .....	22
<b><u>Trends in the DOC Jurisdiction Population on January 1, 1999 to 2008.....</u></b>	<b>23</b>
Table 27: Gender: January 1, 1999 to January 1, 2008 .....	24
Figure 3: DOC Jurisdiction Population: January 1, 1999 to January 1, 2008 .....	24
Table 28: Race/Ethnicity: January 1, 1999 to January 1, 2008 .....	25
Figure 4: Race/Ethnicity: January 1, 1999 to January 1, 2008.....	25
Table 29: Age as of January 1: January 1, 1999 to January 1, 2008 .....	26
Figure 5: Age as of January 1: January 1, 1999 to January 1, 2008 .....	26
Table 30: Current Offense Categories: January 1, 1999 to January 1, 2008 .....	27
Figure 6: Current Offense Categories: January 1, 1999 to January 1, 2008.....	27
Table 31: Minimum Sentence: January 1, 1999 to January 1, 2008 .....	28
Figure 7: Minimum Sentence: January 1, 1999 to January 1, 2008 .....	28
Table 32: Maximum Sentence: January 1, 1999 to January 1, 2008 .....	29
Figure 8: Maximum Sentence: January 1, 1999 to January 1, 2008.....	29
Table 33: Life Sentences: January 1, 1999 to January 1, 2008 .....	30
Figure 9: Life Sentences: January 1, 1999 to January 1, 2008.....	30
<b>Glossary .....</b>	<b>31</b>
<b>Appendix .....</b>	<b>36</b>

## **Introduction**

This publication marks the **tenth year reporting the jurisdiction population**. This definition includes the Massachusetts Department of Correction (DOC) criminally sentenced population on January 1, 2008 incarcerated in DOC facilities as well as DOC inmates serving time in correctional facilities outside of the DOC (Massachusetts Houses of Correction, other states' correctional facilities and the Federal Bureau of Prisons). This population is referred to as "DOC jurisdiction population" in this report.

The information in this report is a "snapshot" composition of the inmate jurisdiction population on January 1, 2008. Throughout the rest of the body of this report, the phrase "in 2008" is substituted for "the DOC jurisdiction population on January 1, 2008".

The population described in this report is comprised of inmates incarcerated as a result of a *criminal* commitment in DOC facilities as well as DOC inmates serving time outside of the DOC (Massachusetts Houses of Correction, other states' correctional facilities and the Federal Bureau of Prisons). This includes **county, federal, and other states'** inmates transferred to a DOC facility who were in DOC *jurisdiction* on January 1, 2008 (N = 202). The breakdown of the total DOC criminally sentenced *jurisdiction* population is as follows:

<b>10,132</b>	<b>(100%)</b>	<b>Total DOC <i>jurisdiction</i> population</b>
9,930	(98%)	Housed in DOC
136	(1%)	Housed in County Correctional Facilities
66	(1%)	Federal and other states' correctional facilities

**Excluded** from this report are individuals in DOC facilities on January 1, 2008, who were *not* serving a *criminal* sentence (civil commitments and pre-trial/awaiting trial detainees). The civil commitment population was excluded because the reporting system is not as extensive as and different for criminal commitments. Consequently, most of the data for civil commitments would fall in the "not reported" categories of the tables.

Individuals that are pre-trial or awaiting trial are not sentenced. Also, limited information is available about this population. They are not sentenced therefore their offense and sentencing information is not applicable.

Populations excluded from this report are as follows:

<b>656</b>	<b>(100%)</b>	<b>Total Civil Commitments at the DOC</b>
266	(41%)	Treatment Center for Sexually Dangerous
238	(36%)	Bridgewater State Hospital
140	(21%)	Massachusetts Alcohol and Substance Abuse Center
8	(1%)	MCI-Framingham
2	(0%)	Shattuck Correctional Hospital Unit
1	(0%)	MCI-Shirley
1	(0%)	Souza-Baranowski Correctional Facility
<b>576</b>	<b>(100%)</b>	<b>Total Pre-Trial/Awaiting Trial at the DOC</b>
239	(41%)	Awaiting Trial males in a DOC facility
167	(29%)	Awaiting Trial females at MCI-Framingham
109	(19%)	Awaiting Trial males at Plymouth House of Correction (52A's)
51	(9%)	Male Federal Detainees
10	(2%)	Female Federal Detainees

This report is organized into two main sections. The first section presents tables and charts describing the January 1, 2008 DOC *jurisdiction* population. This section depicts inmate demographic characteristics, information about criminal offenses for the inmate population, and data regarding sentencing, such as court from which committed, type of sentence, and sentence lengths. A table that shows the placement of DOC inmates by facility and security level is also included. Trend tables comprise the second section of the report and are based on the DOC *jurisdiction* population for the last ten years. Prior to that, January 1<sup>st</sup> data was reported on custody population.

Tables and charts are presented in each section of the report. If data is unavailable for certain years, it is denoted by "NA" (not available) in the table.

Please note that due to rounding, some of the tables may not add to 100%.

The Glossary beginning on page 31 provides definitions of terms used in this report and addresses some methodological issues.

---

Demographic Characteristics  
of the DOC Jurisdiction Population  
(Self-Reported)

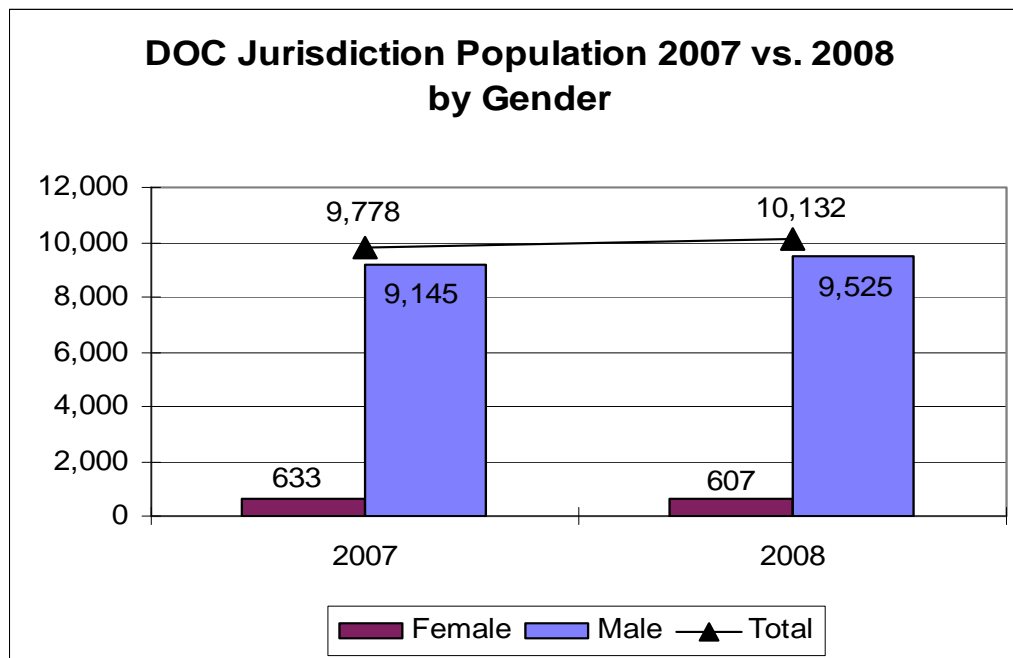
---

Please note that due to rounding, some of the tables may not add to 100%.

**Table 1: DOC Jurisdiction Population 2007 vs. 2008**

	DOC Population January 1, 2007		DOC Population January 1, 2008		Number Change 2007 - 2008	% Change 2007 - 2008
	#	(%)	#	(%)	#	(%)
Female	633	6	607	6	-26	-4
Male	9,145	94	9,525	94	+380	+4
<b>Total</b>	<b>9,778</b>	<b>100</b>	<b>10,132</b>	<b>100</b>	<b>+354</b>	<b>+4</b>

**Figure 1**



**Table 2: Race/Ethnicity by Gender (Self-Reported)**

	Female		Male		Total	
		(%)		(%)		(%)
White	388	64	3,864	41	4,252	42
Hispanic	105	17	2,762	29	2,867	28
Black	98	16	2,706	28	2,804	28
Asian	3	0	113	1	116	1
American Indian/Alaska Native	1	0	57	1	58	1
Native Hawaiian/Pacific Islander	0	0	1	0	1	0
Other	12	2	22	0	34	0
<b>Total</b>	<b>607</b>	<b>100</b>	<b>9,525</b>	<b>100</b>	<b>10,132</b>	<b>100</b>

See Glossary, Race/Ethnicity.

**Table 3: Age on January 1, 2008 by Gender (Self-Reported)**

	<b>Female</b>	<b>(%)</b>	<b>Male</b>	<b>(%)</b>	<b>Total</b>	<b>(%)</b>
17 yrs	0	0	1	0	1	0
18 yrs	0	0	16	0	16	0
19 yrs	2	0	54	1	56	1
20 yrs	9	1	91	1	100	1
21 yrs	9	1	158	2	167	2
22 yrs	12	2	192	2	204	2
23 yrs	17	3	222	2	239	2
24 yrs	13	2	250	3	263	3
25-29 yrs	104	17	1,661	17	1,765	17
30-34 yrs	94	15	1,510	16	1,604	16
35-39 yrs	104	17	1,490	16	1,594	16
40-44 yrs	115	19	1,290	14	1,405	14
45-49 yrs	74	12	1,029	11	1,103	11
50-54 yrs	32	5	700	7	732	7
55-59 yrs	14	2	397	4	411	4
60-64 yrs	6	1	235	2	241	2
65-69 yrs	1	0	131	1	132	1
70 yrs or Old	1	0	98	1	99	1
<b>Total</b>	<b>607</b>	<b>100</b>	<b>9,525</b>	<b>100</b>	<b>10,132</b>	<b>100</b>

Age on January 1, 2008

The mean and median ages were **37.9** and **37** years, respectively (for all commitments).

The mean and median ages for males were **38** and **37** years, respectively.

The mean and median ages for females were **36.7** and **37** years, respectively.

Age on January 1, 2008: Ranges

Females – **19** years to **70** years.

Males – **17** years to **91** years.

**Table 4: Age at Incarceration by Gender (Self-Reported)**

	Female (%)		Male (%)		Total (%)	
15 yrs	0	0	3	0	3	0
16 yrs	0	0	13	0	13	0
17 yrs	1	0	54	1	55	1
18 yrs	2	0	172	2	174	2
19 yrs	3	0	283	3	286	3
20 yrs	12	2	329	3	341	3
21 yrs	20	3	390	4	410	4
22 yrs	19	3	376	4	395	4
23 yrs	18	3	412	4	430	4
24 yrs	19	3	454	5	473	5
25-29 yrs	119	20	1,986	21	2,105	21
30-34 yrs	95	16	1,567	16	1,662	16
35-39 yrs	109	18	1,279	13	1,388	14
40-44 yrs	100	16	1,008	11	1,108	11
45-49 yrs	58	10	630	7	688	7
50-54 yrs	21	3	275	3	296	3
55-59 yrs	6	1	164	2	170	2
60-64 yrs	4	1	67	1	71	1
65-69 yrs	1	0	36	0	37	0
70 yrs or Older	0	0	27	0	27	0
<b>Total</b>	<b>607</b>	<b>100</b>	<b>9,525</b>	<b>100</b>	<b>10,132</b>	<b>100</b>

#### Age at Incarceration

The mean and median ages were **32.4** and **31** years, respectively (for all commitments).

The mean and median ages for males were **32.2** and **30** years, respectively.

The mean and median ages for females were **34.6** and **34** years, respectively.

#### Age at Incarceration: Ranges

Females – **17** years to **67** years.

Males – **15** years to **79** years.

**Table 5: Marital Status by Gender (Self-Reported)**

	<b>Female (%)</b>		<b>Male (%)</b>		<b>Total (%)</b>	
Single	357	59	6,317	66	6,674	66
Divorced	102	17	1,344	14	1,446	14
Married	90	15	1,329	14	1,419	14
Separated	36	6	324	3	360	4
Widow-Widower	21	3	185	2	206	2
Partner-Livein	1	0	24	0	25	0
Not Reported	0	0	2	0	2	0
<b>Total</b>	<b>607</b>	<b>100</b>	<b>9,525</b>	<b>100</b>	<b>10,132</b>	<b>100</b>

**Table 6: Culture by Gender (Self-Reported)**

	<b>Female (%)</b>		<b>Male (%)</b>		<b>Total (%)</b>	
American	204	34	7,042	74	7,246	72
Puerto Rican	93	15	1,359	14	1,452	14
Dominican	12	2	218	2	230	2
Irish	108	18	55	1	163	2
African	15	2	101	1	116	1
Cape Verdean	12	2	97	1	109	1
Italian	49	8	46	0	95	1
Portuguese	13	2	57	1	70	1
French	28	5	29	0	57	1
Columbian	2	0	56	1	58	1
Cambodian	2	0	46	0	48	0
Spanish	8	1	39	0	47	0
Jamaican	3	0	34	0	37	0
Haitian	1	0	31	0	32	0
Native American	2	0	30	0	32	0
Vietnamese	0	0	26	0	26	0
Other**	55	9	259	3	314	3
<b>Total</b>	<b>607</b>	<b>100</b>	<b>9,525</b>	<b>100</b>	<b>10,132</b>	<b>100</b>

\*\* Details on cultures included in the "Other" category are available in the Glossary.



**Table 7: Citizenship by Gender (Self-Reported)**

	<b>Female (%)</b>		<b>Male (%)</b>		<b>Total (%)</b>	
United States	578	95	8,677	91	9,255	91
Dominican Republic	12	2	328	3	340	3
Columbia	3	0	67	1	70	1
Jamaica	2	0	55	1	57	1
Cambodia	1	0	33	0	34	0
El Salvador	2	0	32	0	34	0
Haiti	2	0	32	0	34	0
Portugal	1	0	31	0	32	0
Cape Verde Islands	0	0	31	0	31	0
Cuba	1	0	28	0	29	0
Vietnam	0	0	22	0	22	0
Guatemala	0	0	21	0	21	0
Brazil	1	0	18	0	19	0
Other**	4	1	150	2	154	2
<b>Total</b>	<b>607</b>	<b>100</b>	<b>9,525</b>	<b>100</b>	<b>10,132</b>	<b>100</b>

\*\* Details on citizenships included in the “Other” category listed in the Glossary.

**Table 8: Religion by Gender (Self-Reported)**

		<b>Female (%)</b>		<b>Male (%)</b>		<b>Total (%)</b>	
<b>Christian</b>	Catholic	323	53	3,880	41	4,203	41
	Christian	8	1	1,034	11	1,042	10
	Protestant	47	8	599	6	646	6
	Baptist	34	6	441	5	475	5
	Other Christian*	43	7	323	3	366	4
	Pentecostal	14	2	247	3	261	3
<b>Non Christian</b>	Islam	6	1	604	6	610	6
	Agnostic	1	0	299	3	300	3
	Buddhist	8	1	141	1	149	1
	Jewish	5	1	96	1	101	1
	Other**	20	3	317	3	337	3
	Reported No Religion	97	16	1,537	16	1,634	16
	Not Reported	1	0	7	0	8	0
	<b>Total</b>	<b>607</b>	<b>100</b>	<b>9,525</b>	<b>100</b>	<b>10,132</b>	<b>100</b>

\* Includes all other Christian religions not listed separately in the above table.

\*\* Details on religions included in the “Other” category are available in the Glossary.

**Table 9: Education Level\* by Gender (Self-Reported)**

	Female (%)		Male (%)		Total (%)	
3rd Grade or Less	0	0	76	1	76	1
4th Grade	0	0	54	1	54	1
5th Grade	0	0	79	1	79	1
6th Grade	9	1	173	2	182	2
7th Grade	11	2	282	3	293	3
8th Grade	29	5	702	7	731	7
9th Grade	51	8	1,219	13	1,270	13
10th Grade	74	12	1,498	16	1,572	16
11th Grade	72	12	1,489	16	1,561	15
High School Grad/GED	169	28	2,639	28	2,808	28
Some College	46	8	99	1	145	1
Bachelors	16	3	62	1	78	1
Masters	5	1	19	0	24	0
PHD	0	0	3	0	3	0
Not Reported	125	21	1,131	12	1,256	12
<b>Total</b>	<b>607</b>	<b>100</b>	<b>9,525</b>	<b>100</b>	<b>10,132</b>	<b>100</b>

Levels represent last grade completed as reported at the time of admission.

Sixty-six percent of offenders who reported an education level completed grade 11 or less; 66% for males and 51% for females. Thirty-four percent of offenders who reported an education level reported that they received a High School Diploma/GED or above. Forty-nine percent of females and 34% of males reported having an education level higher than eleventh grade.

**Table 10: Last Known Address (by County) by Gender (Self-Reported at time of admission)**

	Female (%)		Male (%)		Total (%)	
Suffolk County	70	12	2,052	22	2,122	21
Hampden County	58	10	1,544	16	1,602	16
Middlesex County	101	17	1,085	11	1,186	12
Essex County	89	15	969	10	1,058	10
Worcester County	90	15	943	10	1,033	10
Bristol County	33	5	721	8	754	7
Plymouth County	63	10	555	6	618	6
Norfolk County	41	7	325	3	366	4
Berkshire County	14	2	261	3	275	3
Barnstable County	9	1	194	2	203	2
Hampshire County	3	0	104	1	107	1
Franklin County	3	0	75	1	78	1
Dukes County	1	0	8	0	9	0
Nantucket County	0	0	5	0	5	0
MA-County Unknown	0	0	3	0	3	0
Out-Of-State	32	5	681	7	713	7
<b>Total</b>	<b>607</b>	<b>100</b>	<b>9,525</b>	<b>100</b>	<b>10,132</b>	<b>100</b>

**Table 11: Primary Language by Gender (Self-Reported)**

	Female (%)		Male (%)		Total (%)	
English	541	89	8,536	90	9,077	90
Spanish	61	10	900	9	961	9
Portuguese	3	0	21	0	24	0
Vietnamese	0	0	15	0	15	0
Khmer	0	0	14	0	14	0
French	1	0	7	0	8	0
Chinese	0	0	7	0	7	0
Russian	0	0	7	0	7	0
Other**	1	0	18	0	19	0
Not Reported	0	0	0	0	0	0
<b>Total</b>	<b>607</b>	<b>100</b>	<b>9,525</b>	<b>100</b>	<b>10,132</b>	<b>100</b>

\*\* Details on languages included in the "Other" category are available in the Glossary. See Primary Language.

**Table 12: English Comprehension by Gender (Self-Reported)**

	Female (%)		Male (%)		Total (%)	
Yes	412	68	9,160	96	9,572	94
No	2	0	60	1	62	1
Not Reported	193	32	305	3	498	5
<b>Total</b>	<b>607</b>	<b>100</b>	<b>9,525</b>	<b>100</b>	<b>10,132</b>	<b>100</b>

This information is self-reported at the time of booking.

**Table 13: Place Of Birth by Gender (Self-Reported)**

	Female (%)		Male (%)		Total (%)	
Massachusetts	421	69	5,434	57	5,855	58
Puerto Rico	44	7	1,163	12	1,207	12
New York	29	5	613	6	642	6
Connecticut	7	1	159	2	166	2
New Jersey	7	1	122	1	129	1
Rhode Island	3	0	100	1	103	1
New Hampshire	7	1	57	1	64	1
Maine	6	1	54	1	60	1
Vermont	2	0	16	0	18	0
Outside US**	37	6	947	10	984	10
Other US States*	44	7	860	9	904	9
<b>Total</b>	<b>607</b>	<b>100</b>	<b>9,525</b>	<b>100</b>	<b>10,132</b>	<b>100</b>

\* Other US States - Includes all other US States not listed separately in the above table.

\*\* Outside US – Includes all other countries outside the US, excluding Puerto Rico.

---

## Current Offense of the DOC Jurisdiction Population

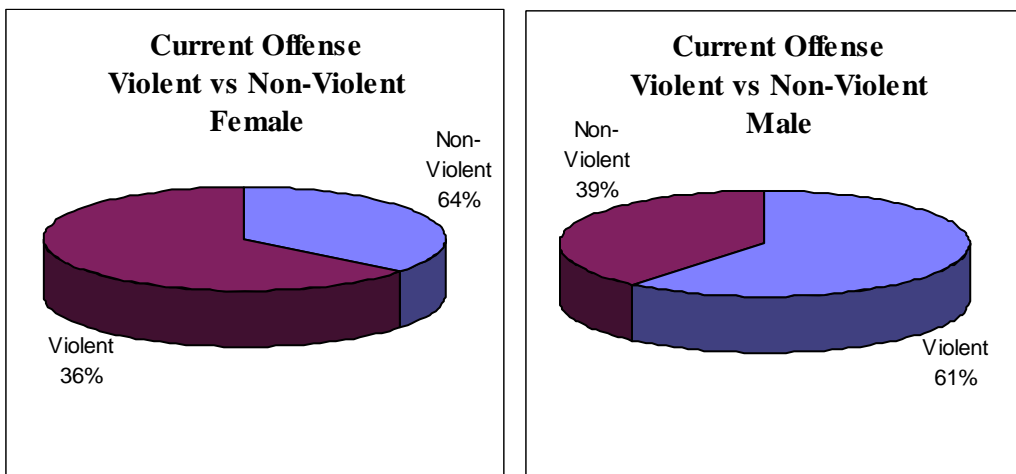
---

**Table 14: Current Offense Categories by Gender**

		Female (%)		Male (%)		Total (%)	
Violent Offenses	Person	209	34	4,495	47	4,704	46
	Sex	9	1	1,319	14	1,328	13
Non-Violent Offenses	Property	108	18	683	7	791	8
	Drug	189	31	2,421	25	2,610	26
	Other	92	15	607	6	699	7
<b>Total</b>		<b>607</b>	<b>100</b>	<b>9,525</b>	<b>100</b>	<b>10,132</b>	<b>100</b>

Individuals may be incarcerated for multiple offenses. The offense reported is associated with the longest maximum discharge date ("governing offense"). For description & examples, see Appendix.

**Figure 2**



A violent offense is any offense that falls under the Person or Sex Offense categories, See Appendix.

**Table 15: Person Offenses by Gender**

	<b>Female (%)</b>		<b>Male (%)</b>		<b>Total (%)</b>	
Armed Robbery	36	17	1,057	24	1,093	23
Murder 1st Degree	25	12	892	20	917	19
Murder 2nd Degree	23	11	689	15	712	15
Assault/A&B with a Dangerous Weapon	27	13	425	9	452	10
Manslaughter	30	14	305	7	335	7
Assault with Intent to Rob or Murder, Being Armed	1	0	316	7	317	7
Unarmed Robbery	7	3	287	6	294	6
Kidnapping	1	0	64	1	65	1
Home Invasion	3	1	58	1	61	1
Assault and Assault & Battery	19	9	39	1	58	1
Armed Asslt in Dwelling House	0	0	44	1	44	1
Mayhem	1	0	38	1	39	1
Vehicular Homicide	11	5	26	1	37	1
Unarmed Robbery, Victim 60+	7	3	29	1	36	1
Carjacking	0	0	34	1	34	1
Assault W/Intent to Commit Murder	1	0	31	1	32	1
Asslt W/Intent to Commit a Felony	0	0	21	0	21	0
Attempted Murder	2	1	19	0	21	0
Accessory After the Fact	2	1	16	0	18	0
Assault and Battery Upon a Child	2	1	15	0	17	0
Accessory Before the Fact	2	1	14	0	16	0
Assault to Rob Not Being Armed	2	1	13	0	15	0
Armed Asslt W/Intent to Rob/Murder, Victim 60+	1	0	11	0	12	0
Conspiracy	3	1	8	0	11	0
Confine/Put in Fear for the Purpose of Stealing	0	0	10	0	10	0
A&B Upon Elderly/Disabled	2	1	5	0	7	0
Murder 2nd - Juvenile Offender Law	0	0	6	0	6	0
Murder 1st - Juvenile Offender Law	0	0	6	0	6	0
Extortion	0	0	6	0	6	0
A&B Dangerous Weapon, Victim 60+	1	0	4	0	5	0
Stalking	0	0	4	0	4	0
Assault with a Dangerous Weapon Victim 60+	0	0	3	0	3	0
<b>Total</b>	<b>209</b>	<b>100</b>	<b>4,495</b>	<b>100</b>	<b>4,704</b>	<b>100</b>

Please note: The offenses are arranged in descending order by total count of the offense.  
For definitions and explanations, see Appendix, Person Offense.

For offenders in the Person offense category, the most common offenses for males were Armed Robbery (24%), Murder 1<sup>st</sup> Degree (20%) and Murder 2<sup>nd</sup> Degree (15%). For female offenders in the Person offense category, the most common offenses were Armed Robbery (17%), Manslaughter (14%), Assault/A&B with a Dangerous Weapon (13%), Murder 1<sup>st</sup> Degree (12%), and Murder 2<sup>nd</sup> Degree (11%).

**Table 16: Sex Offenses by Gender**

	Female (%)		Male (%)		Total (%)	
Rape and Abuse of a Child	1	11	388	29	389	29
Rape of a Child with Force	3	33	277	21	280	21
Aggravated Rape	0	0	227	17	227	17
Rape	2	22	184	14	186	14
Indecent Asslt & Battery on Child Under 14	0	0	109	8	109	8
Assault With Intent to Commit Rape	0	0	45	3	45	3
Sex Offenses Involving a Minor	2	22	27	2	29	2
Indecent Asslt & Battery on Victim 14 or Older	0	0	19	1	19	1
Assault With Intent to Commit Rape, Child Under 16	0	0	12	1	12	1
Other Sex Offenses	0	0	11	1	11	1
Sexual Assault - Out of State/Federal Inmates	1	11	6	0	7	1
Incest	0	0	4	0	4	0
Unnatural Acts with Child Under 16	0	0	4	0	4	0
Violations of Sex Offender Registry	0	0	4	0	4	0
Indecent A&B on Mentally Retarded Victim	0	0	2	0	2	0
<b>Total</b>	<b>9</b>	<b>100</b>	<b>1,319</b>	<b>100</b>	<b>1,328</b>	<b>100</b>

Please note: The offenses are arranged in descending order by total count of the offense.  
For definitions & explanations, see Appendix, Sex Offense.

On January 1, 2008, 13% of the population was incarcerated for a Sex offense. Males made up the majority with the most common offenses being Rape and Abuse of a Child (29%), Rape of a Child with Force (21%), and Aggravated Rape (17%). There were nine females incarcerated for a Sex Offense, with the most common offenses being Rape of a Child with Force (n = 3), Rape (n = 2), and Sex Offenses Involving a Minor (n = 2).

**Table 17: Property Offenses by Gender**

	<b>Female (%)</b>		<b>Male (%)</b>		<b>Total (%)</b>	
Unarmed Burglary/Breaking and Entering	10	9	394	58	404	51
Larceny/Stealing	43	40	43	6	86	11
Burglary, Armed or an Assault	1	1	56	8	57	7
Theft of a Motor Vehicle/Non-Motor Vehicle	2	2	51	7	53	7
Arson and Attempted Arson	1	1	49	7	50	6
Forgery and Uttering	14	13	12	2	26	3
Receiving Stolen Goods	3	3	19	3	22	3
Destruction of Property	4	4	16	2	20	3
Larceny From the Person	7	6	9	1	16	2
Shoplifting	14	13	0	0	14	2
Fraud	7	6	5	1	12	2
Possession of Burglary Tools	0	0	12	2	12	2
Common and Notorious Thief	1	1	10	1	11	1
Larceny from Elder or Disabled Person	1	1	6	1	7	1
Embezzlement	0	0	1	0	1	0
<b>Total</b>	<b>108</b>	<b>100</b>	<b>683</b>	<b>100</b>	<b>791</b>	<b>100</b>

Please note: The offenses are arranged in descending order by total count of the offense.  
For definitions & explanations, see Appendix, Property Offense.

In the Property offense category, the most common offenses among males were Unarmed Burglary/Breaking and Entering (58%), Burglary, Armed or an Assault (8%), Theft of a Motor Vehicle/Non-Motor Vehicle (7%) and Arson and Attempted Arson (7%). For females the most common offenses were Larceny/Stealing (40%), Forgery and Uttering (13%), Shoplifting (13%), and Unarmed Burglary/Breaking and Entering (9%).



Table 18: Drug Offenses by Gender

	Female (%)		Male (%)		Total (%)	
*Specific Class B Trafficking 14-28 Grams	14	7	387	16	401	15
*Specific Class B Trafficking 28-100 Grams	11	6	382	16	393	15
Class A Distribution or Possession w/Intent to Distribute	30	16	343	14	373	14
Class B Distribution or Possession w/Int to Distribute	36	19	282	12	318	12
*Specific Class B Distribution or Poss w/Int to Distribute	15	8	224	9	239	9
*Specific Class B Trafficking 100-200 Grams	4	2	167	7	171	7
*Drug Violation, School/Park	18	10	108	4	126	5
*Specific Class B Trafficking 200+ Grams	8	4	109	5	117	4
*Specific CL B Possession w/Int to Distribute, Subsequent	3	2	106	4	109	4
*Class B Distribution or Poss w/Int to Dist, Subsequent	1	1	92	4	93	4
*Class A Distribution or Poss w/Int to Dist, Subsequent	5	3	84	3	89	3
*Class A Trafficking 14-28 Grams	4	2	46	2	50	2
*Class A Trafficking 28-100 Grams	1	1	37	2	38	1
Possession of Controlled Substance - No Class Specified	33	17	2	0	35	1
Conspiracy to Violate Controlled Substance Act	2	1	14	1	16	1
*Class A Trafficking 200+ Grams	1	1	10	0	11	0
Possession of Controlled Substance - Class A	1	1	9	0	10	0
*Class A Trafficking 100-200 Grams	0	0	9	0	9	0
*Class B Distribution or Poss w/Int to Dist to Minor	0	0	2	0	2	0
Class C Distribution or Possession w/Int to Distribute	0	0	2	0	2	0
Induce Minors in Sale and Distribution of Drugs	1	1	1	0	2	0
*Class D Trafficking 100-2,000 Lbs	0	0	1	0	1	0
*Class D Trafficking 50-100 Lbs	0	0	1	0	1	0
Class D Distribution or Possession w/Int to Distribute	0	0	1	0	1	0
Possession of Controlled Substance - Class D	0	0	1	0	1	0
Possession of Hypodermic Syringe/Instrument	1	1	0	0	1	0
Theft/Larceny of Drugs	0	0	1	0	1	0
<b>Total</b>	<b>189</b>	<b>100</b>	<b>2,421</b>	<b>100</b>	<b>2,610</b>	<b>100</b>

\* Denotes an offense with a mandatory restriction.

Please note: Offenses are arranged in descending order by total count of the offense.

For definitions & explanations, see Appendix, Drug Offense.

### **Subtotals –Mandatory\* Drug Offenses:**

Females: 85 (45%)

Males: 1,765 (73%)

**Total Mandatory Drug Offenses: 1,850 (71%)**

*Note: Percents represent the percentage of total DRUG offenses that are mandatory.*

In the Drug offense category, the most common offenses among males were Specific Class B Trafficking 14-28 Grams (16%), Specific Class B Trafficking 28-100 Grams (16%), Class A Distribution or Possession w/Intent to Distribute (14%), and Class B Distribution or Possession w/Intent to Distribute (12%). For females, the most common offenses were Class B Distribution or Possession w/Intent to Distribute (19%), Possession of a Controlled Substance – No Class Specified (17%), and Class A Distribution or Possession w/Intent to Distribute (16%).

**Table 19: Other Offenses by Gender**

	<b>Female (%)</b>		<b>Male (%)</b>		<b>Total (%)</b>	
Other Weapons Offense	1	1	311	51	312	45
Weapons Violation, Bartley Fox Gun Law	3	3	132	22	135	19
OUI Alcohol or Drugs, With or Without Injury	40	43	87	14	127	18
Intimidation of a Witness/Juror	2	2	25	4	27	4
Prostitution	19	21	0	0	19	3
Escape	1	1	17	3	18	3
Other Motor Vehicle Offenses	9	10	4	1	13	2
Perjury/Contempt of Court	3	3	10	2	13	2
Attempt to Commit a Crime	0	0	8	1	8	1
Habitual Criminal	1	1	5	1	6	1
Other Decency/Public Peace Crimes	4	4	0	0	4	1
Resisting Arrest	4	4	0	0	4	1
Delivering/Receiving Articles for Inmates	0	0	3	0	3	0
Domestic Abuse Prevention	1	1	2	0	3	0
Cruelty to Animals	1	1	1	0	2	0
Leave the Scene of Vehicular Accident	2	2	0	0	2	0
Deriving Support from a Prostitute	0	0	1	0	1	0
Loan Sharking/Usury	0	0	1	0	1	0
Obstruction of Justice	1	1	0	0	1	0
<b>Total</b>	<b>92</b>	<b>100</b>	<b>607</b>	<b>100</b>	<b>699</b>	<b>100</b>

For definitions & explanations, see Appendix, Other Offense.

For offenses in the “Other” offense category, the most common offenses for males were Other Weapons Offenses (51%), Weapons Violation, Bartley Fox Gun Law (22%), and OUI Alcohol or Drugs, with or without injury (14%); for females, OUI Alcohol or Drugs, with or without injury (43%), Prostitution (21%) and Other Motor Vehicle Offenses (10%).

---

Sentencing and Security Levels of the DOC Jurisdiction  
Population

---

**Table 20: Sentence Type by Gender**

	Female (%)		Male (%)		Total (%)	
Other State, Federal	7	1	61	1	68	1
County	290	48	18	0	308	3
Reformatory	1	0	55	1	56	1
State Prison	309	51	9,391	99	9,700	96
<b>Total</b>	<b>607</b>	<b>100</b>	<b>9,525</b>	<b>100</b>	<b>10,132</b>	<b>100</b>

For an explanation, see Glossary, Sentence/Sentence Type.

**Table 21: Minimum Sentence by Gender**

	Female (%)		Male (%)		Total (%)	
Less than 1 Yr	0	0	0	0	0	0
1 to Less Than 2 Yrs	13	2	169	2	182	2
2 to Less Than 3 Yrs	50	8	785	8	835	8
3 to Less Than 4 Yrs	69	11	1,581	17	1,650	16
4 to Less Than 5 Yrs	29	5	762	8	791	8
5 to Less Than 6 Yrs	39	6	1,107	12	1,146	11
6 to Less Than 7 Yrs	8	1	418	4	426	4
7 to Less Than 8 Yrs	7	1	400	4	407	4
8 to Less Than 9 Yrs	9	1	373	4	382	4
9 to Less Than 10 Yrs	2	0	195	2	197	2
10 to Less Than 11 Yrs	11	2	590	6	601	6
11 to Less Than 12 Yrs	0	0	42	0	42	0
12 to Less Than 13 Yrs	7	1	262	3	269	3
13 to Less Than 14 Yrs	0	0	51	1	51	1
14 to Less Than 15 Yrs	0	0	48	1	48	0
15 to Less Than 16 Yrs	12	2	317	3	329	3
16 to Less Than 17 Yrs	0	0	30	0	30	0
17 to Less Than 18 Yrs	0	0	19	0	19	0
18 to Less Than 19 Yrs	2	0	113	1	115	1
19 to Less Than 20 Yrs	3	0	34	0	37	0
20+ Yrs	7	1	388	4	395	4
Life	47	8	1,714	18	1,761	17
<b>Subtotal</b>	<b>315</b>	<b>52</b>	<b>9,398</b>	<b>99</b>	<b>9,713</b>	<b>96</b>
No Minimum	292	48	127	1	419	4
<b>Total</b>	<b>607</b>	<b>100</b>	<b>9,525</b>	<b>100</b>	<b>10,132</b>	<b>100</b>

For an explanation, see Glossary, Minimum Sentence.

**Table 22: Maximum Sentence by Gender**

	<b>Female</b>	<b>(%)</b>	<b>Male</b>	<b>(%)</b>	<b>Total</b>	<b>(%)</b>
Less Than 1 Year*	103	17	1	0	104	1
1 to Less Than 2 Yrs	100	16	70	1	170	2
2 to Less Than 3 Yrs	118	19	343	4	461	5
3 to Less Than 4 Yrs	56	9	1,090	11	1,146	11
4 to Less Than 5 Yrs	28	5	688	7	716	7
5 to Less Than 6 Yrs	58	10	1,416	15	1,474	15
6 to Less Than 7 Yrs	10	2	483	5	493	5
7 to Less Than 8 Yrs	19	3	545	6	564	6
8 to Less Than 9 Yrs	7	1	280	3	287	3
9 to Less Than 10 Yrs	3	0	222	2	225	2
10 to Less Than 11 Yrs	11	2	754	8	765	8
11 to Less Than 12 Yrs	1	0	51	1	52	1
12 to Less Than 13 Yrs	13	2	365	4	378	4
13 to Less Than 14 Yrs	0	0	54	1	54	1
14 to Less Than 15 Yrs	1	0	52	1	53	1
15 to Less Than 16 Yrs	11	2	410	4	421	4
16 to Less Than 17 Yrs	0	0	32	0	32	0
17 to Less Than 18 Yrs	1	0	29	0	30	0
18 to Less Than 19 Yrs	2	0	82	1	84	1
19 to Less Than 20 Yrs	0	0	8	0	8	0
20+ Years	15	2	815	9	830	8
Life	50	8	1,735	18	1,785	18
<b>Total</b>	<b>607</b>	<b>100</b>	<b>9,525</b>	<b>100</b>	<b>10,132</b>	<b>100</b>

\*Includes one male Out of State inmate with no maximum term.

**Table 23: Life Sentences by Gender**

	<b>Female</b>	<b>(%)</b>	<b>Male</b>	<b>(%)</b>	<b>Total</b>	<b>(%)</b>
First-Degree Life	25	50	892	51	917	51
Second-Degree Life	25	50	843	49	868	49
<b>Total</b>	<b>50</b>	<b>100</b>	<b>1,735</b>	<b>100</b>	<b>1,785</b>	<b>100</b>

Inmates who have been sentenced to life in prison for first-degree murder are not eligible for parole. Inmates who have been sentenced to life in prison for second-degree murder are eligible for parole after serving 15 years of their sentence.

**Table 24: Court From Which Committed by Gender**

	<b>Female (%)</b>		<b>Male (%)</b>		<b>Total (%)</b>	
Suffolk Superior	51	8	1,962	21	2,013	20
Hampden Superior	56	9	1,615	17	1,671	16
Middlesex Superior	50	8	1,191	13	1,241	12
Essex Superior	44	7	1,040	11	1,084	11
Worcester Superior	25	4	1,045	11	1,070	11
Bristol Superior	30	5	783	8	813	8
Plymouth Superior	28	5	637	7	665	7
Norfolk Superior	19	3	348	4	367	4
Berkshire Superior	15	2	302	3	317	3
District Courts	262	43	27	0	289	3
Barnstable Superior	7	1	226	2	233	2
Hampshire Superior	7	1	150	2	157	2
Franklin Superior	5	1	112	1	117	1
Juvenile Courts	0	0	11	0	11	0
Dukes Superior	1	0	9	0	10	0
Nantucket Superior	0	0	5	0	5	0
Probate/Family Courts	0	0	1	0	1	0
Other Jurisdictions	7	1	61	1	68	1
<b>Total</b>	<b>607</b>	<b>100</b>	<b>9,525</b>	<b>100</b>	<b>10,132</b>	<b>100</b>

**Table 25: Truth in Sentencing Indicator by Gender**

	<b>Female (%)</b>		<b>Male (%)</b>		<b>Total (%)</b>	
Yes	575	95	7,786	82	8,361	83
No	25	4	1,678	18	1,703	17
Not Applicable	7	1	61	1	68	1
<b>Total</b>	<b>607</b>	<b>100</b>	<b>9,525</b>	<b>100</b>	<b>10,132</b>	<b>100</b>

Cases categorized as “Not Applicable” are those where the inmate was not sentenced under Massachusetts General Law, i.e., inmates received from another State correctional agency or the Federal Bureau of Prisons. (See Glossary, Truth in Sentencing Indicator.)

**Table 26****DOC Population by Institution, Security Level by Gender**

		Female (%)		Male (%)		Total (%)	
Maximum	MCI-Cedar Junction	-	-	665	7	665	7
	Souza-Baranowski Correctional Center	-	-	1,038	11	1,038	10
	<b>Subtotal</b>	<b>NA</b>	<b>NA</b>	<b>1,703</b>	<b>18</b>	<b>1,703</b>	<b>17</b>
Medium	Bay State Correctional Center	-	-	316	3	316	3
	Bridgewater State Hospital	-	-	117	1	117	1
	Massachusetts Treatment Center	-	-	335	4	335	3
	MCI-Concord	-	-	1,309	14	1,309	13
	MCI-Framingham	459	76	-	-	459	5
	MCI-Norfolk	-	-	1,509	16	1,509	15
	Old Colony Correctional Center	-	-	694	7	694	7
	MCI-Shirley (Medium)	-	-	1,205	13	1,205	12
	North Central Correctional Institution	-	-	971	10	971	10
	Shattuck Hospital Correctional Unit	-	-	18	0	18	0
	<b>Subtotal</b>	<b>459</b>	<b>76</b>	<b>6,474</b>	<b>68</b>	<b>6,933</b>	<b>68</b>
Minimum	Boston Pre-Release Center	-	-	44	0	44	0
	North Central Correctional Institution	-	-	24	0	24	0
	Northeastern Correctional Institution	-	-	213	2	213	2
	MCI-Plymouth	-	-	196	2	196	2
	Pondville	-	-	141	1	141	1
	MCI-Shirley (Minimum)	-	-	147	2	147	2
	South Middlesex Correctional Center	94	15	-	-	94	1
	Old Colony Correctional Center (Minimum)	-	-	149	2	149	2
	<b>Subtotal</b>	<b>94</b>	<b>NA</b>	<b>914</b>	<b>10</b>	<b>1,008</b>	<b>10</b>
Pre-Release	Boston Pre-Release Center	-	-	128	1	128	1
	Northeastern Correctional Center	-	-	54	1	54	1
	Pondville Correctional Center	-	-	55	1	55	1
	South Middlesex Correctional Center	48	1	-	-	48	0
	<b>Subtotal</b>	<b>48</b>	<b>8</b>	<b>237</b>	<b>2</b>	<b>285</b>	<b>3</b>
Contract Pre-Release	Women and Children's Program*	1	0	-	-	1	0
	<b>Subtotal</b>	<b>1</b>	<b>0</b>	<b>NA</b>	<b>NA</b>	<b>1</b>	<b>0</b>
Maximum Security Subtotal (level 6)		<b>0</b>	<b>0</b>	<b>1,703</b>	<b>18</b>	<b>1,703</b>	<b>17</b>
Medium Security Subtotal (level 4)		<b>459</b>	<b>76</b>	<b>6,474</b>	<b>68</b>	<b>6,933</b>	<b>68</b>
Minimum/Pre-Release Subtotal (levels 3, 3/2, 1)		<b>143</b>	<b>24</b>	<b>1,151</b>	<b>12</b>	<b>1,294</b>	<b>13</b>
County/Other State/Federal Facilities		<b>5</b>	<b>1</b>	<b>197</b>	<b>2</b>	<b>202</b>	<b>2</b>
<b>Total</b>		<b>607</b>	<b>100</b>	<b>9,525</b>	<b>100</b>	<b>10,132</b>	<b>100</b>

Note: Cells denoted in the table with a hyphen (-) mean that males or females are not housed in that particular institution, therefore the information is "Not Applicable".

\*The current contracted program is called "Women and Children's Program" and is located in Westboro, MA.

---

Trends in the DOC Jurisdiction Population on January 1<sup>st</sup>  
1999 – 2008

---



**Table 27**

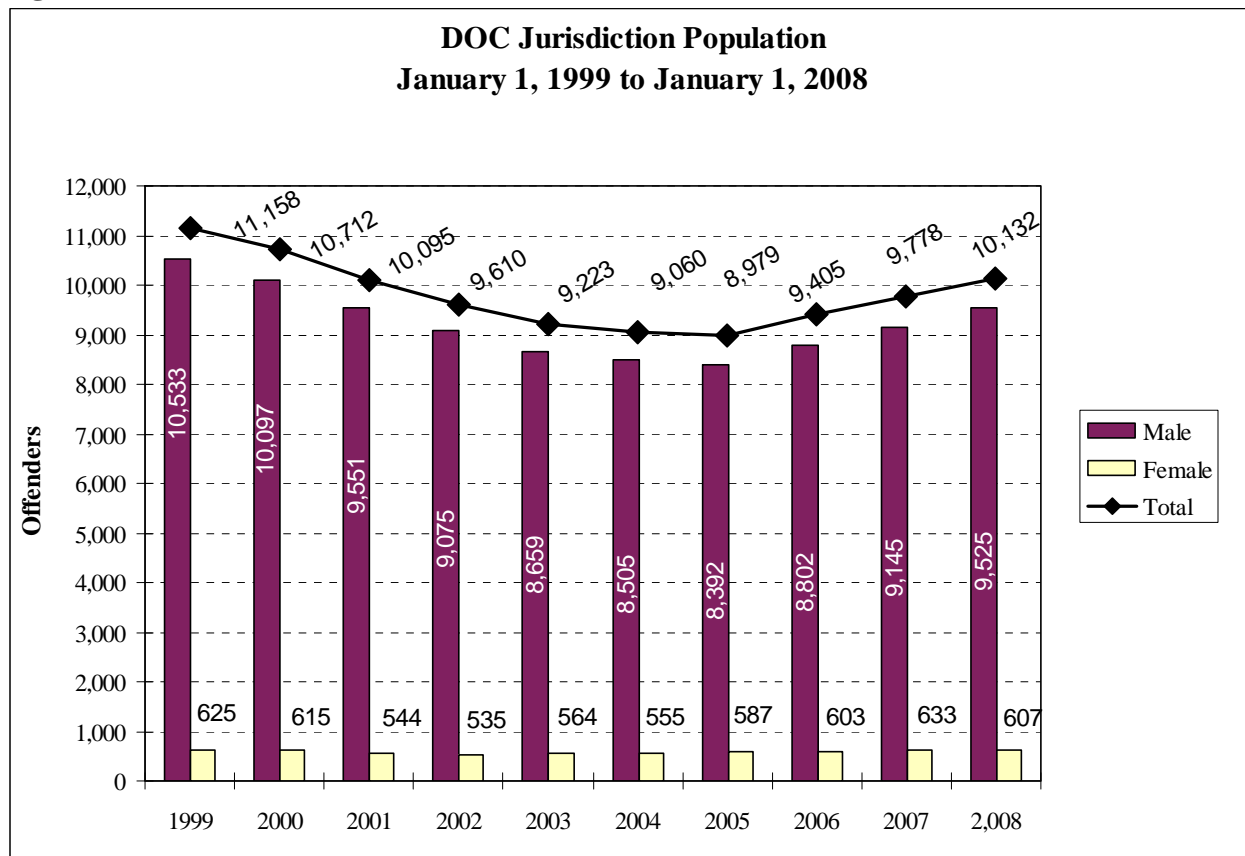
Gender: January 1, 1999 to January 1, 2008

DOC Jurisdiction Population

		1999	2000	2001	2002	2003	2004	2005	2006	2007	2008	% Chng 2007 vs 2008	% Chng 1999 vs 2008
Male	N	10,533	10,097	9,551	9,075	8,659	8,505	8,392	8,802	9,145	9,525	(4%)	-10%
	(%)	(94%)	(94%)	(95%)	(94%)	(94%)	(94%)	(93%)	(94%)	(94%)	(94%)		
Female	N	625	615	544	535	564	555	587	603	633	607	-(4%)	-3%
	(%)	(6%)	(6%)	(5%)	(6%)	(6%)	(6%)	(7%)	(6%)	(6%)	(6%)		
Total		11,158	10,712	10,095	9,610	9,223	9,060	8,979	9,405	9,778	10,132	(4%)	-9%

Please Note: DOC Jurisdiction population consists of criminally sentenced population on January 1<sup>st</sup> incarcerated in DOC facilities as well as DOC inmates serving time in correctional facilities outside of the DOC (Massachusetts Houses of Correction, other states' correctional facilities and the Federal Bureau of Prisons).

**Figure 3**



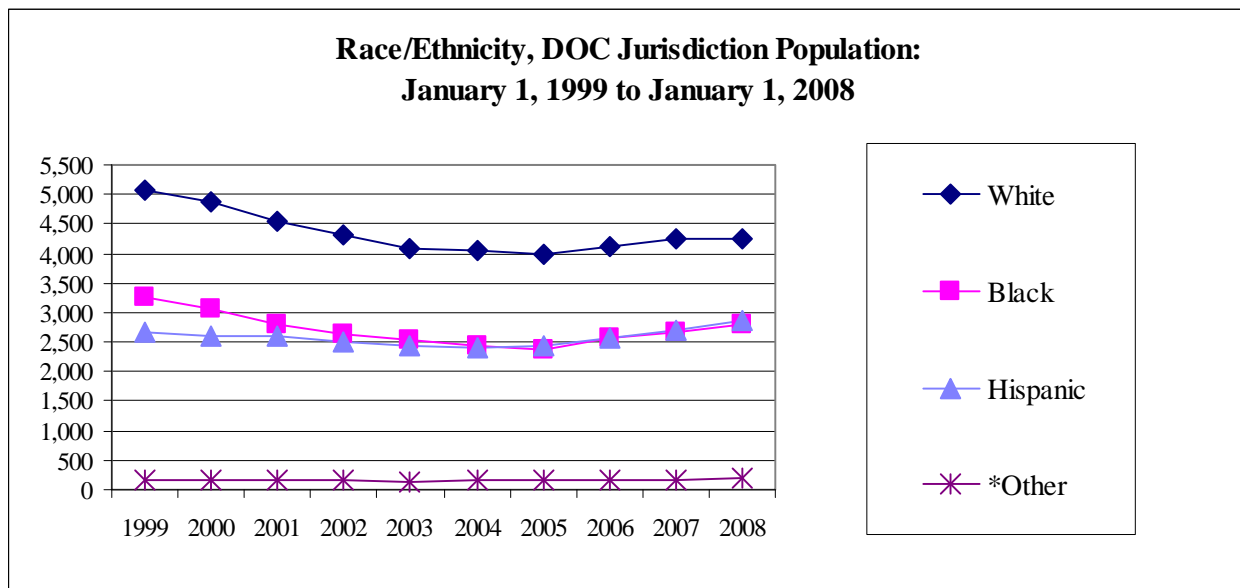
**Table 28**

Race/Ethnicity: January 1, 1999 to January 1, 2008  
DOC Jurisdiction Population

		1999	2000	2001	2002	2003	2004	2005	2006	2007	2008	% Chng 2007 vs 2008	% Chng 1999 vs 2008
White	N	5,081	4,870	4,537	4,313	4,093	4,043	3,991	4,118	4,249	4,252	(0%)	-(16%)
	(%)	(46%)	(45%)	(45%)	(45%)	(44%)	(45%)	(44%)	(44%)	(43%)	(42%)		
Black	N	3,255	3,065	2,811	2,630	2,543	2,449	2,386	2,555	2,665	2,804	(5%)	-(14%)
	(%)	(29%)	(29%)	(28%)	(27%)	(28%)	(27%)	(27%)	(27%)	(27%)	(28%)		
Hispanic	N	2,656	2,617	2,586	2,491	2,443	2,411	2,444	2,568	2,689	2,867	(7%)	(8%)
	(%)	(24%)	(24%)	(26%)	(26%)	(26%)	(27%)	(27%)	(27%)	(28%)	(28%)		
Native American	N	31	33	36	39	46	52	47	46	53	58	(9%)	(87%)
	(%)	(0%)	(0%)	(0%)	(0%)	(0%)	(1%)	(1%)	(0%)	(1%)	(1%)		
Asian	N	135	127	122	110	98	105	104	111	108	116	(7%)	-(14%)
	(%)	(1%)	(1%)	(1%)	(1%)	(1%)	(1%)	(1%)	(1%)	(1%)	(1%)		
Hawaiian/Pacific Islander	N	NA	NA	3	2	0	0	1	0	1	1	NA	NA
	(%)			(0%)	(0%)	(0%)	(0%)	(0%)	(0%)	(0%)	(0%)		
Other	N	NA	NA	NA	25	0	0	6	7	13	34	NA	NA
	(%)				(0%)	(0%)	(0%)	(0%)	(0%)	(0%)	(0%)		
<b>Total</b>		<b>11,158</b>	<b>10,712</b>	<b>10,095</b>	<b>9,610</b>	<b>9,223</b>	<b>9,060</b>	<b>8,979</b>	<b>9,405</b>	<b>9,778</b>	<b>10,132</b>	<b>(4%)</b>	<b>-(9%)</b>

For purposes of the DOC Jurisdiction trend portion of this report, Race has been included in the categories used prior to 2005 in order to show continuing trends in the population.

**Figure 4**



\*Asian, Hawaiian Pacific Islander, Native American and Other races have been added together for this graph.

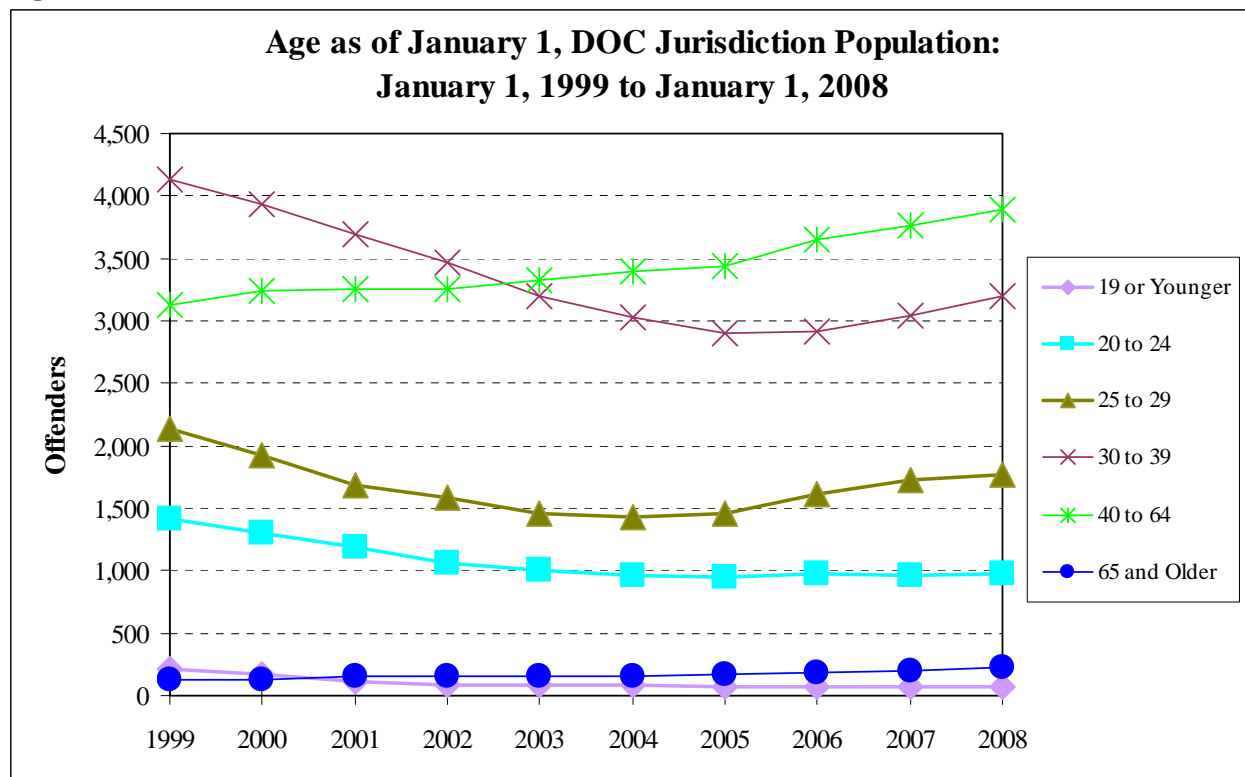
**Table 29**

Age as of January 1: January 1, 1999 to January 1, 2008  
DOC Jurisdiction Population

		1999	2000	2001	2002	2003	2004	2005	2006	2007	2008	% Chng 2007 vs 2008	% Chng 1999 vs 2008
19 or Younger	N	215	169	117	84	82	91	72	70	77	73	-(5%)	-(66%)
	(%)	(2%)	(2%)	(1%)	(1%)	(1%)	(1%)	(1%)	(1%)	(1%)	(1%)		
20 to 24	N	1,420	1,307	1,186	1,059	1,003	968	944	980	966	973	(1%)	-(31%)
	(%)	(13%)	(12%)	(12%)	(11%)	(11%)	(11%)	(11%)	(10%)	(10%)	(10%)		
25 to 29	N	2,135	1,929	1,690	1,589	1,455	1,426	1,462	1,611	1,724	1,765	(2%)	-(17%)
	(%)	(19%)	(18%)	(17%)	(17%)	(16%)	(16%)	(16%)	(17%)	(18%)	(17%)		
30 to 39	N	4,134	3,927	3,693	3,461	3,197	3,025	2,896	2,909	3,038	3,198	(5%)	-(23%)
	(%)	(37%)	(37%)	(37%)	(36%)	(35%)	(33%)	(32%)	(31%)	(31%)	(32%)		
40 to 64	N	3,131	3,247	3,260	3,259	3,325	3,394	3,437	3,652	3,768	3,892	(3%)	(24%)
	(%)	(28%)	(30%)	(32%)	(34%)	(36%)	(37%)	(38%)	(39%)	(39%)	(38%)		
65 and Older	N	123	133	149	155	161	156	168	183	205	231	(13%)	(88%)
	(%)	(1%)	(1%)	(1%)	(2%)	(2%)	(2%)	(2%)	(2%)	(2%)	(2%)		
<b>Total</b>		<b>11,158</b>	<b>10,712</b>	<b>10,095</b>	<b>9,607</b>	<b>9,223</b>	<b>9,060</b>	<b>8,979</b>	<b>9,405</b>	<b>9,778</b>	<b>10,132</b>	<b>(4%)</b>	<b>-(9%)</b>
<b>Median Age (Years)</b>		<b>34</b>	<b>34</b>	<b>35</b>	<b>35</b>	<b>36</b>	<b>36</b>	<b>36</b>	<b>36</b>	<b>36</b>	<b>37</b>		
<b>Mean Age (Years)</b>		<b>35</b>	<b>36</b>	<b>36</b>	<b>37</b>	<b>37</b>	<b>37</b>	<b>38</b>	<b>38</b>	<b>38</b>	<b>38</b>		

For an explanation of Median & Mean age, see Glossary.

**Figure 5**



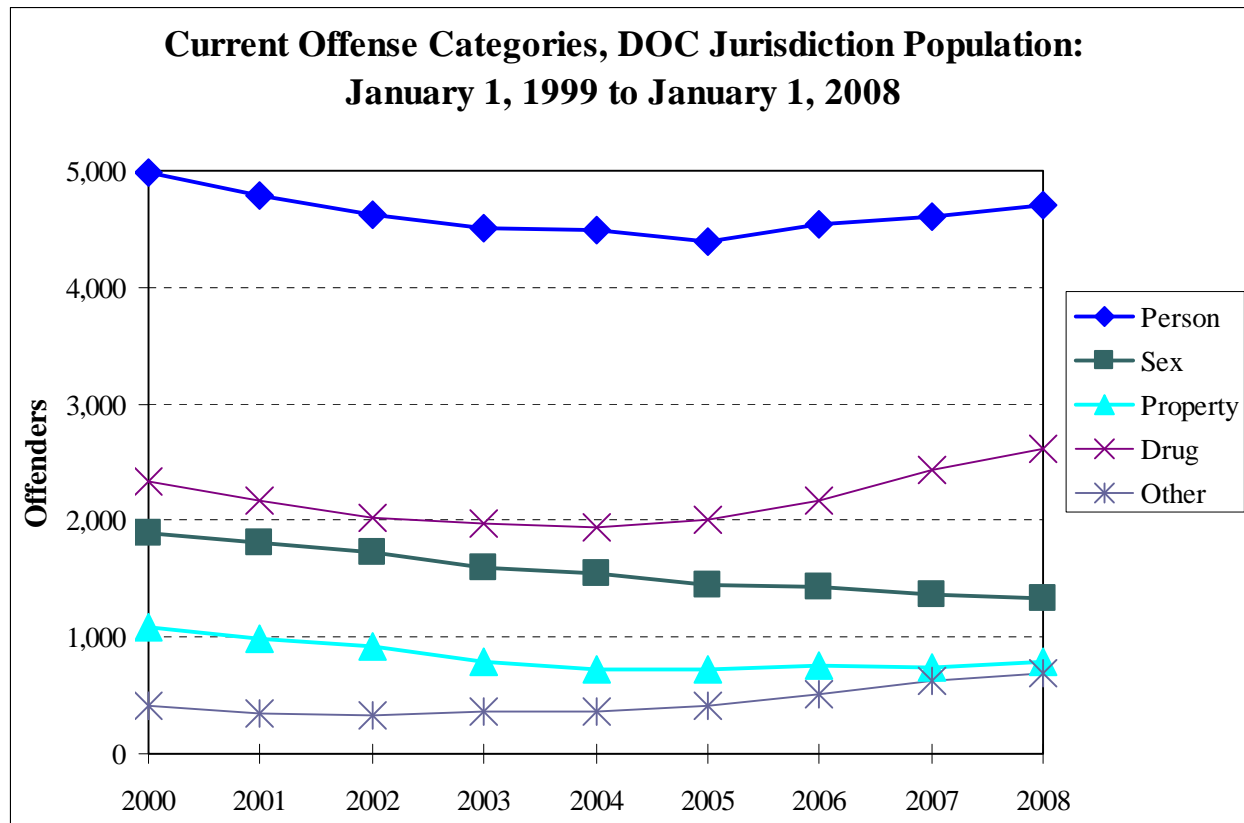
**Table 30**

Current Offense Categories: January 1, 1999 to January 1, 2008  
DOC Jurisdiction Population

		1999	2000	2001	2002	2003	2004	2005	2006	2007	2008	% Chng 2007 vs 2008	% Chng 1999 vs 2008
Person	N	5,141	4,991	4,782	4,622	4,499	4,493	4,388	4,533	4,610	4,704	(2%)	-(9%)
	(%)	(46%)	(47%)	(47%)	(48%)	(49%)	(50%)	(49%)	(48%)	(47%)	(46%)		
Sex	N	1,939	1,893	1,815	1,722	1,599	1,544	1,447	1,432	1,365	1,328	-(3%)	-(32%)
	(%)	(17%)	(18%)	(18%)	(18%)	(17%)	(17%)	(16%)	(15%)	(14%)	(13%)		
Property	N	1,237	1,087	985	914	790	722	727	760	744	791	(6%)	-(36%)
	(%)	(11%)	(10%)	(10%)	(10%)	(9%)	(8%)	(8%)	(8%)	(8%)	(8%)		
Drug	N	2,421	2,328	2,165	2,018	1,975	1,942	2,014	2,174	2,441	2,610	(7%)	(8%)
	(%)	(22%)	(22%)	(21%)	(21%)	(21%)	(21%)	(22%)	(23%)	(25%)	(26%)		
Other	N	420	413	348	334	360	359	403	506	618	699	(13%)	(66%)
	(%)	(4%)	(4%)	(3%)	(3%)	(4%)	(4%)	(4%)	(5%)	(6%)	(7%)		
<b>Total</b>		<b>11,158</b>	<b>10,712</b>	<b>10,095</b>	<b>9,610</b>	<b>9,223</b>	<b>9,060</b>	<b>8,979</b>	<b>9,405</b>	<b>9,778</b>	<b>10,132</b>	<b>(4%)</b>	<b>-(9%)</b>

For a description & explanation of offenses, see Appendix.

**Figure 6**



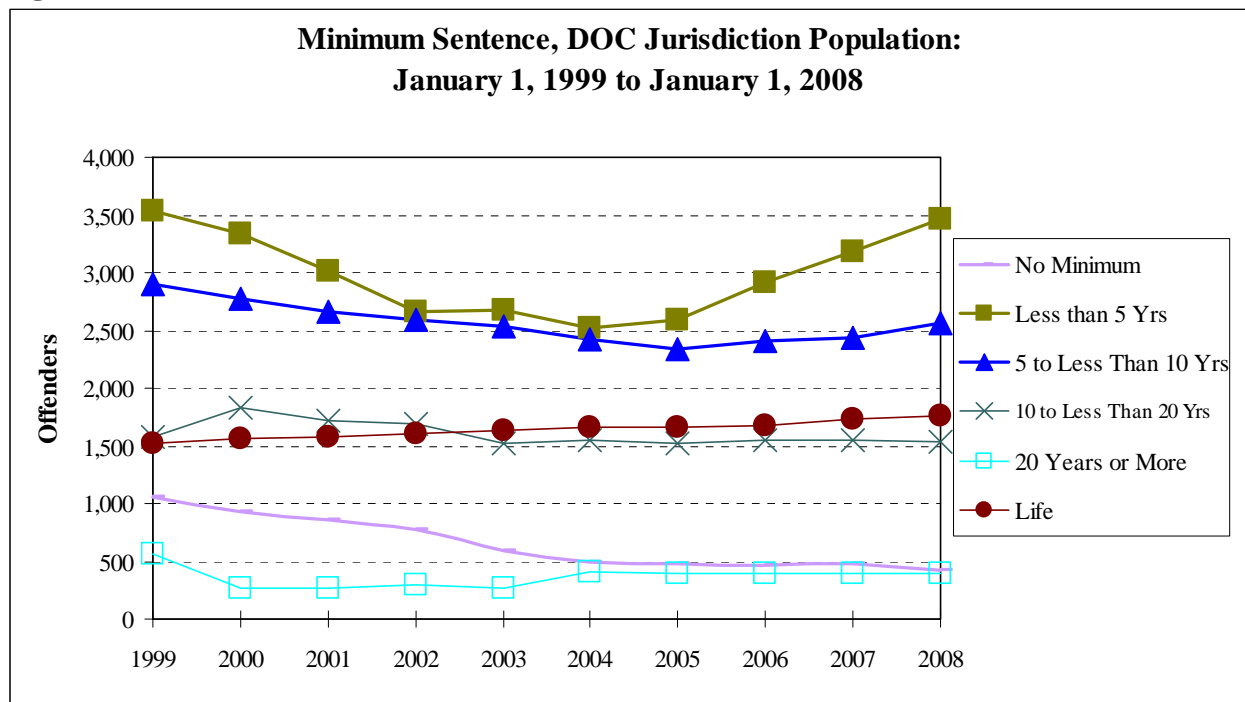
See Glossary, Current Offense.

**Table 31**

Minimum Sentence: January 1, 1999 to January 1, 2008  
DOC Jurisdiction Population

		1999	2000	2001	2002	2003	2004	2005	2006	2007	2008	% Chng 2007 vs 2008	% Chng 1999 vs 2008
Less than 5 Yrs	N	3,531	3,341	3,012	2,656	2,683	2,528	2,592	2,912	3,190	3,458	(8%)	-(2%)
	(%)	(35%)	(34%)	(33%)	(30%)	(31%)	(29%)	(30%)	(33%)	(34%)	(36%)		
5 to Less Than 10 Yr	N	2,901	2,778	2,661	2,597	2,531	2,416	2,335	2,407	2,439	2,558	(5%)	-(12%)
	(%)	(29%)	(28%)	(29%)	(29%)	(29%)	(28%)	(27%)	(27%)	(26%)	(26%)		
10 to Less Than 20 Y	N	1,579	1,837	1,722	1,684	1,523	1,552	1,518	1,553	1,549	1,541	-(1%)	-(2%)
	(%)	(16%)	(19%)	(19%)	(19%)	(18%)	(18%)	(18%)	(17%)	(17%)	(16%)		
20 Years or More	N	570	261	261	294	266	414	400	393	395	395	(0%)	-(31%)
	(%)	(6%)	(3%)	(3%)	(3%)	(3%)	(5%)	(5%)	(4%)	(4%)	(4%)		
Life	N	1,522	1,562	1,582	1,599	1,631	1,661	1,657	1,680	1,730	1,761	(2%)	(16%)
	(%)	(15%)	(16%)	(17%)	(18%)	(19%)	(19%)	(19%)	(19%)	(19%)	(18%)		
<b>Subtotal</b>	<b>N</b>	<b>10,103</b>	<b>9,779</b>	<b>9,238</b>	<b>8,830</b>	<b>8,634</b>	<b>8,571</b>	<b>8,502</b>	<b>8,945</b>	<b>9,303</b>	<b>9,713</b>	<b>(4%)</b>	<b>-(4%)</b>
	<b>(%)</b>	<b>(91%)</b>	<b>(91%)</b>	<b>(92%)</b>	<b>(92%)</b>	<b>(94%)</b>	<b>(95%)</b>	<b>(95%)</b>	<b>(95%)</b>	<b>(95%)</b>	<b>(96%)</b>		
No Minimum	N	1,055	933	857	780	589	489	477	460	475	419	-(12%)	-(60%)
	(%)	(9%)	(9%)	(8%)	(8%)	(6%)	(5%)	(5%)	(5%)	(5%)	(4%)		
<b>Total</b>		<b>11,158</b>	<b>10,712</b>	<b>10,095</b>	<b>9,610</b>	<b>9,223</b>	<b>9,060</b>	<b>8,979</b>	<b>9,405</b>	<b>9,778</b>	<b>10,132</b>	<b>(4%)</b>	<b>-(9%)</b>

**Figure 7**

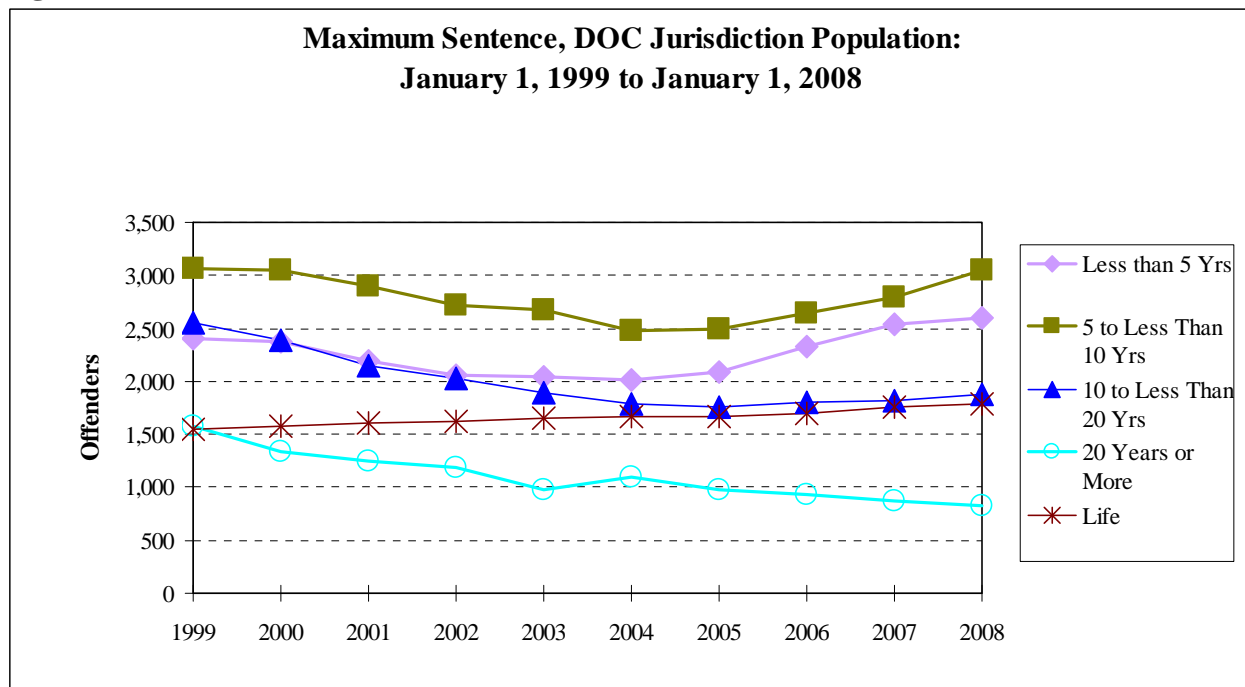


**Table 32**

Maximum Sentence: January 1, 1999 to January 1, 2008  
DOC Jurisdiction Population

		1999	2000	2001	2002	2003	2004	2005	2006	2007	2008	% Chng 2007 vs 2008	% Chng 1999 vs 2008
Less than 5 Yrs	N	2,408	2,370	2,193	2,065	2,039	2,016	2,094	2,331	2,533	2,597	(3%)	(8%)
	(%)	(22%)	(22%)	(22%)	(21%)	(22%)	(22%)	(23%)	(25%)	(26%)	(26%)		
5 to Less Than 10 Yr	N	3,070	3,048	2,904	2,715	2,676	2,486	2,491	2,646	2,797	3,043	(9%)	-(1%)
	(%)	(28%)	(28%)	(29%)	(28%)	(29%)	(27%)	(28%)	(28%)	(29%)	(30%)		
10 to Less Than 20 Yr	N	2,559	2,381	2,151	2,024	1,886	1,789	1,755	1,808	1,819	1,877	(3%)	-(27%)
	(%)	(23%)	(22%)	(21%)	(21%)	(20%)	(20%)	(20%)	(19%)	(19%)	(19%)		
20 Years or More	N	1,579	1,333	1,247	1,188	975	1,096	974	927	874	830	-(5%)	-(47%)
	(%)	(14%)	(12%)	(12%)	(12%)	(11%)	(12%)	(11%)	(10%)	(9%)	(8%)		
Life	N	1,542	1,580	1,600	1,618	1,647	1,673	1,665	1,693	1,755	1,785	(2%)	(16%)
	(%)	(14%)	(15%)	(16%)	(17%)	(18%)	(18%)	(19%)	(18%)	(18%)	(18%)		
<b>Total</b>		<b>11,158</b>	<b>10,712</b>	<b>10,095</b>	<b>9,610</b>	<b>9,223</b>	<b>9,060</b>	<b>8,979</b>	<b>9,405</b>	<b>9,778</b>	<b>10,132</b>	<b>(4%)</b>	<b>-(9%)</b>

**Figure 8**

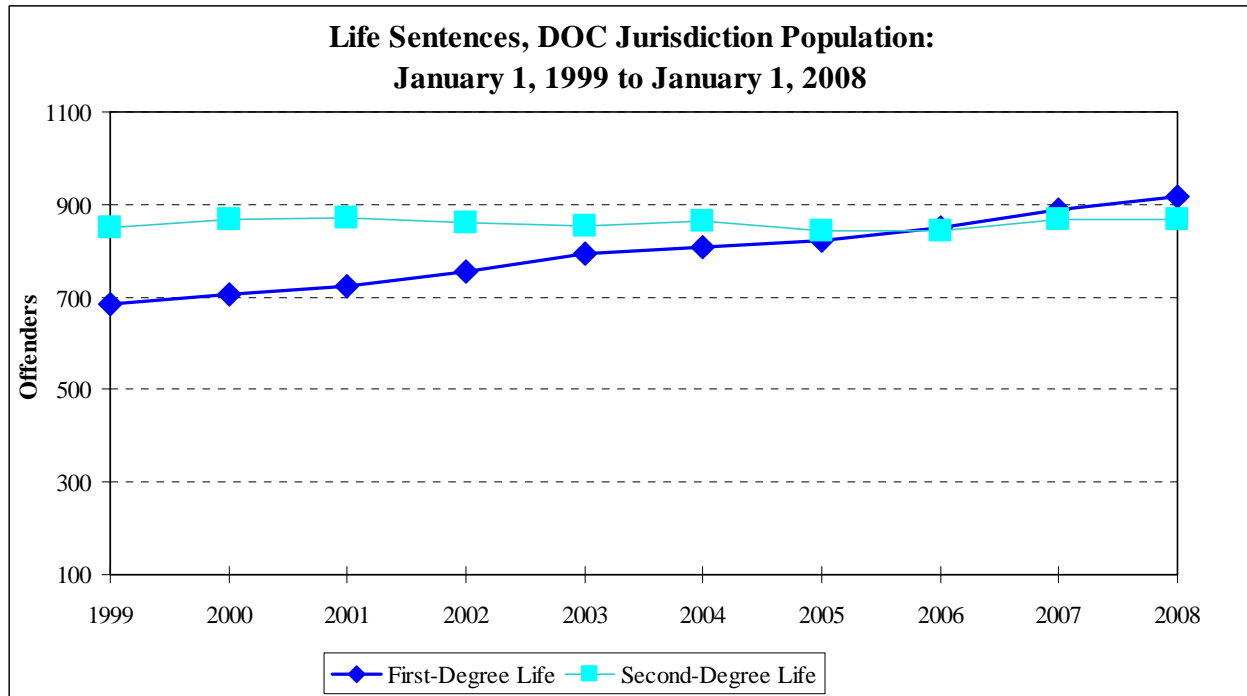


**Table 33**

Life Sentences: January 1, 1999 to January 1, 2008  
DOC Jurisdiction Population

		1999	2000	2001	2002	2003	2004	2005	2006	2007	2008	% Chng 2007 vs 2008	% Chng 1999 vs 2008
First-Degree Life	N	683	706	723	756	793	808	823	851	889	917	(3%)	(34%)
	(%)	(45%)	(45%)	(45%)	(47%)	(48%)	(48%)	(49%)	(50%)	(51%)	(51%)		
Second-Degree Life	N	850	867	871	862	854	865	842	842	866	868	(0%)	(2%)
	(%)	(55%)	(55%)	(55%)	(53%)	(52%)	(52%)	(51%)	(50%)	(49%)	(49%)		
<b>Total</b>		<b>1,533</b>	<b>1,573</b>	<b>1,594</b>	<b>1,618</b>	<b>1,647</b>	<b>1,673</b>	<b>1,665</b>	<b>1,693</b>	<b>1,755</b>	<b>1,785</b>	<b>(2%)</b>	<b>(16%)</b>

**Figure 9**



<h2>GLOSSARY</h2>
-------------------



**Age at Commitment for Present Offense**

Jail credits are not considered when calculating the age at commitment for present offense.

**Citizenship**

The following is a list of cultures grouped into the “Other” category (each separately represent <2% of the total population): Algerian (1), Antigua & Barbuda (1), Angola (1), Barbados (6), Belize (1), Bolivia (1), Burma (1), Canada (5), China (5), Cayman Islands (1), Ethiopia (1), Ecuadorian (2), Egypt (1), Greece (1), Germany (4), Ghana (1), Guinea (1), Guyana (4), Honduras (12), Ireland (1), India (2), Israel (1), Italy (3), Kenya (2), South Korea (2), Lebanon (1), Laos (11), Mexico (14), Moroccan (3), Netherlands(Holland) (1), Nigeria (4), Palau, Republic of (1), Philippines (2), Panama (1), Poland (3), Peru (2), Russia (9), Saint Lucia (2), Sierre Leone (1), SW Africa (1), Sudan (2), Thailand (8), Nevis & St. Christopher “Kitts” (1), Trinidad (9), Uganda (2), Ukraine (2), United Kingdom (8), British Virgin Islands (1) and Venezuela (4).

**Court from Which Committed**

Boston Municipal Court is included with the District Court category, as well as other former Municipal courts; District courts are lower courts of all counties.

**Culture**

Inmates report their culture at time of commitment. Cultures that are reported by 25 inmates or less are included in the “Other” category. They are: Afghan (4), Algerian (2), Angolan (1), Azorean (1), Arab (2), Armenian (1), Barbadian (6), Bolivian (1), Brazilian (12), Cuban (25), Canadian (4), Chinese (7), Croatian (1), Czech (1), Dominica (4), Dutch (2), Eastern European (1), Egyptian (2), El Salvadorian (22), English (24), Ethiopian (1) Finnish (5), French Canadian (5), German (10), Greek (5), Guamanian (1), Guatemalan (10), Honduran (10), Indian (14), Jordanian (2), Korean (2), Laotian (9), Latino (4), Lithuanian (1), Lebanese (6), Mexican (12), Moroccan (2), Nigerian (2), Philippine (1), Pakistani (1), Panamanian (2), Peruvian (2), Polish (23), Russian (11), Rumanian (1), Scottish (6), Swedish (5), Thai (7), Trinidadian (7), Turkish (1), Ugandan (1), Ukranian (2), Venezuelan (2), West Indian (7), Yugoslavian (1), Zimbabwean (1) and Other (9).

**Current Offense**

Inmates may be incarcerated for multiple offenses. The offense reported is that associated with the longest maximum discharge date.

Offense labels can be found in the Appendix and are listed in alphabetical order by offense category.

**DOC**

Massachusetts Department of Correction

<b>Expiration</b>	Expiration of Sentence
<b>GCD</b>	Good Conduct Discharge
<b>HOC</b>	House of Correction – Massachusetts
<b>Marital Status</b>	The categories “Common Law”, “Cohabitant”, and “Life Partner” are combined into the category labeled “Partner/Live-in” for this report. “Never Married” is combined into the “Single” category.
<b>Mean</b>	Sum of the values of all the observations in a data set divided by the number of observations, typically referred to as the “average”.
<b>Median</b>	The point in an array of data which has an equal number of observations above and below it.
<b>Minimum Sentence</b>	Some inmates do not have a minimum sentence, only a maximum sentence. Cases with “No Minimum” term are inmates serving House of Correction (County) or Reformatory sentences and can also be those serving out of state or federal sentences.
<b>Not Reported</b>	For self-reported variables such as marital status, education, race, place of birth, and address missing information is noted as “Not Reported”.
<b>Place of Birth</b>	The category “Outside United States/Territories” combines 47 countries reported by inmates as their place of birth.
<b>Primary Language</b>	The following primary languages are combined into the “Other” category (number of cases is provided in parenthesis): Arabic (1), Cape Verdean (2), German (1), Greek (1), Farsi (1), Italian (1), Korean (2), Polish (1), Serb (3) and Thai (5), Turkish (1).
<b>Race/Ethnicity</b>	The Race categories in Table 2 include inmates who reported their ethnicity as Hispanic. Statistics regarding Hispanic ethnic status are reported in Table 3. This is the sixth year the expanded race definition implemented by the U.S. Office of Management and Budget Statistical Policy is incorporated in the Department of Correction’s annual report. To maintain consistency with past definitions, the trend tables report “Hispanic” as a race/ethnicity category.
<b>Religion</b>	Religions representing less than one percent of the commitments are combined into categories of “Other” or “Other Christian”. The “Other” category consists of the following religions with the associated number of

cases in parenthesis: Atheist (66), Hare Krishna (1), Hindu (3), Native American (87), Quaker (6), Rastafarian (47), Russian Orthodox (4), Scientologist (2), Wiccan (82) and Other (39). The “Other Christian” category consists of the following: Born Again Christian (109), Christian Scientist (49), Congregationalist (4), Episcopalian (14), Greek Orthodox (17), Jehovah Witness (82), Lutheran (11), Methodist (26), Mormon (12), Presbyterian (9), Seventh Day Adventist (30), and Unitarian (3). Blank and missing information is labeled as “Not Reported”.

## **Sentence/Sentence Type**

### **State Prison Sentence**

Prior to the “Truth in Sentencing” law, if an offender is sentenced to the State Prison, except for life or as a habitual criminal, the court shall not fix the term of imprisonment, but shall fix a maximum and minimum term for which he/she may be imprisoned. The minimum term shall not be less than two and a half years. All sentences that have a finite maximum term are eligible to have the term reduced by statutory good time, except for most sex offenses, crimes committed while confined and certain “mandatory” sentences.

In the “new law”, all state sentences have a minimum and a maximum term, unless an inmate is sentenced for life or as a habitual criminal. The minimum term is used to determine parole eligibility, and the maximum term is used to determine discharge.

Under both the “old” and “new” sentencing systems, an inmate is discharged from his/her sentence at the expiration of his term, less any statutory or earned good time. Under the “new” system none of the reduction will be attributable to statutory good time.

### **Reformatory Sentence**

Prior to the “Truth in Sentencing” law, males and females can be sentenced to a Reformatory sentence, an indefinite term, indicated by a maximum term.

For MCI- Concord, a male not previously sentenced for a felony more than three times, convicted of a crime punishable by imprisonment in any correctional institution of the Commonwealth or by imprisonment in a jail or House of Correction may be sentenced for an indefinite term. Concord may confine misdemeanor offenders as well as those who commit felonies.

The “new” law eliminates “Concord” (or Framingham) sentences to the state reformatory.

A female convicted of a crime punishable by imprisonment in a House of Correction, may be sentenced to the Massachusetts Correctional Institution-Framingham. In addition to those women who commit

felonies, MCI-Framingham may confine female misdemeanor offenders.

House of Correction Sentence

Also known as a “County Sentence”. Prior to the “Truth in Sentencing” law, if an offender is sentenced to the House of Correction, the term shall be two and a half years or less. Parole eligibility and discharge are based on the maximum term of a sentence. Under the “new” law, discharge on this sentence will change because of the elimination of statutory good time. There is no change in the parole eligibility date.

Other State, Federal

This category is used for inmates who were received by the DOC from another state correctional agency or the Federal Bureau of Prisons and are not sentenced under Massachusetts General Law.

**Truth in Sentencing Indicator**

On January 12, 1994, the Governor signed into law an Act to Promote the Effective Management of the Criminal Justice System. St. 1993, c. 432, generally known as the “Truth in Sentencing” Law. Sentencing for offenses committed after June 30, 1994 are significantly affected by this law. This field indicates whether the “Current Offense” was committed prior to or after June 30, 1994. For further discussion on “Truth in Sentencing” refer to “Sentence/Sentence Type” earlier in Glossary.

**Violent Offense**

Any offense that falls under the Person or Sex Offense categories.

<b>APPENDIX</b>
-----------------

Offenses are listed in alphabetical order by category. If more than one offense is combined into the same label or an offense label was shortened to fit in the report table, the offense is listed in this Appendix. Abbreviated offense labels are printed in **bold** letters. Arithmetic signs have been used to abbreviate where relevant and represent the following: > (greater than), < (less than), + (and over).

**Drug Offense**

Massachusetts General Law Chapter 94C Offenses

Class A Distribution or Possession w/Intent to Distribute

**Class A: Manufacturing, Distribution, Dispensing or Possession with Intent to Manufacture, Distribute or Dispense** (no mandatory minimum term)

Class A Distribution or Possession w/Intent to Dist, Subsequent

**Class A: Subsequent Offense Manufacturing, Distribution, Dispensing or Possession with Intent to Manufacture, Distribute or Dispense** (mandatory minimum term specified)

Class A Distribution or Poss w/Int to Dist to Minor

**Class A: Manufacturing, Distribution, Dispensing or Possession with Intent to Manufacture, Distribute, Dispense to a Minor** (mandatory minimum term specified)

Class B Distribution or Possession w/Intent to Distribute

**Class B: Manufacturing, Distribution, Dispensing or Possession with Intent to Manufacture, Distribute, Dispense** (no mandatory minimum term)

Class B Distribution or Possession w/Intent to Dist, Subsequent

**Class B: Subsequent Offense, Manufacturing, Distribution, Dispensing or Possession with Intent to Manufacture, Distribute or Dispense** (mandatory minimum term specified)

Class B Distribution or Poss w/Int to Dist to Minor

**Class B: Manufacturing, Distribution, Dispensing or Possession with Intent to Manufacture, Distribute, Dispense to a Minor** (mandatory minimum term specified)

Class C Distribution or Possession w/Int to Distribute

**Class C: Manufacturing, Distribution, Dispensing or Possession with Intent to Manufacture, Distribute, Dispense** (no mandatory minimum term)

Class C Distribution or Poss w/Int to Dist, Subsequent

**Class C: Subsequent Offense, Manufacturing, Distribution, Dispensing or Possession with Intent to Manufacture, Distribute or Dispense** (mandatory minimum term specified)

Class C Distribution or Poss w/Int to Dist to Minor	<b>Class C: Manufacturing, Distribution, Dispensing or Possession with Intent to Manufacture, Distribute, Dispense to a Minor</b> (mandatory minimum term specified)
Class D Distribution or Possession w/Intent to Distribute	<b>Class D: Manufacturing, Distribution, Dispensing or Possession with Intent to Manufacture, Distribute or Dispense</b> (no mandatory minimum term)
Class D Distribution or Poss w/Int to Dist, Subsequent	<b>Class D: Subsequent Offense, Manufacturing, Distribution, Dispensing or Possession with Intent to Manufacture, Distribute or Dispense</b> (no mandatory minimum term)
Counterfeit Drugs, Distribution or Possession	<b>Counterfeit Drugs, Manufacturing, Distribution, Dispensing or Possession with Intent to Manufacture, Distribute, Dispense</b>
Distribute/Sell Drug Paraphernalia	Distribute or possess drug paraphernalia with intent to sell; sell drug paraphernalia
Drug Violation School/Park	Drug violation near a school or park
Fraudulent Prescriptions	Includes uttering false prescriptions and subsequent offenses; drugs obtained by fraud
Induce Minors in Sale and Distribution of Drugs	<b>Induce Minors in Sales and Distribution of Drugs.</b> Includes drug funds, induce minors to possess, induce minors to distribute
Unlawful Possession of Particular Controlled Substance	<b>Unlawful Possession of Particular Controlled Substances Including Heroin and Marijuana.</b> The following are the controlled substance categories:
Class A	Heroin and morphine;
Class B	Cocaine; opium, amphetamines, barbiturates, and PCP;
Class C	Hallucinogens (LSD, hashish);
Class D	Marijuana;
Class E	Prescription drugs;
No Class Specified	Type of drug is not indicated by the sentence
Possession of Hypodermic Syringe/Instrument	Includes possession of hypodermic needle or any instrument adapted for the administration of narcotic drugs; hypodermic violation

Possession w/Int to Distribute Cocaine to Minor	<b>Cocaine Distribution or Possession with Intent to Distribute to a Minor</b> (mandatory minimum term)
Specific CL B Distribution or Possession w/Intent to Distribute	<b>Specific Class B: Manufacturing, Dispensing or Possession with Intent to Manufacture, Distribute, Dispense</b> (mandatory minimum term specified). Specific Class B drugs are Cocaine and Phenmetrazine
Specific CL B Distribution or Possession w/ Int to Dist, Subsequent	<b>Specific Class B: Subsequent Offense Manufacturing, Distribution, Dispensing or Possession with Intent to Manufacture, Distribute, Dispense</b> (mandatory minimum term specified). Specific Class B drugs are Cocaine and Phenmetrazine Methamphetamin
Specific Class B Trafficking	Trafficking categories are broken out by amount. Specific Class B drugs are Cocaine and Phenmetrazine
<b><u>Other Offense</u></b>	Miscellaneous offenses that are not clearly categorized into one of the other offense categories of Person, Property, Sex or Drug
Bribery/Corruption	Includes corrupt gifts/offers to influence; bribery; corrupt gifts/offers to influence acts; solicitation of gifts; corruption; financial interest of state employees; giving or receiving gifts; fiduciary; threatening economic injury
Cruelty to Animals	Includes rabies vaccination penalty; killing or injury to domestic animals; cruelty to animals; willfully injuring police dogs or horses
Delivering/Receiving Articles for Inmates	Includes delivering drugs to prisoners; inmates bringing drugs/weapons into facilities
Deriving Support from Prostitution	Includes keeping and maintaining house of prostitution or house of ill fame; deriving support from a prostitute (pimping); procuring a person to practice prostitution
Domestic Abuse Prevention	Includes orders to vacate marital home and orders of restraint; domestic abuse prevention Environmental Offenses. Includes discharge of pollutants into waters; illegal dumping; illegal taking of shellfish; violation of wetlands protection act
Escape	Includes attempts, aiding an escape, accessory to escape, escapes from work, education, program release activity, prison camp, jail, DOC or HOC, work release



False Alarm of Fire/Removal of Fire Devices	<b>False Alarm of Fire/Removal of Fire Protective Devices.</b> Includes tampering with fire protection device; false alarm of fire
Gaming	Includes organizing gambling syndicates, place for registering bets, illegal lottery
Habitual Criminal	Sentence if no punishment is provided by statute; punishment of habitual criminal
Leave the Scene of Vehicular Accident	Motor vehicle accident, personal injury, damage
Miscellaneous Other Offense	Includes violation of a civil ordinance, inhaling toxic vapors; tax evasion, threatening tax collector, unlicensed accountant, contributing to the delinquency of a minor, unauthorized practice of law, home improvement contractor violation/unlicensed, disturbing correctional institutions, procuring miscarriage, dies in consequence of miscarriage; disinterring bodies
Non-Support or Abandonment of Child	Infant abandonment and death from abandonment; abandonment and non-support; the illegal refusal to support a child
Obstruction of Justice	Includes obstruction of justice; compounding or concealing felonies; false report of crime to police officer, false report to state agency, obstruction of justice, interfere with firefighter
Other Decency/Public Peace Crimes	Includes promoting of anarchy, inciting a riot; annoying telephone calls, common night walker, brawlers, disorderly acts, indecent exposure, lewd, wanton and lascivious behavior, idle and disorderly; threat to commit a crime; recognizance to keep the peace; affray, threats, disturbing of peace in presence of justice
Other Motor Vehicle Offenses	Does not include vehicular homicide, OUI, OUI with injury, or leaving the scene. Includes violation of Automobile Law, violation of Motor Vehicle Law; failure to yield right away to emergency vehicles; operating unregistered; operating after suspension; operating motor vehicle after suspension or revocation of license (this includes operating after revocation, habitual offender, illegally attaching plates, operating after suspension); OUI after revocation/suspension for prior OUI, using motor vehicle without authority, leaving scene after motor vehicle homicide; viol of Ignition Device Restriction, refusal to submit to police officer; leasing motor vehicle on mileage basis fraud violation; operating motor vehicle without liability policy, bond.

Other Weapons Offense	Includes shooting across highway near dwelling; sale of ammunition, firearm license violation - purchase for use of another; weapons stored or kept by owner, throwing or shooting of missiles; use of a firearm during commission of a felony; possession of infernal machine; possession of a hoax device, carrying dangerous weapon first or subsequent; sale of silencers for firearms, knife, dagger, etc. with prior felony; tear gas use in commission of crime; possession of machine or shot guns; use of body armor in commission of crime; quantity of firearms; firearms sales, distribution or transfer; selling firearm without registering of serial number; possess firearm without ID; carrying a firearm while under the influence; possession of firearm on school grounds; possession of large capacity weapon without firearm identification; possession of defaced firearm in a felony; defacing a firearm, discharge of firearm within 500 feet of a dwelling; possession of explosives or other dangerous substances; weapons violation with prior; False report Explosive/Dangerous substance; Threaten use of F/A, Explos or Hijacking; Make threat causing Evacuation
OUI, Alcohol or Drugs, With or Without Injury	<b>Operating a Motor Vehicle Under the Influence of Alcohol or Drugs With or Without Injury.</b> Includes operating under the influence; operating under the influence with injury resulting
Perjury/Contempt of Court	Includes contempt; perjury; attempt to procure another to commit perjury; disruption of court proceedings; perjury, statements alleging motor vehicle thefts; penalties for violation of confidentiality and for perjury; failure to appear; contempt of court.
Prostitution	Includes soliciting for prostitute; prostitution; engaging in sex for a fee
Sale/Possession of Alcohol to Minor < 21	<b>Sale or Possession of Alcohol to Minor Under 21.</b> Includes sale, delivery or furnishing alcoholic beverages to persons under 21, employment of persons under 18 persons under 21 purchase or attempt to purchase; open container
Violation of Labor Laws	Includes illegal payment of wages; frivolous proceedings, costs; failure to provide payment/compensation
Weapons Violation, Bartley-Fox Gun Law	Carrying a firearm without a license (mandatory 1 year sentence)
<b><u>Person Offense</u></b>	Crimes Against the Person (primarily Massachusetts General Law Chapter 265 offenses)

Accessory Before the Fact	Includes aiders, accessory before the fact; prosecution as accessory before the fact
Armed Assault in Dwelling Houses	Includes armed assault in dwelling houses. The act may be an actual assault or an attempt.
Assault to Rob not Being Armed	Includes assault to rob not being armed, assault to rob, assault with intent to rob, assault with intent to rob by force and violence
Assault with Intent to Commit Felony	Includes assault with intent to commit felony, injury to firefighter, assault with intent to intimidate, assault and battery for intimidation with bodily injury, causing injury during physical training
Assault with Intent to Commit Murder	Includes assault with intent to murder, maim, etc.; assault to commit murder; assault with intent to kill
Assault with Intent to Rob or Murder, Being Armed	Includes assault with intent to rob or murder being armed; assault with a deadly weapon with intent to rob
Assault/Assault and Battery	Includes assault, assault and battery, assault and battery on an officer, E.M.T. or a public servant, assault and battery to collect loan, assault and battery on children under 18 to join criminal conspiracy including gangs or organizations that collectively engage in criminal activity
Assault/A&B with a Dangerous Weapon	<b>Assault/assault and Battery with a Dangerous Weapon.</b> Includes assault and battery with a dangerous weapon; assault with a dangerous weapon; assault by means of a hypodermic needle; assault and battery by means of a hypodermic needle
Attempted Murder	Includes all attempts to commit murder, other than assaults: attempted murder, attempts to commit murder by poisoning, drowning, or strangling, poisoning with intent to kill/injure
A&B Upon an Elderly or Disabled Person	<b>Assault and Battery on an Elderly or Disabled Person.</b> Includes assault and Battery upon elderly or disabled causing injury, serious injury, permanent bodily injury
A&B with a Dangerous Weapon, Victim 60+	<b>Assault and Battery with a Dangerous Weapon,</b> Includes assault and battery by means of a dangerous weapon, victim 60 or older
Conspiracy	If crime is specified, (i.e., conspiracy to commit larceny), the offense is listed under the specified crime.

	If crime is not specified, the offense is listed under this category
Extortion	Includes attempts to extort money, threats, threat to commit crime
Kidnapping	Includes abduction, holding a correction officer hostage, kidnapping with intent to extort, kidnapping of minor by relative
Manslaughter	Includes negligent homicide, voluntary or involuntary manslaughter. Manslaughter while operating a MV OUI
Stalking	Includes stalking in violation of a restraining order (1st offense), stalking as a subsequent offense, harassing or making threats pattern of criminal harassment
Stealing by Confining or Putting in Fear	<b>Confining or Putting in Fear a Person for the Purpose of Stealing.</b> Includes breaking, burning or blowing up a safe; intimidate to steal from a depository
Unarmed Robbery	Includes robbery, robbery not being armed, robbery by force and violence
Violation of Civil Rights	Includes civil rights violation, civil rights violation with bodily injury, violation of civil rights with injury
<b><u>Property Offense</u></b>	Crimes Against Property (primarily Massachusetts General Law Chapter 266 offenses)
Arson and Attempted Arson	Includes burning or aiding to burn a dwelling, other buildings, personal property; attempting to burn building; injury or destruction of woods by fire; injury due to negligent use of fire; negligent use of fire in towns; burning insured property with intent to defraud; injury to fire engines; destruction or injury by explosives; throwing explosives at property or persons; use or possession of flammable liquid in breakable container
Burglary, Armed or an Assault	Includes armed burglary, breaking and entering with intent to assault with or without dangerous weapon
Destruction of Property	Includes injury or destruction of electrical utility property, boundary markings, historical monuments, schoolhouse or church, building, personal property; defacement or injury of county building; throwing oil of vitriol; destroying timber; breaking glass or injury to fences; defacement of property with paint; injury to religious, educational, etc., institutions; destruction of property by inmate at correctional institution;

	destruction of property by prisoners; damaging irrigation machinery; destruction or alteration of motor vehicle identification numbers; alteration of identifying numbers
Embezzlement	Includes bank officers, fraud or embezzlement; embezzlement by brokers/agents; fiduciaries fraud; defraud company's assets
Forgery and Uttering	Includes forgery or alteration of lottery tickets; stealing, forging or falsifying; making false certificate of title, learning permits, licenses, registration or inspection stickers; obtaining signature under false pretenses; unlawful use of credit cards; publishing code of non-existing credit cards; false/forged records, certificates, returns; railroad tickets, passes or badges, injures, defrauds, falsely makes, alters, forges or counterfeits; uttering false records; possession of 10 or more counterfeit bills; uttering false instrument; possession of false/forged counterfeit bills, tools/materials to make counterfeit notes
Fraud	Includes obtaining criminal info under false pretenses, false representation; securities violations; unauthorized practice of medicine; provider making false representations; Defrauding hotel, fraudulently procuring food, fraud of telecommunication service; fraudulent use of telecommunication; false health claims, obtaining goods by fraud; wills: destruction or concealment, stolen trade secrets; buying or selling, stock, fraudulent issue or transfer; corporation, books false entries with intent to defraud; presentation of false claims; obtaining goods under false pretenses; false invoice of cargo, intent to defraud insurer; insurance policy, penalty/fraud claims; sale of a motor vehicle with an altered ID number, interception of wire and oral communications
Larceny From Elder or Disabled Person	Includes larceny from person 65 or older; larceny from person 60 or older, or disabled
Larceny/Stealing	Includes stealing in building, vessel or railroad car, stealing in a truck, tractor/semi-trailer or freight container; larceny - general provision and penalties; larceny by check; unlawful taking of money by transporter; larceny of bicycle; concealing leased or rented property
Receiving Stolen Goods	Includes receiving and buying stolen goods; common receiver of stolen goods (habitual)
Shoplifting	Includes shoplifting as a third offense

Theft of Motor Vehicle or non-Motor Vehicle	Removal of motor vehicle with intent to defraud insurer; theft of motor vehicle or trailer; concealment of motor vehicle or trailer thief; unlawful taking or use of transportation media
Unarmed Burglary/Breaking and Entering	Includes unarmed breaking and entering in night time; breaking and entering a building, vessel or vehicle in night time with intent to commit a misdemeanor or felony, entering by daytime or breaking and entering by night time a building, vehicle or vessel with intent to commit a felony; entering dwelling in night time or breaking and entering in a building, vehicle or vessel in daytime with intent to commit a felony; breaking and entering or entering railroad car with intent to commit a felony; breaking and entering trucks, tractors or trailers.
<b><u>Sex Offense</u></b>	Sex Offenses Against the Person. Consist of Massachusetts General Law Chapter 265 (Crimes Against the Person) and Chapter 272 offenses (Crimes Against Chastity, Morality, Decency and Good Order).
Assault With Intent to Commit Rape	Includes attempts to rape
Assault with Intent to Rape, Child < 16	<b>Assault with Intent to Commit Rape, Child Under 16 Years</b>
Crimes Against Nature	The abominable and detestable crime against nature, either with mankind or beast
Indecent Asslt & Battery on Child Under 14	<b>Indecent Assault and Battery on Child Under 14</b> Includes indecent assault and battery on a minor
Indecent A&B on Mentally Retarded Victim	<b>Indecent Assault and Battery on Mentally Retarded Victim</b>
Indecent Asslt & Battery on Victim 14 or Older	<b>Indecent Assault and Battery on Victim 14 or Older</b>
Other Sex Offenses	Includes adultery, fornication, open and gross lewdness and lascivious behavior, drugging persons for unlawful intercourse, dissemination of obscene matter
Rape	Age of victim not specified, or does not fall under a rape of child category
Rape and Abuse of a Child	Statutory rape, victim under 16 years old
Rape of a Child with Force	Rape of a Child with Force
Sex Offenses Involving a Minor	Includes the enticement of a child under the age of 16, the reckless behavior creating a risk of serious bodily injury or sexual abuse to a person under 18, enticing person under 16 away for marriage, inducing person

under 18 to have sexual intercourse, inducing a minor into prostitution, prostitutes deriving support from a child, distribution of obscene articles to minors, child pornography, dissemination of materials of child in state of nudity, dissemination of visual materials of child engaged in sexual conduct, knowingly purchasing or possession of visual material of child depicted in sexual conduct.

Sexual Assault - Out of State/Federal Inmates

Used for sexual assault cases for out-of-state or federally sentenced inmates whose offense does not fit in another sex offense category

Unnatural Acts

Includes unnatural acts, lascivious acts, assault to commit unnatural sex acts