

# **MASSACHUSETTS DEPARTMENT OF CORRECTION**

## **Quarterly Report on Admissions and Releases in the Massachusetts Department of Correction**

### **First Quarter 2020**





**Commonwealth of Massachusetts**

Charles D. Baker, Governor

**Executive Office of Public Safety and Security**

Thomas A. Turco III, Secretary

**Massachusetts Department of Correction**

Carol A. Mici, Commissioner  
Jennifer A. Gaffney, Deputy Commissioner

Rhiana Kohl, Ph.D., Executive Director of Strategic Planning & Research

For questions regarding this report, please contact the Research & Planning Division:

Research & Planning Division  
MCI-Concord/SFU Building  
P.O. Box 9125  
Concord, MA 01742  
Phone: (978) 405-6677  
Fax: (978) 405-6680  
[Research@massmail.state.ma.us](mailto:Research@massmail.state.ma.us)

**This and other Massachusetts Department of Correction publications can be accessed on the internet at:**

<https://www.mass.gov/research-statistics-and-reports>

Publication No. 20-219-DOC-01. 16 pgs. August 2020.  
Authorized by: Gary Lambert, Assistant Secretary for Operational Services.

## Table of Contents

<b>Executive Summary</b>	.....	p.2
<b>Section 1. Current Population and Overall Trends</b>		
1.1	Average Quarterly Custody and Jurisdiction Population.....	p.3
1.2	Average Quarterly Jurisdiction Population by Commitment Type .....	p.4
1.3	Overall Quarterly Admissions and Releases.....	p.4
1.4	Total Quarterly Admissions by Gender .....	p.5
1.5	Total Quarterly Releases by Gender .....	p.5
1.6	Male Quarterly Admissions and Releases .....	p.6
1.7	Female Quarterly Admissions and Releases .....	p.6
<b>Section 2. Criminally Sentenced Admissions and Releases</b>		
2.1	Overall Quarterly Criminal Admissions and Releases.....	p.7
2.2	Criminally Sentenced Admissions and Releases by Gender .....	p.7
2.3	Male Quarterly Criminal Admissions by Admission Type .....	p.8
2.4	Female Quarterly Criminal Admissions by Admission Type.....	p.9
2.5	Male Quarterly Criminal Releases by Release Type.....	p.9
2.6	Female Quarterly Criminal Releases by Release Type .....	p.10
2.7	State Criminally Sentenced New Court Commitments by Jurisdiction.....	p.11
<b>Section 3. Civilly Committed Admissions and Releases</b>		
3.1	Overall Quarterly Civil Admissions and Releases .....	p.12
3.2	Quarterly Civil Admissions and Releases by Gender.....	p.12
<b>Section 4. Pre-Trial Admissions and Releases</b>		
4.1	Overall Quarterly Pre-Trial Admissions and Releases.....	p.13
4.2	Quarterly Pre-Trial Admissions and Releases by Gender.....	p.13
4.3	Male Quarterly Pre-Trial Admissions by Jurisdiction.....	p.14
4.4	Female Quarterly Pre-Trial Admissions by Jurisdiction.....	p.14
<b>Appendix</b>	.....	p.15

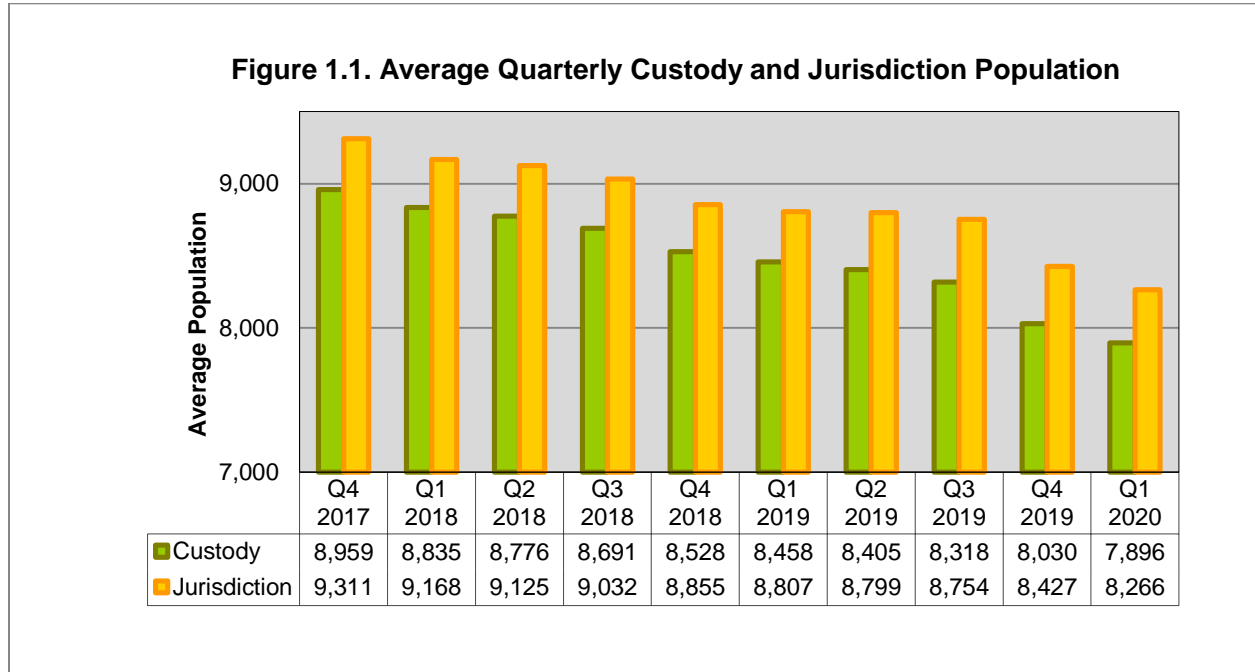
## EXECUTIVE SUMMARY

- The MA DOC custody population averaged 7,896 inmates, and the jurisdiction population averaged 8,266 inmates in the first quarter of 2020. Once again, pre-trial, criminal and civil populations were lower than the previous quarter.
- Both admissions and releases fell from the previous quarter. The drop in admissions is due to females only. Releases saw a dramatic drop of 28.5 percent, coming from both males and females but also primarily due to female releases. These changes align with a dramatic drop in admissions at the end of 2019.
- Criminally sentenced admissions (438) were once again fewer than releases (486) in the first quarter of 2020, though both experienced a decrease. These patterns were reflected in both males and females, though male admissions hardly changed. Parole violation admissions were up sharply in females relative to other admission types.
- Criminally sentenced new court commitments from Massachusetts court (345) grew slightly, with the most commitments sent from Essex county.
- Releases from civil commitment were higher than admissions this quarter, even though admissions grew by 3.7 percent while releases went down by 6.9 percent. Compared to the first quarters of 2019 and 2018, there is a slightly wider gap between admissions and releases. For the ten-quarter trend period, the MA DOC has released 19 more civil commitments than it has admitted.
- The pre-trial population experienced more major decline this quarter as more and more females went into county facilities. Female releases came down by half and admissions decreased by two-thirds. Male pre-trial admissions did also decline, and releases were up slightly. When broken out by county, females from Middlesex made up 97.6 percent of DOC pre-trial detainees. Essex, Norfolk and Plymouth county pre-trial females dropped off drastically.
- The year 2020 is poised to be one of further decline as well as uncertainty with respect to admissions and releases, and if the MA DOC population will level off at historic lows.

**CURRENT POPULATION AND OVERALL TRENDS**

The MA DOC **custody** population averaged 7,896 inmates in the first quarter of 2020. This population decreased by 1.7 percent from the previous quarter. From the fourth quarter of 2017 through the first quarter of 2020, there was a decrease of 1,063 inmates, or just shy of 12 percent, from the custody population.

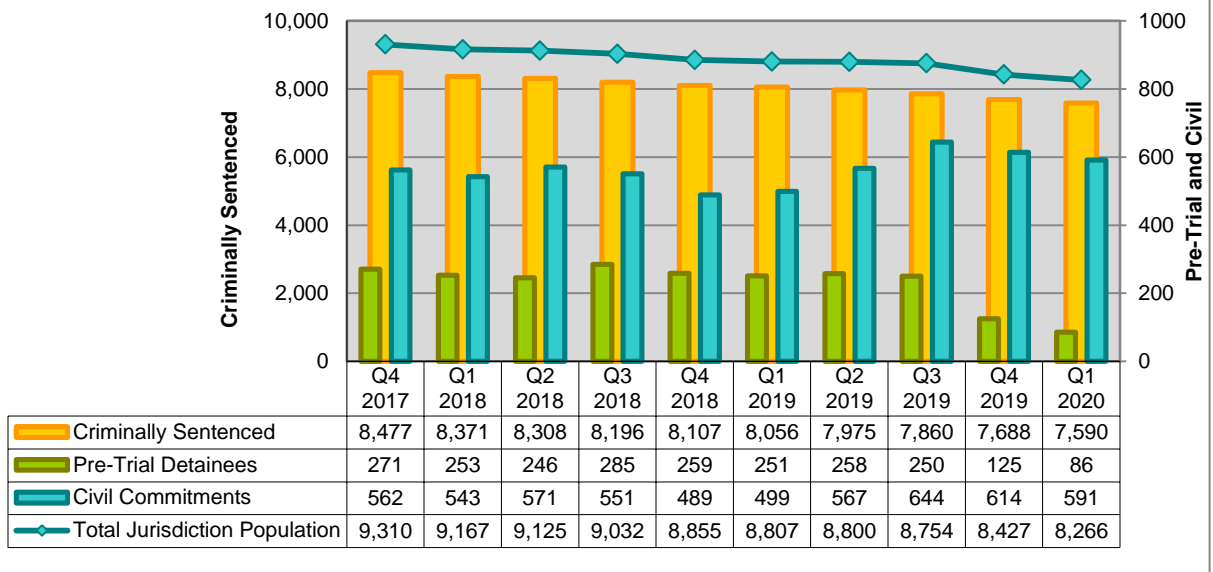
The **jurisdiction** population averaged 8,266 inmates in the first quarter of 2020, dropping 1.9 percent the previous quarter. Over the ten-quarter trend period, the **jurisdiction** population is down 1,045 inmates or 11.2 percent. The decline continues in a consistent manner for both the MA DOC custody and jurisdiction population. See Figure 1.1 below.



The criminally sentenced population dropped 1.3 percent from last quarter and 10.4 percent since the beginning of the trend period. Civil commitment population dropped to below 600 this quarter. The MA DOC pre-trial population shrank again this quarter, by 31.2 percent from the previous quarter. The average pre-trial population for the quarter was below 100. See Figure 1.2 below.

\* Each quarter's population is the average of the last day of the month's count for the three months within that quarter.

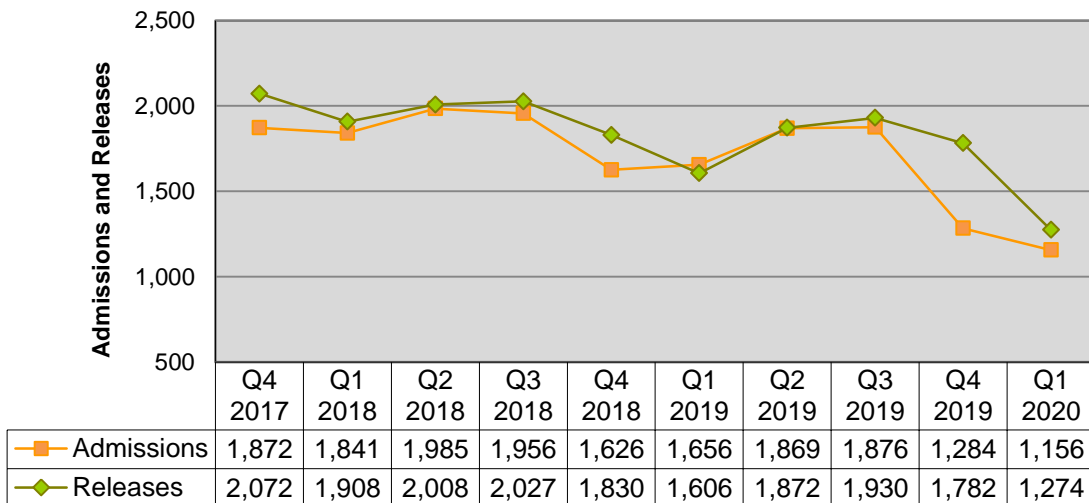
**Figure 1.2. Average Quarterly Jurisdiction Population by Commitment Type**

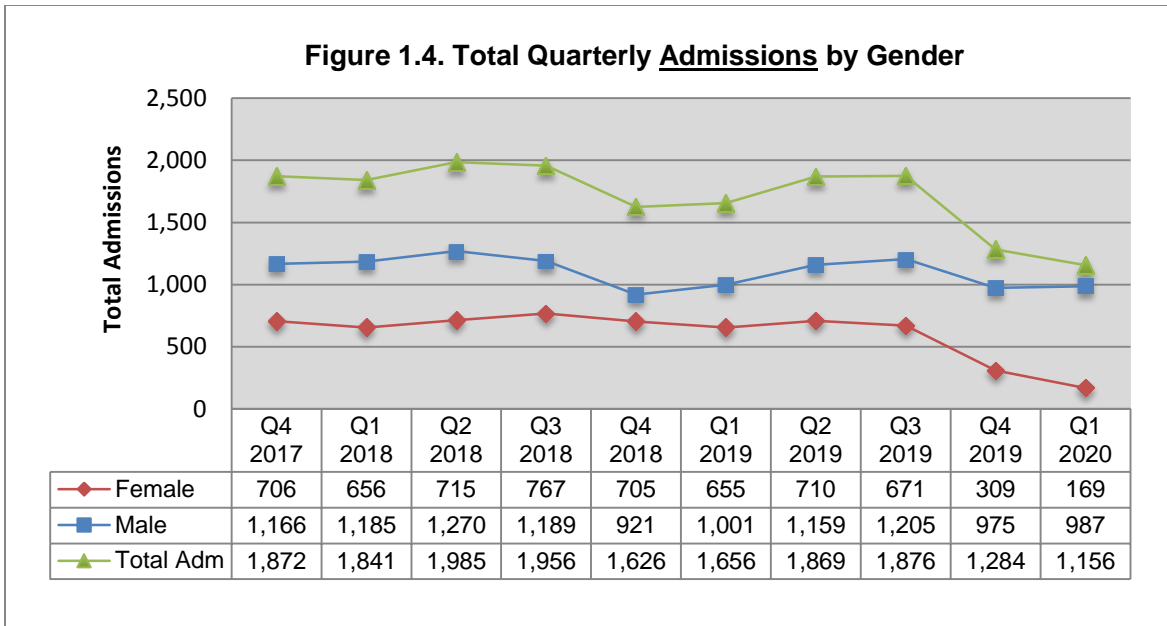


**OVERALL ADMISSIONS AND RELEASES**

Both admissions and releases fell from the previous quarter. Releases saw a dramatic drop of 28.5 percent. This change aligns with a dramatic drop in admissions at the end of 2019. Between Q4 2017 and Q1 2020, the MA DOC released 1,188 more inmates than it has admitted. See Figure 1.3 below.

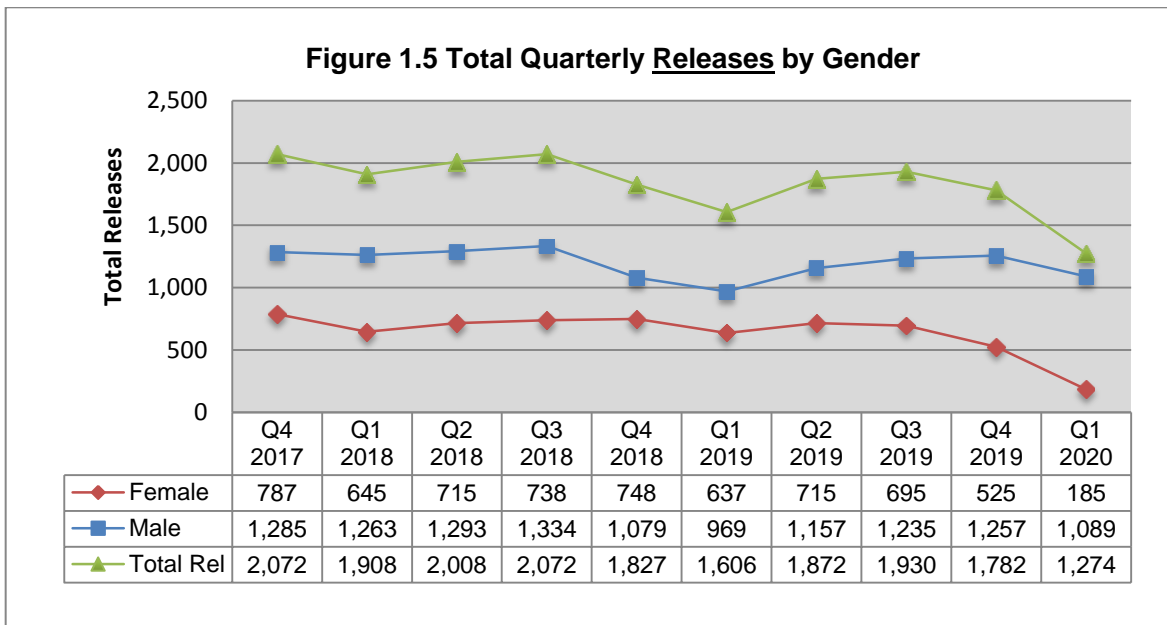
**Figure 1.3. Overall Quarterly Admissions and Releases**

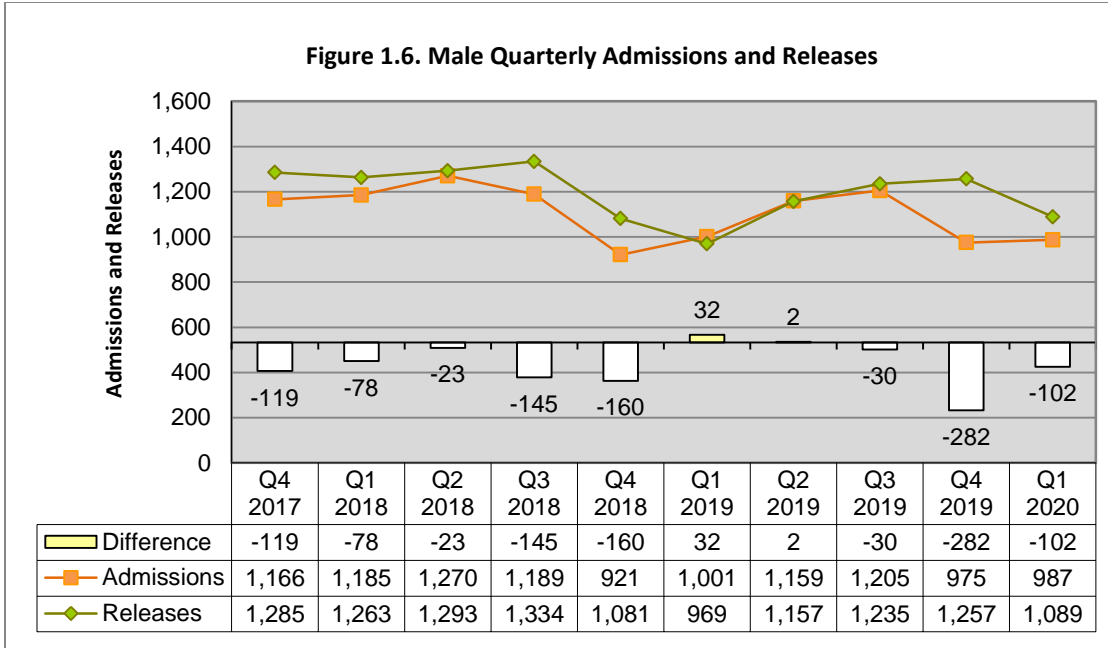




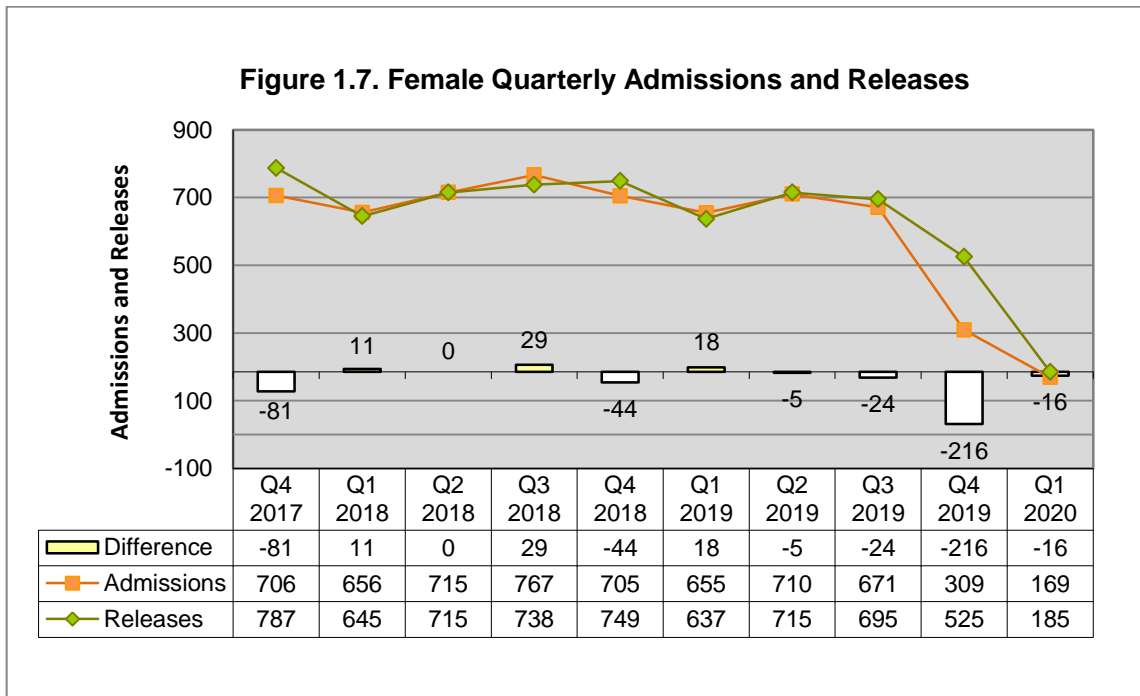
The decline in **admissions** is due to females; male admissions were up 1.2 percent. The female DOC population has seen two consecutive quarters of considerable decline. See Figure 1.4 above.

All **releases** for the trend period are shown in Figure 1.5 below. This quarter, male and female releases were down, but females once again saw a tremendous decline by 64.8 percent. This level of female admissions and releases is likely a new normal.





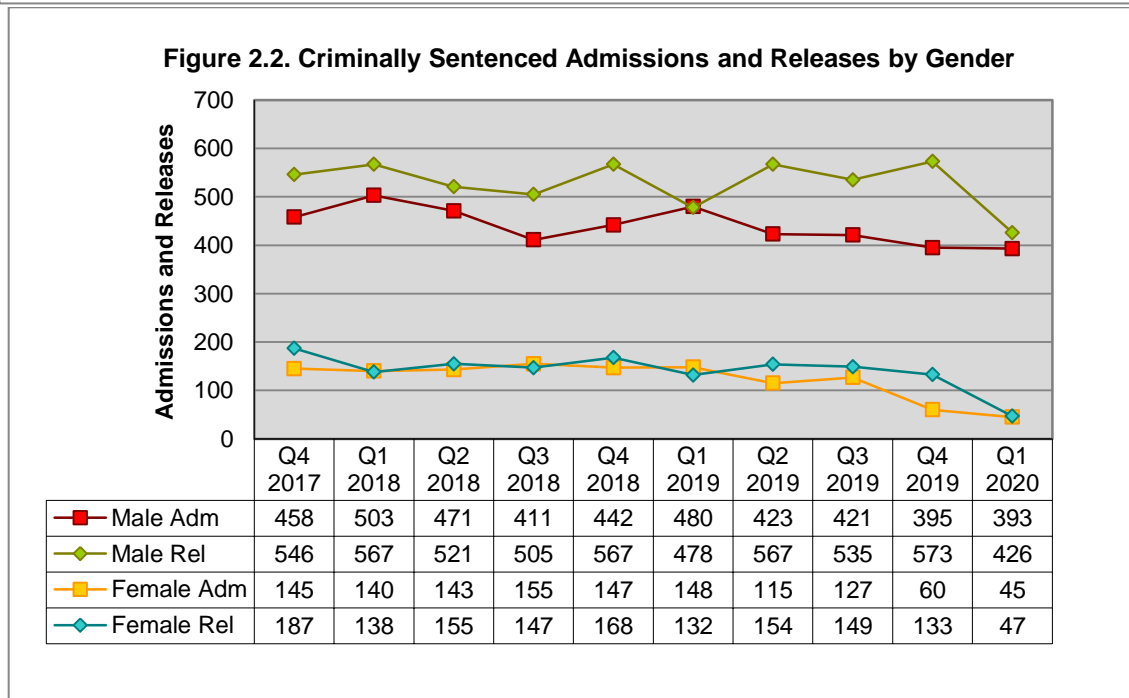
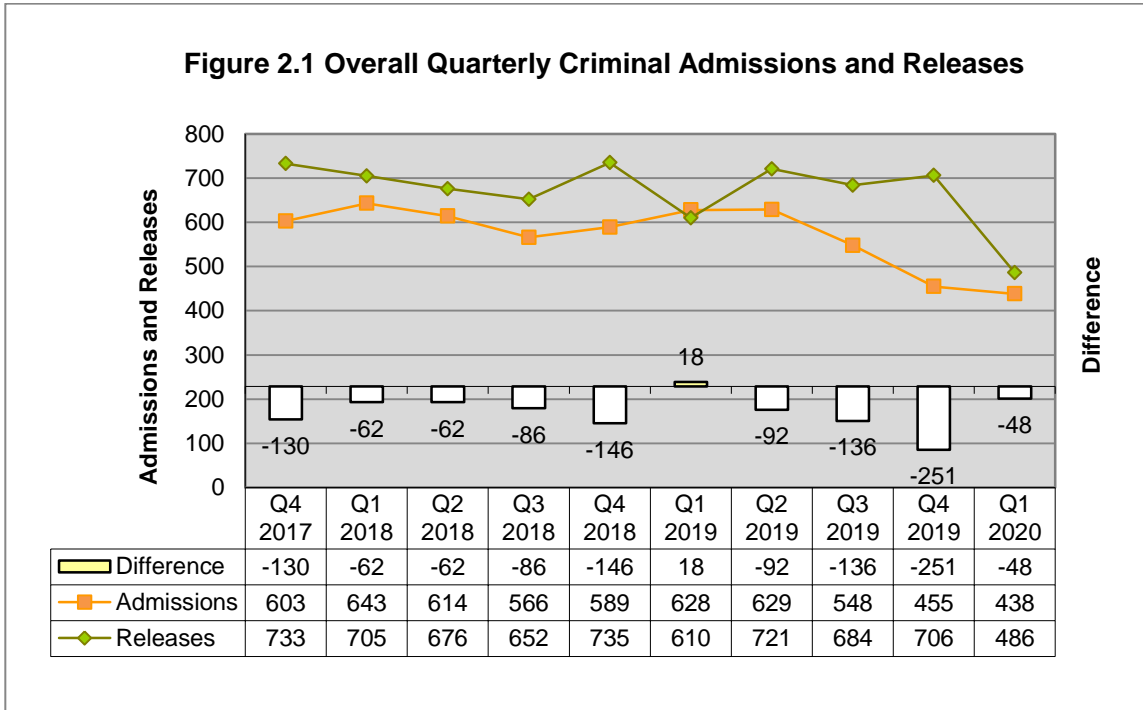
Male releases in Q1 2020 are slightly ahead of admissions (see Figure 1.6 above). Female admissions and releases showed a similar gap (see Figure 1.7 below).





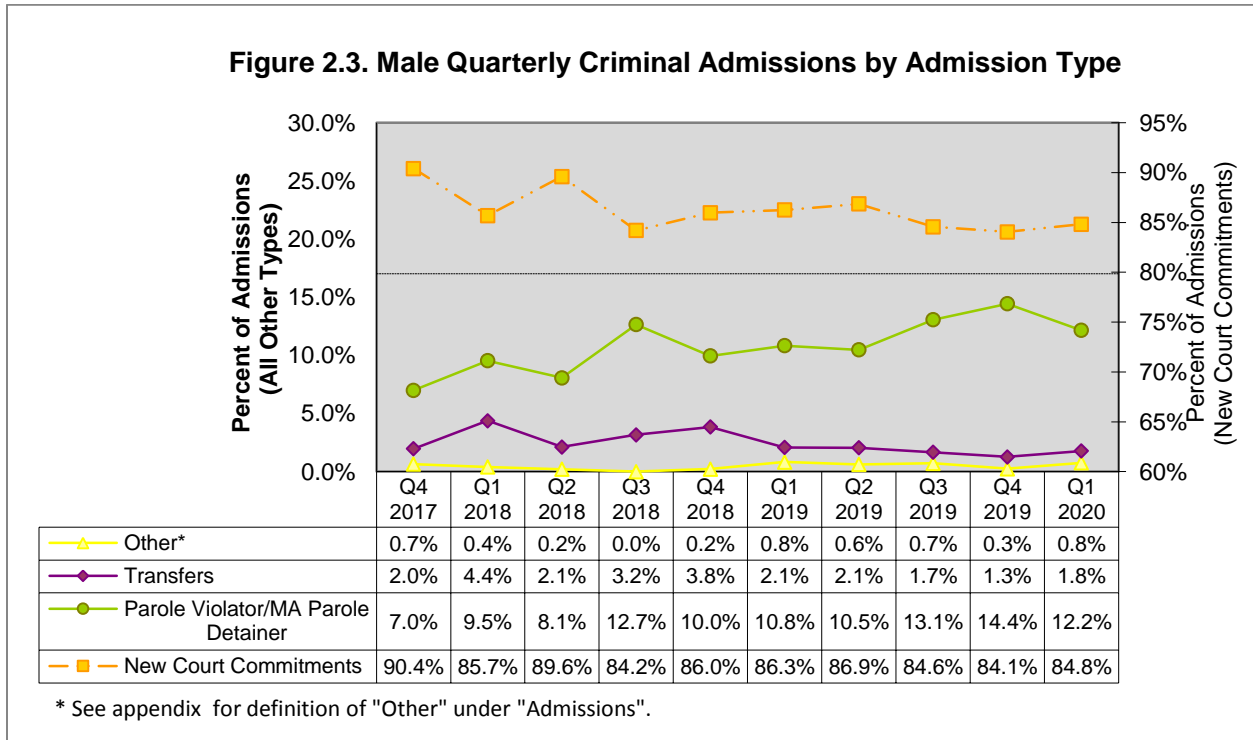
## CRIMINALLY SENTENCED ADMISSIONS AND RELEASES

Criminal releases were slightly greater than criminal admissions during Q1 2020 (Figure 2.1). Releases of the criminally sentenced have dropped dramatically to meet the recent low levels of admissions. This is apparent in both male and female releases (see Figure 2.2).



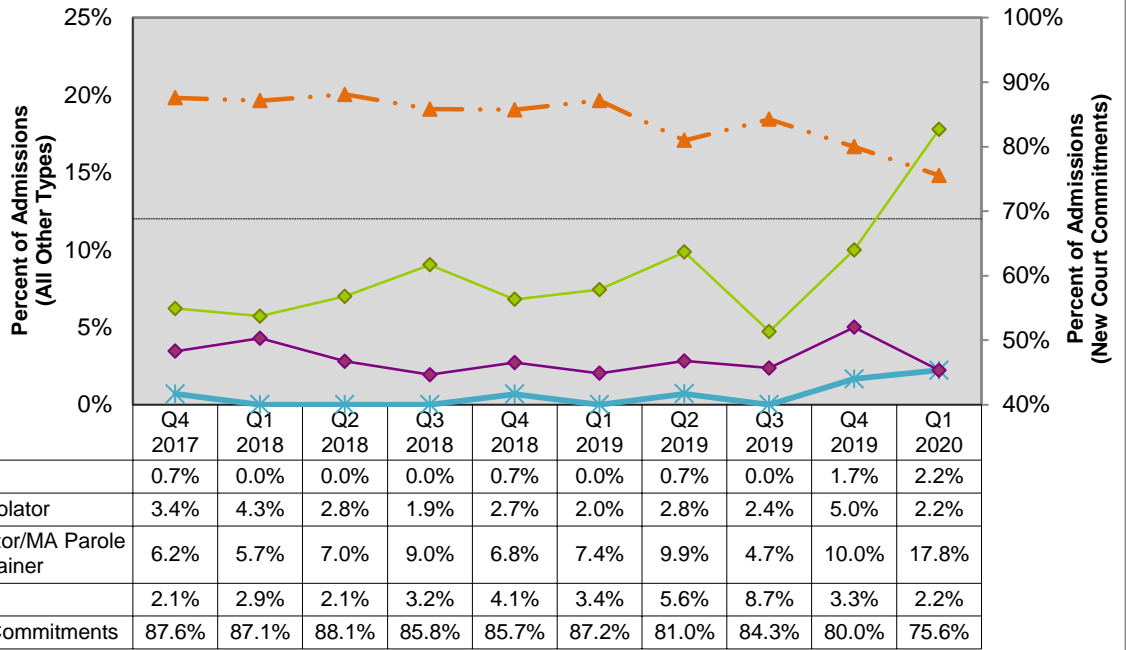
Male admissions remain below 400 and releases have dropped well below 500. Female admissions are down 25 percent from the previous quarter (see Figure 2.2 above).

Figure 2.3 below shows little change in the relative proportions of male admission types, although male parole violator admissions are going back down after two 'up' quarters.



Female new court commitments have dropped again to just 75.6 percent of criminal admissions for the quarter. Probation violator and transfer admissions also dropped, while parole violator admissions picked up dramatically at 17.8 percent of all female criminal admissions.

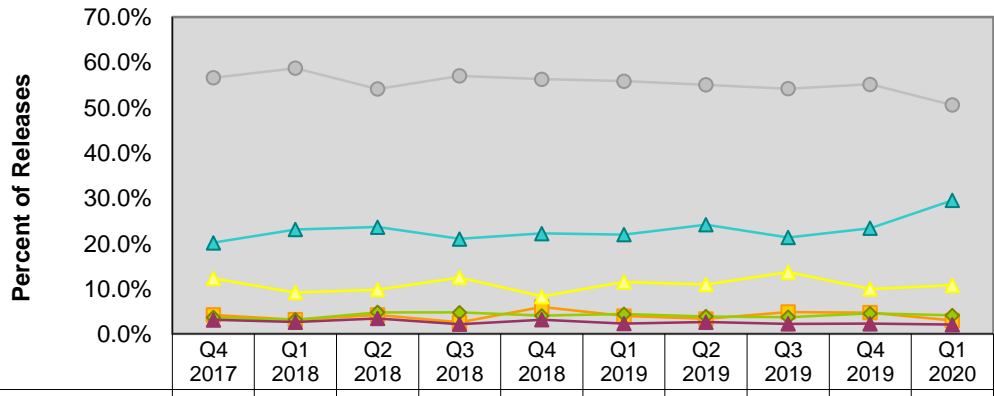
**Figure 2.4. Female Quarterly Criminal Admissions by Admission Type**



\* See appendix for definition of "Other" under "Admissions".

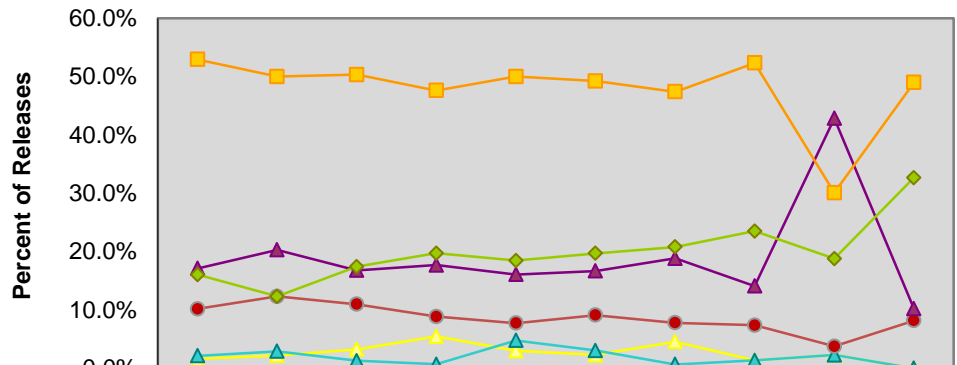
In the first quarter of 2020, paroles to the community are up for both male and female criminal releases. Males returning to the community via expiration of sentence are down to just 50.6 percent of all releases (see Figure 2.5 below).

**Figure 2.5. Male Quarterly Criminal Releases by Release Type**



\* See Appendix for definition of "Other" under "Releases".

**Figure 2.6. Female Quarterly Criminal Releases by Release Type**



	Q4 2017	Q1 2018	Q2 2018	Q3 2018	Q4 2018	Q1 2019	Q2 2019	Q3 2019	Q4 2019	Q1 2020
Expiration/Parole to Outside Authority	1.6%	2.2%	3.2%	5.4%	3.0%	2.3%	4.5%	1.3%	2.3%	0.0%
Other*	2.1%	2.9%	1.3%	0.7%	4.8%	3.0%	0.6%	1.3%	2.3%	0.0%
Expiration/Parole to Warrant	10.2%	12.3%	11.0%	8.8%	7.7%	9.1%	7.8%	7.4%	3.8%	8.2%
Transfers	17.1%	20.3%	16.8%	17.7%	16.1%	16.7%	18.8%	14.1%	42.9%	10.2%
Parole to Comm./Rel. from Parole Detainer	16.0%	12.3%	17.4%	19.7%	18.5%	19.7%	20.8%	23.5%	18.8%	32.7%
Expiration of Sentence to Community	52.9%	50.0%	50.3%	47.6%	50.0%	49.2%	47.4%	52.3%	30.1%	49.0%

\* See Appendix for definition of "Other" under "Releases".

**New Court Commitments by Court Jurisdiction**

Criminally sentenced new court commitments from Massachusetts court jurisdictions were up just slightly this quarter but remain below 350. Changes were mixed, though Hampden County sent 51.9 percent more to the DOC than last quarter, and Plymouth County commitments returned to mid-twenties levels.

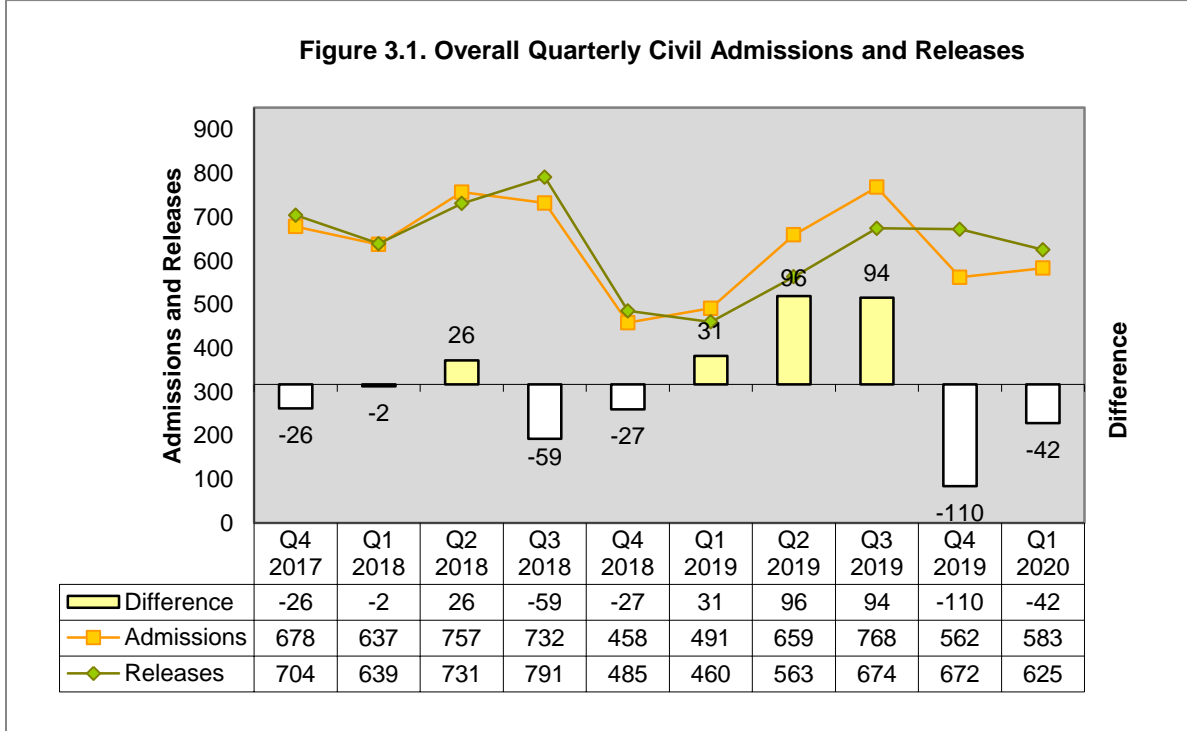
**Table 2.7. State\* Criminally Sentenced New Court Commitments by Court Jurisdiction**

County	Q4 2017	Q1 2018	Q2 2018	Q3 2018	Q4 2018	Q1 2019	Q2 2019	Q3 2019	Q4 2019	Q1 2020
ESSEX	76	64	60	73	78	77	92	61	64	57
SUFFOLK	77	83	84	72	76	70	90	64	48	52
BRISTOL	49	47	76	28	44	77	56	37	46	47
WORCESTER	35	43	43	38	21	38	34	49	34	43
HAMPDEN	60	63	43	30	37	42	46	32	27	41
MIDDLESEX	55	56	48	55	53	53	45	37	42	38
PLYMOUTH	30	25	23	14	28	26	29	28	40	27
BARNSTABLE	11	15	11	8	6	10	8	16	15	10
NORFOLK	20	21	22	24	22	19	19	17	11	13
BERKSHIRE	8	8	6	6	4	7	5	13	8	8
FRANKLIN	1	4	8	6	8	6	4	5	3	5
HAMPSHIRE	3	8	8	5	7	6	4	5	2	4
NANTUCKET	0	0	0	0	0	0	0	0	0	0
DUKES	1	0	1	0	0	0	1	0	0	0
Total	426	437	433	359	384	431	433	364	340	345

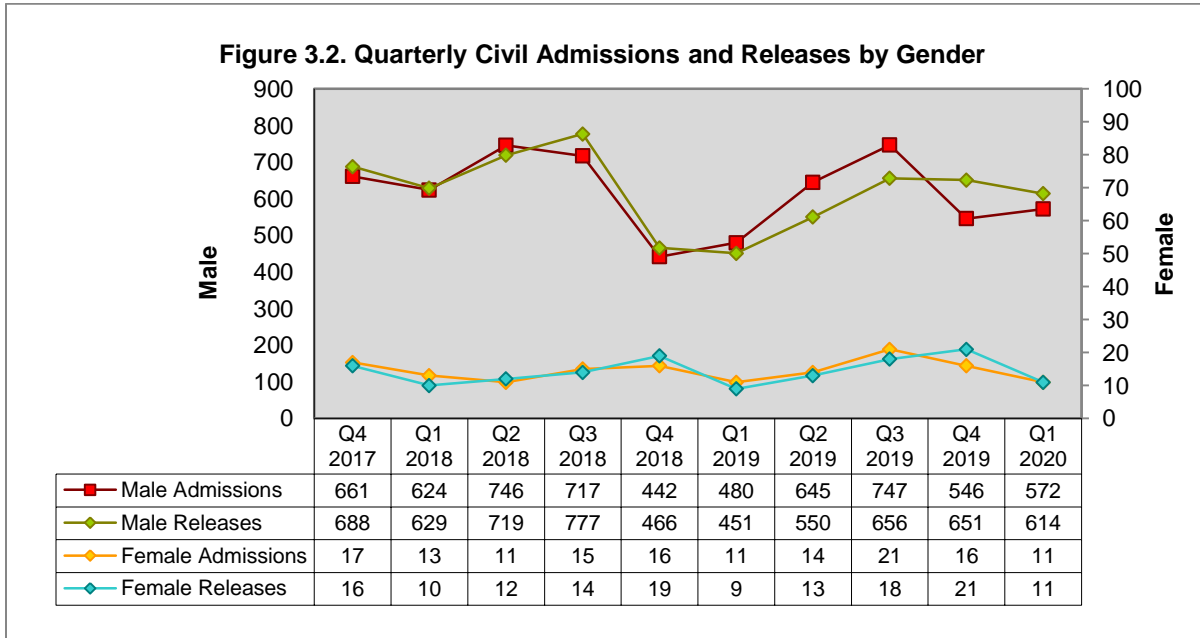
\*Excludes county, federal, and out-of-state inmates.

### CIVILLY COMMITTED ADMISSIONS AND RELEASES

In the first quarter of 2020, civil releases remained slightly higher than admissions, even after dropping by 6.9 percent. For the ten-quarter trend period, the MA DOC has released 19 more civil commitments than it has admitted. See Figure 3.1.

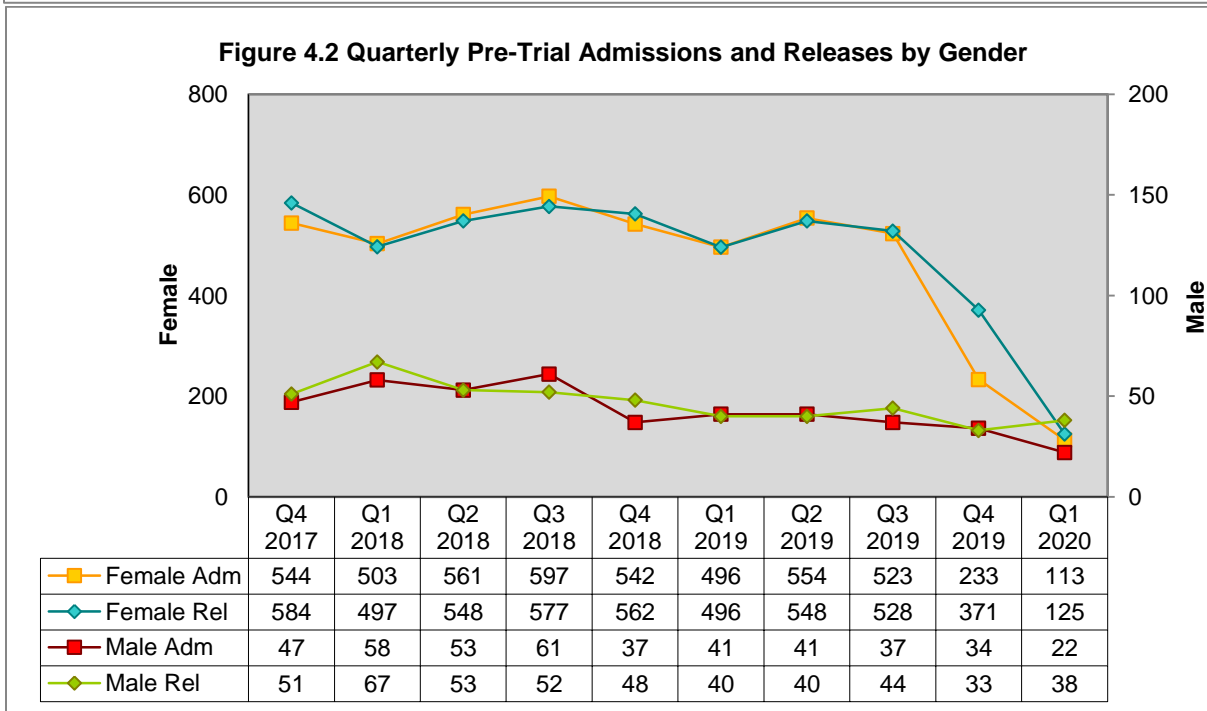
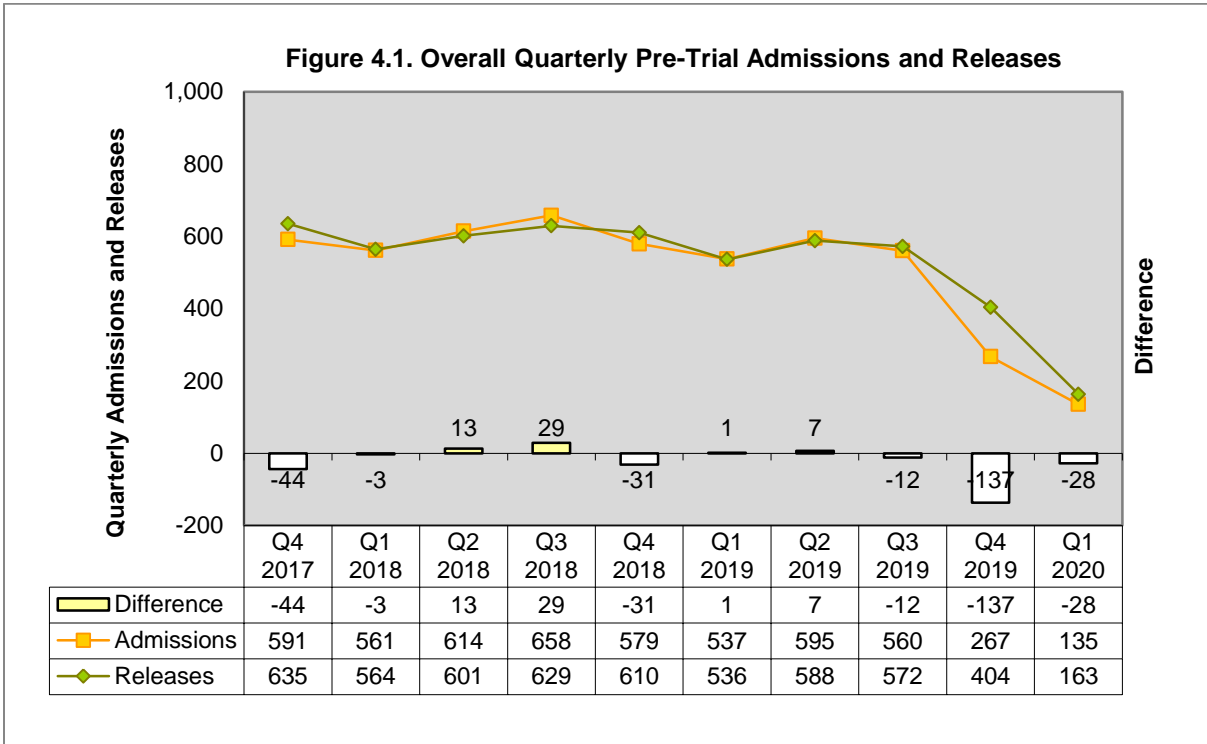


It was only male civil admissions that grew in Q1 2020, breaking a cyclical trend where admissions and releases tend to rise and fall in tandem. Female civil admissions and releases were equal at 11 each.



## PRE-TRIAL ADMISSIONS AND RELEASES

Pre-trial admissions and releases both dropped further in Q1 2020, to the lowest levels this trend period and even earlier. This drastic change is found primarily in female pre-trial detainees, whose admissions were cut in half this quarter (51.5 percent decrease), and female pre-trial releases, which decreased by 66.3 percent.



**Pre-Trial Admissions by Court Jurisdiction**

In the first quarter of 2020, male pre-trial detainee admissions rose slightly from the trend low of Q4 2019. Contributions from other state jurisdictions were highest; Worcester County sent 8 detainees to the DOC, more than from federal jurisdiction. See Table 4.3 below.

**Table 4.3 Male Quarterly Pre-Trial Admissions by Jurisdiction**

County	Q4 2017	Q1 2018	Q2 2018	Q3 2018	Q4 2018	Q1 2019	Q2 2019	Q3 2019	Q4 2019	Q1 2020
Out-of-state	11	7	7	10	8	7	14	6	7	12
Worcester	6	5	8	4	5	7	4	4	2	8
Federal	9	28	6	23	9	12	9	10	10	6
Suffolk	7	4	6	8	3	2	3	2	3	4
Middlesex	1	5	5	2	3	2	0	2	4	3
Plymouth	2	3	7	6	0	2	4	1	3	2
Norfolk	7	0	4	1	3	3	3	4	2	0
Essex	1	0	2	3	3	3	2	5	1	1
Hampden	0	0	3	1	0	3	2	1	0	0
Bristol	2	2	2	2	3	0	0	1	2	1
Barnstable	0	2	0	0	0	0	0	1	0	1
Mass Parole	1	2	1	0	0	0	0	0	0	0
Berkshire	0	0	0	1	0	0	0	0	0	0
Franklin	0	0	2	0	0	0	0	0	0	0
Total	47	58	53	61	37	41	41	37	34	38

\*Dukes County has not reported pre-trial males in any of the previous ten quarters.

As seen earlier in this report, female pre-trial detainees in Q1 2020 dropped again dramatically. Middlesex County is essentially the only county sending female pre-trial detainees to the DOC.

**Table 4.4 Female Quarterly Pre-Trial Admissions by Jurisdiction**

County	Q4 2017	Q1 2018	Q2 2018	Q3 2018	Q4 2018	Q1 2019	Q2 2019	Q3 2019	Q4 2019	Q1 2020
Middlesex	162	143	126	143	131	119	138	150	149	122
Norfolk	105	68	97	111	109	96	89	87	32	0
Essex	154	166	230	220	195	194	202	180	31	1
Plymouth	113	118	101	115	97	83	115	103	15	0
Federal	8	4	2	5	7	2	7	1	5	2
Worcester	0	0	0	0	0	0	2	1	0	0
Out-of-State	1	2	1	2	2	1	1	1	0	0
Berkshire	0	0	1	0	0	0	1	0	0	0
Hampden	0	0	3	0	0	0	0	0	0	0
Bristol	1	1	0	0	0	1	0	0	0	0
Suffolk	0	0	0	0	1	0	0	0	1	0
Mass Parole	0	1	0	1	0	0	0	0	0	0
Total	544	503	561	597	542	496	555	523	233	125

\*Franklin and Dukes counties have not reported pre-trial females in any of the previous ten quarters.



## **Appendix Notes and Definitions**

Note: This report examines admission and release trends over the past ten quarters for the Massachusetts Department of Correction (MA DOC). Unless otherwise stated, all trends in this report refer to the MA DOC jurisdiction population.

Numbers in this report may vary slightly from numbers in other reports due to the continuous updating of data and information in the Inmate Management System.

<b>Admissions</b>	Inmates who are admitted to a facility of the Department of Correction (DOC), pursuant to a court order, as a transfer from another DOC facility, or pursuant to the execution of a parole violation warrant. Inmates may also be re-admitted after a court release, or pursuant to the execution of an escape warrant (categorized as “Other” admissions).
<b>Civil Commitment or “Civil”</b>	A male who has been committed by a court to Bridgewater State Hospital pursuant to G.L. c. 123, section 7 and 8, 15, 16 or 18; or to the Massachusetts Alcohol and Substance Abuse Center pursuant to G.L. c. 123, § 35; or to the Massachusetts Treatment Center pursuant to G.L. c. 123A; a female who, prior to April 24, 2016, was committed to MCI-Framingham pursuant to G.L. c. 123, § 35; or a female who has been committed to MCI-Framingham, a branch of the Massachusetts Treatment Center, pursuant to G.L. c. 123A.
<b>Criminally Sentenced or “Sentenced”</b>	Individuals who have been found guilty of a criminal offense by a judge or jury and have been committed to a period of incarceration, whether directly or after a violation of probation or parole.
<b>Custody Population</b>	An inmate that is incarcerated in Massachusetts DOC facility.
<b>Expiration of Sentence (Release)</b>	An inmate is discharged from his/her sentence at the expiration of his/her term, less any statutory or earned good time. Statutory good time was eliminated for all offenses committed after June 30, 1994, due to the enactment of the “Truth in Sentencing” law.
<b>HOC</b>	House of Correction, i.e. county jail or correctional facility.
<b>Jurisdiction Population</b>	An individual is considered to be under Massachusetts DOC jurisdiction when the Commonwealth has legal authority over the individual regardless of where the inmate is being held to include those incarcerated in Massachusetts DOC facilities as well as those housed in correctional facilities outside of the Massachusetts DOC (Massachusetts Houses of Correction, other state’s correctional facilities and the Federal Bureau of Prisons).
<b>MA DOC</b>	Massachusetts Department of Correction, i.e. state prison.

**MASAC**

MASAC is a facility whose institutional focus is to provide services to males civilly committed by the court under M.G.L., Chapter 123, Section 35 for detoxification and substance abuse treatment for up to 90 days.

**New Court Commitment**

Newly sentenced and committed inmates admitted to a committing institution as prescribed by law. Individuals committed by the courts to the Massachusetts Department of Correction (DOC) as a result of a criminal offense. All new court commitments and those individuals who began serving new sentences (e.g., From and After Sentences) during the year are included in this category even if there was no physical release from custody upon the completion of one sentence and the commencement of another sentence. If an individual is committed to the DOC more than once during the current trend period, each court commitment for that individual is counted separately.

**Parole (Releases)**

Inmates released on parole are under the supervision of parole while in the community and may be re-incarcerated for violating the terms of their supervision. Unless otherwise specified, parole to other authority may include: "Parole to Out of State Sentence", "Parole to Federal Authority", "Parole to Immigration", "Parole to From & After HOC Sentence", "Parole to Warrant", "Parole to From & After DOC Sentence", or "Parole to Civil Commitment".

**Pre-Trial Detainee**

An individual who is detained prior to trial, but not yet convicted of a crime to include male and female county detainees, male county detainees transferred to state facilities under Massachusetts General Law Chapter 276, section 52A, and federal detainees (both male and female).

**Probation Violation**

An inmate who has been returned to resume serving a previously imposed sentence (return on a split sentence) following a revocation of his/her terms of probation. Split sentences to the state prison were eliminated for offenses committed after June 30, 1994, pursuant to the "Truth-in-Sentencing" Act of 1994.

**Releases**

A release occurs when an inmate is released from the jurisdiction of the Massachusetts DOC by way of expiration of sentence, parole, a non-DOC release to other jurisdiction, a court release or other legal release from the custody of MA DOC. "Other" releases include: "habeas to court – received forthwith sentence", "escape", "death", "court release – sentence revoked", and "release to from and after at DOC."

**Release to Community**

The release of an inmate from the custody of the Massachusetts DOC by way of parole or discharge to the community. Conditions warranting a release to community generally include parole, expiration of sentence, expiration of fine, and court release.