

# ***Cape Cod Bridges Project***

Cape Cod Bridges Advisory Group

December 9, 2025

***massDOT***  
Massachusetts Department of Transportation



# Table of Contents

- 01 Introductions
- 02 Program Update
- 03 Design Development
- 04 Upcoming Work Activities

# *Introductions*



# Advisory Group Members

## Program Team

- MassDOT
- USACE
- HNTB
- Stantec
- Office of Governor Healey

## State and Federal Elected Officials

- Office of Gov. Healey
- Office of Sen. Markey
- Office of Sen. Warren
- Office of U.S. Rep. Keating
- Office of U.S. Rep. Lynch
- State Sen. Cyr
- State Sen. Fernandes
- State Rep. Vieira
- State Rep. Luddy
- State Rep. Diggs
- State Rep. Xiarhos
- State Rep. Moakley

## Stakeholders

- Town of Bourne
- Association to Preserve Cape Cod
- Barnstable County Regional Board of Commissioners
- Barnstable County Sheriff's Office
- Bourne Commission on Disabilities
- Bourne Police
- Bourne Public Schools
- Bourne Recreation Authority
- Bourne Selectboard
- Bourne Town Administrator's Advisory Committee on Pedestrian Bicycle Committee
- Cape Cod Canal Region Chamber of Commerce
- Cape Cod Commission
- Cape Cod Chamber of Commerce
- Cape Cod Metropolitan Planning Organization
- Cape Cod Regional Transit Authority
- Upper Cape Cod Regional Technical High School
- US Army Corps of Engineers
- Mass State Police
- MEMA

# *Program Update*





# Recent and Upcoming Public Outreach and Meetings

6

- 10/16 – Bourne Public Schools Community Resource Fair
- 10/21 – Wayfinding Workshop Town of Bourne
- 12/9 – Cape and Islands Bridge Coalition
- 12/9 – Advisory Group Meeting
- 12/16 – Bourne Public Schools STEM Event
- 12/16 – DEIS Public Hearing



# *Environmental Update*



# Environmental Update – Massachusetts Environmental Policy Act (MEPA)

8



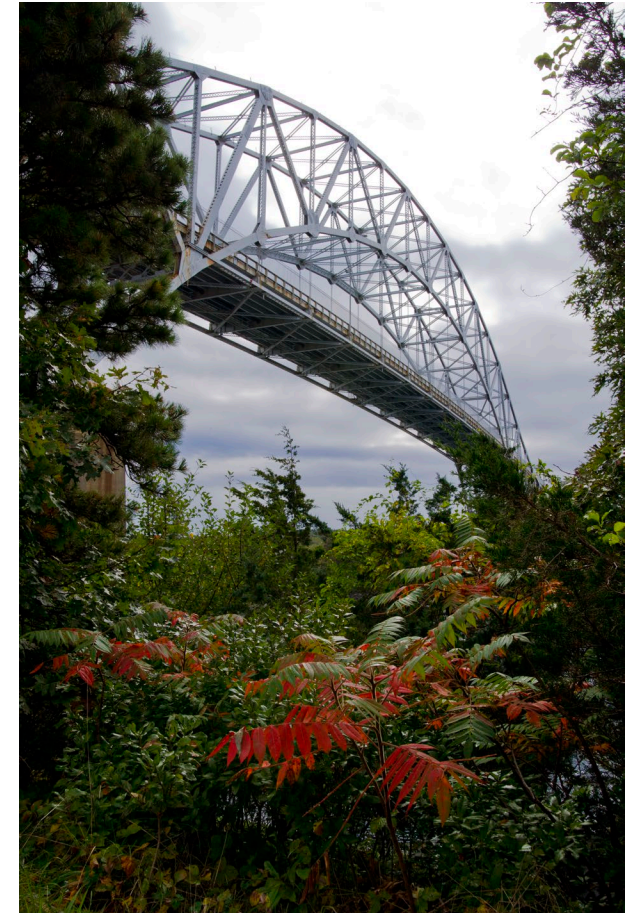
- **October 31<sup>st</sup>** – Secretary's Certificate issued on the Draft Environmental Impact Report (DEIR)
  - Includes the scope of the Final Environmental Impact Report
  - 27 comment letters were submitted during the public review and comment period
- **Winter 2026** – Final Environmental Impact Report (FEIR)
  - Will address scope requirements and include responses to public and agency comments
- **Spring 2026** – Secretary's Certificate issued



# Environmental Update – National Environmental Policy Act (NEPA)

9

- **November 21<sup>st</sup>** – Draft Environmental Impact Statement (DEIS) Notice of Availability published in the Federal Register
  - <https://www.mass.gov/lists/draft-environmental-impact-statement-for-replacing-the-cape-cod-bridges>
  - <https://cdxapps.epa.gov/cdx-enepa-ll/public/action/eis/details?eisId=536281>
  - Findings of the DEIS are largely similar to the DEIR
  - Includes Draft Section 4(f) Evaluation for impacts to historic and recreational resources
- **December 16<sup>th</sup>** – DEIS public meeting held at 6:00pm at Mass Maritime Academy
- **January 5<sup>th</sup>** – Public comment period closes
- **Winter/Spring 2026** – Combined Final Environmental Impact Statement (FEIS) and Record of Decision (ROD) published



# Environmental Update – Section 4(f) and Recreational Resources

10

- The project will impact the following recreational facilities
  - Sagamore Recreation Area (USACE)
  - Keith Field (Town of Bourne)
  - Bourne Scenic Park (USACE and BRA)
  - Bourne Recreation Area (USACE)
  - Gallo Ice Arena (BRA)
- MassDOT continues to coordinate mitigations with the Officials with Jurisdiction
- Mitigations include the following
  - Expanded and new parking areas
  - Bicycle and pedestrian connections
  - Relocation and/or replication of facilities and amenities
  - Access and safety improvements





# Environmental Update – Section 4(f) and Recreational Resources

11

- MassDOT anticipates FHWA will make a Section 4(f) de minimis determination based on mitigations and enhancements
- Impacts and mitigations are presented the Section 4(f) Chapter of DEIS
- Section 4(f) requires public review to conclude the process
- A Section 4(f) and recreation open house event is anticipated in January 2026
- Officials with Jurisdiction will be asked to provide written concurrence with the de minimis determination prior to the FEIS

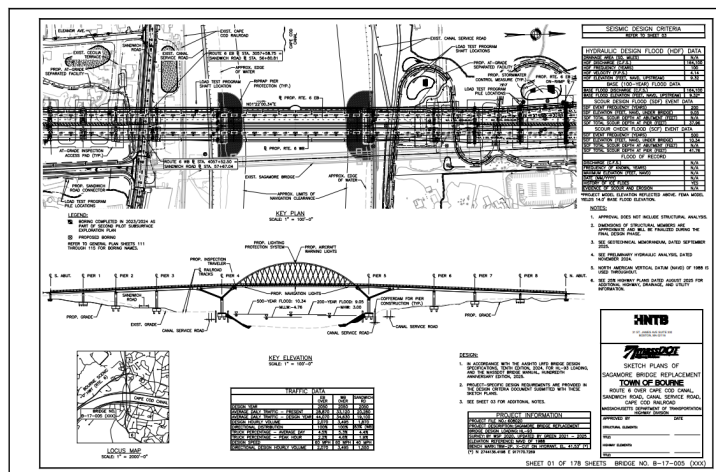
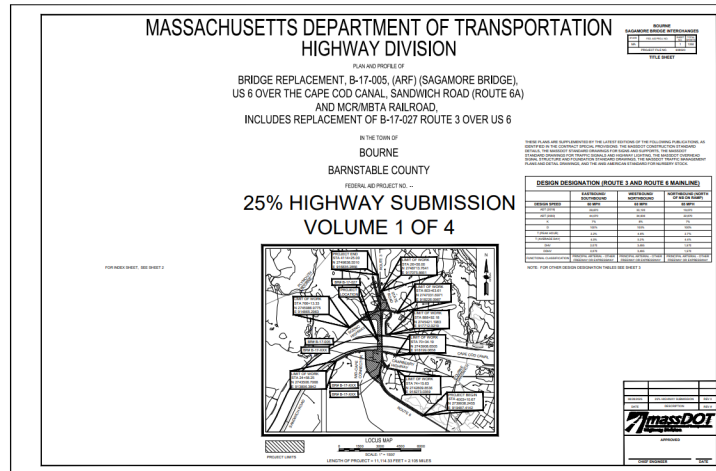


*Design  
Development*



# Preliminary Design Development

13



The Preliminary Design is advancing consistent with the Build Alternative identified in the DEIR and DEIS.

MassDOT has completed its review of the Preliminary Roadway and Structural Submittals for the Sagamore crossing.

Updated Preliminary Roadway and Structural Submittals for the Sagamore crossing will be completed in January of 2026.

MassDOT will be transitioning to the preparation of Design Build procurement documents for the Sagamore crossing.

The Preliminary Roadway Submittal for the Bourne crossing is currently under review.



*Wayfinding*



# Wayfinding Update

15

**October Coordination Meeting:** Representatives from MassDOT, Town of Bourne, Town of Sandwich, and Cape Cod Commission

## Guiding Principles:

- Limit  $\leq 3$  destinations per post
- Core functions: Orientation, Route Decision, Monitoring, Destination Recognition
- Selected destination locations based on distances of 1, 2 and 5 miles

## Next Steps:

Spring 2026: Follow-up session with wayfinding working group

- Present refined destination list
- Share updated design plans post-MassDOT review
- Align with CCC and Town priorities
- Finalize locations for interpretive signs and map kiosks

## ***Rail Crossings***



# Rail Crossing Design and Compliance

17

- ✓ **MassDOT Concurrence on Design**
- ✓ **USACE Concurrence on Design**
- ✓ **MassDOT Rail & Transit Concurrence**

Joint review and agreement on design elements

- ✓ **FRA Coordination**

Engagement with FRA for regulatory oversight

Coordination with rail operators and stakeholders

- ✓ **Diagnostics Checklist Compliance**

Adherence to diagnostic review process

Verification of signalization, clearance, and operational safety

## **FRA/Mass Coastal Crossing Application (In Progress)**

Mass Coastal to apply for four new crossings through FRA



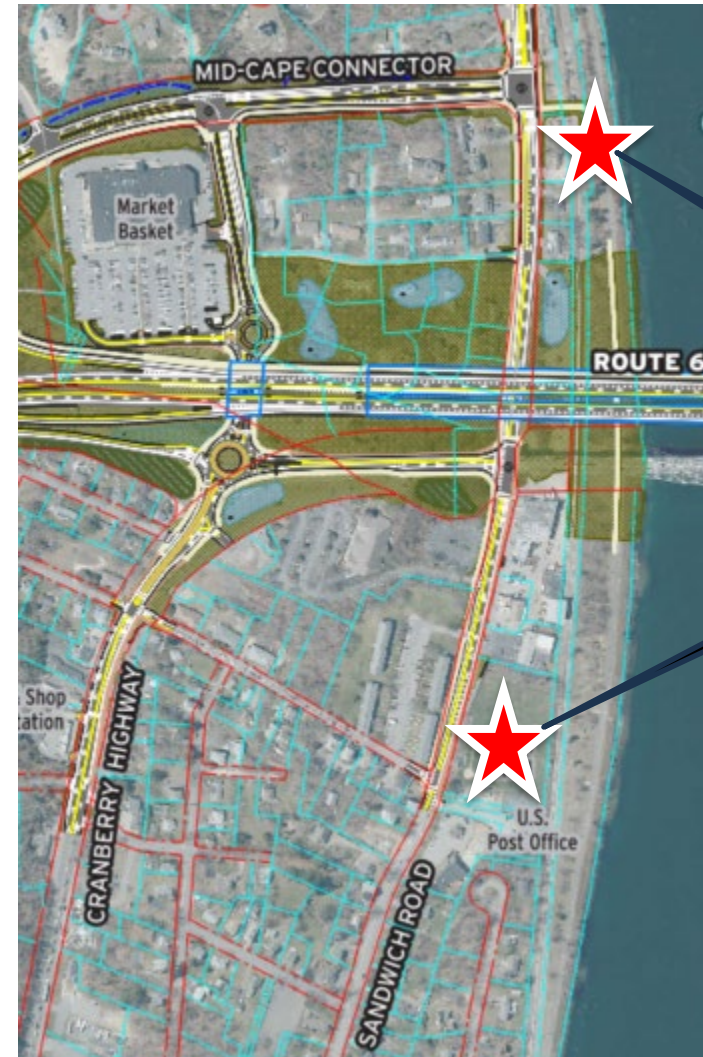
# Proposed Permanent Rail Crossing Locations

18



Bourne Bridge Approach

Gallo Ice Arena



Mid-Cape Connector

Keith Field



# Platform Replacement at Gallo Ice Arena

19

MassDOT plans to replace the existing platform in-kind. The scope of work includes:

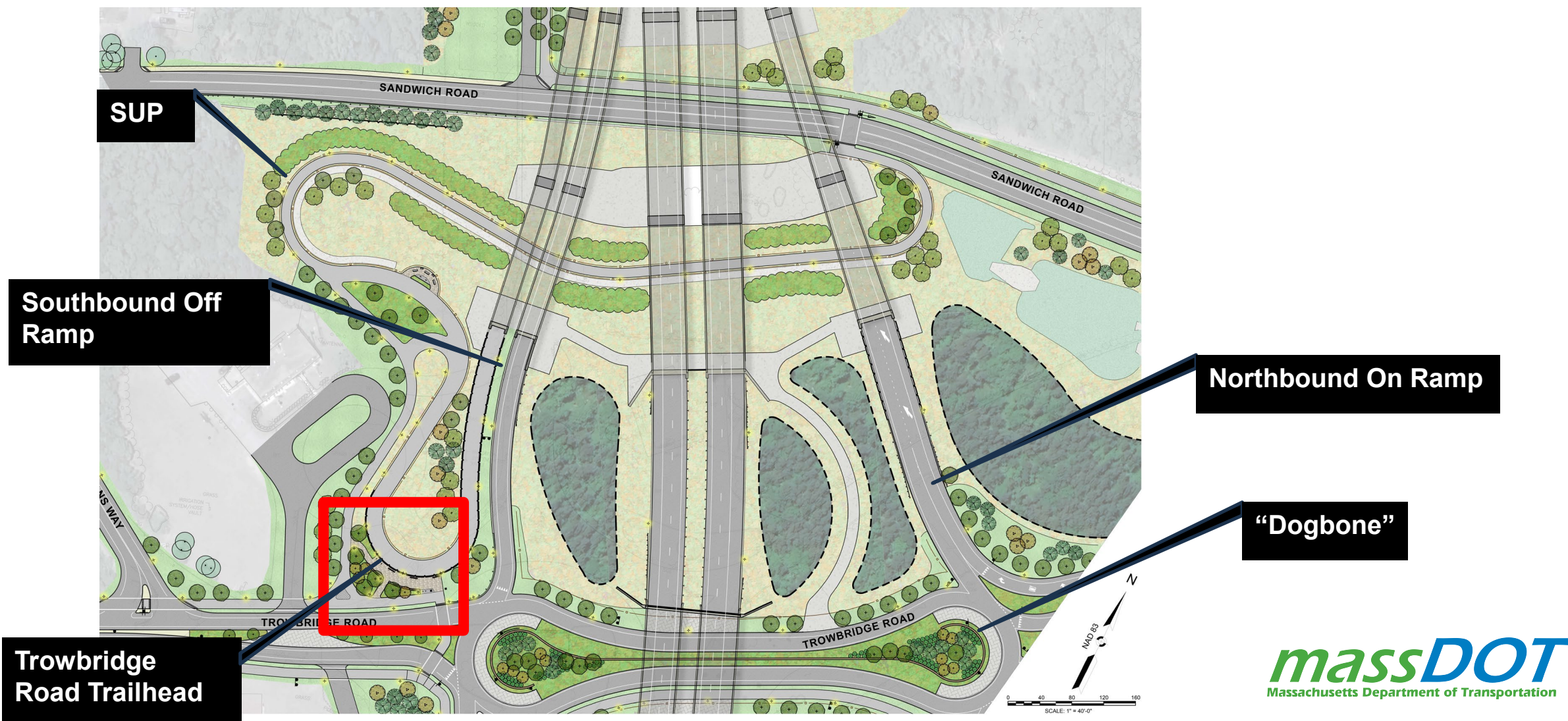
- Reconstruction of the platform to match the existing size and length
- Installation of tactile warning strips, accessible slopes, and ADA-compliant crossings
- Implementation of ADA-compliant signage, wayfinding, and boarding features
- Lighting to be incorporated into the new platform design



*Trailheads*



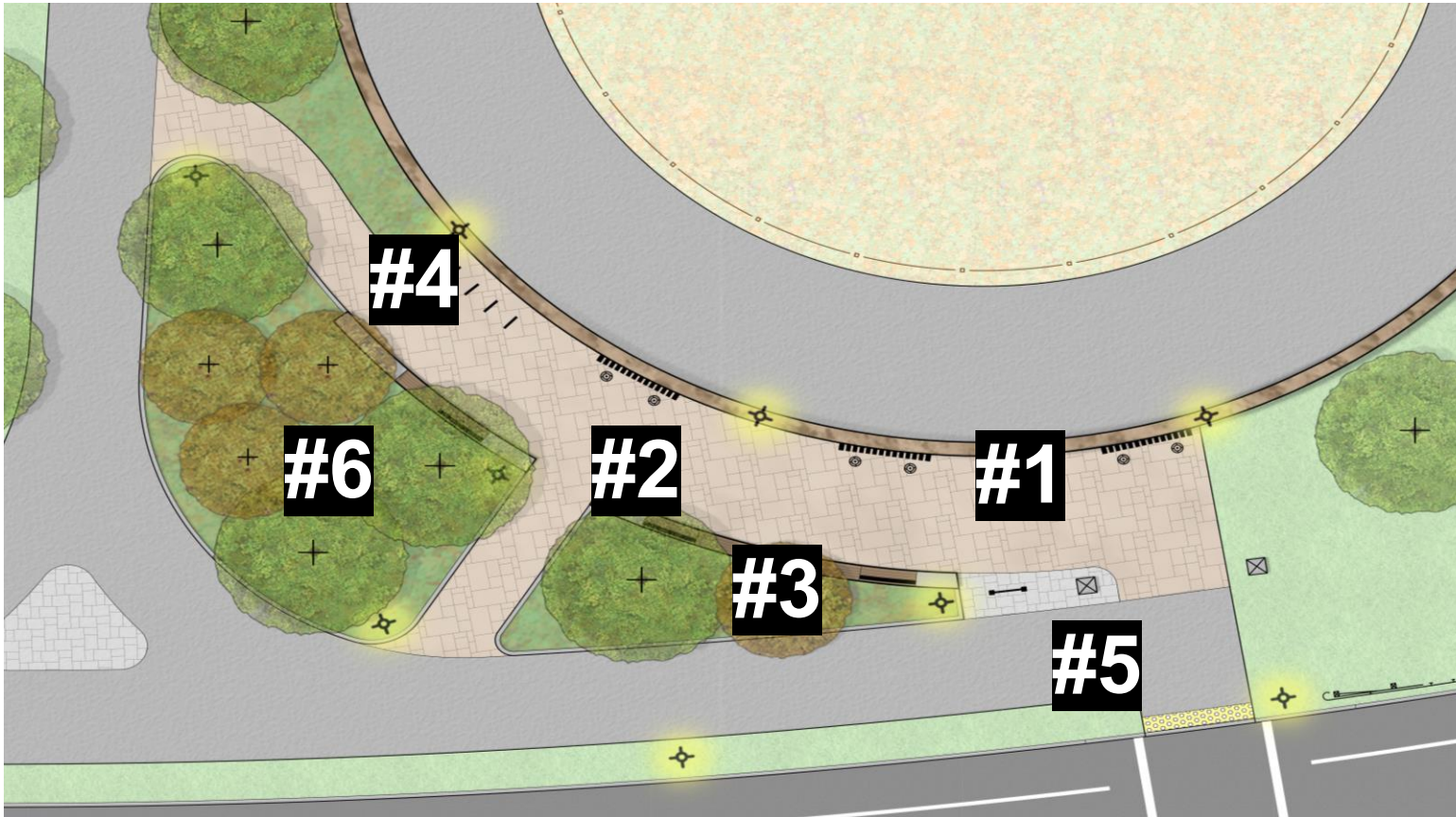
# Bourne South Trailhead





# Bourne South Trailhead (Enlarged)

22



#1



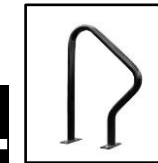
#2



#3



#4



#5



1. Historic Photo Wall

3. Wood Seat on Granite Wall

5. Wayfinding

2. Stamped and Colored Concrete

4. Bicycle Parking

6. Landscaped Area for Separation

*Retaining Wall  
Exposure*





# Retaining Wall Exposure Overview

## High Exposure

- Highly visible to pedestrians and bicyclists
- Adjacent to public spaces or shared-use paths

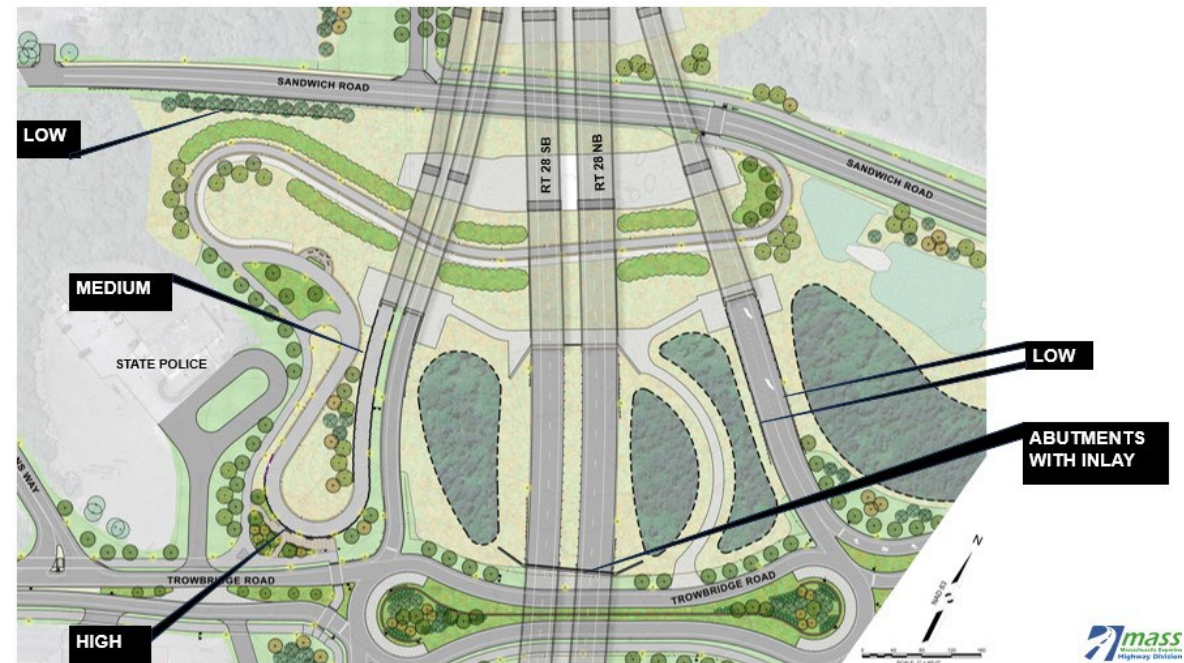
## Medium Exposure

- Visible to roadway users and abutters
- Difficult to screen with plantings

## Low Exposure

- Oriented toward wetlands, SCM, or new forest
- Limited visibility from highway or SUP
- Easily screened with plantings

Bourne South Example

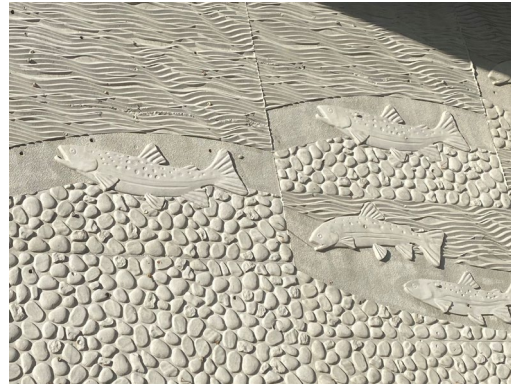


# Wall Surface Treatments

---



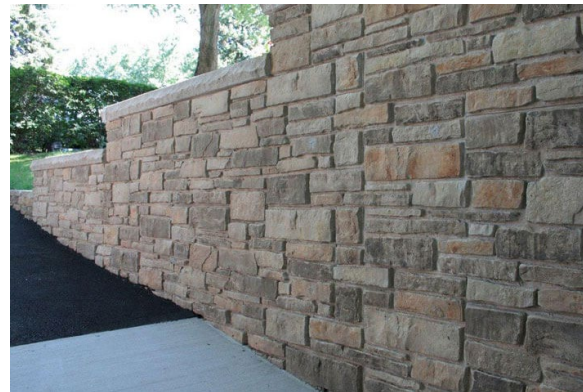
***Low Exposure  
Prefabricated Wall System***



***Custom Formliners  
Highly Visible Abutments***



***High Exposure  
MassDOT Stone Masonry Wall***



***Medium Exposure  
Formliner with Architectural Stain***

***Upcoming  
Work Activities***



*Ongoing  
Borings*





# Borings



- Nearly 200 borings completed to date
- Majority performed on public property
- Ongoing borings north of Sagamore Bridge require tree removal (see image)
- Upcoming borings will require access to private property
- Property owners will be notified in advance



# *Endangered Species Survey*



# State-Listed Protected Species and Habitat Survey

---

The MA Natural Heritage and Endangered Species Program (NHESP) listed two new protected species since the 2020 species and habitat assessment

- Purple Tiger Beetle
- Wild Lupine

Starting **December 10**, MassDOT will survey areas along Route 6 and Route 28 for suitable species habitat

Survey activities will take place entirely within State Highway Layout

Survey results will be reflected in the Final Environmental Impact Report and coordinated with NHESP.



*Purple Tiger Beetle*



*Wild Lupine*

# *Foundation Load Test*



# Foundation Load Testing Program

Bids were recently opened for the Foundation Load Test contract.

This contract involves installing drilled shafts and driven piles and then testing the performance of the installed shafts and piles.

This work is being performed to confirm construction methods and geotechnical resistance values for both drilled shafts and driven piles.

The results will be shared with bidders to mitigate contractor risk and improve pricing.



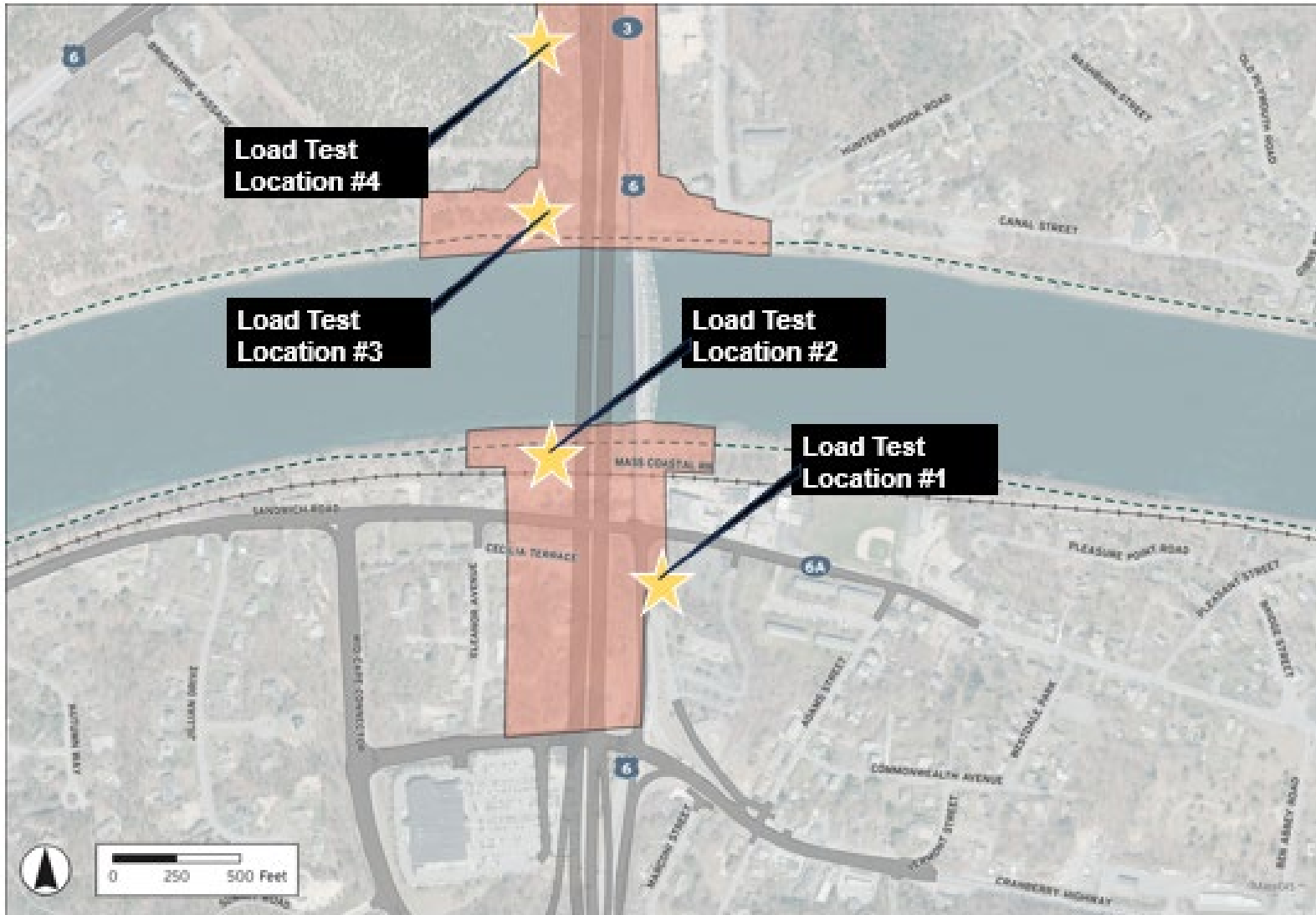
Example Pile Load Test



Example Drilled Shaft Load Test



# Foundation Load Testing Program



Work to take place on property owned by either MassDOT or the USACE.

Work will occur during the day.

Construction is anticipated to begin in the Spring of 2026 and continue through the summer.

# Thank You



# Multimodal Network – Bourne and Sagamore

