

Airport Economic Impact Study & Vegetation Management Program Updates

-Board Report-

Monday December 11, 2017

Presented to:

■ Board of Directors

Presented by:

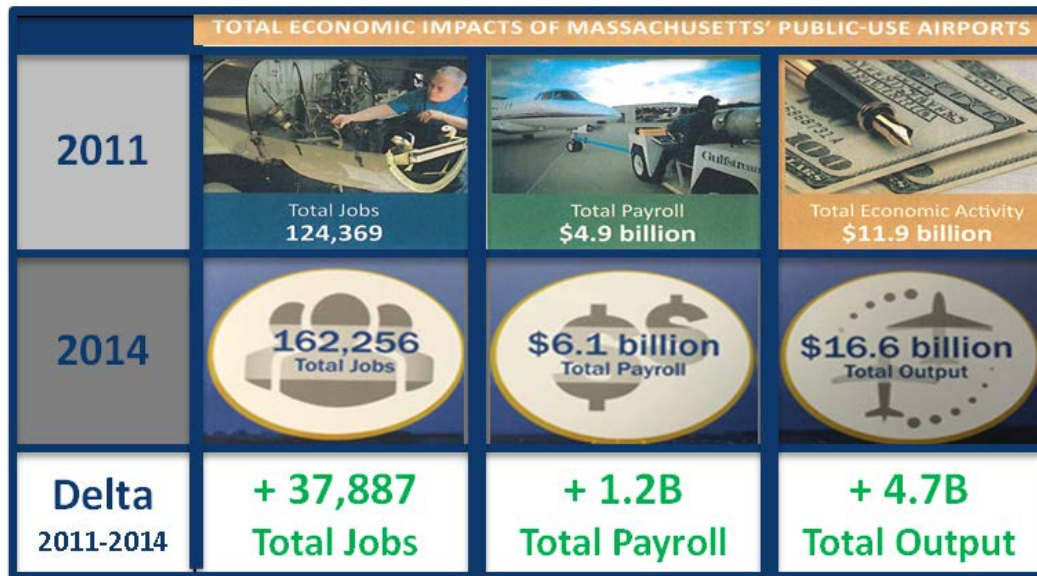
■ Aeronautics Division

➤ Dr. Jeff DeCarlo

Economic Impact of Public Use Airports



Results of previous studies show a positive Return on Investment



International traffic from Logan Airport was the main driver of the increase in economic output from 2011 to 2014, and surveys showed that international passengers have a higher than average spend rate per visit to Boston. The Cape and Islands also realized more seasonal service with increased operations from Jet Blue, American (AA) and Delta (DAL) operations, and general aviation airports saw a large increase in air charter and small jet traffic during that time

2017 Economic Impact Study Update



- MassDOT selected CDM Smith as the prime consultant for this study and recently finalized the project scope of work in early December
- The 2014 model will be updated to assess the economic impact of each airport through the various employment categories that provide aviation benefits to the Commonwealth
- The final updated model will be directly comparable to the 2014 Study effort so that changes by airport can easily be identified and explained
- Two case studies and a project video are anticipated to highlight the unique activities that take place in the Commonwealth
- An Executive Summary will be developed to explain the economic impact process in simpler and more understandable terms than previous studies, and will include stories about each airport that will make the study easier for the general public to understand and relate to. The project is expected to be completed in 9 months

Statewide Airport Vegetation Management Program (VMP)



Background

- MassDOT funding to assist airports maintain vegetation to prevent safety hazards to aircraft.
- Ongoing maintenance allowed under WPA; 310 CMR 10.00)



Status

- Completed the Yearly Operational Plan Updates for BAF, EWB, LWM, and GHG in FY17.
- (Note: AQW will carry over from FY17, just for the maintenance work – the YOP update has already been completed).
- Bid estimates for the VMP construction are due December 15th and vegetation management will follow soon after at each of the (5) airports

Airports	YOP Status	1 st Year Construction
Westfield-Barnes	Completed FY17	FY18
Lawrence	Completed FY17	FY18
New Bedford	Completed FY17	FY18
Marshfield	Completed FY17	FY18
Harriman & West	Completed FY17	FY18
Pittsfield	FY 2018	FY19
Stow Minute Man	FY 2018	FY19

Statewide Airport Vegetation Management Program (VMP)



Recent photos of vegetation cleared at Pittsfield Municipal Airport with ASMP-funded Skid Steer

Control of vegetation at public use airports is critical to the safety of aircraft operations. This equipment purchase (\$116,249) was funded by the Aeronautics Division at an 80/20 state/local funding split and will enable the airport to maintain additional mowing areas beyond the reach of standard airfield mowing equipment. This investment will result in a savings of approximately \$2,000/acre based on prevailing prices for brush mowing. Clearing approximately 10 acres per airport each year will save each airport an estimated \$20,000 in maintenance costs annually.

