

# **Aeronautics Report**

Acting Administrator Denise Garcia

*January 8, 2025*



## **Table of Contents**

- 3 Pavement Condition Index (PCI) Study Update
- 4 Expanded Visual Line of Site (BVLOS) Approval
- 5 Yearly Operating Plan Updates (YOPUs)
- 6 MAMA Quarterly Meeting

# Airport Pavement Maintenance System (APMS)

Triannual update that provides critical information for prioritization of capital spending

3



- Airport Pavement Maintenance System (APMS) provides information to assist with prioritization of capital spending for pavement projects
- Detailed field inspection of pavements at all 30 study airports are completed and post processing has begun
- APMS outputs are pavement condition index (PCI) and pavement classification rating (PCR)

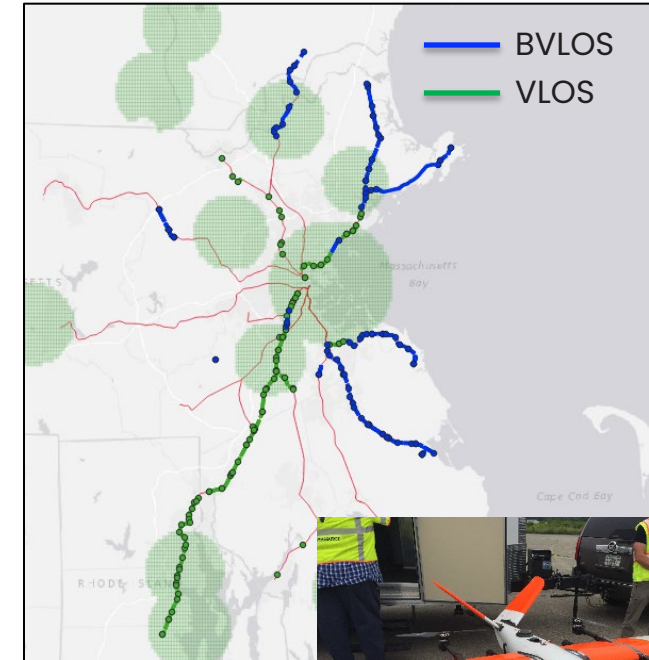
# Expanded Beyond Visual Line of Sight (BVLOS) Approval

Updated waiver expanding BVLOS operations across growing drone fleet

4

- Aeronautics has been gathering drone imagery of the MBTA Commuter Rail network on their behalf
- By utilizing an expanded “beyond visual line of sight” (“BVLOS”) waiver, the pilot can fly the drone longer distances than line of sight (“LOS”) supporting more timely and efficient data collection
- The new waiver also increases the “obstruction shielding” altitude from 50’ to 100’, at which altitudes they can fly using proximity to obstructions (trees, buildings, etc.) to shield from crewed aircraft
- The waiver also allows for remote operation of MassDOT’s Skydio Dock “drone in a box” system
- This waiver will enable use of MassDOT’s newly procured long-range drone, the Censys Sentaero 5, which will soon be delivered to MassDOT

Rail flown in 2024



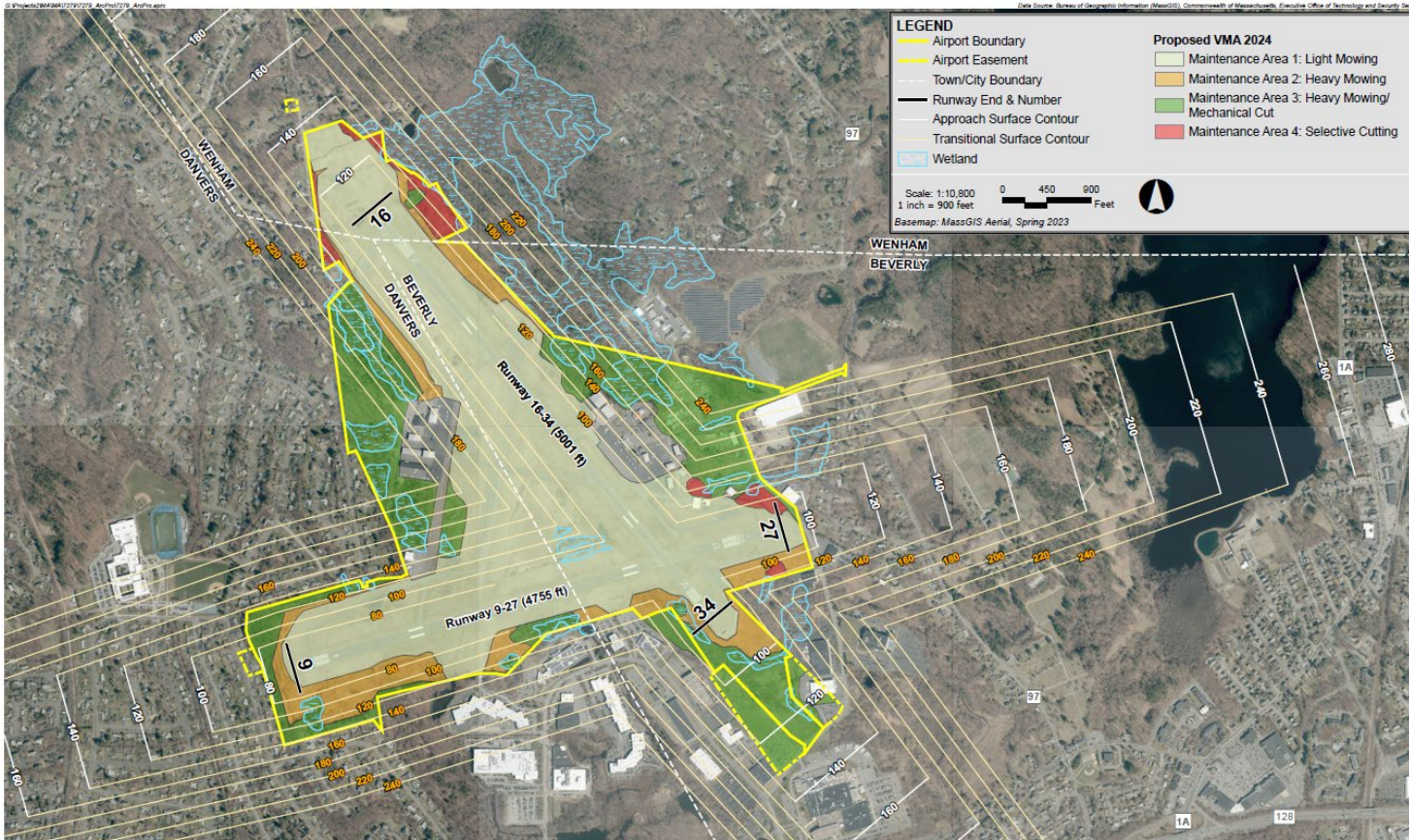
Censys Sentaero 5 drone



# Yearly Operational Plan Updates (YOPUs)

FY25 Statewide Contract for Vegetative management for clear approaches promotes airport safety

5



Beverly Regional Airport Beverly, Massachusetts

Epsilon

Figure 1

Aerial Locus (Vegetation Management Areas)

Vegetative Management Plans (VMPs) approved by local Cons Comm under Wetlands Protection Act (WPA).

Airport submits YOPUs every 5 years to Cons Comm summarizing airport vegetative management.

Fitchburg (FIT), Lawrence (LWM), Provincetown (PVC) and Southbridge (3B0) in FY25 project.



**massDOT**  
Massachusetts Department of Transportation



# Massachusetts Airport Management Association (MAMA)

Quarterly Membership Meeting – Cape Cod Gateway Airport

6



- Attendees representing airports, government officials, and aviation enthusiasts
- MassDOT Aeronautics representatives provided an airport cybersecurity panel presentation
- Updates provided by FAA New England Region Airports Division and MassDOT Aeronautics

# Thank You

