



# **EFSB APPROACH TO CUMULATIVE IMPACT ANALYSIS (CIA)**

**AGO/OEJE EJ Summit, June 17, 2026**

**Wayne Wang, MA DPU Siting Division/EFSB**



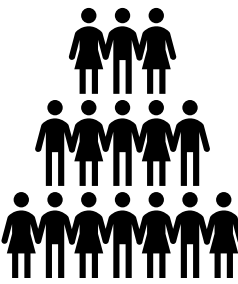


# Overview

- Energy Facilities Siting Board (EFSB)
- Definition of Cumulative Impact Analysis (CIA)
- CIA Report Process for Project Applicant
- CIA Report Contents
- Board Review of CIA Reports



# Energy Facilities Siting Board (EFSB)



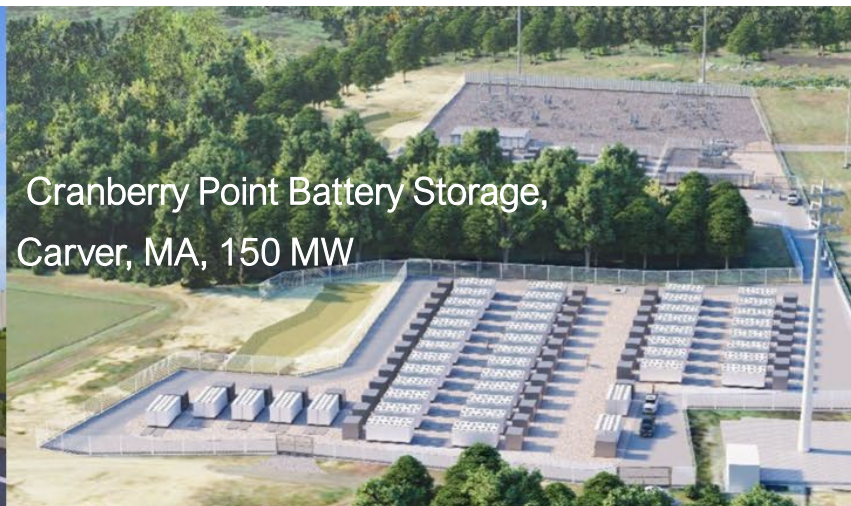
- Independent Board consisting of eleven members: 7 state agency heads and 4 public members (with expertise including municipal, labor, EJ and Indigenous sovereignty, and regional planning)
- Chaired by Secretary of Executive Office of Energy and Environmental Affairs (EEA)
- Siting Board jurisdiction is over large energy facilities and certain small energy facilities, including clean energy infrastructure facilities
  - MEPA role in EFSB-jurisdictional CEIF limited to Pre-Filing assistance and state agency liaison role
  - DPU Division of Public Participation (DPP) leads on EFSB Application Pre-Filing and Intervenor Support Grant Program
- The Siting Board conducts adjudicatory proceedings; issues decisions on consolidated permits, petitions to construct and certificates of environmental impact and public interest, for jurisdictional facilities



# Examples of Large Clean Energy Infrastructure Projects – EFSB Jurisdictional



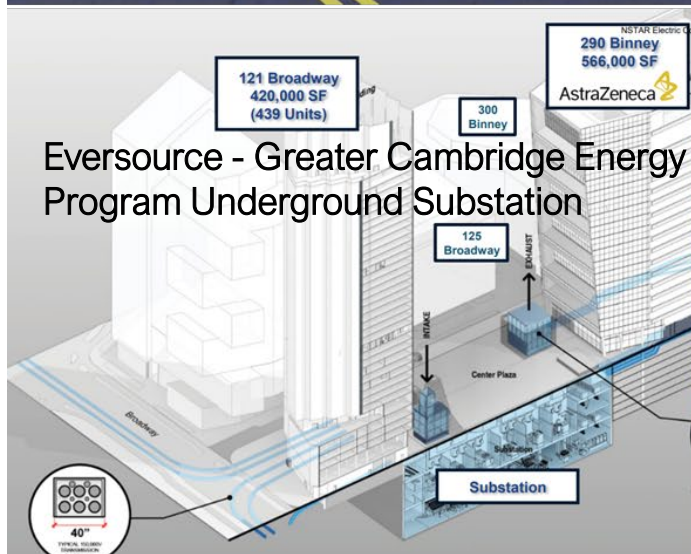
Trimount Energy Battery Storage,  
Everett, MA, 700 MW



Cranberry Point Battery Storage,  
Carver, MA, 150 MW



Hoosac On-Shore Wind  
Farm, Florida, MA,  
30 MW



Eversource - Greater Cambridge Energy  
Program Underground Substation



Eversource – Sudbury-Hudson  
Reliability Project 115kV  
Underground Transmission Line



# How the EFSB Makes Decisions

- Adjudicatory Proceedings – process defined in 980 CMR 1.00
- Phases of proceeding
  - Pre-filing Consultation and Engagement
  - Once Application is filed
    - Completeness Determination
    - Public hearing and comment process
    - Evidentiary process and hearings
    - Decision process and open EFSB meetings
  - Post Decision process: Appeals (SJC); Compliance and Enforcement (by PEAs, in part)

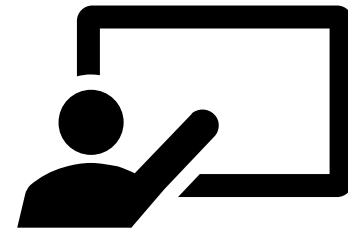


# Cumulative Impact Analysis (CIA)

- Cumulative Impact is the combined effects of past and present private, industrial, commercial, state, or municipal projects, operations, development, and other economic activities, in addition to the effects of the proposed Project on: **(1) the environment; (2) public health; and (3) reasonably foreseeable effects of climate change**
- [CIA Guidelines](#), now final, developed by Office of Environmental Justice and Equity (“OEJE”)
- Applicant required to evaluate whether project would likely cause any Disproportionate Adverse Effects in **Burdened Areas** and propose remedial actions for such Effects
  - cumulative burden percentile score (i.e, [MassEnviroScreen Score](#)) of 75 or greater, OR
  - annual median household income is 65 percent or less of the statewide annual median household income
- **Applicant shares results of analysis with stakeholders during pre-filing engagement activities**



# CIA Report Process by Applicant



(1) Identify the Specific Geographical Area (“SGA”) of the Project

(2) Determine whether the SGA overlaps any BAs *(If the SGA does not overlap with any BAs, the Applicant ends the CIA Report here)*

(3) For each SGA overlapping a BA, identify Indicator values and any Elevated Indicators of the BA

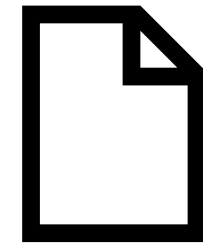
(4) Identify Project Impacts, including Disproportionate Adverse Effects, in the BA related to Elevated Indicators

(5) Propose remedial actions for any Disproportionate Adverse Effects

Analysis Using  
[MassEnviroScreen](#)



# CIA Report Contents



- [CIA Report Template](#) developed to facilitate reporting
- Noticed Site or Route to be assessed
- Map(s) showing SGA(s) with any overlapping Burdened Area(s)
- Project Impacts related to Elevated Indicators and whether Project materially exacerbates existing conditions, and summarize feedback from pre-filing process and response to that input
- Disproportionate Adverse Effects
- Proposed Remedial Actions to address Disproportionate Adverse Effects



# Petition for a CIA in a Non-Burdened Area

- CIA Petition - allows a group of ten or more residents and businesses in a Census Block Group that intersects the Project's SGA and is not identified as a Burdened Area to submit a petition to the EFSB to require the Applicant to perform a CIA in the Census Block Group for that Project
- Request must be made to Applicant, notifying DPP during pre-filing period. If Applicant declines to perform the requested CIA, the group may file a petition for CIA with the EFSB Director
- Siting Board Director may grant the CIA Petition only if "extraordinary circumstances" are shown to exist regarding the Census Block Group
- CIA Petition process includes procedural protections to ensure that the process does not cause delay to the proceeding



# Board Review of CIA Report

- Assess the **adequacy** of the CIA Report (and Site Suitability Report), including whether its Project Impacts will result in a Disproportionate Adverse Effect
- Whether the Applicant has given **due consideration** to the Cumulative Impact of the Project and adequately undertaken actions to avoid, minimize, or mitigate any Disproportionate Adverse Effects
- Consider whether an Applicant has made reasonable efforts to consider and develop a **Community Benefit Plan or Community Benefit Agreement**



# CIA Within Context of Broader Board Review

- CIA is one of many tools used by the Board to comprehensively evaluate a Project Application
  - e.g., ecological, historical and archaeological resources, tree canopy cover, constructability, etc. and geographical areas outside the Burdened Areas
- Site Suitability focuses on natural resource issues such as carbon sequestration in soils, biodiversity, and agriculture



# Thank you!



- Email for questions about EFSB regulations:  
[sitingboard.filing@mass.gov](mailto:sitingboard.filing@mass.gov)
- Webpage for EFSB regulations implementation:  
<https://www.mass.gov/info-details/efsb-permitting-dashboard>