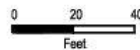
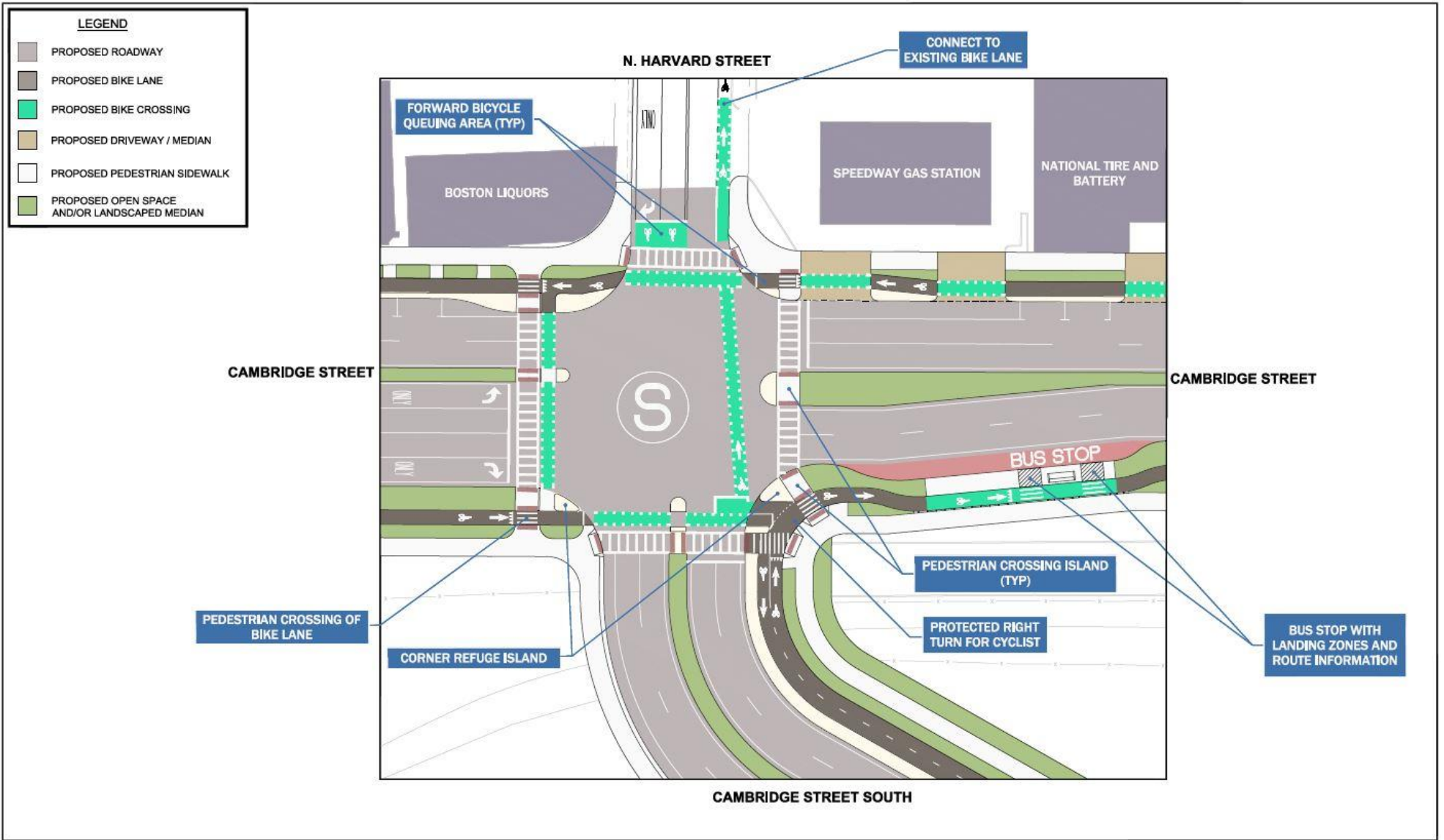


**DRAFT
FOR REVIEW
PURPOSES ONLY**

**Urban Interchange Alternative 3K
(Revised Street Grid)
Complete Streets Concept**

I-90 Allston Interchange Project

This map of the project area includes West Station, proposed roadways, bike lanes, crossings, truck aprons, sidewalks, driveways, medians, bus stops and railyard buildings and layovers.



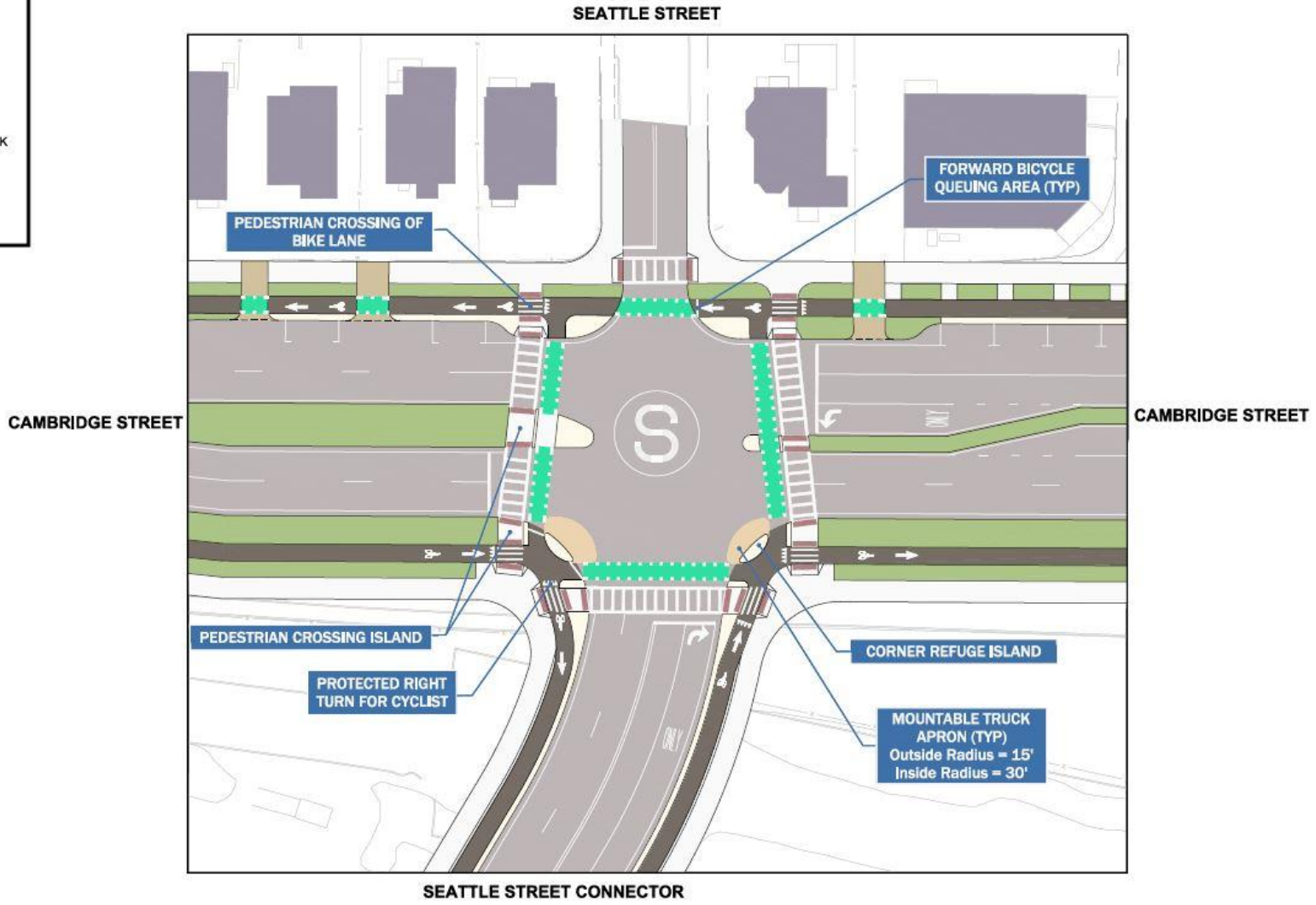
DRAFT
FOR REVIEW
PURPOSES ONLY

I-90 Allston Interchange Project

**Sample Intersection Components
for Complete Streets Facilities**

This aerial map shows where North Harvard Street meets Cambridge Street South at Cambridge Street. The intersection will feature corner refuge islands, a pedestrian crossing island and a pedestrian crossing at the bike lane, bus stop landing zones and route information, a protected right turn for cyclists, a connection to existing bike lanes and a forward bicycle queuing area.

LEGEND	
	PROPOSED ROADWAY
	PROPOSED BIKE LANE
	PROPOSED BIKE CROSSING
	PROPOSED DRIVEWAY / MEDIAN
	PROPOSED PEDESTRIAN SIDEWALK
	PROPOSED TRUCK APRON
	PROPOSED OPEN SPACE AND/OR LANDSCAPED MEDIAN

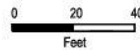
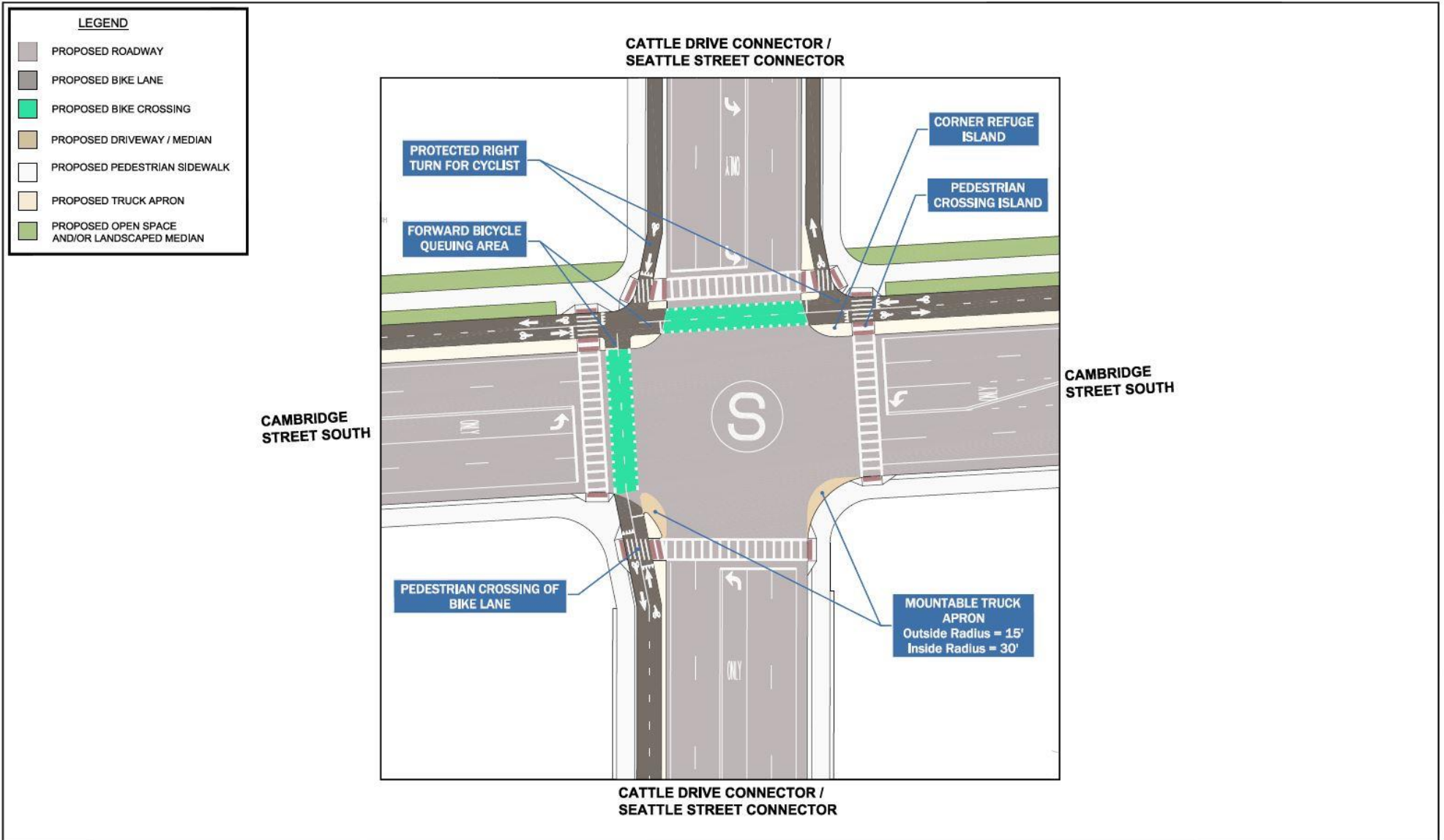


DRAFT
FOR REVIEW
PURPOSES ONLY

I-90 Allston Interchange Project

**Sample Intersection Components
for Complete Streets Facilities**

This aerial map shows where Seattle Street and the Seattle Street Connector meet at Cambridge Street. The intersection will feature corner refuge islands, a pedestrian crossing island and a pedestrian crossing at the bike lane, a mountable truck apron, a protected right turn for cyclists, and a forward bicycle queuing area.

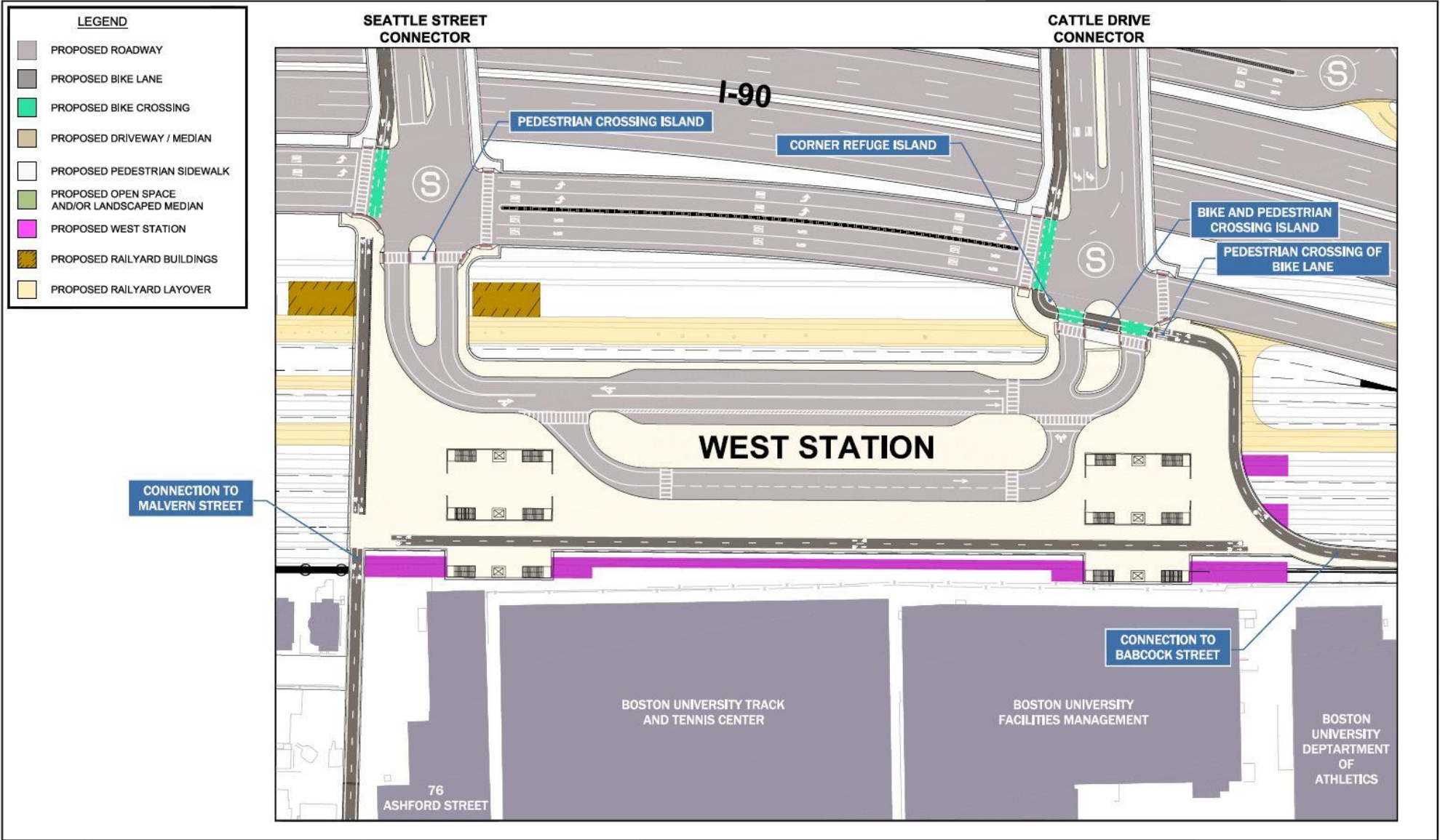


DRAFT
FOR REVIEW
PURPOSES ONLY

I-90 Allston Interchange Project

Sample Intersection Components
for Complete Streets Facilities

This aerial map shows Cattle Drive Connector and the Seattle Street Connector where they intersect Cambridge Street South. The intersection will feature corner refuge islands, a pedestrian crossing island and a pedestrian crossing at the bike lane, a protected right turn for cyclists, a mountable truck apron and a forward bicycle queuing area.



**DRAFT
FOR REVIEW
PURPOSES ONLY**

**Complete Streets
Connection to West Station**

This rendering of the West Station area includes pedestrian crossings, a corner refuge island, a bike and pedestrian crossing island, a pedestrian crossing at the bike lane, and connections to Malvern and Babcock Street.