

I-90 ALLSTON INTERCHANGE

A MULTIMODAL TRANSPORTATION PROJECT

MASSDOT/FMCB JOINT MEETING
NOVEMBER 18, 2019 – MASSDOT BOARD ROOM

This Project Update Covers:

- **MEPA/NEPA – Scoping Report**
- **Constructability**
- **Project Elements**
 - Temporary Soldiers Field Road By-Pass
 - Charles River Bank Park Alternatives



Project Update: NEPA/MEPA



- The Scoping Report was published November 6 with Public Meeting held November 7 to introduce report to the public, kicking off the Scoping Process and 37-day public comment period.
- Next Public NEPA Meeting December 4, 2019 Dunning School, Framingham
- Comment Deadline December 12, 2019

MEPA

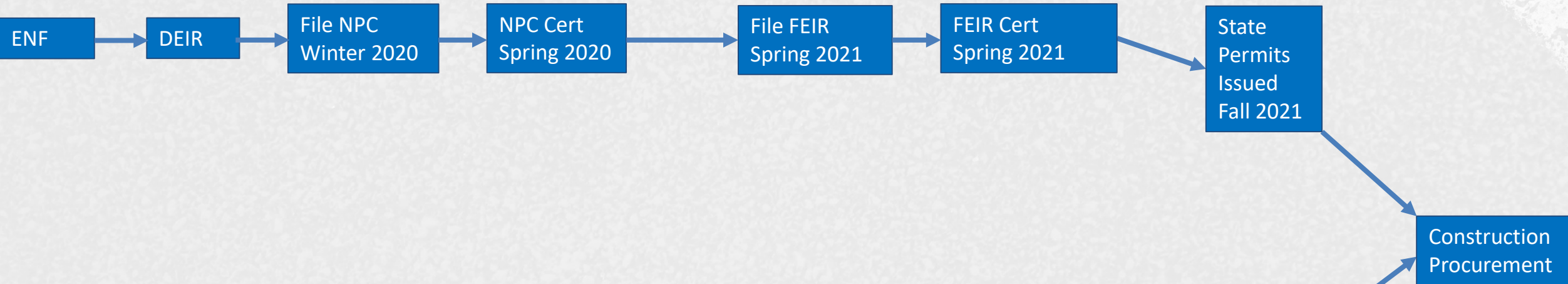


- **File Notice of Project Change early 2020**
- **NPC Documents changes and decisions since the DEIS Scoping Report publication**
- **Informs scope for DEIS**

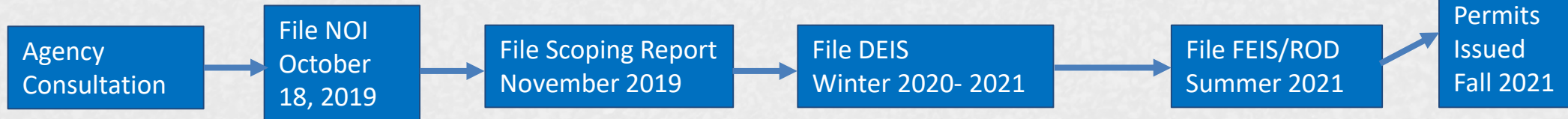
Draft MEPA/NEPA Flow Chart



MEPA



NEPA

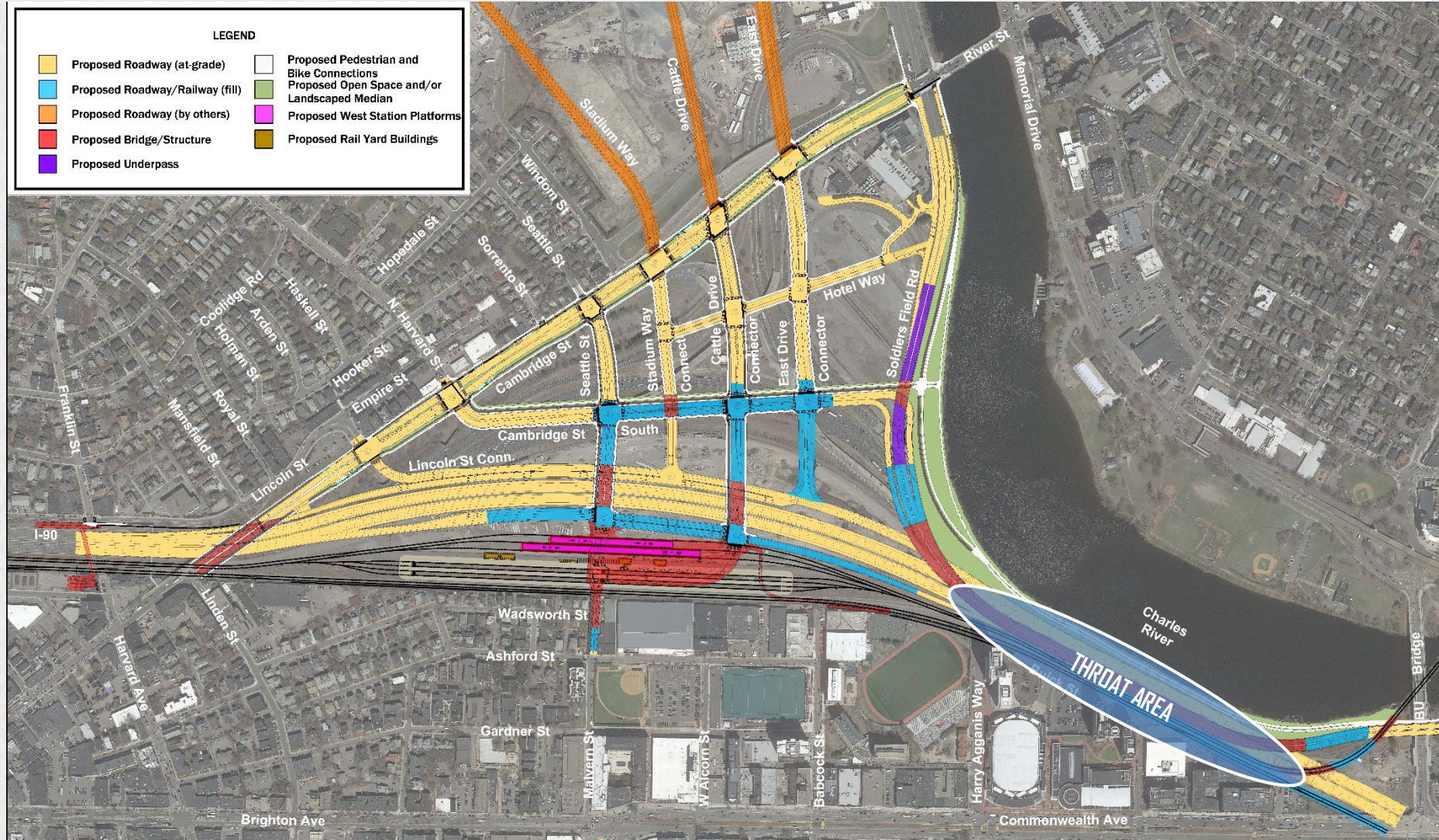


Project Update: Constructability



Re-Alignment Alternative Plan ("3L")

DRAFT





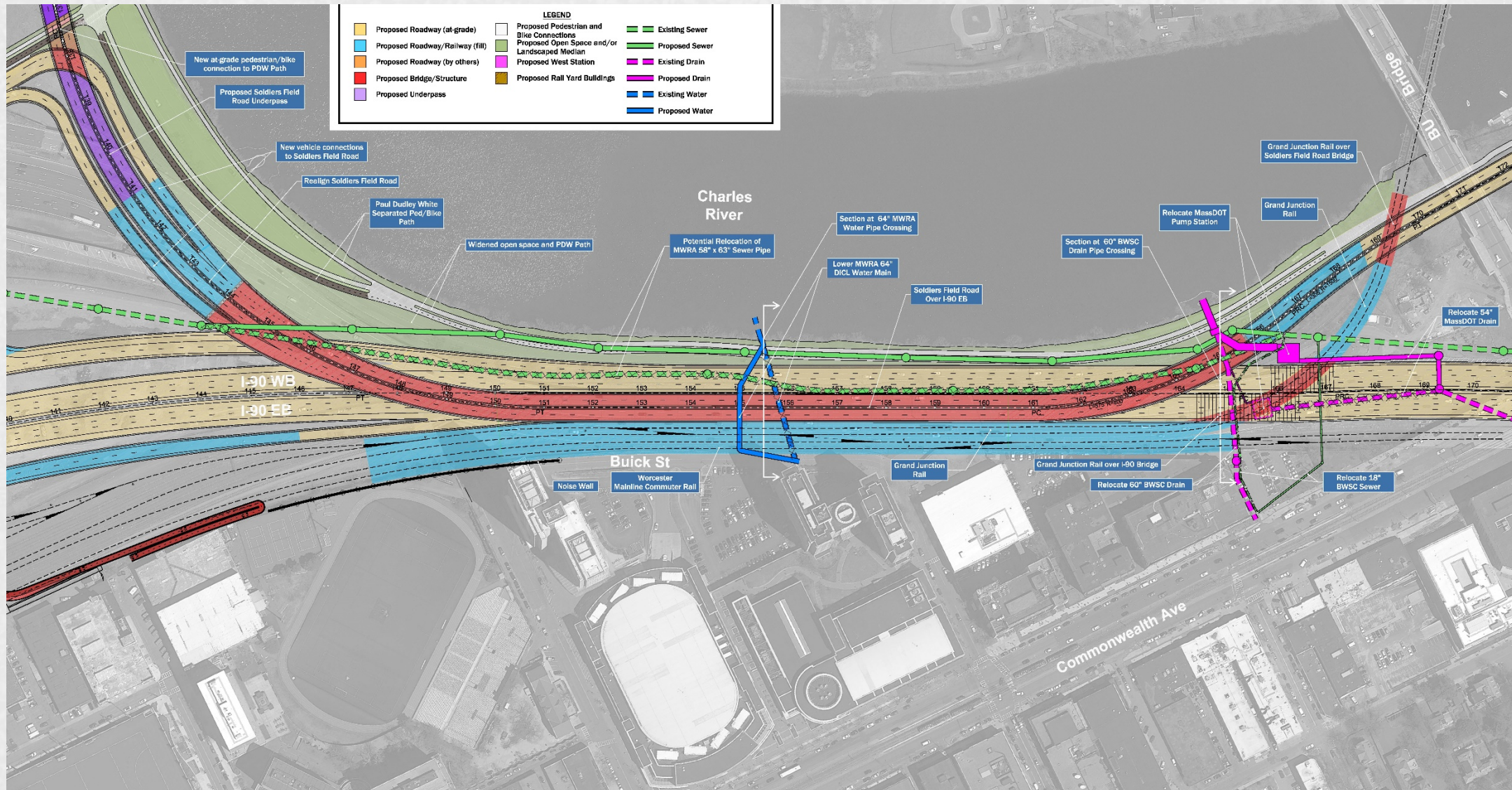
SFR Hybrid Option Constructability

- For all options under consideration, required to keep all modes of travel open during construction
 - Paul Dudley White Path
 - Six lanes Mass. Turnpike
 - Four lanes Soldiers Field Road
 - Maintain two commuter rail lines for as long as possible
- Temporary realignment of SFR is required during construction due to fixed location of SFR Hybrid Viaduct, major utility relocations, clearances to maintain travel modes, provide safe work zones and construction access/egress
- Duration of construction: 8-10 years

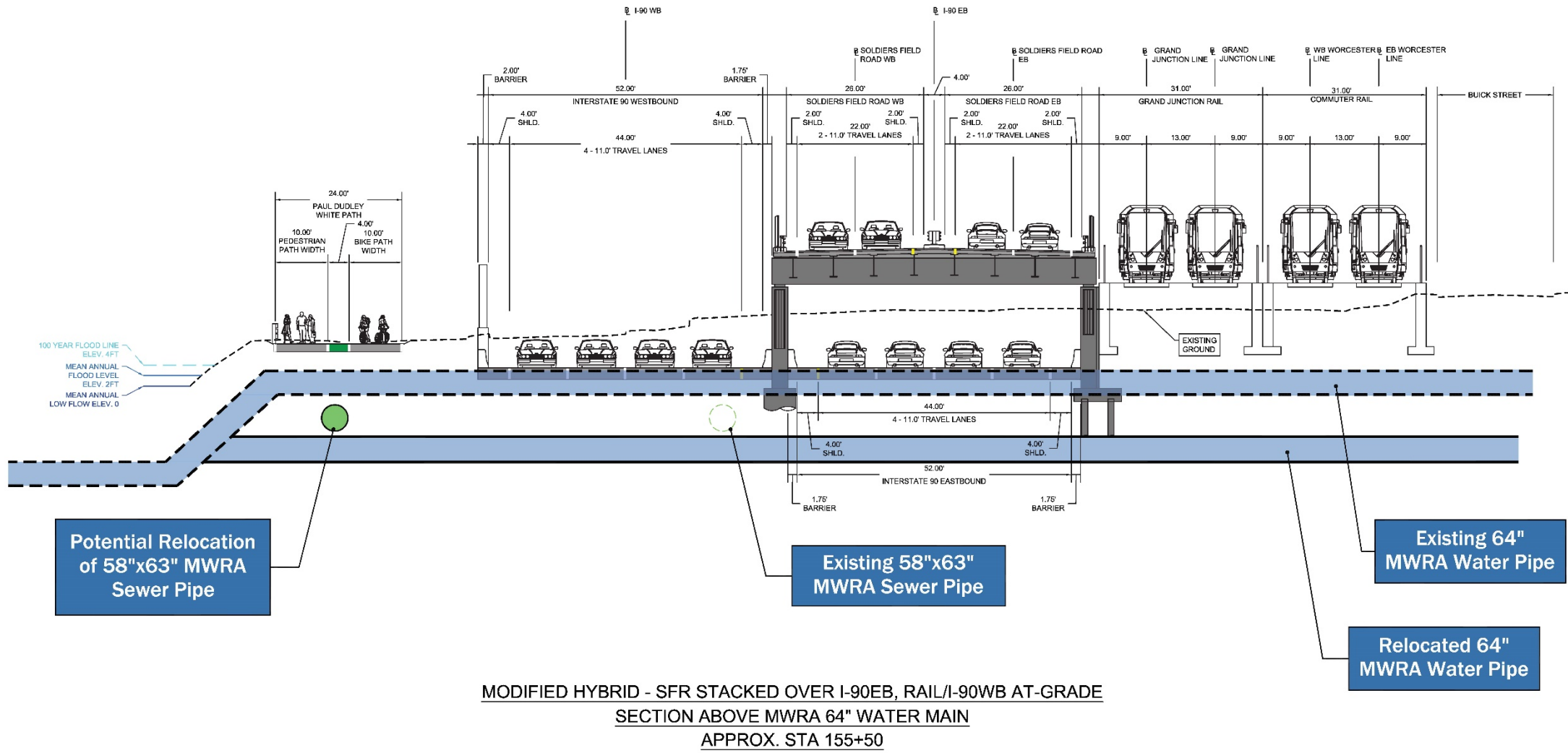
SFR Hybrid Constructability Complicated by Major Utilities

- **MassDOT**
 - Drainage Impacts - Relocation of existing drainage pump station
 - New Pump Station for Proposed SFR Underpass
- **MWRA**
 - Sewer Main Impacts – 58" X 63" Brick and 60" RCP
 - Relocation within Median below Proposed Paul Dudley White Separated Ped and Bike Paths
 - Water Main Impacts – 63" in 84" steel sleeve
- **BWSC**
 - Sewer Main Impacts – 18" near easterly abutment
 - Drainage Impacts – 60" Cast Iron near easterly abutment

Major Utilities – SFR Hybrid Throat Area



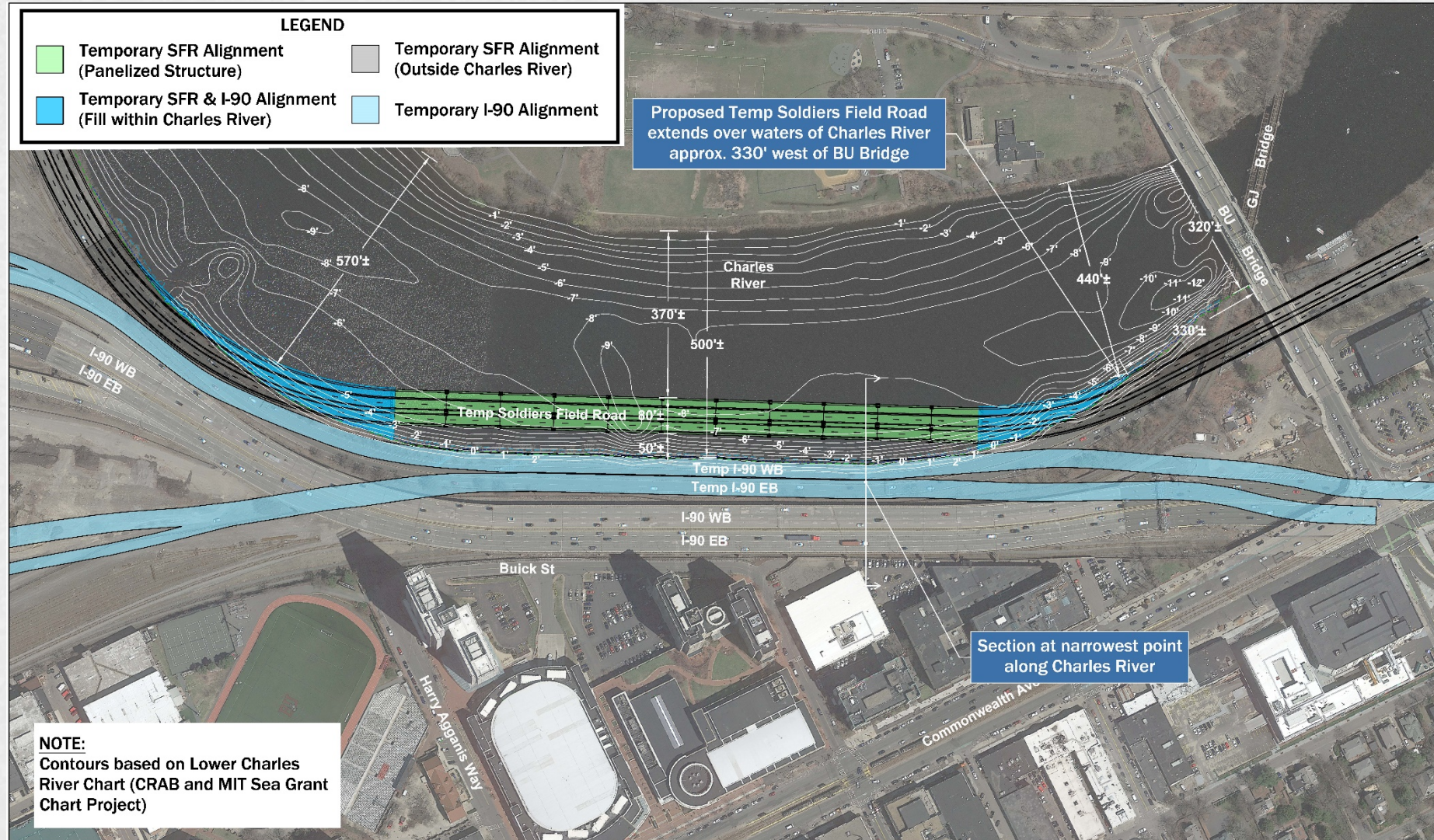
MWRA Sewer and Water Main Relocations



Project Elements

- Temporary Soldiers Field Road By-Pass

Temporary Soldiers Field Road By-Pass Plan



SFR Hybrid Throat Area Construction Staging Highlights

- Staging concepts are preliminary and several elements need further study/investigations including but not limited to:
 - Temporary Soldiers Field Road By-Pass/PDW Path on Trestle Structure
 - Sizing safe work zones for equipment and access
 - Increasing duration of 2 track Worcester Mainline services
 - Grand Junction Bridges over I-90 and SFR
 - SFR Viaduct transitions outside tangent portion of throat
 - Temporary I-90 alignments horizontal and vertical geometry
 - Major utility relocations upon completion of field investigations and continued coordination with utility owners
 - Overall construction durations by stage

Project Elements

— Charles River Bank/Park Treatment Alternatives

Riverbank Restoration/Reconstruction



BANK RECONSTRUCTION



1:1 SLOPE



BANK RESTORATION

SELECTED PLANTS FROM CHARLES RIVER VEGETATION MANAGEMENT PLAN



SERVICEBERRY
AMELANCHIER ARBOREA



JOE PYE WEED
EUTROCHUM PURPUREUM



SWAMP ROSE
ROSA PALUSTRIS



NANNYBERRY
VIBURNUM LENTAGO



WINTERBERRY
ILEX VERTICILLATA



MEADOWSWEET
FILIPENDULA ULMARIA



GREY GOLDENROD
SOLIDAGO NEMORALIS



WILD BERGAMOT
MONARDA FISTULOSA



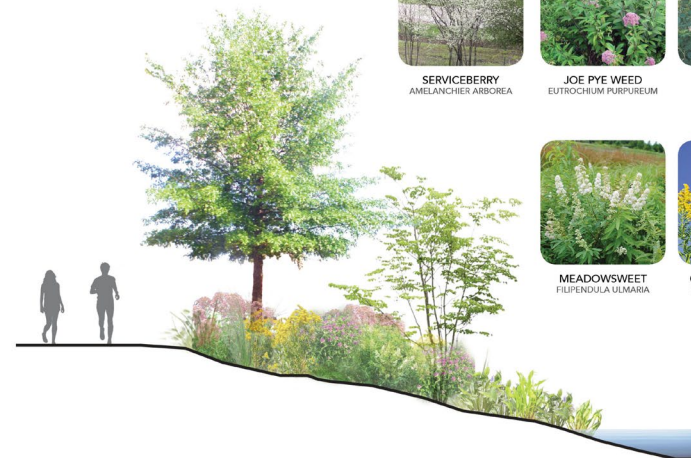
AMERICAN
WATER-WILLOW
JUSTICIA AMERICANA



PICKERELWEED
PONTEDERIA CORDATA



BLUE FLAG IRIS
IRIS VERSICOLOR



2:1 SLOPE

EB SFR Viaduct – View looking West (SFR Viaduct and PDW Path)



EB SFR Viaduct – View looking West (PDW Path)



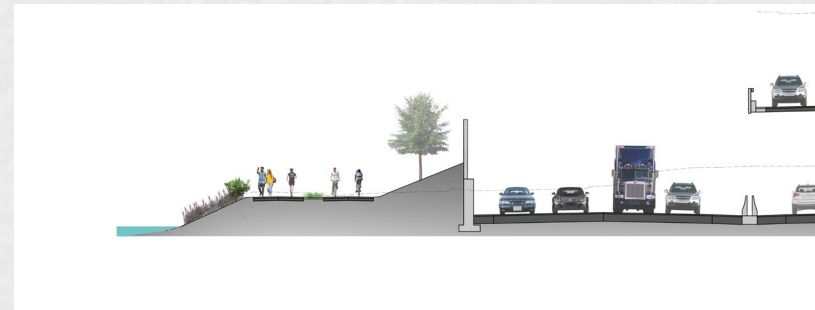
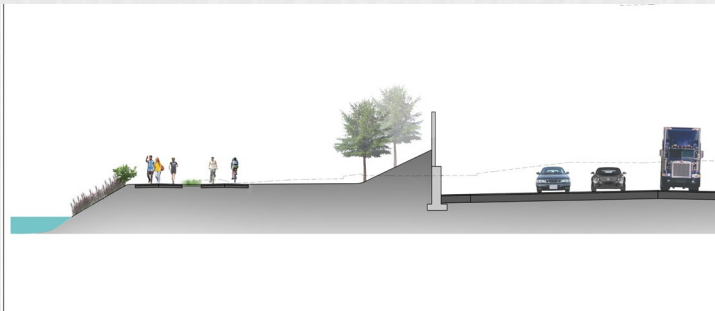
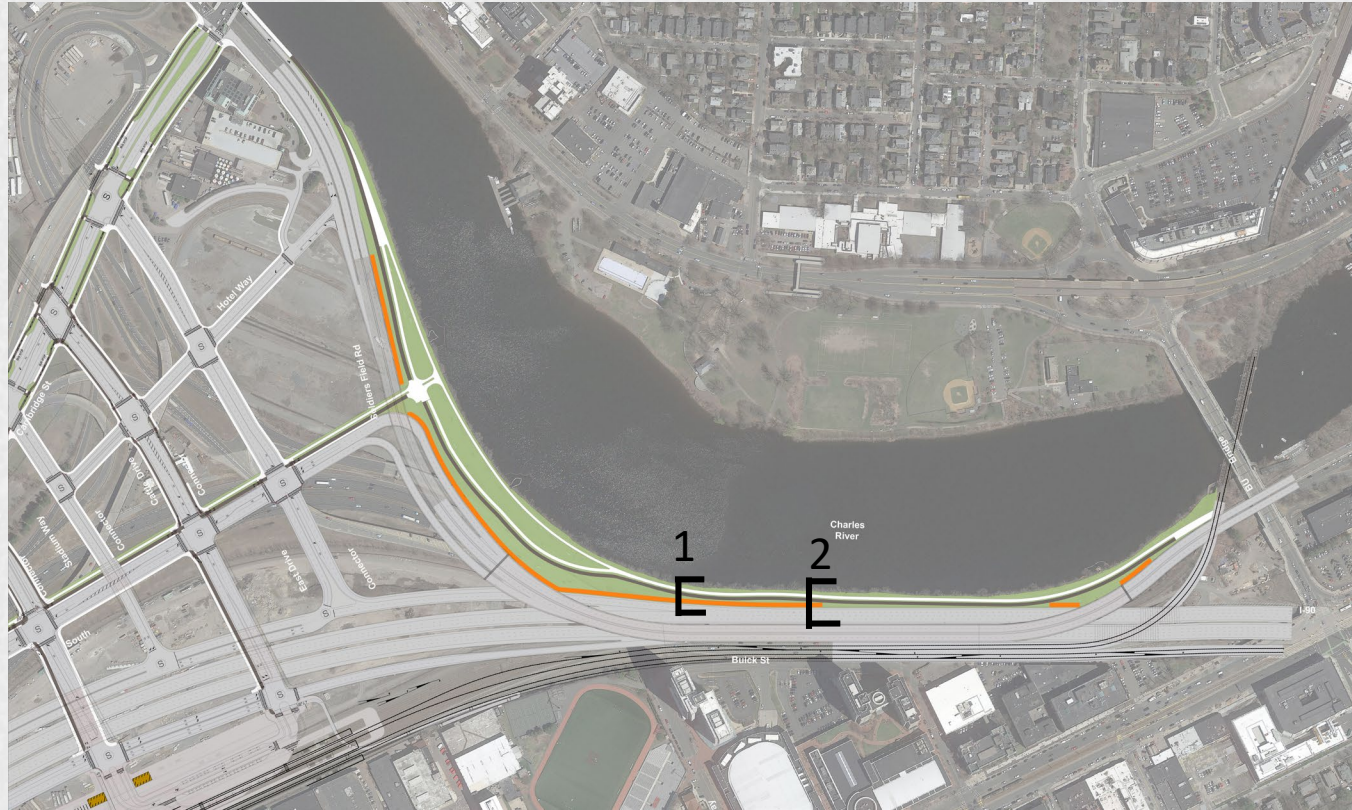
EB SFR Viaduct – View looking West (I-90 and SFR/GJR Viaducts)



EB SFR Viaduct – View looking East (PDW Path)



Berm Alternative



Berm Alternative



Perspective of a Wider Portion of the Throat



Perspective the Narrowest Portion of the Throat

Questions?