

**DRAFT**

Allston Multimodal Project  
Allston, Massachusetts  
February 2019

**Highway At-Grade Hybrid**

Figure 1 provides an overview graphic of I-90 Allston project configured as the Highway At-Grade Hybrid alternative. This places the proposed Soldiers' Field Road Viaduct over I-90 westbound, closer to the Charles River.



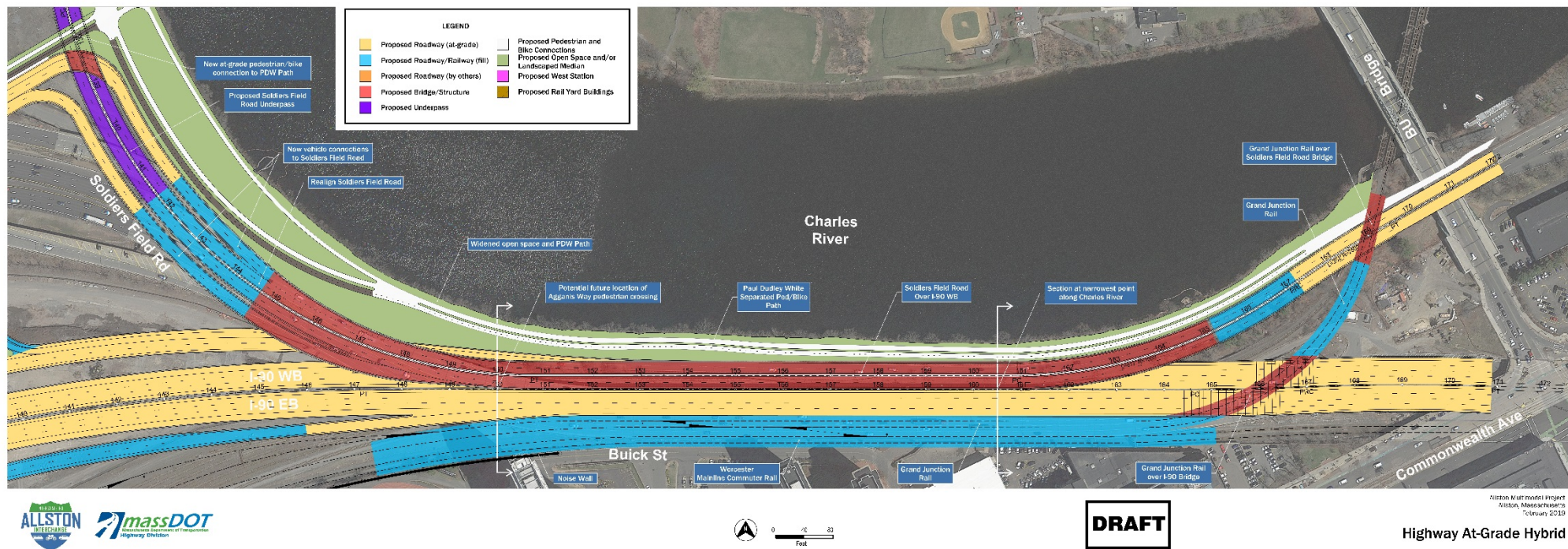
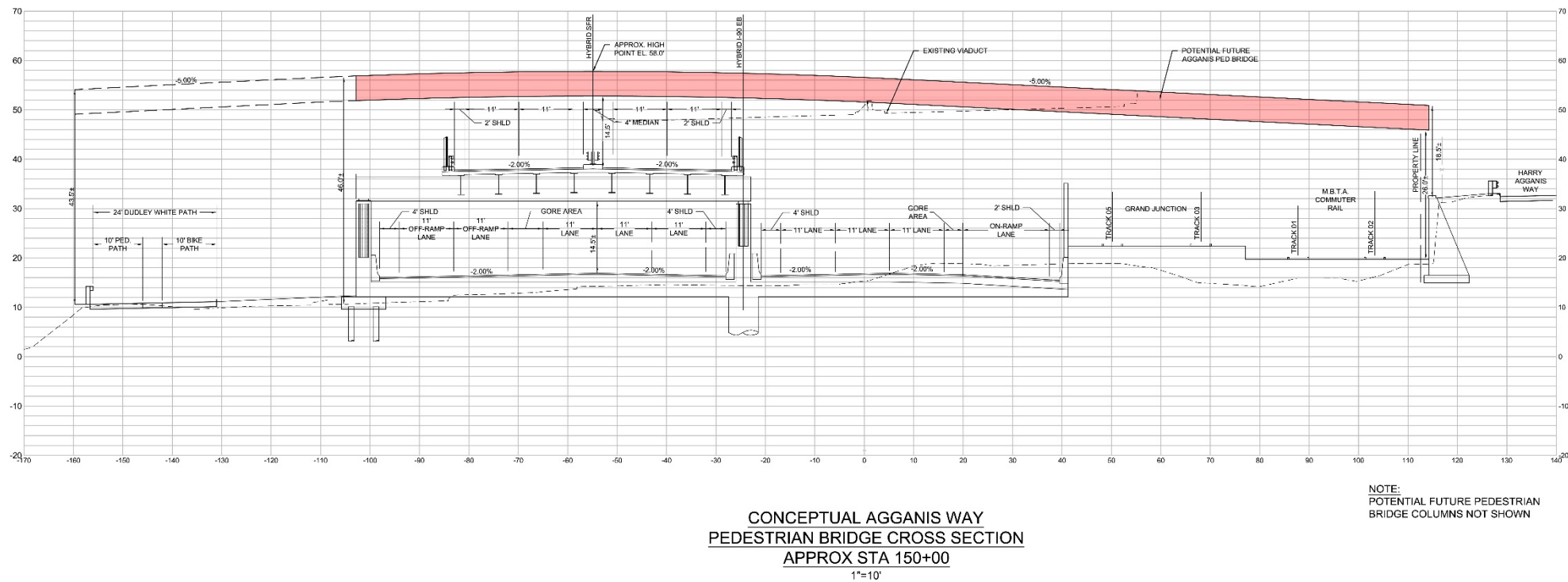


Figure 2 provides an zoomed-in detail graphic of I-90 Allston project configured as the Highway At-Grade Hybrid alternative. This image shows the “throat” section up close with the proposed Soldiers’ Field Road Viaduct over I-90 westbound, closer to the Charles River. This image also shows how this version can maintain dual treadways for cyclists and pedestrians almost up to the point where the Paul Dudley White Pathway goes under the Boston University Bridge.



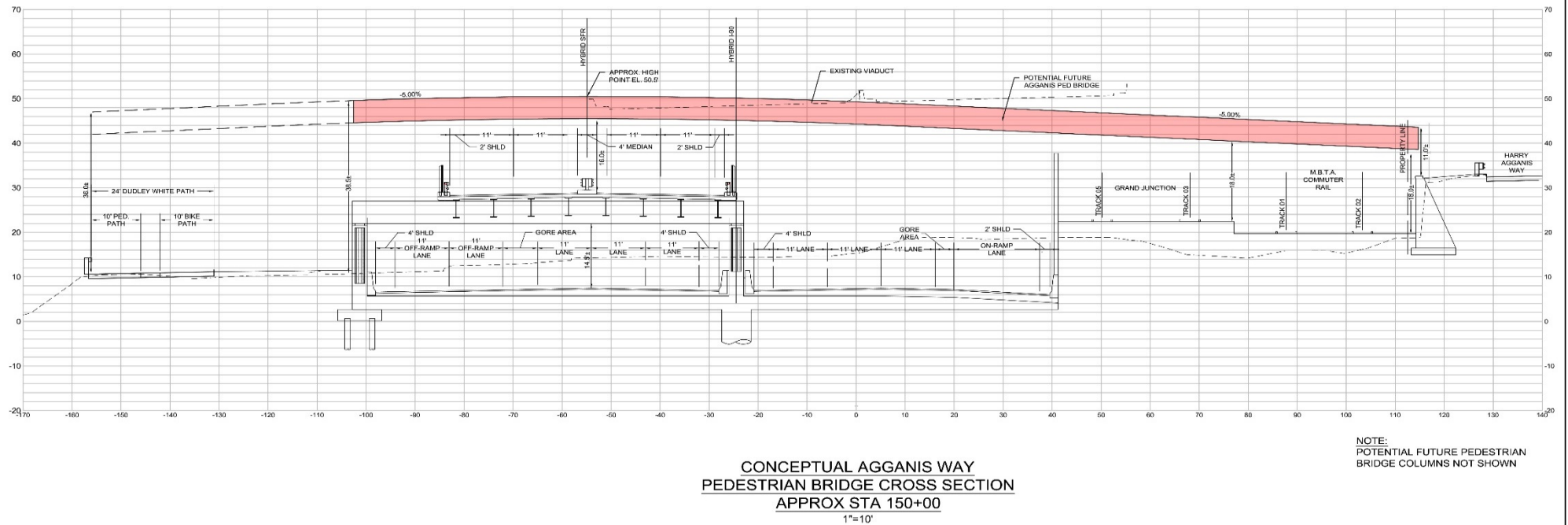


DRAFT

Allston Multimodal Project  
Allston, Massachusetts  
February 2019

## Hybrid - Potential Future Agganis Way Pedestrian Crossing (I-90 At-Grade Profile)

Figure 4 shows how the future Agganis Way pedestrian bridge would cross over, from right to left, the Worcester Main Line, Grand Junction Line, the eastbound lanes of I-90, and over the Soldiers' Field Road viaduct. Not shown is how the proposed pedestrian bridge would connect into the Paul Dudley White Pathway system. In this graphic, I-90 is placed at-grade without any additional lowering or "cutting." As such the pedestrian bridge must be higher to clear the Soldiers' Field Road viaduct.

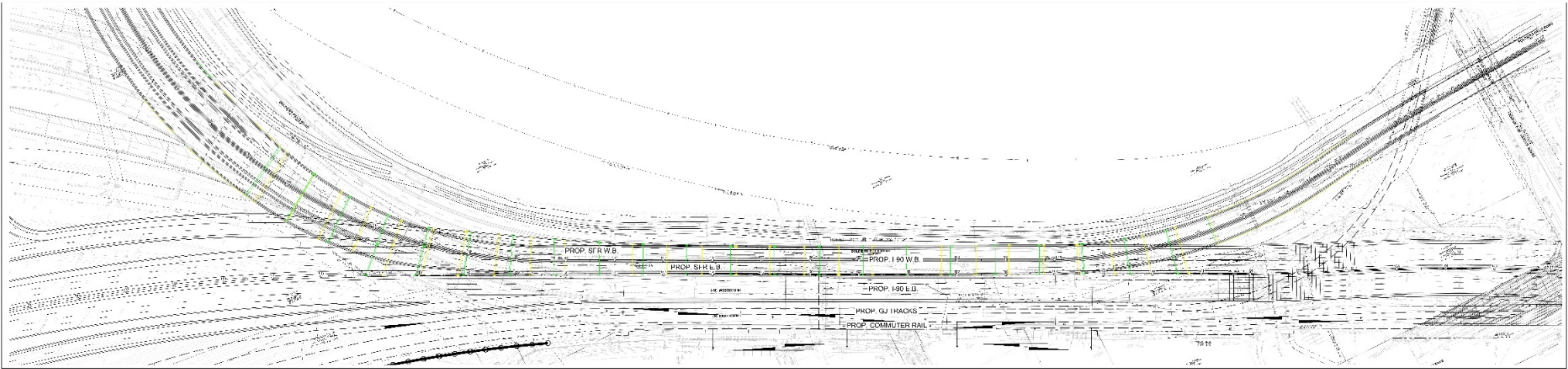


**DRAFT**

Aliston Multimodal Project  
Aliston, Massachusetts  
February 2019  
**Hybrid - Potential Future  
Agganis Way Pedestrian Crossing  
(I-90 Cut Profile)**

Figure 5 shows how the future Agganis Way pedestrian bridge would cross over, from right to left, the Worcester Main Line, Grand Junction Line, the eastbound lanes of I-90, and over the Soldiers' Field Road viaduct. Not shown is how the proposed pedestrian bridge would connect into the Paul Dudley White Pathway system. In this graphic, I-90 is "cut" or lowered. As such the pedestrian bridge can be lower than if I-90 is placed at grade with no cutting.





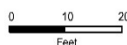
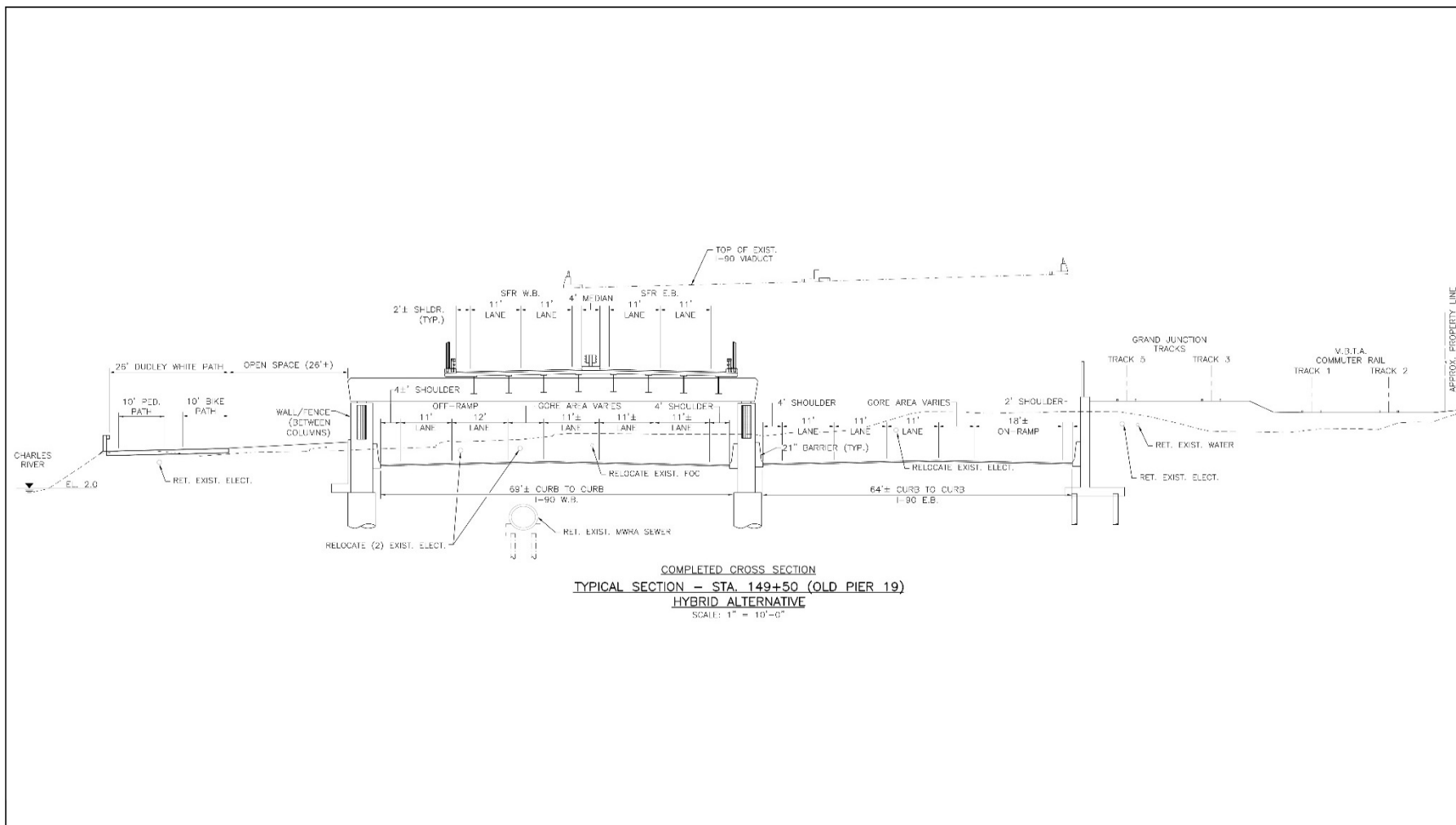
LEGEND  
 PROPOSED 70 FT. PIER SPACING  
 PROPOSED 50 FT. PIER SPACING



DRAFT

Highway At-Grade Hybrid  
 Concept SFR Viaduct  
 Foundation Layout

PROJECT NO. 10-001-001  
 DATE: 10/10/2010  
 BY: JAC/DC/S

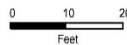
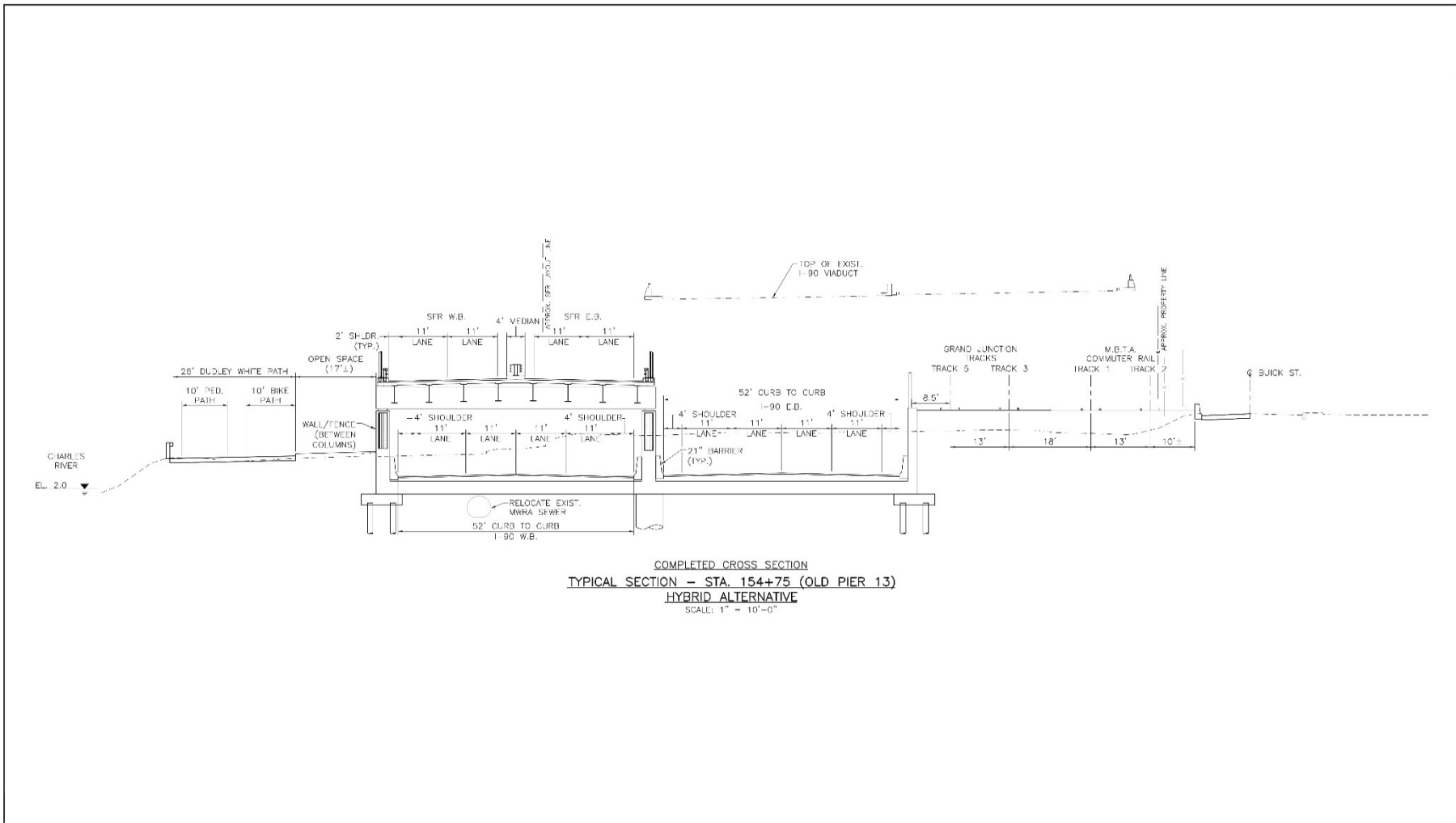


DRAFT

Highway At-Grade Hybrid

Allston Multimodal Project  
 Allston, Massachusetts  
 February 2019

Figure 6 shows a typical cross section of the Highway At-Grade Hybrid if Soldiers Field Road is placed over I-90 westbound. Left to right, the image shows a dual treadway Paul Dudley White Path, Soldiers' Field Road over I-90 westbound, I-90 eastbound open to the air, the Grand Junction Line, and the Worcester Main Line.



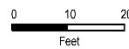
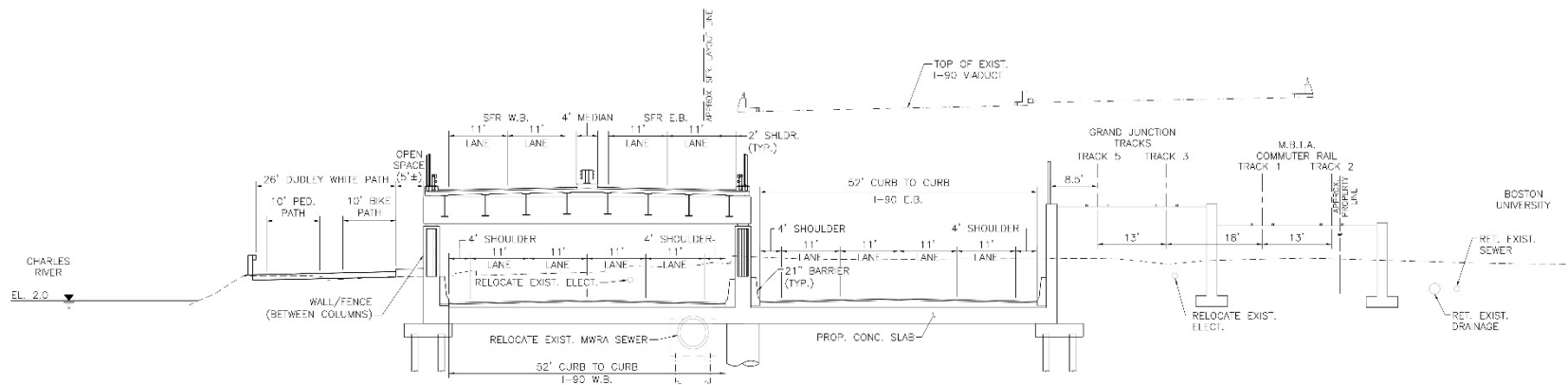
DRAFT

Highway At-Grade Hybrid

Allston Multimodal Project  
Allston, Massachusetts  
February 2019

Figure 7 shows a cross section, near Buick Street, of the Highway At-Grade Hybrid if Soldiers Field Road is placed over I-90 westbound. Left to right, the image shows a dual treadway Paul Dudley White Path, Soldiers' Field Road over I-90 westbound, I-90 eastbound open to the air, the Grand Junction Line, and the Worcester Main Line. As the cross section location moves east, towards downtown Boston, the open space buffer between the Paul Dudley White Pathway and the Soldiers' Field Road viaduct narrows.





DRAFT

Highway At-Grade Hybrid

Allston Multimodal Project  
Allston, Massachusetts  
February 2019

Figure 8 shows a cross section, near the Boston University Bridge, of the Highway At-Grade Hybrid if Soldiers Field Road is placed over I-90 westbound. Left to right, the image shows a dual treadway Paul Dudley White Path, Soldiers' Field Road over I-90 westbound, I-90 eastbound open to the air, the Grand Junction Line, and the Worcester Main Line.

As the cross section location moves east, towards downtown Boston, the open space buffer between the Paul Dudley White Pathway and the Soldiers' Field Road viaduct narrows.