



**I-90 ALLSTON INTERCHANGE**  
**A MULTIMODAL TRANSPORTATION PROJECT**  
**Task Force Meeting**  
March 12, 2025



# Zoom Controls



- Drop down menu to check microphone and speakers



- Ask a question and share comments; Alt+H



- Raise your hand - \*9 for users dialing in; Alt+Y



Live Transcript

- Closed captioning is automatically generated by ZOOM



- If you are unable to access the internet or are having technical problems, please call into the meeting at 305-224-1968, Meeting ID: 889 3699 8149



- Ask for support from the Virtual Public Involvement team



If you have trouble with the meeting technology during the presentation, please call:

1-888-799-9666



Unmute



Start Video



Q&A



Participants



Chat



Live Transcript



Reactions

## Public meeting notes and procedures:

### Notification

- While this virtual public meeting is not being recorded, the Massachusetts Department of Transportation may choose to retain and distribute images, reports, and/or the Q/A transcript.
- All parts of this meeting are considered public record.
- If you are not comfortable being part of the official record, please refrain from utilizing the Q/A feature, turn off your camera, and keep your microphone muted, or you may choose to excuse yourself from the meeting.

### Important notes

- Your microphone is automatically disabled upon entering the meeting.
- The meeting will be open to questions and answers at the end of the formal presentation, with opportunities to ask questions after each of the updates as well.
- Task Force members will be prioritized for questions and comments

**All questions and comments are welcome and appreciated, however we do request that you refrain from any disrespectful comments.**



## Notice of MassDOT's policy on diversity and civil rights:

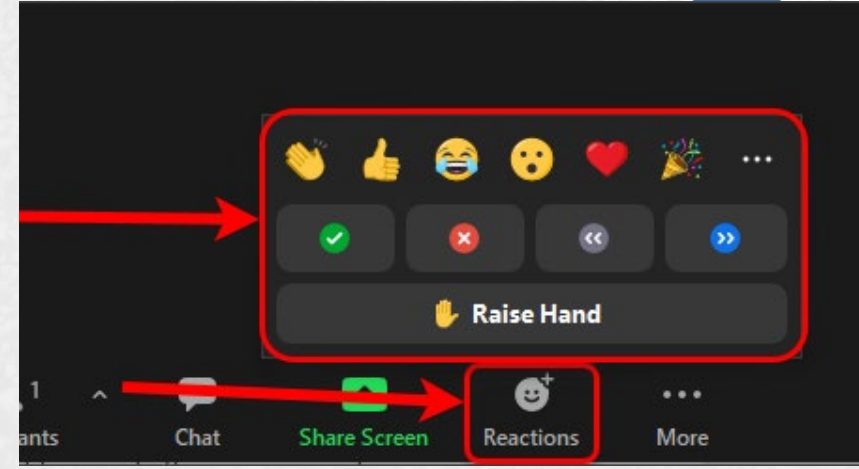
- All MassDOT activities, including public meetings, are free of discrimination.
- MassDOT complies with all federal and state civil rights requirements preventing discrimination based on sex, race, color, ancestry, national origin (limited English proficiency), religion, creed, gender, sexual orientation, gender identity or expression, or veteran's status.
- We welcome the diversity from across our entire service area. If you have any questions or concerns, please visit <https://www.mass.gov/nondiscrimination-in-transportation-program> to reach the Office of Diversity and Civil Rights.

**Thank you for joining our meeting. We appreciate your participation!**

# Share Your Questions and Comments



- Submit your questions and comments
- “Raise your hand” to be unmuted for verbal questions
- Please state your name before your question
- Please share only **1** question or comment at a time, limited to **2** minutes, to allow others to participate.
- To ask a question via phone, dial \*9 and the moderator will call out the last 4-digits of your phone number and unmute your audio when it is your turn.



Please be advised that all comments are subject to disclosure for public records, therefore use these functions for project-related business only.



# Today's Agenda

- **Welcome/Introductions**
- General Updates
- Project Schedule
- Layover
  - Overview: What is Layover?
  - Layover Analysis White Paper
  - Layover Concept Update and Discussion
- ~~Grand Junction Update~~
  - ~~Outage Schedule Reduction Approach (ABC/HU)~~
  - ~~Service Contingency Measures~~
- Next Steps

# Today's Agenda

- Welcome/Introductions
- **General Updates**
- Project Schedule
- Layover
  - Overview: What is Layover?
  - Layover Analysis White Paper
  - Layover Concept Update and Discussion
- ~~Grand Junction Update~~
  - ~~Outage Schedule Reduction Approach (ABC/HU)~~
  - ~~Service Contingency Measures~~
- Next Steps



# General Updates



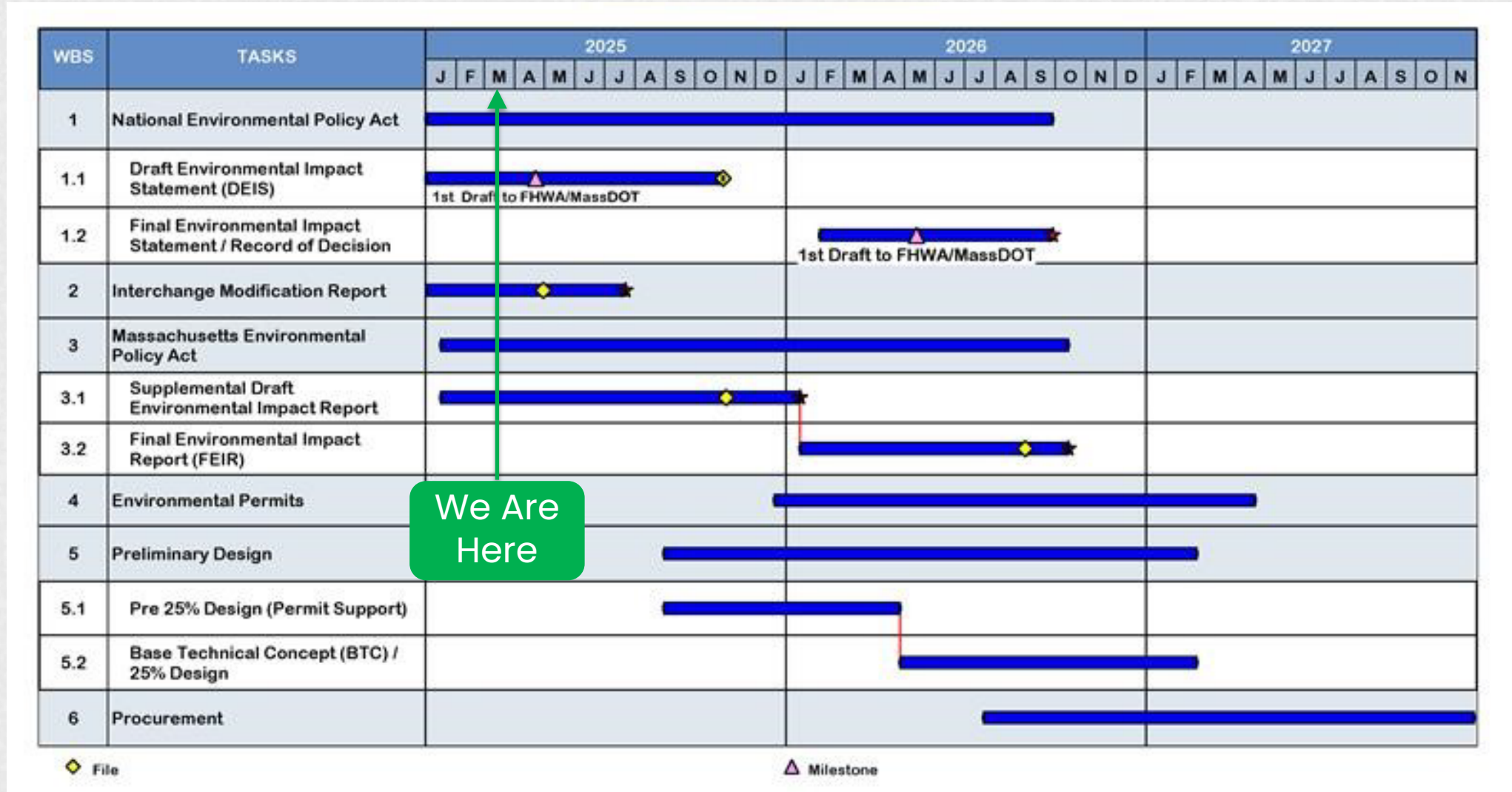
- Task Force Facilitator will now begin interacting with Stakeholders and engage at next Task Force meeting
- MassDOT Reviewing Harvard's Track Proposal
- Evaluating ABC/ HU Grand Junction Staging Alternatives
- Ongoing communication with Task Force members and elected officials
- Cambridge Street Bridge Preservation Project is moving forward



# Today's Agenda

- Welcome/Introductions
- General Updates
- **Project Schedule**
- Layover
  - Overview: What is Layover?
  - Layover Analysis White Paper
  - Layover Concept Update and Discussion
- ~~Grand Junction Update~~
  - ~~Outage Schedule Reduction Approach (ABC/HU)~~
  - ~~Service Contingency Measures~~
- Next Steps

# Project Schedule

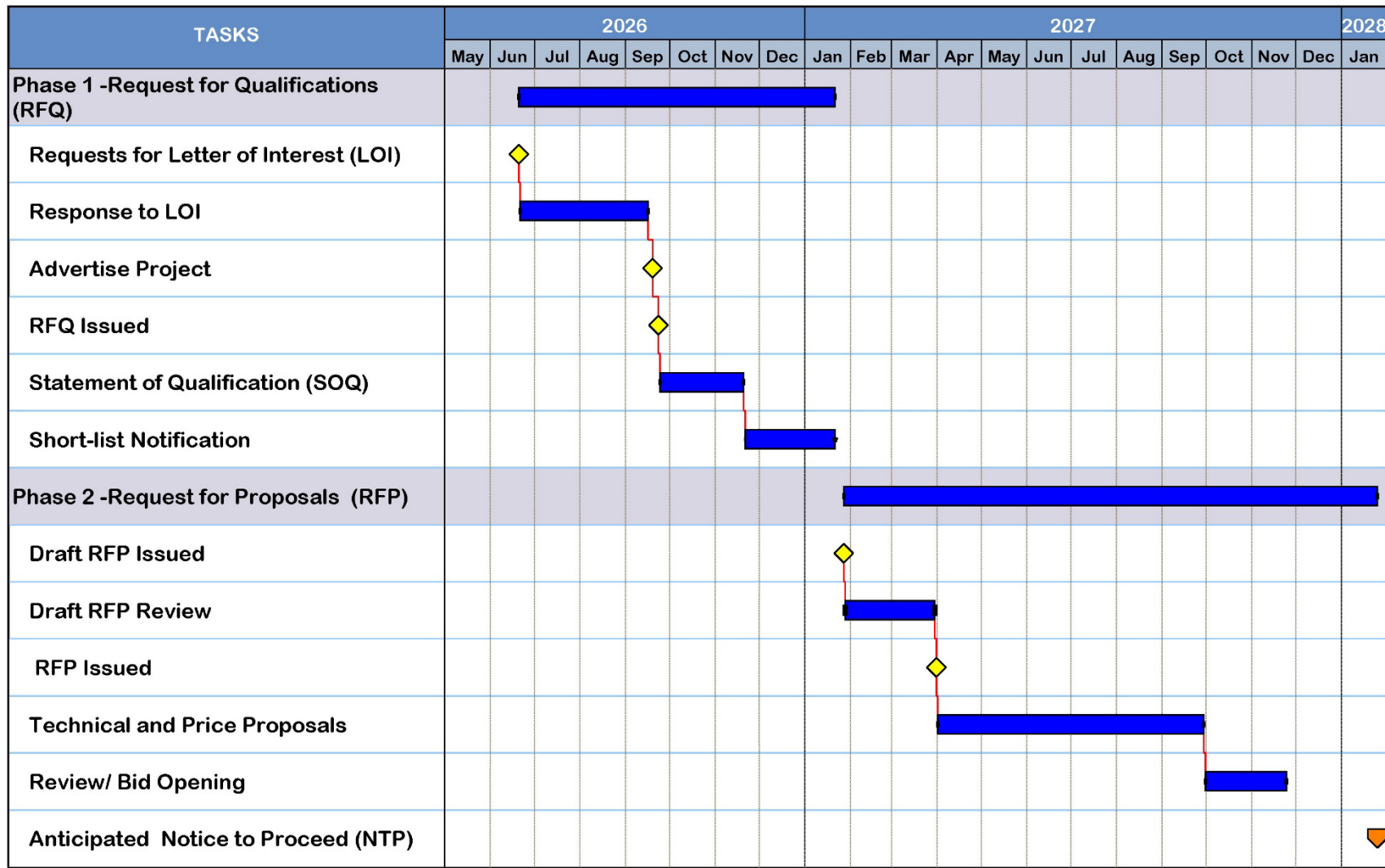


We Are Here





# Procurement Schedule



- Procurement start tied to NEPA
- Procurement timeline has been extended due to size and complexity of project
- Anticipated NTP January 2028

# Today's Agenda

- Welcome/Introductions
- General Updates
- Project Schedule
- **Layover**
  - **Overview: What is Layover?**
  - **Layover Analysis White Paper**
  - **Layover Concept Update and Discussion**
- ~~Grand Junction Update~~
  - ~~Outage Schedule Reduction Approach (ABC/HU)~~
  - ~~Service Contingency Measures~~
- Next Steps



# Overview: What is Layover?

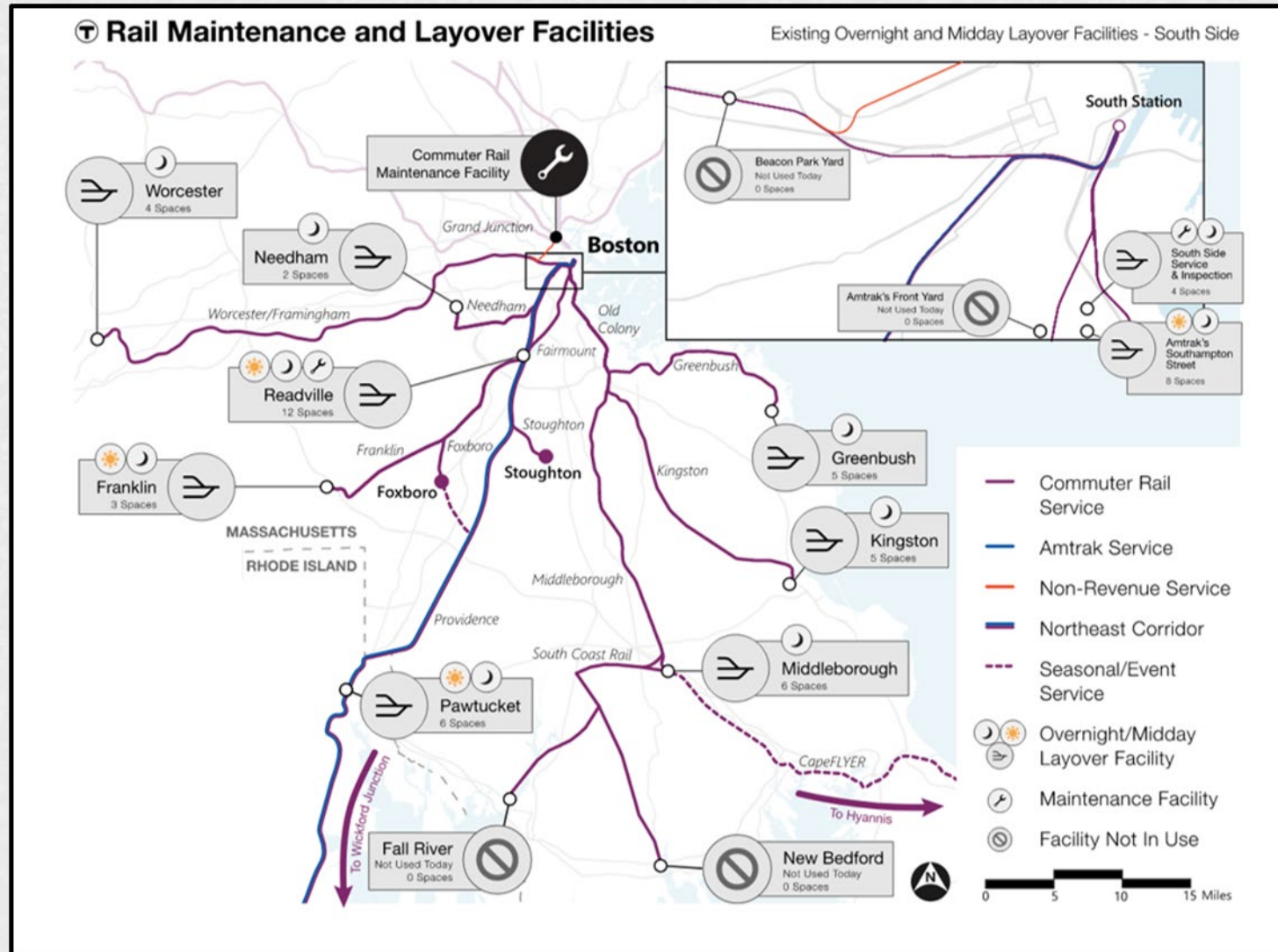
## What is layover?

- Layover facilities ensure passenger trains are ready to serve customers. These facilities allow railroad personnel to:
  - conduct safety inspections
  - carry out routine light maintenance
  - sanitize passenger coaches
  - Muster crew and conduct safety briefings
- Layover facilities are used for train storage during the midday or overnight
- In 2021, the MBTA shifted to all-day bi-directional service, which requires less storage at midday but far more space overnight. This is because a much larger future fleet will be in revenue service all day.

## Impacts of Layover Shortages

- Layover facility locations work best when well-balanced on both ends of the lines
- Insufficient or poorly balanced layover facilities can create operational issues
  - Backlogs for maintenance, service, and inspection
  - Inability to expand future fleet
  - Smaller fleet = less redundancy, reducing service reliability
  - Greater emissions due to more “deadhead” (non-revenue trips across system to move trains)
  - More personnel at a greater number of sites

# Overview: What is Layover?



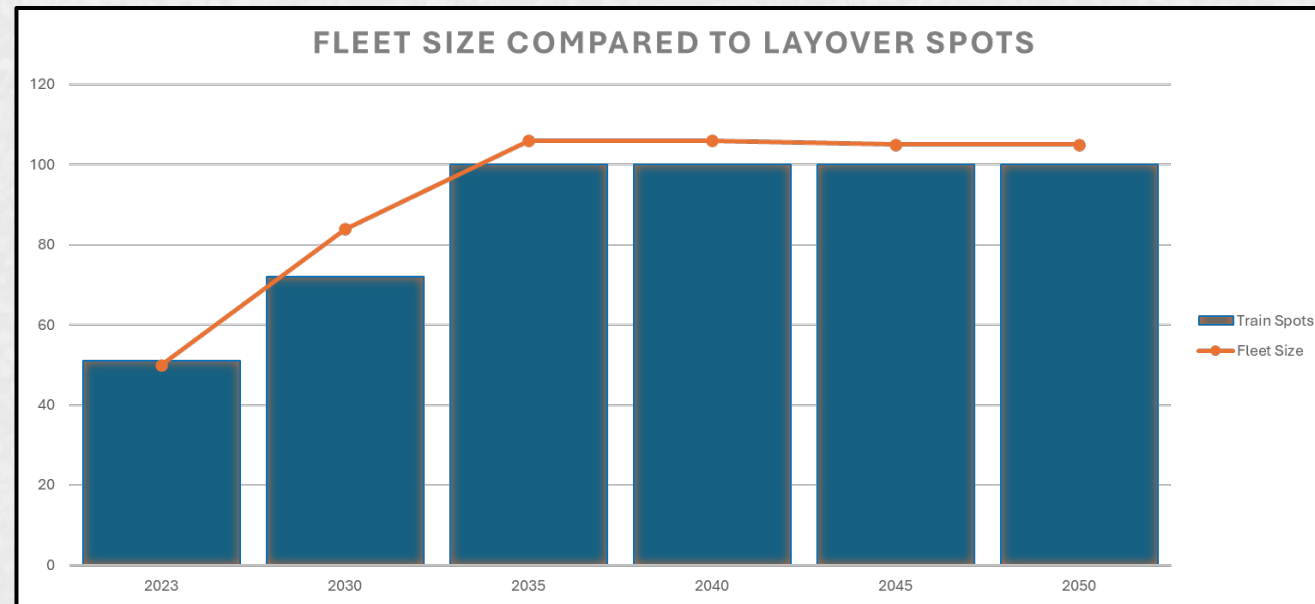
*Note: Analysis considers current layover locations and does not assume any site which is not currently owned by rail operators*



# MassDOT Layover Proposal Update and Discussion



- Southside System Layover Need Analysis White Paper Draft
  - Distributed to Task Force Members on 03/07
  - Conclusion: There will be a layover deficit across the southside over the next 25 years



# Two Track Layover Draft Concept

- Proposed for discussion by MassDOT in February
- Concept shows elements of a potential layout with precise locations and geometry that may evolve
- Concept requires:
  - Identifying and building out comparable layover space elsewhere in the City of Boston to replace two layover tracks in line with rail operators' rights at Beacon Park Yard

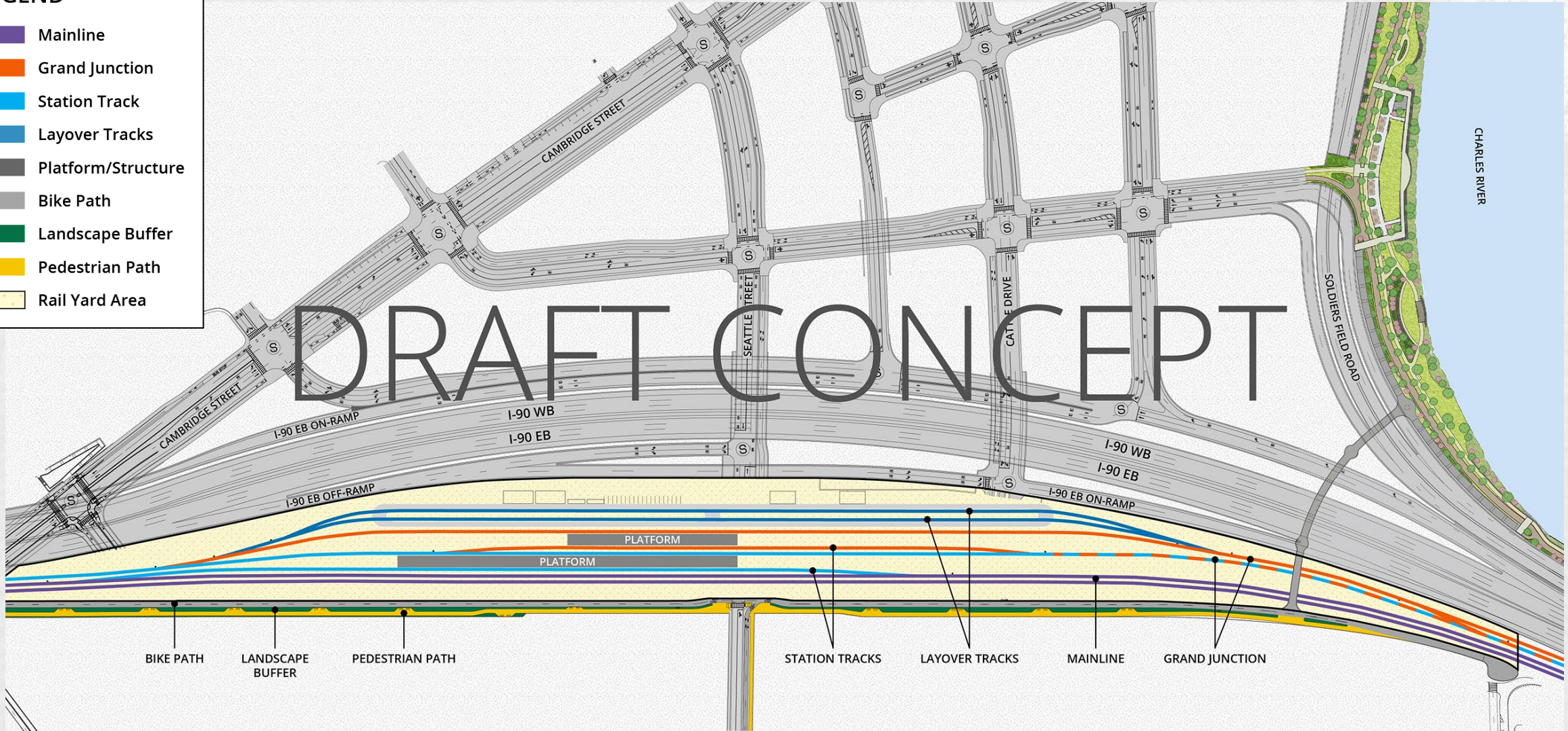


# Two Track Layover Draft Concept



**LEGEND**

- Mainline
- Grand Junction
- Station Track
- Layover Tracks
- Platform/Structure
- Bike Path
- Landscape Buffer
- Pedestrian Path
- Rail Yard Area



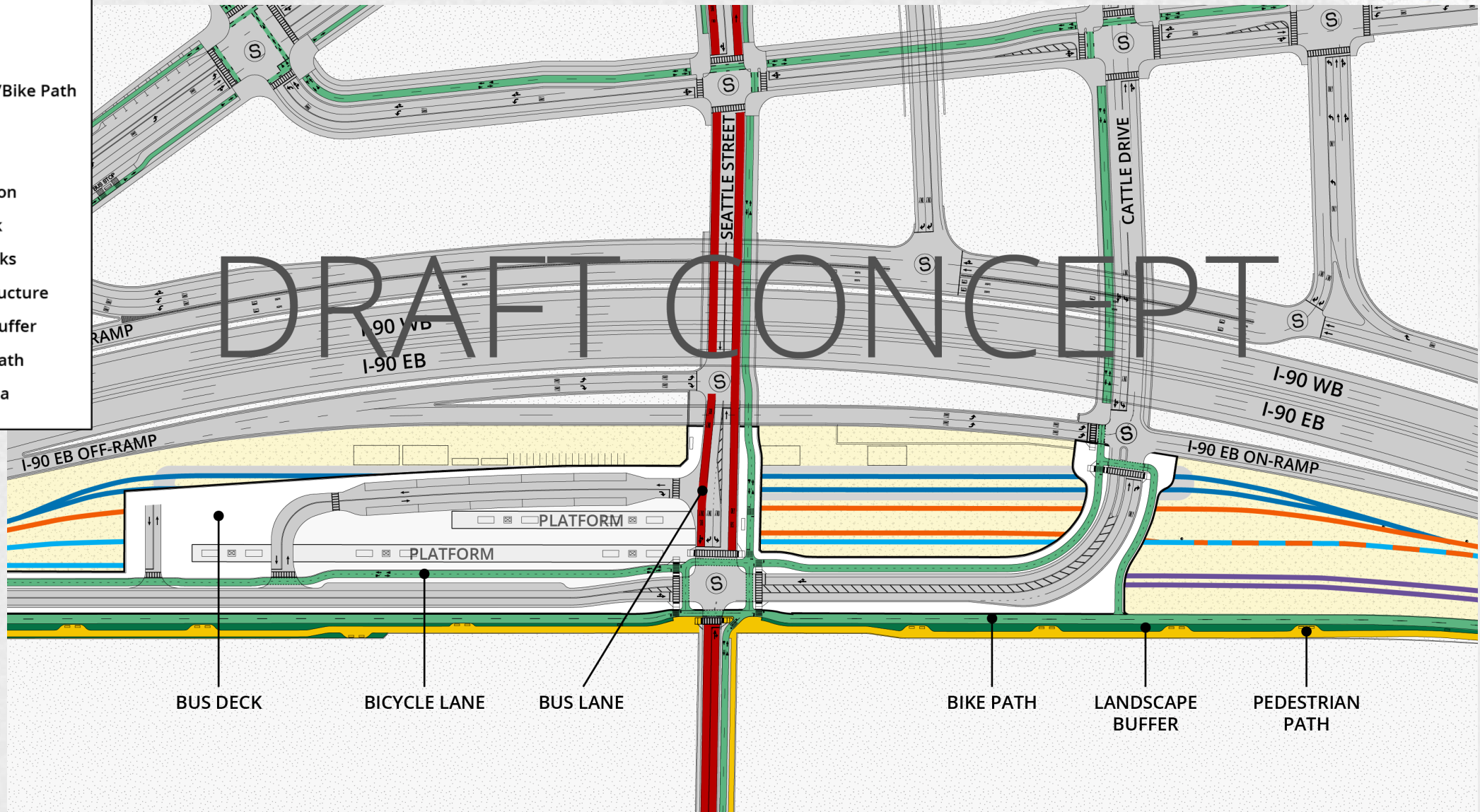


# Bus Deck Alternative for Station Shift



**LEGEND**

- Bus Lane
- Bicycle Lane/Bike Path
- Bus Deck
- Mainline
- Grand Junction
- Station Track
- Layover Tracks
- Platform/Structure
- Landscape Buffer
- Pedestrian Path
- Rail Yard Area



DRAFT – FOR DISCUSSION PURPOSES ONLY



# Today's Agenda

- Welcome/Introductions
- General Updates
- Project Schedule
- Layover
  - Overview: What is Layover?
  - Layover Analysis White Paper
  - Layover Concept Update and Discussion
- ~~Grand Junction Update~~
  - ~~Outage Schedule Reduction Approach (ABC/HU)~~
  - ~~Service Contingency Measures~~
- **Next Steps**

# Next Steps



20

- Proposed Future Task Force Meeting Dates
  - April 16
  - May 15
  - June 12
- Potential Topics at April Task Force
  - Grand Junction Update
  - Street network
  - Shoreline
  - Parkland
- Suggested Topics for Next Meeting?



# Thank You!

