

A black and white photograph of a large-scale construction project in an urban area. In the foreground, there are multiple sets of railroad tracks with a CSX locomotive and several freight cars. To the left, there are storage containers and construction equipment. In the background, a multi-lane highway interchange is under construction, with several lanes of road visible. Beyond the highway, a dense city skyline with various skyscrapers is visible under a clear sky.

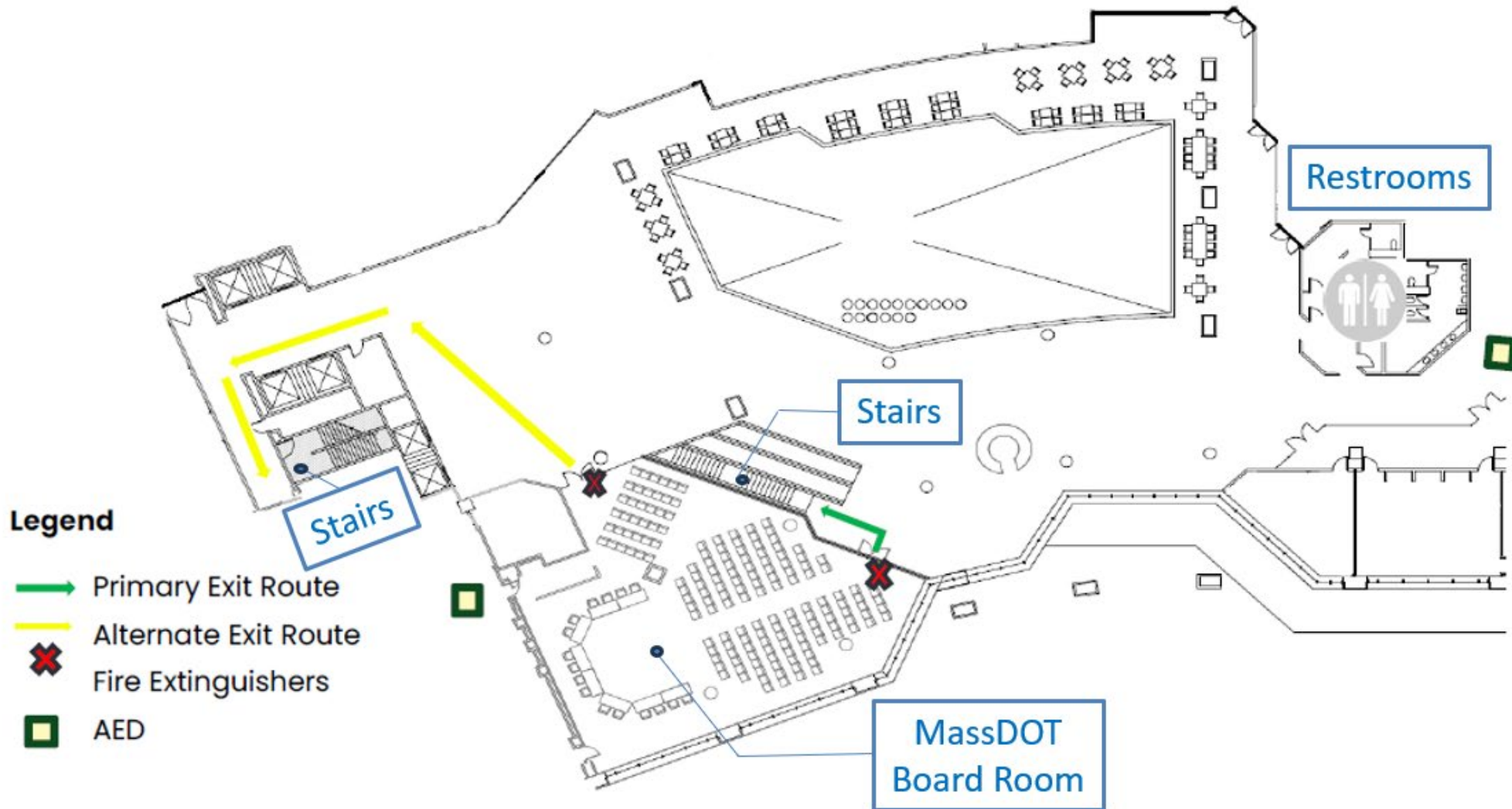
I-90 ALLSTON INTERCHANGE

A MULTIMODAL TRANSPORTATION PROJECT

Task Force Meeting

June 17, 2025

Safety Minute



Zoom Controls



- Drop down menu to check microphone and speakers



- Ask a question and share comments; Alt+H



- Raise your hand – *9 for users dialing in; Alt+Y



Live Transcript

- Closed captioning is automatically generated by ZOOM



- If you are unable to access the internet or are having technical problems, please call into the meeting at 305-224-1968, Meeting ID: 889 3699 8149



- Ask for support from the Virtual Public Involvement team



If you have trouble with the meeting technology during the presentation, please call:

1-888-799-9666



Unmute



Start Video



Q&A



Participants



Chat



Live Transcript



Reactions

Public meeting notes and procedures:

Notification

- While this virtual public meeting is not being recorded, the Massachusetts Department of Transportation may choose to retain and distribute images, reports, and/or the Q/A transcript.
- All parts of this meeting are considered public record.
- If you are not comfortable being part of the official record, please refrain from utilizing the Q/A feature, turn off your camera, and keep your microphone muted, or you may choose to excuse yourself from the meeting.

Important notes

- Your microphone is automatically disabled upon entering the meeting.
- The meeting will be open to questions and answers at the end of the formal presentation, with opportunities to ask questions after each of the updates as well.
- Task Force members will be prioritized for questions and comments

All questions and comments are welcome and appreciated, however we do request that you refrain from any disrespectful comments.

Notice of MassDOT's policy on diversity and civil rights:

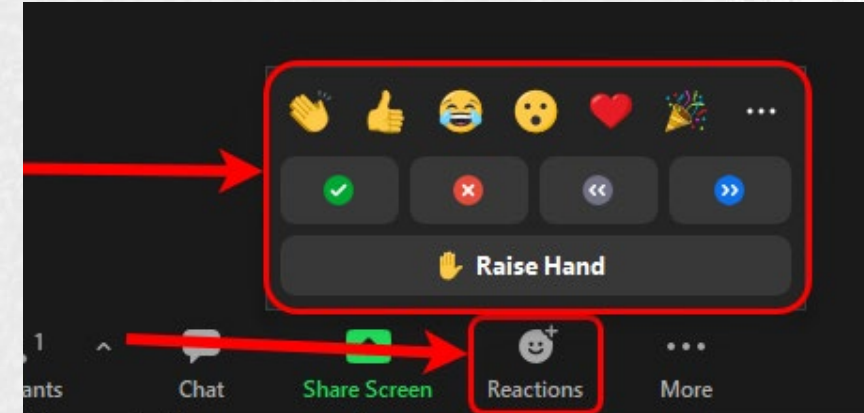
- All MassDOT activities, including public meetings, are free of discrimination.
- MassDOT complies with all federal and state civil rights requirements preventing discrimination based on sex, race, color, ancestry, national origin (limited English proficiency), religion, creed, gender, sexual orientation, gender identity or expression, or veteran's status.
- We welcome the diversity from across our entire service area. If you have any questions or concerns, please visit <https://www.mass.gov/nondiscrimination-in-transportation-program> to reach the Office of Diversity and Civil Rights.

Thank you for joining our meeting. We appreciate your participation!

Share Your Questions and Comments



- Submit your questions and comments
- “Raise your hand” to be unmuted for verbal questions
- Please state your name before your question
- Please share only **1** question or comment at a time, limited to **2** minutes, to allow others to participate.
- To ask a question via phone, dial *9 and the moderator will call out the last 4-digits of your phone number and unmute your audio when it is your turn.



Please be advised that all comments are subject to disclosure for public records, therefore use these functions for project-related business only.

Today's Agenda

- **Welcome/Introductions**
- Layover Update
- MBTA, MassDOT Compass Rail and Amtrak Operations
- Rail Components
- West Station Bus Concourse
- Next Steps

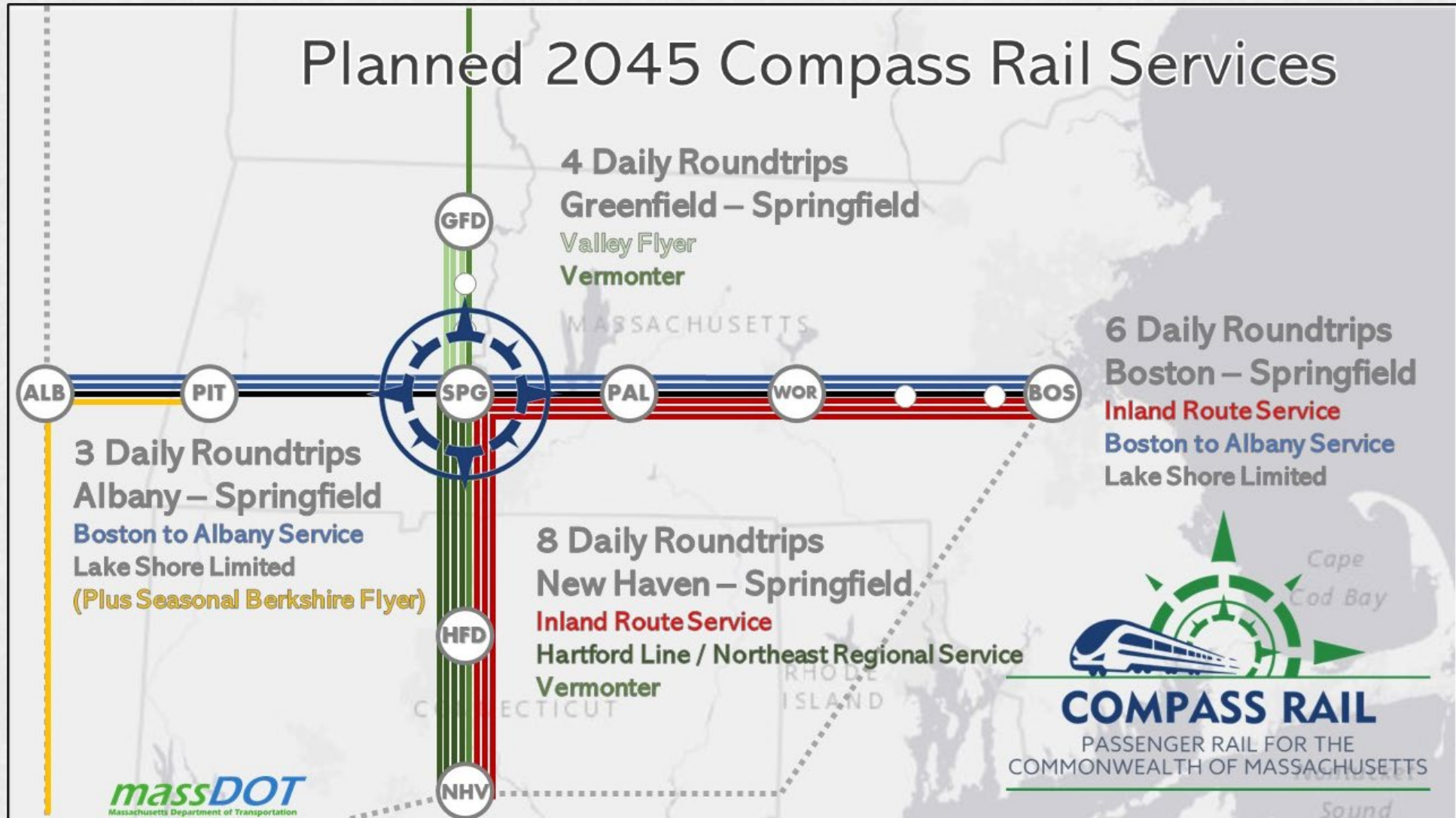
Today's Agenda

- Welcome/Introductions
- **Layover Update**
- MBTA, MassDOT Compass Rail and Amtrak Operations
- Rail Components
- West Station Bus Concourse
- Next Steps

Today's Agenda

- Welcome/Introductions
- Layover Update
- **MBTA, MassDOT Compass Rail and Amtrak Operations**
- Rail Components
- West Station Bus Concourse
- Next Steps

2045 Compass Rail Vision – Service Enhancement and Expansion



Snapshot: Framingham/Worcester Line Investments



- Speed restriction removal
 - Improved tracks to raise maximum authorized speed from Lansdowne to Auburndale
- Worcester Union Station Platform Rebuild (Under construction. Target: 2025)
 - Fully accessible
 - Will allow two trains at a time on platform
- Framingham/Worcester “30-30” Service (Target: 2026)
 - All-day, 30-minute “Zonal express” bi-directional service to Worcester
 - All-day, 30-minute local bi-directional service to Framingham
 - Requisite track improvements funded with \$20 million in Fair Share funds
- Framingham/Worcester Station Improvements (On-going)
 - Extensive capital upgrades to upgrade several stations, improving accessibility and reducing dwell times
 - Example: Natick Center Station Accessibility Improvements
 - Future priorities are Wellesley Square and Newtonville stations



Train Movements through the Project Area

- Dramatic increases in rail service are being planned on routes that will **utilize the Worcester Main Line's infrastructure**
 - Future MBTA revenue movements will be evenly split between Framingham local trains **that will serve West Station** and Worcester zonal express trains that **will not serve West Station**.
 - MassDOT will inaugurate Compass Rail in 2030 and will run 4 trains per day by 2035
- Once re-opened, Grand Junction will **continue to be used** for non-revenue maintenance movements

Operator	Today	2035	Change
MBTA (Revenue)	55	160	+105
Amtrak (Revenue)	2	2	--
Compass Rail (Revenue)	0	4	+4
Maintenance Movements (Non-Revenue)	2	2	--
Total Trains per day	59	168	+109

Today's Agenda



- Welcome/Introductions
- Layover Update
- MBTA, MassDOT Compass Rail and Amtrak Operations
- **Rail Components**
 - **DEIS Approach Overview**
 - **Design Considerations**
 - **Layout**
- West Station Bus Concourse
- Next Steps

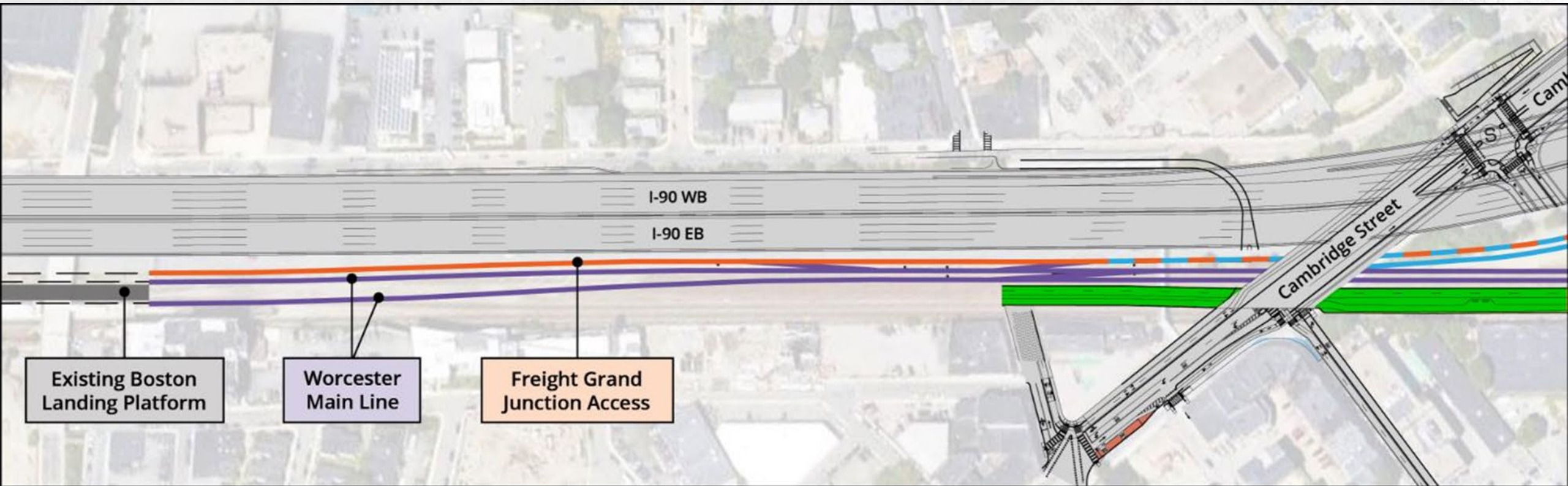
Rail Components

- Design Considerations
 - Existing Conditions
 - 2 Worcester Main Line Tracks
 - 1 Grand Junction Tracks
 - Build Alternative
 - 2 Worcester Main Line Tracks
 - 2 Grand Junction Tracks
 - 2 West Station Tracks
 - 4 Layover Tracks



Rail Components- West of Cambridge St

- Western Project Limits



Western Project Area

Legend

Worcester Main Line

Grand Junction Tracks

West Station Tracks

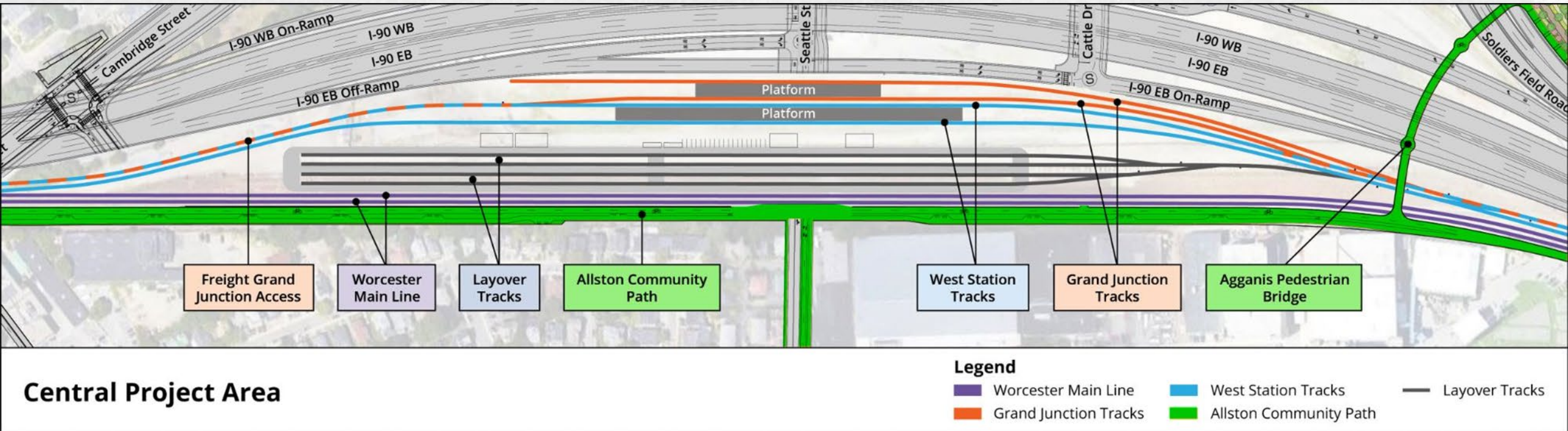
Allston Community Path

 Existing Track

Rail Components–West Station/Beacon Park Yard



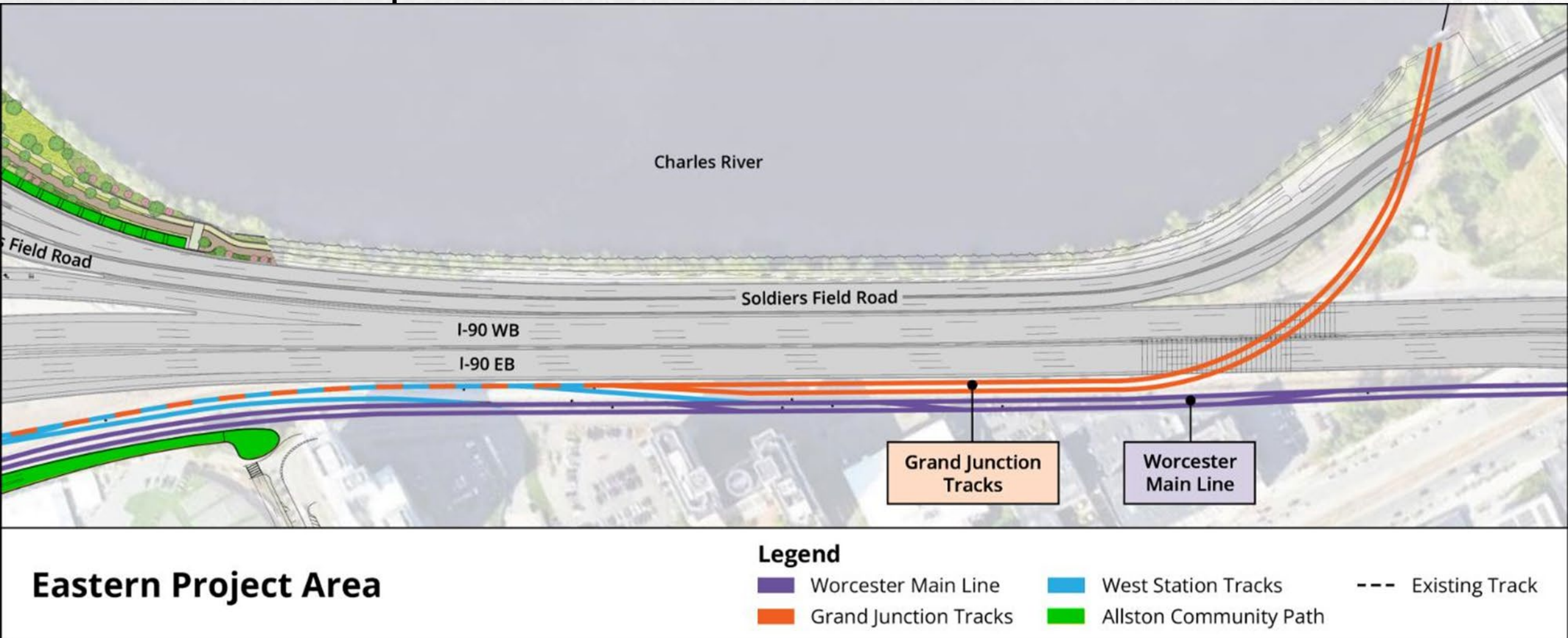
- Central Project Limits



Rail Components – East of Beacon Park Yard



- Eastern Project Limits

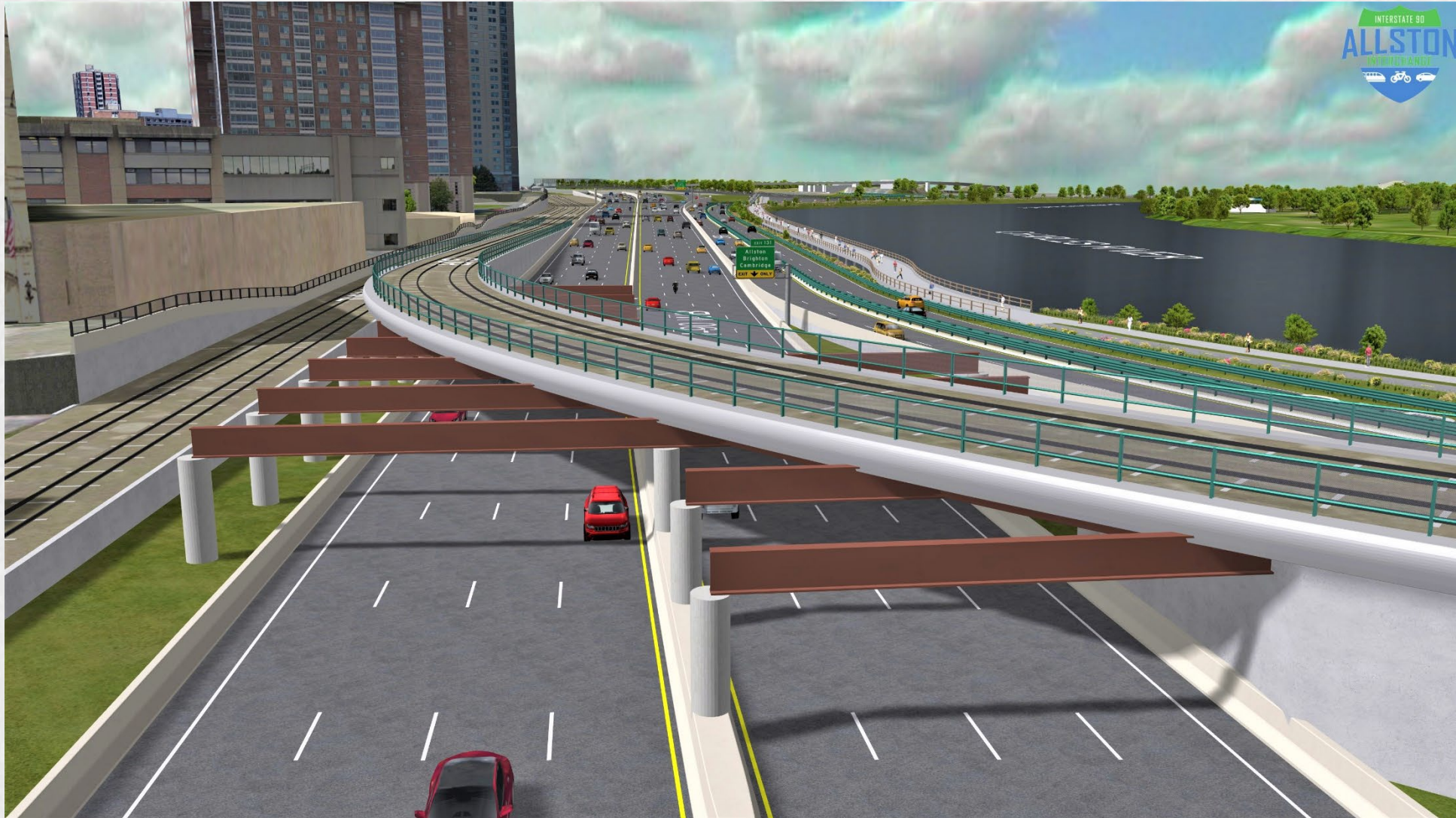


Eastern Project Area

Rail Components – East of Beacon Park Yard



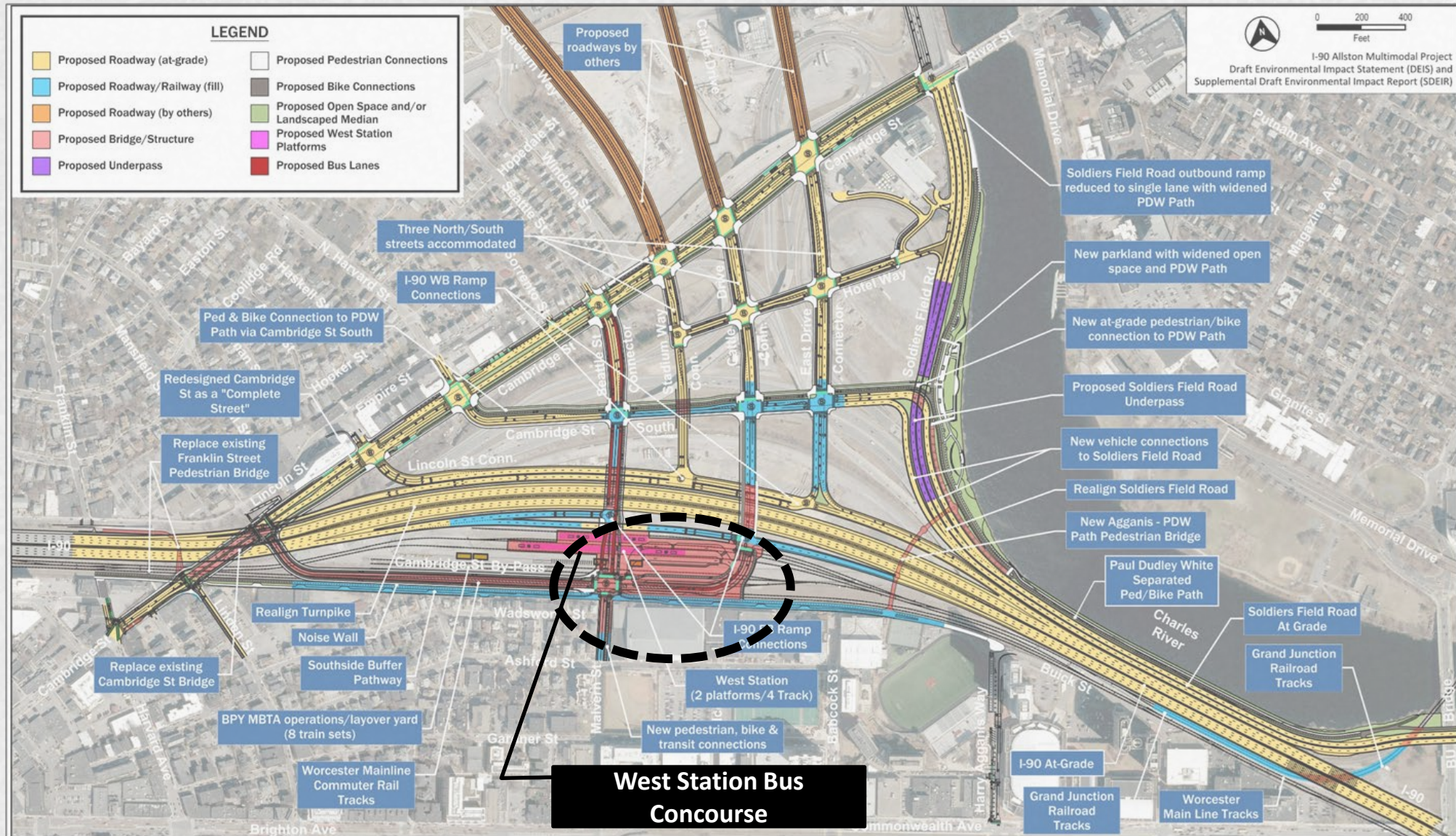
Rail Components – East of Beacon Park Yard



Today's Agenda

- Welcome/Introductions
- Layover Update
- MBTA, MassDOT Compass Rail and Amtrak Operations
- Rail Components
- **West Station Bus Concourse**
 - **Service and Design Assumptions**
 - **Layout**
- Next Steps

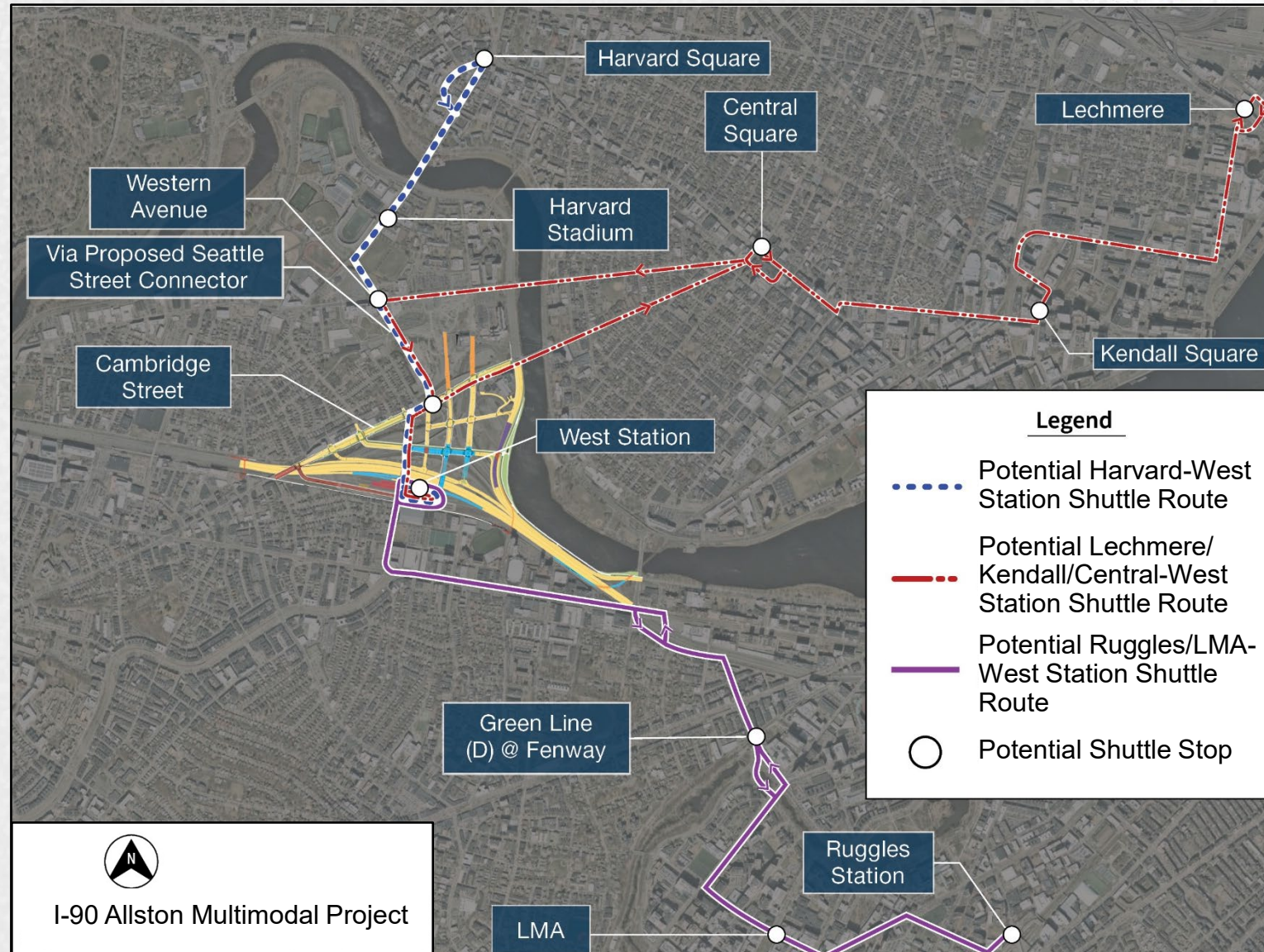
West Station Bus Concourse



West Station Bus Operational Assumptions

- Assumes three potential shuttle routes, using 40-foot transit buses
- Assumes frequencies for each route:
 - AM Peak: Every 5 Min.
 - Midday: Every 15 Min.
 - PM Peak: Every 5 Min.
 - Nighttime: Every 20 Min
- Requires 6 berths at West Station

Note: Operator for these potential shuttle route assumptions is not determined or committed at this time and not proposed as part of the Project.

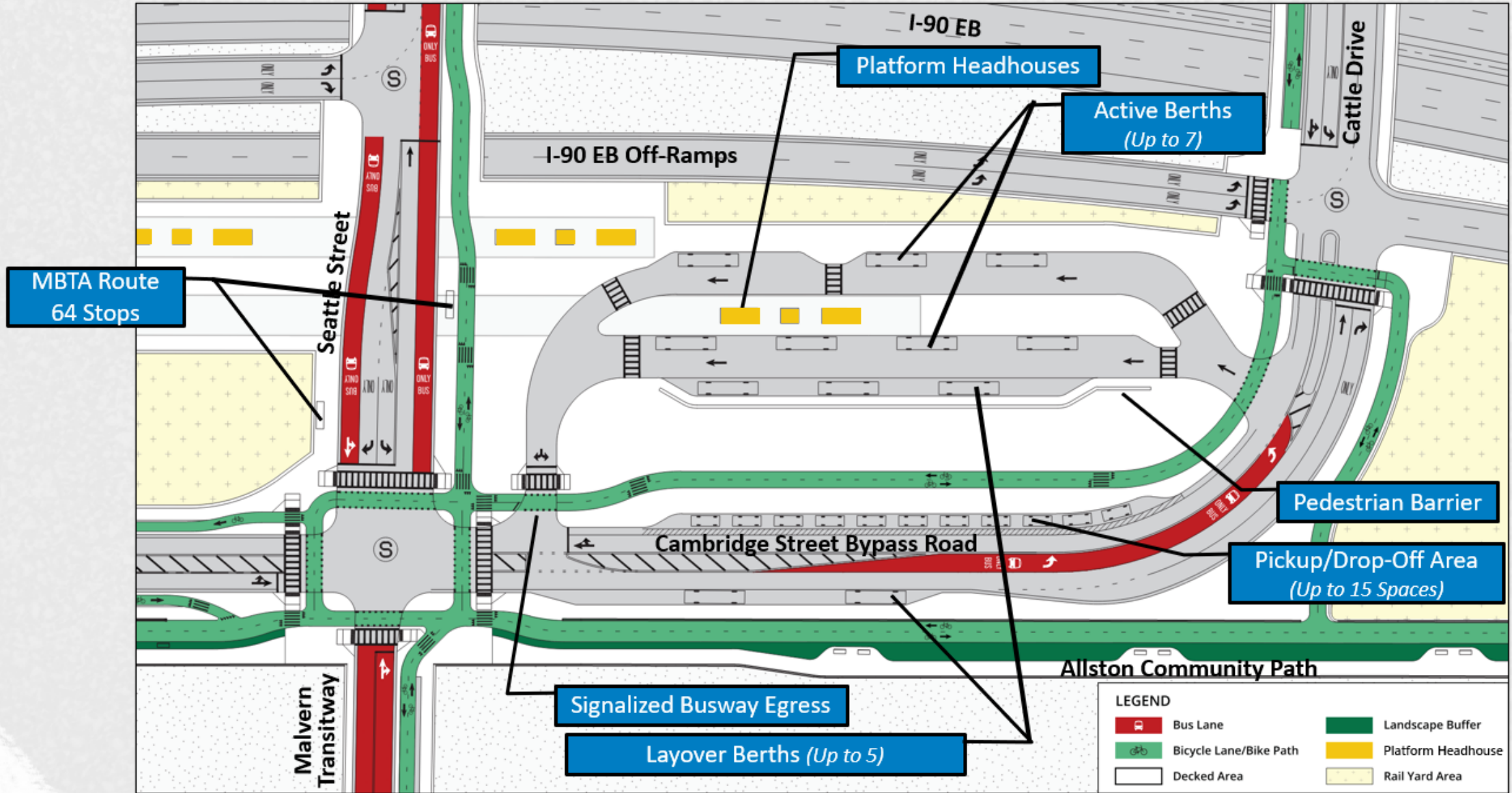


West Station Bus Concourse Design Assumptions

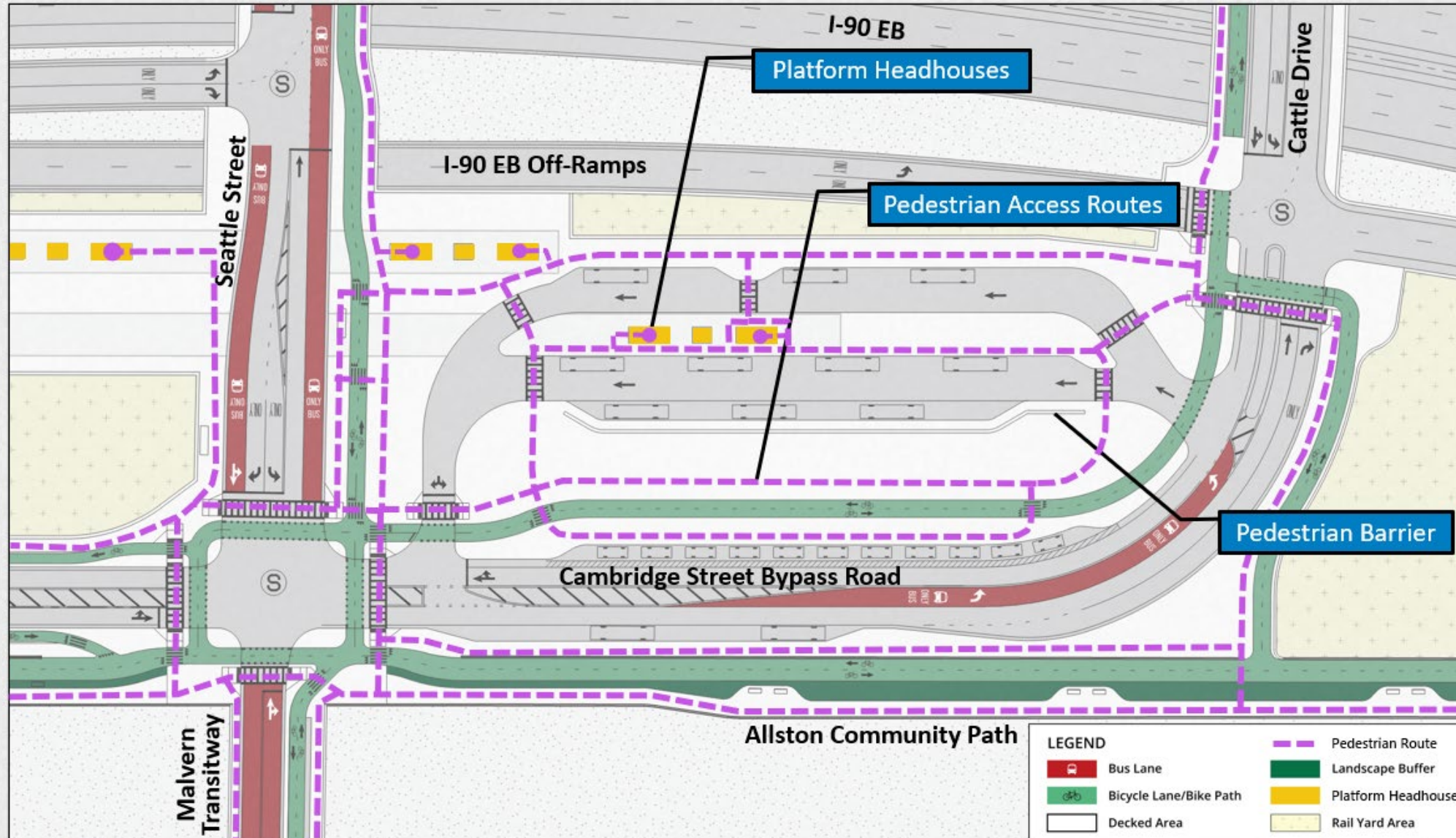


- Assumes 6 active berths
- Allow for independent operations of each berth (buses able to pull in/out independently of one another)
- Meet standard busway dimensional criteria
- MBTA Route 64 to stop along Seattle Street

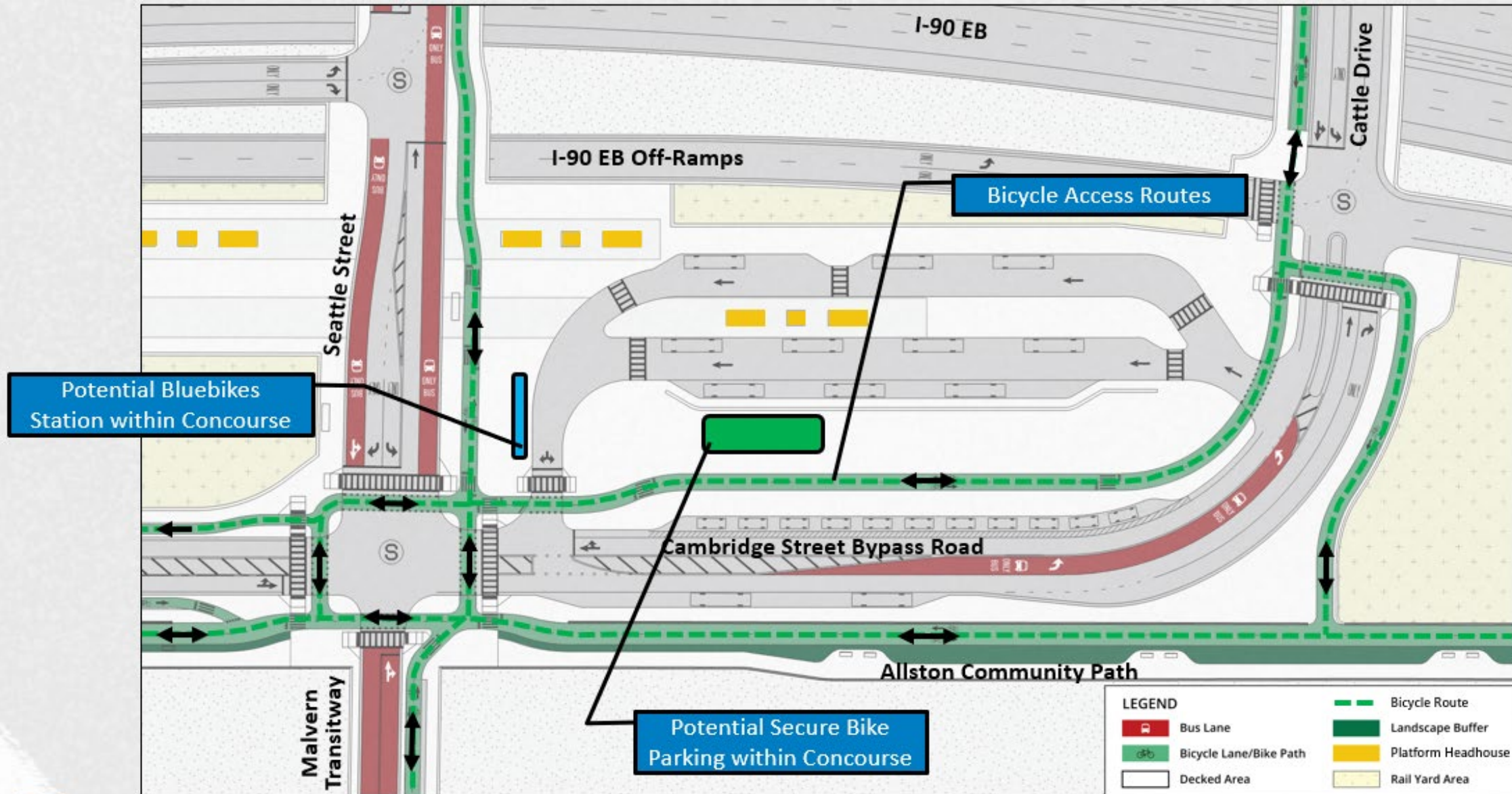
Bus Concourse Concept (Parallel Busway)



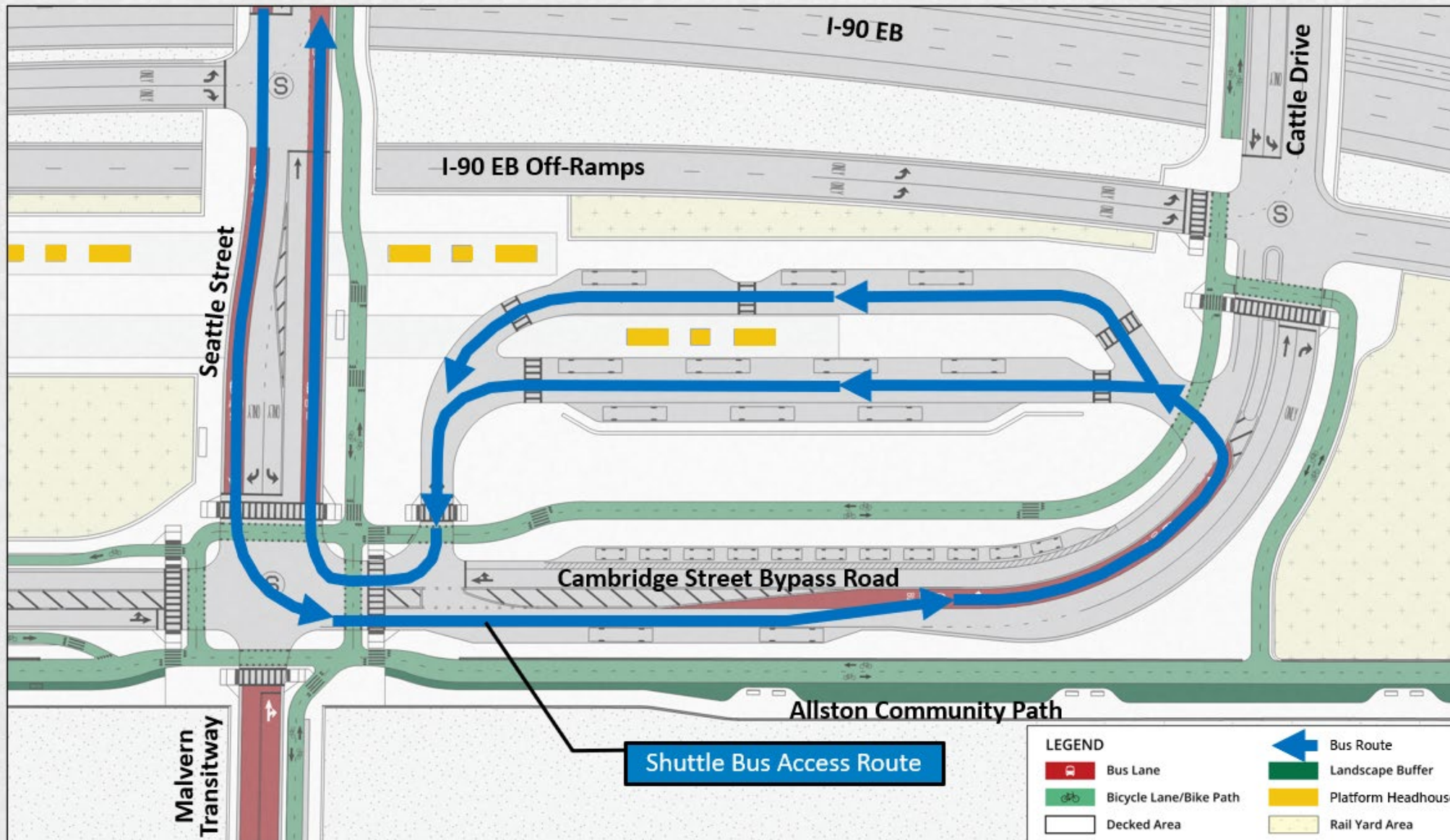
Bus Concourse Pedestrian Routes



Bus Concourse Bicycle Routes



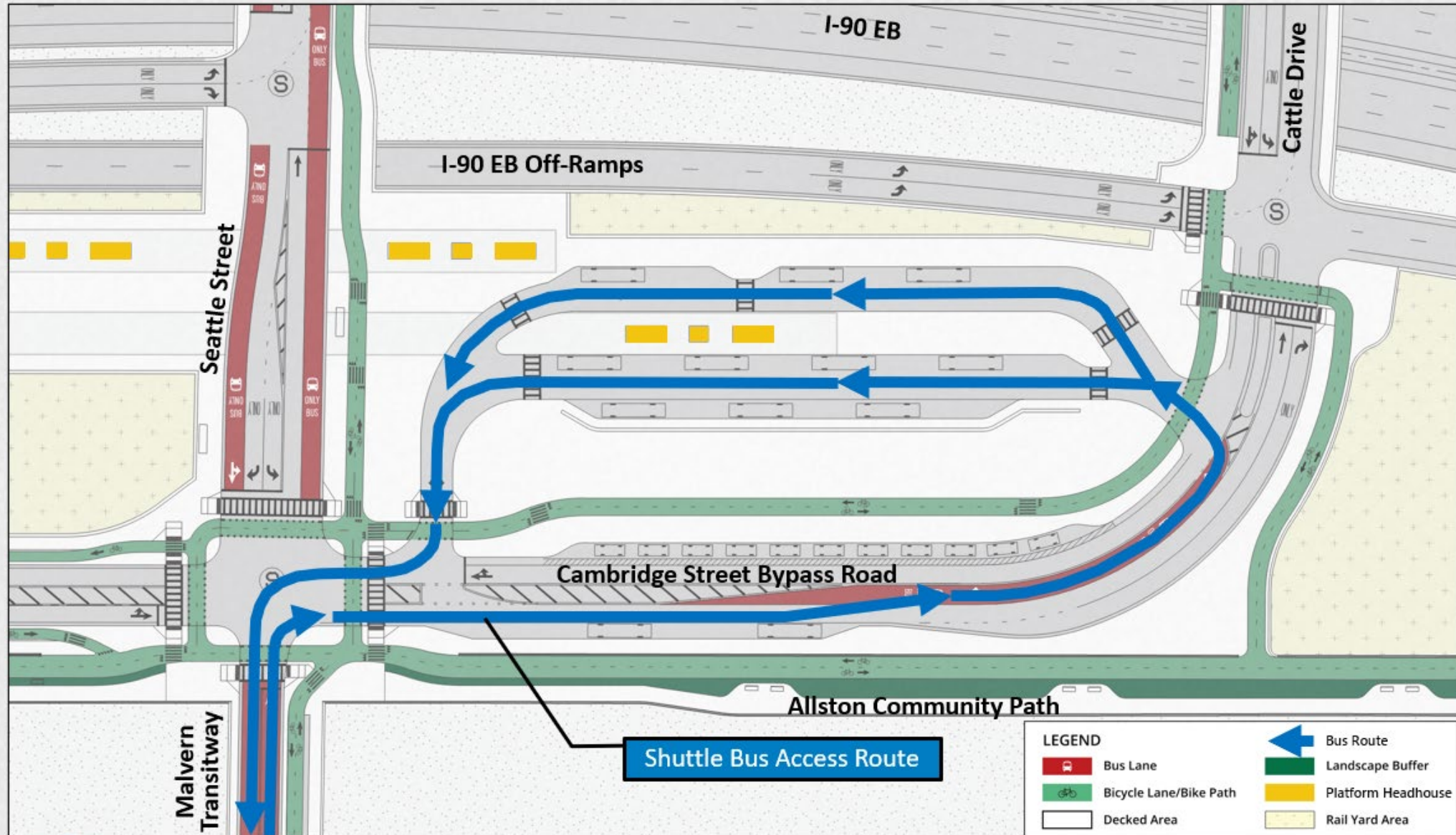
Bus Access Routes



DRAFT – FOR DISCUSSION PURPOSES ONLY

TASK FORCE MEETING – 6/17/25

Bus Access Routes



Today's Agenda

- Welcome/Introductions
- Layover Update
- MBTA, MassDOT Compass Rail and Amtrak Operations
- Rail Components
- West Station Bus Concourse
- **Next Steps**

Next Steps

- Proposed Upcoming Task Force Meeting Dates: Jul 22, Aug 19, Sep 18
- Potential Topics at Upcoming Task Force Meetings
 - Status of Alternate Layover Sites
 - IMR Briefing
 - CTPS Follow-Up
 - Grand Junction Rail Temporary Outage/Mitigation
 - Lincoln Street Noise Wall
 - Future Beacon Park Yard Land Use
- Other Suggested Topics for Upcoming Task Force Meetings?

Thank You!

