



Commonwealth of Massachusetts  
Executive Office of Energy & Environmental Affairs

---

## Department of Environmental Protection

One Winter Street Boston, MA 02108 • 617-292-5500

DEVAL L. PATRICK  
Governor

TIMOTHY P. MURRAY  
Lieutenant Governor

RICHARD K. SULLIVAN JR.  
Secretary

KENNETH L. KIMMELL  
Commissioner

### **Massachusetts 2010-2020 Solid Waste Master Plan**

### **APPENDICES**

**April 2013**

## **APPENDICES**

Appendix A:	2010 Solid Waste Data Update
Appendix B:	Data Collection and Analysis
Appendix C:	2008 Residential Solid Waste and Recycling Data by Municipality
Appendix D:	2008 Residential Solid Waste and Recycling Program Information by Municipality
Appendix E:	MSW Landfills and Combustion Facilities
Appendix F:	Transfer Stations and Handling Facilities
Appendix G:	Food Waste Processing and Composting Facilities
Appendix H:	Links to Solid Waste Facility Listings
Appendix I:	Massachusetts Recycling Loan Fund: Summary of Loans Awarded
Appendix J:	List of Solid Waste Master Plan Discussions and Participating Organizations
Appendix K:	List of References Consulted
Appendix L:	List of Acronyms

# **Appendix A**

## **2010 Solid Waste Data Update**

Available at <http://www.mass.gov/dep/recycle/priorities/10swdata.doc> and  
<http://www.mass.gov/dep/recycle/priorities/10swdata.pdf>.

The 2010 Solid Waste Data Update includes updated solid waste and recycling data for 2010 and updated waste management capacity projections.

## **Appendix B**

### **Data Collection and Analysis**

This Appendix describes how MassDEP collects and analyzes solid waste data.

#### **Data Collection**

Table A-1 shows the sources MassDEP relies on to track solid waste data. Each of the data sources is described below.

**Table A-1: Major Solid Waste Data Sources**

<b>Data Type</b>	<b>Data Source</b>
Disposal	<ul style="list-style-type: none"><li>• Annual Facility Reports</li></ul>
Imports / Exports	<ul style="list-style-type: none"><li>• Annual Facility Reports</li><li>• Survey of Other States' Data</li></ul>
MSW Recycling	<ul style="list-style-type: none"><li>• Recycling Processor Reports</li><li>• Bottle Bill Tonnage</li></ul>
Composting	<ul style="list-style-type: none"><li>• Compost Site Reports</li></ul>
C&D Recycling	<ul style="list-style-type: none"><li>• Recycling Processor Reports</li><li>• Annual Facility Reports</li></ul>
Other C&D Diversion	<ul style="list-style-type: none"><li>• Annual Facility Reports</li><li>• Recycling Processor Reports</li></ul>

#### *Annual Facility Reports*

In Massachusetts, all landfills, combustion facilities, transfer stations and handling facilities must submit an Annual Facility Report to MassDEP summarizing the type and quantity of waste managed. Data from the landfill and combustion facility reports provide information regarding total tonnage of waste disposed in Massachusetts. The reports also contain information on the import and export of waste.

#### *Survey of Other States' Data*

In addition to using Annual Facility Reports, MassDEP gathers information on the import and export of solid waste across state lines by contacting neighboring state solid waste management agencies and significant out-of-state facilities. MassDEP compares amounts from each of these sources to Massachusetts' data and the largest import/export amount is used.

### *Compost Site Reports*

Each year, MassDEP requests a compost site report from all municipal and commercial composting sites. This survey provides the total centralized composting tonnage. Also, 100,000 tons is added to the base commercial composting amount to account for farm composting which is not reported to MassDEP. This figure is an estimate from the Massachusetts Department of Agricultural Resources (DAR).

### *Recycling Processor Reports*

Each year, MassDEP surveys all known recycling processors in the state. Companies that process MSW material as well as construction and demolition (C&D) debris for reuse are surveyed for information on the type and amount of material processed. The results are used to provide the total statewide MSW recycling tonnage and to estimate the C&D recycling rate. MassDEP attempts to contact all processors, however, for known processors that do not respond, their reported tonnages from the previous year or most recent year is carried forward. Information from large C&D processing facilities is extracted from the Annual Facility Reports filed with MassDEP through regulatory requirements. See below for an explanation of how residential and commercial recycling figures and the C&D recycling rate are calculated from these reports.

### *Bottle Bill Tonnage*

Bottle bill recycling results are credited toward the residential recycling rate. Container recovery (i.e., deposit redemption) rates are obtained from the Massachusetts Department of Revenue. MassDEP estimates the recycled tonnage using trade association data on both material composition (glass, aluminum, plastic, etc) of the beverage containers recovered and average unit weights for different container types. Composition percentages are adjusted based on information provided by deposit container collection companies to reflect the specific conditions in Massachusetts.

## **Data Calculations**

The following formulas and definitions are used to estimate quantities in Table 3, Solid Waste Generation and Management, 2000 – 2009 and in Appendix A. The terms, emphasized in bold type, are presented in the same order in which they appear in the table. Also, completely lower case terms are not included in the table but are calculated in the data analyzed.

**Total Generation** = In-State Disposal + Diversion + Disposal Exports – Disposal Imports

**MSW Generation** = MSW Disposal + MSW Diversion + MSW Exports - MSW Imports

**Non-MSW Generation** = C&D + Other Non-MSW Generation

**C&D Generation** = C&D Disposal + C&D Recycling + C&D Other Diversion + C&D Exports  
– C&D Imports

**Other Non-MSW Generation** = Other Non-MSW Disposal + Other Non-MSW Diversion +  
Other Non-MSW Exports – Other Non-MSW Imports

**Diversion** = MSW Diversion + Non-MSW Diversion

**MSW Diversion** = MSW Recycling + MSW Composting

**MSW Recycling** = MSW Recycling is estimated using Recycling Processor Report data and Bottle Bill data

**MSW Composting** is estimated using Compost Site Report data + DAR estimates for farm composting.

**Non-MSW Diversion** = C&D Recycling + C&D Other Diversion

**C&D Recycling** is estimated using data from the Recycling Processor Report and Annual Facility Report data.

**C&D Other Diversion** includes C&D fines used for landfill cover, wood burned as fuel, and C&D residuals used for inactive landfill closures and is estimated using Recycling Processor Report and Annual Facility Report data.

**Other Non-MSW Diversion** includes post-industrial materials prepared as fuel cubes.

**Disposal** = Landfill Disposal + Combustion Disposal + Disposal Exports – Disposal Imports

**Disposal Exports** and **Imports** are estimated using data from Annual Facility Reports and a survey of other states.

**Landfill Disposal** = MSW Disposal + C&D Disposal + Other Disposal

**MSW Disposal** is estimated using data from Annual Facility Reports

**C&D Disposal** is estimated using data from Annual Facility Reports

**Other Disposal** is estimated using data from Annual Facility Reports, and represents all non-MSW disposal other than C&D (e.g., contaminated media, recycling residues, industrial waste, street sweepings, etc.)

**Combustion** = MSW Combustion + Non-MSW Combustion

**MSW Combustion** is estimated using data from Annual Facility Reports

**Non-MSW Combustion** is estimated using data from Annual Facility Reports

## Appendix C

### 2008 Residential Solid Waste and Recycling Data by Municipality

Column A: Municipality	Column B: Total Tons Disposed (Column C or D + Column E if applicable)	Column C: Reported Disposal Tonnage	Column D: Default Disposal Estimate (when no disposal tonnage reported)	Column E: Residential Subscription Hauler Disposal Tonnage (estimated disposal for residents not served by a municipal program)	Column F: Total Tons Recycled (Paper, glass, plastic, metal, textiles, swap shop)	Column G: Total Tons Composted (Column H+I+J)	Column H: Tons of Leaf & Yard Waste, Christmas Trees and Food Waste Collected	Column I: Home Compost Bin Credit (Tons)	Column J: Default Compost Program Credit (Education, Enforcement and/or Pick-up/Drop-off)	Column K: Tons Hazardous Products and Difficult to Manage Wastes (Columns L+M)	Column L: Tons Hazardous Products & Difficult to Manage Waste Collected	Column M: Tons Hazardous Products Collected at One-Day Events	Column N: Total Tons Diverted (Columns F+G+K)	Column O: Tons Generated (Sum of Disposal & Total Diversion) (Columns B+N)	Column P: Recycling Rate (Total Tons Diverted/ Tons Generated) (Column N/Column O)
ABINGTON	5,687	5,687	-	-	1,640	1,120	-	-	1,120	-	-	1.01	2761	8,448	33%
ACTON	6,940	3,757	-	3,183	1,462	489	489	-	-	26	16.0218	10	1977	8,917	22%
ACUSHNET	4,364	4,364	-	-	458	190	188	2	-	13	12.7325	0	660	5,024	13%
ADAMS	4,133	-	4,133	-	368	255	252	3	-	1	0.0545	0.76	624	4,757	13%
AGAWAM	11,819	8,913	-	2,906	2,198	2,714	2,702	12	-	72	70.6379	1.49	4984	16,803	30%
ALFORD	389	255	-	134	74	30	-	-	30	0	0.06	0.06	104	493	21%
AMESBURY	5,853	5,853	-	-	795	169	150	19	-	-	-	1.25	965	6,818	14%
AMHERST	8,525	201	-	8,324	897	2,441	-	-	2,441	90	88.6995	1.6	3428	11,953	29%
ANDOVER	11,777	11,777	-	-	4,192	6,116	6,100	16	-	76	72.2589	3.92	10384	22,161	47%

[illegible]



Column A: Municipality	Column B: Total Tons Disposed (Column C or D + Column E if applicable)	Column C: Reported Disposal Tonnage	Column D: Default Disposal Estimate (when no disposal tonnage reported)	Column E: Residential Subscription Hauler Disposal Tonnage (estimated disposal for residents not served by a municipal program)	Column F: Total Tons Recycled (Paper, glass, plastic, metal, textiles, swap shop)	Column G: Total Tons Composted (Column H+I+J)	Column H: Tons of Leaf & Yard Waste, Christmas Trees and Food Waste Collected	Column I: Home Compost Bin Credit (Tons)	Column J: Default Compost Program Credit (Education, Enforcement and/or Pick-up/Drop-off)	Column K: Tons Hazardous Products and Difficult to Manage Wastes (Columns L+M)	Column L: Tons Hazardous Products & Difficult to Manage Waste Collected	Column M: Tons Hazardous Products Collected at One-Day Events	Column N: Total Tons Diverted (Columns F+G+K)	Column O: Tons Generated (Sum of Disposal & Total Diversion) (Columns B+N)	Column P: Recycling Rate (Total Tons Diverted/ Tons Generated) (Column N/Column O)
AYER	2,814	1,015	-	1,799	545	241	237	4	-	64	63.4784	0.12	850	3,664	23%
BARNSTABLE	24,355	11,783	-	12,572	3,493	1,003	1,003	-	-	151	149.718	1.24	4647	29,002	16%
BARRE	1,253	1,012	-	241	498	60	60	-	-	48	47.6733	0	606	1,859	33%
BECKET	411	411	-	-	150	-	-	-	-	8	7.831	0.13	158	569	28%
BEDFORD	4,548	4,548	-	-	1,546	814	810	4	-	-	-	1.9	2362	6,910	34%
BELCHERTOWN	6,031	1,088	-	4,943	634	616	611	5	-	48	47.53	0	1297	7,328	18%
BELLINGHAM	6,906	6,286	-	620	1,018	1,120	-	-	1,120	45	43.027	2.23	2183	9,089	24%
BELMONT	8,679	8,679	-	-	2,640	2,056	2,033	23	-	38	35.6935	2.08	4734	13,413	35%
BERKLEY	2,024	525	-	1,499	244	32	32	-	-	18	18.1633	0	294	2,318	13%
BERLIN	Did Not Report														NA
BERNARDSTON	513	399	-	114	204	151	-	-	151	9	9.20125	0.06	365	878	42%

[illegible]

Column A: Municipality	Column B: Total Tons Disposed (Column C or D + Column E if applicable)	Column C: Reported Disposal Tonnage	Column D: Default Disposal Estimate (when no disposal tonnage reported)	Column E: Residential Subscription Hauler Disposal Tonnage (estimated disposal for residents not served by a municipal program)	Column F: Total Tons Recycled (Paper, glass, plastic, metal, textiles, swap shop)	Column G: Total Tons Composted (Column H+I+J)	Column H: Tons of Leaf & Yard Waste, Christmas Trees and Food Waste Collected	Column I: Home Compost Bin Credit (Tons)	Column J: Default Compost Program Credit (Education, Enforcement and/or Pick-up/Drop-off)	Column K: Tons Hazardous Products and Difficult to Manage Wastes (Columns L+M)	Column L: Tons Hazardous Products & Difficult to Manage Waste Collected	Column M: Tons Hazardous Products Collected at One-Day Events	Column N: Total Tons Diverted (Columns F+G+K)	Column O: Tons Generated (Sum of Disposal & Total Diversion) (Columns B+N)	Column P: Recycling Rate (Total Tons Diverted/ Tons Generated) (Column N/Column O)
BRAINTREE	15,573	15,573	-	-	2,216	4,452	4,452	-	-	28	17.7556	10.2	6696	22,269	30%
BREWSTER	6,139	6,139	-	-	1,046	182	181	1	-	53	44.4718	8.71	1281	7,420	17%
BRIDGEWATER	Did Not Report														NA
BRIMFIELD	Did Not Report														NA
BROCKTON	32,099	25,534	-	6,565	5,179	7,368	7,345	23	-	155	151.325	3.75	12702	44,801	28%
BROOKFIELD	1,355	579	-	776	170	36	36	-	-	18	17.8813	0	224	1,579	14%
BROOKLINE	20,670	20,670	-	-	9,151	1,906	1,906	-	-	-	-	13.1	11070	31,740	35%
BUCKLAND	326	248	-	78	179	140	-	-	140	1	1.1875	0.13	320	646	50%
BURLINGTON	8,981	8,981	-	-	1,638	1,250	1,250	-	-	8	0.8187	7.06	2896	11,877	24%
CAMBRIDGE	23,173	23,173	-	-	9,094	2,176	2,052	124	-	158	148.053	10.4	11428	34,601	33%
CANTON	8,206	8,206	-	-	1,156	4,340	4,340	-	-	56	54.65	0.91	5552	13,758	40%

Column A: Municipality	Column B: Total Tons Disposed (Column C or D + Column E if applicable)	Column C: Reported Disposal Tonnage	Column D: Default Disposal Estimate (when no disposal tonnage reported)	Column E: Residential Subscription Hauler Disposal Tonnage (estimated disposal for residents not served by a municipal program)	Column F: Total Tons Recycled (Paper, glass, plastic, metal, textiles, swap shop)	Column G: Total Tons Composted (Column H+I+J)	Column H: Tons of Leaf & Yard Waste, Christmas Trees and Food Waste Collected	Column I: Home Compost Bin Credit (Tons)	Column J: Default Compost Program Credit (Education, Enforcement and/or Pick-up/Drop-off)	Column K: Tons Hazardous Products and Difficult to Manage Wastes (Columns L+M)	Column L: Tons Hazardous Products & Difficult to Manage Waste Collected	Column M: Tons Hazardous Products Collected at One-Day Events	Column N: Total Tons Diverted (Columns F+G+K)	Column O: Tons Generated (Sum of Disposal & Total Diversion) (Columns B+N)	Column P: Recycling Rate (Total Tons Diverted/ Tons Generated) (Column N/Column O)
CARLISLE	1,846	1,838	-	8	782	388	-	-	388	107	106.395	0.63	1277	3,123	41%
CARVER	3,781	3,781	-	-	118	402	400	2	-	-	-	1.59	521	4,302	12%
CHARLEMONT	181	181	-	-	101	97	-	-	97	-	-	0.06	198	379	52%
CHARLTON	3,396	3,396	-	-	476	-	-	-	-	-	-	6.18	482	3,878	12%
CHATHAM	4,179	4,179	-	-	1,352	1,243	1,236	7	-	52	50.0043	2.45	2647	6,826	39%
CHELMSFORD	13,020	13,020	-	-	4,143	611	559	51	-	26	25.718	0.28	4780	17,800	27%
CHELSEA	13,022	12,135	-	887	859	175	175	-	-	5	4.875	0.43	1040	14,062	7%
CHESHIRE	1,015	808	-	207	300	267	266	1	-	18	17.615	0.31	585	1,600	37%
CHESTER	180	119	-	61	82	84	-	-	84	4	3.5	0	170	350	49%
CHESTERFIELD	181	181	-	-	100	88	-	4	84	4	3.75251	0.13	192	373	51%
CHICOPEE	24,263	19,397	-	4,866	5,860	5,179	5,171	8	-	141	138.023	2.68	11179	35,442	32%

Column A: Municipality	Column B: Total Tons Disposed (Column C or D + Column E if applicable)	Column C: Reported Disposal Tonnage	Column D: Default Disposal Estimate (when no disposal tonnage reported)	Column E: Residential Subscription Hauler Disposal Tonnage (estimated disposal for residents not served by a municipal program)	Column F: Total Tons Recycled (Paper, glass, plastic, metal, textiles, swap shop)	Column G: Total Tons Composted (Column H+I+J)	Column H: Tons of Leaf & Yard Waste, Christmas Trees and Food Waste Collected	Column I: Home Compost Bin Credit (Tons)	Column J: Default Compost Program Credit (Education, Enforcement and/or Pick-up/Drop-off)	Column K: Tons Hazardous Products and Difficult to Manage Wastes (Columns L+M)	Column L: Tons Hazardous Products & Difficult to Manage Waste Collected	Column M: Tons Hazardous Products Collected at One-Day Events	Column N: Total Tons Diverted (Columns F+G+K)	Column O: Tons Generated (Sum of Disposal & Total Diversion) (Columns B+N)	Column P: Recycling Rate (Total Tons Diverted/ Tons Generated) (Column N/Column O)
CHILMARK	406	406	-	-	119	46	46	-	-	1	0.02	0.86	166	572	29%
CLARKSBURG	Incomplete Data														NA
CLINTON	4,299	2,381	-	1,918	366	48	48	-	-	9	9.0325	0	423	4,722	9%
COHASSET	2,329	2,329	-	-	1,308	98	94	4	-	41	40.713	0.2	1447	3,776	38%
COLRAIN	255	234	-	21	153	126	-	-	126	5	5.4335	0.04	284	539	53%
CONCORD	4,024	2,434	-	1,590	3,073	477	408	68	-	42	40.7144	0.79	3591	7,615	47%
CONWAY	610	594	-	16	294	127	-	-	127	11	11.0125	0.04	432	1,042	41%
CUMMINGTON	249	249	-	-	109	73	-	5	68	4	1.76147	1.83	186	435	43%
DALTON	1,046	577	-	469	404	62	62	-	-	-	-	0	466	1,512	31%
DANVERS	13,569	9,641	-	3,928	1,961	310	300	11	-	47	43.7164	2.85	2318	15,887	15%

Column A: Municipality	Column B: Total Tons Disposed (Column C or D + Column E if applicable)	Column C: Reported Disposal Tonnage	Column D: Default Disposal Estimate (when no disposal tonnage reported)	Column E: Residential Subscription Hauler Disposal Tonnage (estimated disposal for residents not served by a municipal program)	Column F: Total Tons Recycled (Paper, glass, plastic, metal, textiles, swap shop)	Column G: Total Tons Composted (Column H+I+J)	Column H: Tons of Leaf & Yard Waste, Christmas Trees and Food Waste Collected	Column I: Home Compost Bin Credit (Tons)	Column J: Default Compost Program Credit (Education, Enforcement and/or Pick-up/Drop-off)	Column K: Tons Hazardous Products and Difficult to Manage Wastes (Columns L+M)	Column L: Tons Hazardous Products & Difficult to Manage Waste Collected	Column M: Tons Hazardous Products Collected at One-Day Events	Column N: Total Tons Diverted (Columns F+G+K)	Column O: Tons Generated (Sum of Disposal & Total Diversion) (Columns B+N)	Column P: Recycling Rate (Total Tons Diverted/ Tons Generated) (Column N/Column O)
DARTMOUTH	11,625	5,209	-	6,416	4,670	775	756	20	-	59	56.743	2.39	5505	17,130	32%
DEDHAM	5,624	4,503	-	1,121	1,800	2,387	2,379	8	-	12	10.05	1.71	4199	9,823	43%
DEERFIELD	1,535	1,225	-	310	477	229	229	-	-	7	7	0.29	713	2,248	32%
DENNIS	8,852	5,323	-	3,529	1,713	2,083	2,083	-	-	74	68.2358	5.56	3870	12,722	30%
DEVENS	69	-	69	-	17	18	18	-	-	7	4.94575	1.61	42	111	38%
DIGHTON	1,671	1,671	-	-	490	266	266	-	-	-	-	0	756	2,427	31%
DOUGLAS	2,681	2,681	-	-	512	4	2	2	-	21	21.16	0	537	3,218	17%
DOVER	2,298	2,298	-	-	686	528	109	-	419	49	47.5248	1.01	1262	3,560	35%
DRACUT	12,630	12,126	-	504	2,407	670	669	1	-	19	17.525	1.75	3096	15,726	20%
DUDLEY	4,028	616	-	3,412	285	601	601	-	-	16	15.6895	0	902	4,930	18%
DUNSTABLE	999	502	-	497	191	224	-	-	224	10	8.85277	1.25	425	1,424	30%

Column A: Municipality	Column B: Total Tons Disposed (Column C or D + Column E if applicable)	Column C: Reported Disposal Tonnage	Column D: Default Disposal Estimate (when no disposal tonnage reported)	Column E: Residential Subscription Hauler Disposal Tonnage (estimated disposal for residents not served by a municipal program)	Column F: Total Tons Recycled (Paper, glass, plastic, metal, textiles, swap shop)	Column G: Total Tons Composted (Column H+I+J)	Column H: Tons of Leaf & Yard Waste, Christmas Trees and Food Waste Collected	Column I: Home Compost Bin Credit (Tons)	Column J: Default Compost Program Credit (Education, Enforcement and/or Pick-up/Drop-off)	Column K: Tons Hazardous Products and Difficult to Manage Wastes (Columns L+M)	Column L: Tons Hazardous Products & Difficult to Manage Waste Collected	Column M: Tons Hazardous Products Collected at One-Day Events	Column N: Total Tons Diverted (Columns F+G+K)	Column O: Tons Generated (Sum of Disposal & Total Diversion) (Columns B+N)	Column P: Recycling Rate (Total Tons Diverted/ Tons Generated) (Column N/Column O)
DUXBURY	4,244	2,900	-	1,344	2,744	2,342	2,338	4	-	95	93.315	1.88	5182	9,426	55%
EAST BRIDGEWATER	2,245	2,245	-	-	1,132	986	-	2	984	-	-	1.22	2119	4,364	49%
EAST BROOKFIELD	609	576	-	33	167	85	85	-	-	8	7.523	0.1	259	868	30%
EAST LONGMEADOW	3,831	3,831	-	-	1,958	4,985	4,976	9	-	33	30.9062	2.58	6976	10,807	65%
EASTHAM	2,936	2,936	-	-	1,085	593	559	34	-	53	47.8583	5.24	1731	4,667	37%
EASTHAMPTON	7,997	-	7,997	-	443	266	260	7	-	42	41.7631	0	751	8,748	9%
EASTON	8,700	2,497	-	6,203	847	1,638	7	-	1,631	-	-	7.5	2492	11,192	22%
EDGARTOWN	5,939	5,939	-	-	1,591	266	266	-	-	38	35.7771	2.12	1895	7,834	24%
EGREMONT	436	383	-	53	216	74	-	2	73	3	2.33625	0.25	293	729	40%
ERVING	500	500	-	-	210	95	95	-	-	3	2.42	0.11	308	808	38%
ESSEX	1,337	1,249	-	88	404	18	18	-	-	17	15.75	0.86	439	1,776	25%

Column A: Municipality	Column B: Total Tons Disposed (Column C or D + Column E if applicable)	Column C: Reported Disposal Tonnage	Column D: Default Disposal Estimate (when no disposal tonnage reported)	Column E: Residential Subscription Hauler Disposal Tonnage (estimated disposal for residents not served by a municipal program)	Column F: Total Tons Recycled (Paper, glass, plastic, metal, textiles, swap shop)	Column G: Total Tons Composted (Column H+I+J)	Column H: Tons of Leaf & Yard Waste, Christmas Trees and Food Waste Collected	Column I: Home Compost Bin Credit (Tons)	Column J: Default Compost Program Credit (Education, Enforcement and/or Pick-up/Drop-off)	Column K: Tons Hazardous Products and Difficult to Manage Wastes (Columns L+M)	Column L: Tons Hazardous Products & Difficult to Manage Waste Collected	Column M: Tons Hazardous Products Collected at One-Day Events	Column N: Total Tons Diverted (Columns F+G+K)	Column O: Tons Generated (Sum of Disposal & Total Diversion) (Columns B+N)	Column P: Recycling Rate (Total Tons Diverted/ Tons Generated) (Column N/Column O)
EVERETT	20,513	17,560	-	2,953	2,047	62	57	4	-	23	23.0625	0.24	2132	22,645	9%
FAIRHAVEN	5,965	5,965	-	-	1,068	1,057	1,046	11	-	28	25.2891	2.77	2153	8,118	27%
FALL RIVER	44,515	39,346	-	5,169	2,075	3,667	3,637	30	-	196	195.901	0.56	5938	50,453	12%
FALMOUTH	14,486	14,486	-	-	3,772	4,755	4,641	114	-	92	86.376	5.79	8619	23,105	37%
FITCHBURG	19,163	15,737	-	3,426	1,260	1,080	1,080	-	-	115	113.291	2.11	2455	21,618	11%
FLORIDA	323	323	-	-	83	2	2	-	-	4	4.04	0.03	89	412	22%
FOXBOROUGH	5,127	3,374	-	1,753	1,805	6,500	6,500	-	-	-	-	0	8305	13,432	62%
FRAMINGHAM	16,461	16,306	-	155	6,577	2,310	2,272	38	-	142	133.2	8.75	9028	25,489	35%
FRANKLIN	12,093	9,074	-	3,019	3,310	1,455	1,450	5	-	64	63.475	0.96	4829	16,922	29%
FREETOWN	3,954	3,456	-	498	399	120	120	-	-	27	26.6328	0	545	4,499	12%
GARDNER	4,613	3,538	-	1,075	1,487	7,392	7,392	-	-	25	16.9459	7.75	8904	13,517	66%



Column A: Municipality	Column B: Total Tons Disposed (Column C or D + Column E if applicable)	Column C: Reported Disposal Tonnage	Column D: Default Disposal Estimate (when no disposal tonnage reported)	Column E: Residential Subscription Hauler Disposal Tonnage (estimated disposal for residents not served by a municipal program)	Column F: Total Tons Recycled (Paper, glass, plastic, metal, textiles, swap shop)	Column G: Total Tons Composted (Column H+I+J)	Column H: Tons of Leaf & Yard Waste, Christmas Trees and Food Waste Collected	Column I: Home Compost Bin Credit (Tons)	Column J: Default Compost Program Credit (Education, Enforcement and/or Pick-up/Drop-off)	Column K: Tons Hazardous Products and Difficult to Manage Wastes (Columns L+M)	Column L: Tons Hazardous Products & Difficult to Manage Waste Collected	Column M: Tons Hazardous Products Collected at One-Day Events	Column N: Total Tons Diverted (Columns F+G+K)	Column O: Tons Generated (Sum of Disposal & Total Diversion) (Columns B+N)	Column P: Recycling Rate (Total Tons Diverted/ Tons Generated) (Column N/Column O)
GEORGETOWN	Did Not Report														NA
GILL	214	214	-	-	149	95	-	-	95	-	-	0	244	458	53%
GLOUCESTER	10,619	9,069	-	1,550	2,879	3,031	3,003	27	-	145	143.387	1.73	6055	16,674	36%
GOSHEN	169	169	-	-	95	68	-	4	64	4	3.74058	0.21	167	336	50%
GOSNOLD	Did Not Report														NA
GRAFTON	5,316	5,316	-	-	869	1,114	-	-	1,114	11	11.358	0	1995	7,311	27%
GRANBY	3,724	3,724	-	-	581	174	174	-	-	69	69.4801	0	824	4,548	18%
GRANVILLE	330	242	-	88	136	105	-	-	105	10	10.1275	0	252	582	43%
GREAT BARRINGTON	Did Not Report														NA
GREENFIELD	4,094	4,094	-	-	2,159	675	671	4	-	33	32.5174	0	2867	6,961	41%
GROTON	3,504	2,550	-	954	1,230	243	226	17	-	43	42.5359	0.66	1516	5,020	30%

Column A: Municipality	Column B: Total Tons Disposed (Column C or D + Column E if applicable)	Column C: Reported Disposal Tonnage	Column D: Default Disposal Estimate (when no disposal tonnage reported)	Column E: Residential Subscription Hauler Disposal Tonnage (estimated disposal for residents not served by a municipal program)	Column F: Total Tons Recycled (Paper, glass, plastic, metal, textiles, swap shop)	Column G: Total Tons Composted (Column H+I+J)	Column H: Tons of Leaf & Yard Waste, Christmas Trees and Food Waste Collected	Column I: Home Compost Bin Credit (Tons)	Column J: Default Compost Program Credit (Education, Enforcement and/or Pick-up/Drop-off)	Column K: Tons Hazardous Products and Difficult to Manage Wastes (Columns L+M)	Column L: Tons Hazardous Products & Difficult to Manage Waste Collected	Column M: Tons Hazardous Products Collected at One-Day Events	Column N: Total Tons Diverted (Columns F+G+K)	Column O: Tons Generated (Sum of Disposal & Total Diversion) (Columns B+N)	Column P: Recycling Rate (Total Tons Diverted/ Tons Generated) (Column N/Column O)
GROVELAND	Did Not Report														NA
HADLEY	Did Not Report														NA
HALIFAX	1,711	801	-	910	410	1,234	1,219	15	-	29	28.6266	0	1673	3,384	49%
HAMILTON	1,923	1,918	-	5	995	118	118	-	-	17	16.9059	0.44	1131	3,054	37%
HAMPDEN	366	366	-	-	226	20	20	-	-	-	-	0.41	247	613	40%
HANCOCK	246	246	-	-	101	51	-	-	50	9	9.165	0.04	161	407	40%
HANOVER	4,693	4,693	-	-	1,648	1,445	1,437	8	-	79	74.5537	4.83	3172	7,865	40%
HANSON	3,260	2,743	-	517	540	679	-	1	678	33	30.4532	2.3	1252	4,512	28%
HARDWICK	1,446	-	1,446	-	165	0	-	-	-	9	8.5505	0	174	1,620	11%
HARVARD	2,168	1,548	-	620	543	411	5	-	406	26	26.0463	0	981	3,149	31%
HARWICH	6,910	4,644	-	2,266	1,518	3,175	3,175	-	-	93	90.7134	2.68	4787	11,697	41%

Column A: Municipality	Column B: Total Tons Disposed (Column C or D + Column E if applicable)	Column C: Reported Disposal Tonnage	Column D: Default Disposal Estimate (when no disposal tonnage reported)	Column E: Residential Subscription Hauler Disposal Tonnage (estimated disposal for residents not served by a municipal program)	Column F: Total Tons Recycled (Paper, glass, plastic, metal, textiles, swap shop)	Column G: Total Tons Composted (Column H+I+J)	Column H: Tons of Leaf & Yard Waste, Christmas Trees and Food Waste Collected	Column I: Home Compost Bin Credit (Tons)	Column J: Default Compost Program Credit (Education, Enforcement and/or Pick-up/Drop-off)	Column K: Tons Hazardous Products and Difficult to Manage Wastes (Columns L+M)	Column L: Tons Hazardous Products & Difficult to Manage Waste Collected	Column M: Tons Hazardous Products Collected at One-Day Events	Column N: Total Tons Diverted (Columns F+G+K)	Column O: Tons Generated (Sum of Disposal & Total Diversion) (Columns B+N)	Column P: Recycling Rate (Total Tons Diverted/ Tons Generated) (Column N/Column O)
HATFIELD	Did Not Report														NA
HAVERHILL	25,789	25,789	-	-	2,807	7,229	7,200	29	-	22	19.58	2.39	10057	35,846	28%
HAWLEY	Did Not Report														NA
HEATH	242	242	-	-	92	56	-	-	56	1	0.62625	0.03	149	391	38%
HINGHAM	7,016	7,016	-	-	2,896	4,469	4,469	-	-	140	136.099	3.45	7505	14,521	52%
HINSDALE	752	447	-	305	181	146	146	-	-	8	7.908	0.05	335	1,087	31%
HOLBROOK	2,080	1,679	-	401	805	112	112	-	-	-	-	0	918	2,998	31%
HOLDEN	5,719	4,492	-	1,227	2,103	1,812	1,808	4	-	14	14.3975	0	3929	9,648	41%
HOLLAND	Did Not Report														NA
HOLLISTON	4,443	4,020	-	423	2,039	1,554	1,540	14	-	56	53.2155	2.5	3648	8,091	45%
HOLYOKE	8,364	8,364	-	-	2,132	3,457	3,441	16	-	77	75.5895	1.22	5666	14,030	40%

Column A: Municipality	Column B: Total Tons Disposed (Column C or D + Column E if applicable)	Column C: Reported Disposal Tonnage	Column D: Default Disposal Estimate (when no disposal tonnage reported)	Column E: Residential Subscription Hauler Disposal Tonnage (estimated disposal for residents not served by a municipal program)	Column F: Total Tons Recycled (Paper, glass, plastic, metal, textiles, swap shop)	Column G: Total Tons Composted (Column H+I+J)	Column H: Tons of Leaf & Yard Waste, Christmas Trees and Food Waste Collected	Column I: Home Compost Bin Credit (Tons)	Column J: Default Compost Program Credit (Education, Enforcement and/or Pick-up/Drop-off)	Column K: Tons Hazardous Products and Difficult to Manage Wastes (Columns L+M)	Column L: Tons Hazardous Products & Difficult to Manage Waste Collected	Column M: Tons Hazardous Products Collected at One-Day Events	Column N: Total Tons Diverted (Columns F+G+K)	Column O: Tons Generated (Sum of Disposal & Total Diversion) (Columns B+N)	Column P: Recycling Rate (Total Tons Diverted/ Tons Generated) (Column N/Column O)
HOPEDALE	1,947	1,911	-	36	655	18	18	-	-	6	6.0545	0.31	679	2,626	26%
HOPKINTON	4,636	4,636	-	-	1,976	1,063	10	3	1,050	5	0.0772	4.51	3044	7,680	40%
HUBBARDSTON	Incomplete Data														NA
HUDSON	5,013	1,400	-	3,613	695	1,168	1,168	-	-	12	11.0675	1.34	1876	6,889	27%
HULL	5,830	-	5,830	-	464	38	34	4	-	7	6.75325	0	509	6,339	8%
HUNTINGTON	714	491	-	223	197	160	-	8	152	3	3.25661	0.15	360	1,074	34%
IPSWICH	3,932	3,932	-	-	2,222	1,250	1,250	-	-	5	4.16382	0.84	3477	7,409	47%
KINGSTON	6,241	4,347	-	1,894	798	684	682	2	-	54	53.2156	0.83	1536	7,777	20%
LAKEVILLE	4,125	1,451	-	2,674	633	705	700	5	-	23	22.7778	0	1361	5,486	25%
LANCASTER	3,135	-	3,135	-	136	492	2	-	490	18	17.57	0.19	645	3,780	17%

Column A: Municipality	Column B: Total Tons Disposed (Column C or D + Column E if applicable)	Column C: Reported Disposal Tonnage	Column D: Default Disposal Estimate (when no disposal tonnage reported)	Column E: Residential Subscription Hauler Disposal Tonnage (estimated disposal for residents not served by a municipal program)	Column F: Total Tons Recycled (Paper, glass, plastic, metal, textiles, swap shop)	Column G: Total Tons Composted (Column H+I+J)	Column H: Tons of Leaf & Yard Waste, Christmas Trees and Food Waste Collected	Column I: Home Compost Bin Credit (Tons)	Column J: Default Compost Program Credit (Education, Enforcement and/or Pick-up/Drop-off)	Column K: Tons Hazardous Products and Difficult to Manage Wastes (Columns L+M)	Column L: Tons Hazardous Products & Difficult to Manage Waste Collected	Column M: Tons Hazardous Products Collected at One-Day Events	Column N: Total Tons Diverted (Columns F+G+K)	Column O: Tons Generated (Sum of Disposal & Total Diversion) (Columns B+N)	Column P: Recycling Rate (Total Tons Diverted/ Tons Generated) (Column N/Column O)
LANESBOROUGH	1,289	-	1,289	-	116	210	-	1	209	-	-	0.18	326	1,615	20%
LAWRENCE	29,860	27,042	-	2,818	1,167	1,627	1,627	-	-	25	24.6178	0	2819	32,679	9%
LEE	2,527	-	2,527	-	220	412	-	3	410	0	0.16	0.21	632	3,159	20%
LEICESTER	4,483	-	4,483	-	944	87	87	1	-	48	48.373	0	1079	5,562	19%
LENOX	3,026	-	3,026	-	108	-	-	-	-	2	1.6	0.3	110	3,136	4%
LEOMINSTER	12,429	12,429	-	-	1,622	1,491	1,490	1	-	43	38.504	4.61	3156	15,585	20%
LEVERETT	331	331	-	-	248	138	-	6	132	8	8.04165	0	394	725	54%
LEXINGTON	9,336	8,774	-	562	5,960	5,102	5,068	33	-	168	158.061	9.44	11229	20,565	55%
LEYDEN	<b>Did Not Report</b>														<b>NA</b>
LINCOLN	1,373	1,133	-	240	619	36	34	2	-	50	49.9525	0	705	2,078	34%
LITTLETON	3,887	2,354	-	1,533	925	228	228	-	-	30	30.3383	0.08	1183	5,070	23%

Column A: Municipality	Column B: Total Tons Disposed (Column C or D + Column E if applicable)	Column C: Reported Disposal Tonnage	Column D: Default Disposal Estimate (when no disposal tonnage reported)	Column E: Residential Subscription Hauler Disposal Tonnage (estimated disposal for residents not served by a municipal program)	Column F: Total Tons Recycled (Paper, glass, plastic, metal, textiles, swap shop)	Column G: Total Tons Composted (Column H+I+J)	Column H: Tons of Leaf & Yard Waste, Christmas Trees and Food Waste Collected	Column I: Home Compost Bin Credit (Tons)	Column J: Default Compost Program Credit (Education, Enforcement and/or Pick-up/Drop-off)	Column K: Tons Hazardous Products and Difficult to Manage Wastes (Columns L+M)	Column L: Tons Hazardous Products & Difficult to Manage Waste Collected	Column M: Tons Hazardous Products Collected at One-Day Events	Column N: Total Tons Diverted (Columns F+G+K)	Column O: Tons Generated (Sum of Disposal & Total Diversion) (Columns B+N)	Column P: Recycling Rate (Total Tons Diverted/ Tons Generated) (Column N/Column O)
LONGMEADOW	4,114	4,114	-	-	2,400	3,282	3,274	8	-	38	37.5329	0.8	5721	9,835	58%
LOWELL	39,521	39,521	-	-	3,297	3,873	3,873	-	-	30	19.9059	10	7200	46,721	15%
LUDLOW	7,228	7,228	-	-	1,374	1,215	1,214	1	-	37	36.8813	0	2626	9,854	27%
LUNENBURG	1,966	1,966	-	-	883	250	250	-	-	-	-	0.56	1134	3,100	37%
LYNN	34,474	34,474	-	-	2,369	10,010	10,000	10	-	55	55.4258	0	12435	46,909	27%
LYNNFIELD	5,011	5,011	-	-	1,247	470	469	-	-	2	0.39075	1.36	1719	6,730	26%
MALDEN	22,421	18,066	-	4,355	3,041	700	700	-	-	135	135.227	0	3876	26,297	15%
MANCHESTER	<b>Did Not Report</b>														<b>NA</b>
MANSFIELD	6,433	5,519	-	914	3,236	4,167	4,167	-	-	28	27.9355	0	7431	13,864	54%
MARBLEHEAD	11,230	9,989	-	1,241	2,145	4,355	4,350	5	-	67	64.3635	2.75	6567	17,797	37%
MARION	2,082	2,082	-	-	305	418	418	-	-	11	11.1418	0	734	2,816	26%

Column A: Municipality	Column B: Total Tons Disposed (Column C or D + Column E if applicable)	Column C: Reported Disposal Tonnage	Column D: Default Disposal Estimate (when no disposal tonnage reported)	Column E: Residential Subscription Hauler Disposal Tonnage (estimated disposal for residents not served by a municipal program)	Column F: Total Tons Recycled (Paper, glass, plastic, metal, textiles, swap shop)	Column G: Total Tons Composted (Column H+I+J)	Column H: Tons of Leaf & Yard Waste, Christmas Trees and Food Waste Collected	Column I: Home Compost Bin Credit (Tons)	Column J: Default Compost Program Credit (Education, Enforcement and/or Pick-up/Drop-off)	Column K: Tons Hazardous Products and Difficult to Manage Wastes (Columns L+M)	Column L: Tons Hazardous Products & Difficult to Manage Waste Collected	Column M: Tons Hazardous Products Collected at One-Day Events	Column N: Total Tons Diverted (Columns F+G+K)	Column O: Tons Generated (Sum of Disposal & Total Diversion) (Columns B+N)	Column P: Recycling Rate (Total Tons Diverted/ Tons Generated) (Column N/Column O)
MARLBOROUGH	15,733	13,833	-	1,900	2,560	3,880	3,856	24	-	108	101.841	5.81	6547	22,280	29%
MARSHFIELD	8,407	7,642	-	765	3,911	3,169	3,154	15	-	128	125.14	2.8	7208	15,615	46%
MASHPEE	7,803	7,803	-	-	1,097	1,011	1,004	7	-	92	88.7854	3.63	2200	10,003	22%
MATTAPOISETT	2,600	2,600	-	-	1,026	1,382	1,370	11	-	19	18.8	0.5	2427	5,027	48%
MAYNARD	2,153	1,993	-	160	1,206	741	-	-	741	17	15.9971	1.46	1965	4,118	48%
MEDFIELD	3,787	3,270	-	517	1,032	2,712	2,693	19	-	52	51.4852	0.78	3796	7,583	50%
MEDFORD	27,700	25,957	-	1,743	2,944	1,221	1,187	34	-	42	42.2135	0	4207	31,907	13%
MEDWAY	4,184	3,626	-	558	2,151	2,289	2,289	-	-	38	36.2007	1.56	4478	8,662	52%
MELROSE	12,555	9,637	-	2,918	2,536	4,205	4,199	6	-	51	49.2126	1.64	6792	19,347	35%
MENDON	<b>Did Not Report</b>														<b>NA</b>
MERRIMAC	1,511	1,061	-	450	547	13	13	-	-	-	-	1.77	562	2,073	27%







Column A: Municipality	Column B: Total Tons Disposed (Column C or D + Column E if applicable)	Column C: Reported Disposal Tonnage	Column D: Default Disposal Estimate (when no disposal tonnage reported)	Column E: Residential Subscription Hauler Disposal Tonnage (estimated disposal for residents not served by a municipal program)	Column F: Total Tons Recycled (Paper, glass, plastic, metal, textiles, swap shop)	Column G: Total Tons Composted (Column H+I+J)	Column H: Tons of Leaf & Yard Waste, Christmas Trees and Food Waste Collected	Column I: Home Compost Bin Credit (Tons)	Column J: Default Compost Program Credit (Education, Enforcement and/or Pick-up/Drop-off)	Column K: Tons Hazardous Products and Difficult to Manage Wastes (Columns L+M)	Column L: Tons Hazardous Products & Difficult to Manage Waste Collected	Column M: Tons Hazardous Products Collected at One-Day Events	Column N: Total Tons Diverted (Columns F+G+K)	Column O: Tons Generated (Sum of Disposal & Total Diversion) (Columns B+N)	Column P: Recycling Rate (Total Tons Diverted/ Tons Generated) (Column N/Column O)
NEW MARLBOROUGH	1,176	471	-	705	164	-	-	-	-	7	7.025	0.3	171	1,347	13%
NEW SALEM	194	194	-	-	96	-	-	-	-	-	-	0.05	96	290	33%
NEWBURY	3,176	1,522	-	1,654	579	489	2	4	483	14	14.1181	0	1082	4,258	25%
NEWBURYPORT	7,538	7,538	-	-	2,219	2,274	2,272	2	-	128	126.674	0.94	4620	12,158	38%
NEWTON	26,174	26,174	-	-	3,982	6,475	6,399	76	-	282	274.042	8.11	10739	36,913	29%
NORFOLK	2,450	2,450	-	-	974	782	782	-	-	42	41.0963	0.78	1798	4,248	42%
NORTH ADAMS	7,386	-	7,386	-	457	79	79	-	-	-	-	0	536	7,922	7%
NORTH ANDOVER	10,802	9,120	-	1,682	2,676	2,793	2,781	12	-	57	53.5738	2.94	5525	16,327	34%
NORTH ATTLEBOROUGH	5,703	5,589	-	114	2,958	410	400	10	-	35	31.8828	2.91	3403	9,106	37%
NORTH BROOKFIELD	1,110	643	-	467	352	144	141	3	-	19	17.8589	0.93	515	1,625	32%
NORTH READING	5,621	5,621	-	-	1,462	966	966	-	-	12	9.38	2.63	2440	8,061	30%

Column A: Municipality	Column B: Total Tons Disposed (Column C or D + Column E if applicable)	Column C: Reported Disposal Tonnage	Column D: Default Disposal Estimate (when no disposal tonnage reported)	Column E: Residential Subscription Hauler Disposal Tonnage (estimated disposal for residents not served by a municipal program)	Column F: Total Tons Recycled (Paper, glass, plastic, metal, textiles, swap shop)	Column G: Total Tons Composted (Column H+I+J)	Column H: Tons of Leaf & Yard Waste, Christmas Trees and Food Waste Collected	Column I: Home Compost Bin Credit (Tons)	Column J: Default Compost Program Credit (Education, Enforcement and/or Pick-up/Drop-off)	Column K: Tons Hazardous Products and Difficult to Manage Wastes (Columns L+M)	Column L: Tons Hazardous Products & Difficult to Manage Waste Collected	Column M: Tons Hazardous Products Collected at One-Day Events	Column N: Total Tons Diverted (Columns F+G+K)	Column O: Tons Generated (Sum of Disposal & Total Diversion) (Columns B+N)	Column P: Recycling Rate (Total Tons Diverted/ Tons Generated) (Column N/Column O)
NORTHAMPTON	7,535	2,827	-	4,708	3,425	1,372	1,275	97	-	128	126.571	1.27	4925	12,460	40%
NORTHBOROUGH	3,307	3,307	-	-	1,530	315	312	3	-	79	76.952	2.09	1924	5,231	37%
NORTHBRIDGE	8,059	8,059	-	-	1,746	1,571	1,558	13	-	8	8.01125	0	3326	11,385	29%
NORTHFIELD	642	435	-	207	355	207	-	-	207	6	5.375	0.19	567	1,209	47%
NORTON	6,918	-	-	6,918	1,312	104	101	3	-	21	20.3918	0.84	1437	8,355	17%
NORWELL	4,033	4,033	-	-	1,251	266	261	4	-	22	21.3838	1.1	1539	5,572	28%
NORWOOD	11,489	9,154	-	2,335	2,066	858	842	16	-	43	35.6429	7.5	2966	14,455	21%
OAK BLUFFS	1,274	1,039	-	235	314	159	159	-	-	-	-	1.41	474	1,748	27%
OAKHAM	Did Not Report														NA
ORANGE	3,000	944	-	2,056	984	250	248	2	-	19	18.225	0.35	1252	4,252	29%
ORLEANS	2,494	2,246	-	248	968	502	502	-	-	144	139.676	4.51	1614	4,108	39%

Column A: Municipality	Column B: Total Tons Disposed (Column C or D + Column E if applicable)	Column C: Reported Disposal Tonnage	Column D: Default Disposal Estimate (when no disposal tonnage reported)	Column E: Residential Subscription Hauler Disposal Tonnage (estimated disposal for residents not served by a municipal program)	Column F: Total Tons Recycled (Paper, glass, plastic, metal, textiles, swap shop)	Column G: Total Tons Composted (Column H+I+J)	Column H: Tons of Leaf & Yard Waste, Christmas Trees and Food Waste Collected	Column I: Home Compost Bin Credit (Tons)	Column J: Default Compost Program Credit (Education, Enforcement and/or Pick-up/Drop-off)	Column K: Tons Hazardous Products and Difficult to Manage Wastes (Columns L+M)	Column L: Tons Hazardous Products & Difficult to Manage Waste Collected	Column M: Tons Hazardous Products Collected at One-Day Events	Column N: Total Tons Diverted (Columns F+G+K)	Column O: Tons Generated (Sum of Disposal & Total Diversion) (Columns B+N)	Column P: Recycling Rate (Total Tons Diverted/ Tons Generated) (Column N/Column O)
OTIS	875	875	-	-	249	40	40	-	-	8	7.3875	0.13	297	1,172	25%
OXFORD	6,439	-	6,439	-	-	401	401	-	-	-	-	0	401	6,840	6%
PALMER	5,298	-	5,298	-	145	1,307	1,301	6	-	-	-	0	1452	6,750	22%
PAXTON	1,389	1,389	-	-	460	-	-	-	-	-	-	0	460	1,849	25%
PEABODY	23,670	23,670	-	-	3,555	1,640	1,617	23	-	94	92.6244	1.8	5289	28,959	18%
PELHAM	<b>Did Not Report</b>														<b>NA</b>
PEMBROKE	7,611	7,210	-	401	965	300	300	-	-	30	29.0885	1.13	1295	8,906	15%
PEPPERELL	4,674	1,051	-	3,623	831	840	-	-	840	49	49.0125	0	1720	6,394	27%
PERU	268	233	-	35	93	-	-	-	-	-	-	0	93	361	26%
PETERSHAM	204	204	-	-	125	-	-	-	-	-	-	0	125	329	38%
PHILLIPSTON	254	186	-	68	132	120	-	1	119	4	3.31075	0.94	257	511	50%

Column A: Municipality	Column B: Total Tons Disposed (Column C or D + Column E if applicable)	Column C: Reported Disposal Tonnage	Column D: Default Disposal Estimate (when no disposal tonnage reported)	Column E: Residential Subscription Hauler Disposal Tonnage (estimated disposal for residents not served by a municipal program)	Column F: Total Tons Recycled (Paper, glass, plastic, metal, textiles, swap shop)	Column G: Total Tons Composted (Column H+I+J)	Column H: Tons of Leaf & Yard Waste, Christmas Trees and Food Waste Collected	Column I: Home Compost Bin Credit (Tons)	Column J: Default Compost Program Credit (Education, Enforcement and/or Pick-up/Drop-off)	Column K: Tons Hazardous Products and Difficult to Manage Wastes (Columns L+M)	Column L: Tons Hazardous Products & Difficult to Manage Waste Collected	Column M: Tons Hazardous Products Collected at One-Day Events	Column N: Total Tons Diverted (Columns F+G+K)	Column O: Tons Generated (Sum of Disposal & Total Diversion) (Columns B+N)	Column P: Recycling Rate (Total Tons Diverted/ Tons Generated) (Column N/Column O)
PITTSFIELD	16,954	16,954	-	-	2,437	847	847	-	-	3	0.4125	2.71	3287	20,241	16%
PLAINFIELD	115	115	-	-	72	45	-	4	41	2	1.67839	0.14	119	234	51%
PLAINVILLE	3,075	1,331	-	1,744	765	412	398	15	-	12	11.5628	0	1189	4,264	28%
PLYMOUTH	24,292	13,719	-	10,573	3,074	1,615	1,537	78	-	227	219.801	6.88	4915	29,207	17%
PLYMPTON	1,127	929	-	198	77	199	-	-	199	2	1.95925	0	278	1,405	20%
PRINCETON	Incomplete Data														NA
PROVINCETOWN	1,462	1,462	-	-	721	19	18	1	-	66	64.328	1.95	806	2,268	36%
QUINCY	40,666	32,711	-	7,955	5,323	2,581	2,568	13	-	219	214.021	5.12	8123	48,789	17%
RANDOLPH	12,553	10,579	-	1,974	2,740	177	165	12	-	259	255.661	3.75	3176	15,729	20%
RAYNHAM	3,617	775	-	2,842	629	271	271	-	-	30	27.8345	2.66	930	4,547	20%

Column A: Municipality	Column B: Total Tons Disposed (Column C or D + Column E if applicable)	Column C: Reported Disposal Tonnage	Column D: Default Disposal Estimate (when no disposal tonnage reported)	Column E: Residential Subscription Hauler Disposal Tonnage (estimated disposal for residents not served by a municipal program)	Column F: Total Tons Recycled (Paper, glass, plastic, metal, textiles, swap shop)	Column G: Total Tons Composted (Column H+I+J)	Column H: Tons of Leaf & Yard Waste, Christmas Trees and Food Waste Collected	Column I: Home Compost Bin Credit (Tons)	Column J: Default Compost Program Credit (Education, Enforcement and/or Pick-up/Drop-off)	Column K: Tons Hazardous Products and Difficult to Manage Wastes (Columns L+M)	Column L: Tons Hazardous Products & Difficult to Manage Waste Collected	Column M: Tons Hazardous Products Collected at One-Day Events	Column N: Total Tons Diverted (Columns F+G+K)	Column O: Tons Generated (Sum of Disposal & Total Diversion) (Columns B+N)	Column P: Recycling Rate (Total Tons Diverted/ Tons Generated) (Column N/Column O)
READING	8,418	7,997	-	421	1,998	3,650	3,621	29	-	49	45.5494	3.33	5697	14,115	40%
REHOBOTH	863	863	-	-	283	75	75	-	-	6	5.5	0	364	1,227	30%
REVERE	22,173	20,420	-	1,753	2,069	764	747	17	-	77	77.33	0	2911	25,084	12%
RICHMOND	561	561	-	-	181	110	-	5	105	0	0.025	0.14	292	853	34%
ROCHESTER	2,273	2,273	-	-	362	498	496	2	-	-	26.472		886	3,159	28%
ROCKLAND	5,961	5,576	-	385	1,326	420	419	1	-	20	19.2825	0.35	1766	7,727	23%
ROCKPORT	4,623	2,912	-	1,711	1,229	2,351	2,329	23	-	24	24.1863	0	3604	8,227	44%
ROWE	270	211	-	59	59	25	-	-	25	2	2.185	0.04	86	356	24%
ROWLEY	2,857	-	2,857	-	100	7	6	-	-	6	6.1475	0	113	2,970	4%
ROYALSTON	275	223	-	52	216	91	-	3	88	9	9.18175	0	316	591	53%
RUSSELL	410	363	-	47	114	123	-	2	121	5	5.3575	0	242	652	37%

Column A: Municipality	Column B: Total Tons Disposed (Column C or D + Column E if applicable)	Column C: Reported Disposal Tonnage	Column D: Default Disposal Estimate (when no disposal tonnage reported)	Column E: Residential Subscription Hauler Disposal Tonnage (estimated disposal for residents not served by a municipal program)	Column F: Total Tons Recycled (Paper, glass, plastic, metal, textiles, swap shop)	Column G: Total Tons Composted (Column H+I+J)	Column H: Tons of Leaf & Yard Waste, Christmas Trees and Food Waste Collected	Column I: Home Compost Bin Credit (Tons)	Column J: Default Compost Program Credit (Education, Enforcement and/or Pick-up/Drop-off)	Column K: Tons Hazardous Products and Difficult to Manage Wastes (Columns L+M)	Column L: Tons Hazardous Products & Difficult to Manage Waste Collected	Column M: Tons Hazardous Products Collected at One-Day Events	Column N: Total Tons Diverted (Columns F+G+K)	Column O: Tons Generated (Sum of Disposal & Total Diversion) (Columns B+N)	Column P: Recycling Rate (Total Tons Diverted/ Tons Generated) (Column N/Column O)
RUTLAND	Did Not Report														NA
SALEM	18,244	15,891	-	2,353	1,668	2,682	2,677	5	-	25	25	0	4375	22,619	19%
SALISBURY	3,561	3,561	3,561	-	65	738	737	2	-	-	-	0.63	803	4,364	18%
SANDISFIELD	Did Not Report														NA
SANDWICH	10,777	8,880	-	1,897	1,540	2,574	2,574	-	-	116	107.351	8.91	4230	15,007	28%
SAUGUS	10,065	8,807	-	1,258	2,200	3,006	3,000	6	-	44	42.3655	1.87	5250	15,315	34%
SAVOY	314	88	-	226	51	50	-	-	49	0	0.00625	0.06	101	415	24%
SCITUATE	5,769	3,449	-	2,320	2,749	2,109	2,000	109	-	71	68.4571	2.63	4928	10,697	46%
SEEKONK	2,915	2,915	-	-	1,650	882	870	12	-	31	30.8141	0	2563	5,478	47%
SHARON	5,929	5,929	-	-	1,327	685	685	-	-	8	2.6915	5.01	2020	7,949	25%
SHEFFIELD	1,269	734	-	535	396	243	-	-	243	18	17.66	0.25	657	1,926	34%

Column A: Municipality	Column B: Total Tons Disposed (Column C or D + Column E if applicable)	Column C: Reported Disposal Tonnage	Column D: Default Disposal Estimate (when no disposal tonnage reported)	Column E: Residential Subscription Hauler Disposal Tonnage (estimated disposal for residents not served by a municipal program)	Column F: Total Tons Recycled (Paper, glass, plastic, metal, textiles, swap shop)	Column G: Total Tons Composted (Column H+I+J)	Column H: Tons of Leaf & Yard Waste, Christmas Trees and Food Waste Collected	Column I: Home Compost Bin Credit (Tons)	Column J: Default Compost Program Credit (Education, Enforcement and/or Pick-up/Drop-off)	Column K: Tons Hazardous Products and Difficult to Manage Wastes (Columns L+M)	Column L: Tons Hazardous Products & Difficult to Manage Waste Collected	Column M: Tons Hazardous Products Collected at One-Day Events	Column N: Total Tons Diverted (Columns F+G+K)	Column O: Tons Generated (Sum of Disposal & Total Diversion) (Columns B+N)	Column P: Recycling Rate (Total Tons Diverted/ Tons Generated) (Column N/Column O)
SHELBURNE	412	330	-	82	169	-	-	-	-	4	4.341	0.11	174	586	30%
SHERBORN	1,718	1,718	-	-	898	333	-	10	324	18	16.4873	1.05	1249	2,967	42%
SHIRLEY	2,778	2,060	-	718	231	12	12	-	-	11	11.2	0	254	3,032	8%
SHREWSBURY	10,425	9,102	-	1,323	3,474	4,565	4,548	17	-	25	24.5675	0	8064	18,489	44%
SHUTESBURY	346	346	-	-	198	127	-	-	127	-	-	0	325	671	48%
SOMERSET	4,392	3,875	-	517	1,829	2,931	2,931	-	-	17	15.5865	0.94	4776	9,168	52%
SOMERVILLE	25,328	25,328	-	-	4,350	1,550	1,505	45	-	300	175.35	125	6200	31,528	20%
SOUTH HADLEY	4,734	4,557	-	177	1,428	1,154	1,143	11	-	69	66.7678	1.77	2651	7,385	36%
SOUTHAMPTON	811	811	-	-	1,328	3,773	3,692	81	-	137	134.947	1.62	5237	6,048	87%
SOUTHBOROUGH	3,691	3,691	-	-	950	442	442	-	-	10	3.96819	5.63	1402	5,093	28%
SOUTHBRIDGE	8,771	5,670	-	3,101	1,299	419	411	8	-	-	-	6.25	1724	10,495	16%



Column A: Municipality	Column B: Total Tons Disposed (Column C or D + Column E if applicable)	Column C: Reported Disposal Tonnage	Column D: Default Disposal Estimate (when no disposal tonnage reported)	Column E: Residential Subscription Hauler Disposal Tonnage (estimated disposal for residents not served by a municipal program)	Column F: Total Tons Recycled (Paper, glass, plastic, metal, textiles, swap shop)	Column G: Total Tons Composted (Column H+I+J)	Column H: Tons of Leaf & Yard Waste, Christmas Trees and Food Waste Collected	Column I: Home Compost Bin Credit (Tons)	Column J: Default Compost Program Credit (Education, Enforcement and/or Pick-up/Drop-off)	Column K: Tons Hazardous Products and Difficult to Manage Wastes (Columns L+M)	Column L: Tons Hazardous Products & Difficult to Manage Waste Collected	Column M: Tons Hazardous Products Collected at One-Day Events	Column N: Total Tons Diverted (Columns F+G+K)	Column O: Tons Generated (Sum of Disposal & Total Diversion) (Columns B+N)	Column P: Recycling Rate (Total Tons Diverted/ Tons Generated) (Column N/Column O)
SOUTHWICK	2,597	2,597	-	-	619	1,528	1,400	128	-	39	37.6465	1.25	2185	4,782	46%
SPENCER	4,662	1,809	-	2,853	730	122	107	15	-	23	23.2458	0	876	5,538	16%
SPRINGFIELD	65,295	49,259	-	16,036	4,637	11,087	11,006	81	-	73	60.1163	12.5	15797	81,092	19%
STERLING	2,458	2,328	-	130	852	405	399	6	-	35	34.807	0	1292	3,750	34%
STOCKBRIDGE	1,349	1,146	-	203	609	133	-	-	133	11	10.925	0.31	753	2,102	36%
STONEHAM	9,475	8,441	-	1,034	1,536	2,557	2,553	4	-	87	87.0638	0	4180	13,655	31%
STOUGHTON	10,327	9,361	-	966	918	2,724	2,724	-	-	60	59.7693	0	3702	14,029	26%
STOW	Did Not Report														NA
STURBRIDGE	1,781	1,781	-	-	607	459	450	9	-	38	38.4551	0	1105	2,886	38%
SUDBURY	3,261	3,261	-	-	2,281	320	312	8	-	76	76.075	0	2677	5,938	45%
SUNDERLAND	570	570	-	-	278	265	-	-	265	2	1.5	0.09	545	1,115	49%

Column A: Municipality	Column B: Total Tons Disposed (Column C or D + Column E if applicable)	Column C: Reported Disposal Tonnage	Column D: Default Disposal Estimate (when no disposal tonnage reported)	Column E: Residential Subscription Hauler Disposal Tonnage (estimated disposal for residents not served by a municipal program)	Column F: Total Tons Recycled (Paper, glass, plastic, metal, textiles, swap shop)	Column G: Total Tons Composted (Column H+I+J)	Column H: Tons of Leaf & Yard Waste, Christmas Trees and Food Waste Collected	Column I: Home Compost Bin Credit (Tons)	Column J: Default Compost Program Credit (Education, Enforcement and/or Pick-up/Drop-off)	Column K: Tons Hazardous Products and Difficult to Manage Wastes (Columns L+M)	Column L: Tons Hazardous Products & Difficult to Manage Waste Collected	Column M: Tons Hazardous Products Collected at One-Day Events	Column N: Total Tons Diverted (Columns F+G+K)	Column O: Tons Generated (Sum of Disposal & Total Diversion) (Columns B+N)	Column P: Recycling Rate (Total Tons Diverted/ Tons Generated) (Column N/Column O)
SUTTON	2,838	538	-	2,300	369	88	86	2	-	10	10.3434	0	467	3,305	14%
SWAMPSCOTT	5,322	5,322	-	-	1,248	508	508	-	-	14	12.5234	1.39	1770	7,092	25%
SWANSEA	3,523	3,242	-	281	1,238	866	844	22	-	48	41.6375	6.84	2152	5,675	38%
TAUNTON	17,973	14,172	-	3,801	4,500	238	237	1	-	170	167.663	1.89	4907	22,880	21%
TEMPLETON	2,536	2,536	-	-	1,000	9	8	-	-	2	1.0185	0.53	1010	3,546	28%
TEWKSBURY	11,826	11,826	-	-	1,541	901	899	2	-	46	45.9793	0	2488	14,314	17%
TISBURY	<b>Did Not Report</b>														<b>NA</b>
TOLLAND	320	79	-	241	43	1	-	1	-	0	0.2975	0	44	364	12%
TOPSFIELD	2,082	2,082	-	-	914	2,157	2,157	-	-	-	-	1.14	3072	5,154	60%
TOWNSEND	3,526	3,526	-	-	799	662	-	2	660	7	6.67888	0	1467	4,993	29%
TRURO	1,687	1,687	-	-	906	433	424	9	-	62	60.3273	1.18	1401	3,088	45%

Column A: Municipality	Column B: Total Tons Disposed (Column C or D + Column E if applicable)	Column C: Reported Disposal Tonnage	Column D: Default Disposal Estimate (when no disposal tonnage reported)	Column E: Residential Subscription Hauler Disposal Tonnage (estimated disposal for residents not served by a municipal program)	Column F: Total Tons Recycled (Paper, glass, plastic, metal, textiles, swap shop)	Column G: Total Tons Composted (Column H+I+J)	Column H: Tons of Leaf & Yard Waste, Christmas Trees and Food Waste Collected	Column I: Home Compost Bin Credit (Tons)	Column J: Default Compost Program Credit (Education, Enforcement and/or Pick-up/Drop-off)	Column K: Tons Hazardous Products and Difficult to Manage Wastes (Columns L+M)	Column L: Tons Hazardous Products & Difficult to Manage Waste Collected	Column M: Tons Hazardous Products Collected at One-Day Events	Column N: Total Tons Diverted (Columns F+G+K)	Column O: Tons Generated (Sum of Disposal & Total Diversion) (Columns B+N)	Column P: Recycling Rate (Total Tons Diverted/ Tons Generated) (Column N/Column O)
TYNGSBOROUGH	4,218	4,100	-	118	1,244	119	113	6	-	14	13.7448	0	1377	5,595	25%
TYRINGHAM	307	132	-	175	65	-	-	-	-	3	3	0	68	375	18%
UPTON	Did Not Report														NA
UXBRIDGE	Did Not Report														NA
WAKEFIELD	9,770	9,770	-	-	1,992	5,600	5,596	4	-	36	33.6014	2.84	7628	17,398	44%
WALES	736	314	-	422	106	129	0	-	128	14	13.7539	0	248	984	25%
WALPOLE	9,037	7,900	-	1,137	2,004	3,692	3,659	33	-	25	21.6075	3.83	5721	14,758	39%
WALTHAM	20,959	20,959	-	-	3,308	792	792	-	-	104	98.005	5.84	4204	25,163	17%
WARE	Did Not Report														NA
WAREHAM	15,043	5,516	-	9,527	790	1,668	-	8	1,661	2	2.28565	0	2460	17,503	14%
WARREN	2,476	1,210	-	1,266	217	8	8	-	-	6	3.78669	2.02	230	2,706	8%

Column A: Municipality	Column B: Total Tons Disposed (Column C or D + Column E if applicable)	Column C: Reported Disposal Tonnage	Column D: Default Disposal Estimate (when no disposal tonnage reported)	Column E: Residential Subscription Hauler Disposal Tonnage (estimated disposal for residents not served by a municipal program)	Column F: Total Tons Recycled (Paper, glass, plastic, metal, textiles, swap shop)	Column G: Total Tons Composted (Column H+I+J)	Column H: Tons of Leaf & Yard Waste, Christmas Trees and Food Waste Collected	Column I: Home Compost Bin Credit (Tons)	Column J: Default Compost Program Credit (Education, Enforcement and/or Pick-up/Drop-off)	Column K: Tons Hazardous Products and Difficult to Manage Wastes (Columns L+M)	Column L: Tons Hazardous Products & Difficult to Manage Waste Collected	Column M: Tons Hazardous Products Collected at One-Day Events	Column N: Total Tons Diverted (Columns F+G+K)	Column O: Tons Generated (Sum of Disposal & Total Diversion) (Columns B+N)	Column P: Recycling Rate (Total Tons Diverted/ Tons Generated) (Column N/Column O)
WARWICK	154	154	-	-	75	53	-	-	53	4	4.4545	0.02	132	286	46%
WASHINGTON	158	158	-	-	75	39	-	1	38	9	8.5635	0	123	281	44%
WATERTOWN	11,873	11,847	-	26	2,152	1,359	1,348	12	-	124	121.7	1.83	3635	15,508	23%
WAYLAND	Did Not Report														NA
WEBSTER	7,088	265	-	6,823	662	1,120	-	-	1,120	24	24.2628	0	1806	8,894	20%
WELLESLEY	6,674	5,292	-	1,382	3,949	8,650	8,650	-	-	312	308.183	3.61	12911	19,585	66%
WELLFLEET	2,157	2,157	-	-	405	578	574	4	-	72	68.5076	3.93	1055	3,212	33%
WENDELL	211	205	-	6	108	69	-	-	69	4	3.8265	0.08	181	392	46%
WENHAM	1,327	1,327	-	-	469	-	-	-	-	-	-	0.41	469	1,796	26%
WEST BOYLSTON	2,000	2,000	-	-	556	46	44	2	-	12	11.9461	0	614	2,614	23%
WEST BRIDGEWATER	2,692	2,692	-	-	401	152	152	-	-	21	21.3055	0	574	3,266	18%

Column A: Municipality	Column B: Total Tons Disposed (Column C or D + Column E if applicable)	Column C: Reported Disposal Tonnage	Column D: Default Disposal Estimate (when no disposal tonnage reported)	Column E: Residential Subscription Hauler Disposal Tonnage (estimated disposal for residents not served by a municipal program)	Column F: Total Tons Recycled (Paper, glass, plastic, metal, textiles, swap shop)	Column G: Total Tons Composted (Column H+I+J)	Column H: Tons of Leaf & Yard Waste, Christmas Trees and Food Waste Collected	Column I: Home Compost Bin Credit (Tons)	Column J: Default Compost Program Credit (Education, Enforcement and/or Pick-up/Drop-off)	Column K: Tons Hazardous Products and Difficult to Manage Wastes (Columns L+M)	Column L: Tons Hazardous Products & Difficult to Manage Waste Collected	Column M: Tons Hazardous Products Collected at One-Day Events	Column N: Total Tons Diverted (Columns F+G+K)	Column O: Tons Generated (Sum of Disposal & Total Diversion) (Columns B+N)	Column P: Recycling Rate (Total Tons Diverted/ Tons Generated) (Column N/Column O)
WEST BROOKFIELD	1,860	-	1,860	-	21	102	102	-	-	16	15.4713	0.13	138	1,998	7%
WEST NEWBURY	1,915	1,915	-	-	381	317	-	-	317	1	0.20875	1.05	699	2,614	27%
WEST SPRINGFIELD	11,162	8,473	-	2,689	2,869	3,257	3,240	17	-	72	70.0848	1.64	6197	17,359	36%
WEST STOCKBRIDGE	479	427	-	52	219	108	1	2	105	4	3.8945	0.21	331	810	41%
WEST TISBURY	1,493	1,493	-	-	362	61	61	-	-	-	-	1.58	425	1,918	22%
WESTBOROUGH	5,471	5,471	-	-	1,239	1,278	1,248	30	-	45	40.8675	3.69	2562	8,033	32%
WESTFIELD	19,418	15,179	-	4,239	4,749	2,086	2,044	42	-	113	111.113	1.5	6947	26,365	26%
WESTFORD	9,995	9,375	-	620	5,174	61	50	11	-	26	23.1899	2.66	5261	15,256	34%
WESTHAMPTON	346	346	-	-	149	111	-	8	103	9	8.7475	0.16	269	615	44%
WESTMINSTER	Did Not Report														NA
WESTON	3,952	2,298	-	1,654	1,033	497	497	-	-	34	31.5513	2.55	1564	5,516	28%

Column A: Municipality	Column B: Total Tons Disposed (Column C or D + Column E if applicable)	Column C: Reported Disposal Tonnage	Column D: Default Disposal Estimate (when no disposal tonnage reported)	Column E: Residential Subscription Hauler Disposal Tonnage (estimated disposal for residents not served by a municipal program)	Column F: Total Tons Recycled (Paper, glass, plastic, metal, textiles, swap shop)	Column G: Total Tons Composted (Column H+I+J)	Column H: Tons of Leaf & Yard Waste, Christmas Trees and Food Waste Collected	Column I: Home Compost Bin Credit (Tons)	Column J: Default Compost Program Credit (Education, Enforcement and/or Pick-up/Drop-off)	Column K: Tons Hazardous Products and Difficult to Manage Wastes (Columns L+M)	Column L: Tons Hazardous Products & Difficult to Manage Waste Collected	Column M: Tons Hazardous Products Collected at One-Day Events	Column N: Total Tons Diverted (Columns F+G+K)	Column O: Tons Generated (Sum of Disposal & Total Diversion) (Columns B+N)	Column P: Recycling Rate (Total Tons Diverted/ Tons Generated) (Column N/Column O)
WESTPORT	4,422	4,422	-	-	1,785	56	33	23	-	25	24.9155	0	1866	6,288	30%
WESTWOOD	5,957	5,504	-	453	1,585	476	474	2	-	-	-	3.23	2065	8,022	26%
WEYMOUTH	24,373	20,827	-	3,546	7,249	3,929	3,922	7	-	163	152.282	11.2	11342	35,715	32%
WHATELY	167	167	-	-	137	119	10	-	109	4	4	0.04	260	427	61%
WHITMAN	5,774	4,987	-	787	927	132	132	-	-	33	31.5417	1.38	1092	6,866	16%
WILBRAHAM	4,452	1,049	-	3,403	1,194	2,096	2,094	2	-	18	15.7008	2.58	3308	7,760	43%
WILLIAMSBURG	577	577	-	-	338	12	3	9	-	4	3.06776	0.45	353	930	38%
WILLIAMSTOWN	3,884	3,884	-	-	993	568	565	3	-	17	16.6716	0.33	1579	5,463	29%
WILMINGTON	10,054	10,054	-	-	1,346	3,888	3,888	-	-	35	32.548	2.43	5269	15,323	34%
WINCHENDON	3,134	549	-	2,585	420	195	191	4	-	25	24.8517	0	640	3,774	17%
WINCHESTER	12,352	11,202	-	1,150	2,194	2,787	2,787	-	-	97	91.4935	5.46	5078	17,430	29%

Column A: Municipality	Column B: Total Tons Disposed (Column C or D + Column E if applicable)	Column C: Reported Disposal Tonnage	Column D: Default Disposal Estimate (when no disposal tonnage reported)	Column E: Residential Subscription Hauler Disposal Tonnage (estimated disposal for residents not served by a municipal program)	Column F: Total Tons Recycled (Paper, glass, plastic, metal, textiles, swap shop)	Column G: Total Tons Composted (Column H+I+J)	Column H: Tons of Leaf & Yard Waste, Christmas Trees and Food Waste Collected	Column I: Home Compost Bin Credit (Tons)	Column J: Default Compost Program Credit (Education, Enforcement and/or Pick-up/Drop-off)	Column K: Tons Hazardous Products and Difficult to Manage Wastes (Columns L+M)	Column L: Tons Hazardous Products & Difficult to Manage Waste Collected	Column M: Tons Hazardous Products Collected at One-Day Events	Column N: Total Tons Diverted (Columns F+G+K)	Column O: Tons Generated (Sum of Disposal & Total Diversion) (Columns B+N)	Column P: Recycling Rate (Total Tons Diverted/ Tons Generated) (Column N/Column O)
WINDSOR	213	206	-	7	111	62	-	-	61	3	2.53	0.19	176	389	45%
WINTHROP	5,622	5,622	-	-	971	283	208	75	-	21	20.939	0	1275	6,897	18%
WOBURN	19,449	15,905	-	3,544	1,741	4,899	4,891	8	-	68	67.5765	0.15	6708	26,157	26%
WORCESTER	35,079	23,189	-	11,890	9,496	16,624	16,595	29	-	137	132.297	4.21	26256	61,335	43%
WORTHINGTON	271	271	-	-	164	94	-	5	89	5	5.34688	0.15	264	535	49%
WRENTHAM	3,139	2,998	-	141	1,472	235	235	-	-	-	-	4.13	1711	4,850	35%
YARMOUTH	15,785	8,794	-	6,991	2,336	6,223	6,212	11	-	134	126.853	7.29	8693	24,478	36%

**Appendix D**  
**2008 Residential Solid Waste and Recycling Program Information by Municipality**

Municipality	MassDEP Region	Population	Total Households	Households Served by Municipal Disposal Program	Disposal Service	Recycling Service	Solid Waste Flat Fee	Pay-as-you-throw
ABINGTON	Southeast	16,000	4,310	4,310	Curbside	Curbside	No	No
ACTON	Central	21,000	7,000	3,921	Drop-off	Drop-off	Yes	No
ACUSHNET	Southeast	11,000	4,472	4,500	Curbside	Curbside	No	No
ADAMS	Western	8,809	3,992	NA	Subscription	Drop-off	No	No
AGAWAM	Western	28,528	11,643	8,832	Curbside	Curbside	No	No
ALFORD	Western	425	305	175	Drop-off	Drop-off	Yes	No
AMESBURY	Northeast	17,000	5,157	5,157	Curbside	Curbside	No	No
AMHERST	Western	34,874	8,577	NA	Subscription	Subscription	Yes	Yes
ANDOVER	Northeast	32,086	10,312	8,767	Curbside	Curbside	No	No
AQUINNAH	Southeast	344	344	172	Drop-off	Drop-off	No	Yes
ARLINGTON	Northeast	41,224	19,496	19,496	Curbside	Curbside	No	No
ASHBURNHAM	Central	6,043	2,709	100	Drop-off	Drop-off	No	No
ASHBY	Central	2,845	1,100	300	Drop-off	Drop-off	No	Yes
ASHFIELD	Western	1,800	750	750	Drop-off	Drop-off	No	Yes
ASHLAND	Northeast	16,000	6,740	5,590	Curbside	Curbside	Yes	Yes
ATHOL	Western	11,500	4,824	867	Drop-off	Drop-off	No	Yes
ATTLEBORO	Southeast	42,000	14,573	13,532	Curbside	Curbside	Yes	Yes
AUBURN	Central	15,699	6,031	4,968	Curbside	Curbside	Yes	No
AVON	Southeast	4,000	1,965	NA	Curbside	Curbside	No	No
AYER	Central	6,137	3,131	1,391	Drop-off	Drop-off	Yes	Yes
BARNSTABLE	Southeast	50,000	20,854	8,693	Drop-off	Drop-off	Yes	No
BARRE	Central	5,328	2,182	1,450	Drop-off	Drop-off	Yes	Yes
BECKET	Western	1,900	700	700	Drop-off	Drop-off	Yes	Yes
BEDFORD	Northeast	13,146	4,621	4,621	Curbside	Curbside	No	No
BELCHERTOWN	Western	14,500	6,595	1,814	Drop-off	Drop-off	Yes	Yes



Municipality	MassDEP Region	Population	Total Households	Households Served by Municipal Disposal Program	Disposal Service	Recycling Service	Solid Waste Flat Fee	Pay-as-you-throw
BELLINGHAM	Central	16,000	5,600	5,000	Curbside	Curbside	Yes	No
BELMONT	Northeast	25,000	11,000	11,000	Curbside	Curbside	No	No
BERKLEY	Southeast	6,500	2,500	1,050	Drop-off	Drop-off	Yes	Yes
BERLIN	Central	2,348	1,253	NA	Drop-off	Drop-off	No	No
BERNARDSTON	Western	2,157	780	670	Drop-off	Drop-off	No	Yes
BEVERLY	Northeast	41,500	16,000	13,081	Curbside	Curbside	Yes	No
BILLERICA	Northeast	39,981	12,349	10,949	Curbside	Curbside	No	No
BLACKSTONE	Central	8,922	3,400	3,400	Curbside	Curbside	No	No
BLANDFORD	Western	1,250	400	NA	Drop-off	Drop-off	Yes	No
BOLTON	Central	5,152	1,717	1,657	Drop-off	Drop-off	No	Yes
BOSTON	Northeast	623,351	275,098	275,098	Curbside	Curbside	No	No
BOURNE	Southeast	20,277	7,814	7,814	Curbside	Curbside	No	No
BOXBOROUGH	Central	4,600	2,000	1,585	Drop-off	Drop-off	No	No
BOXFORD	Northeast	8,862	2,742	2,604	Curbside	Curbside	No	Yes
BOYLSTON	Central	4,200	1,653	NA	Subscription	Subscription	No	No
BRAINTREE	Southeast	33,300	10,405	10,000	Curbside	Curbside	Yes	No
BREWSTER	Southeast	11,000	5,662	3,670	Drop-off	Drop-off	Yes	No
BRIDGEWATER	Southeast	25,185	10,400	NA	Drop-off	Drop-off	No	Yes
BRIMFIELD	Western	3,339	1,410	NA	Drop-off	Subscription	No	Yes
BROCKTON	Southeast	98,000	32,850	26,500	Curbside	Curbside	Yes	Yes
BROOKFIELD	Central	3,200	1,256	505	Drop-off	Drop-off	Yes	Yes
BROOKLINE	Northeast	55,400	25,605	13,260	Curbside	Curbside	Yes	No
BUCKLAND	Western	1,998	750	675	Drop-off	Drop-off	No	Yes
BURLINGTON	Northeast	23,000	7,700	7,700	Curbside	Curbside	No	No
CAMBRIDGE	Northeast	101,355	47,959	34,493	Curbside	Curbside	No	No
CANTON	Southeast	20,100	7,026	7,026	Curbside	Curbside	No	No
CARLISLE	Northeast	5,539	1,669	1,661	Drop-off	Drop-off	Yes	No
CARVER	Southeast	11,843		NA	Subscription	Subscription	No	No
CHARLEMONT	Western	1,391	500	500	Drop-off	Drop-off	No	Yes

Municipality	MassDEP Region	Population	Total Households	Households Served by Municipal Disposal Program	Disposal Service	Recycling Service	Solid Waste Flat Fee	Pay-as-you-throw
CHARLTON	Central	14,000	4,000	NA	Subscription	Subscription	No	No
CHATHAM	Southeast	6,800	6,743	4,422	Drop-off	Drop-off	Yes	No
CHELMSFORD	Northeast	33,000	12,700	12,700	Curbside	Curbside	No	No
CHELSEA	Northeast	35,088	11,326	10,468	Curbside	Curbside	Yes	No
CHESHIRE	Western	3,400	1,200	1,000	Drop-off	Drop-off	Yes	Yes
CHESTER	Western	1,200	559	500	Drop-off	Drop-off	No	Yes
CHESTERFIELD	Western	1,201	450	450	Drop-off	Drop-off	No	Yes
CHICOPEE	Western	54,992	23,117	17,881	Curbside	Curbside	No	No
CHILMARK	Southeast	843	843	400	Drop-off	Drop-off	No	Yes
CLARKSBURG	Western	1,600	657	NA	Drop-off	Drop-off	No	No
CLINTON	Central	13,435	5,597	NA	Curbside	Drop-off	No	Yes
COHASSET	Southeast	7,617	2,809	2,477	Drop-off	Drop-off	Yes	Yes
COLRAIN	Western	1,799	623	603	Drop-off	Drop-off	No	Yes
CONCORD	Northeast	17,000	5,100	3,197	Curbside	Curbside	Yes	Yes
CONWAY	Western	1,809	560	545	Drop-off	Drop-off	No	No
CUMMINGTON	Western	978	375	375	Drop-off	Drop-off	Yes	No
DALTON	Western	7,200	2,328	1,874	Drop-off	Drop-off	No	Yes
DANVERS	Northeast	25,700	11,800	8,000	Curbside	Curbside	No	No
DARTMOUTH	Southeast	35,570	11,946	10,092	Curbside	Curbside	Yes	Yes
DEDHAM	Northeast	24,046	8,892	7,808	Curbside	Curbside	No	No
DEERFIELD	Western	4,750	2,000	1,700	Drop-off	Drop-off	Yes	Yes
DENNIS	Southeast	16,000	10,000	7,245	Drop-off	Drop-off	Yes	No
DIGHTON	Southeast	7,376	2,257	2,257	Curbside	Curbside	No	Yes
DOUGLAS	Central	8,444	2,984	1,350	Drop-off	Drop-off	Yes	No
DOVER	Northeast	5,987	1,976	1,976	Drop-off	Drop-off	No	No
DRACUT	Northeast	29,399	11,200	10,712	Curbside	Curbside	No	No
DUDLEY	Central	11,000	4,000	700	Drop-off	Drop-off	Yes	No
DUNSTABLE	Central	3,200	1,000	591	Drop-off	Drop-off	No	No
DUXBURY	Southeast	15,330	5,700	4,400	Drop-off	Drop-off	Yes	Yes

Municipality	MassDEP Region	Population	Total Households	Households Served by Municipal Disposal Program	Disposal Service	Recycling Service	Solid Waste Flat Fee	Pay-as-you-throw
EAST BRIDGEWATER	Southeast	14,060	5,043	5,043	Curbside	Curbside	No	Yes
EAST BROOKFIELD	Central	2,106	1,046	1,014	Curbside	Curbside	Yes	Yes
EAST LONGMEADOW	Western	15,800	5,200	5,200	Curbside	Curbside	No	Yes
EASTHAM	Southeast	5,400	3,878	3,559	Drop-off	Drop-off	Yes	No
EASTHAMPTON	Western	16,200	7,400	NA	Subscription	Subscription	No	No
EASTON	Southeast	23,300	8,700	2,700	Curbside	Curbside	Yes	No
EDGARTOWN	Southeast	15,000	4,000	2,000	Drop-off	Drop-off	No	Yes
EGREMONT	Western	1,036	803	738	Drop-off	Drop-off	No	No
ERVING	Western	1,464	515	515	Curbside	Curbside	No	No
ESSEX	Northeast	3,300	1,385	1,300	Drop-off	Drop-off	Yes	No
EVERETT	Northeast	38,500	16,500	13,644	Curbside	Curbside	No	No
FAIRHAVEN	Southeast	16,400	6,060	5,610	Curbside	Curbside	No	No
FALL RIVER	Southeast	92,760	35,000	30,000	Curbside	Curbside	No	No
FALMOUTH	Southeast	35,000	20,000	20,000	Curbside	Curbside	No	No
FITCHBURG	Central	39,000	13,400	10,086	Curbside	Curbside	No	No
FLORIDA	Western	700	225	225	Drop-off	Drop-off	Yes	No
FOXBOROUGH	Southeast	16,853	5,469	3,773	Curbside	Curbside	Yes	Yes
FRAMINGHAM	Northeast	67,000	26,153	26,003	Curbside	Curbside	No	No
FRANKLIN	Central	32,558	11,379	8,459	Curbside	Curbside	Yes	No
FREETOWN	Southeast	8,800	3,138	2,578	Curbside	Drop-off	Yes	No
GARDNER	Central	21,000	8,200	7,160	Curbside	Curbside	Yes	Yes
GEORGETOWN	Northeast	7,400	2,458	NA	Subscription	Subscription	No	Yes
GILL	Western	1,363	540	540	Curbside	Curbside	No	Yes
GLOUCESTER	Northeast	30,273	13,799	12,300	Curbside	Curbside	No	Yes
GOSHEN	Western	921	375	375	Drop-off	Drop-off	No	Yes
GOSNOLD	Southeast	96	150	NA	Curbside	Curbside	No	Yes
GRAFTON	Central	15,914	5,669	5,669	Curbside	Curbside	No	Yes
GRANBY	Western	6,400	2,162	2,162	Drop-off	Drop-off	Yes	No
GRANVILLE	Western	1,503	615	530	Drop-off	Drop-off	No	Yes

Municipality	MassDEP Region	Population	Total Households	Households Served by Municipal Disposal Program	Disposal Service	Recycling Service	Solid Waste Flat Fee	Pay-as-you-throw
GREAT BARRINGTON	Western	7,700	1,900	NA	Drop-off	Drop-off	No	Yes
GREENFIELD	Western	18,168	7,500	7,500	Curbside	Curbside	No	Yes
GROTON	Central	10,500	2,994	1,325	Drop-off	Drop-off	Yes	Yes
GROVELAND	Northeast	6,200	900	NA	Curbside	Curbside	No	No
HADLEY	Western	4,117	2,106	NA	Drop-off	Drop-off	No	Yes
HALIFAX	Southeast	7,700	2,936	1,820	Curbside	Curbside	No	Yes
HAMILTON	Northeast	8,374	2,571	2,551	Curbside	Curbside	No	Yes
HAMPDEN	Western	5,143	1,834	754	Drop-off	Drop-off	Yes	Yes
HANCOCK	Western	721	260	260	Drop-off	Drop-off	No	No
HANOVER	Southeast	14,000	4,700	4,700	Drop-off	Drop-off	No	No
HANSON	Southeast	9,689	3,432	3,015	Drop-off	Drop-off	No	No
HARDWICK	Western	3,000	990	NA	Subscription	Drop-off	No	No
HARVARD	Central	5,800	1,950	1,350	Drop-off	Drop-off	Yes	No
HARWICH	Southeast	12,529	9,512	9,465	Drop-off	Drop-off	Yes	No
HATFIELD	Western	3,400	1,250	NA	Drop-off	Drop-off	No	Yes
HAVERHILL	Northeast	61,000	21,500	21,500	Curbside	Curbside	No	No
HAWLEY	Western	336	100	NA	Subscription	Subscription	No	No
HEATH	Western	797	250	225	Drop-off	Drop-off	Yes	No
HINGHAM	Southeast	20,500	8,496	8,496	Drop-off	Drop-off	No	No
HINSDALE	Western	1,889	739	444	Drop-off	Drop-off	Yes	No
HOLBROOK	Southeast	10,785	3,630	3,242	Curbside	Curbside	No	Yes
HOLDEN	Central	17,550	6,192	5,375	Curbside	Curbside	Yes	No
HOLLAND	Western	2,280	888	NA	Subscription	Subscription	No	No
HOLLISTON	Central	14,893	4,826	4,417	Curbside	Curbside	Yes	Yes
HOLYOKE	Western	40,167	16,917	16,197	Curbside	Curbside	No	No
HOPEDALE	Central	6,350	2,265	2,230	Curbside	Curbside	No	No
HOPKINTON	Central	15,000	5,003	5,003	Curbside	Curbside	No	No
HUBBARDSTON	Central	4,606	1,430	NA	Subscription	Subscription	No	No
HUDSON	Central	18,437	6,990	3,495	Drop-off	Drop-off	Yes	Yes

Municipality	MassDEP Region	Population	Total Households	Households Served by Municipal Disposal Program	Disposal Service	Recycling Service	Solid Waste Flat Fee	Pay-as-you-throw
HULL	Southeast	11,738	5,893	NA	Subscription	Drop-off	No	No
HUNTINGTON	Western	2,174	895	675	Drop-off	Drop-off	No	Yes
IPSWICH	Northeast	13,708	5,367	5,367	Curbside	Curbside	No	No
KINGSTON	Southeast	12,000	4,400	2,888	Drop-off	Drop-off	Yes	No
LAKEVILLE	Southeast	10,000	4,266	1,679	Drop-off	Drop-off	No	Yes
LANCASTER	Central	7,000	2,500	NA	Subscription	Drop-off	No	No
LANESBOROUGH	Western	2,990	1,203	NA	Subscription	Drop-off	No	No
LAWRENCE	Northeast	72,043	26,741	NA	Curbside	Curbside	No	No
LEE	Western	5,850	2,442	NA	Subscription	Subscription	No	No
LEICESTER	Central	10,300	3,458	NA	Subscription	Drop-off	No	No
LENOX	Western	5,807	3,093	NA	Subscription	Subscription	No	No
LEOMINSTER	Central	42,000	16,976	12,028	Curbside	Curbside	No	No
LEVERETT	Western	1,890	660	600	Drop-off	Drop-off	Yes	Yes
LEXINGTON	Northeast	29,959	11,638	11,638	Curbside	Curbside	No	No
LEYDEN	Western	683	282	NA	Subscription	Subscription	No	No
LINCOLN	Northeast	5,780	2,180	1,948	Drop-off	Drop-off	No	No
LITTLETON	Central	8,255	3,600	2,117	Drop-off	Drop-off	Yes	No
LONGMEADOW	Western	15,500	5,474	5,474	Curbside	Curbside	No	Yes
LOWELL	Northeast	105,167	35,636	NA	Curbside	Curbside	Yes	No
LUDLOW	Western	21,481	6,700	6,700	Curbside	Curbside	No	No
LUNENBURG	Central	10,000	3,800	3,200	Curbside	Curbside	No	Yes
LYNN	Northeast	90,000	32,000	32,000	Curbside	Curbside	No	No
LYNNFIELD	Northeast	12,100	4,250	4,250	Curbside	Curbside	No	No
MALDEN	Northeast	56,688	22,496	18,283	Curbside	Curbside	No	Yes
MANCHESTER	Northeast	5,575	2,122	NA	Curbside	Curbside	No	Yes
MANSFIELD	Southeast	23,100	7,460	6,576	Curbside	Curbside	No	No
MARBLEHEAD	Northeast	20,240	8,400	7,200	Curbside	Curbside	No	No
MARION	Southeast	5,697	2,500	2,500	Curbside	Curbside	No	No
MARLBOROUGH	Central	36,000	14,338	12,500	Curbside	Curbside	No	No

Municipality	MassDEP Region	Population	Total Households	Households Served by Municipal Disposal Program	Disposal Service	Recycling Service	Solid Waste Flat Fee	Pay-as-you-throw
MARSHFIELD	Southeast	25,000	10,000	9,260	Curbside	Curbside	Yes	Yes
MASHPEE	Southeast	12,296	5,256	3,903	Drop-off	Drop-off	Yes	No
MATTAPOISETT	Southeast	6,500	4,400	4,400	Curbside	Curbside	No	No
MAYNARD	Central	10,592	3,930	3,775	Curbside	Curbside	No	Yes
MEDFIELD	Central	12,836	4,500	4,000	Drop-off	Drop-off	Yes	No
MEDFORD	Northeast	54,407	15,723	14,037	Curbside	Curbside	No	No
MEDWAY	Central	14,000	4,353	3,759	Curbside	Curbside	Yes	Yes
MELROSE	Northeast	27,086	11,667	8,844	Curbside	Curbside	Yes	No
MENDON	Central	6,329	1,800	NA	Curbside	Curbside	Yes	No
MERRIMAC	Northeast	6,300	2,444	2,020	Curbside	Curbside	No	Yes
METHUEN	Northeast	41,731	15,000	12,857	Curbside	Curbside	No	No
MIDDLEBOROUGH	Southeast	21,000	8,222	6,419	Curbside	Curbside	Yes	No
MIDDLEFIELD	Western	542	175	175	Drop-off	Drop-off	Yes	No
MIDDLETON	Northeast	5,055	2,745	1,479	Drop-off	Drop-off	Yes	No
MILFORD	Central	28,500	10,000	8,900	Curbside	Curbside	No	No
MILLBURY	Central	12,784	4,201	3,000	Drop-off	Drop-off	Yes	No
MILLIS	Central	8,126	3,157	1,067	Drop-off	Drop-off	Yes	Yes
MILLVILLE	Central	3,100	1,100	1,100	Curbside	Curbside	No	No
MILTON	Northeast	26,272	9,800	9,800	Curbside	Curbside	No	Yes
MONROE	Western	98	35	NA	Curbside	Curbside	No	No
MONSON	Western	8,400	2,800	NA	Curbside	Curbside	Yes	No
MONTAGUE	Western	8,489	3,784	3,784	Curbside	Curbside	No	Yes
MONTEREY	Western	1,024	636	553	Drop-off	Drop-off	Yes	No
MONTGOMERY	Western	800	310	NA	Subscription	Curbside	No	No
MOUNT WASHINGTON	Western	144	70	NA	Drop-off	Drop-off	No	No
NAHANT	Northeast	3,975	1,600	NA	Curbside	Curbside	Yes	No
NANTUCKET	Southeast	10,000	7,000	7,000	Drop-off	Drop-off	No	No
NATICK	Northeast	33,000	8,295	8,295	Curbside	Curbside	No	Yes
NEEDHAM	Northeast	31,097	9,653	6,807	Drop-off	Drop-off	Yes	Yes

Municipality	MassDEP Region	Population	Total Households	Households Served by Municipal Disposal Program	Disposal Service	Recycling Service	Solid Waste Flat Fee	Pay-as-you-throw
NEW ASHFORD	Western	247	94	NA	Subscription	Drop-off	No	No
NEW BEDFORD	Southeast	93,768	38,178	33,674	Curbside	Curbside	No	No
NEW BRAintree	Central	1,000	300	NA	Subscription	Subscription	No	No
NEW MARLBOROUGH	Western	1,500	1,012	330	Subscription	Drop-off	Yes	No
NEW SALEM	Western	929	450	445	Drop-off	Drop-off	Yes	Yes
NEWBURY	Northeast	6,900	3,200	1,600	Drop-off	Drop-off	Yes	No
NEWBURYPORT	Northeast	17,189	7,936	7,936	Curbside	Curbside	No	No
NEWTON	Northeast	81,000	30,593	28,593	Curbside	Curbside	No	No
NORFOLK	Central	9,396	3,030	1,490	Drop-off	Drop-off	Yes	Yes
NORTH ADAMS	Western	14,670	7,535	1,425	Drop-off	Drop-off	Yes	Yes
NORTH ANDOVER	Northeast	30,145	9,896	8,269	Curbside	Curbside	No	No
NORTH ATTLEBOROUGH	Southeast	27,445	10,000	8,810	Curbside	Curbside	Yes	Yes
NORTH BROOKFIELD	Central	4,691	1,677	1,225	Drop-off	Drop-off	Yes	Yes
NORTH READING	Northeast	14,000	4,200	4,200	Curbside	Curbside	Yes	No
NORTHAMPTON	Western	30,842	11,880	6,155	Drop-off	Drop-off	No	Yes
NORTHBOROUGH	Central	14,129	5,009	4,244	Curbside	Curbside	No	Yes
NORTHBRIDGE	Central	13,914	6,314	NA	Subscription	Subscription	No	No
NORTHFIELD	Western	2,951	1,257	1,057	Drop-off	Drop-off	Yes	Yes
NORTON	Southeast	18,026	5,617	NA	Subscription	Subscription	No	No
NORWELL	Southeast	10,377	3,400	3,400	Curbside	Curbside	No	No
NORWOOD	Southeast	28,326	11,500	9,241	Curbside	Curbside	No	No
OAK BLUFFS	Southeast	4,227	4,027	3,800	Curbside	Drop-off	No	Yes
OAKHAM	Central	2,000	650	NA	Subscription	Subscription	No	No
ORANGE	Western	7,518	4,000	1,500	Drop-off	Drop-off	Yes	Yes
ORLEANS	Southeast	6,415	3,619	3,379	Drop-off	Drop-off	Yes	No
OTIS	Western	1,400	1,400	1,400	Drop-off	Drop-off	Yes	No
OXFORD	Central	12,666	5,642	NA	Subscription	Subscription	No	No
PALMER	Western	12,500	4,500	NA	Subscription	Drop-off	No	No
PAXTON	Central	6,000	1,762	1,762	Curbside	Curbside	No	No

Municipality	MassDEP Region	Population	Total Households	Households Served by Municipal Disposal Program	Disposal Service	Recycling Service	Solid Waste Flat Fee	Pay-as-you-throw
PEABODY	Northeast	48,129	18,581	18,581	Curbside	Curbside	No	No
PELHAM	Western	1,404	554	NA	Subscription	Drop-off	No	No
PEMBROKE	Southeast	18,900	6,421	6,033	Curbside	Drop-off	Yes	No
PEPPERELL	Central	12,000	5,305	1,800	Drop-off	Drop-off	Yes	Yes
PERU	Western	850	365	365	Drop-off	Drop-off	Yes	No
PETERSHAM	Western	1,300	525	326	Drop-off	Drop-off	Yes	Yes
PHILLIPSTON	Central	1,700	738	738	Drop-off	Drop-off	No	Yes
PITTSFIELD	Western	41,000	16,000	16,000	Curbside	Curbside	No	No
PLAINFIELD	Western	589	175	175	Drop-off	Drop-off	No	Yes
PLAINVILLE	Southeast	8,100	3,395	1,708	Curbside	Curbside	Yes	Yes
PLYMOUTH	Southeast	52,266	20,923	10,696	Drop-off	Drop-off	Yes	No
PLYMPTON	Southeast	2,839	961	769	Drop-off	Drop-off	Yes	No
PRINCETON	Central	3,683	1,400	NA	Subscription	Subscription	No	No
PROVINCETOWN	Southeast	3,400	4,791	3,408	Curbside	Curbside	No	No
QUINCY	Northeast	90,000	38,000	30,305	Curbside	Curbside	No	No
RANDOLPH	Southeast	31,000	9,500	7,591	Curbside	Curbside	Yes	No
RAYNHAM	Southeast	12,593	4,240	1,491	Drop-off	Drop-off	No	Yes
READING	Northeast	23,800	8,436	8,019	Curbside	Curbside	No	No
REHOBOTH	Southeast	11,396	4,053	1,330	Drop-off	Drop-off	No	Yes
REVERE	Northeast	55,000	18,275	16,579	Curbside	Curbside	No	No
RICHMOND	Western	1,501	833	833	Curbside	Curbside	No	No
ROCHESTER	Southeast	5,300	1,885	1,893	Curbside	Curbside	No	No
ROCKLAND	Southeast	17,400	5,267	4,895	Curbside	Curbside	Yes	No
ROCKPORT	Northeast	7,300	4,500	2,845	Drop-off	Drop-off	Yes	No
ROWE	Western	361	155	155	Drop-off	Drop-off	No	No
ROWLEY	Northeast	5,500	3,000	NA	Subscription	Drop-off	No	No
ROYALSTON	Western	1,250	550	500	Drop-off	Drop-off	No	Yes
RUSSELL	Western	1,725	535	490	Drop-off	Drop-off	Yes	Yes
RUTLAND	Central	9,000		NA	Subscription	Subscription	No	No



Municipality	MassDEP Region	Population	Total Households	Households Served by Municipal Disposal Program	Disposal Service	Recycling Service	Solid Waste Flat Fee	Pay-as-you-throw
SALEM	Northeast	43,000	18,175	13,615	Curbside	Curbside	Yes	No
SALISBURY	Northeast	8,082	4,875	NA	Subscription	Drop-off	No	No
SANDISFIELD	Western	794	480	NA	Drop-off	Drop-off	No	No
SANDWICH	Southeast	22,000	7,335	6,535	Drop-off	Drop-off	Yes	No
SAUGUS	Northeast	26,000	9,975	8,785	Curbside	Curbside	No	No
SAVOY	Western	705	345	126	Drop-off	Drop-off	Yes	Yes
SCITUATE	Southeast	18,223	7,500	5,256	Drop-off	Drop-off	Yes	Yes
SEEKONK	Southeast	14,000	4,939	4,782	Curbside	Curbside	Yes	Yes
SHARON	Southeast	18,350	6,000	6,000	Curbside	Curbside	No	No
SHEFFIELD	Western	3,470	1,550	900	Drop-off	Drop-off	Yes	No
SHELBURNE	Western	2,050	794	715	Drop-off	Drop-off	No	Yes
SHERBORN	Northeast	4,627	1,520	1,520	Drop-off	Drop-off	No	No
SHIRLEY	Central	5,700	2,400	1,730	Curbside	Curbside	No	Yes
SHREWSBURY	Central	33,456	11,280	10,000	Curbside	Curbside	No	Yes
SHUTESBURY	Western	1,820	862	862	Curbside	Curbside	No	Yes
SOMERSET	Southeast	18,000	6,000	5,500	Curbside	Curbside	No	Yes
SOMERVILLE	Northeast	78,000	31,555	31,555	Curbside	Curbside	No	No
SOUTH HADLEY	Western	17,196	6,736	6,765	Curbside	Curbside	Yes	No
SOUTHAMPTON	Western	5,890	2,985	2,785	Drop-off	Drop-off	Yes	Yes
SOUTHBOROUGH	Central	9,800	3,526	2,980	Drop-off	Drop-off	Yes	No
SOUTHBRIDGE	Central	17,000	9,000	6,000	Curbside	Curbside	No	No
SOUTHWICK	Western	9,000	3,300	3,300	Drop-off	Drop-off	Yes	No
SPENCER	Central	11,289	5,135	2,553	Drop-off	Drop-off	Yes	Yes
SPRINGFIELD	Western	150,000	61,000	45,488	Curbside	Curbside	Yes	No
STERLING	Central	8,060	2,899	2,773	Curbside	Curbside	No	No
STOCKBRIDGE	Western	1,900	1,390	1,194	Drop-off	Drop-off	Yes	No
STONEHAM	Northeast	22,300	8,000	7,000	Curbside	Curbside	Yes	No
STOUGHTON	Southeast	27,149	8,527	7,745	Curbside	Curbside	Yes	No
STOW	Central	5,626	1,800	NA	Subscription	Subscription	No	No

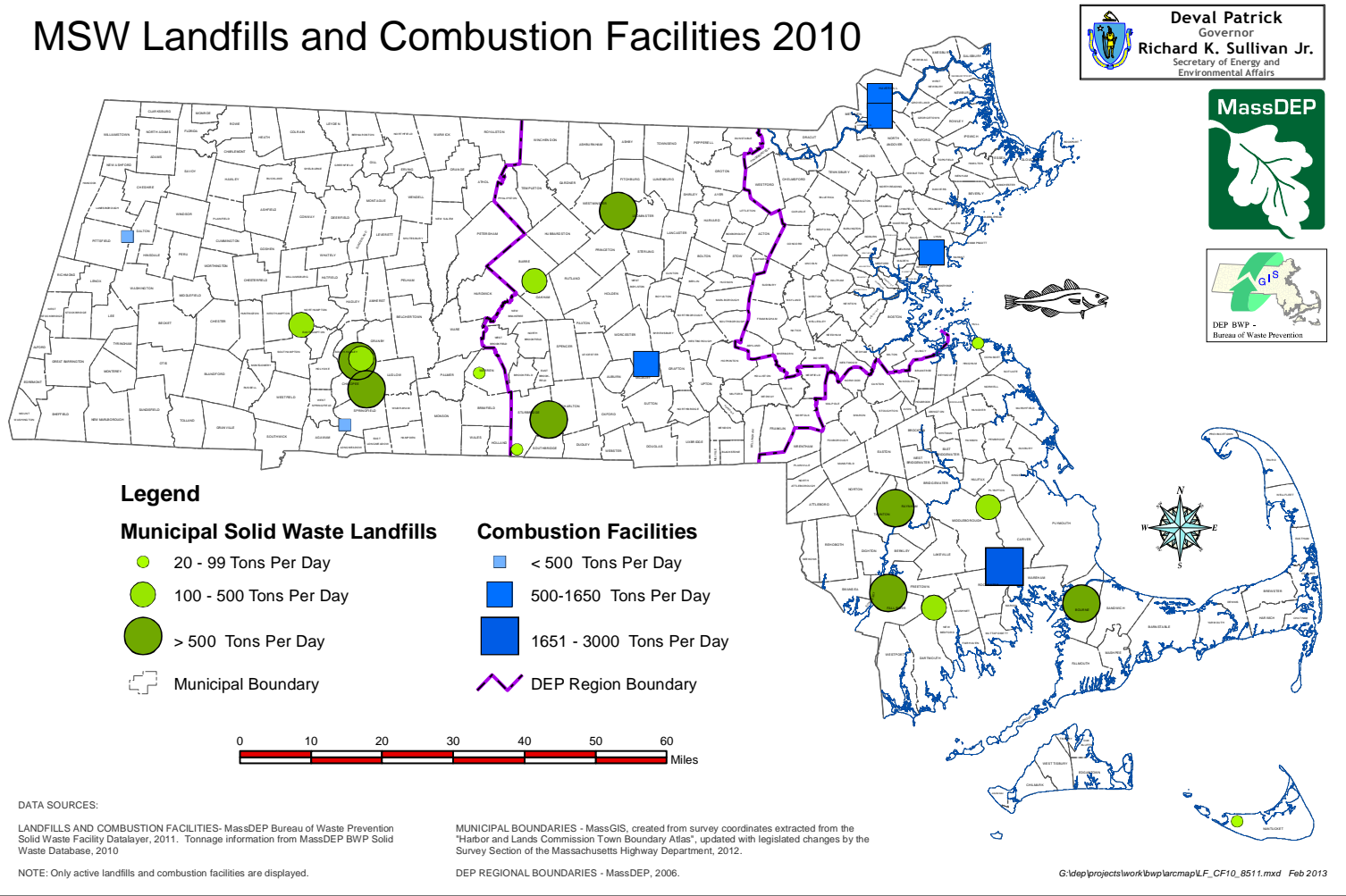
Municipality	MassDEP Region	Population	Total Households	Households Served by Municipal Disposal Program	Disposal Service	Recycling Service	Solid Waste Flat Fee	Pay-as-you-throw
STURBRIDGE	Central	9,663	4,000	1,895	Drop-off	Drop-off	No	No
SUDBURY	Northeast	17,925	5,658	1,250	Drop-off	Drop-off	Yes	Yes
SUNDERLAND	Western	3,787	900	900	Curbside	Curbside	No	Yes
SUTTON	Central	8,250	3,225	1,000	Drop-off	Drop-off	Yes	Yes
SWAMPSCOTT	Northeast	14,000	5,500	5,500	Curbside	Curbside	No	No
SWANSEA	Southeast	17,000	5,864	5,592	Curbside	Curbside	Yes	Yes
TAUNTON	Southeast	55,976	23,167	19,500	Curbside	Curbside	No	Yes
TEMPLETON	Central	7,700	3,200	NA	Subscription	Subscription	No	No
TEWKSBURY	Northeast	32,382	7,823	7,823	Curbside	Curbside	No	No
TISBURY	Southeast	4,500	3,100	NA	Curbside	Curbside	No	Yes
TOLLAND	Western	452	538	219	Drop-off	Drop-off	Yes	No
TOPSFIELD	Northeast	6,366	2,275	2,275	Curbside	Curbside	No	Yes
TOWNSEND	Central	9,430	3,402	3,402	Curbside	Curbside	No	No
TRURO	Southeast	2,067	1,000	1,000	Drop-off	Drop-off	Yes	No
TYNGSBOROUGH	Northeast	11,000	4,014	3,900	Curbside	Curbside	No	No
TYRINGHAM	Western	350	350	181	Drop-off	Drop-off	Yes	No
UPTON	Central	7,246	2,677	NA	Curbside	Curbside	No	Yes
UXBRIDGE	Central	12,600	5,100	NA	Subscription	Subscription	No	No
WAKEFIELD	Northeast	24,266	8,178	8,178	Curbside	Curbside	No	No
WALES	Western	1,834	790	382	Drop-off	Drop-off	Yes	Yes
WALPOLE	Southeast	24,080	8,500	7,400	Curbside	Curbside	No	No
WALTHAM	Northeast	60,000	23,185	23,185	Curbside	Curbside	No	No
WARE	Western	10,254	2,944	NA	Subscription	Subscription	No	No
WAREHAM	Southeast	23,724	8,230	840	Subscription	Drop-off	No	No
WARREN	Western	5,000	1,875	650	Drop-off	Drop-off	Yes	No
WARWICK	Western	753	285	250	Drop-off	Drop-off	Yes	Yes
WASHINGTON	Western	546	200	200	Drop-off	Drop-off	No	No
WATERTOWN	Northeast	32,986	15,375	15,350	Curbside	Curbside	No	No
WAYLAND	Northeast	13,741	4,732	NA	Drop-off	Drop-off	Yes	Yes

Municipality	MassDEP Region	Population	Total Households	Households Served by Municipal Disposal Program	Disposal Service	Recycling Service	Solid Waste Flat Fee	Pay-as-you-throw
WEBSTER	Central	16,000	7,000	400	Drop-off	Drop-off	No	Yes
WELLESLEY	Northeast	26,215	8,900	7,563	Drop-off	Drop-off	No	No
WELLFLEET	Southeast	3,200	2,907	2,429	Drop-off	Drop-off	Yes	No
WENDELL	Western	986	376	370	Drop-off	Drop-off	No	Yes
WENHAM	Northeast	4,500	1,320	1,320	Curbside	Curbside	No	Yes
WEST BOYLSTON	Central	7,500	2,570	2,570	Curbside	Curbside	No	Yes
WEST BRIDGEWATER	Southeast	6,789	2,304	2,304	Drop-off	Drop-off	Yes	No
WEST BROOKFIELD	Central	3,700	1,200	NA	Subscription	Subscription	No	No
WEST NEWBURY	Northeast	4,528	1,491	1,491	Curbside	Curbside	No	No
WEST SPRINGFIELD	Western	27,537	11,839	8,569	Curbside	Curbside	No	No
WEST STOCKBRIDGE	Western	1,500	678	628	Drop-off	Drop-off	No	No
WEST TISBURY	Southeast	2,467	1,755	750	Drop-off	Drop-off	No	Yes
WESTBOROUGH	Central	18,000	6,500	6,500	Drop-off	Drop-off	Yes	No
WESTFIELD	Western	42,000	13,700	9,600	Curbside	Curbside	Yes	No
WESTFORD	Northeast	20,787	8,200	7,600	Curbside	Curbside	No	No
WESTHAMPTON	Western	1,468	575	575	Drop-off	Drop-off	No	Yes
WESTMINSTER	Central	8,000	3,500	NA	Drop-off	Curbside	No	No
WESTON	Northeast	10,660	3,350	1,750	Drop-off	Drop-off	Yes	No
WESTPORT	Southeast	15,277	6,741	4,798	Drop-off	Drop-off	No	Yes
WESTWOOD	Northeast	14,000	5,012	4,574	Curbside	Curbside	No	No
WEYMOUTH	Southeast	54,000	21,300	17,870	Curbside	Curbside	Yes	No
WHATELY	Western	1,563	500	450	Drop-off	Drop-off	No	Yes
WHITMAN	Southeast	14,072	5,109	4,348	Curbside	Curbside	Yes	No
WILBRAHAM	Western	14,882	5,417	2,125	Drop-off	Drop-off	Yes	Yes
WILLIAMSBURG	Western	2,427	850	850	Drop-off	Drop-off	Yes	No
WILLIAMSTOWN	Western	8,328	2,753	1,046	Drop-off	Drop-off	Yes	Yes
WILMINGTON	Northeast	22,450	7,066	7,066	Curbside	Curbside	No	No
WINCHENDON	Central	9,971	3,680	1,180	Drop-off	Drop-off	Yes	Yes
WINCHESTER	Northeast	22,275	7,700	5,078	Drop-off	Drop-off	Yes	No

<b>Municipality</b>	<b>MassDEP Region</b>	<b>Population</b>	<b>Total Households</b>	<b>Households Served by Municipal Disposal Program</b>	<b>Disposal Service</b>	<b>Recycling Service</b>	<b>Solid Waste Flat Fee</b>	<b>Pay- as- you- throw</b>
WINDSOR	Western	875	330	321	Drop-off	Drop-off	Yes	Yes
WINTHROP	Northeast	16,427	6,500	5,500	Curbside	Curbside	No	No
WOBURN	Northeast	38,000	15,173	12,148	Curbside	Curbside	No	No
WORCESTER	Central	176,000	63,588	52,000	Curbside	Curbside	No	Yes
WORTHINGTON	Western	1,270	500	500	Drop-off	Drop-off	No	Yes
WRENTHAM	Southeast	10,500	3,800	3,400	Curbside	Curbside	No	Yes
YARMOUTH	Southeast	21,174	15,442	8,680	Drop-off	Drop-off	Yes	No

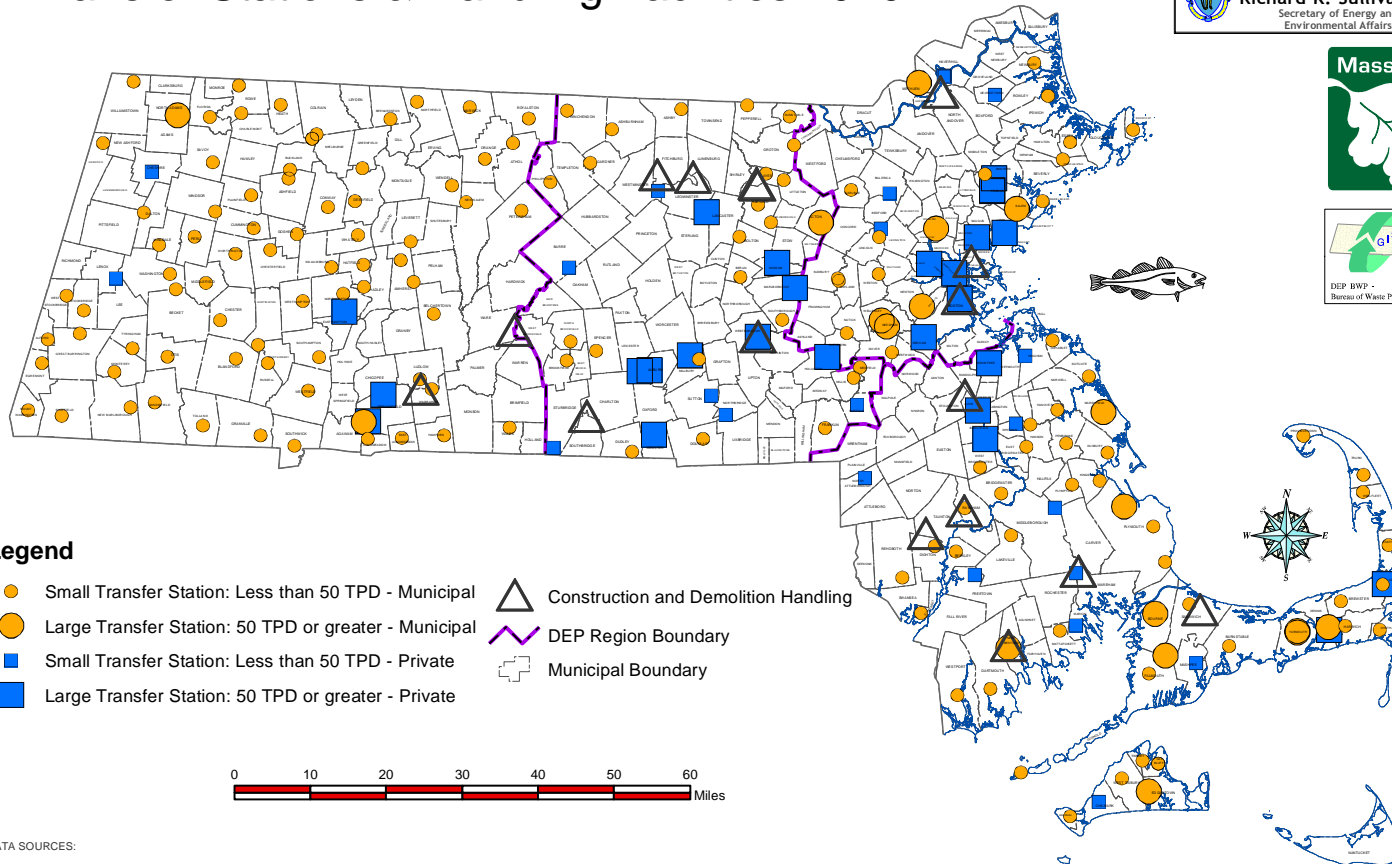
## Appendix E

### MSW Landfills and Combustion Facilities 2010



## Appendix F

### Transfer Stations & Handling Facilities 2010



#### DATA SOURCES:

TRANSFER STATIONS and CONSTRUCTION/DEMOLITION HANDLING FACILITIES-  
MassDEP Bureau of Waste Prevention Solid Waste Facility Datalayer, 2011. Tonnage  
information from MassDEP BWP Solid Waste Database, 2010.

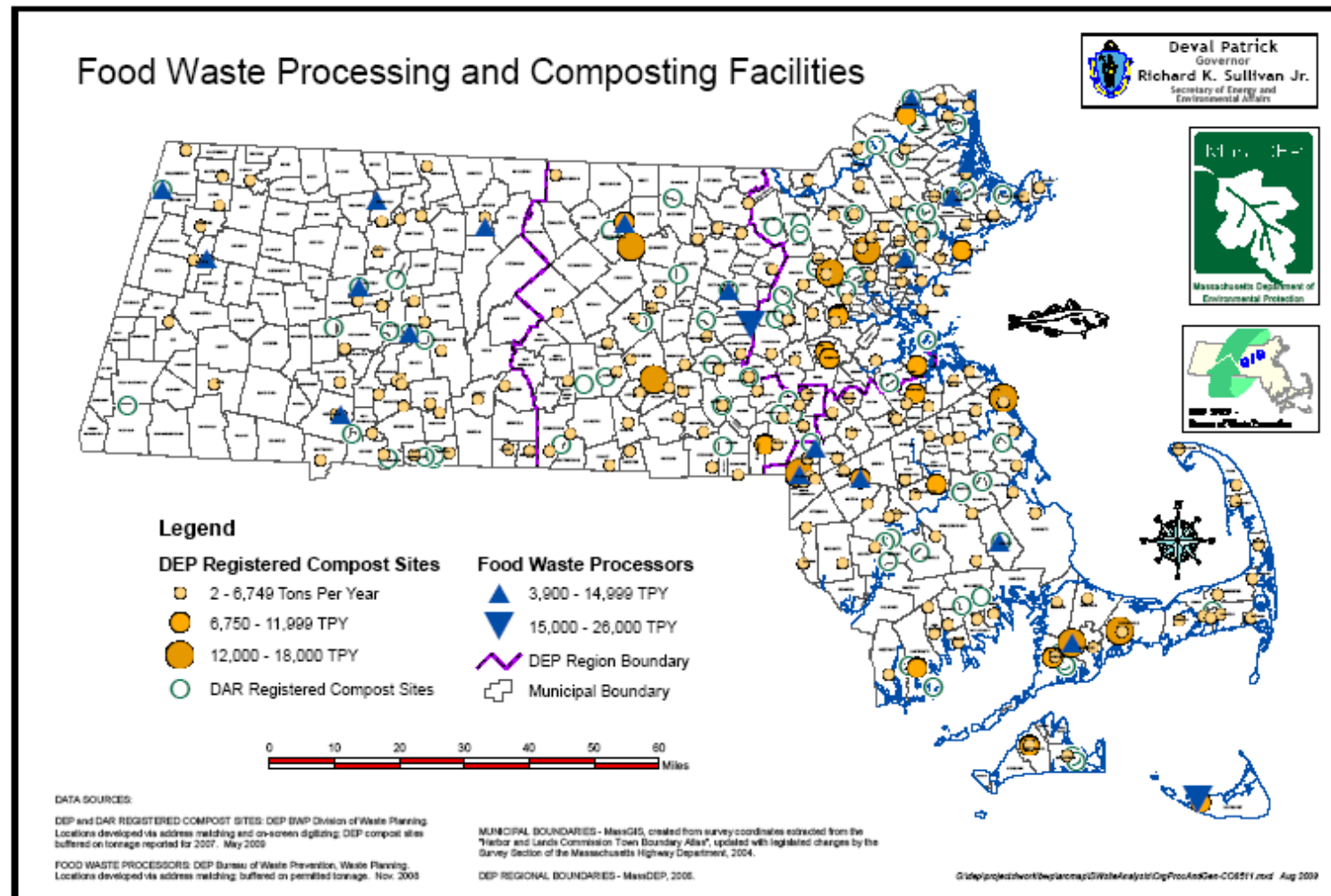
NOTE: All Construction/Demolition Handling Facilities are privately owned/operated (2010)

MUNICIPAL BOUNDARIES - MassGIS, created from survey coordinates extracted from the  
"Harbor and Lands Commission Town Boundary Atlas", updated with legislated changes by the  
Survey Section of the Massachusetts Highway Department, 2012.

DEP REGIONAL BOUNDARIES - MassDEP, 2006.

G:\dep\projects\work\bwplarcmap\TranStns10\_8511.mxd Feb 2013

## Appendix G



## **Appendix H: Links to Solid Waste Facility Listings**

Landfills	<a href="http://www.mass.gov/dep/recycle/actlf.pdf">http://www.mass.gov/dep/recycle/actlf.pdf</a>
Combustion Facilities	<a href="http://www.mass.gov/dep/recycle/actcf.pdf">http://www.mass.gov/dep/recycle/actcf.pdf</a>
Handling Facilities and Transfer Stations	<a href="http://www.mass.gov/dep/recycle/acthf.pdf">http://www.mass.gov/dep/recycle/acthf.pdf</a>
Compost Sites	<a href="http://www.mass.gov/dep/recycle/actcomp.pdf">http://www.mass.gov/dep/recycle/actcomp.pdf</a>





## Appendix I: Massachusetts Recycling Loan Fund: Summary of Grants Awarded

Date Closed	Company	Municipality	Description of Business/Loan	Loan	Leveraged (\$/K)	Jobs Created/Retained
Oct-10	Environmental Integrity Co.	Holyoke	Electronics recycling; equipment	\$200,000	\$405	16
Jun-09	Agresource (Loan #3)	Amesbury	Composting company of municipal yard waste and wastewater purchased equipment	\$130,000	None	12
Mar-09	AMT BioProducts, Corp.	New Bedford	Purchase of equipment for manufacturer of organic fertilizer	\$120,000	\$632	13
Dec-08	Rocky Hill Transport	Saugus	Purchase of equipment for composting & mulch	\$125,000	None	6
Aug-08	Recycline, Inc.	Waltham	Purchase of equipment for developer of consumer products made from recycled materials	\$200,000	\$300	14
Mar-08	DW Clark, Inc.	East Bridgewater	Debt refinance and working capital to manufacturer of metal castings	\$300,000	\$250	30
Apr-07	ERCS	Wilmington	Purchase of equipment for Carpet recycling	\$300,000	\$450	10
Jan-07	Costello Dismantling	Middleboro	Purchase of equipment for C&D recycling	\$150,000	None	45
Dec-06	Accutech Packaging	Foxboro	Purchase of equipment to mill plastics	\$270,000	None	60
Sep-06	Newland Farm	Norton	Purchase of equipment to process food waste	\$50,000	None	4
Aug-06	Jacques Construction	South Hadley	Purchase of truck to haul C&D debris	\$140,000	None	5

Aug-06	Dover Trucking	Norfolk	Purchase of equipment for commingled residential and C&D recycling	\$240,000	None	3
May-06	Destiny Polymers	Springfield	Purchase of equipment for plastics recycling	\$300,000	\$1,450	10
Jan-05	New England Recycling	Taunton	Purchase a new construction and demolition debris processing line	\$500,000	\$1,950	30
Sep-04	LeBoeuf Rubbish Removal	Southbridge	Expansion of recycling facility, eventually to handle construction and demolition debris	\$200,000	\$708	24
Feb-04	Brooks Interiors Group	Wilmington	Refurbishing office furnishings	\$150,000	None	56
Aug-03	Agresource (Loan #2)		Composting company of municipal yard waste and wastewater purchased equipment	\$185,000	None	12
Apr-03	Baird & Bartlett	Lakeville	Paper converter using recycled content paper purchased a building for its operation, saving on lease costs	\$225,000	\$2,524	20
Sep-02	Falmouth Recycling	Falmouth	Auto salvage and scrap recycler refinanced debt	\$300,000	None	7
Aug-01	Clarity Imaging Technologies	Woburn	Manufacturer toner cartridges made from recycled parts acquired working capital	\$250,000	\$850	58
Jul-01	General Metals and Smelting	Readville	Metal recycler purchased metals for recycling	\$300,000	\$4,500	20

Jun-01	Union Products	Leominster	Manufacturer of plastic products, including the pink flamingo lawn ornament acquired working capital	\$300,000	\$580	90
Oct-00	SelecTech (Loan #1)	Taunton	Manufacturer of plastic products purchased machinery and refinanced debt	\$350,000	\$1,000	36
Apr-00	Product Take Back Services	Billerica	Electronics reuse and recycling company purchased equipment and acquired working capital	\$60,000	None	5
Feb-00	Hanna Paper Recycling	Mansfield	Paper recycler covered relocation costs to a larger facility	\$200,000	None	70
Jan-00	Agresource (Loan #1)	Amesbury	Composting company of municipal yard waste and wastewater purchased equipment	\$200,000	None	9
Sep-99	Universal Fibers	Westfield	Paper recycler purchased another recycling company	\$300,000	\$850	11
Oct-98	Planet Aid, Inc. (two loans)	Holliston	Clothing recycler purchased drop-off containers	\$100,000	\$150	40
Oct-98	Planet Aid, Inc. (two loans)	Holliston	Clothing recycler purchased drop-off containers	\$150,000		
Jul-98	Eco Form	Walpole	Molded fiber packaging refinanced debt	\$150,000	\$350	14
Jan-98	Hands On Toys	Woburn	Manufacturer of foam products launched a new product and acquired working capital	\$150,000	\$450	18

Nov-97	Erickson Materials (Rouse Polymerics Northeast Inc)	Woburn	Tire recycler acquired working capital	\$150,000	\$1,096	35
Mar-97	Raynham Tire	Raynham	Tire recycler purchased equipment and acquired working capital	\$150,000	\$150	13
Mar-97	Rochester Environmental Park	Rochester	Construction and demolition debris recycler purchased property and financed start-up costs	\$150,000	\$2,450	22
Mar-97	Winthrop Steel	Fitchburg	Metal recycler acquired working capital	\$125,000	None	16
Nov-96	Captiva Recycling	Lowell	Metal recycler acquired working capital	\$100,000	\$350	8
Nov-96	Automated Recycling	West Bridgewater	Can and bottle recycler purchased equipment and improved its building	\$250,000	\$1,100	15
Oct-96	SelecTech (Loan #2)		Manufacturer of plastic products purchased equipment	\$250,000		
Feb-96	Wood Recycling	Peabody	Wood and paper recycler acquired working capital	\$150,000	\$1,000	47
Feb-96	wTe Recycling	Bedford	Metal recycler purchased property and equipment	\$100,000	\$300	25

## **Appendix J: List of Solid Waste Master Plan Discussions and Participating Organizations**

The Massachusetts Department of Environmental Protection (MassDEP) has held extensive meetings and discussions involving an extensive and diverse group of stakeholders as part of the process of drafting a new Solid Waste Master Plan (2020 Plan). This appendix summarizes the meetings that MassDEP has held or participated in relative to the 2020 Plan and summarizes the participating organizations in these discussions.

### Solid Waste Advisory Committee

MassDEP has held discussions or provided updates relative to the 2020 Plan over the course of at eight Solid Waste Advisory Committee meetings over the course of two years. Meeting notes from these meetings can be found on the MassDEP web site at <http://www.mass.gov/dep/public/committee/dswmpu02.htm>. The relevant SWAC meeting dates are listed here:

Oct 25, 2007  
Jan 24, 2008  
April 24, 2008  
June 26, 2008  
October 23, 2008  
January 22, 2009  
April 23, 2009  
June 25, 2009

### Stakeholder Meetings

In December 2008 and January 2009, MassDEP held six Stakeholder Meetings around the state to obtain input from and discuss issues with a wide range of stakeholders. A summary of comments from these meetings is available on the MassDEP web site at <http://www.mass.gov/dep/public/hearings/smwpmtdgs.htm#framework>. The meeting dates and locations were:

Boston, December 11, 2008  
Wilmington, December 16, 2008  
Holyoke, January 6, 2009  
Lakeville, January 8, 2009  
Pittsfield, January 13, 2009  
Worcester, January 15, 2009

### Workgroup Meetings

Based on the input received at these discussions, MassDEP identified seven sets of issues that required more in-depth discussion and information sharing. MassDEP formed seven ad hoc workgroups to address these issues and held between two and three meetings of each workgroup during February – April 2009. MassDEP held a total of 18 workgroup meetings with 275 participants overall. The workgroup meeting dates are listed below. Workgroup summaries can be found on the MassDEP web site at <http://www.mass.gov/dep/public/committee/swmpwkgp.htm>.

#### Reducing Waste Generation

Meetings: March 3, March 11, March 25  
41 participants

#### Education

Meetings: February 26, March 16, March 26  
38 participants

#### Municipal Capacity Building/Regionalization

Meetings: February 24, March 16  
38 participants

#### Waste Bans/Business Recycling

Meetings: February 26, March 10  
12 participants

Meetings: March 13, March 30

43 participants

#### Eliminating Barriers to Siting Waste Diversion Facilities

Meetings: February 25, March 11, March 25  
41 participants

#### Performance and Viability of Technologies for Residual Waste

Meetings: March 5, March 18, April 9  
62 participants

#### Other Meetings and Presentations

MassDEP also has met with a number of other organizations to discuss the development of the 2020 Plan, including:

Solid Waste Association of North America, Massachusetts Chapter Meeting, March 27, 2008  
MassRecycle Meeting, April 17, 2008  
Western Massachusetts Municipal Recycling Council, June 3, 2008  
Environmental Business Council (meeting with solid waste generators, haulers, and consultants), June 24, 2008  
Solid Waste Association of North America, Massachusetts Chapter Conference, September 23, 2008  
Organics Subcommittee Meeting, October 14, 2008  
Environmental organizations and advocates, October 17, 2008  
Southeast Municipal Recycling Council, January 14, 2009  
C&D Summit, January 16, 2009 and January 28, 2010  
MassRecycle Board Meeting, February 25, 2009  
Organics Summit, March 4, 2009 and April 6, 2010  
Environmental Business Council/Associated Industries of Massachusetts MassDEP Day, April 18, 2008

### Participating Organizations

Through these meetings, MassDEP has met with hundreds of individuals to discuss the Solid Waste Master Plan development. Many people and organizations have attended several of these meetings and/or submitted written comments and suggestions. Some of the participating organizations include:

#### **Environmental/Public Health Advocates**

ACE  
Acton Citizens for Environmental Safety  
Berkshire Environmental Action Team (BEAT)  
Clean Water Action  
Conservation Law Foundation  
Don't Waste Massachusetts  
Environmental League of Massachusetts  
Environment Massachusetts  
Green Decade/Newton  
Green Delaware  
GREEN Northampton  
MassPIRG  
MassRecycle  
Residents for Alternatives to Trashing Southbridge (RATS)  
Sierra Club, Cape Cod Chapter  
Sierra Club, Massachusetts Chapter  
Sierra Club Zero Waste Committee  
Saugus River Watershed Council



Toxics Action Center  
WasteCap of Massachusetts  
Watertown Citizens for Environmental Safety

### **Individual Citizens**

Hundreds of individual citizens have attended meetings or submitted written suggestions.

### **Municipal/Regional Governments**

Town of Acton  
City of Agawam  
City of Boston  
City of Cambridge  
Cape Cod Commission  
Town of Concord  
Town of Framingham  
Franklin County Solid Waste Management District  
City of Gardner  
Hilltown Resource Management Cooperative  
Town of Lexington  
City of Lynn  
City of Newton  
City of Northampton  
Northern Berkshire Solid Waste Management District (NBSWMD)  
City of Salem  
Town of Saugus  
City of Somerville  
South Shore Recycling Cooperative  
Town of Southbridge  
City of Springfield  
City of Taunton  
Town of Tewksbury  
Town of West Springfield  
Tri-Town Alliance (Quincy, Braintree, Weymouth)  
Western Massachusetts Municipal Recycling Council  
City of Worcester

### **Recycling Product Manufacturers**

Agresource  
Conigliaro Industries

CRT Recycling  
D&A Associates  
MA Aggregate & Asphalt Paving Association (MAAPA)  
The Newark Group  
Perlmutter Associates  
PJ Keating  
SelecTech, Inc

**Solid Waste and Recycling Companies and Consultants**

Allied Waste  
Alternative Resources, Inc  
ArrowBio Waste Management  
Cambridge Environmental  
Casella  
Commonwealth Resource Management Corp  
Covanta  
Day Cycle  
EL Harvey & Sons  
Frade's Disposal  
International Paper Products Corporation  
IST  
National Solid Waste Management Association, Massachusetts Chapter  
The Resource Tech Group  
NRG Energy, Inc  
Waste Management/Wheelabrator/Recycle America  
Ze-Gen

**State Agencies**

MassDevelopment  
Operational Services Division (OSD)  
Department of Energy Resources  
Office of Technical Assistance and Technology  
Toxics Use Reduction Institute at UMass Lowell  
Center for Clean Production at UMass Lowell

## **Appendix K: List of References Consulted**

### Overview

As part of the process to develop the 2020 Solid Waste MasterPlan, the Massachusetts Department of Environmental Protection (MassDEP) has conducted research and reviewed reports on a wide range of waste reduction and solid waste management issues. This document provides a summary of the references consulted. This is not intended to be a complete listing of references, but rather to provide readers with a general understanding of the level of research and information gathering that MassDEP used to inform development of the Draft 2020 Plan. This research began in the summer of 2007 and continued through the summer of 2009. The research summarized here is in addition to the external participation and input described in Appendix I, although there are many connections between the two. While MassDEP conducted this research specifically for the purpose of developing this plan, solid waste and waste reduction issues; including program strategies, statutes and regulations in other states and countries, and treatment and processing technologies; are continually evolving and ongoing research and information gathering is necessary to inform the implementation and future revisions to the 2020 Plan.

The documents, presentations, and other information resources that MassDEP consulted can be grouped into the following categories, which are described further below:

- Laws, regulations, program strategies, and data from other countries
- Laws, regulations, program strategies, and data from other states
- Local and regional (within states) waste reduction strategies, laws, and regulations (within Massachusetts and in other states)
- Relative environmental benefits and impacts of alternative waste management approaches, including evolving technologies
- Recycling markets and economic benefits of recycling

### Other Countries

- MassDEP reviewed many documents about solid waste and waste reduction issues in other countries, including:
  - The 27 European Union member countries
  - Canada and individual Canadian provinces
  - Japan and China
  - Australia and New Zealand
- MassDEP conducted particular research on European Union policies and regulations, including both European Union directives, and implementation of directives by individual countries.
- MassDEP also reviewed available information on recycling rates in other countries.

### Other States

- MassDEP reviewed information about programs in approximately 40 other states. Particular emphasis was placed on Northeast states and states on the West coast which were identified as having effective waste reduction, recycling, and composting programs and achieving high recycling/diversion rates. Types of information sources consulted include:
  - State laws and regulations
  - State solid waste master plans
  - State program descriptions and outreach materials
  - State funding mechanisms
  - State solid waste data reports
  - State level product stewardship/producer responsibility initiatives
  - State agency websites
  - Telephone conversations with officials from other states
  - Conference and webinar presentations by officials from other states
  - Periodicals, trade association publications, and newspaper articles

### Local/Regional Programs

- In addition to researching national and state level programs, MassDEP also has conducted research on smaller scale programs, regulations, and policies at the local level or regional level (within a state.) Types of initiatives reviewed include incentive programs, laws and regulations, innovative waste reduction programs, and development of new technologies and facilities.
- Some of the local government programs reviewed include, but are not limited to, San Francisco, CA; Los Angeles, CA and Los Angeles County; Portland, OR/Metro; Seattle, WA; New York City; and Chittenden County and Central Vermont Solid Waste Management Districts in Vermont.

### Environmental Benefits/Impacts

- MassDEP has reviewed dozens of reports and studies about the relative environmental impacts and benefits of different waste management approaches, including source reduction, recycling, composting, landfilling, municipal waste combustion, and other technologies such as anaerobic digestion, gasification, and pyrolysis. Some of these reports are lifecycle analyses, others are more narrowly focused (e.g., studies on the air emissions of different types of solid waste conversion technologies).
- MassDEP's research in this area led us to issue a request for proposals for a consultant to review and summarize existing lifecycle studies relative to solid waste management, and to provide MassDEP with a report summarizing these studies, providing an analysis of these studies and how they apply to Massachusetts, and summarizing best management practices from other states and countries about how best to advance our solid waste management system to achieve the best environmental outcomes.

- MassDEP engaged the Tellus Institute to conduct this review. The Tellus Institute report, titled *Assessment of Materials Management Options for the Solid Waste Master Plan Review*, was completed in December 2008 and posted on the MassDEP web site at <http://www.mass.gov/dep/recycle/priorities/dswmpu01.htm>. A cover letter from MassDEP and comments received on the Tellus Report that include additional information are available on the same web page.
- As a follow-up to the information received via the Tellus Institute's report and comments submitted on the report, MassDEP held a Solid Waste Master Plan workgroup titled Performance and Viability of Technologies for Residual Waste. This workgroup is described more in Appendix I and more information is available on the MassDEP web site at <http://www.mass.gov/dep/public/committee/swmpwkgp.htm>.
- MassDEP also has reviewed different models for calculating the greenhouse gas emissions and reductions from different waste management practices, including using the EPA Waste Reduction Model (WARM) to analyze different scenarios for managing mixed solid waste, as well as individual materials, and how lifecycle greenhouse gas emissions would change due to various recycling rates and different disposal scenarios.
- MassDEP also has reviewed reports based on other models including the US EPA Decision Support Tool and the Northeast Recycling Council Environmental Benefits Calculator (which uses the WARM model for GHG analysis).

#### Recycling Markets/Economic Benefits

- MassDEP also conducted research on the economic benefits of different materials management strategies, including material management costs and recycling markets.
- Although recycling market research focused in part on the short term due to relatively low recycling markets in 2008 and 2009, this research also focused on longer-term recycling market trends.
- In a related matter, the Northeast Recycling Council, a regional group of 10 Northeast states including Massachusetts published an updated Recycling Economic Information Study in February 2009, which is available on the web at [www.nerc.org](http://www.nerc.org).
- MassDEP also has reviewed information about the comparative benefits and costs of single-stream versus dual stream recycling, including reviewing information from Massachusetts municipalities and materials recovery facilities that have switched from dual-stream to single-stream collection and processing.

## **Appendix L: List of Acronyms**

ABC	asphalt, brick, and concrete
BUD	beneficial use determination
CARE	Carpet America Recovery Effort
C&D	construction and demolition debris
CMR	Code of Massachusetts Regulations
DON	determination of need (for site assignment)
EEA	Executive Office of Energy and Environmental Affairs
EPP	environmentally preferable products
EPR	extended producer responsibility
GHG	greenhouse gases
GWSA	Global Warming Solutions Act
HHP	hazardous household products
MAC	Municipal Assistance Coordinator
MassDEP	Massachusetts Department of Environmental Protection
MFA	Massachusetts Food Association
MSW	municipal solid waste
MSE	mechanically stabilized earthen (berms)
NEWMOA	Northeast Waste Management Officials Association
OSD	Operational Services Division

PAYT	pay-as-you-throw
RIRC	Recycling Industries Reimbursement Credit
SRPC	Supermarket Recyclign Program Certification
SWMP	Solid Waste Master Plan
TURA	Toxics Use Reduction Act
US EPA	United States Environmental Protection Agency