

Appendix B: Projected Risk of Flooding

Table B-1. Flood Elevation Projections for Stormwater BMP Assessment Sites

Site ID	Town	Class	Site Elevation (NAVD88 ft)	Year	% Risk of Flooding	Depth at 1% Risk Depth (ft)
1	Cohasset	A	6.46	2013	20%	1.7
				2030	50%	2.8
				2070	100%	6.3
2	Cohasset	A	8.43	2013	0.5%	Dry
				2030	5%	0.9
				2070	100%	4.4
8/9	Cohasset	A	5.51	2013	50%	2.7
				2030	100%	3.8
				2070	100%	7.3
11	Fairhaven	D	7.88	2013	5%	3.9
				2030	10%	4.5
				2070	50%	7.2
15	Fairhaven	D	3.81	2013	100%	8.0
				2030	100%	8.6
				2070	100%	11.3
16	Fairhaven	D	2.39	2013	100%	9.4
				2030	100%	10.0
				2070	100%	12.7
17	Provincetown	A	9.71	2013	0%	Dry
				2030	0.5%	Dry
				2070	50%	3.0
18	Provincetown	A	4.95	2013	30%	3.0
				2030	50%	4.5
				2070	100%	7.8
19a	Hull	B	13.35	2013	0%	Dry
				2030	0%	Dry
				2070	1%	0.1
19b	Hull	B	15.78	2013	0%	Dry
				2030	0%	Dry
				2070	0%	Dry
22a	Scituate	C	4.10	2013	100%	4.1
				2030	100%	5.2
				2070	100%	8.7
22b	Scituate	C	9.94	2013	0%	Dry
				2030	0.5%	Dry
				2070	50%	2.9
22c	Scituate	C	17.50	2013	0%	Dry
				2030	0%	Dry
				2070	0%	Dry
25	Sandwich	A	14.57	2013	0%	Dry
				2030	0%	Dry
				2070	0%	Dry
26	Sandwich	A	12.01	2013	0%	Dry
				2030	0.1%	Dry
				2070	5%	0.7
27	Sandwich	A	11.65	2013	0%	Dry
				2030	0.1%	Dry
				2070	5%	1.1
28	Sandwich	A	13.39	2013	0%	Dry
				2030	0%	Dry
				2070	0.5%	Dry

Table B-1. Flood Elevation Projections for Stormwater BMP Assessment Sites

Site ID	Town	Class	Site Elevation (NAVD88 ft)	Year	% Risk of Flooding	Depth at 1% Risk Depth (ft)
29	Provincetown	A	9.21	2013	0%	Dry
				2030	1%	0.2
				2070	50%	3.5
30	Oak Bluffs	E	2.45	2013	50%	6.3
				2030	50%	7.3
				2070	100%	10.1
31a	Marion	D	5.29	2013	5%	7.9
				2030	20%	8.5
				2070	100%	11.2
31b	Marion	D	5.70	2013	2%	7.5
				2030	20%	8.1
				2070	100%	10.8
31c	Marion	D	4.95	2013	5%	8.2
				2030	20%	8.8
				2070	100%	11.5
31d	Marion	D	3.18	2013	100%	10.0
				2030	100%	10.6
				2070	100%	13.3
32a	Bourne	D	5.81	2013	5%	5.8
				2030	20%	6.4
				2070	50%	9.2
32b	Bourne	D	7.48	2013	5%	5.8
				2030	20%	6.4
				2070	50%	9.2
33	Kingston	C	4.99	2013	100%	3.8
				2030	100%	5.1
				2070	100%	7.8
34	Kingston	C	16.50	2013	0%	Dry
				2030	0%	Dry
				2070	0%	Dry
35	Duxbury	C	10.27	2013	0%	Dry
				2030	0.2%	Dry
				2070	30%	2.5
37	Plymouth	C	16.99	2013	0%	Dry
				2030	0%	Dry
				2070	0%	Dry
41	Chelsea	B	10.61	2013	1.0%	0.4
				2030	10%	1.8
				2070	25%	5.5
44	Plymouth	F	38.55	2013	0%	Dry
				2030	0%	Dry
				2070	0%	Dry

Class Codes:

A = Not in high resolution model domain, but can use shoreline model results as conservative estimate

B = Directly in upland, high-resolution model domain

C = Not in high resolution model domain, but includes results in adjacent harbor/estuary

D = Not in high resolution model domain, nor does storm climatology accurately represent this area

E = No direct model results available, but data may be available from another WHG project

F = No coastal flooding expected

Figure B.1. Sites 1, 2, 8 and 9 (Cohasset)

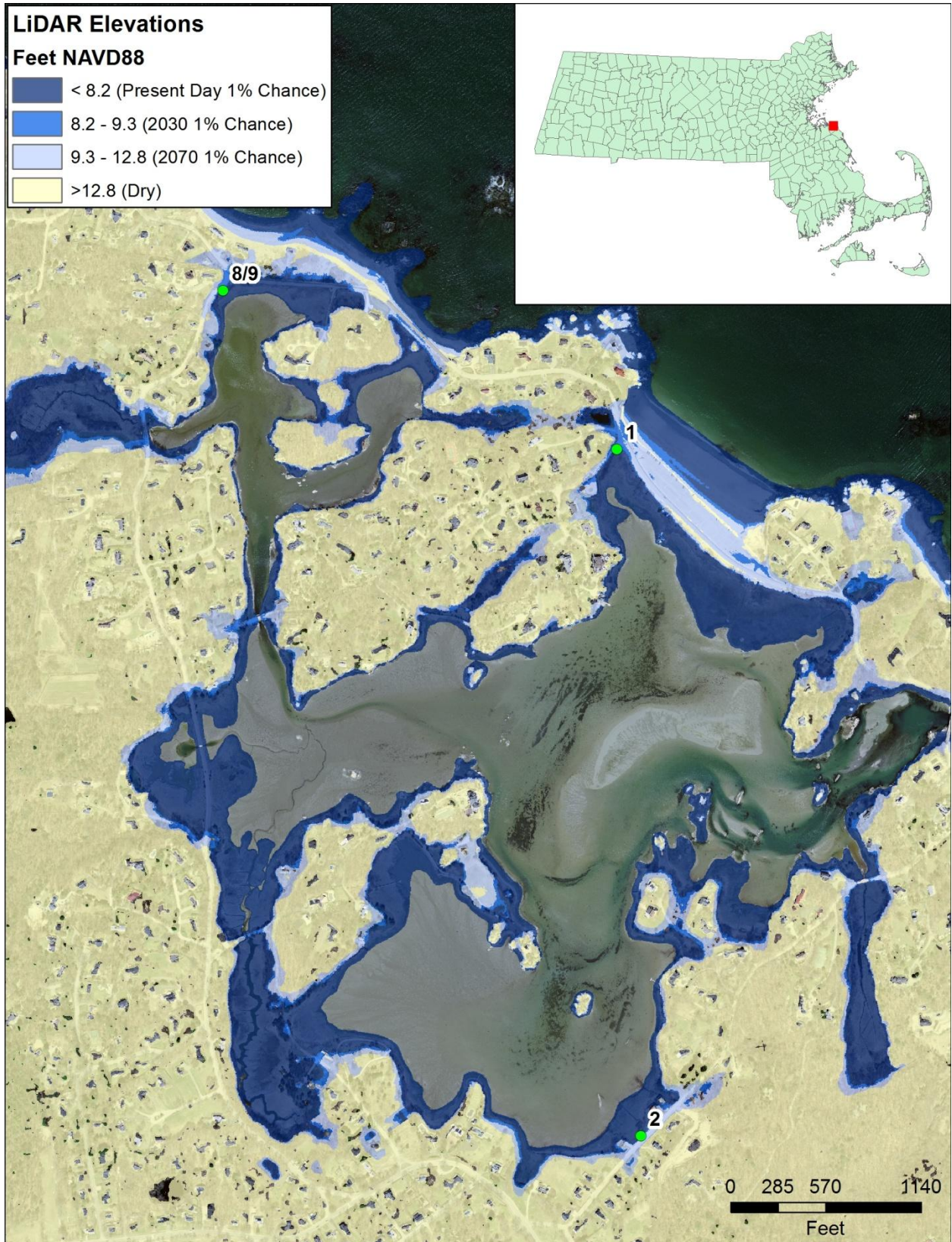


Figure B.2. Sites 11, 15 and 16 (Fairhaven)

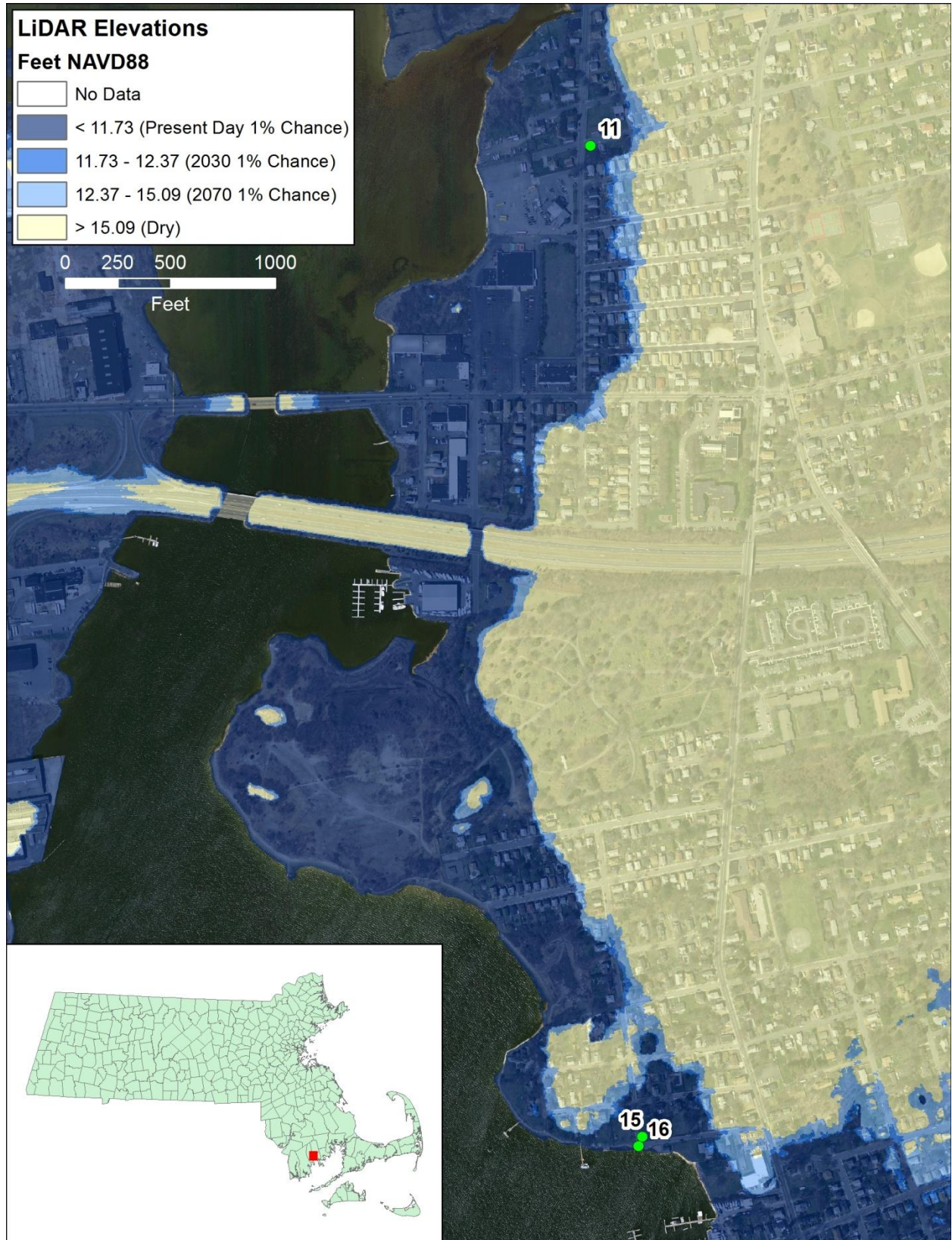


Figure B.3. Site 17 and 29 (Provincetown)

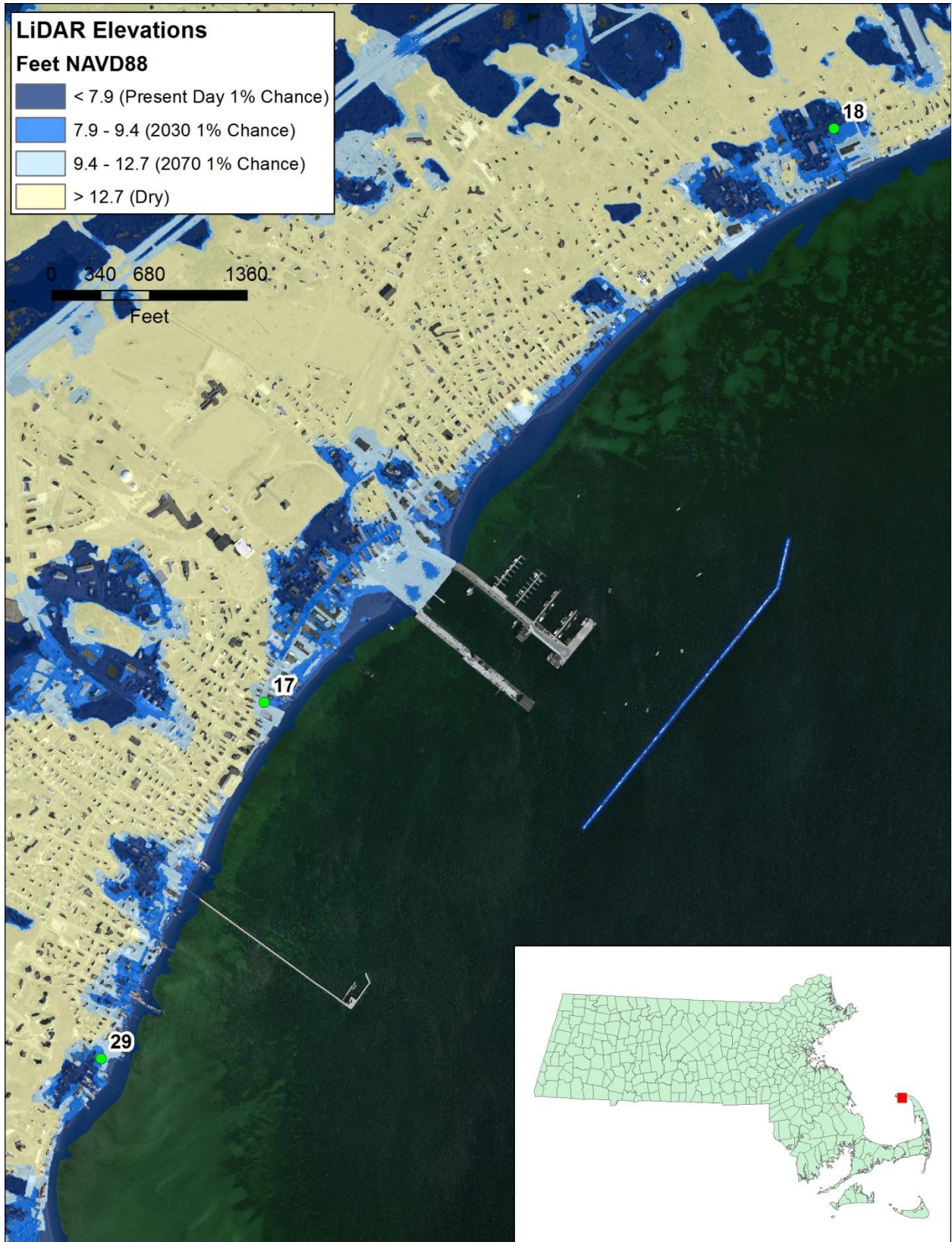


Figure B.4. Sites 19a and 19b (Hull)

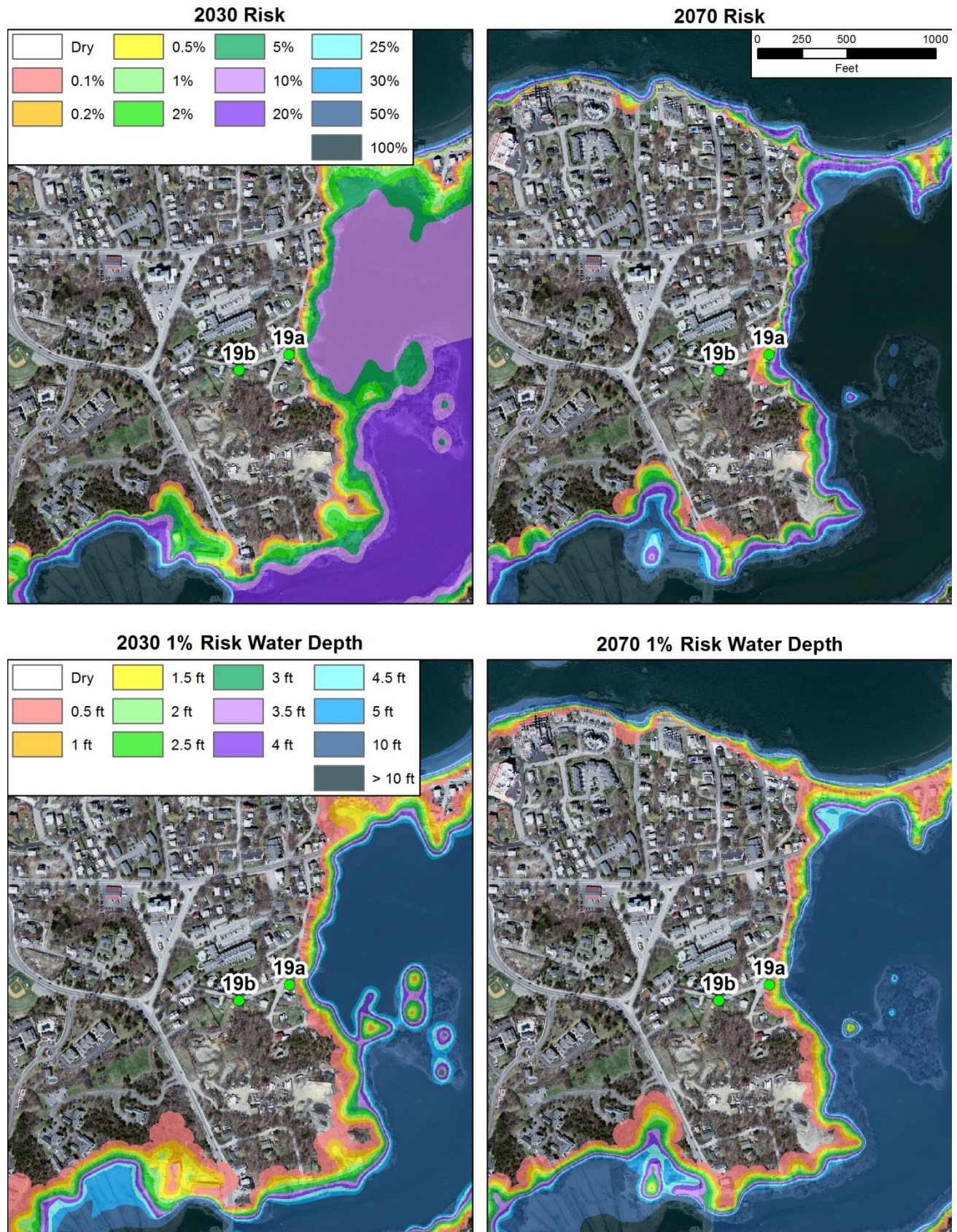


Figure B.5. Sites 22a, 22b and 22c (Scituate)

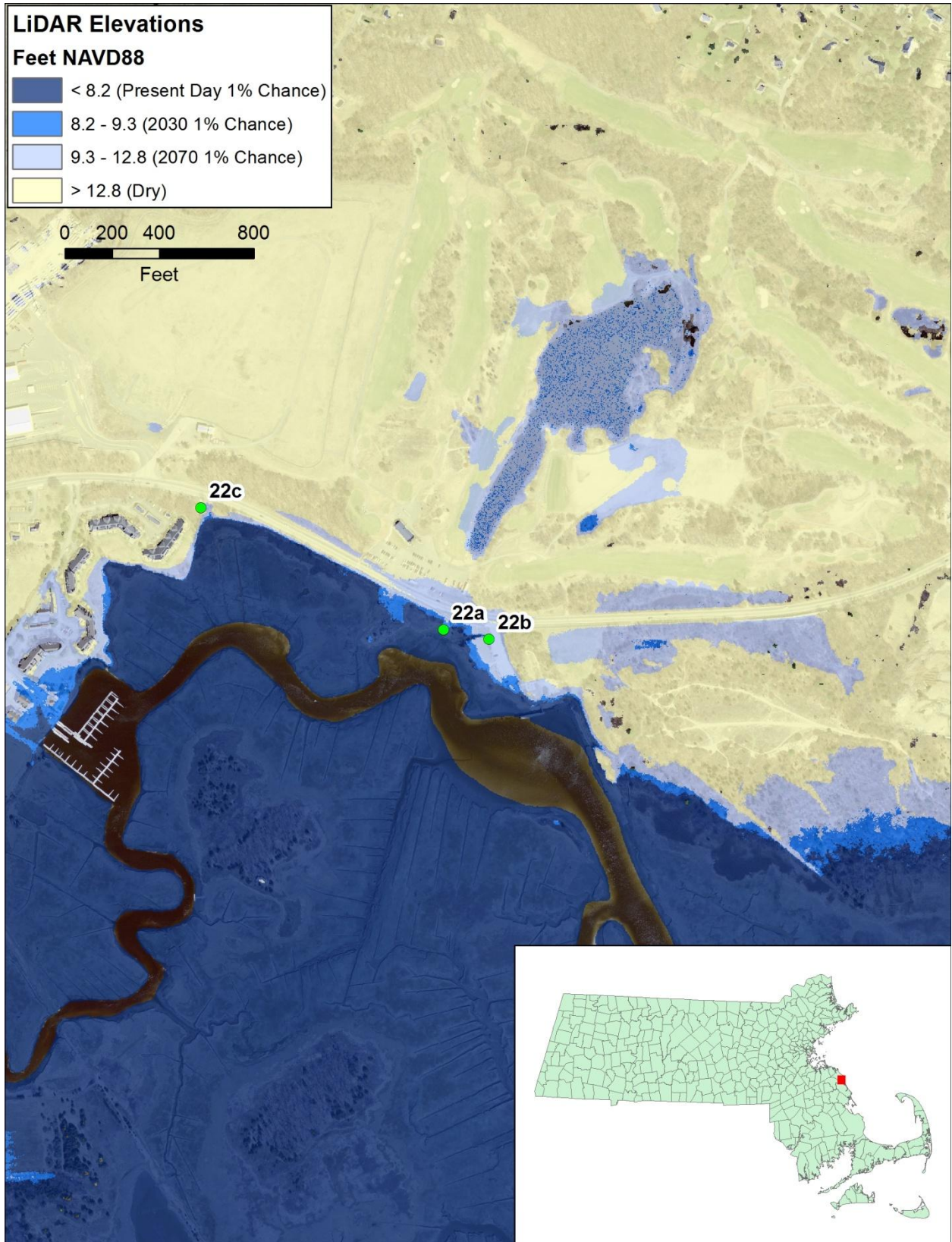


Figure B.6. Sites 25, 26, 27 and 28 (Sandwich)

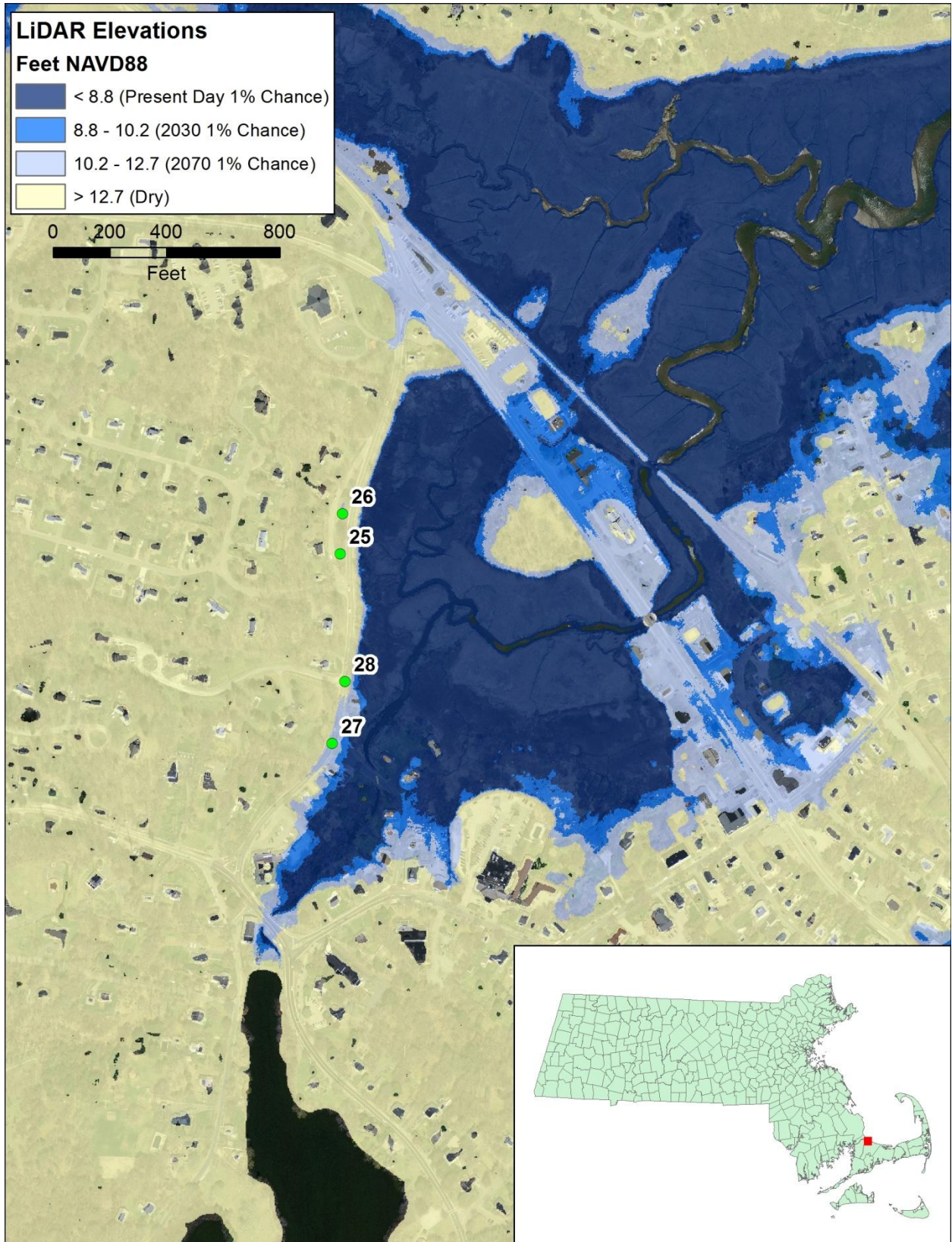


Figure B.7. Site 30 (Oak Bluffs)

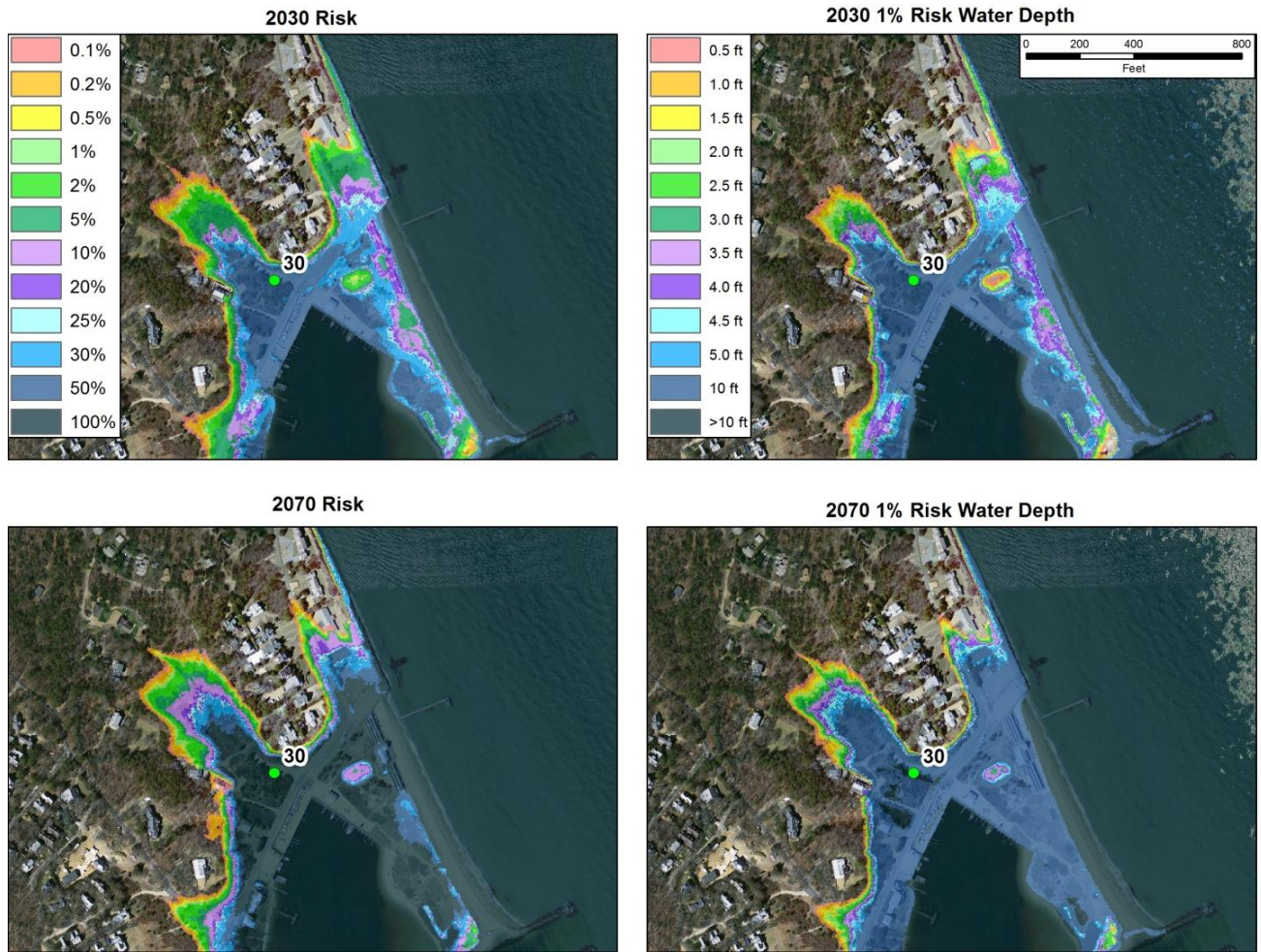


Figure B.8. Sites 31a, 31b, 31c, and 31d (Marion)

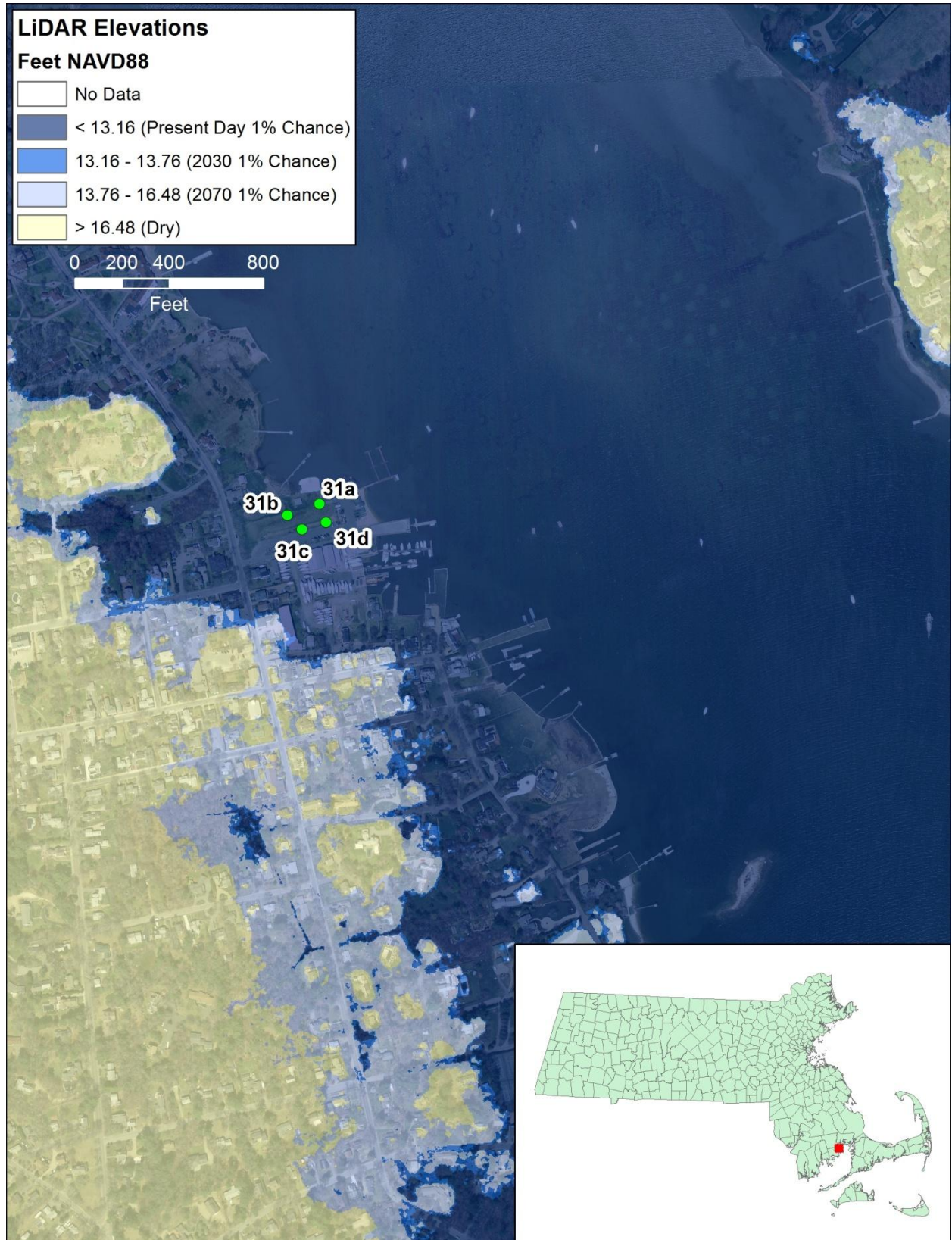


Figure B.9. Sites 32a and 32b (Bourne)

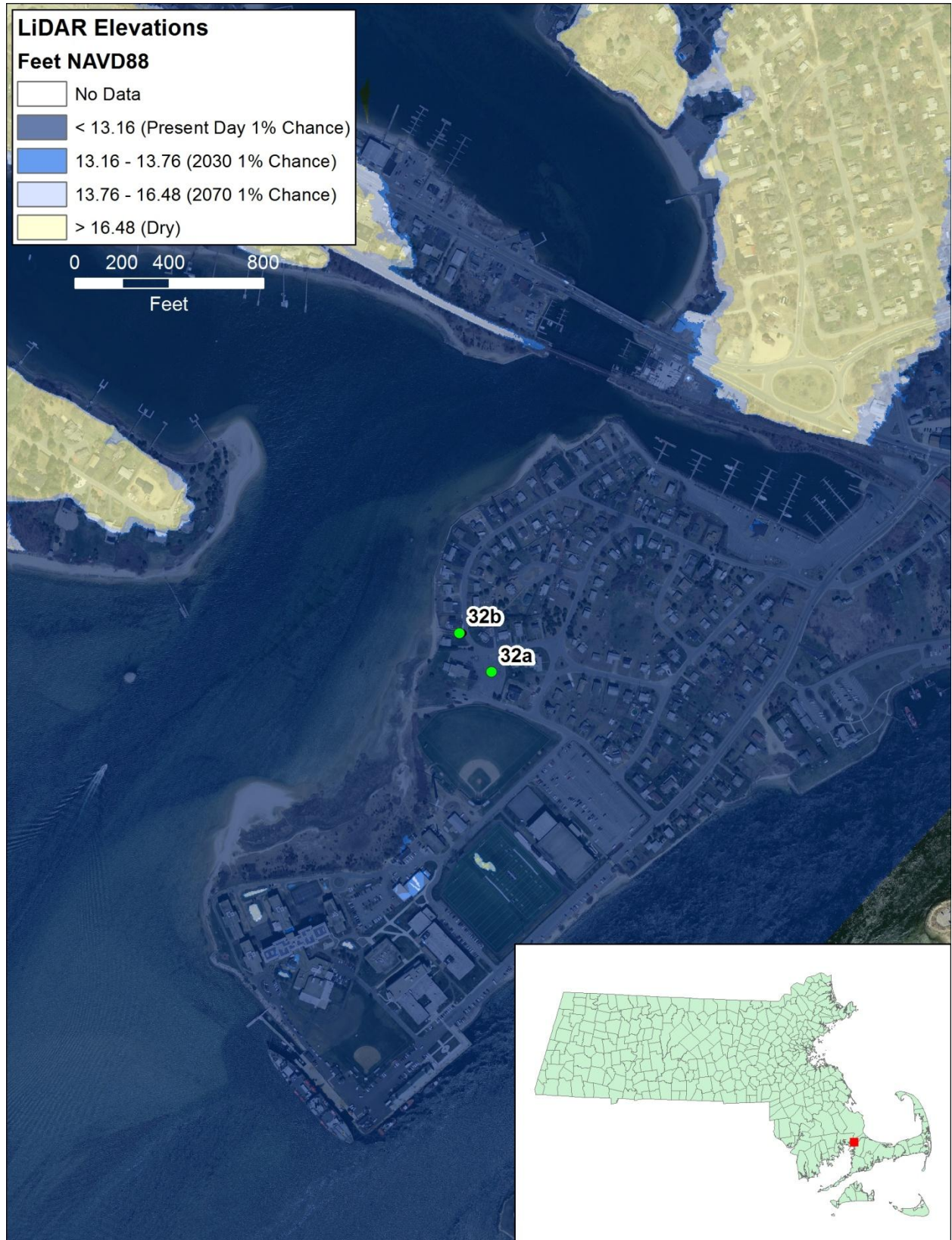


Figure B.10. Sites 33, 34, 35 and 37 (Kingston, Duxbury and Plymouth)

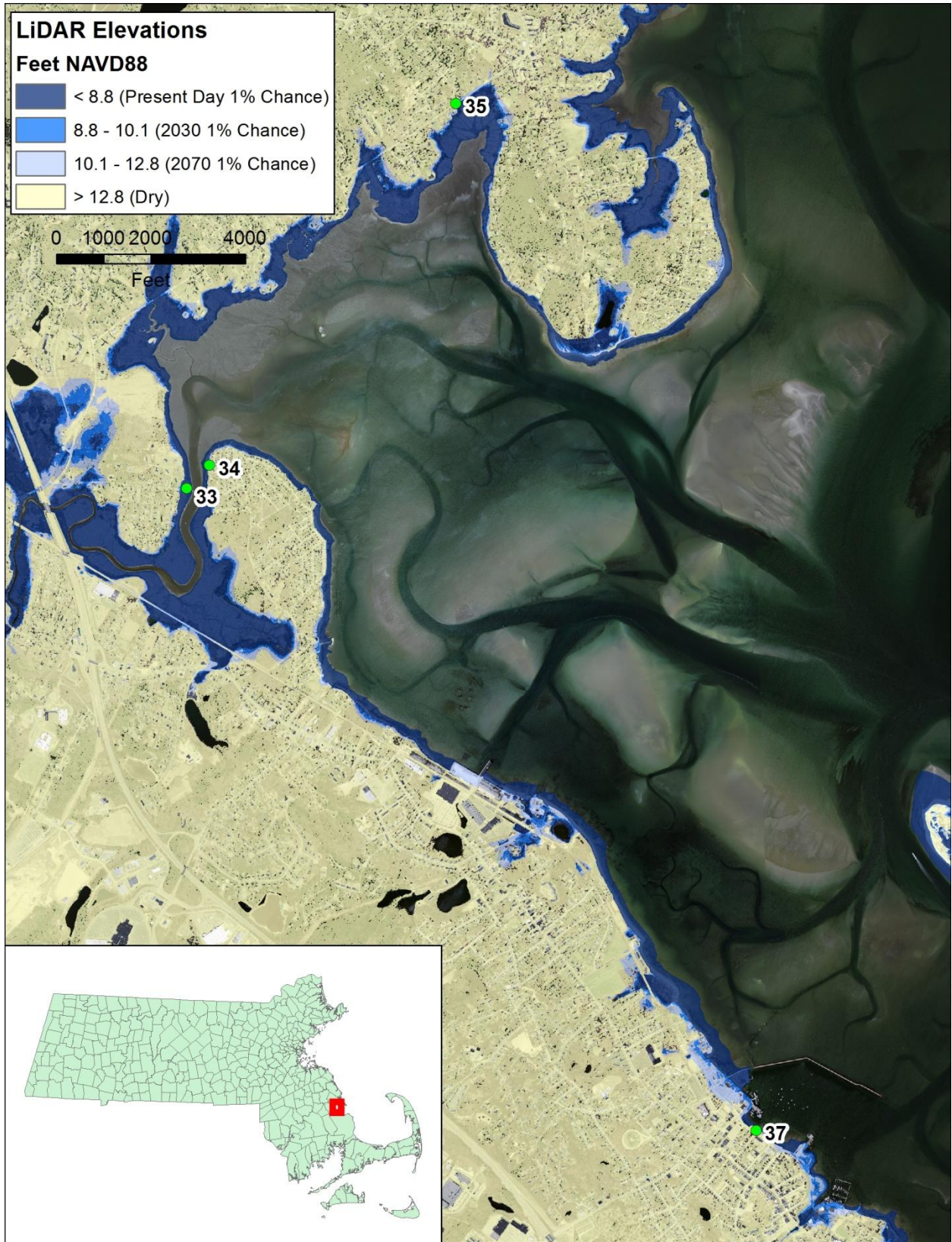


Figure B.11. Site 41 (Chelsea)

