

## **Appendix E**

Industry-Based Survey  
for  
Gulf of Maine Cod  
Pilot Study

Evaluation of the Gulf of Maine Rolling Closures



# Industry-Based Survey for Gulf of Maine Cod

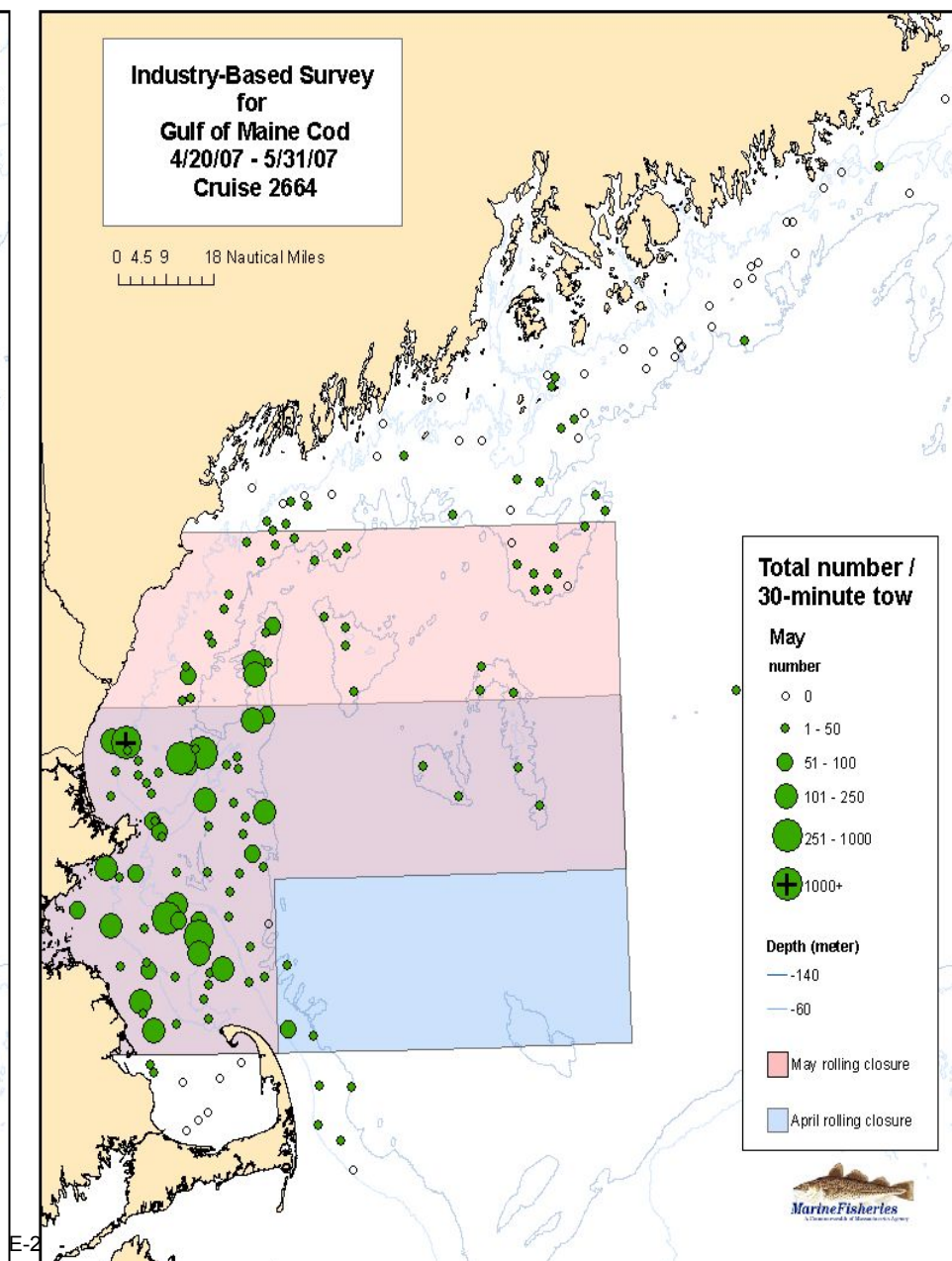
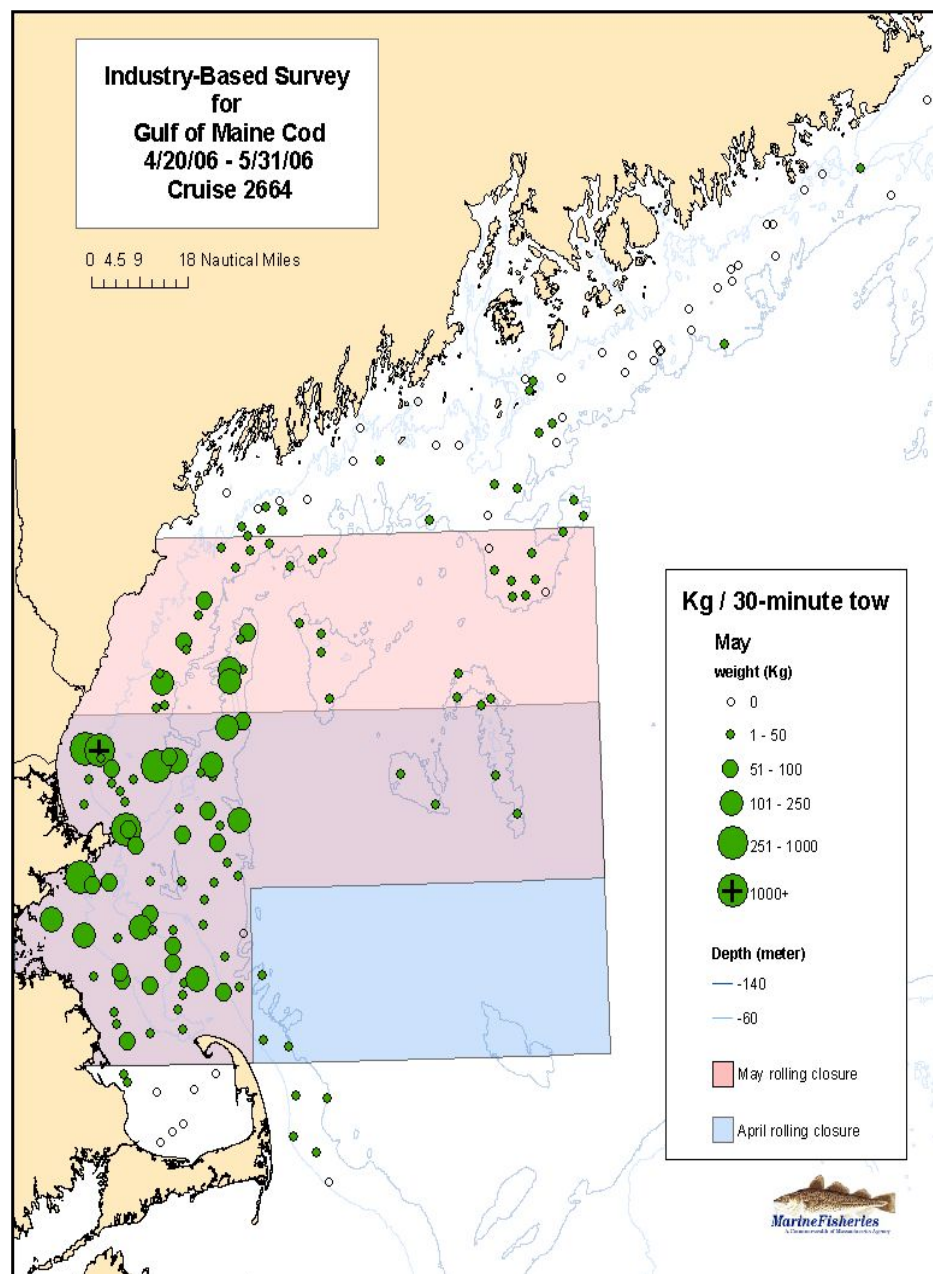
2006 - 2007 Survey Results

## Atlantic Cod

Spatial and temporal distribution of total weight and total number

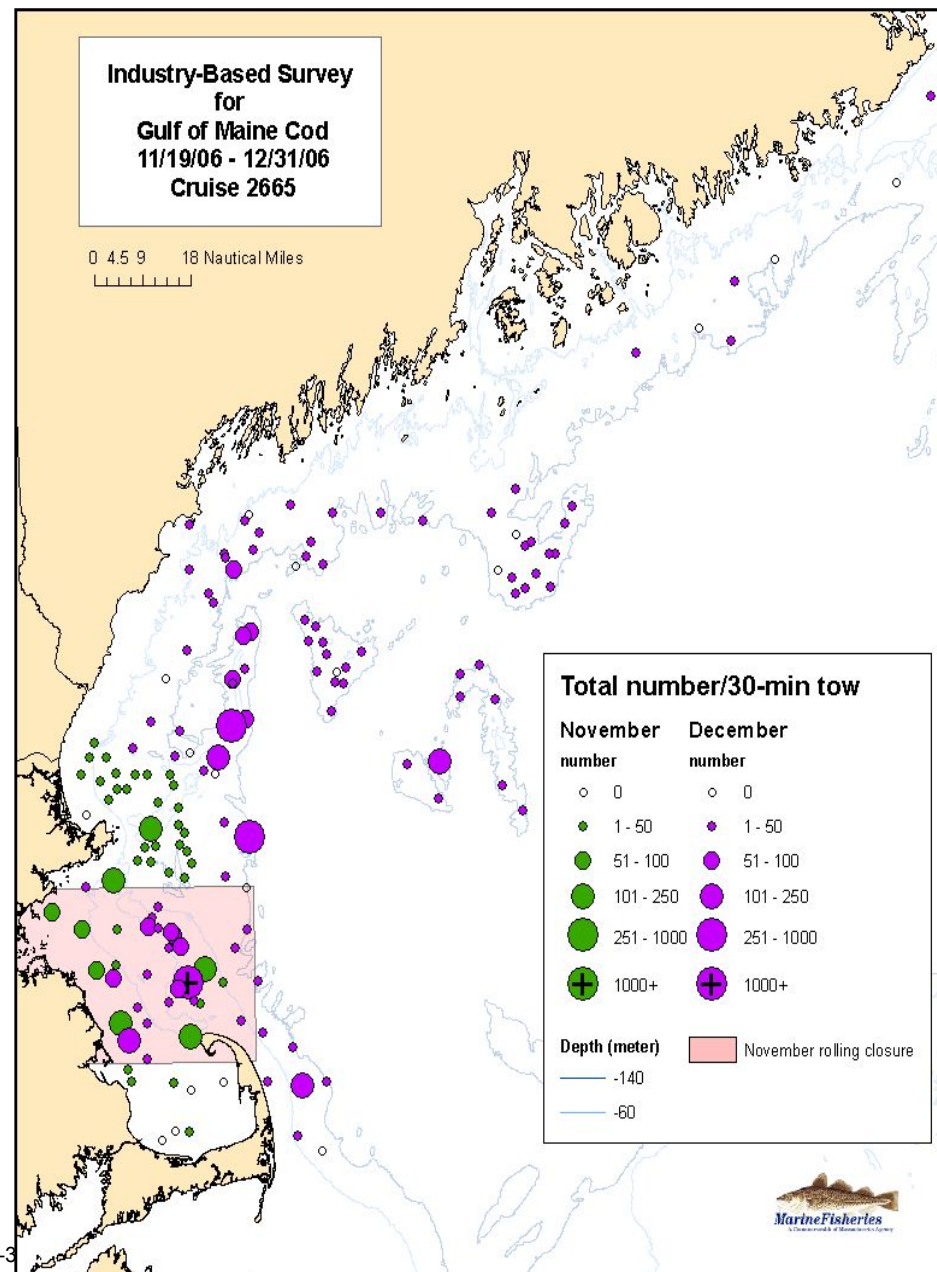
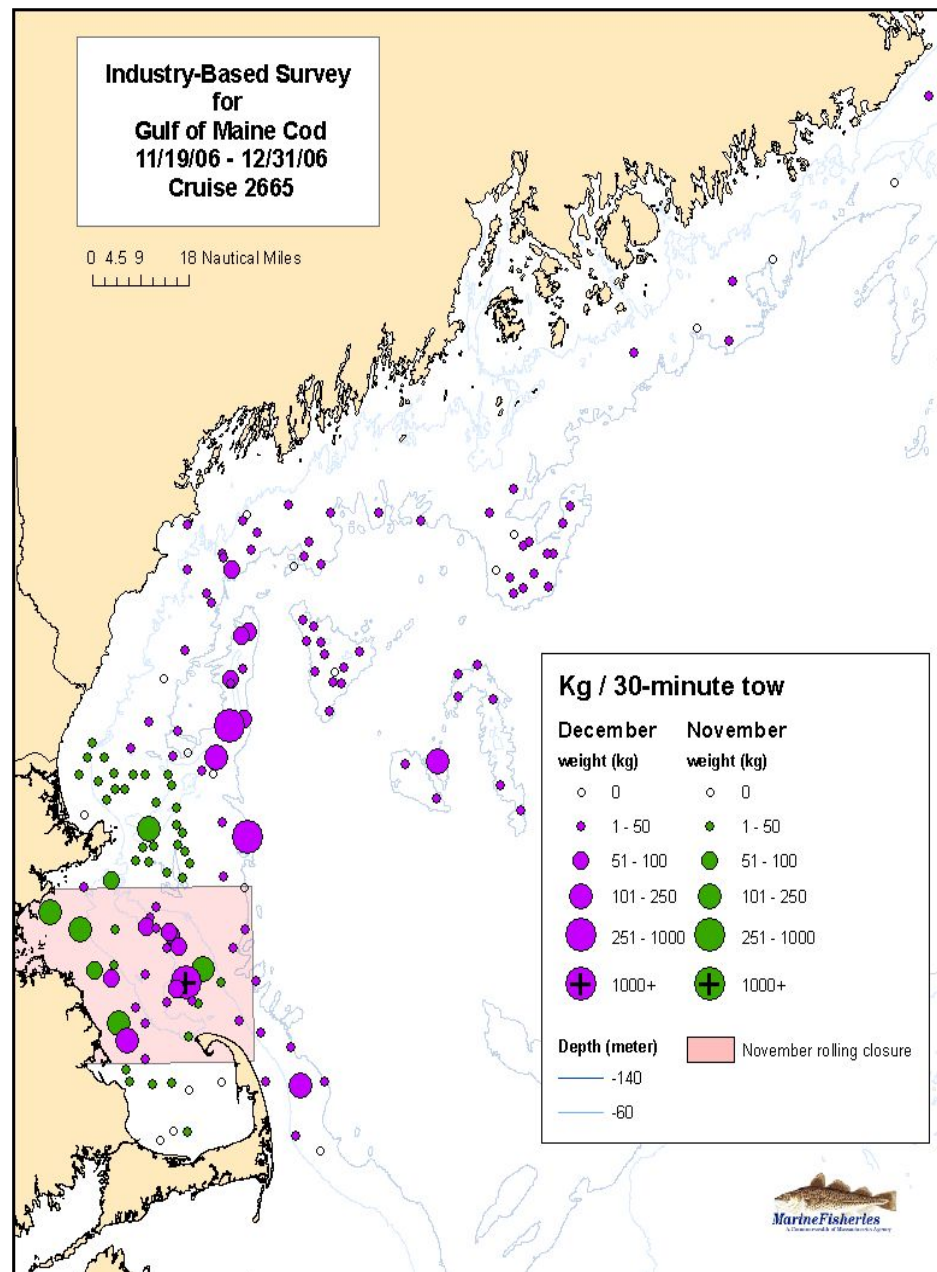
# Catch Weight (kg) and Number per Tow

Survey results during April and May rolling closures. Weights and number standardized to 30 minutes in duration.



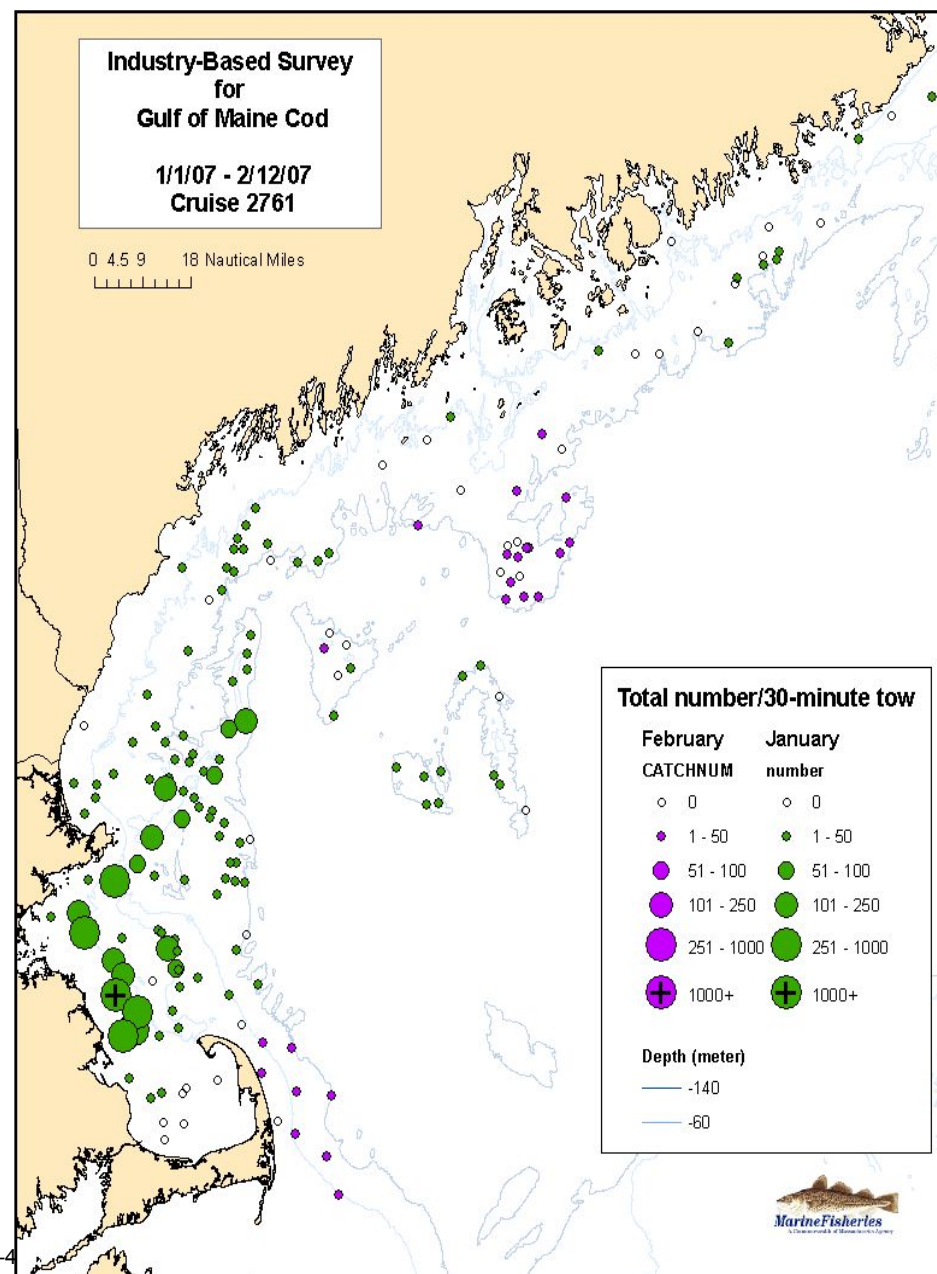
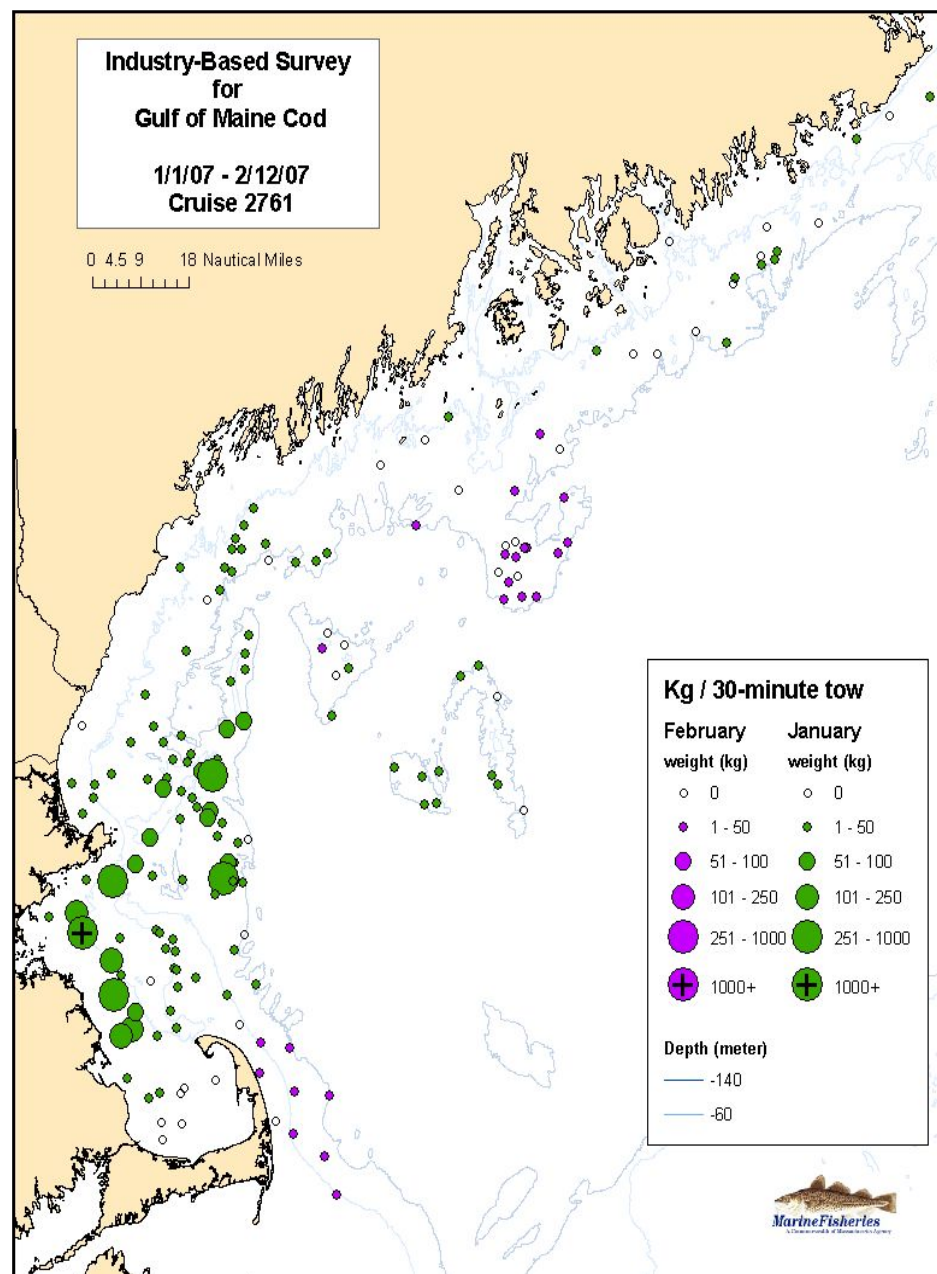
# Catch Weight (kg) and Number per Tow

Survey results during November rolling closure. Weights and numbers standardized to 30 minutes in duration.



# Catch Weight (kg) and Number per Tow

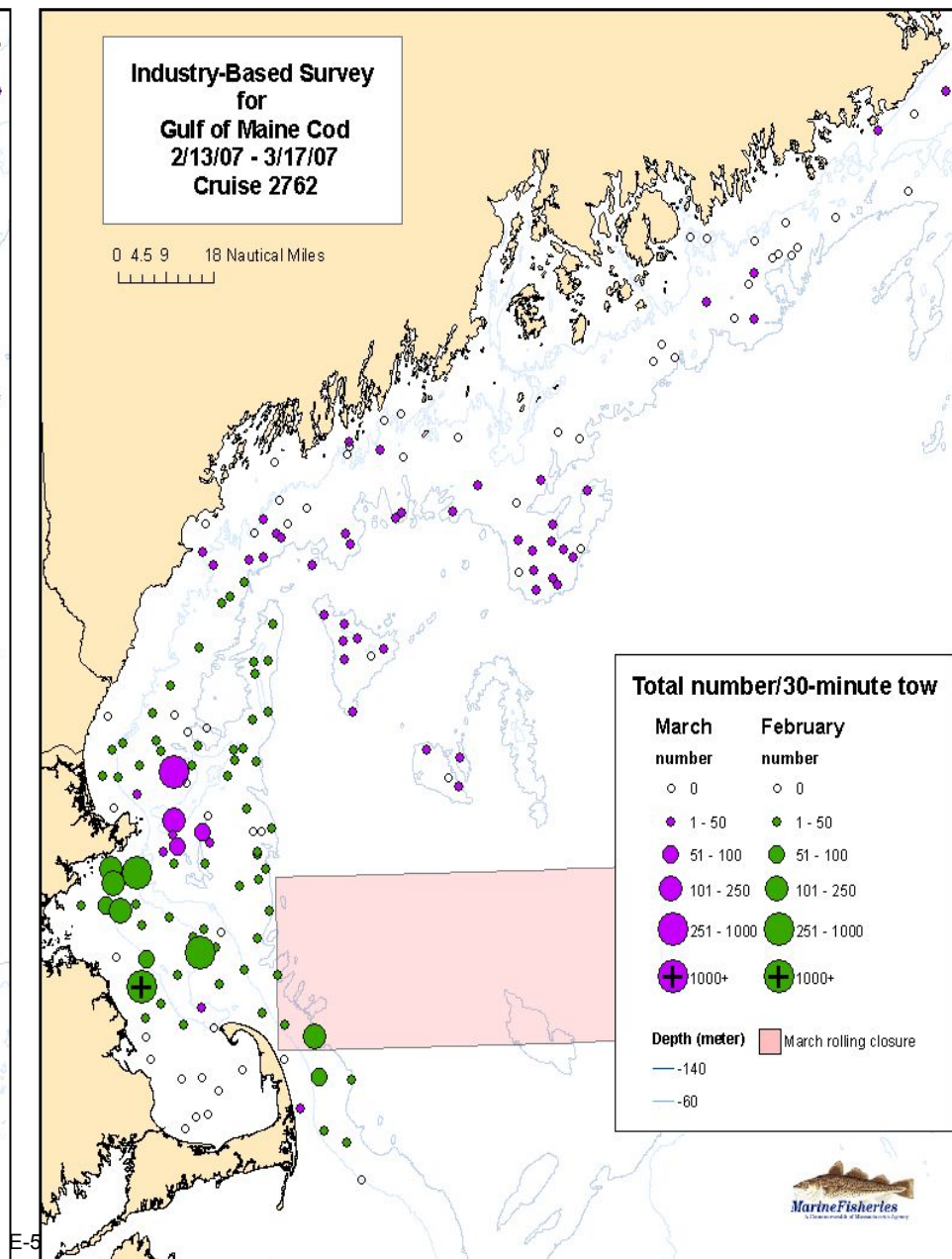
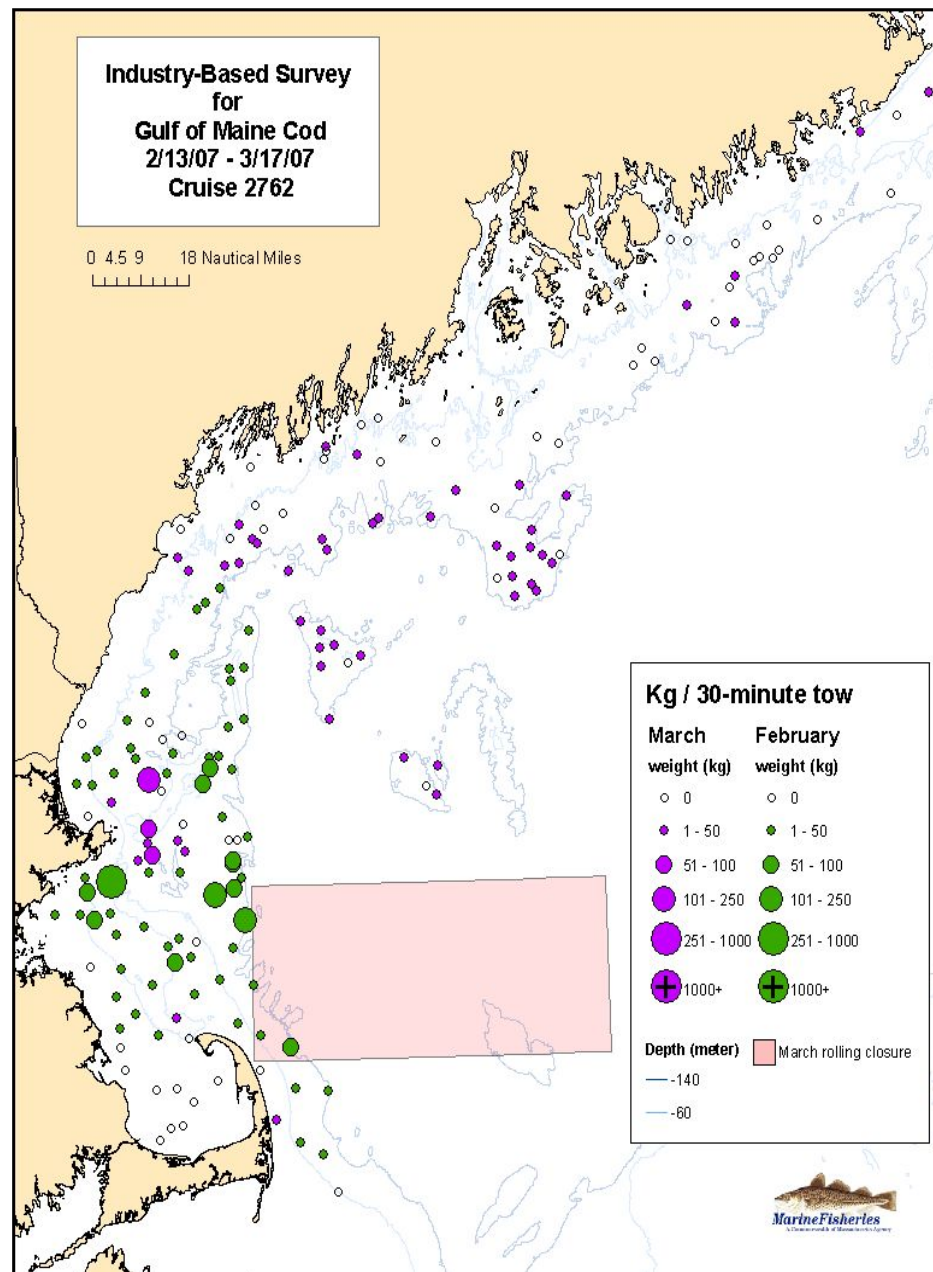
Weights and numbers standardized to 30 minutes in duration.





# Catch Weight (kg) and Number per Tow

\* Survey results during March rolling closure. Weights and numbers standardized to 30 minutes in duration.



# Industry-Based Survey for Gulf of Maine Cod

2006 - 2007 Survey Results

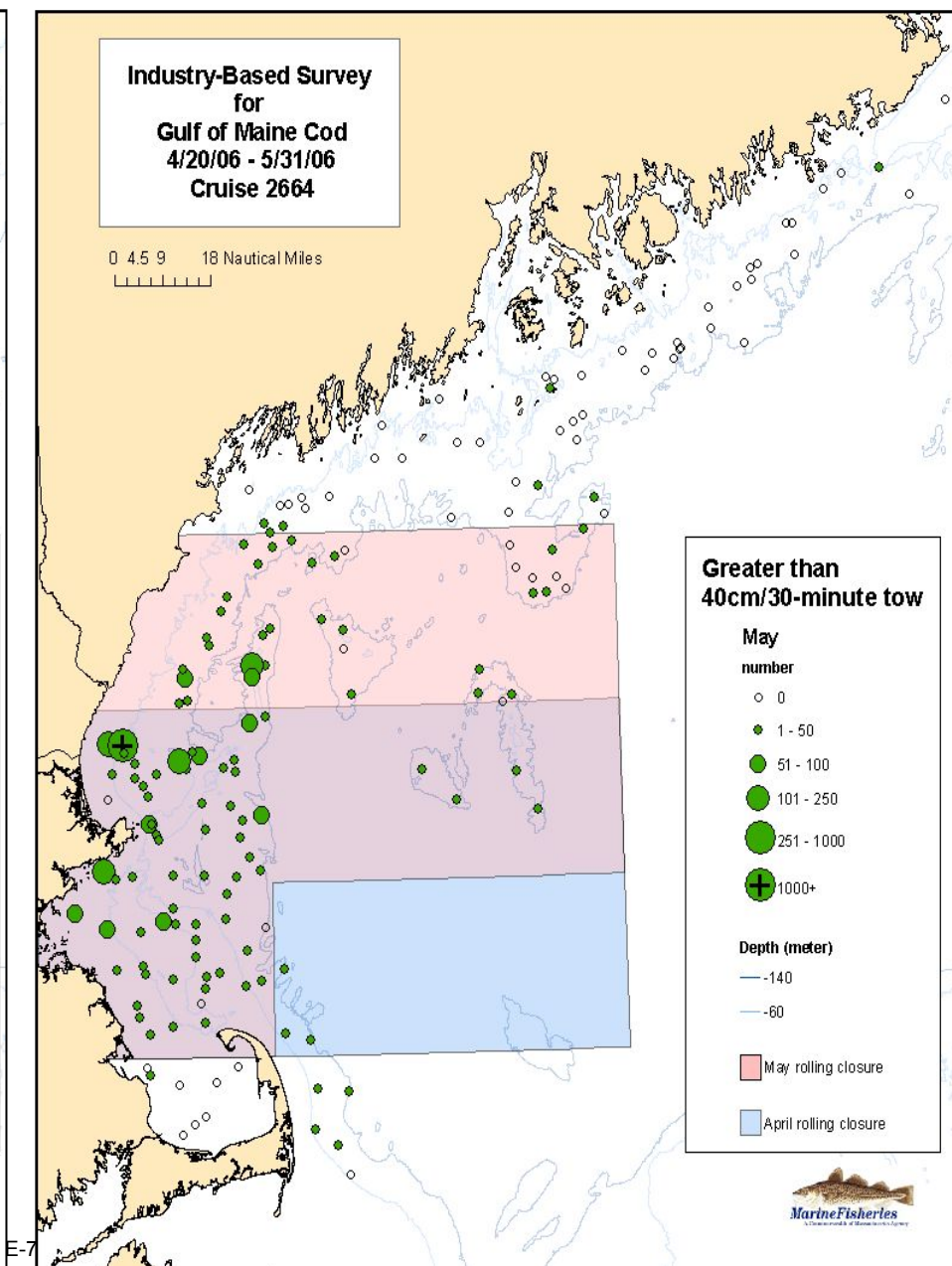
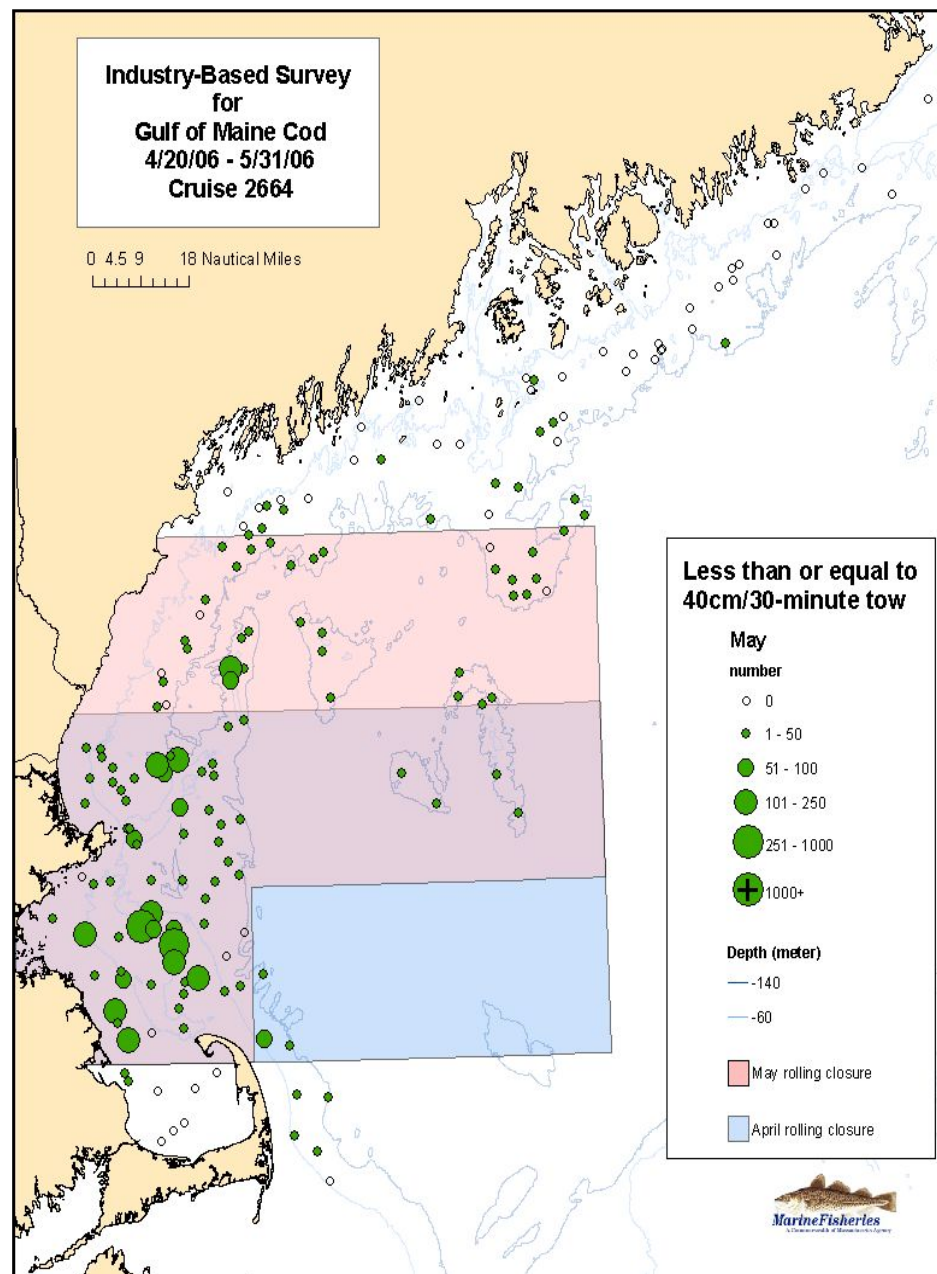
## Atlantic Cod

Spatial and temporal distribution by number less than or equal to 40 cm (approximates juveniles) and number greater than 40 cm (approximates adults)



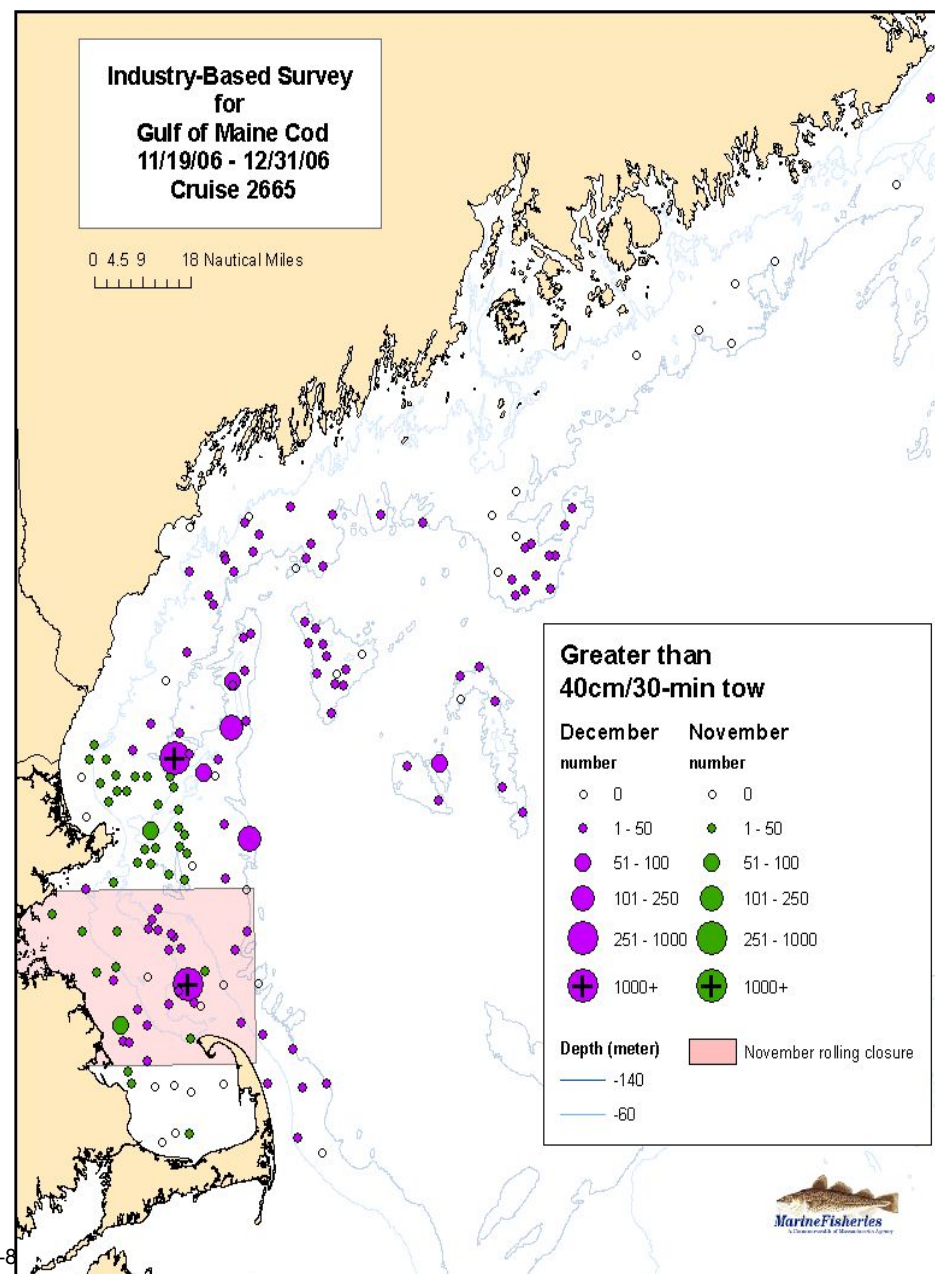
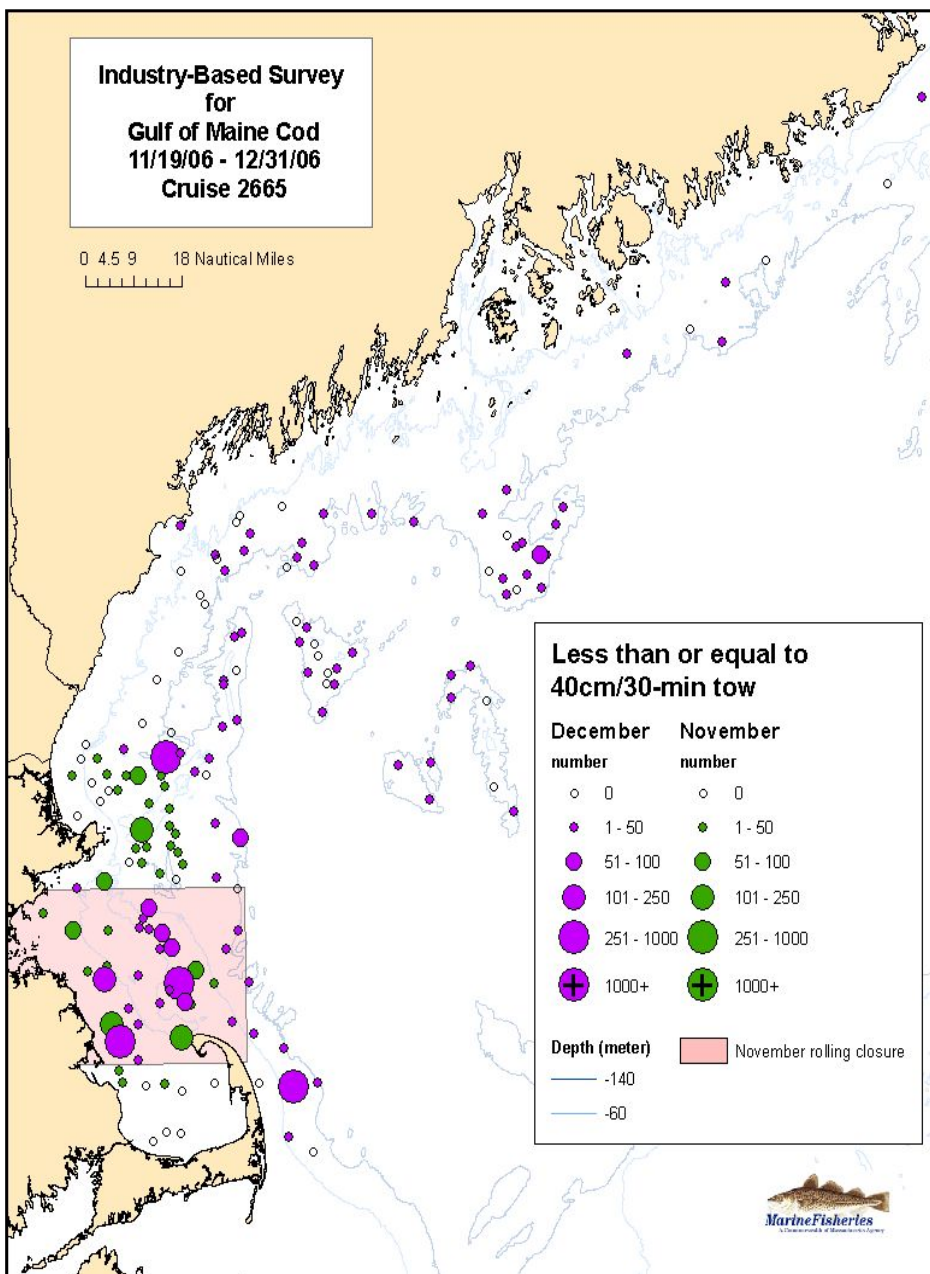
# Number Less Than or Equal 40 cm and Number Greater Than 40 cm per Tow

\* Survey results during April and May rolling closure periods. Numbers standardized to 30 minutes in duration.



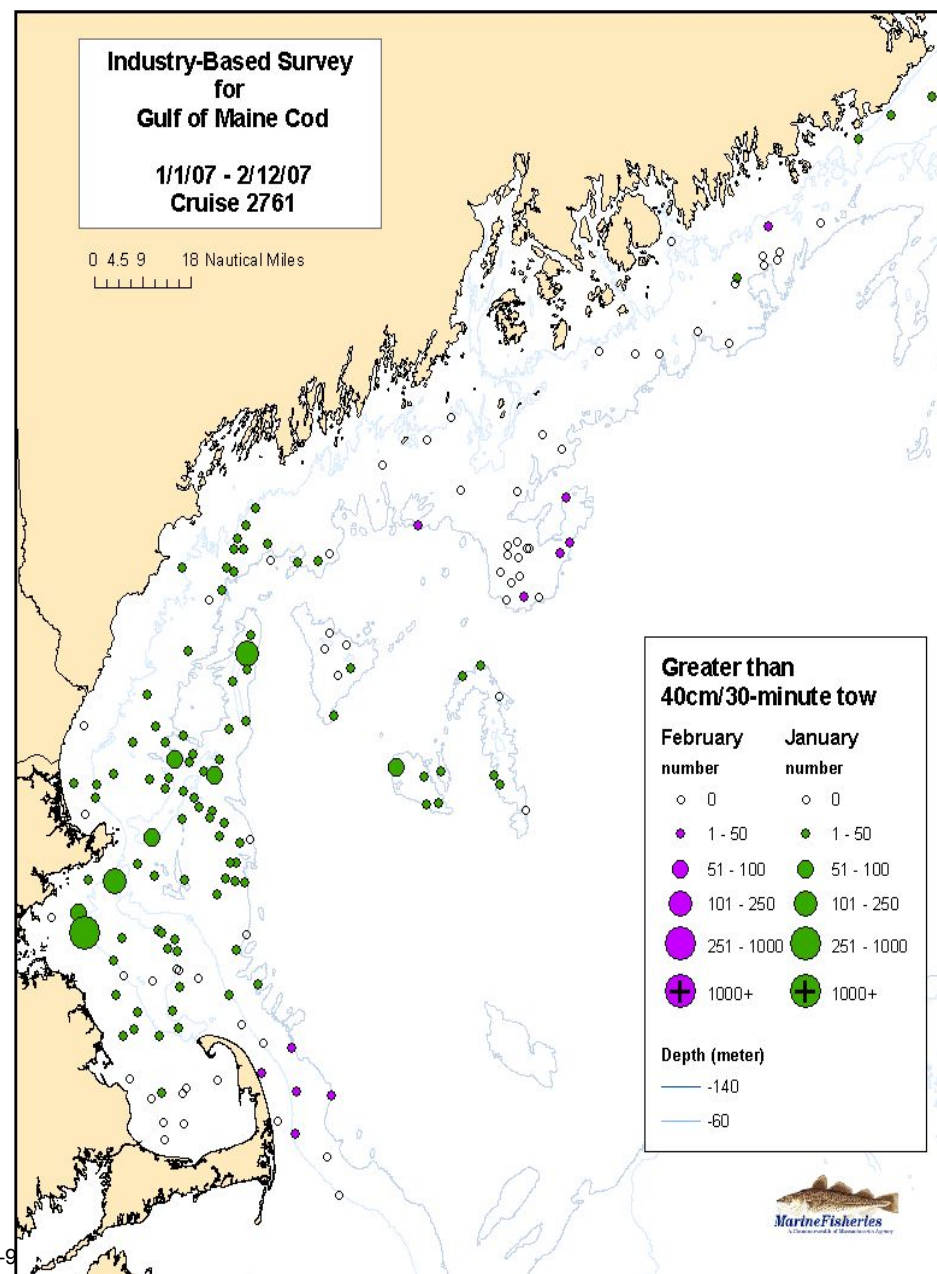
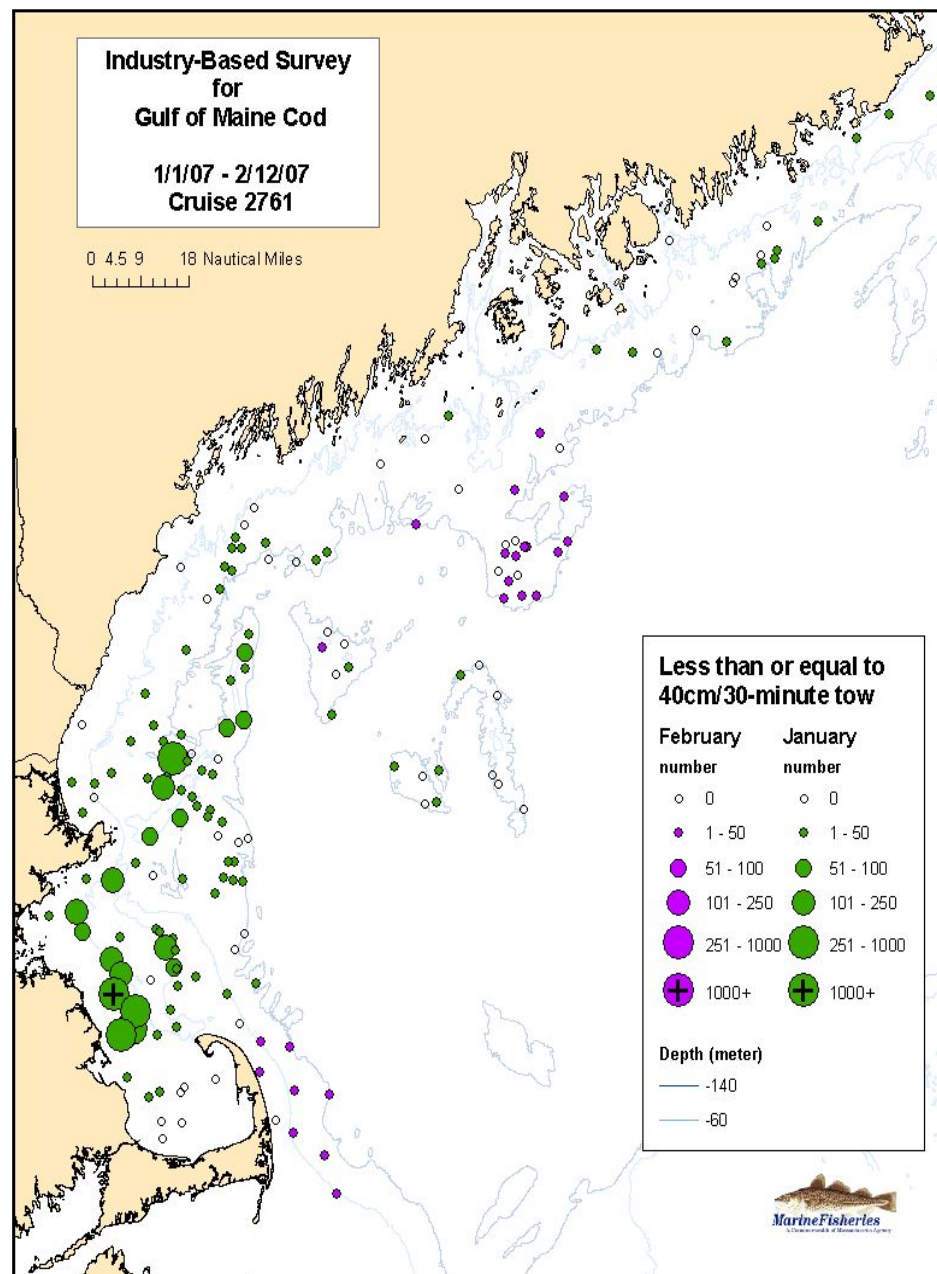
# Number Less Than or Equal 40 cm and Number Greater Than 40 cm per Tow

\* Survey results during November rolling closure period. Numbers standardized to 30 minutes in duration.



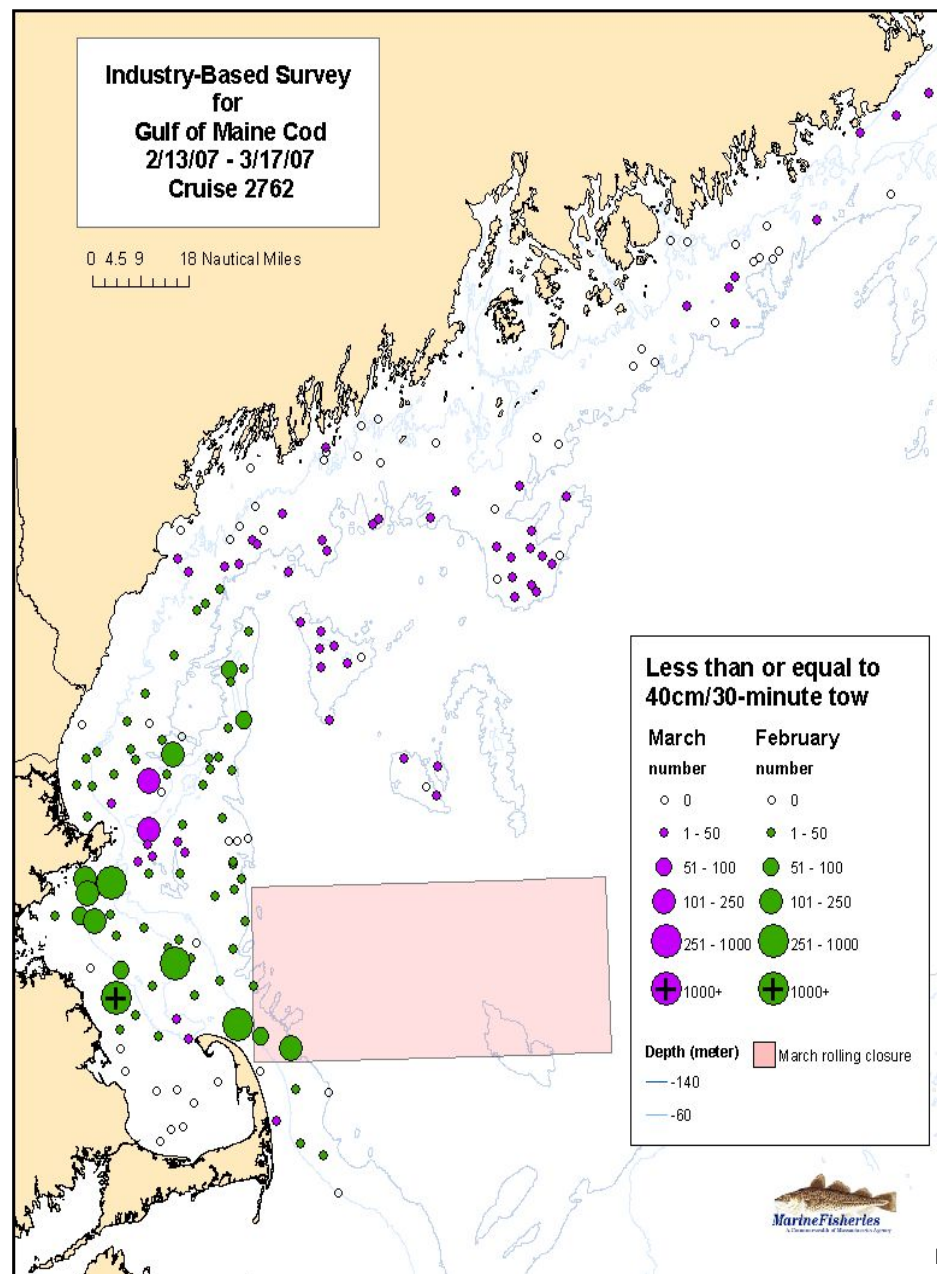
# Number Less Than or Equal 40 cm and Number Greater Than 40 cm per Tow

\* Numbers standardized to 30 minutes in duration.

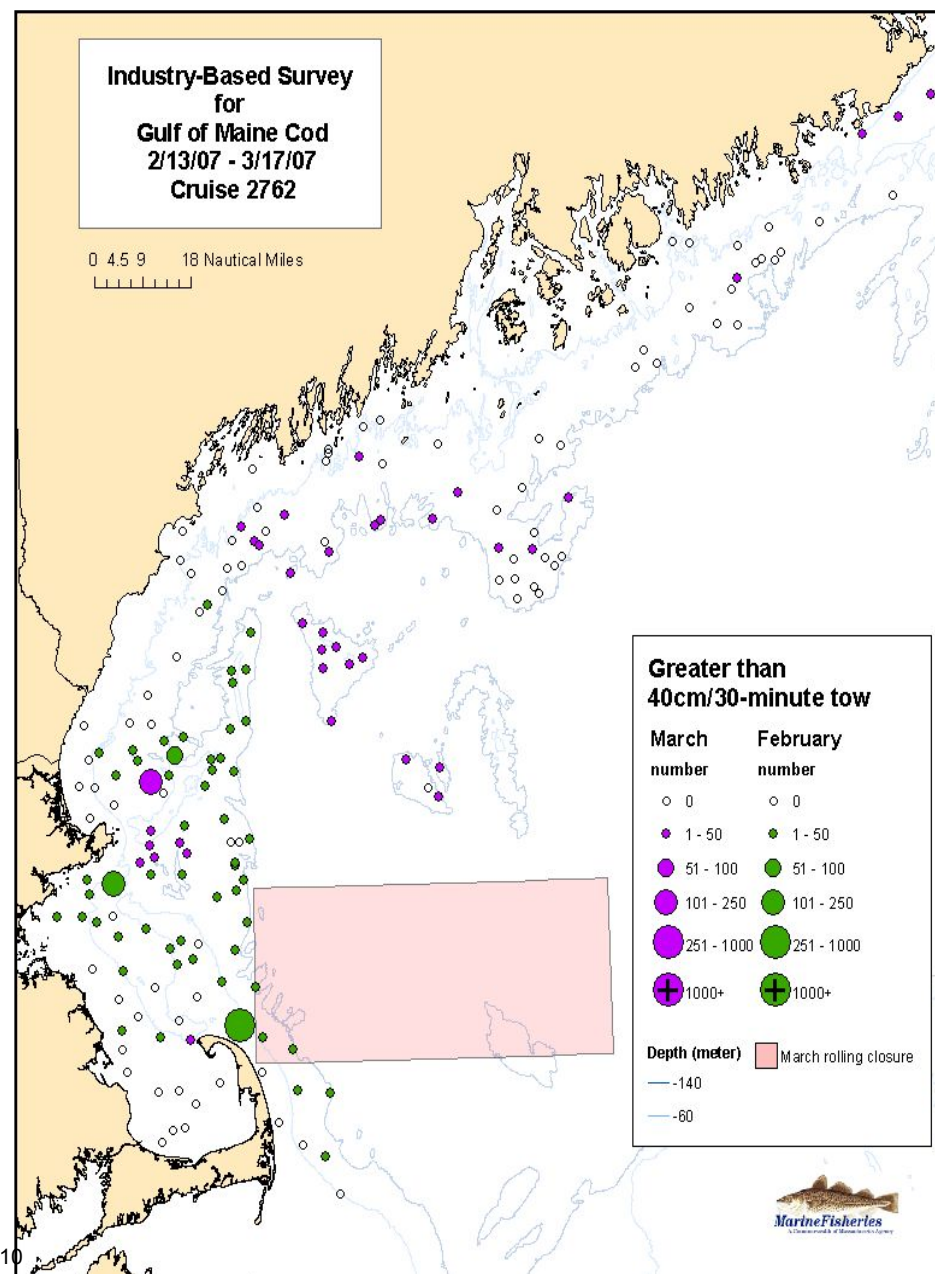


# Number Less Than or Equal 40 cm and Number Greater Than 40 cm per Tow

\* Survey results during March closure period. Numbers standardized to 30 minutes in duration.



E-10



# Industry-Based Survey for Gulf of Maine Cod

2006 - 2007 Survey Results

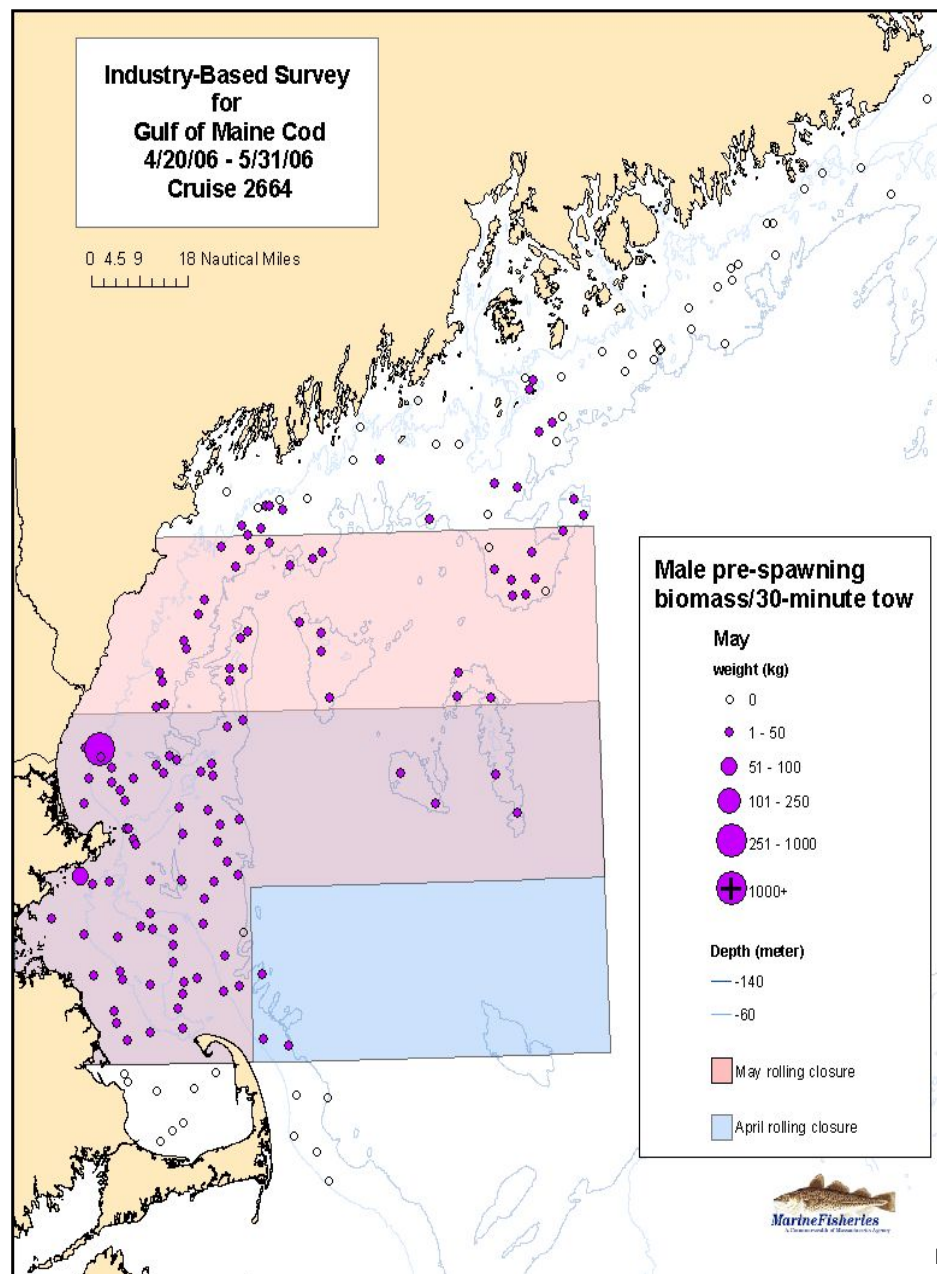
## Atlantic Cod

Spatial and temporal distribution by sex of estimated  
prespawning condition biomass (developing fish)

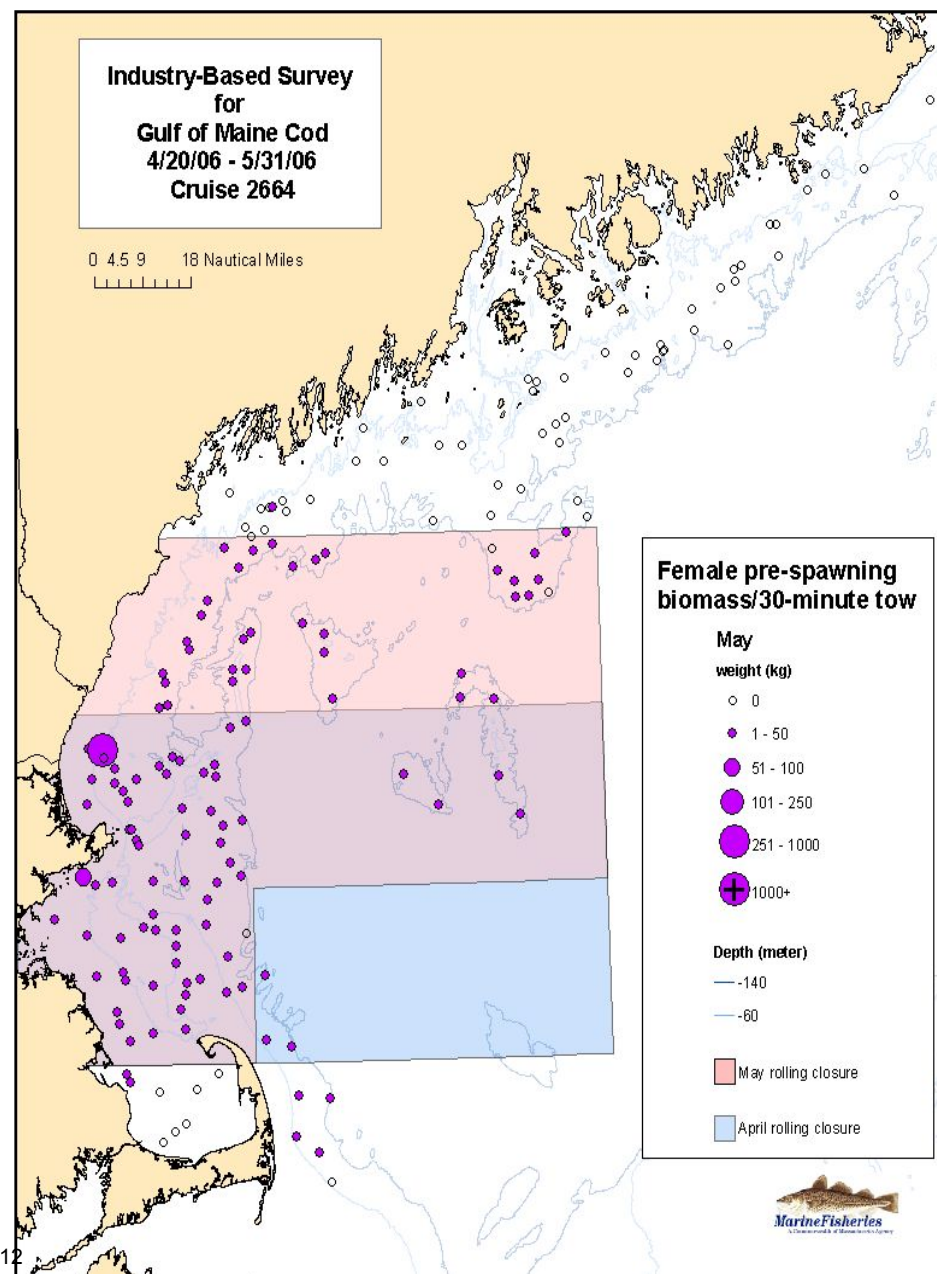


# Estimated Biomass (kg) of Prespawning Males and Females

\* Survey results during May rolling closure period. Weights standardized to 30 minutes in duration.

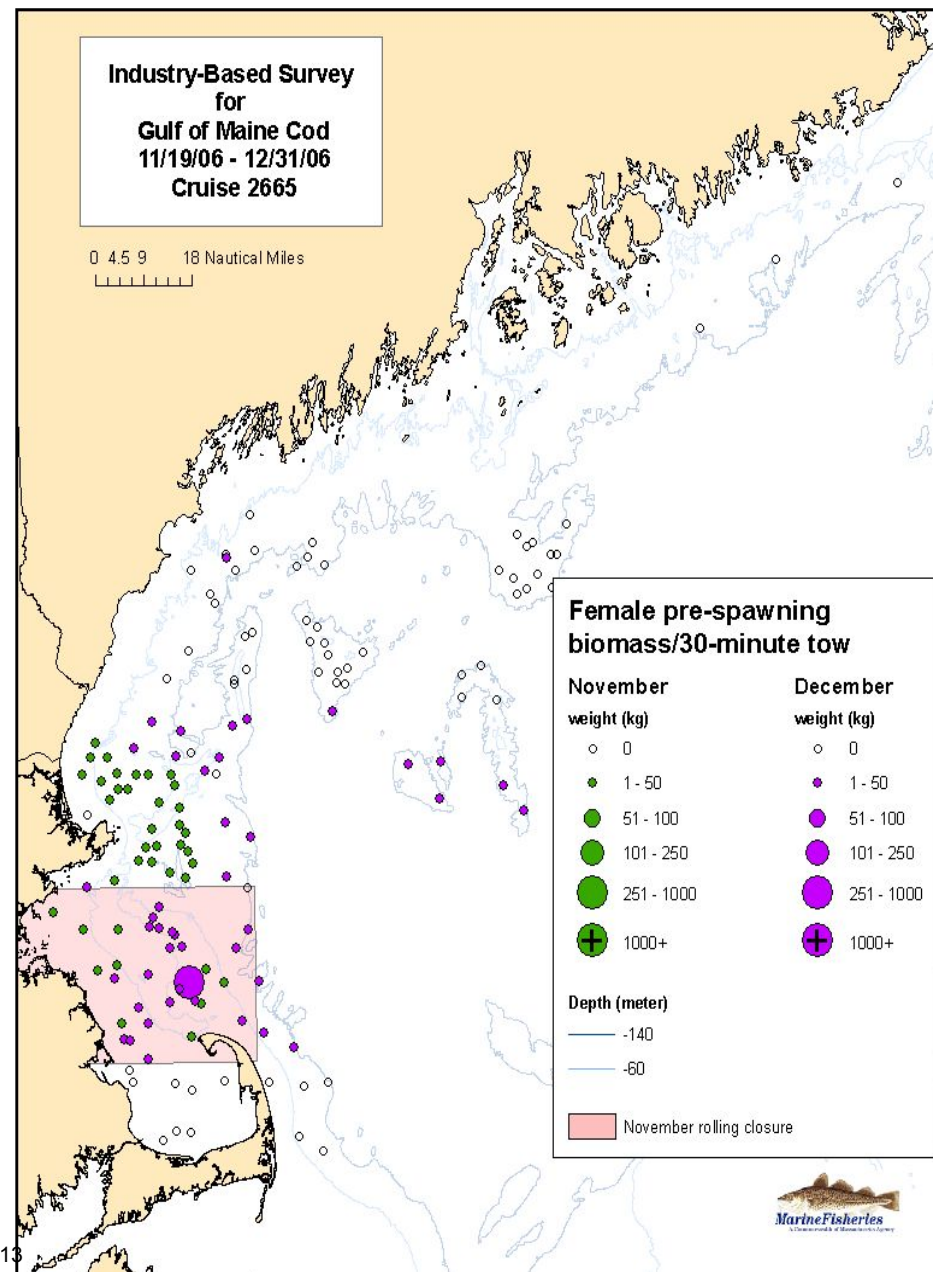
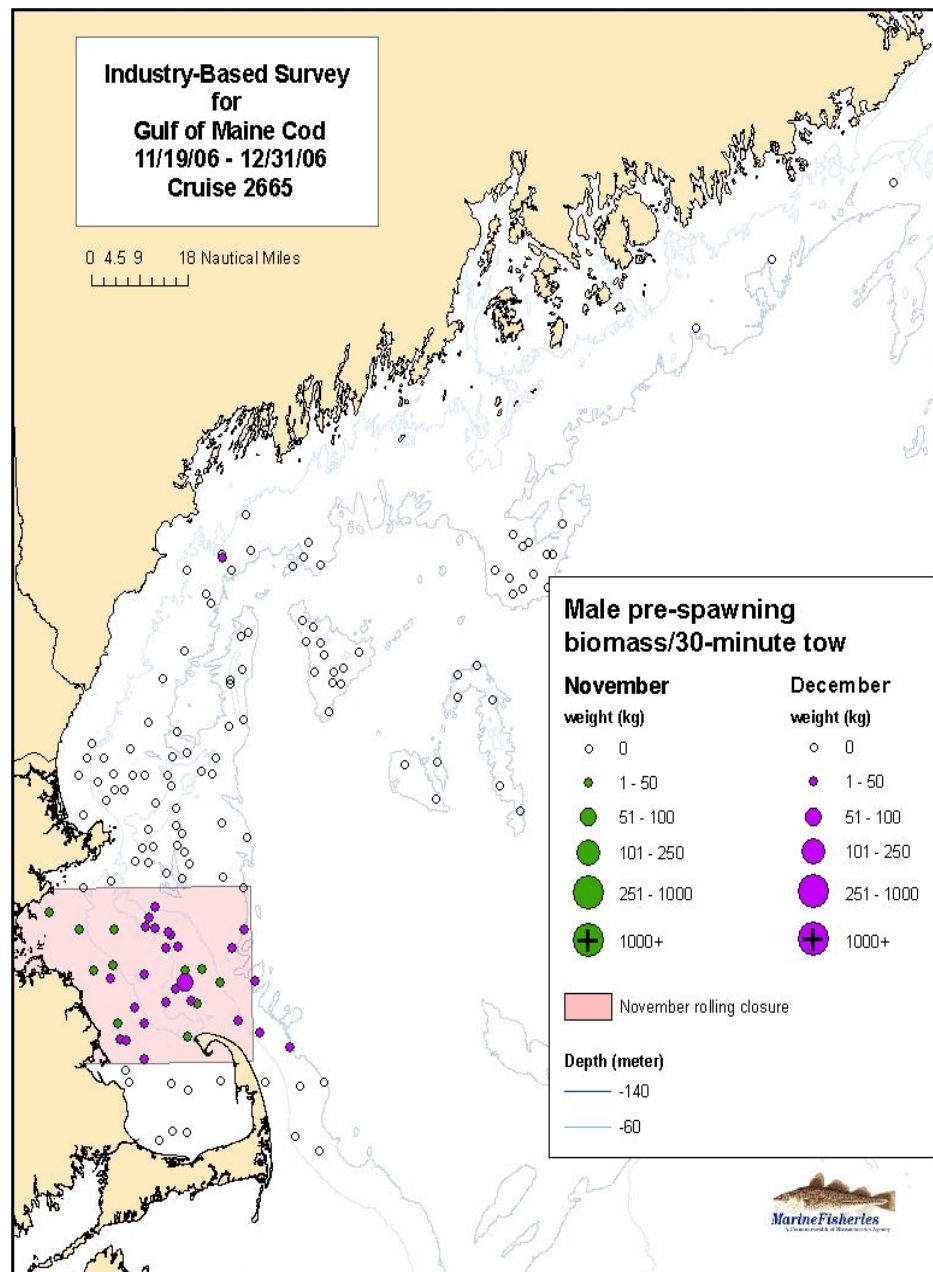


E-12



# Estimated Biomass (kg) of Prespawning Males and Females

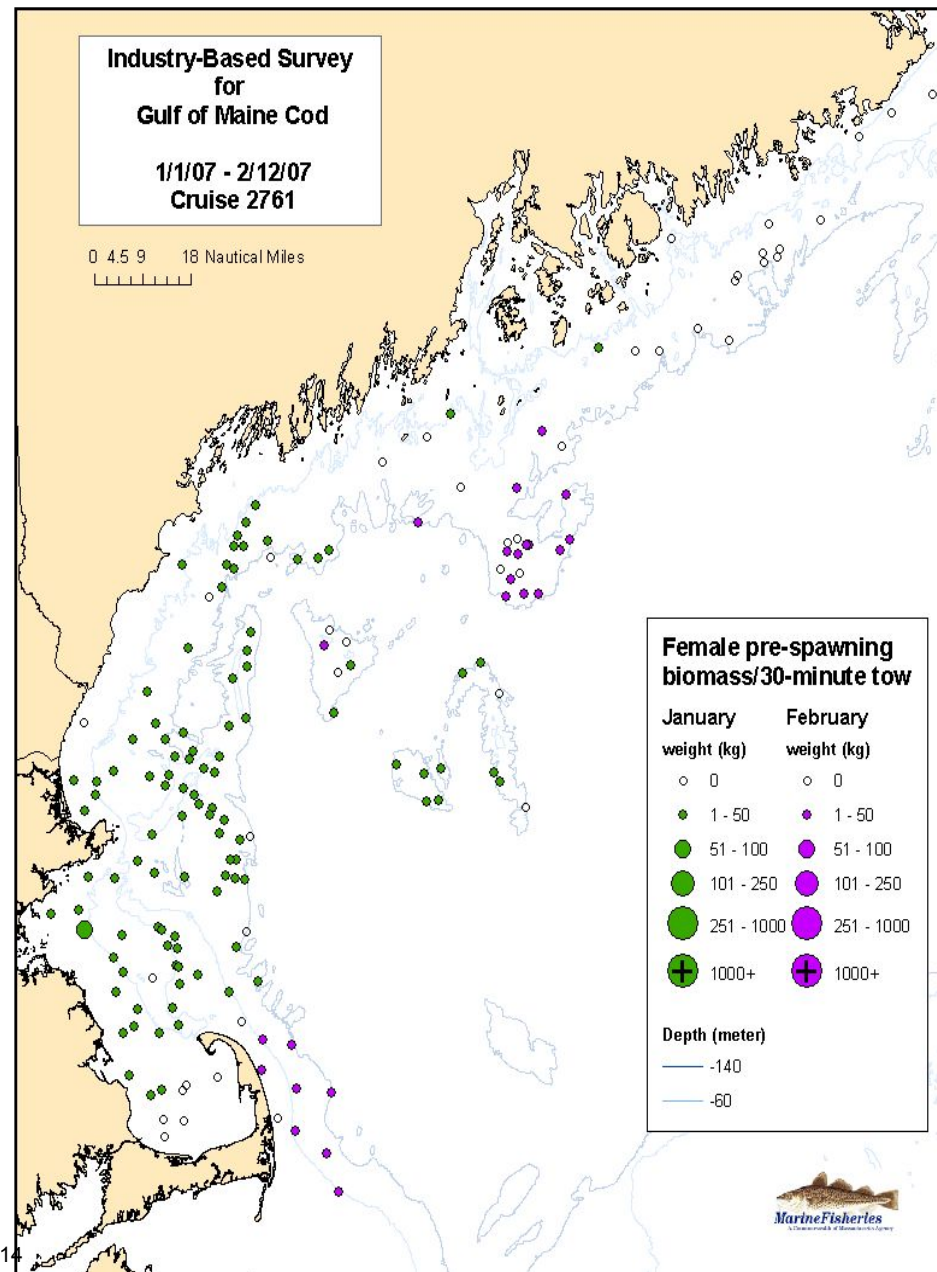
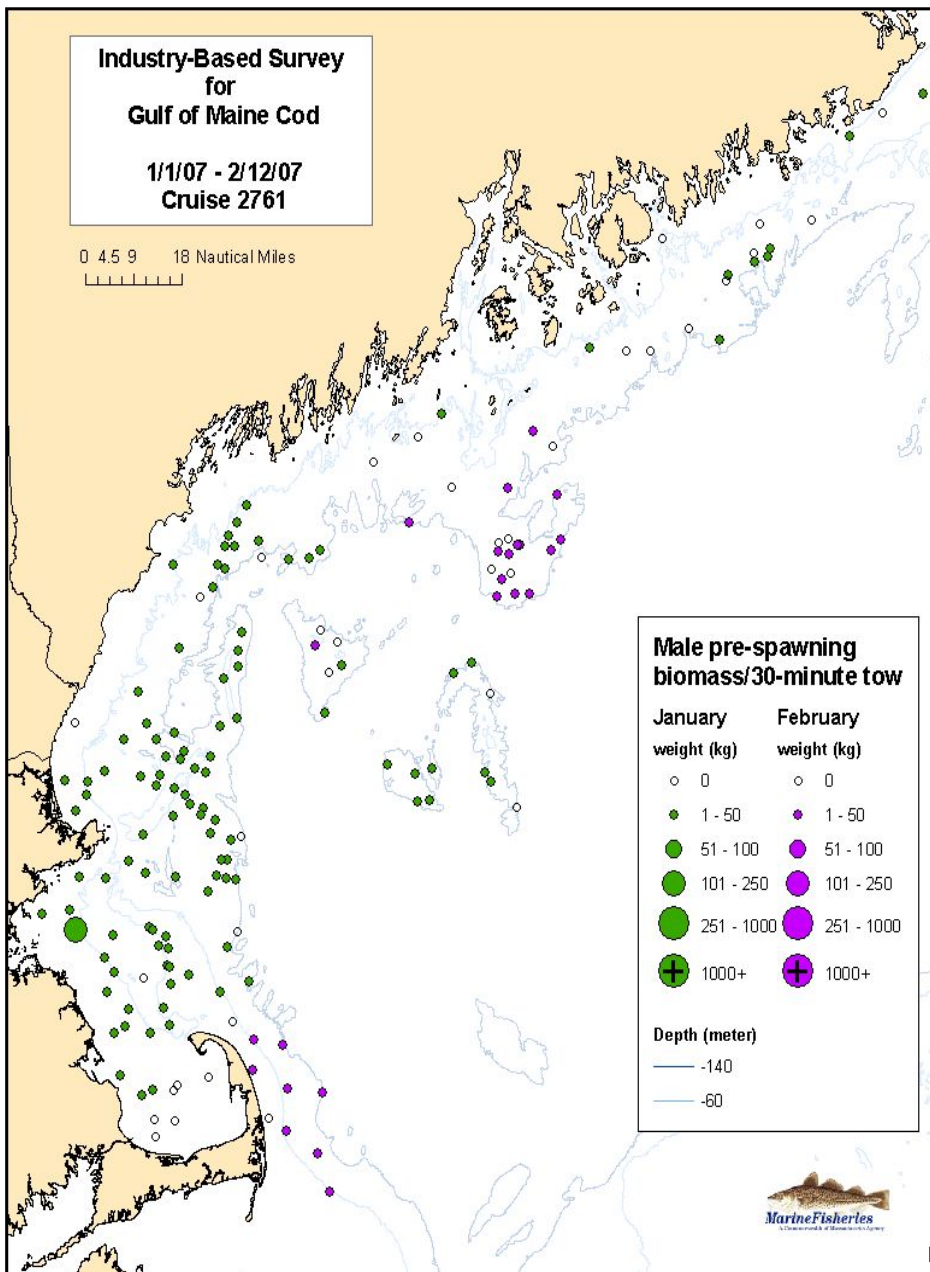
\* Survey results during November rolling closure period. Weights standardized to 30 minutes in duration.





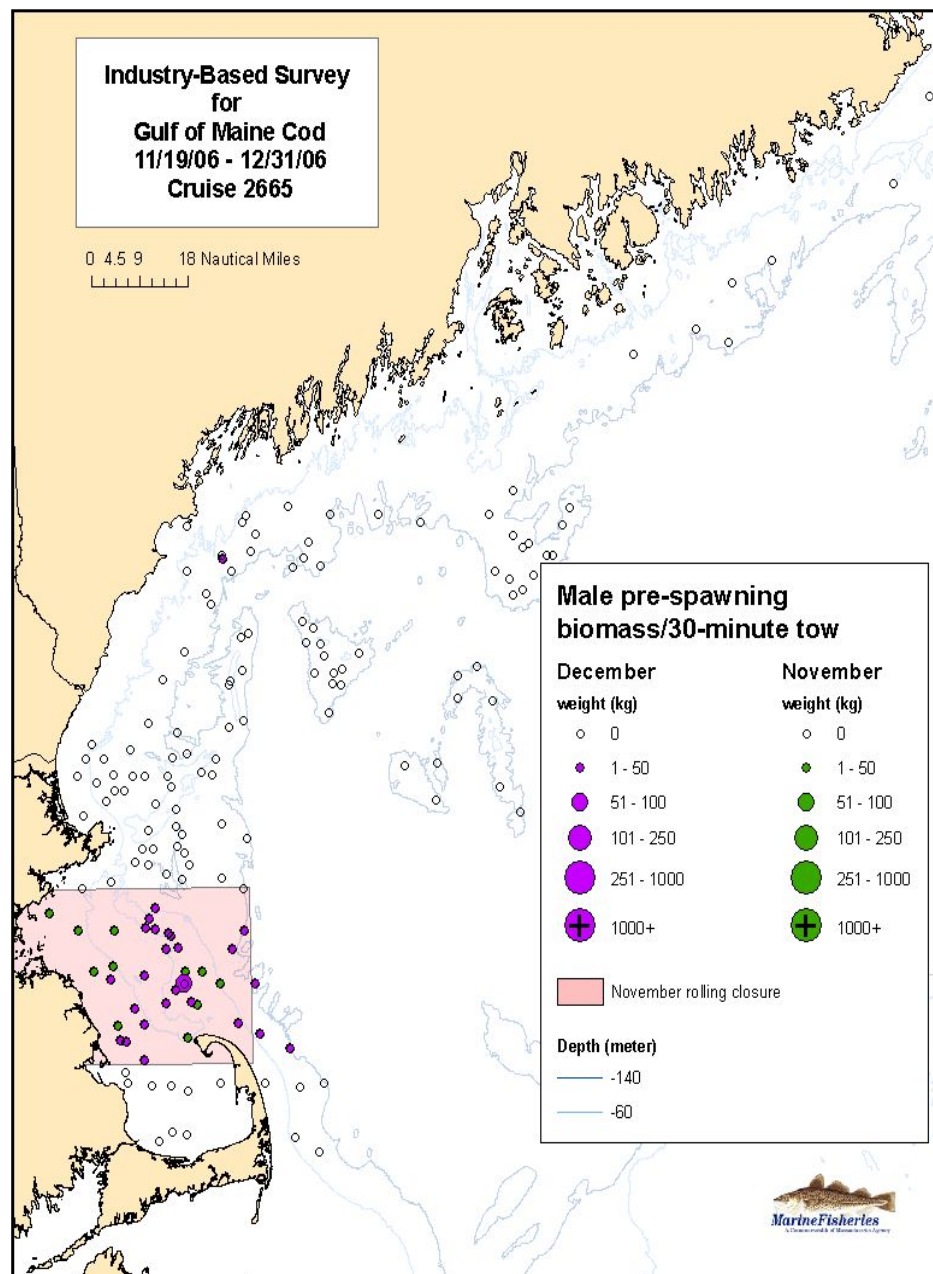
# Estimated Biomass (kg) of Prespawning Males and Females

\* Weights standardized to 30 minutes in duration.

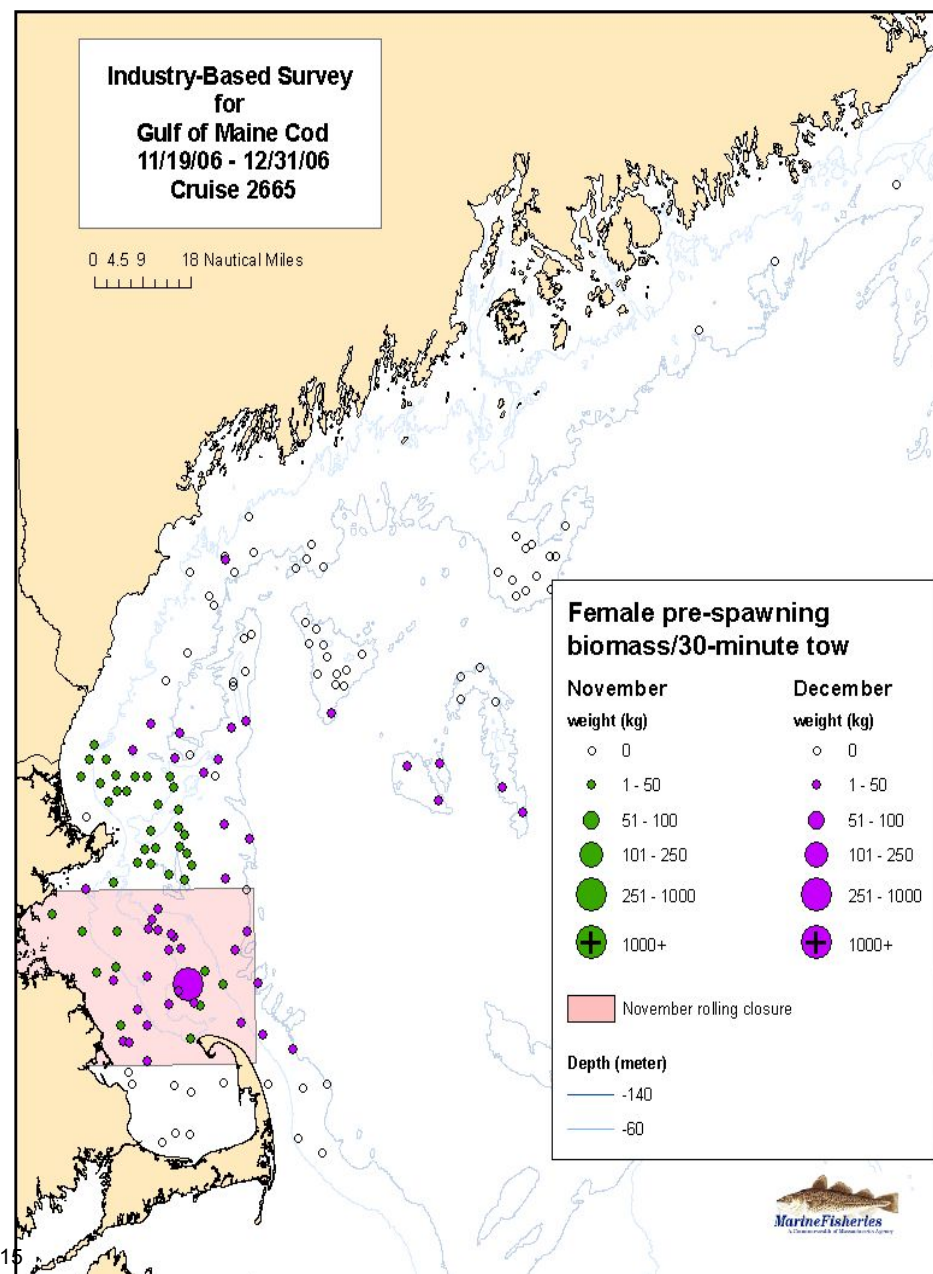


# Estimated Biomass (kg) of Prespawning Males and Females

\* Survey results during November rolling closure periods. Weights standardized to 30 minutes in duration.



E-15



# Industry-Based Survey for Gulf of Maine Cod

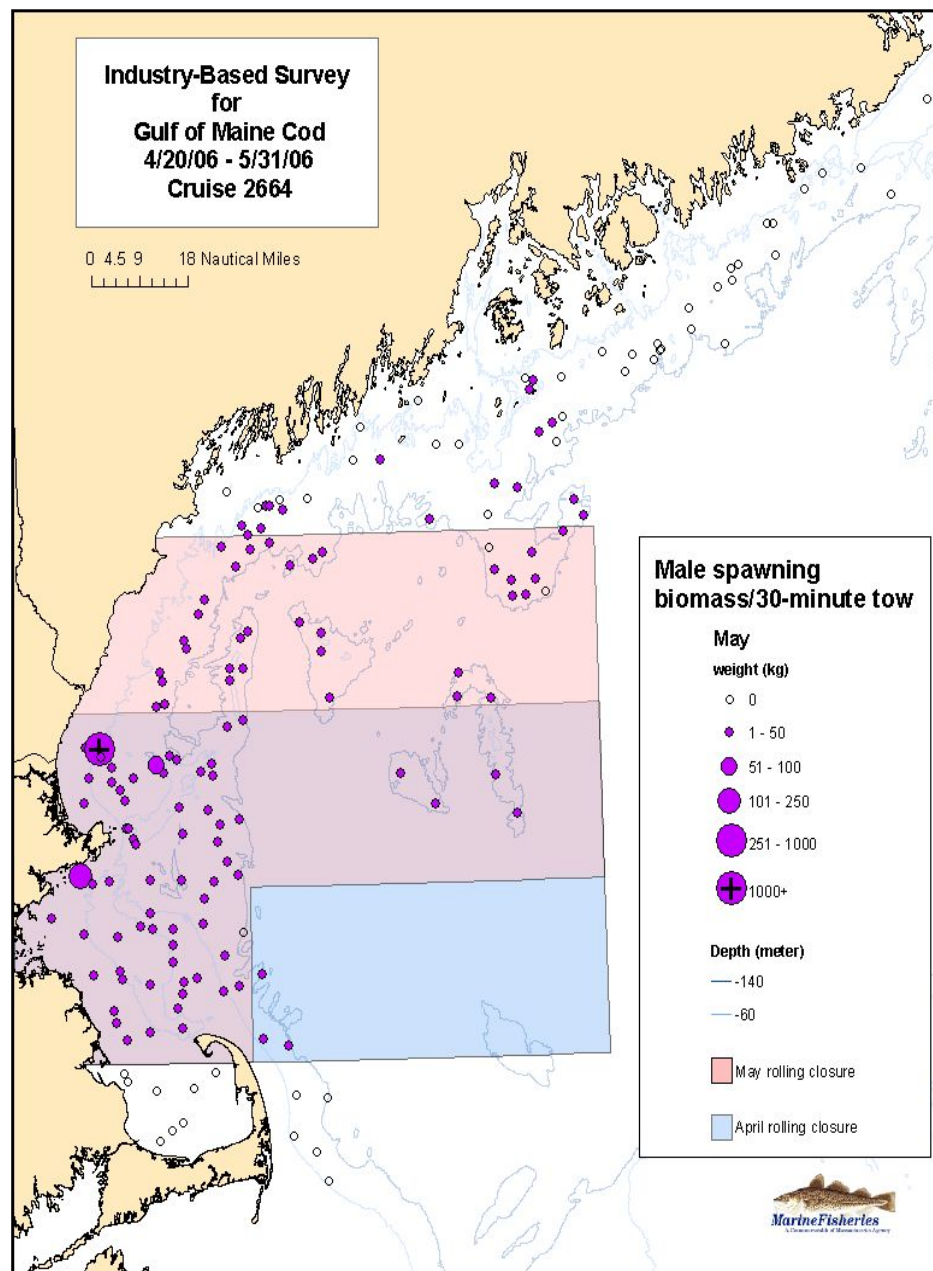
2006 - 2007 Survey Results

## Atlantic Cod

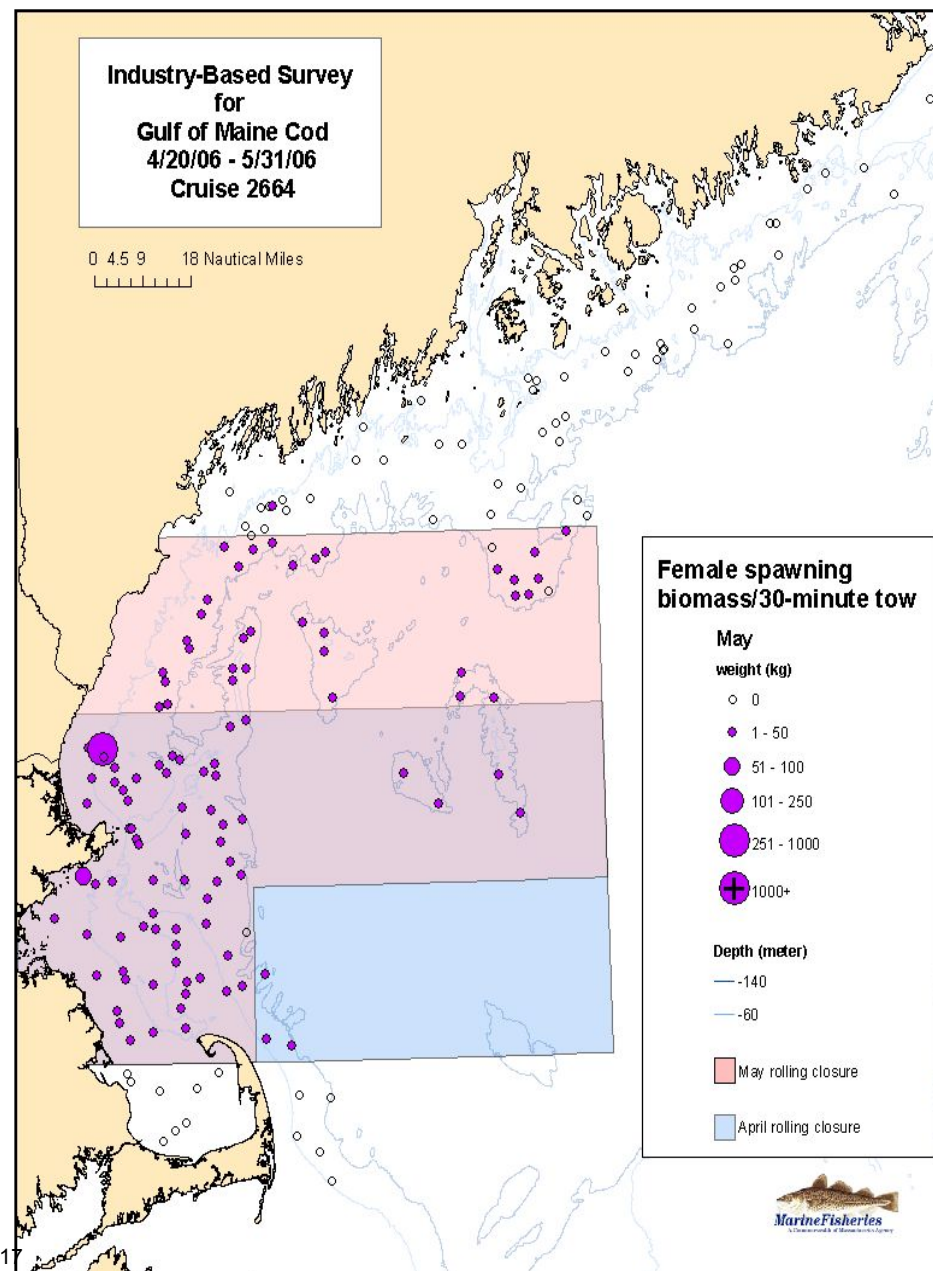
Spatial and temporal distribution by sex of estimated spawning  
condition biomass (ripe, ripe & running and spent fish)

# Estimated Biomass (kg) of Spawning Males and Females

\* Survey results during April and May rolling closure periods. Weights standardized to 30 minutes in duration.



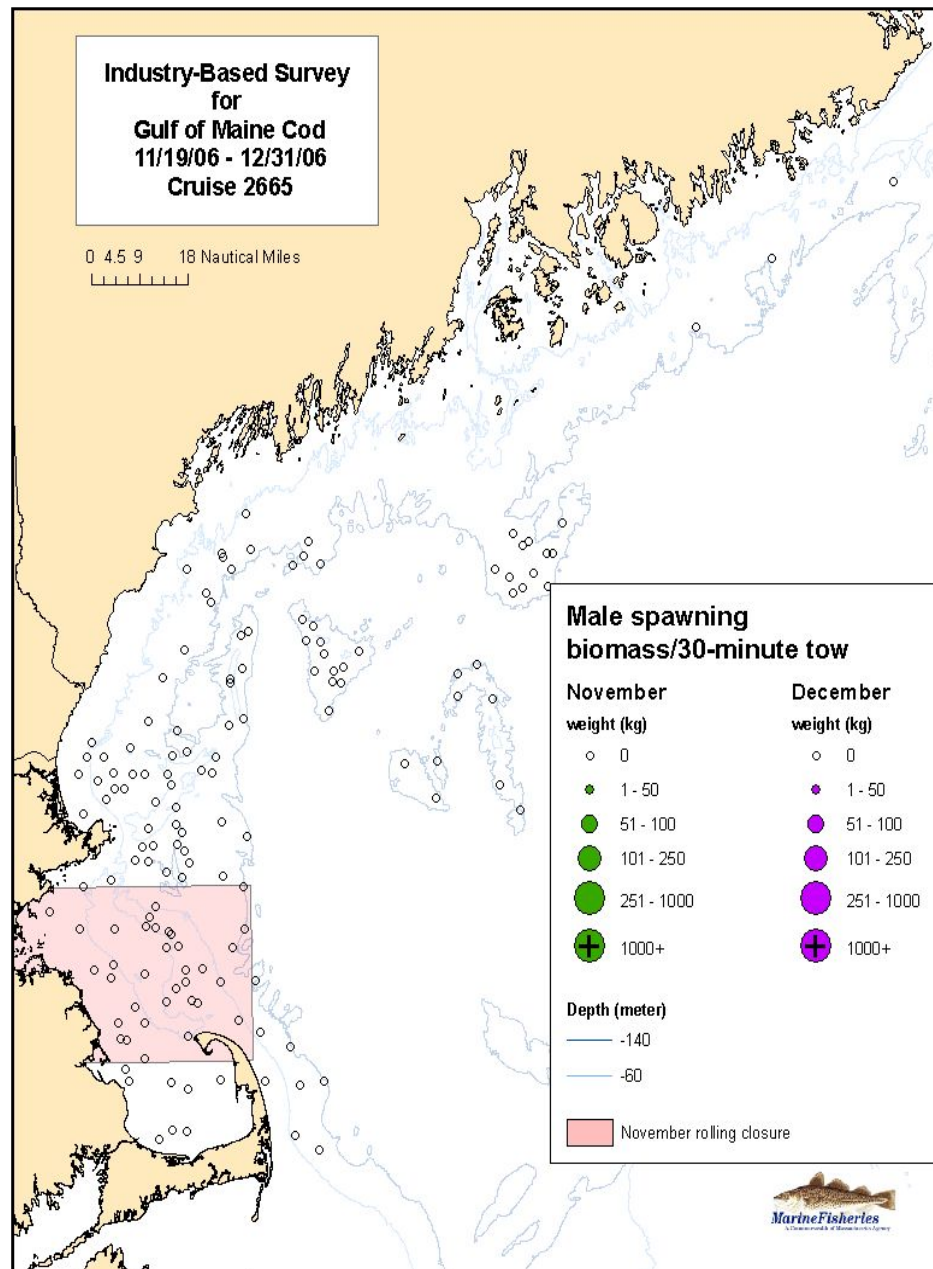
E-17



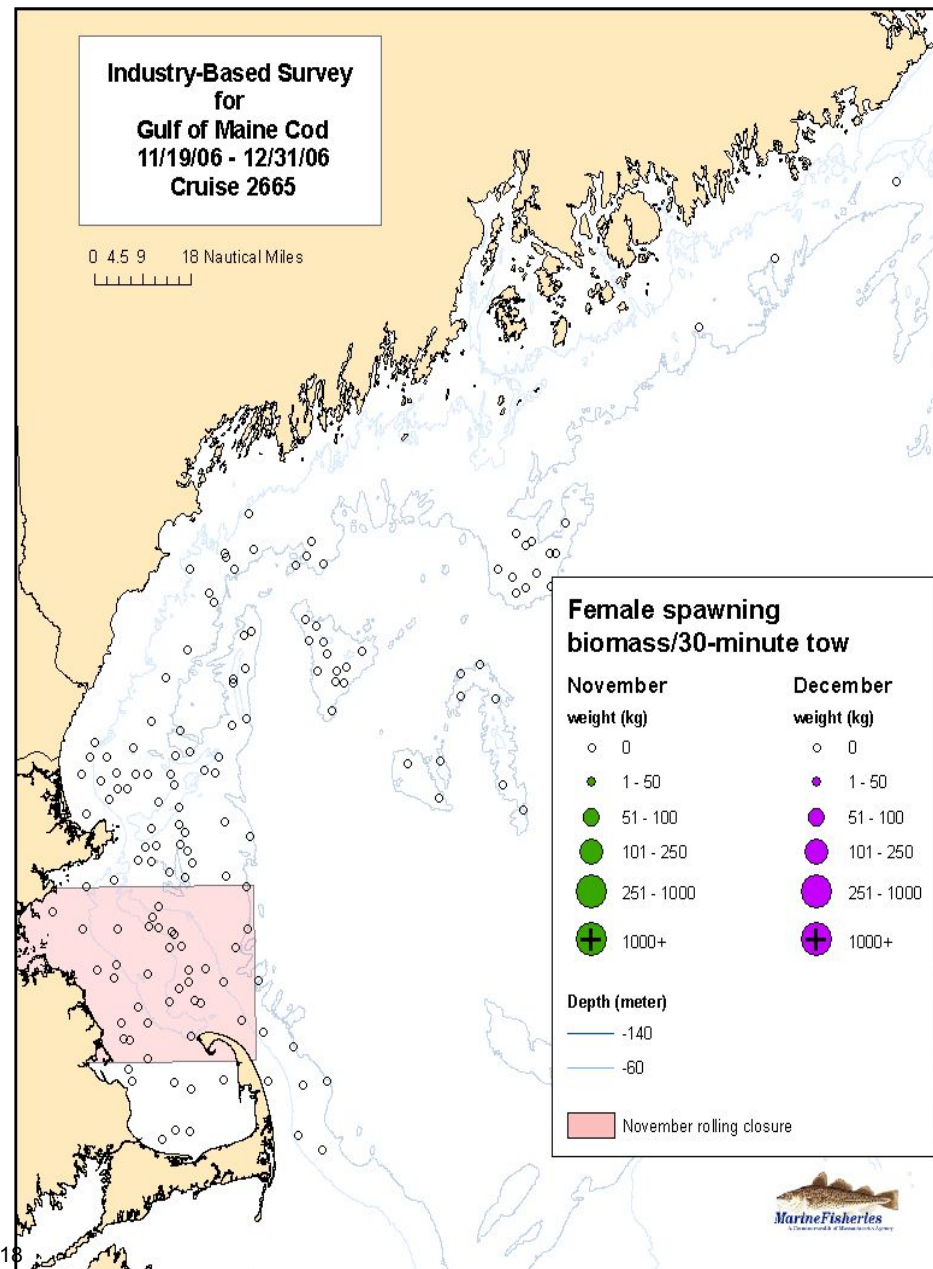


# Estimated Biomass (kg) of Spawning Males and Females

\* Survey results during November rolling closure period. Weights standardized to 30 minutes in duration.

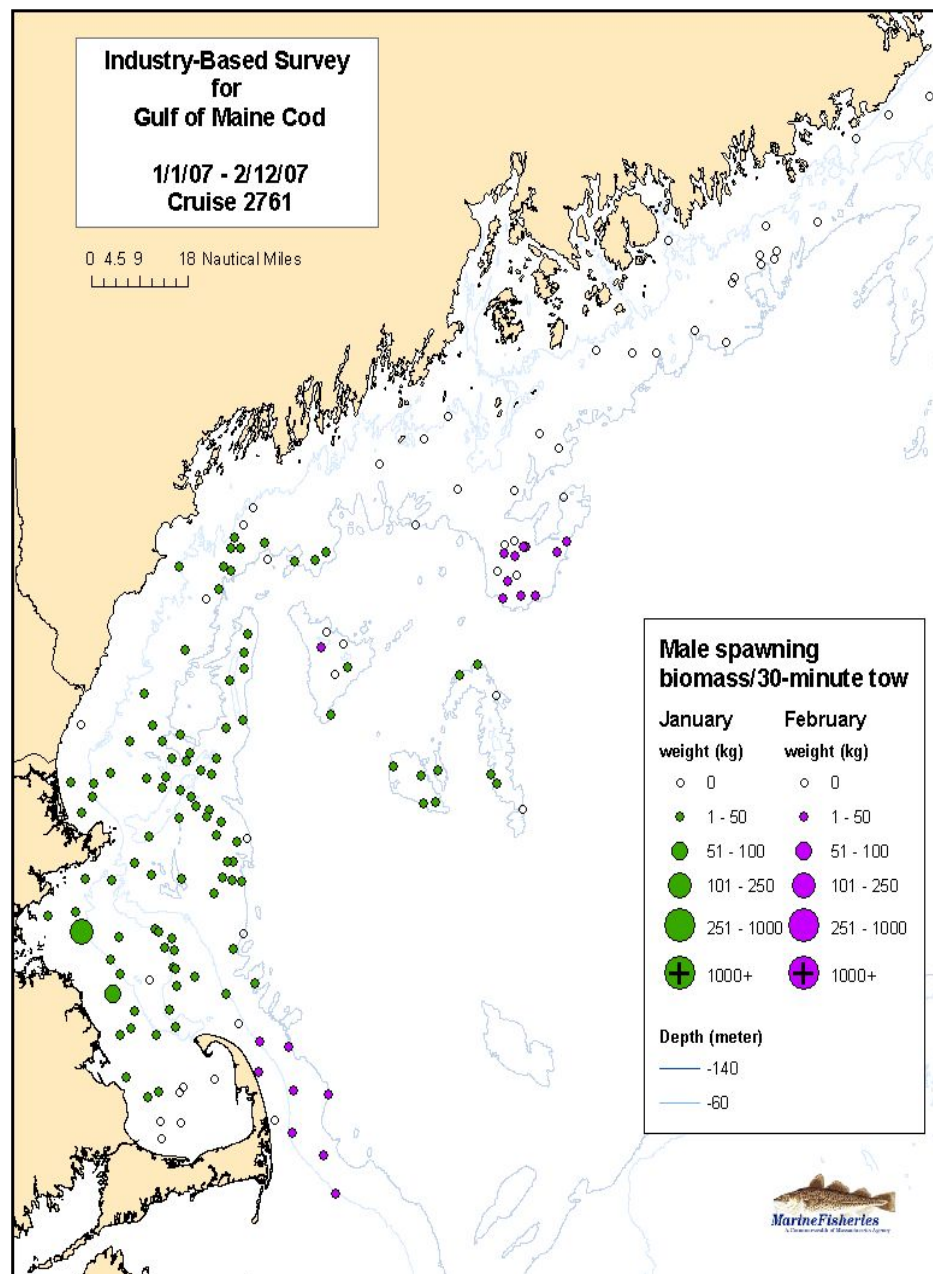


E-18

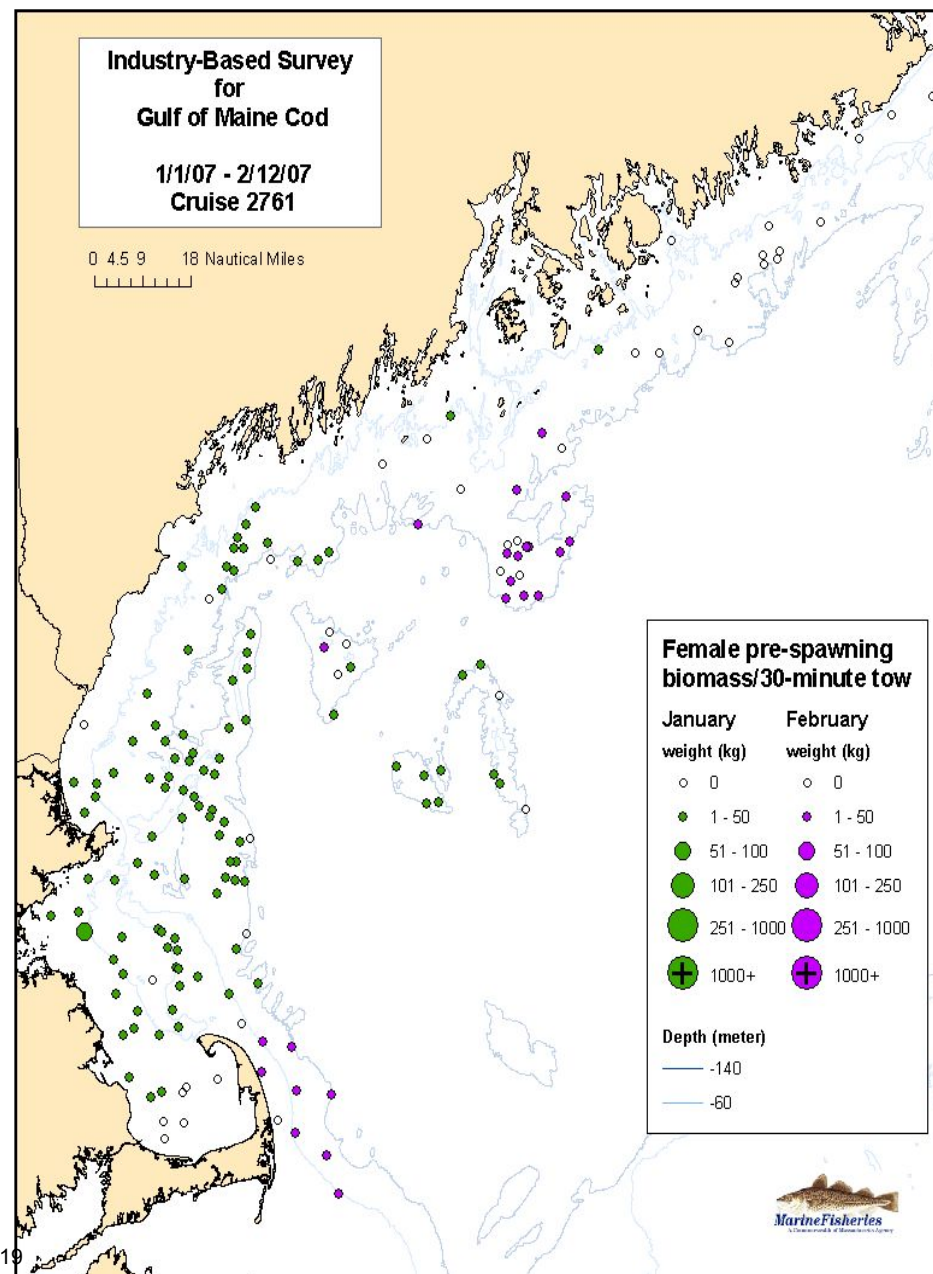


# Estimated Biomass (kg) of Spawning Males and Females

\* Weights standardized to 30 minutes in duration.



E-19



# Estimated Biomass (kg) of Spawning Males and Females

\* Survey results during March rolling closure periods. Weights standardized to 30 minutes in duration.

