

Appendix F

Industry-Based Survey for Gulf of Maine Cod Pilot Study

Data submitted to the Plan Development Team for the evaluation of the rolling closures

Industry-Based Survey for Gulf of Maine Cod

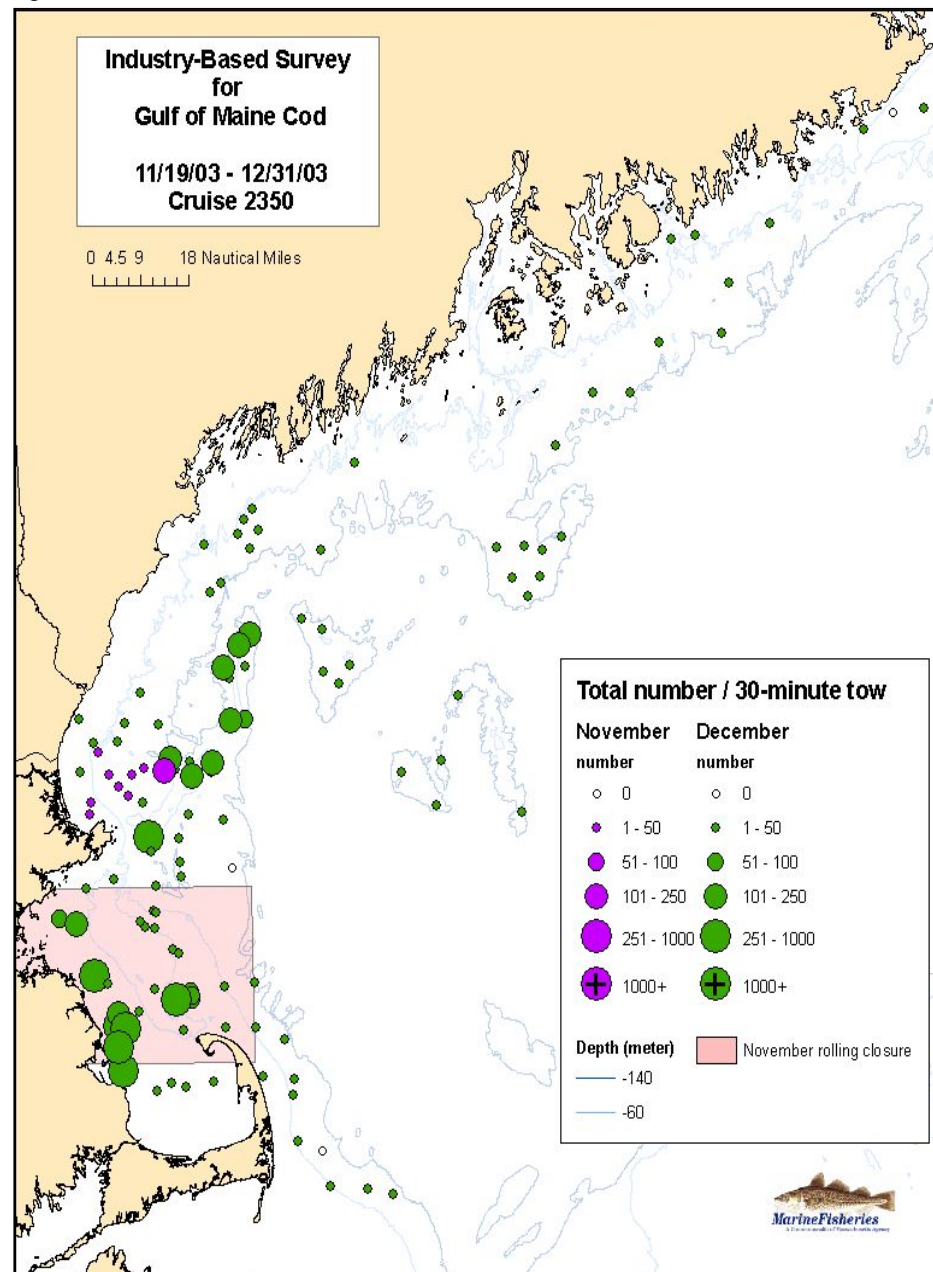
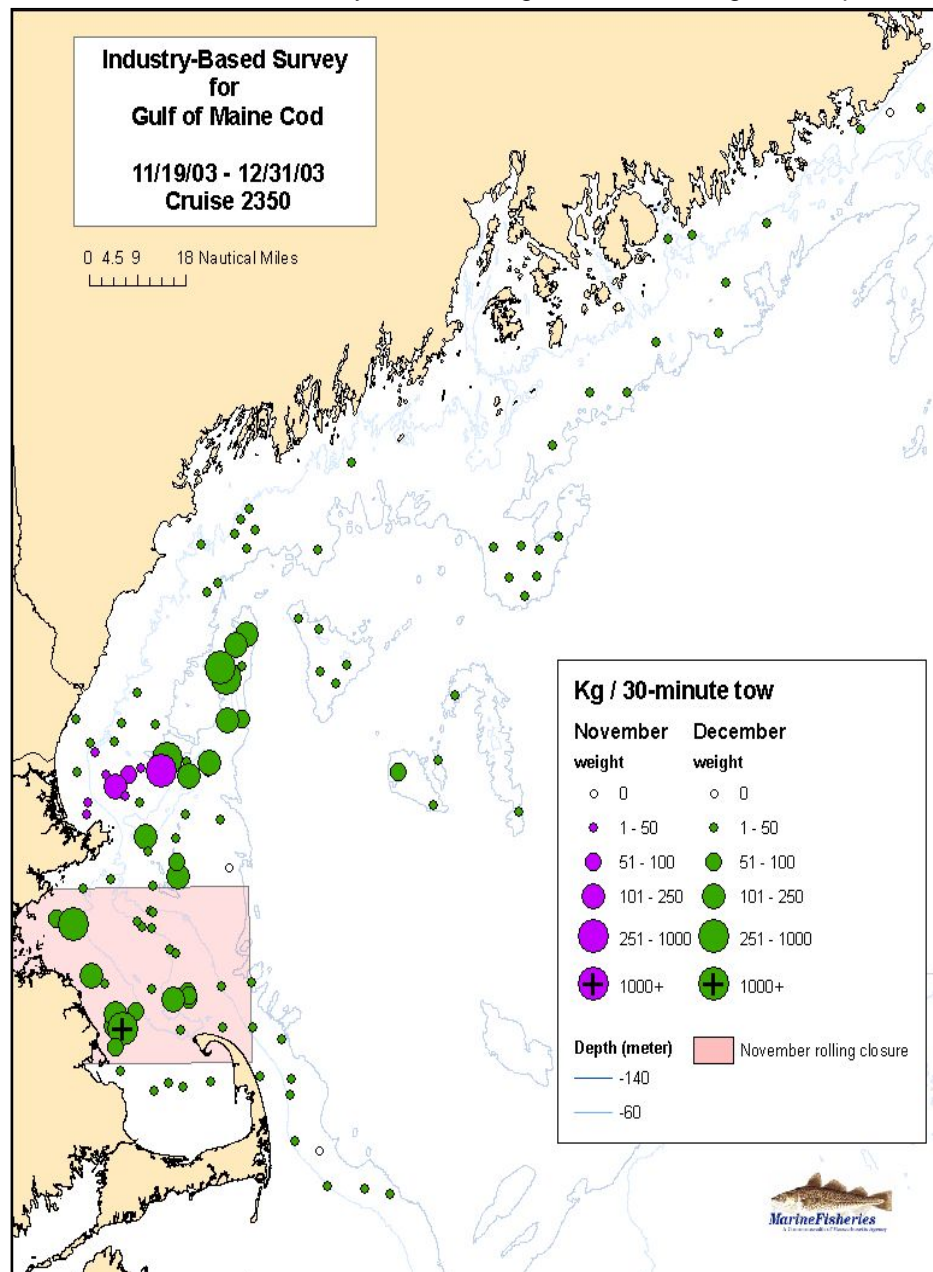
2003 - 2004 Survey Results

Atlantic Cod

Spatial and temporal distribution of total weight and total number

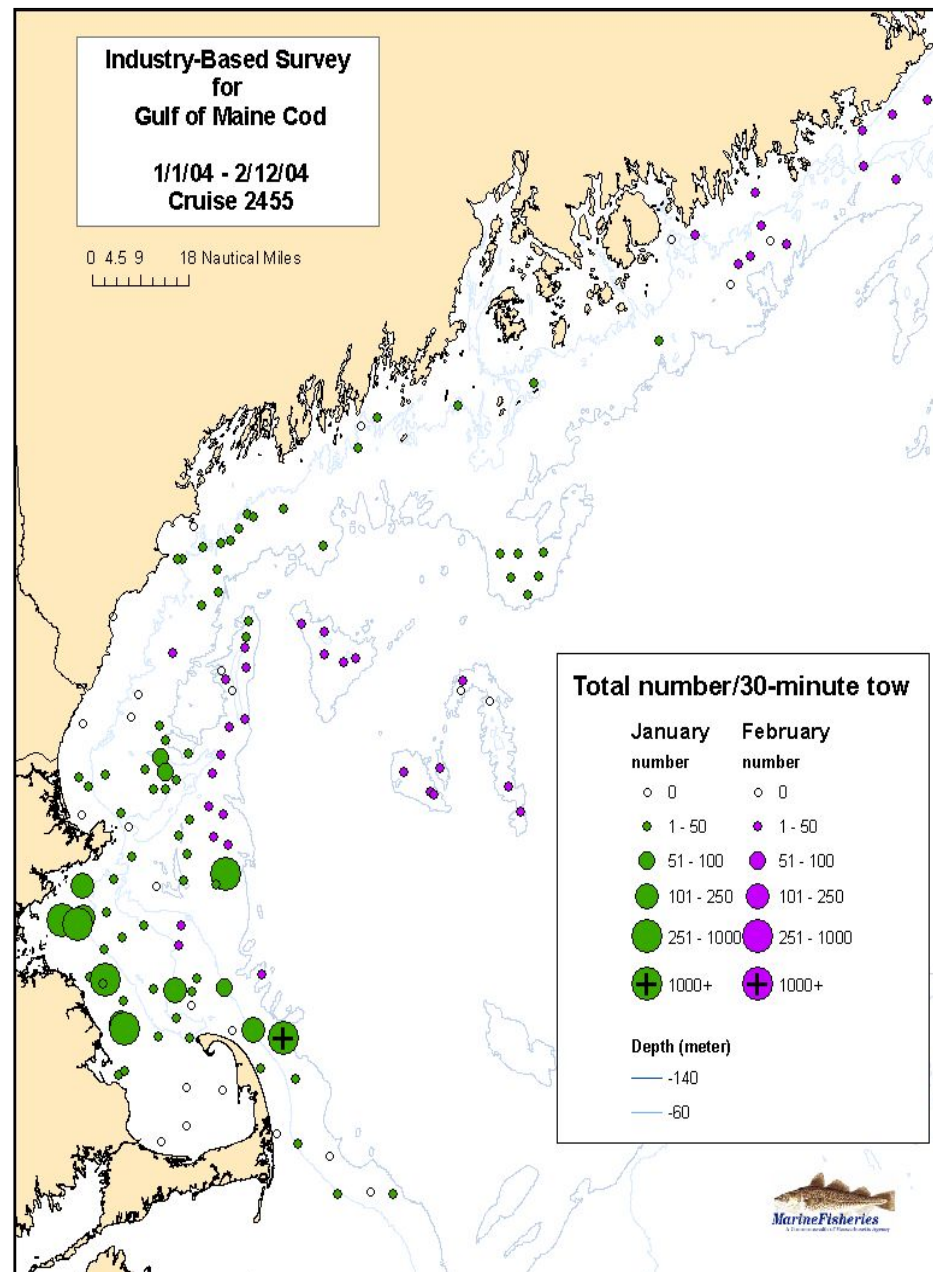
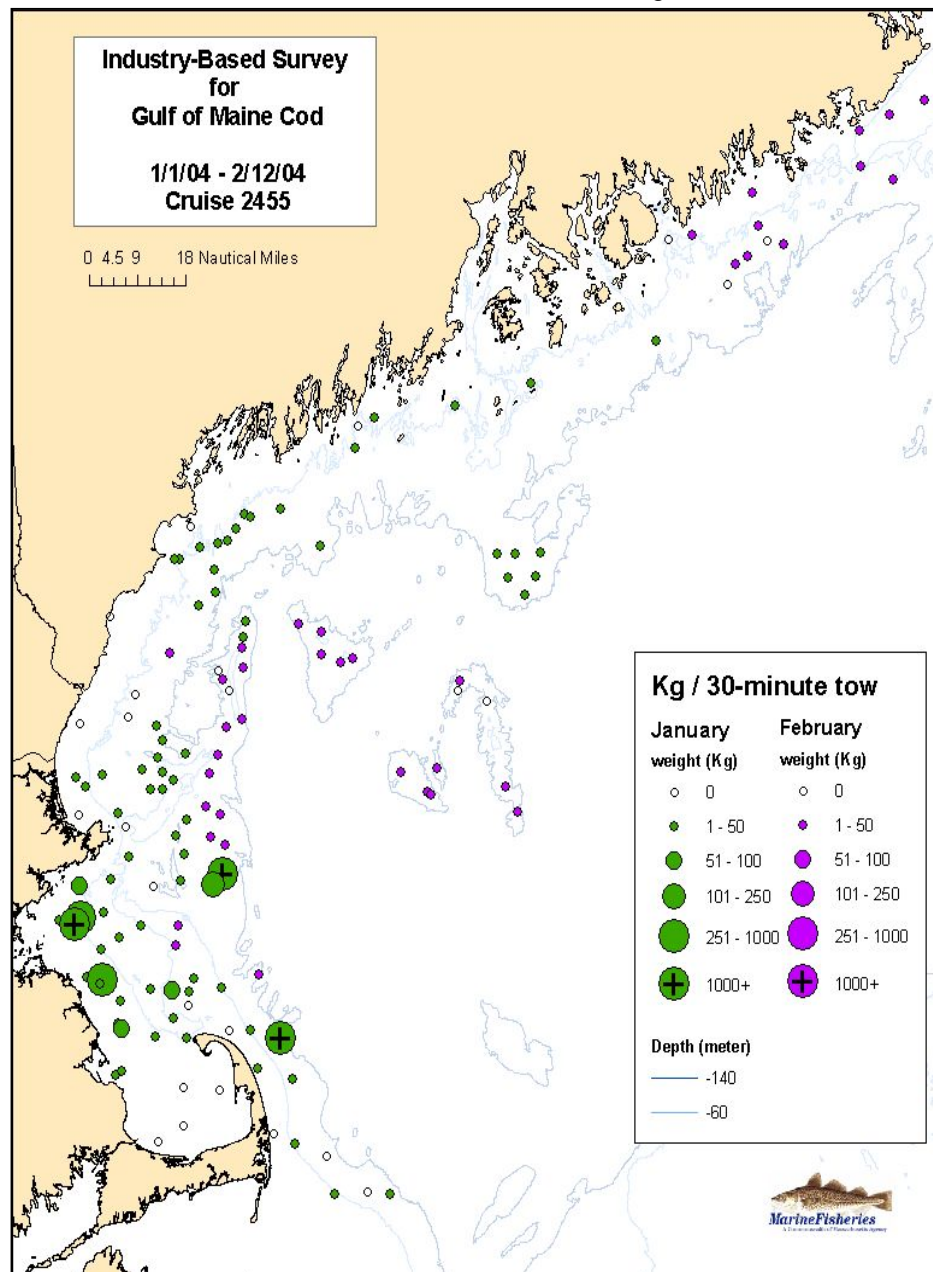
Catch Weight (kg) and Number per Tow

* Survey results during November rolling closure period. Weights and number standardized to 30 minutes in duration.



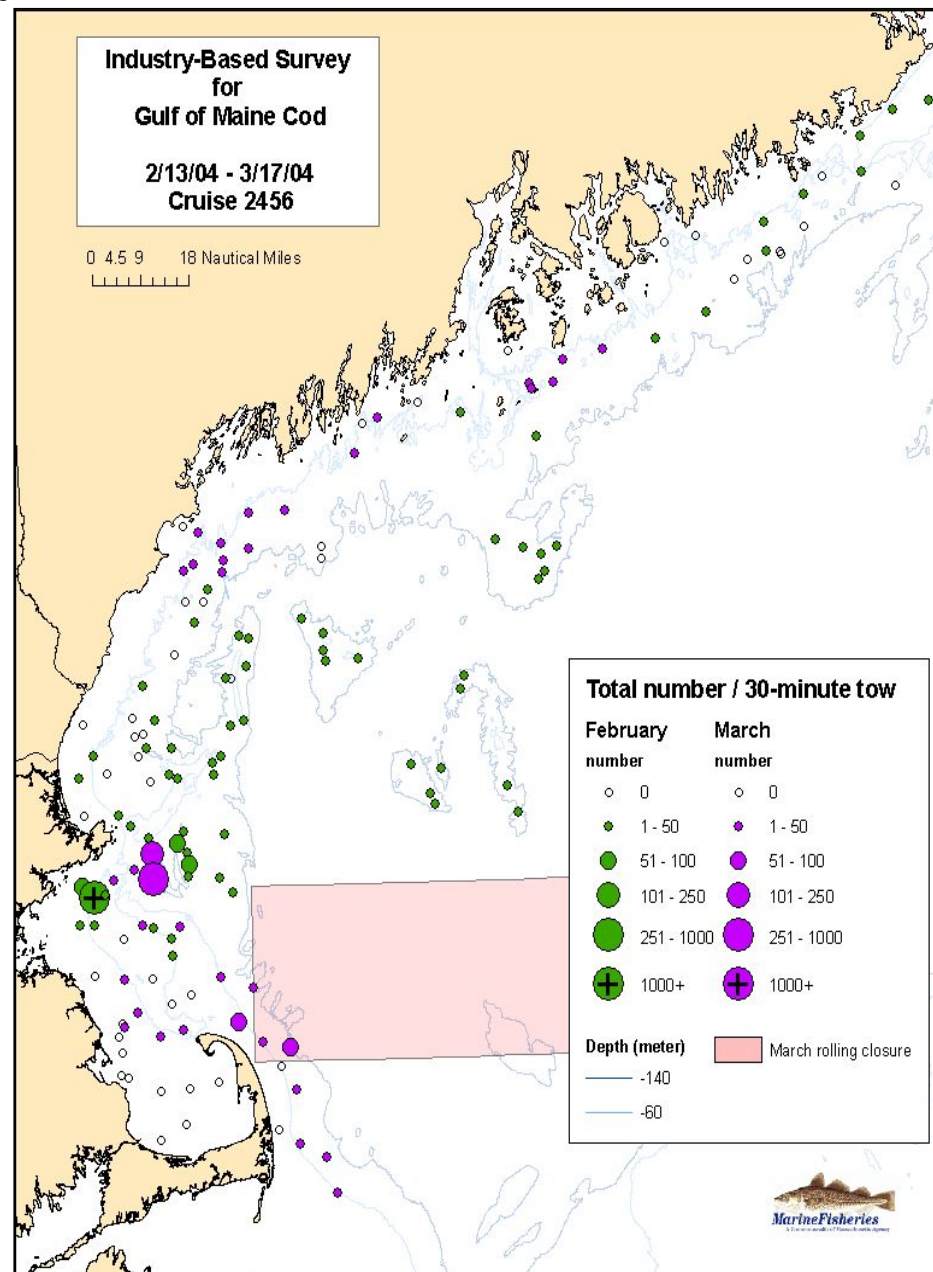
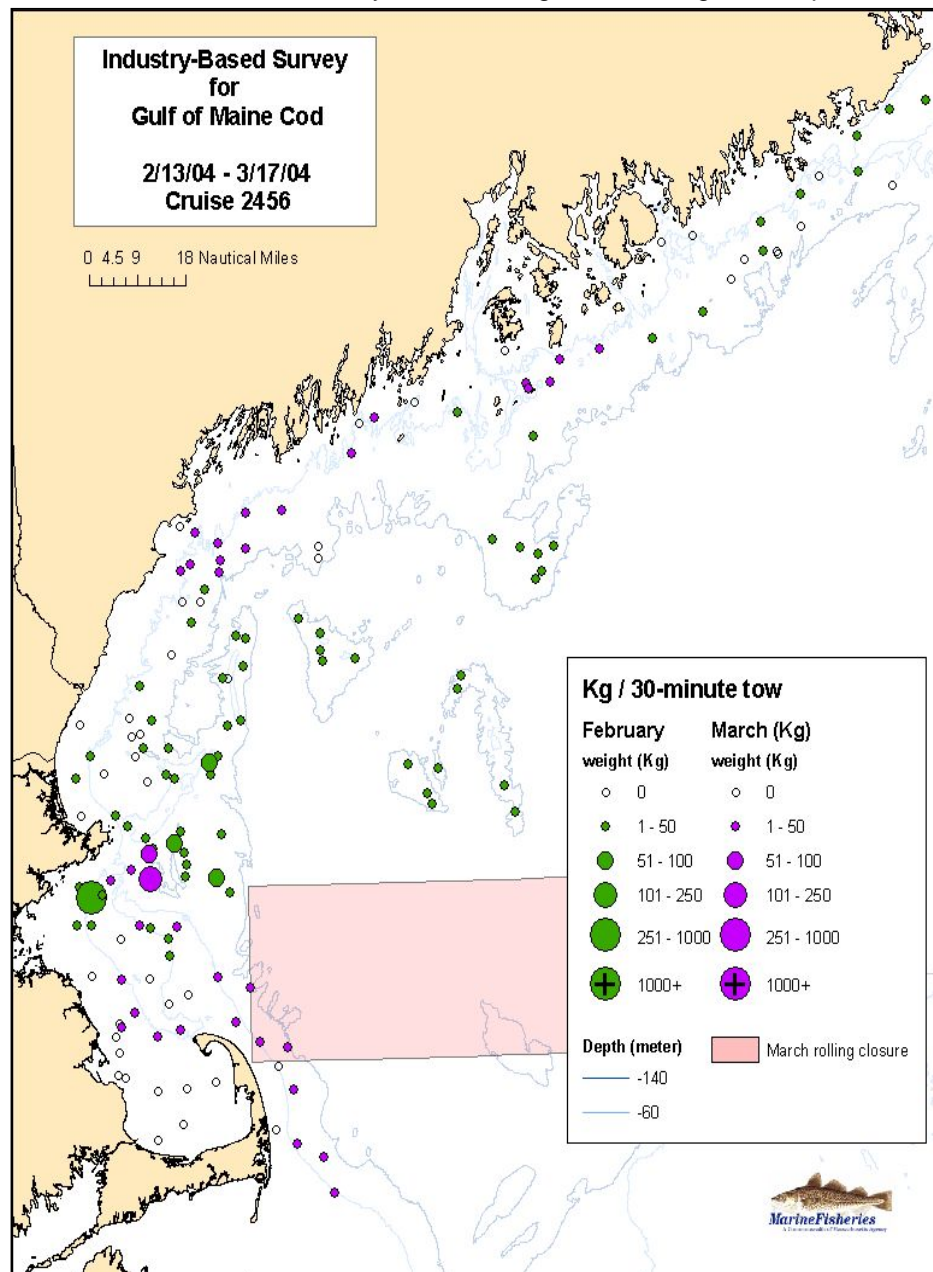
Catch Weight (kg) and Number per Tow

* Weights and numbers standardized to 30 minutes in duration.



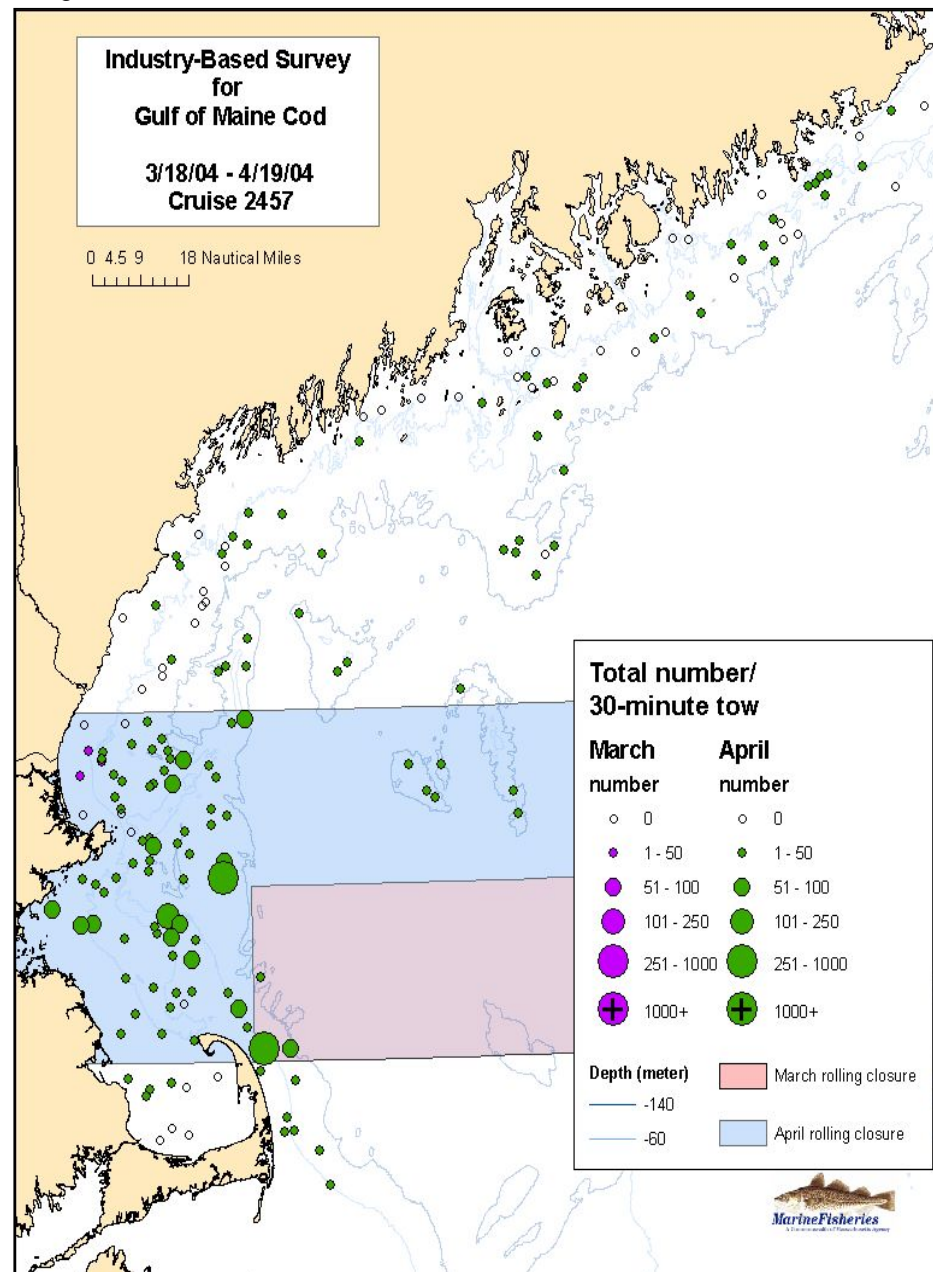
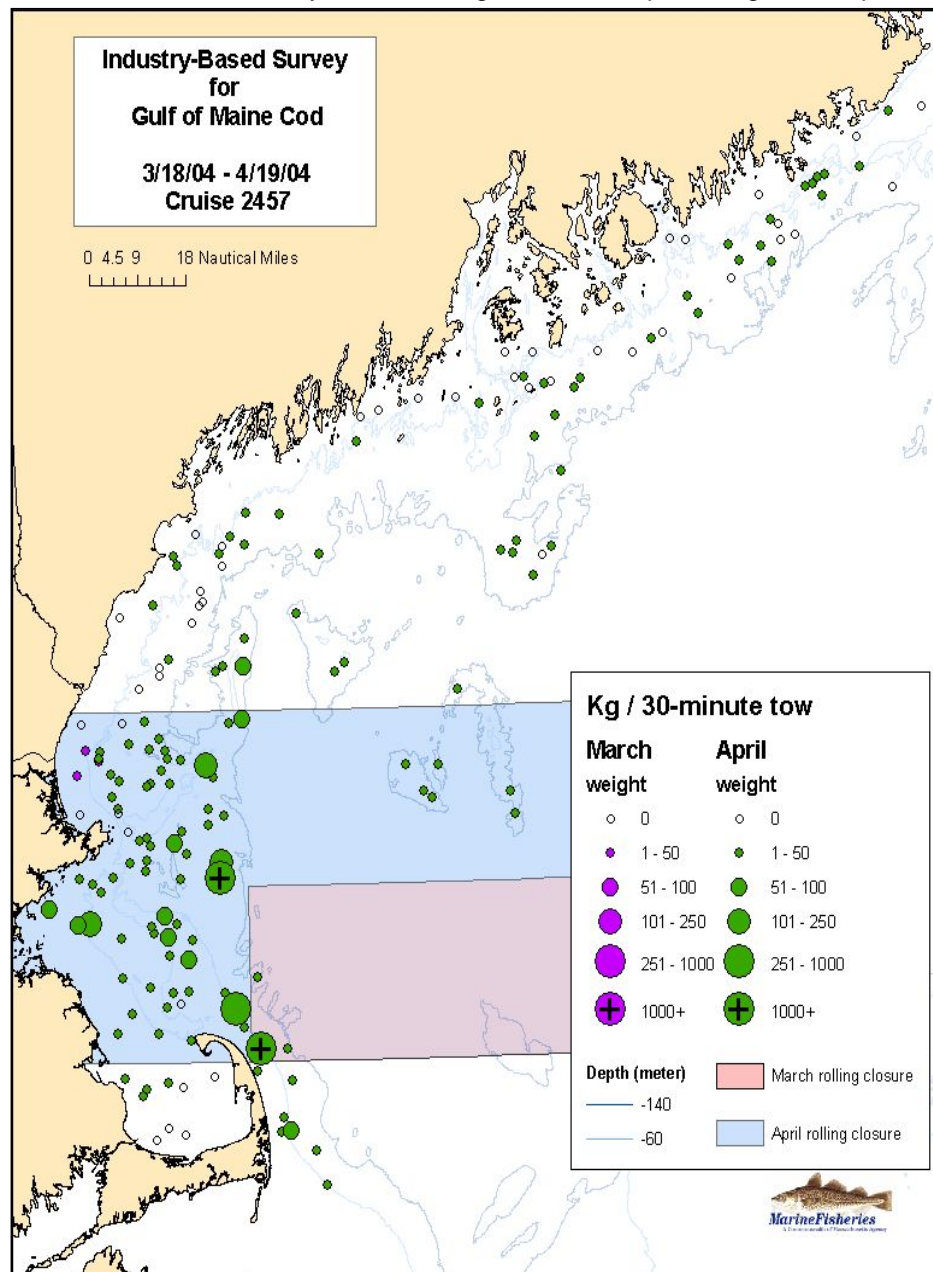
Catch Weight (kg) and Number per Tow

* Survey results during March rolling closure period. Weights and numbers standardized to 30 minutes in duration.



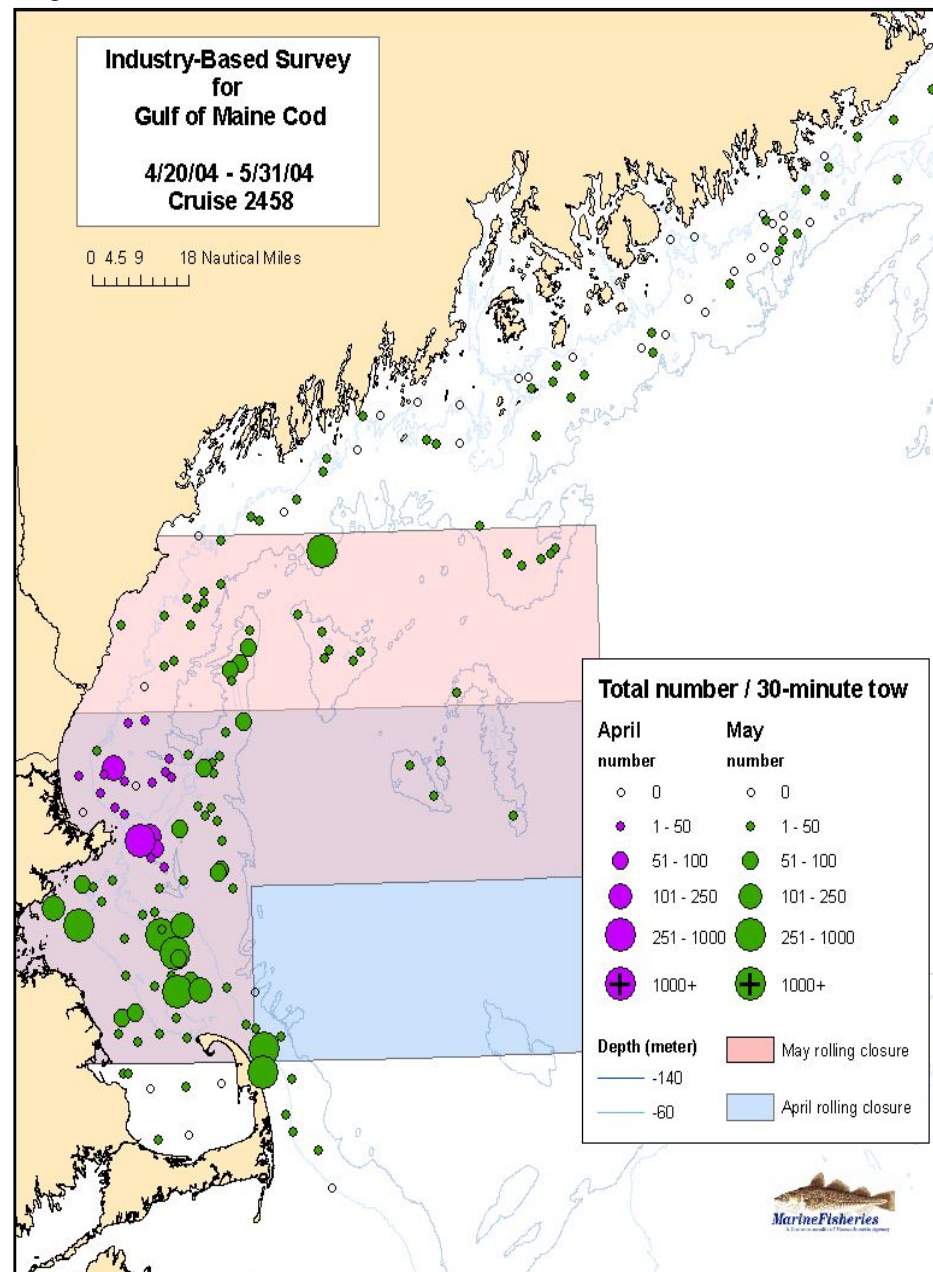
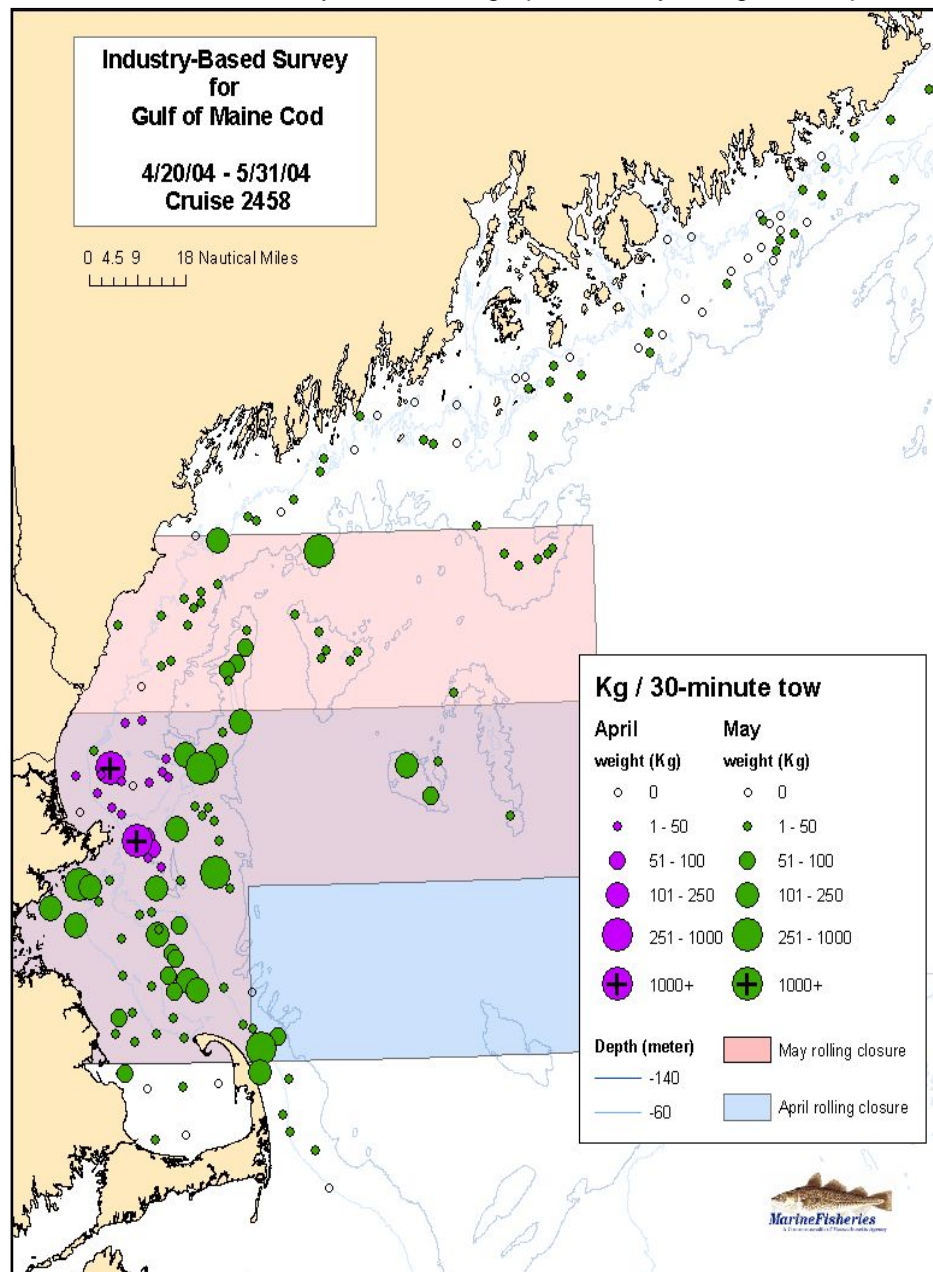
Catch Weight (kg) and Number per Tow

* Survey results during March and April rolling closure periods. Weights and numbers standardized to 30 minutes in duration.



Catch Weight (kg) and Number per Tow

* Survey results during April and May rolling closure periods. Weights and numbers standardized to 30 minutes in duration.



Industry-Based Survey for Gulf of Maine Cod

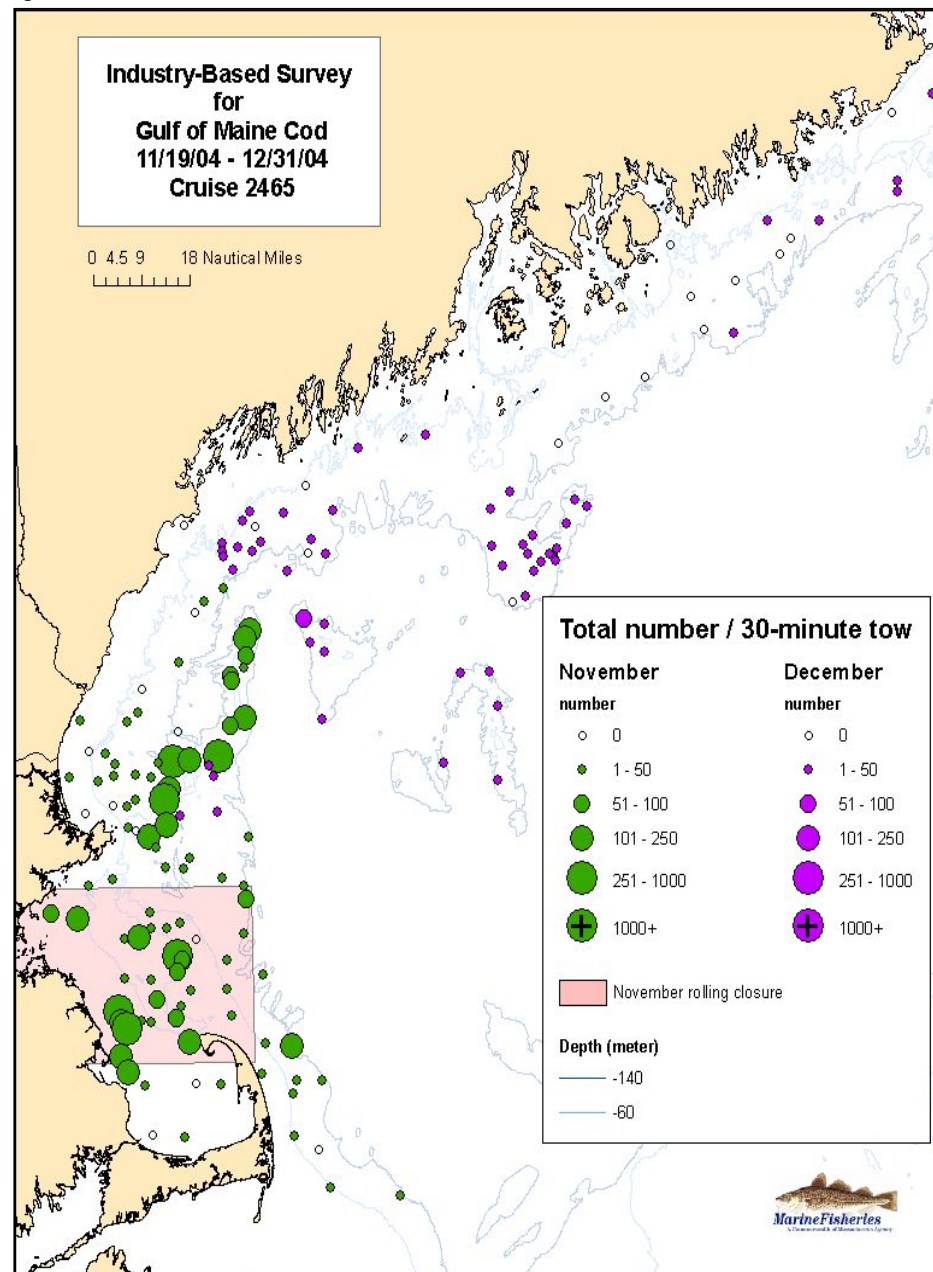
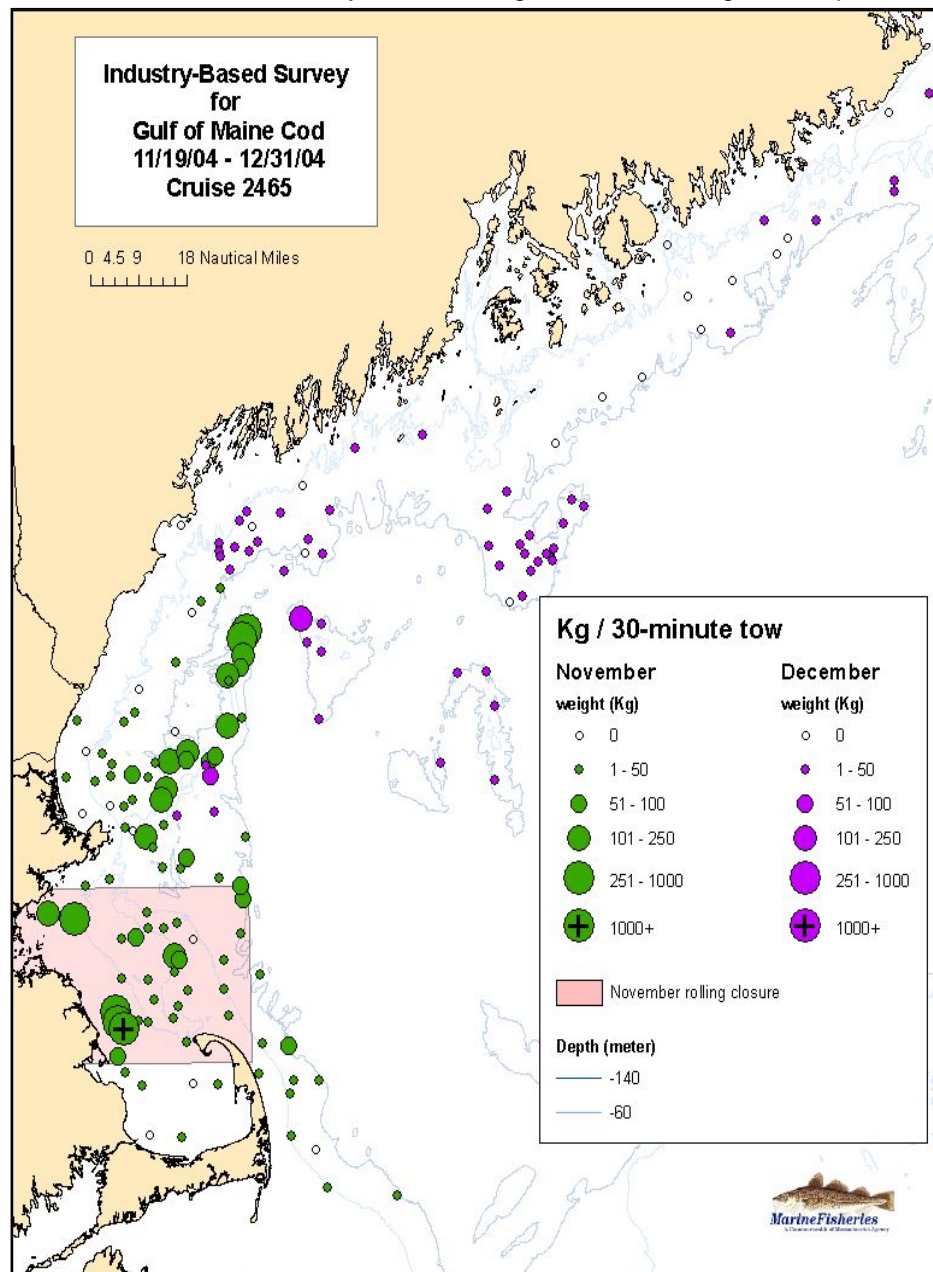
2004 - 2005 Survey Results

Atlantic Cod

Spatial and temporal distribution of total weight and total number

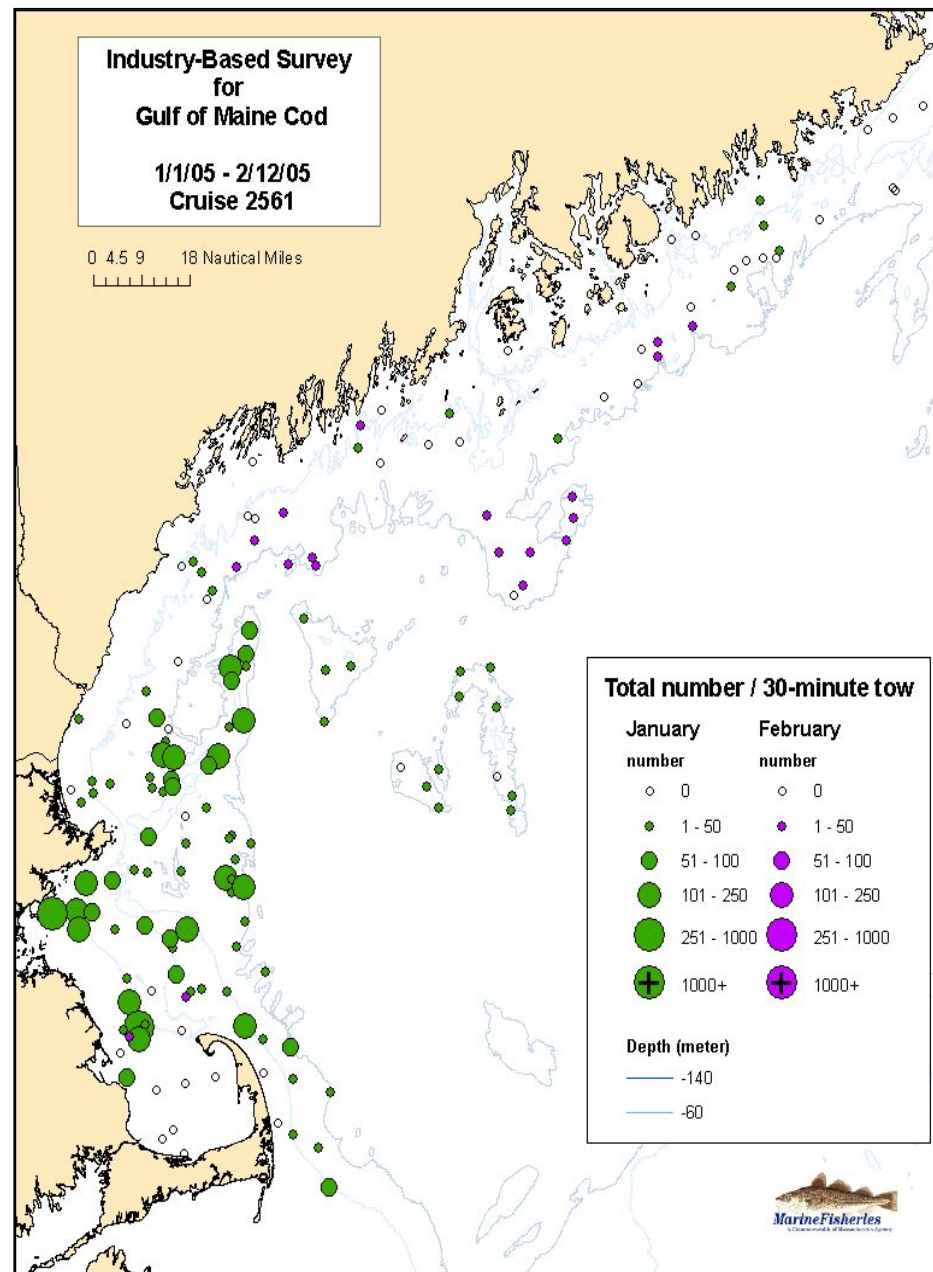
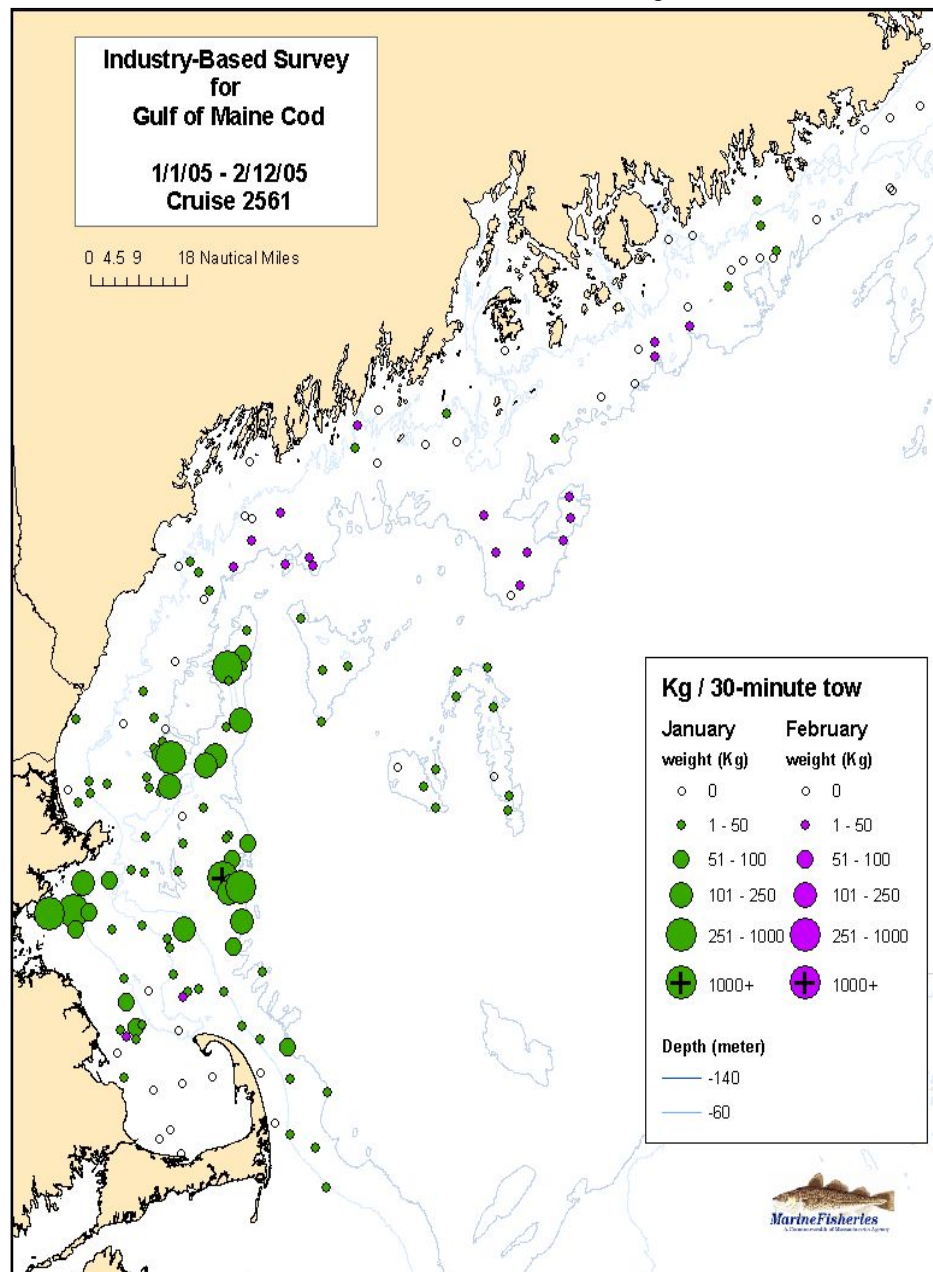
Catch Weight (kg) and Number per Tow

* Survey results during November rolling closure period. Weights and numbers standardized to 30 minutes in duration.



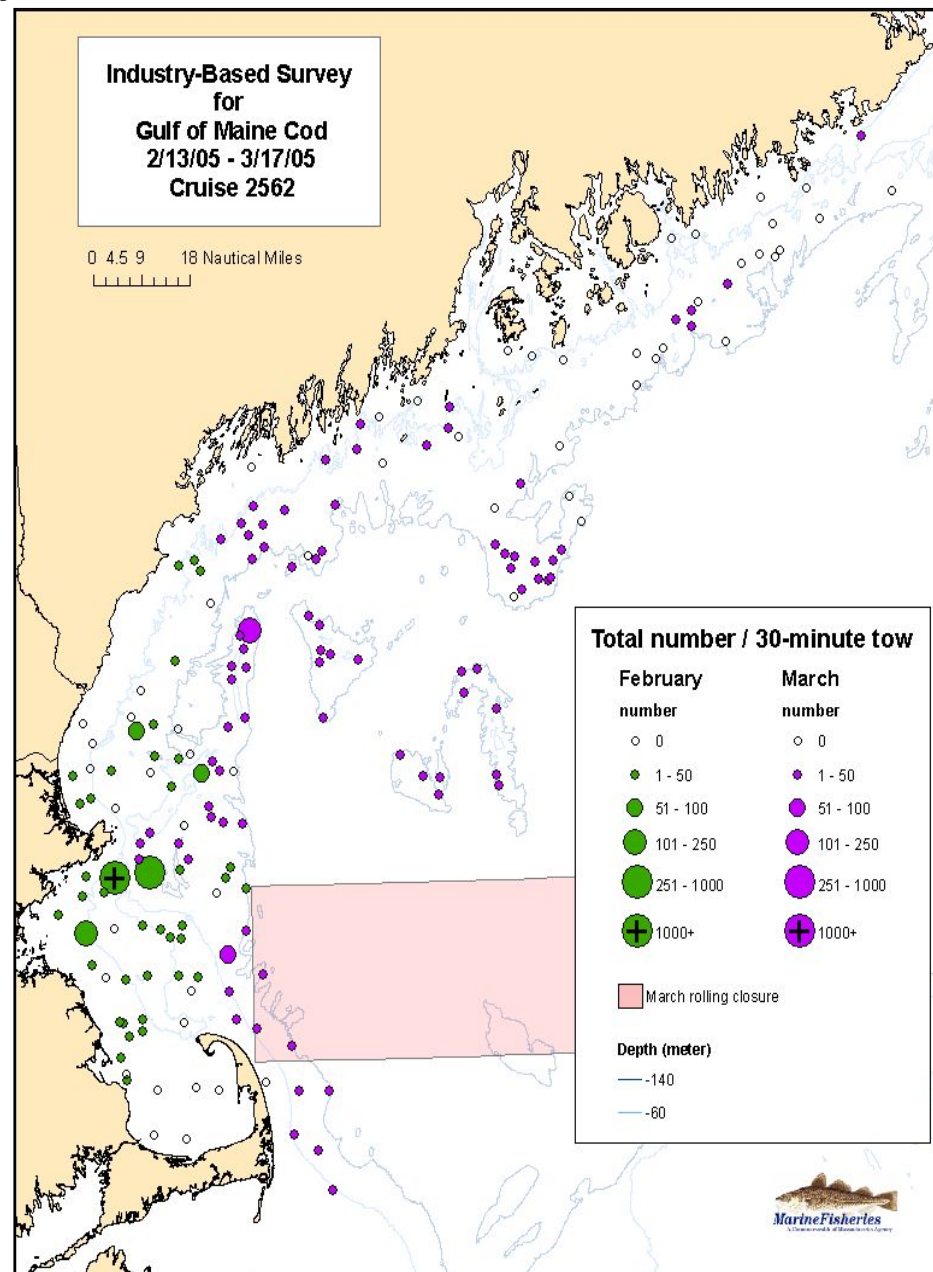
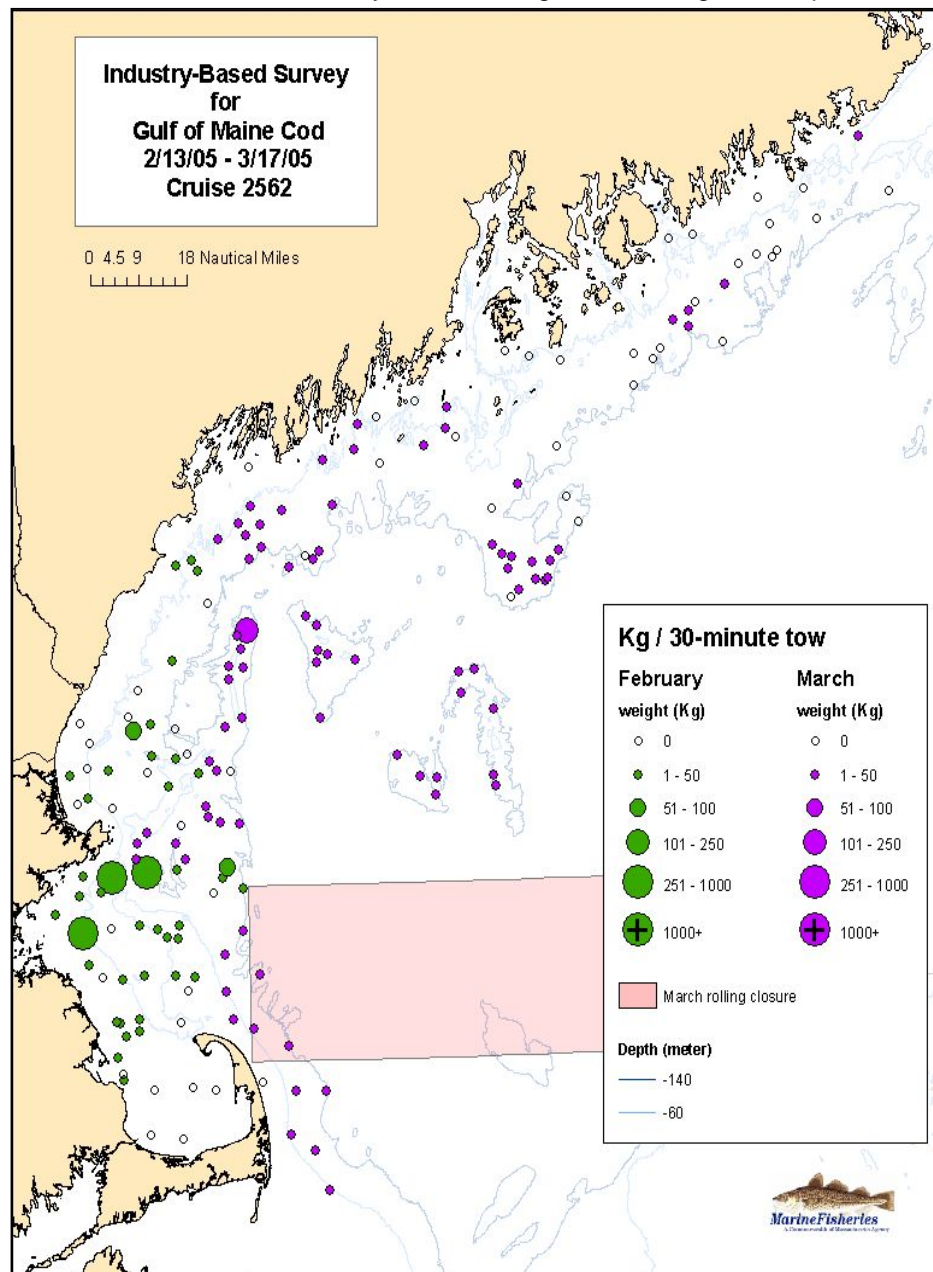
Catch Weight (kg) and Number per Tow

* Weights and numbers standardized to 30 minutes in duration.



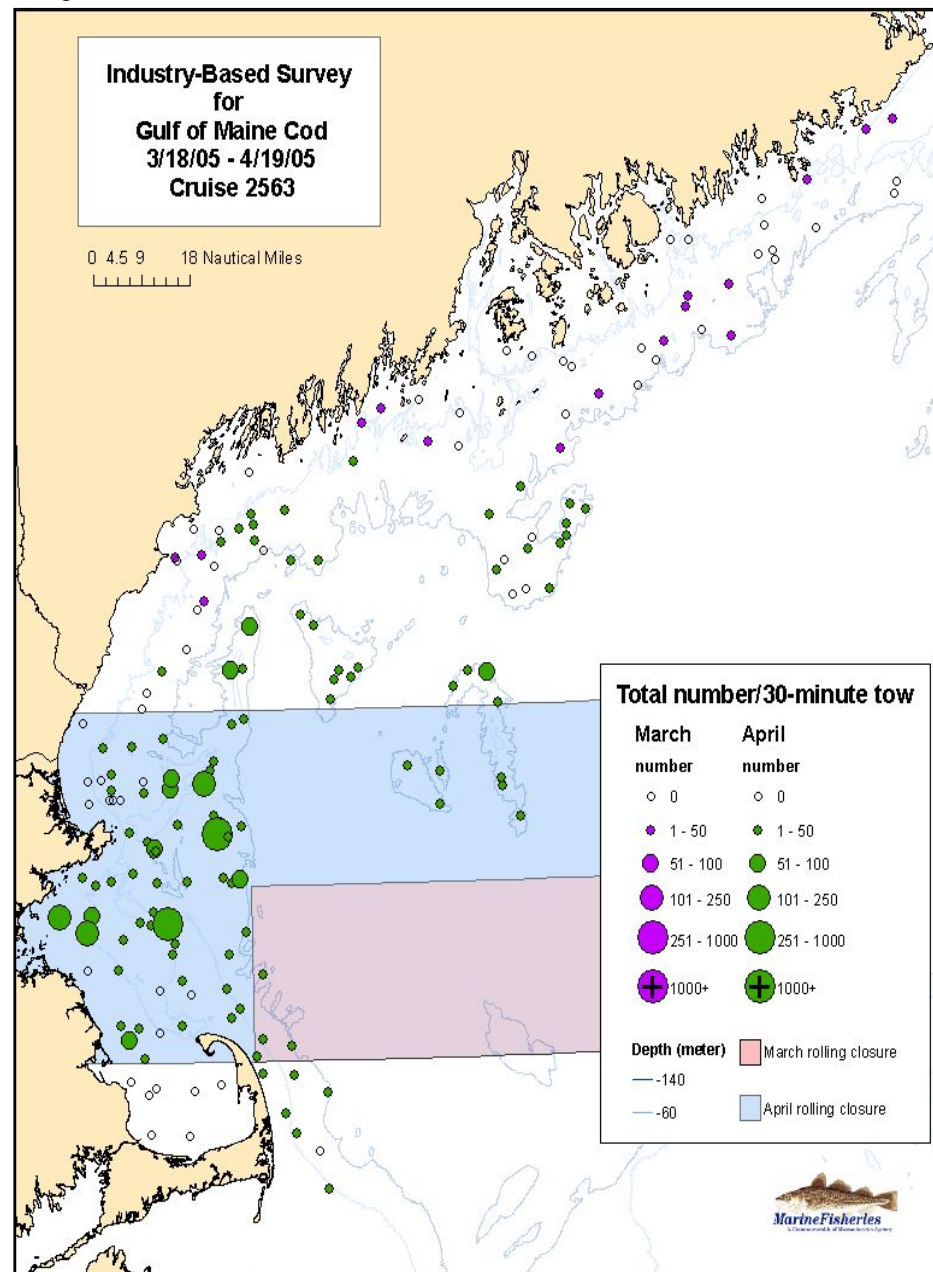
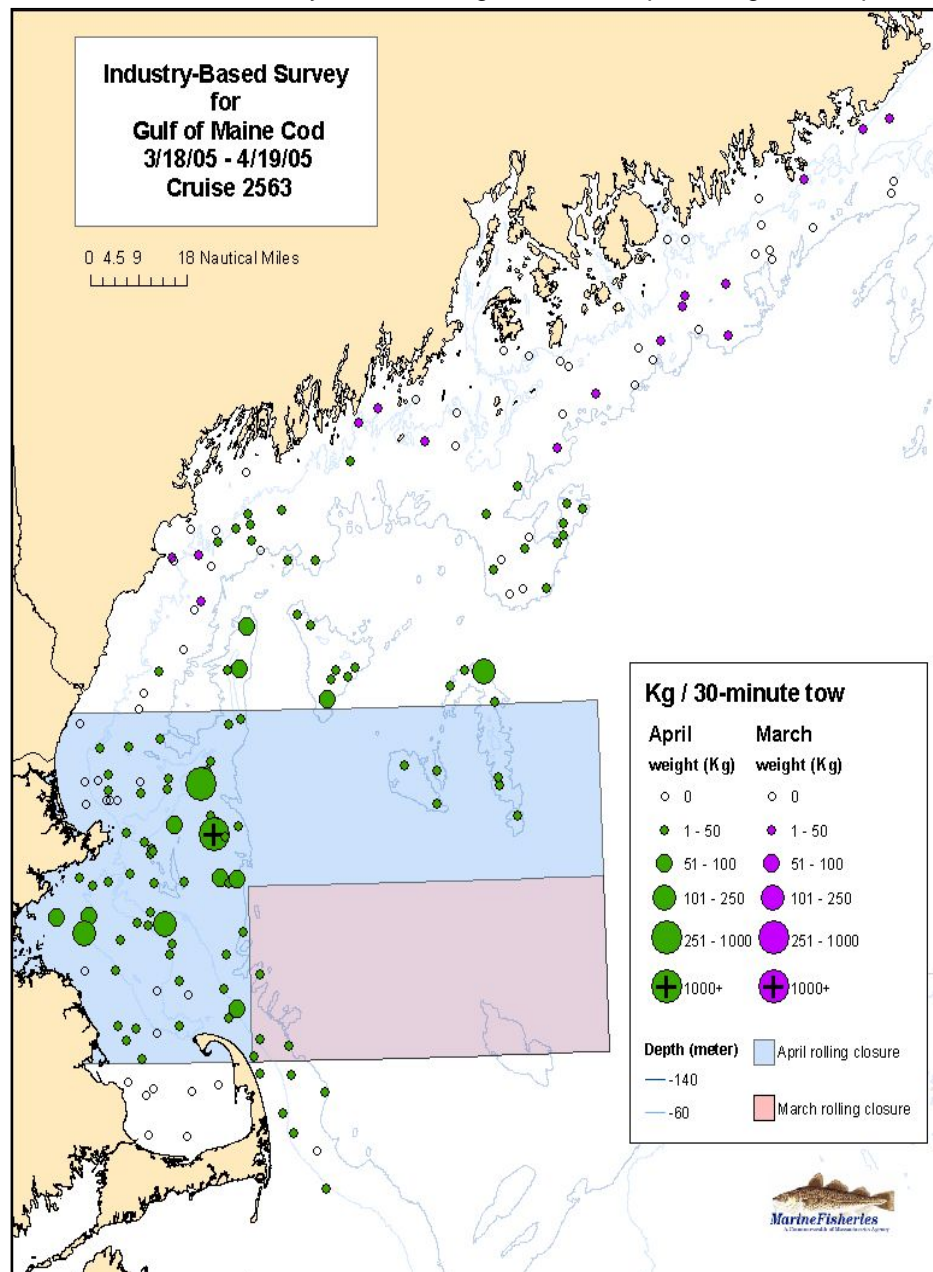
Catch Weight (kg) and Number per Tow

* Survey results during March rolling closure period. Weights and numbers standardized to 30 minutes in duration.



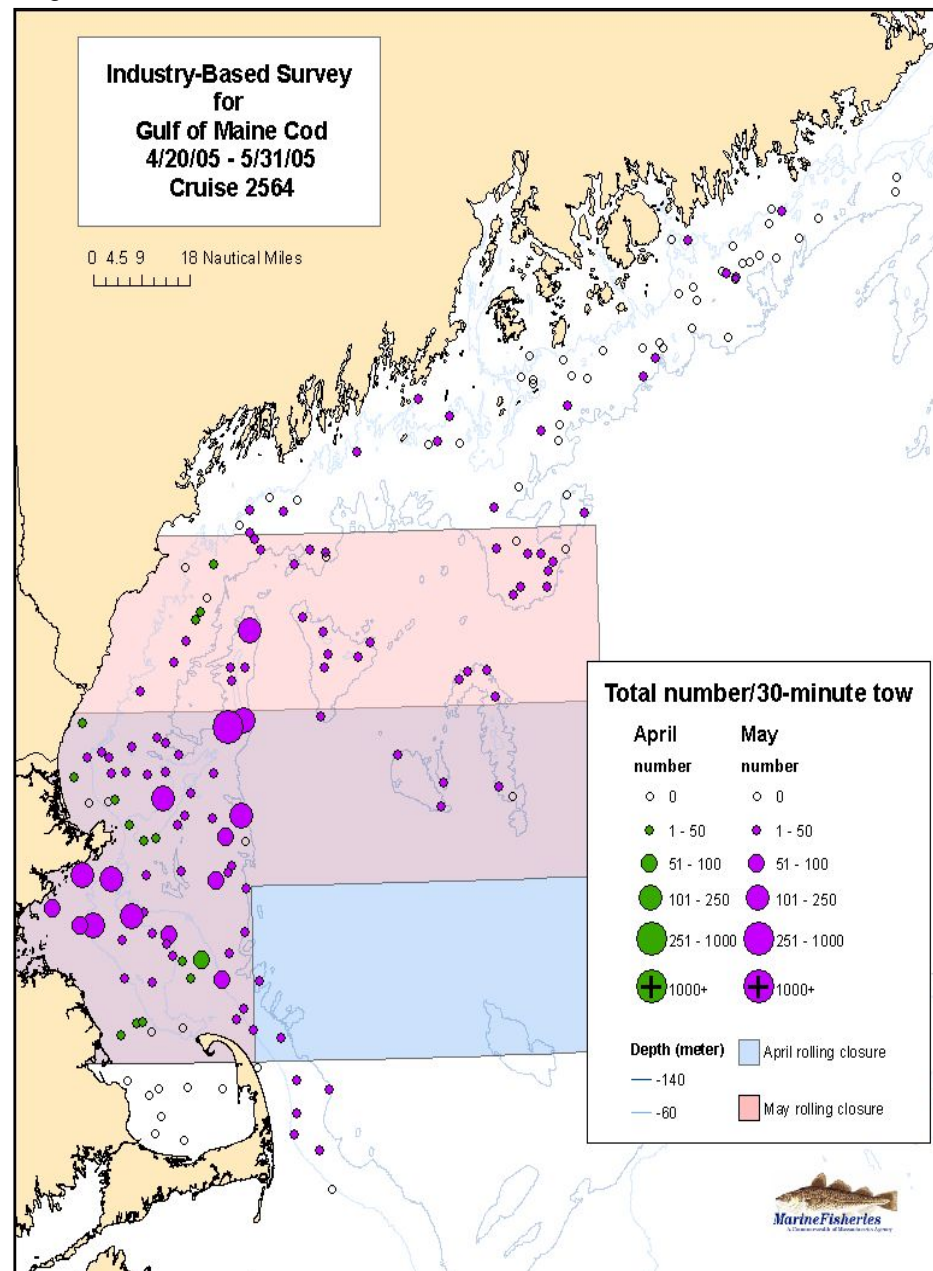
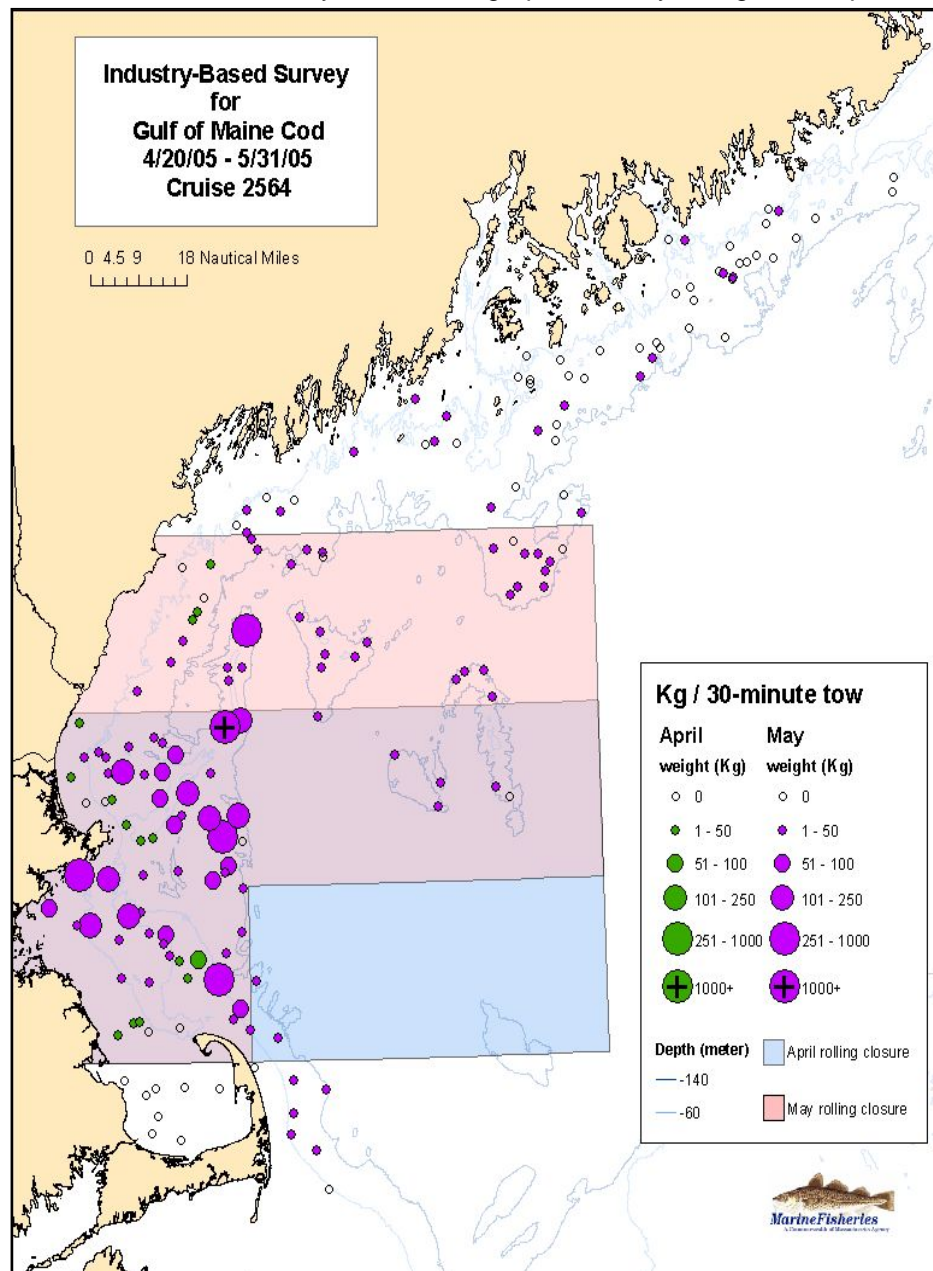
Catch Weight (kg) and Number per Tow

* Survey results during March and April rolling closure periods. Weights and numbers standardized to 30 minutes in duration.



Catch Weight (kg) and Number per Tow

* Survey results during April and May rolling closure periods. Weights and numbers standardized to 30 minutes in duration.



Industry-Based Survey for Gulf of Maine Cod

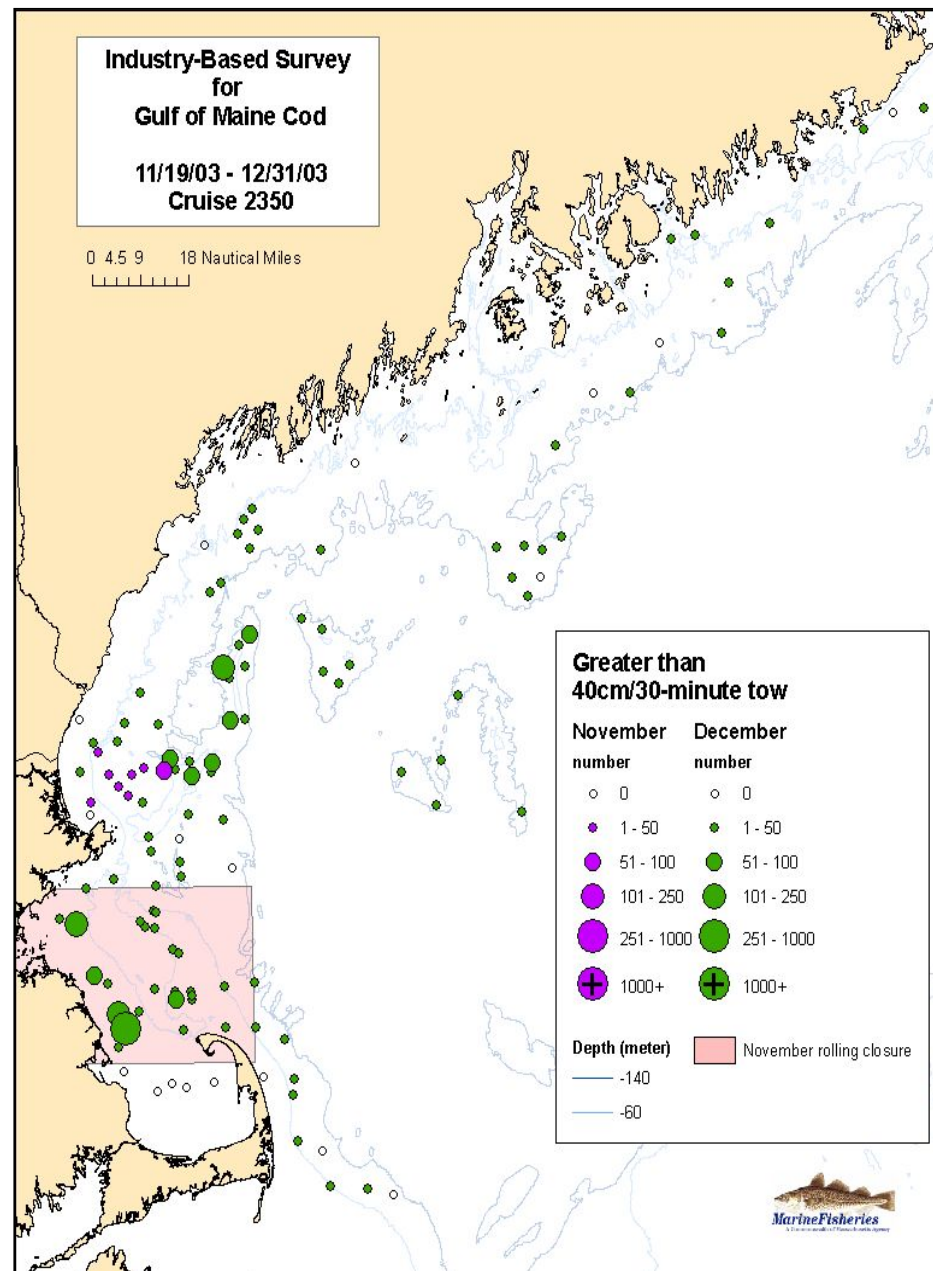
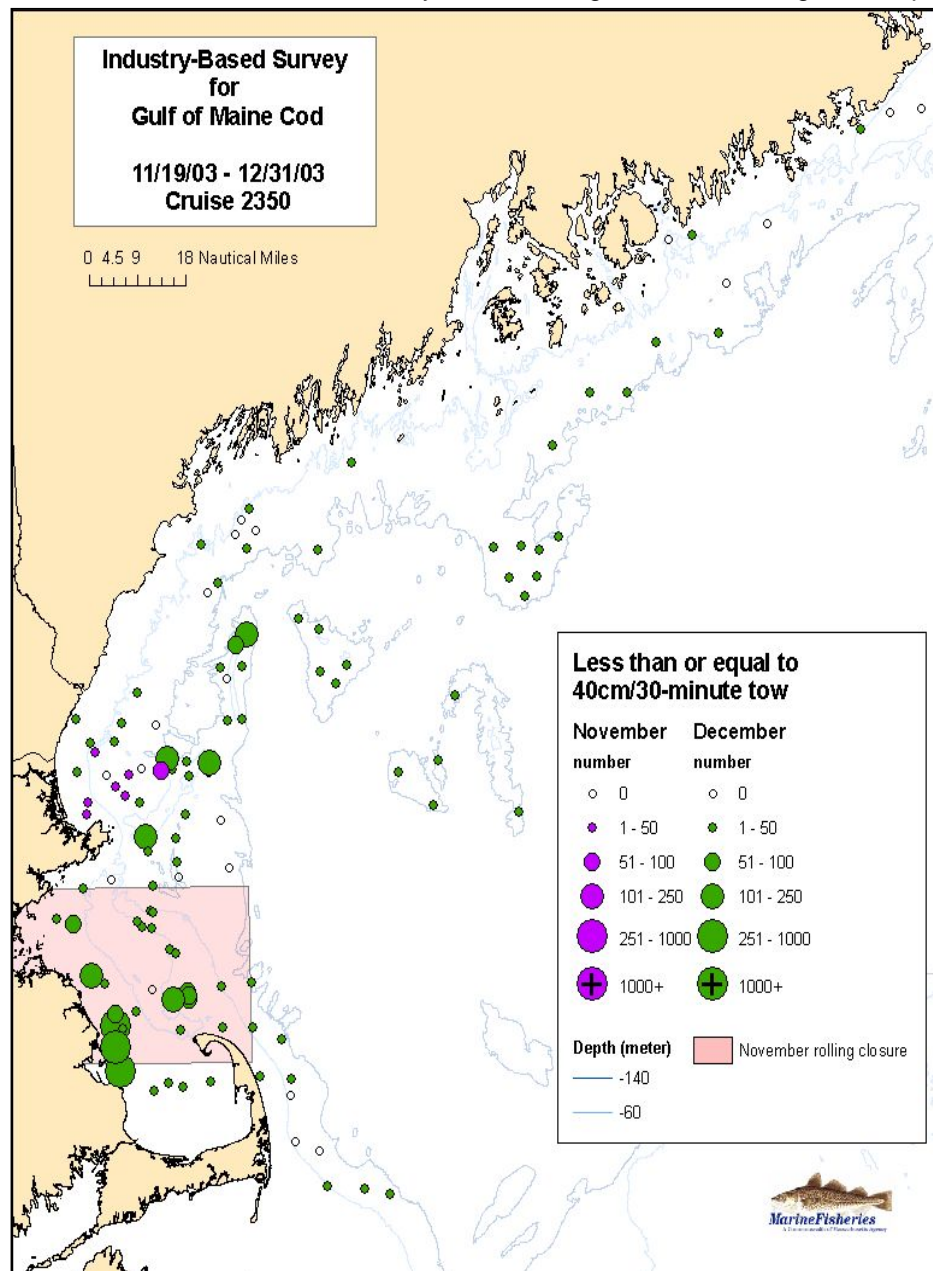
2003 - 2004 Survey Results

Atlantic Cod

Spatial and temporal distribution by number less than or equal to 40 cm (approximates juveniles) and number greater than 40 cm (approximates adults)

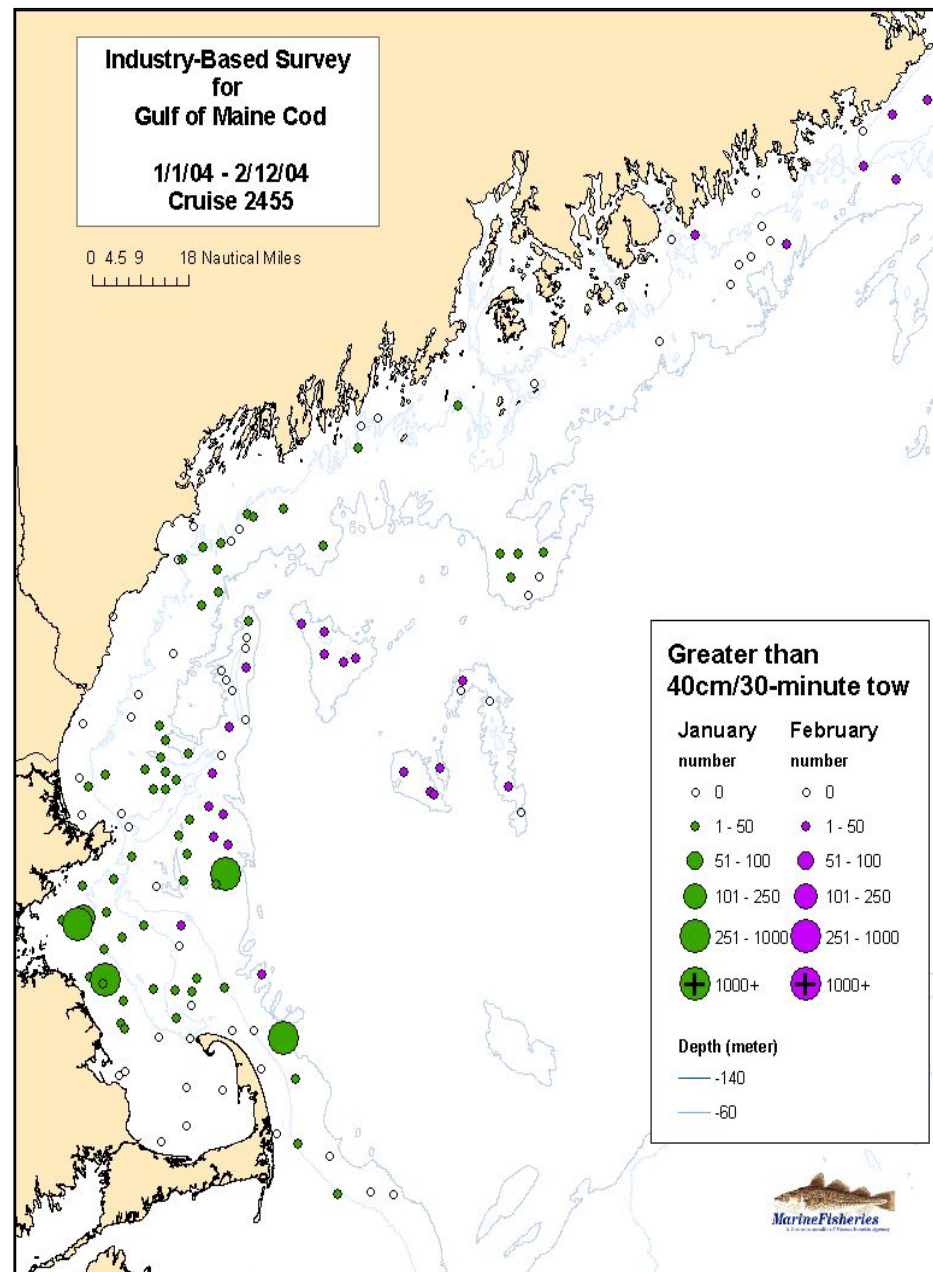
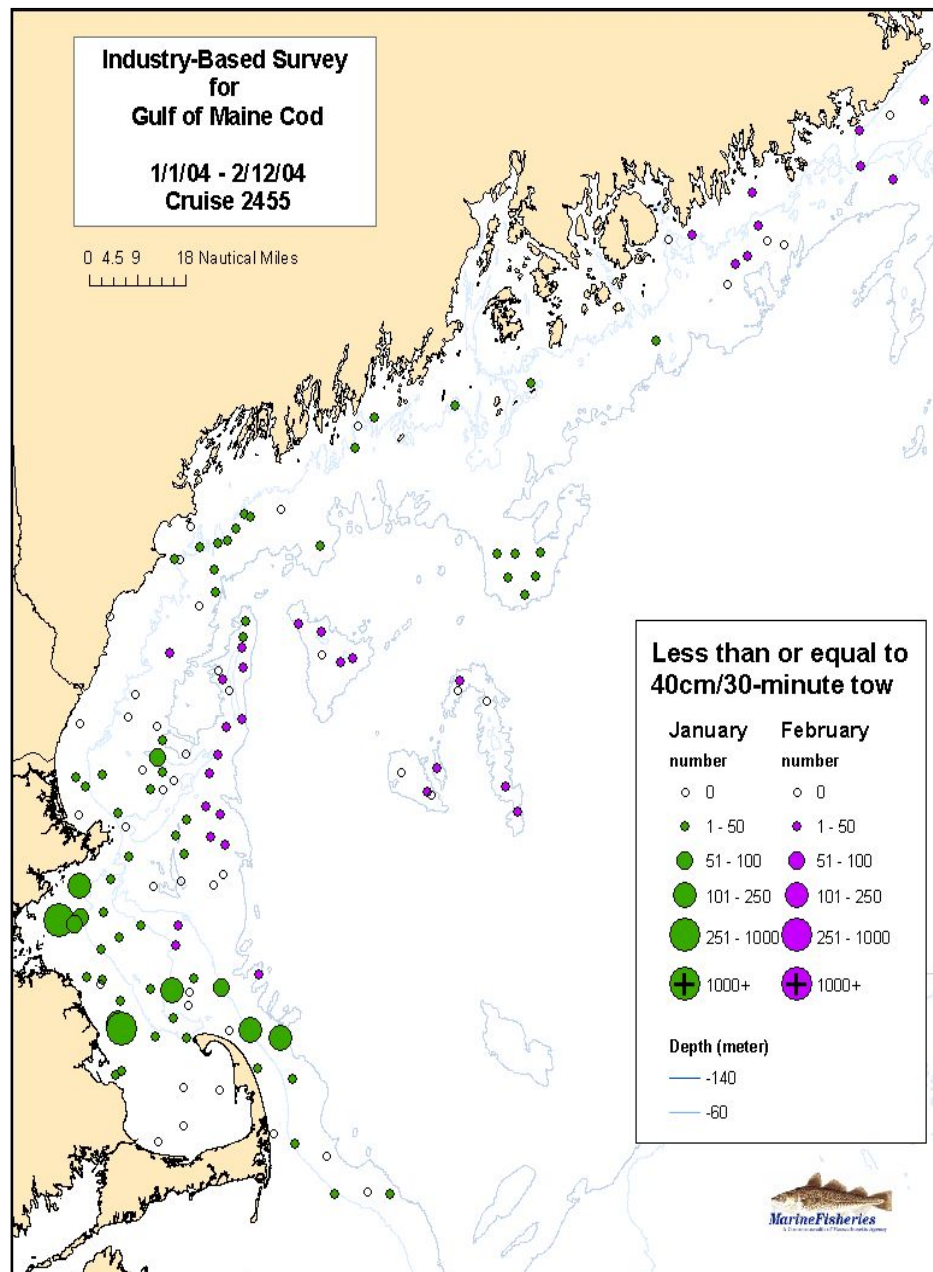
Number Less Than or Equal 40 cm and Number Greater Than 40 cm per Tow

* Survey results during November rolling closure period. Numbers standardized to 30 minutes in duration.



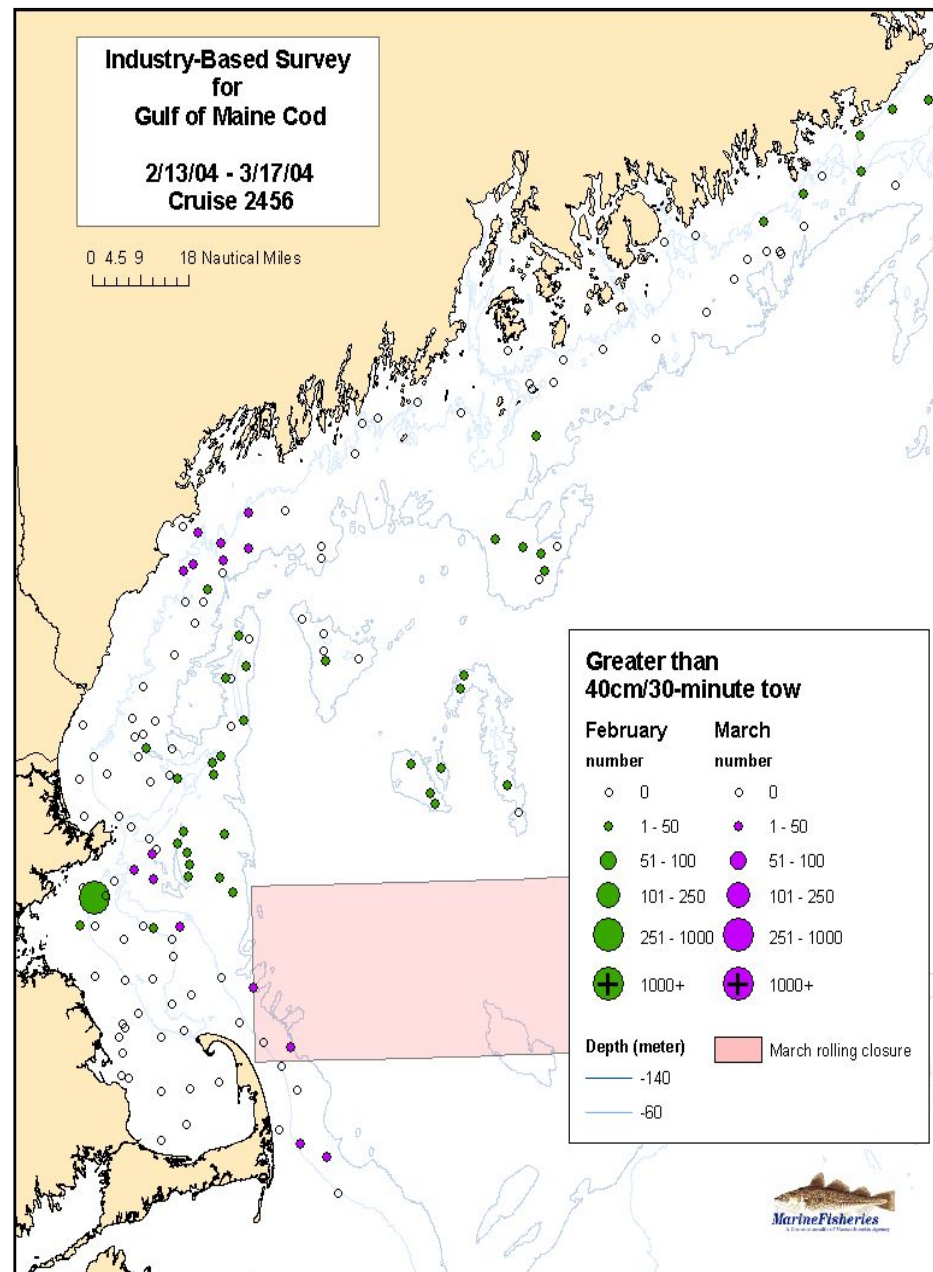
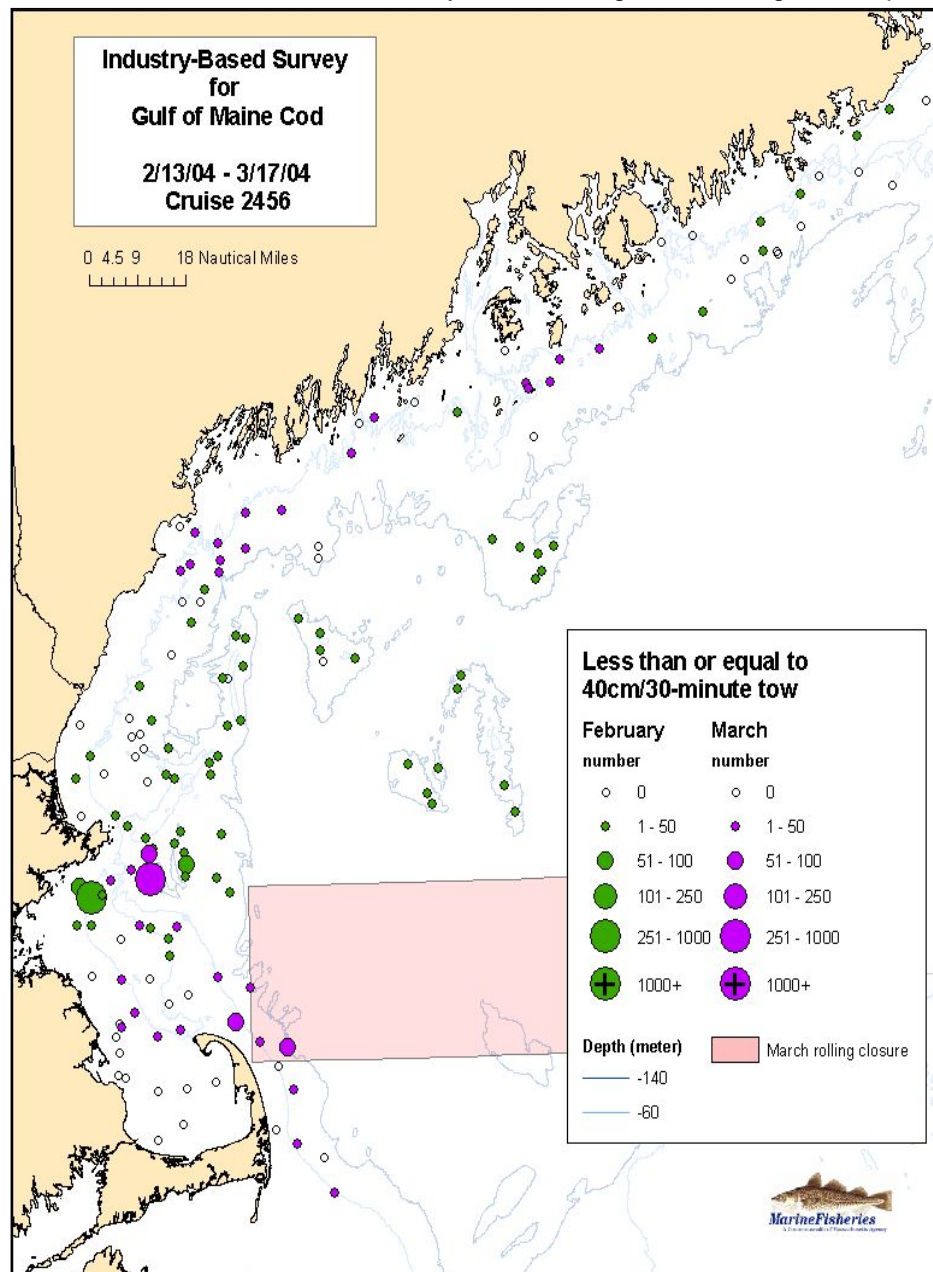
Number Less Than or Equal 40 cm and Number Greater Than 40 cm per Tow

* Numbers standardized to 30 minutes in duration.



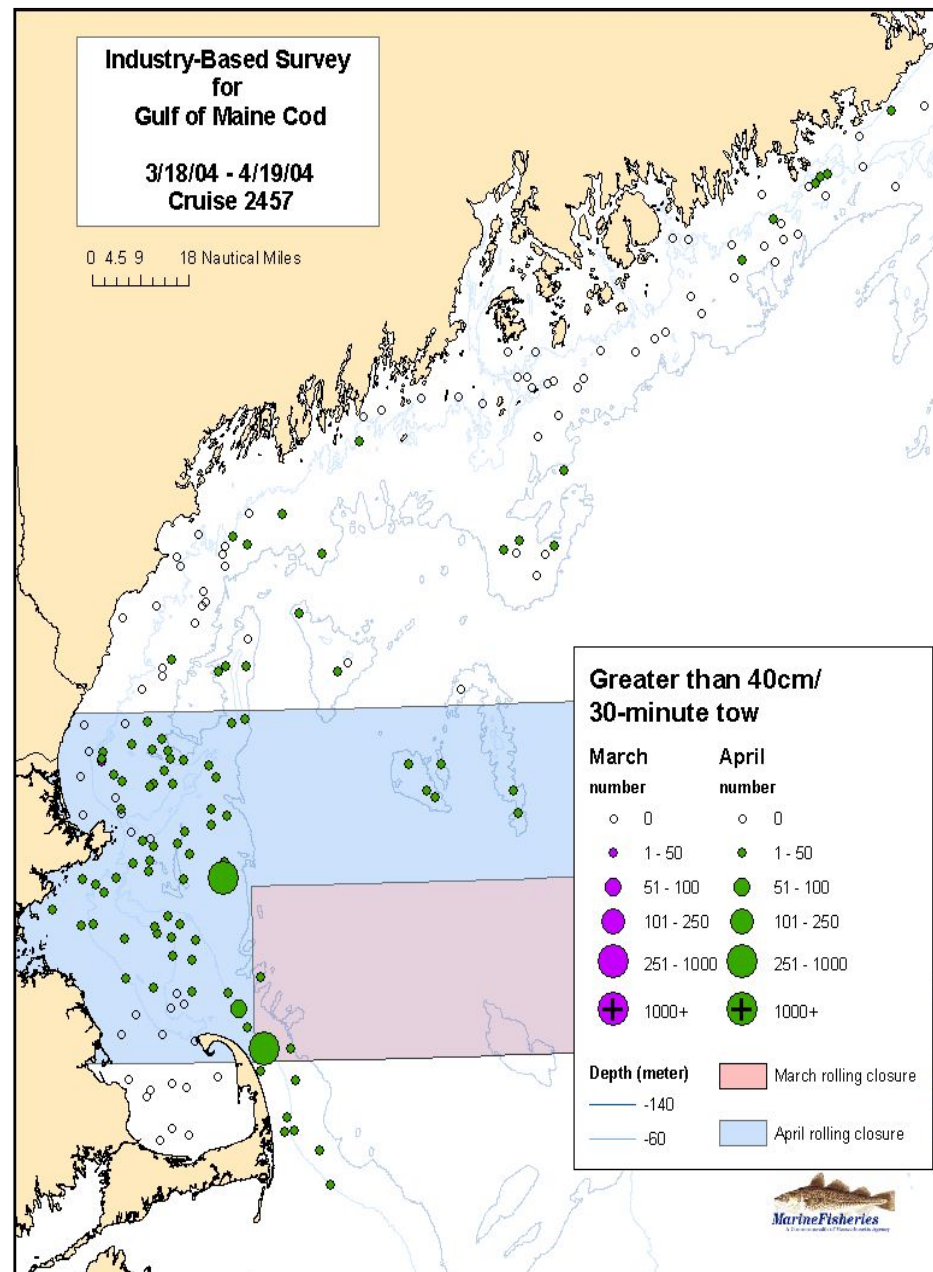
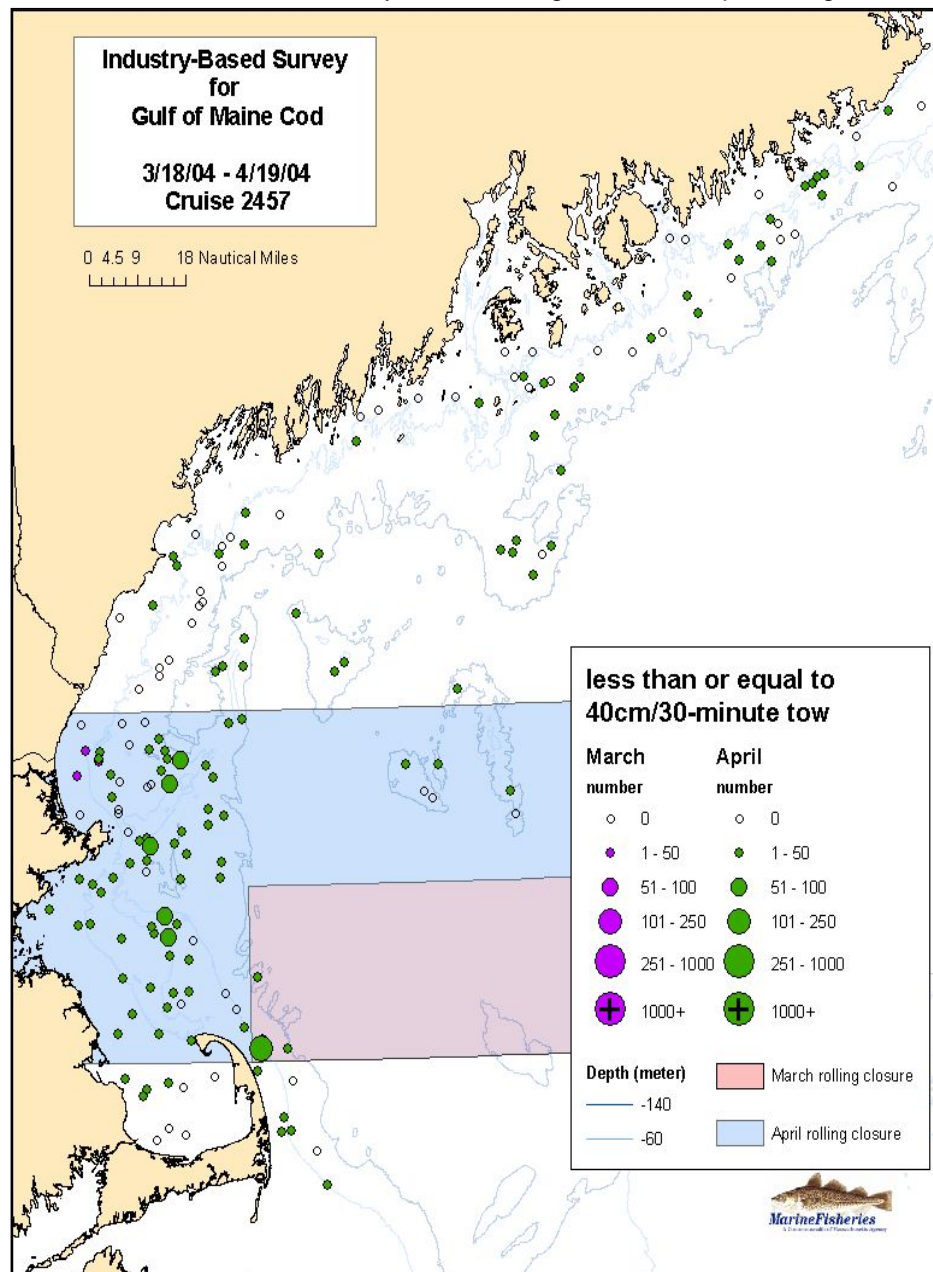
Number Less Than or Equal 40 cm and Number Greater Than 40 cm per Tow

* Survey results during March rolling closure period. Numbers standardized to 30 minutes in duration.



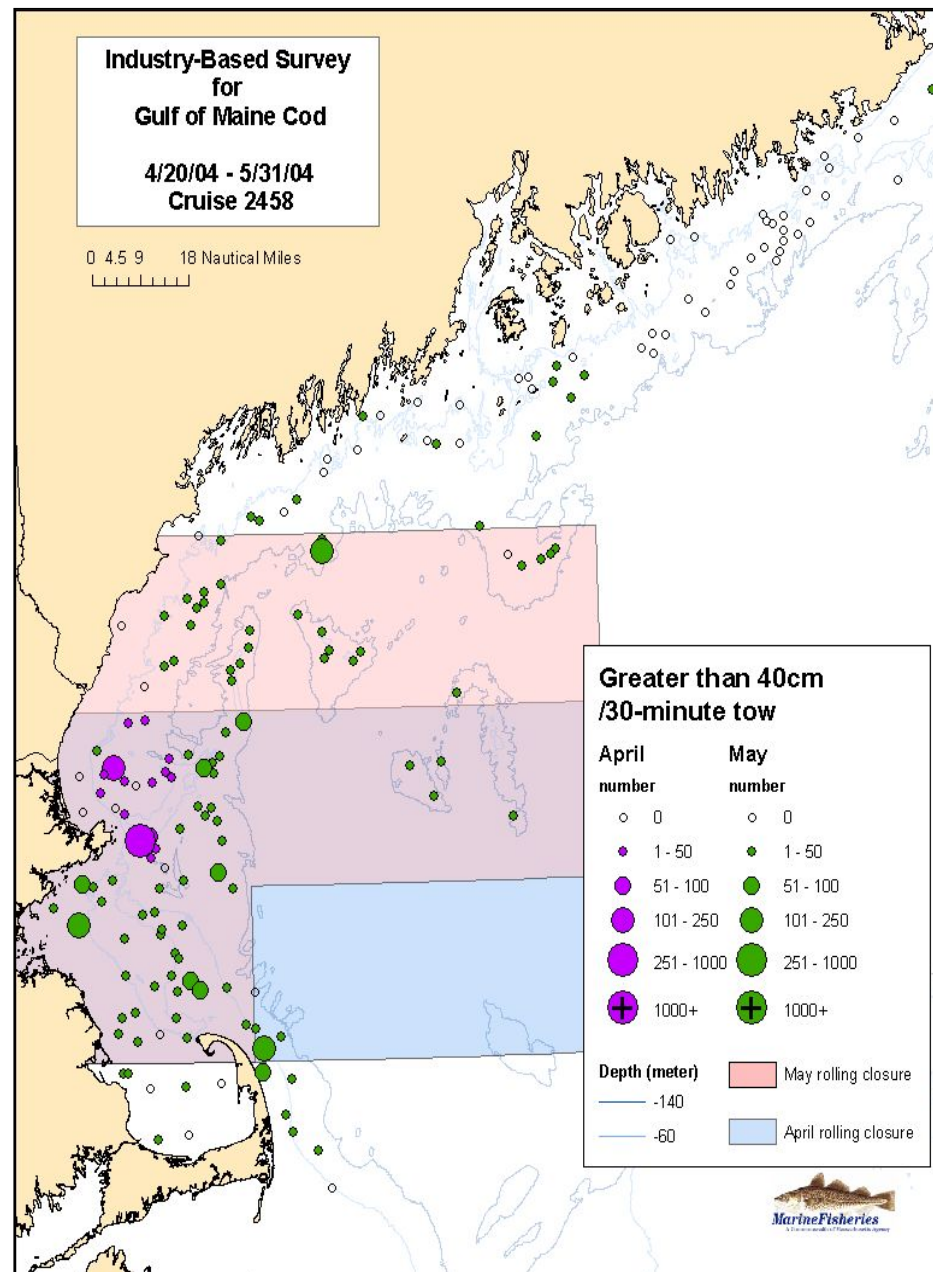
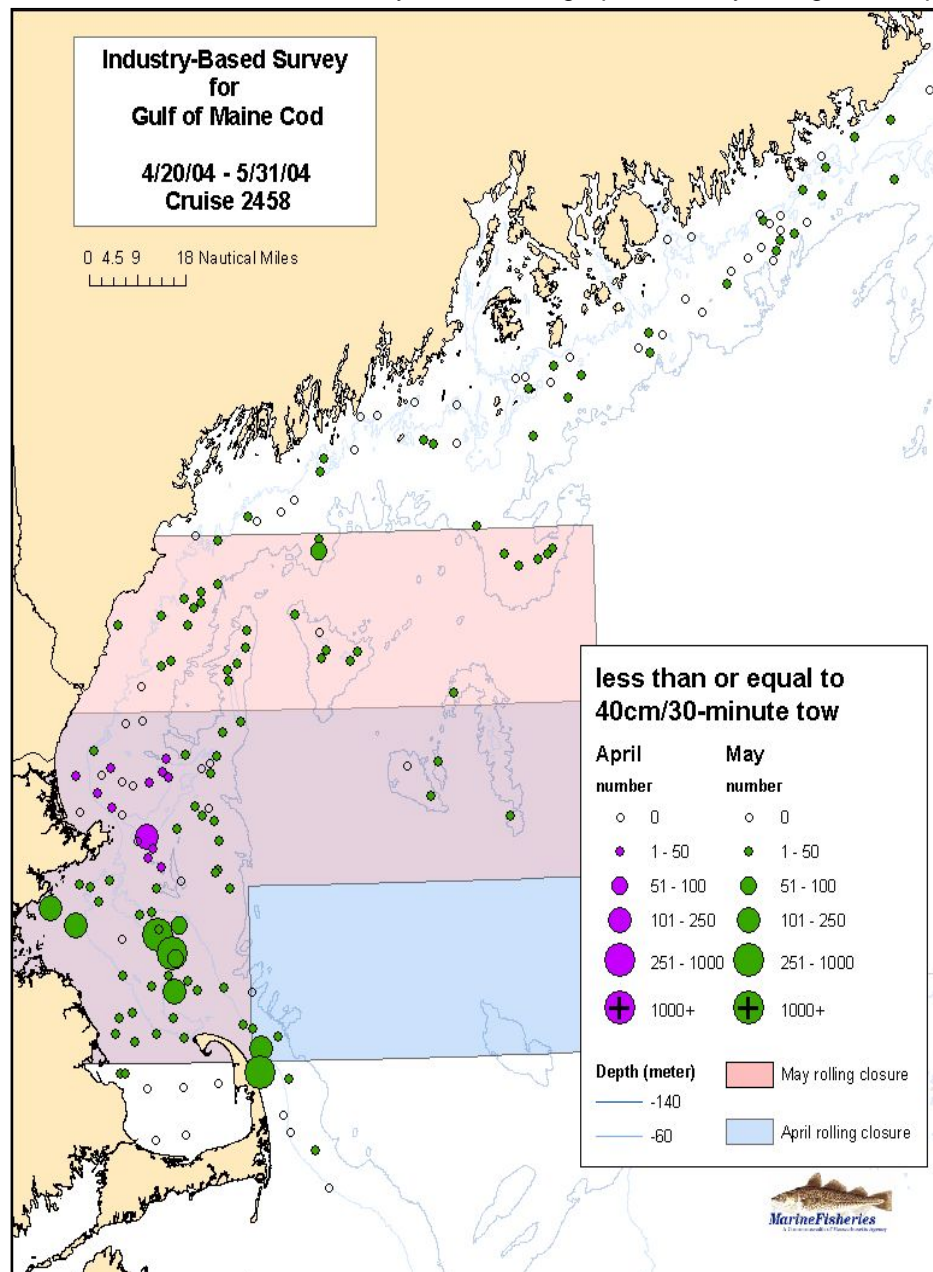
Number Less Than or Equal 40 cm and Number Greater Than 40 cm per Tow

* Survey results during March and April rolling closure periods. Numbers standardized to 30 minutes in duration.



Number Less Than or Equal 40 cm and Number Greater Than 40 cm per Tow

* Survey results during April and May rolling closure periods. Numbers standardized to 30 minutes in duration.



Industry-Based Survey for Gulf of Maine Cod

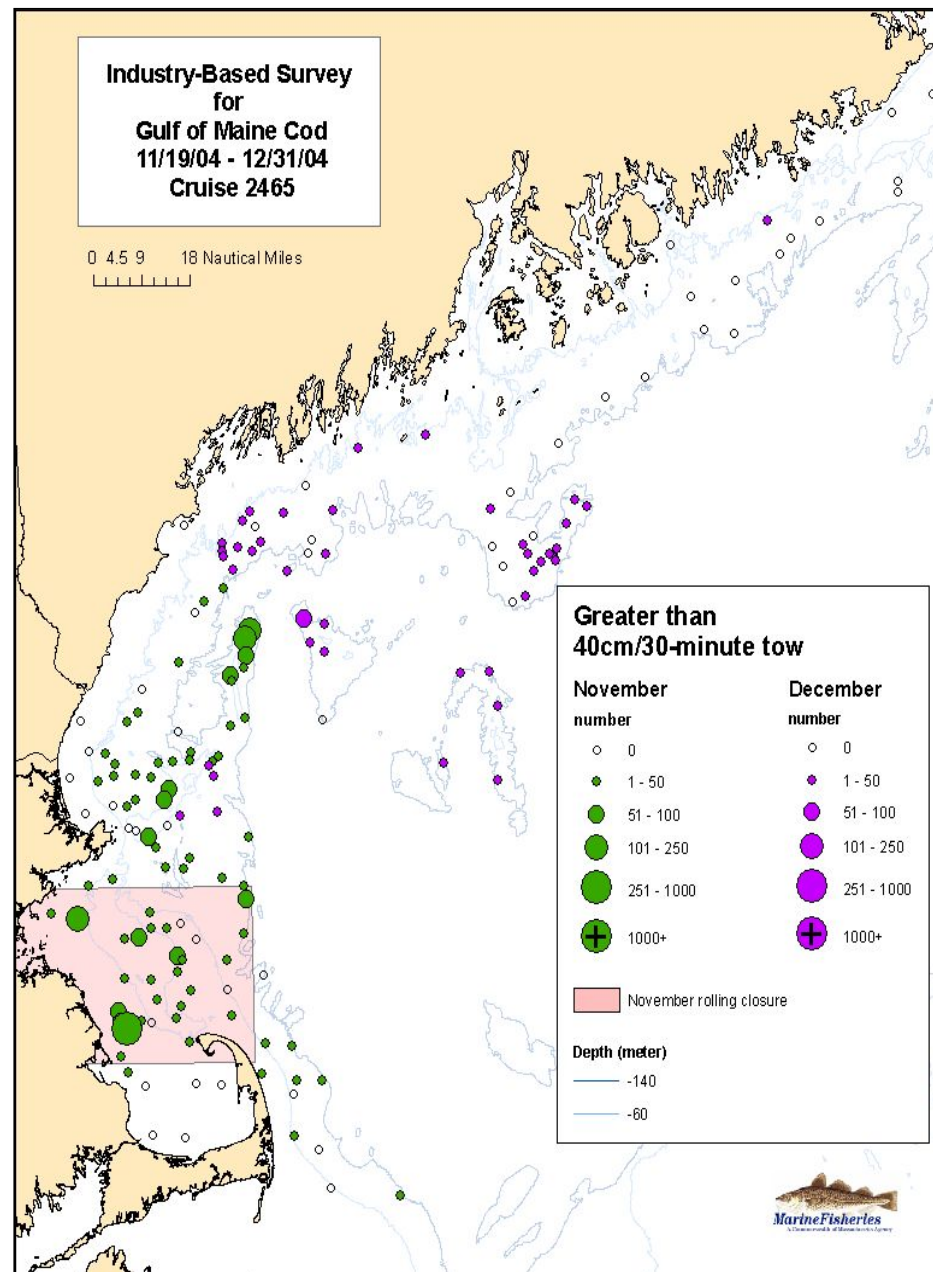
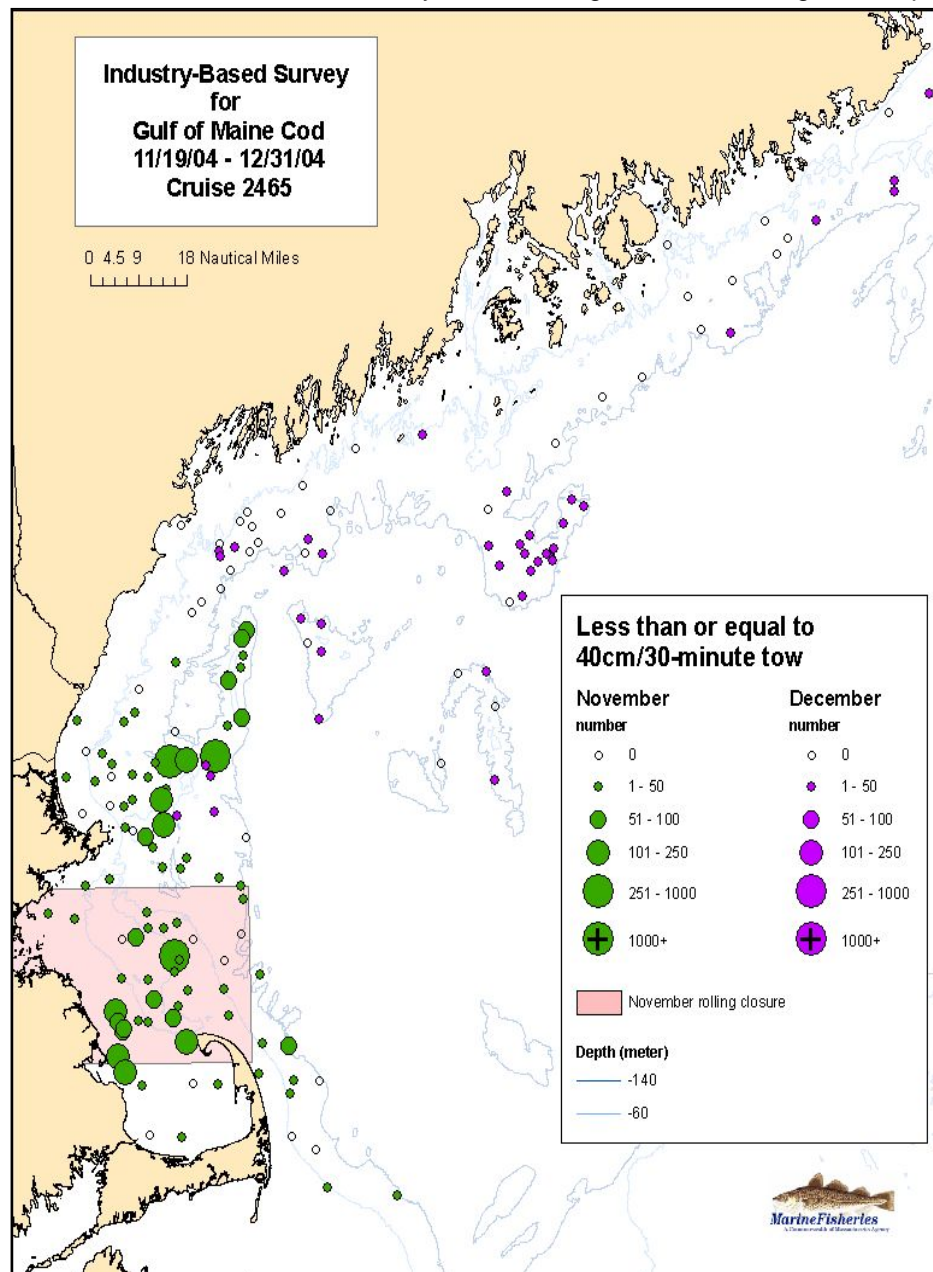
2004 - 2005 Survey Results

Atlantic Cod

Spatial and temporal distribution by number less than or equal to 40 cm (approximates juveniles) and number greater than 40 cm (approximates adults)

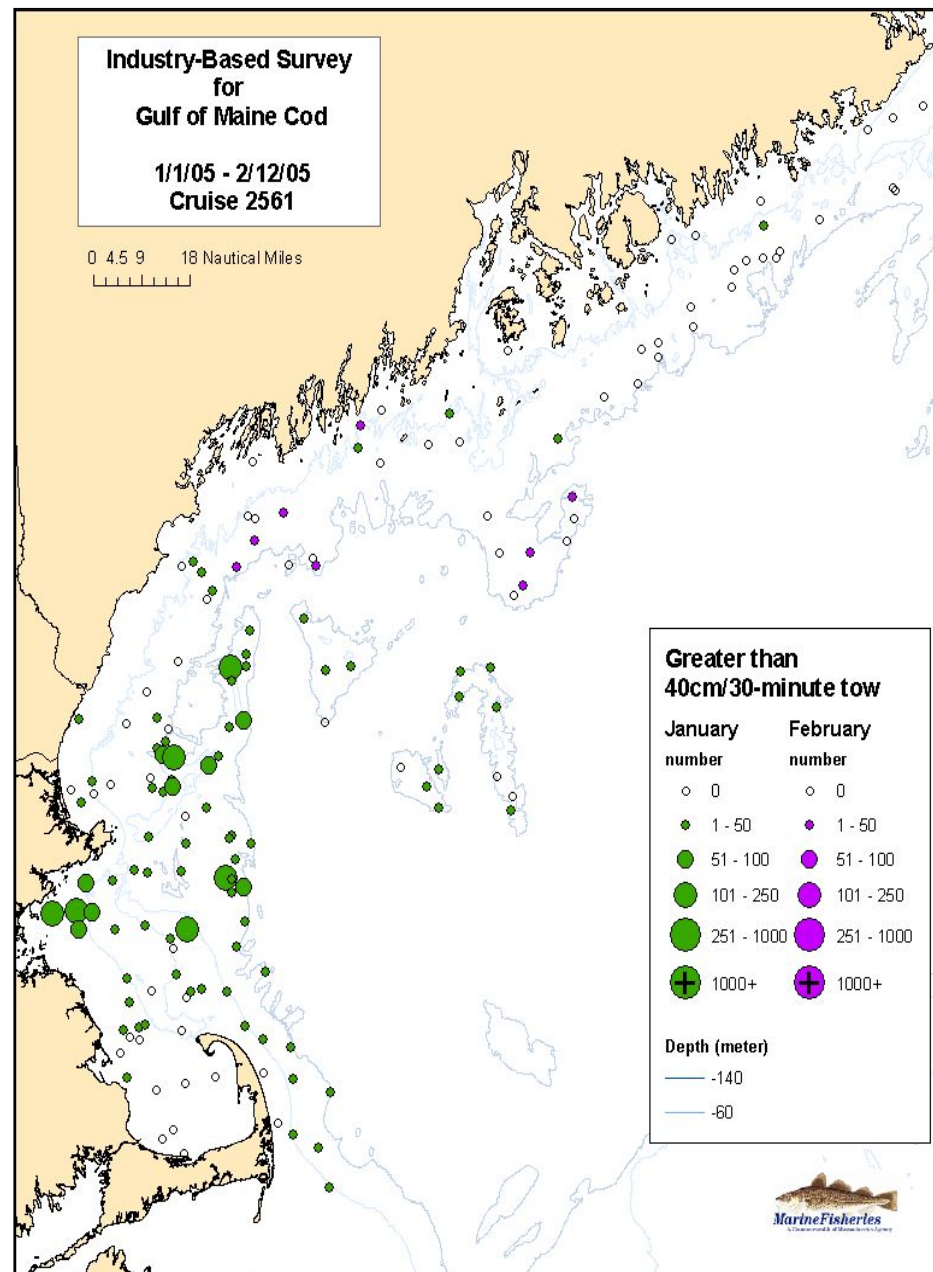
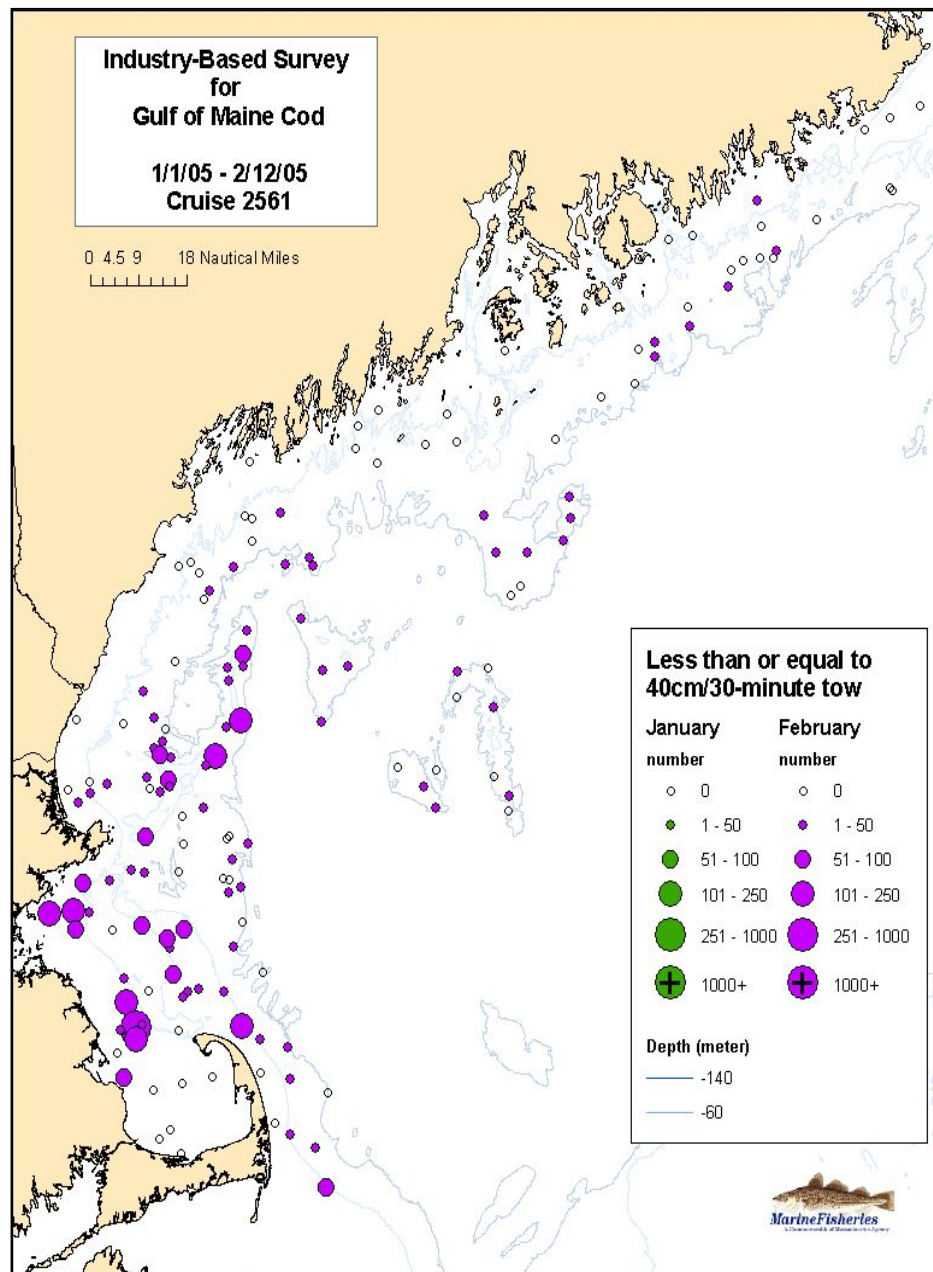
Number Less Than or Equal 40 cm and Number Greater Than 40 cm per Tow

* Survey results during November rolling closure period. Numbers standardized to 30 minutes in duration.



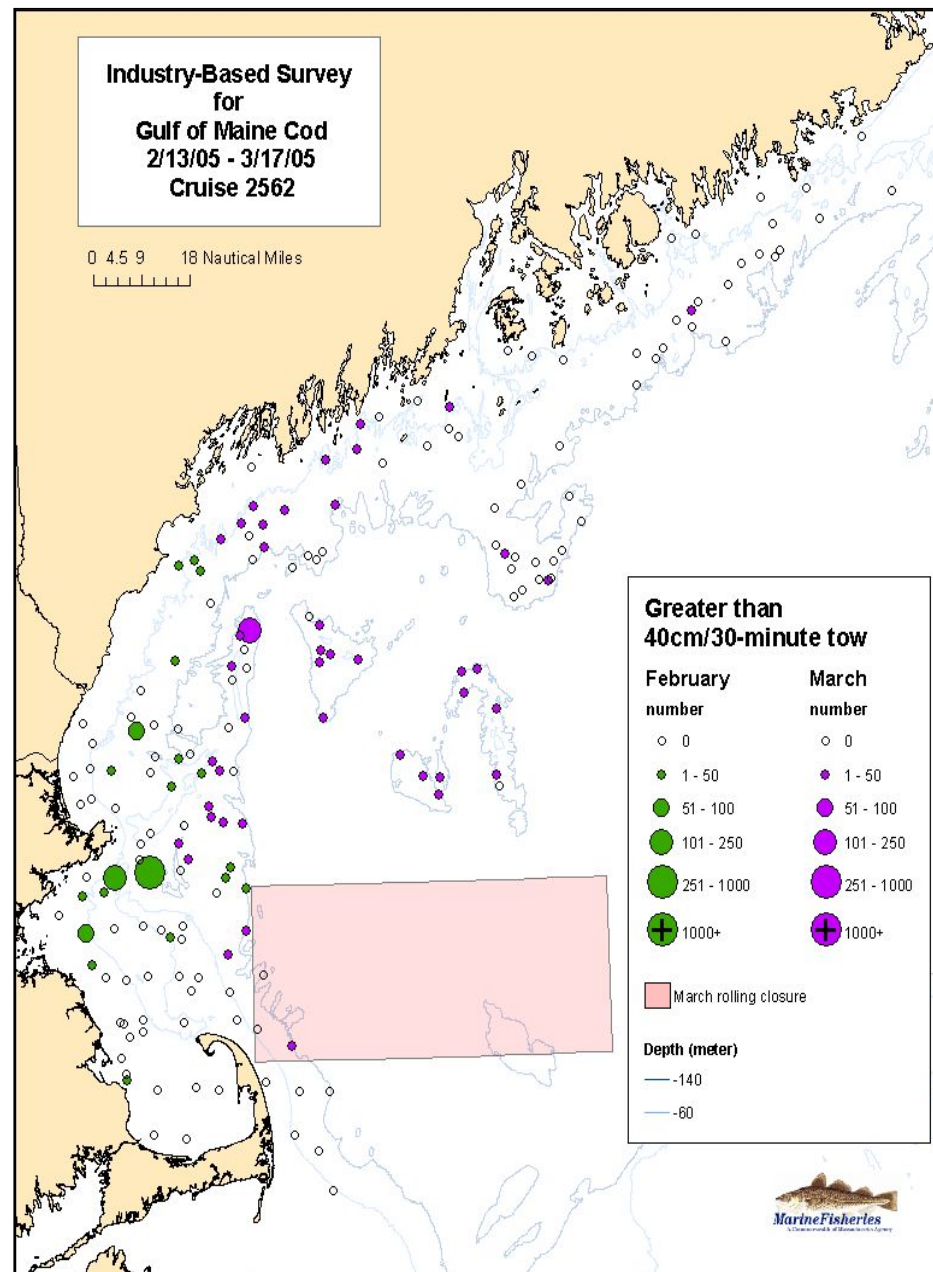
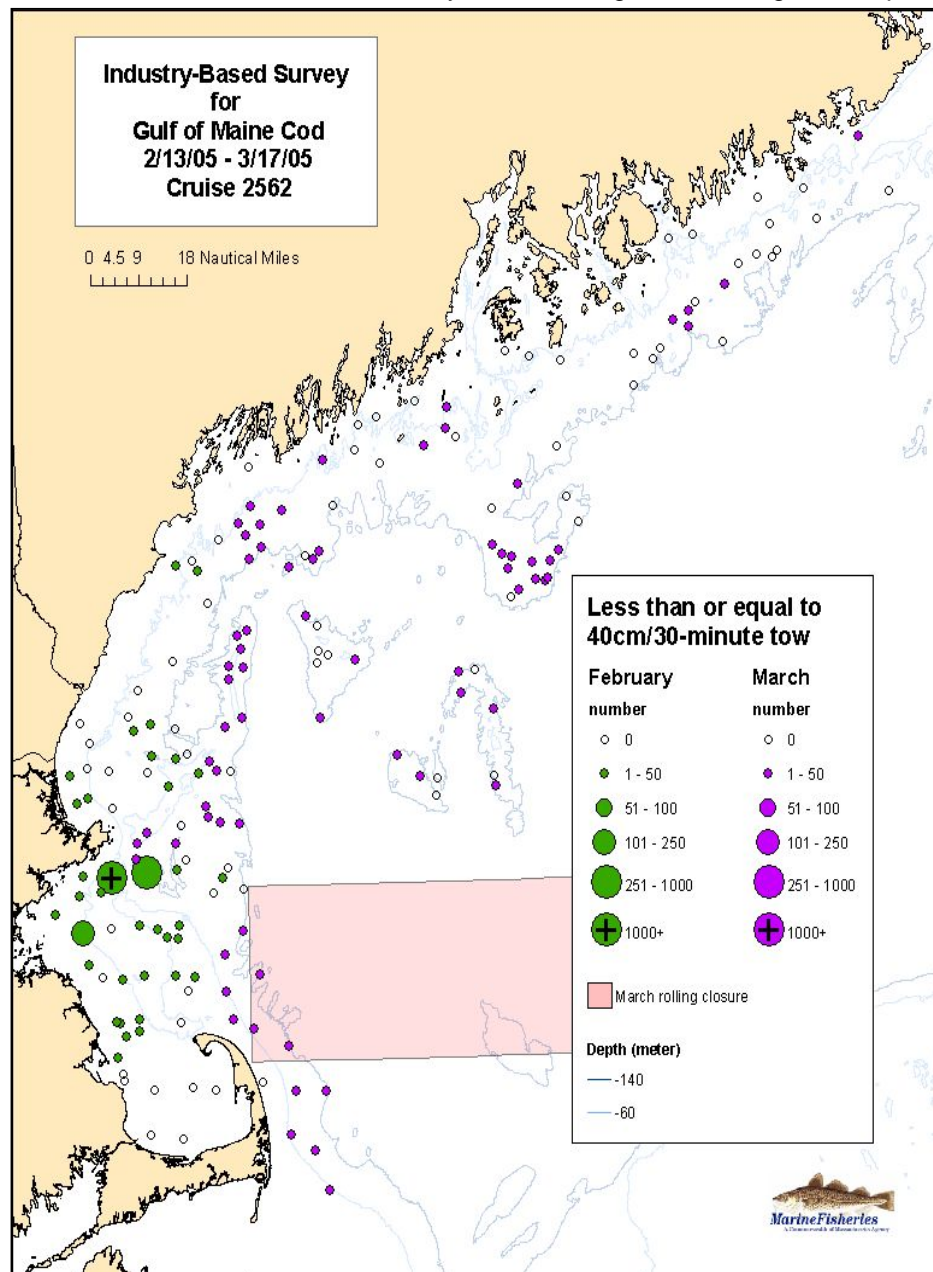
Number Less Than or Equal 40 cm and Number Greater Than 40 cm per Tow

* Numbers standardized to 30 minutes in duration.



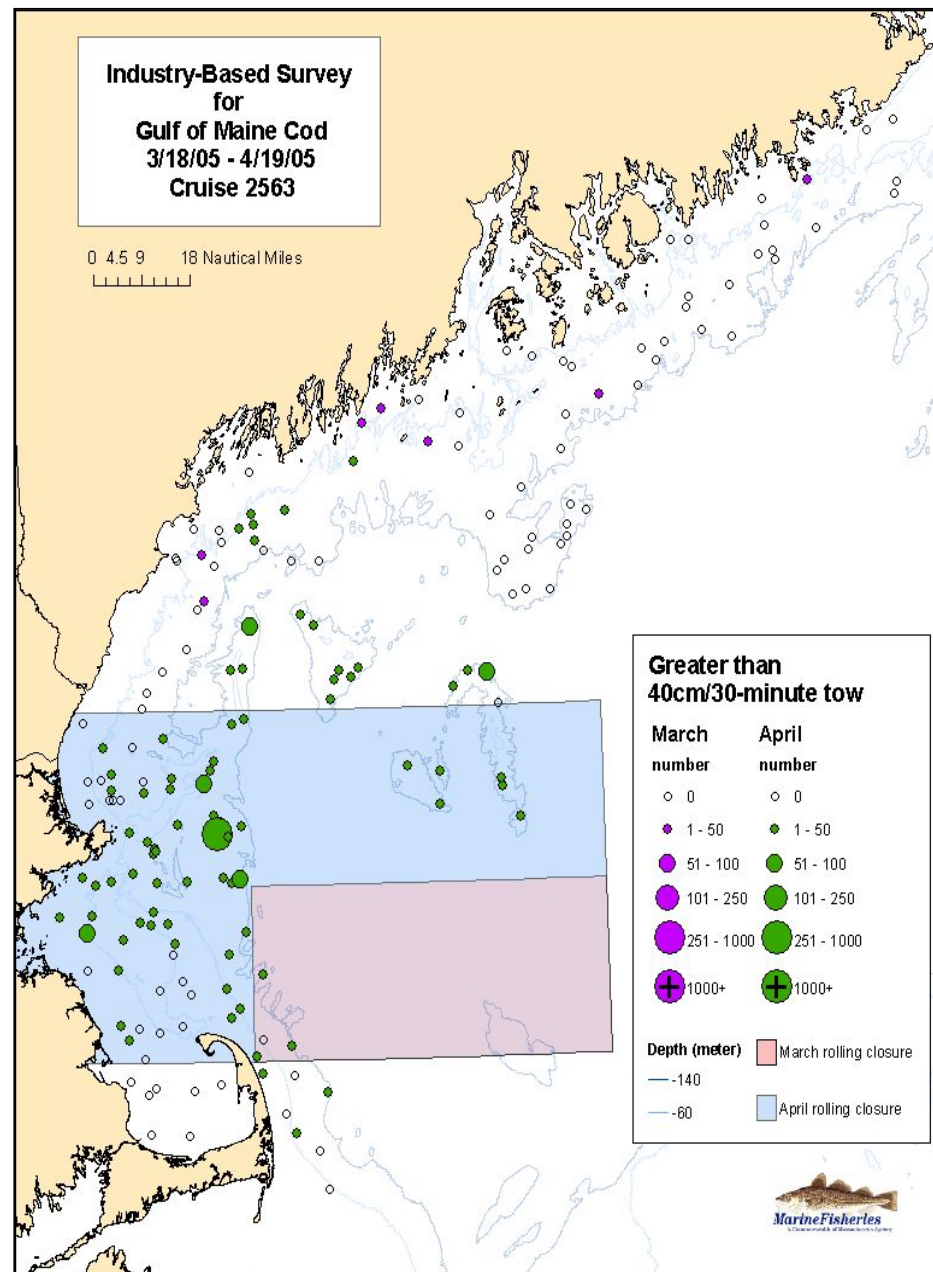
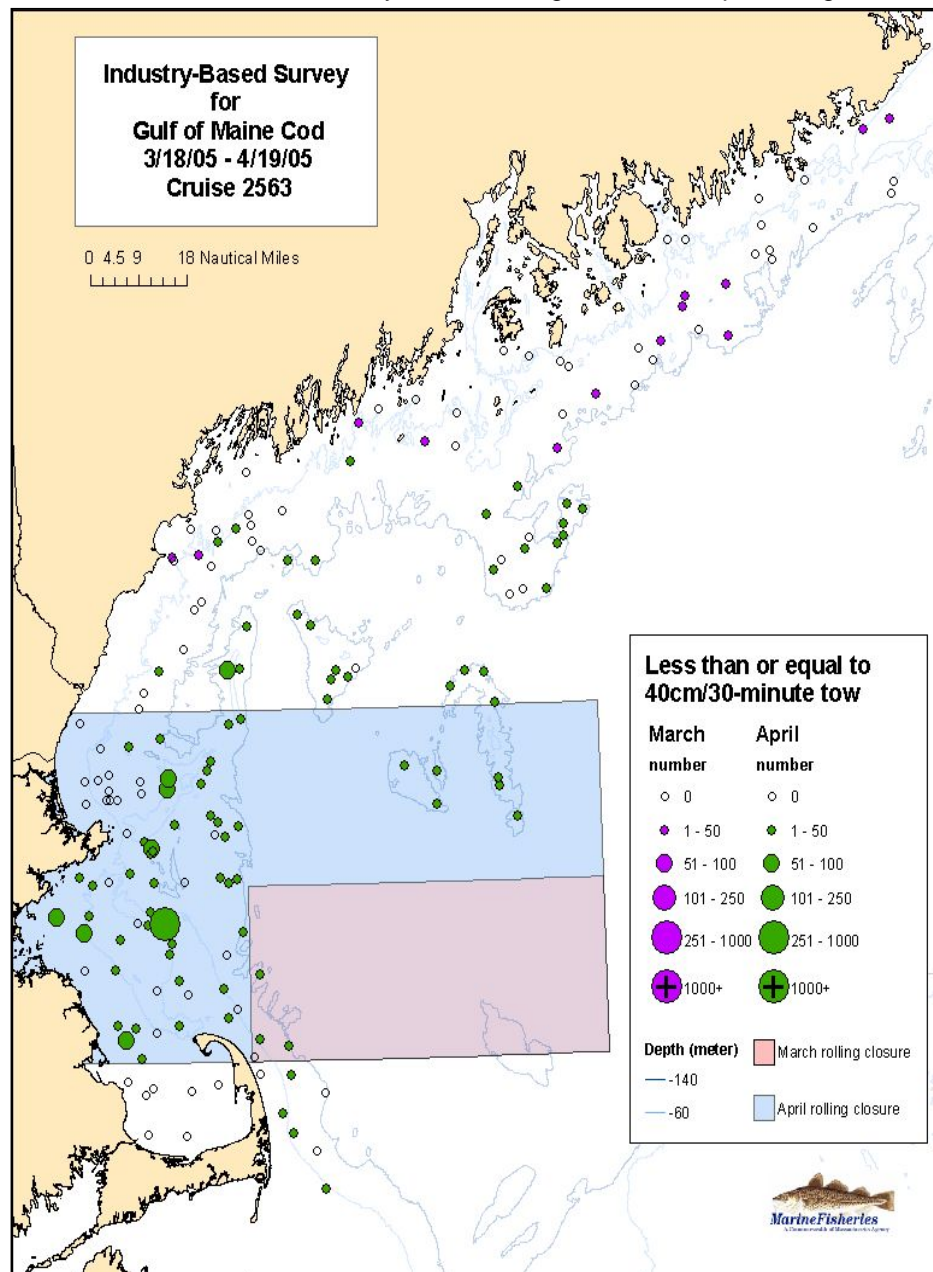
Number Less Than or Equal 40 cm and Number Greater Than 40 cm per Tow

* Survey results during March rolling closure period. Numbers standardized to 30 minutes in duration.



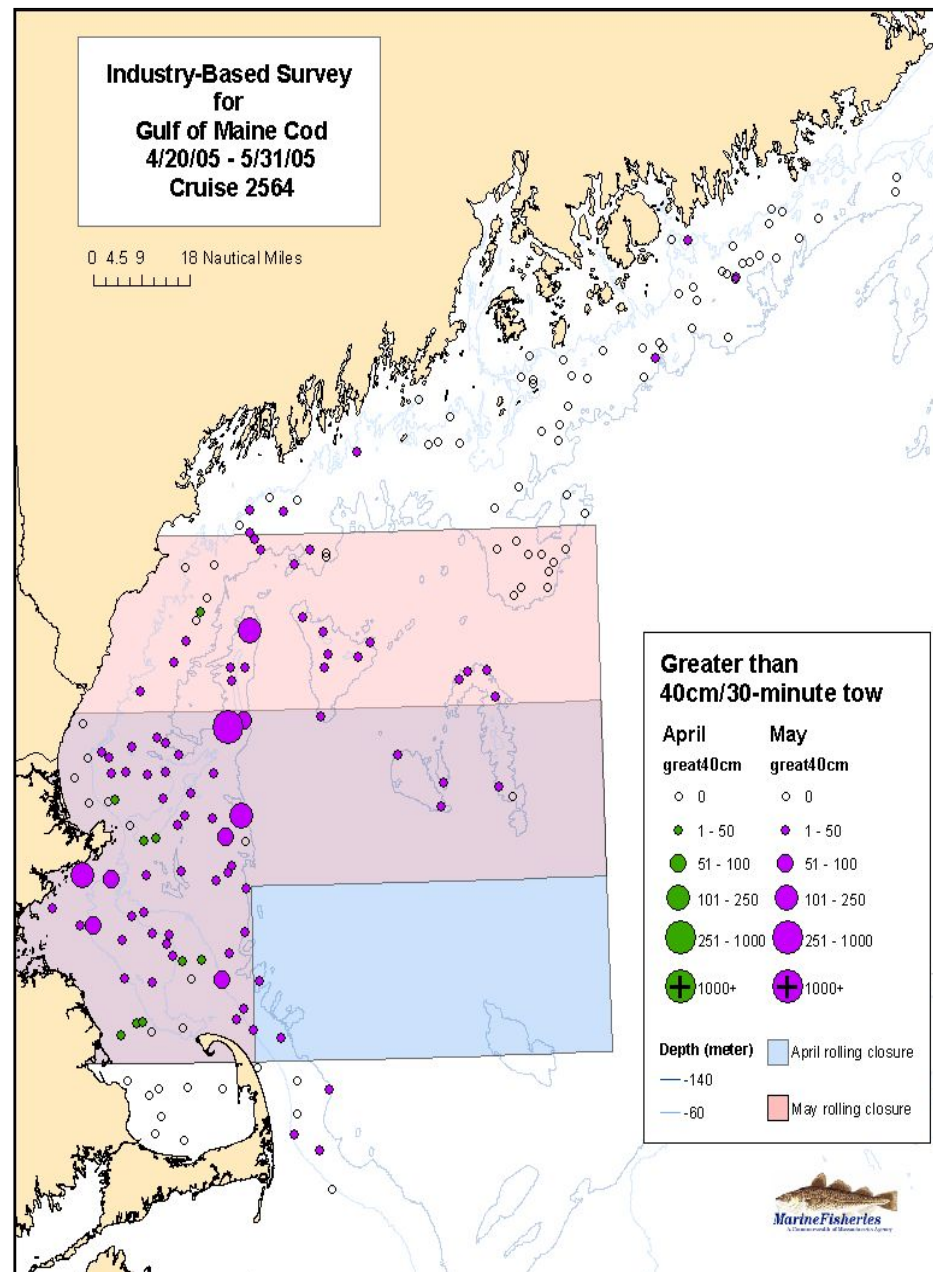
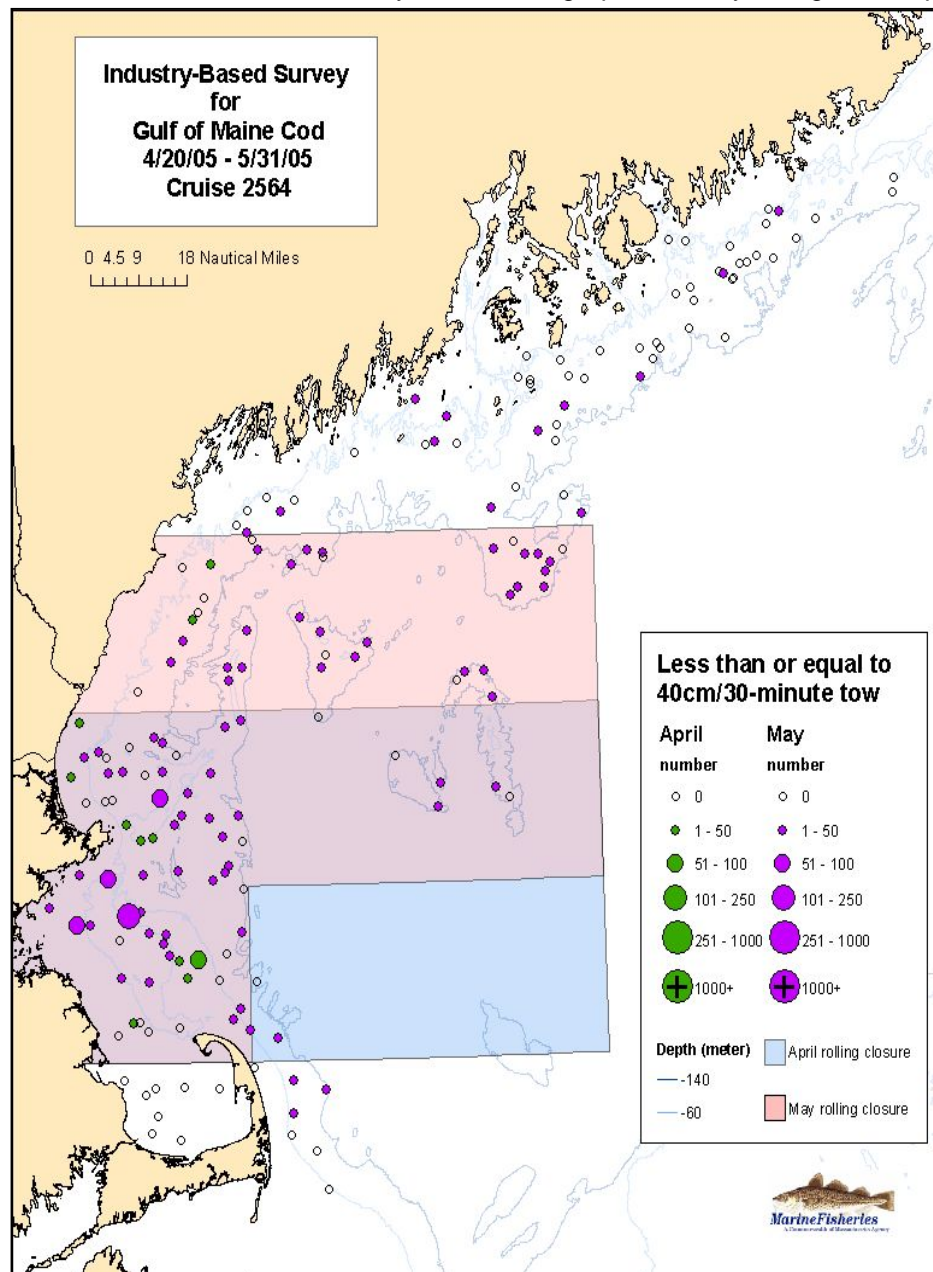
Number Less Than or Equal 40 cm and Number Greater Than 40 cm per Tow

* Survey results during March and April rolling closure periods. Numbers standardized to 30 minutes in duration.



Number Less Than or Equal 40 cm and Number Greater Than 40 cm per Tow

* Survey results during April and May rolling closure periods. Numbers standardized to 30 minutes in duration.



Industry-Based Survey for Gulf of Maine Cod

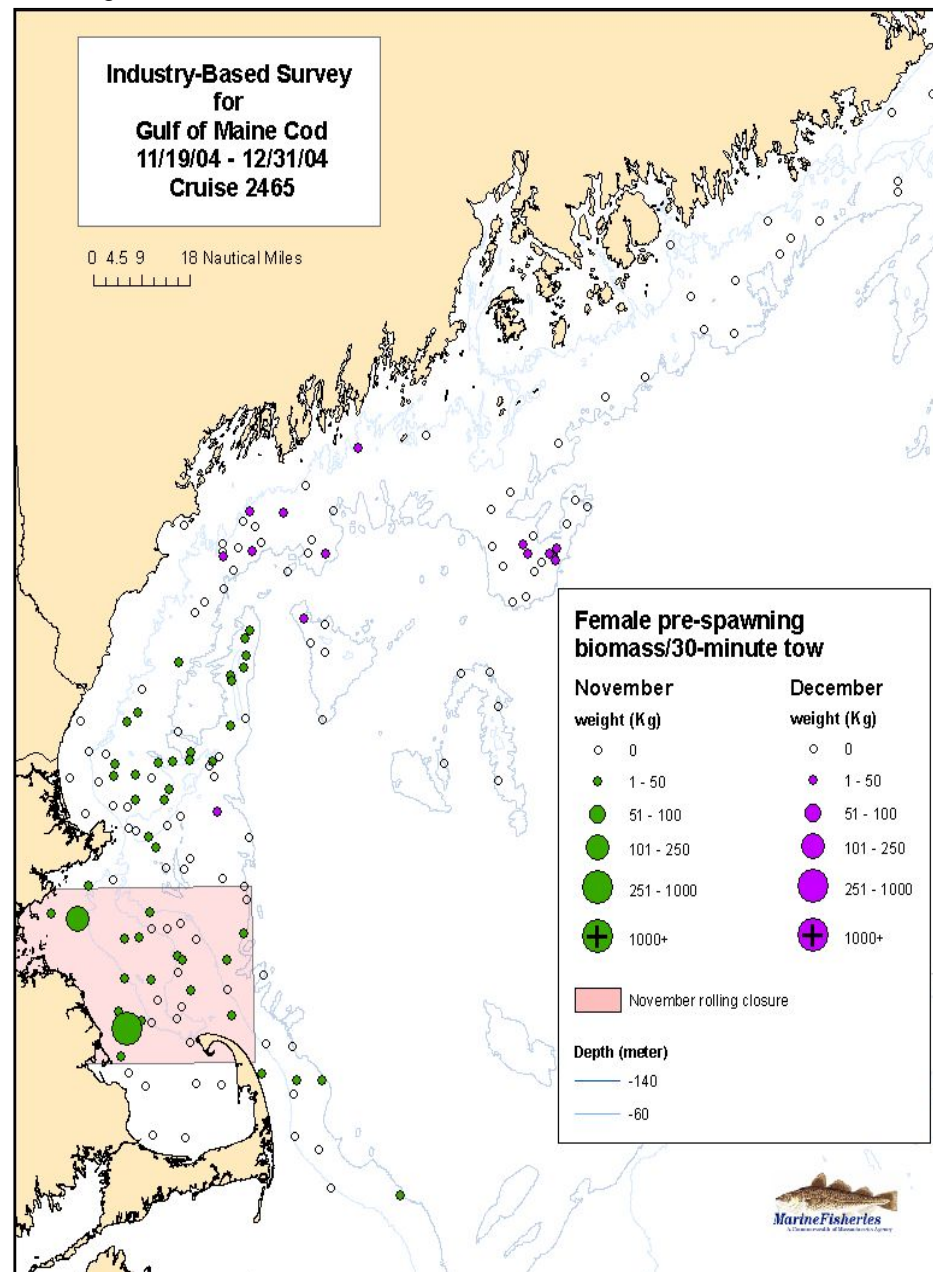
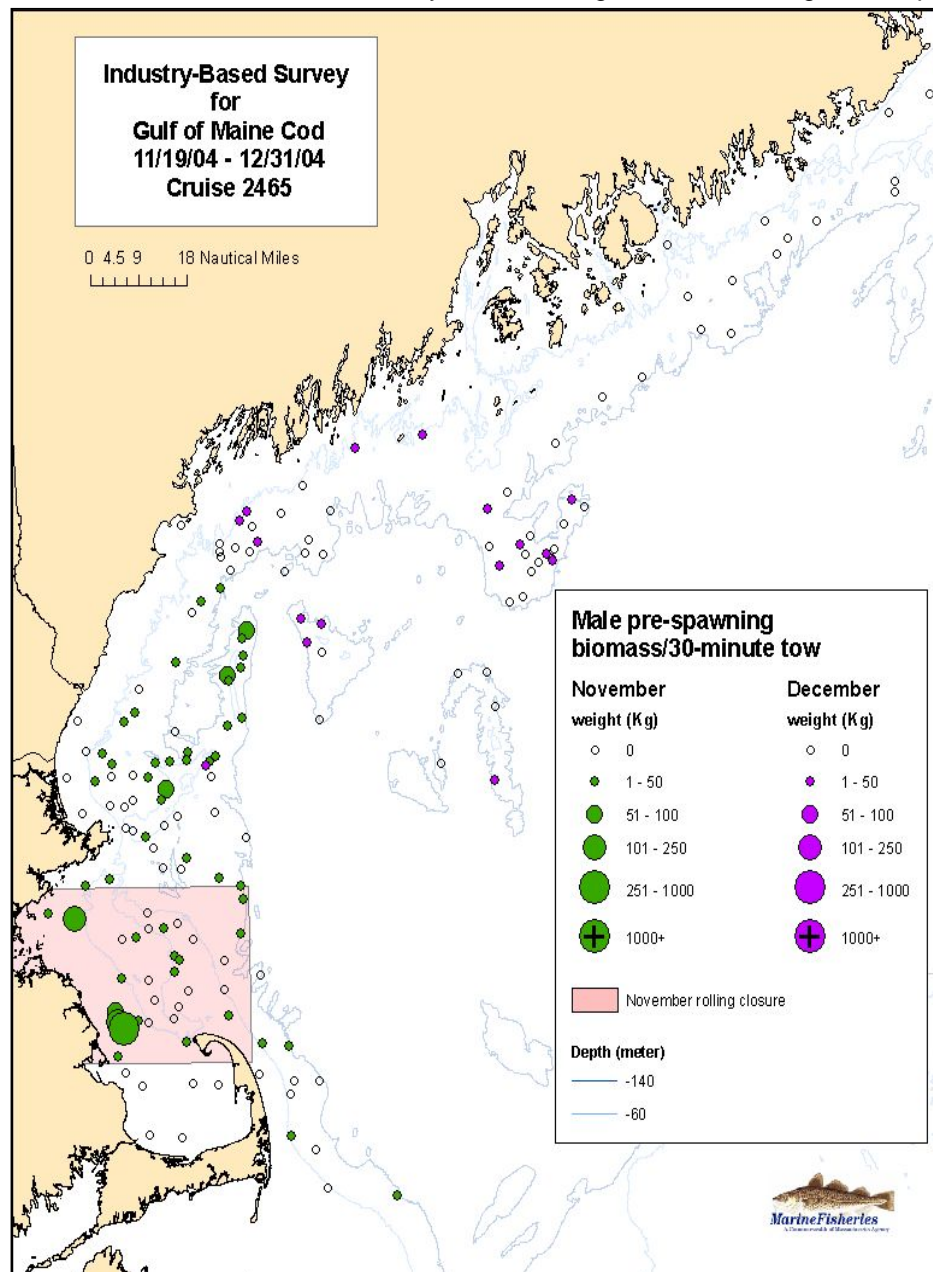
2004 - 2005 Survey Results

Atlantic Cod

Spatial and temporal distribution by sex of estimated
prespawning condition biomass (developing fish)

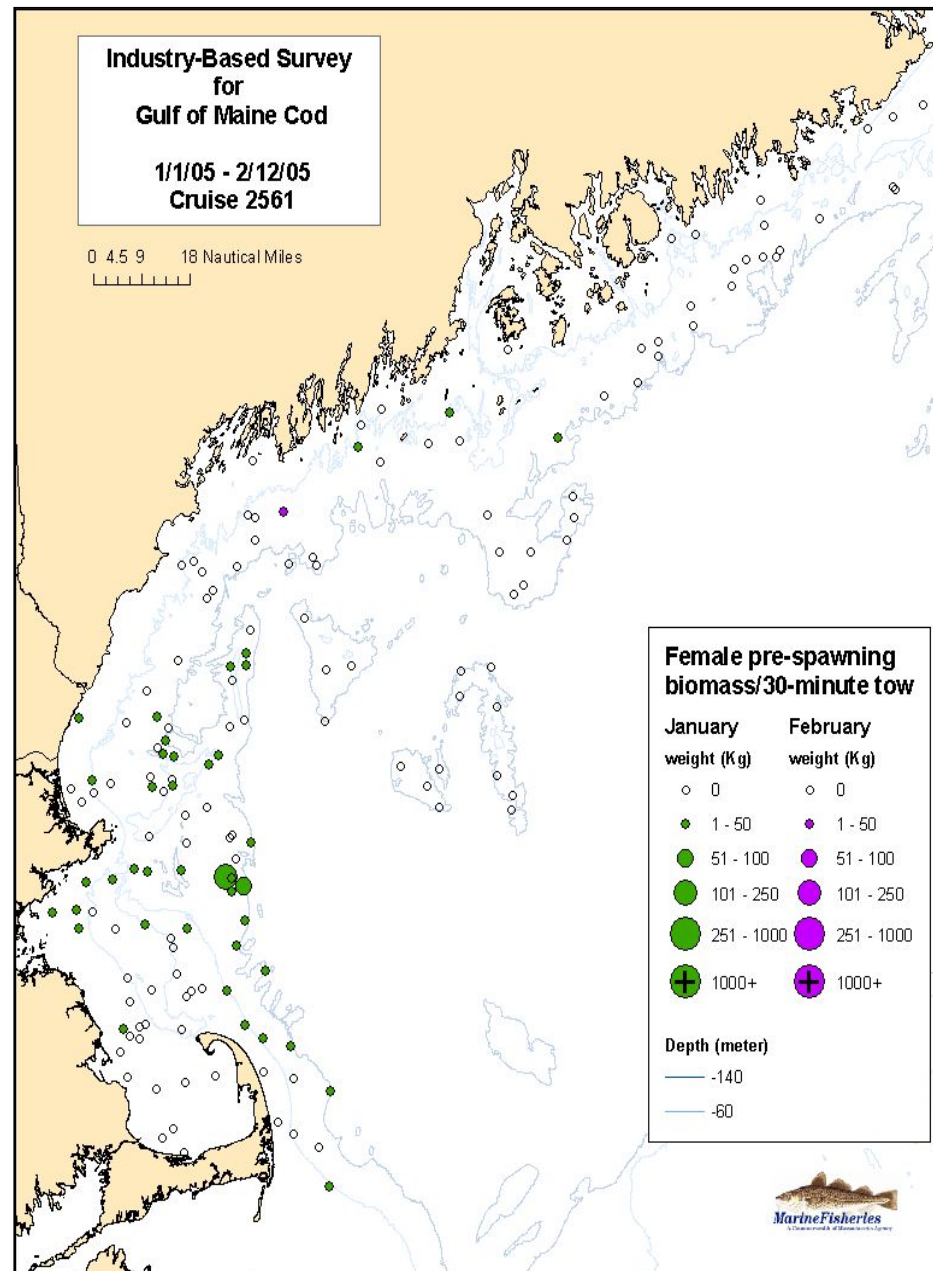
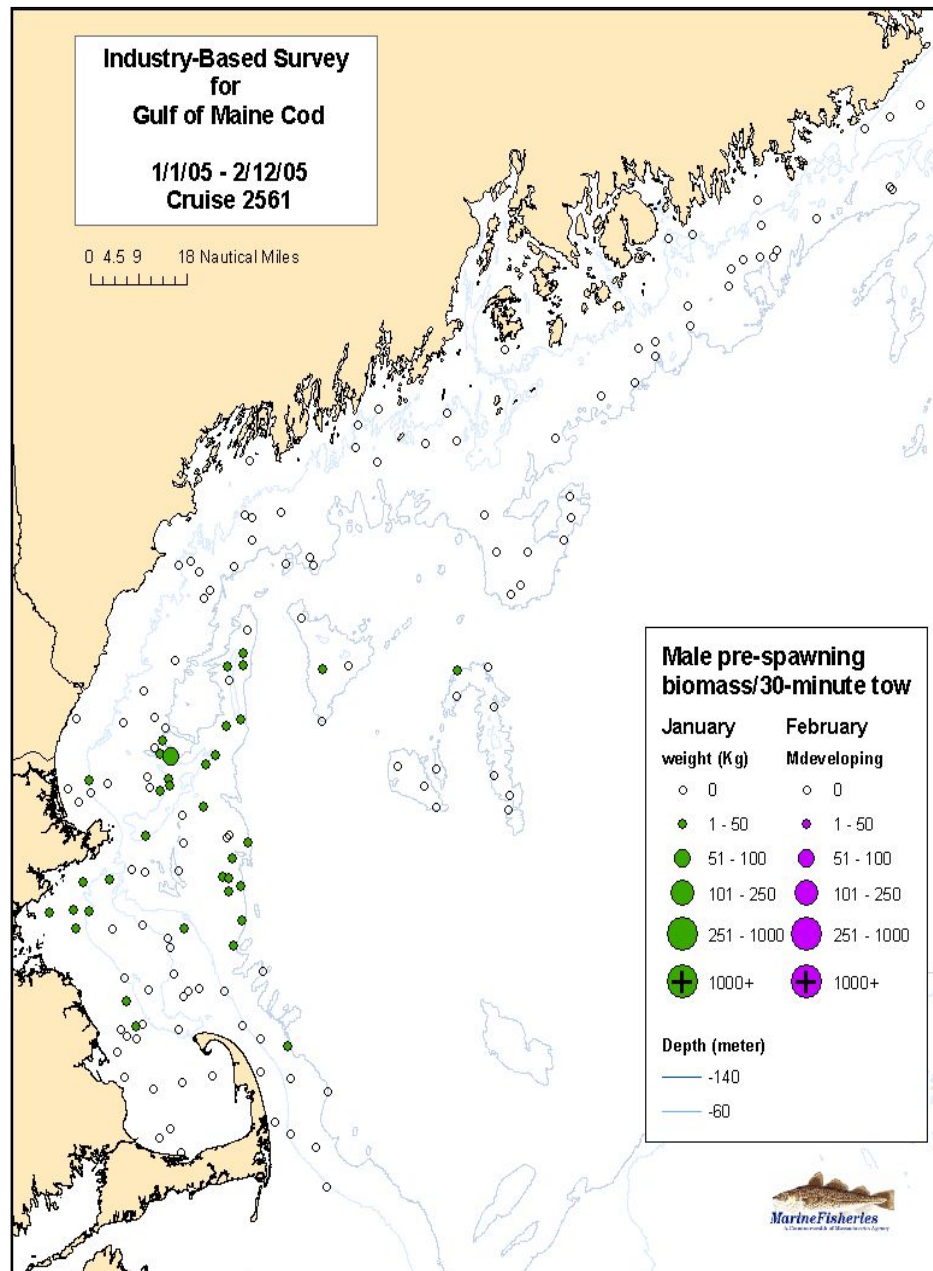
Estimated Biomass (kg) of Prespawning Males and Females

* Survey results during November rolling closure period. Weights standardized to 30 minutes in duration.



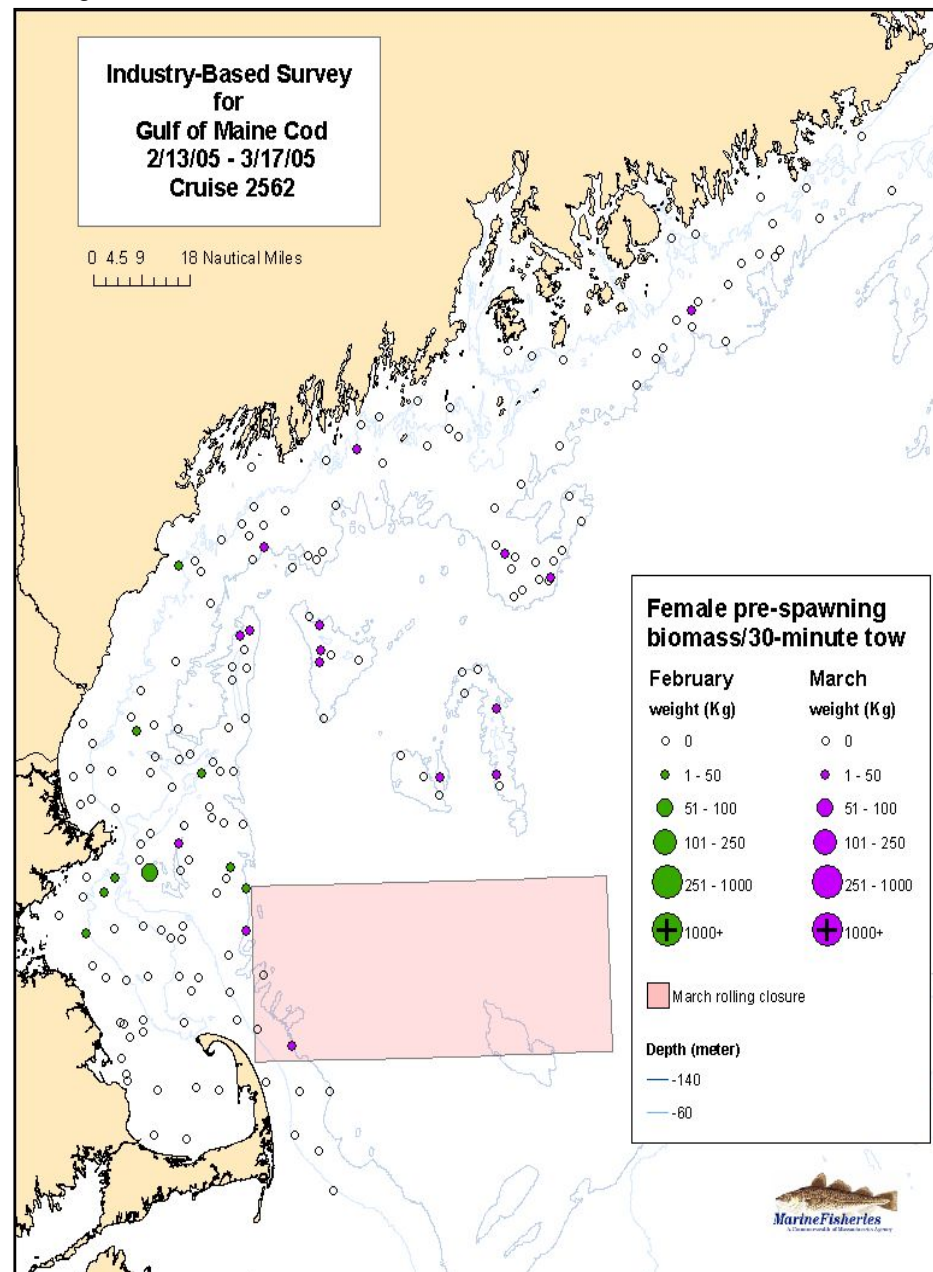
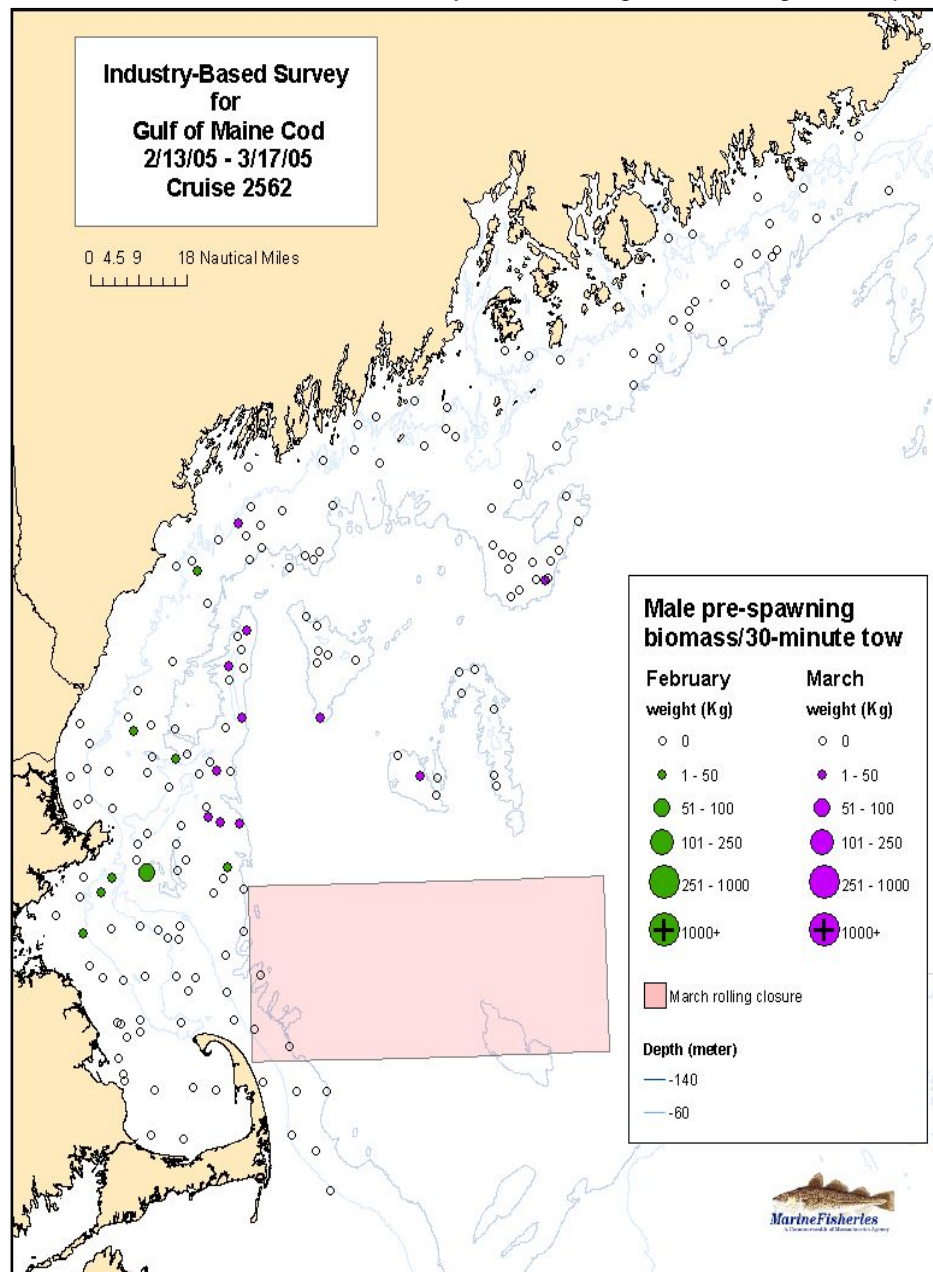
Estimated Biomass (kg) of Prespawning Males and Females

* Weights standardized to 30 minutes in duration.



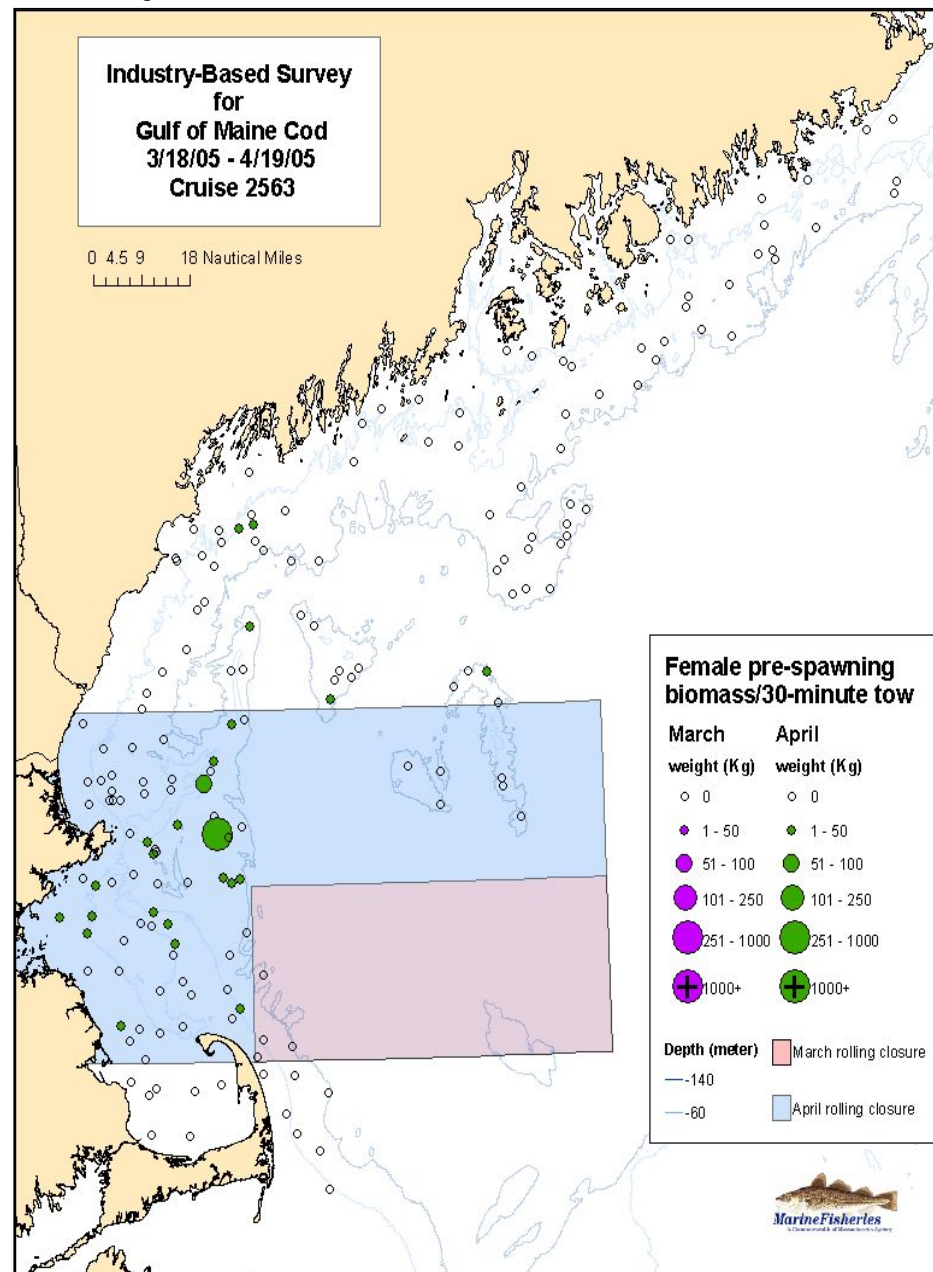
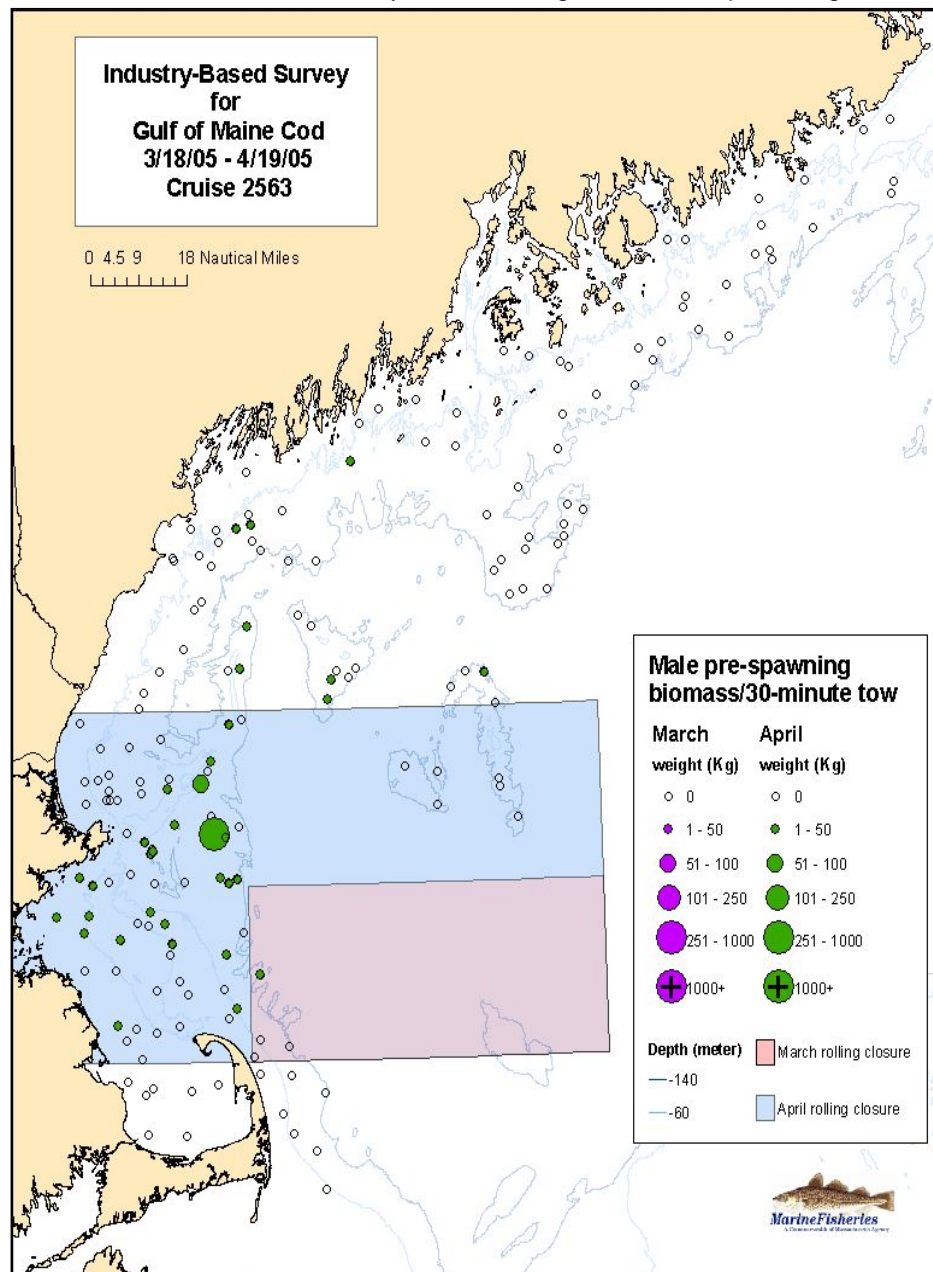
Estimated Biomass (kg) of Prespawning Males and Females

* Survey results during March rolling closure period. Weights standardized to 30 minutes in duration.



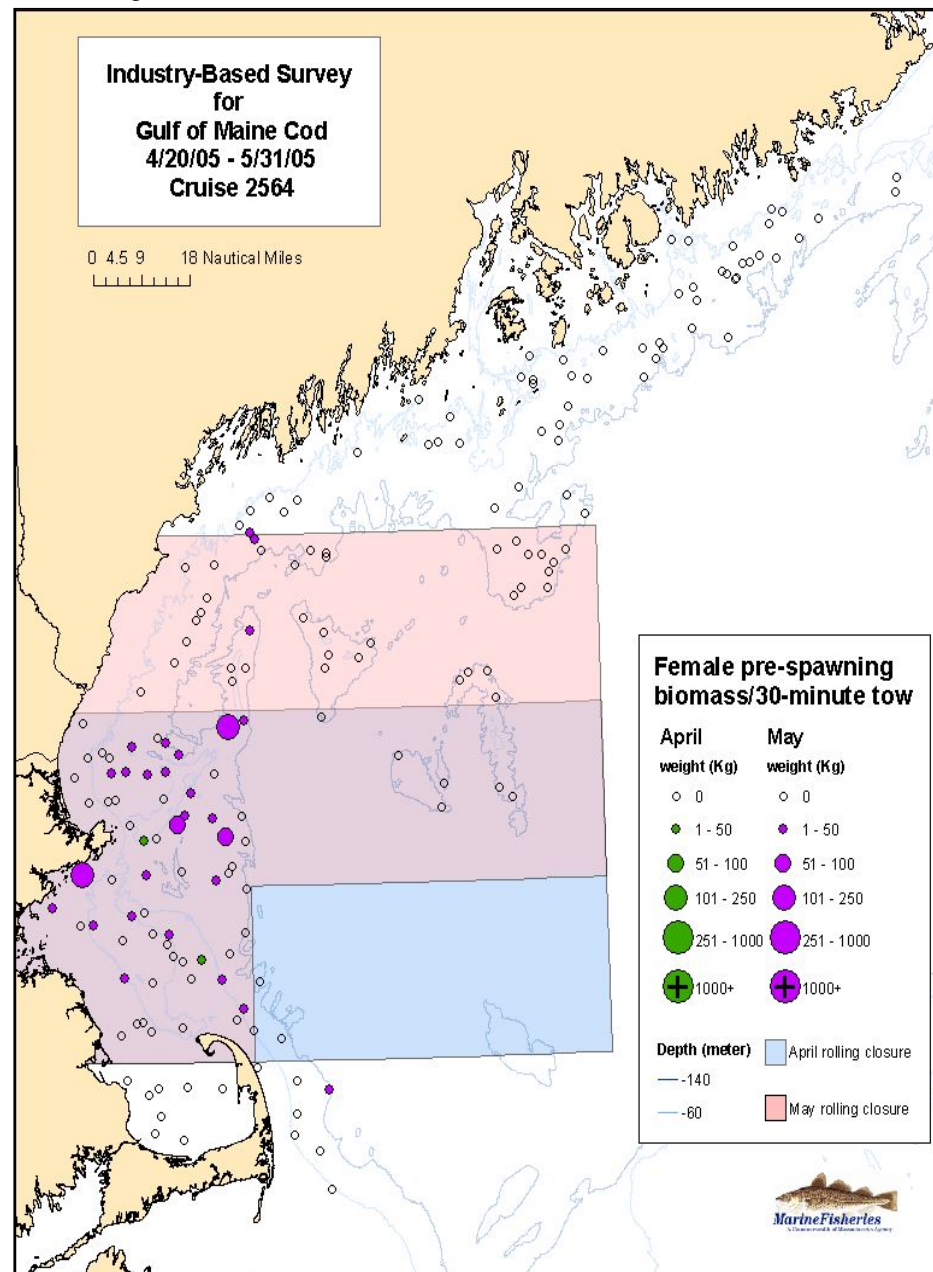
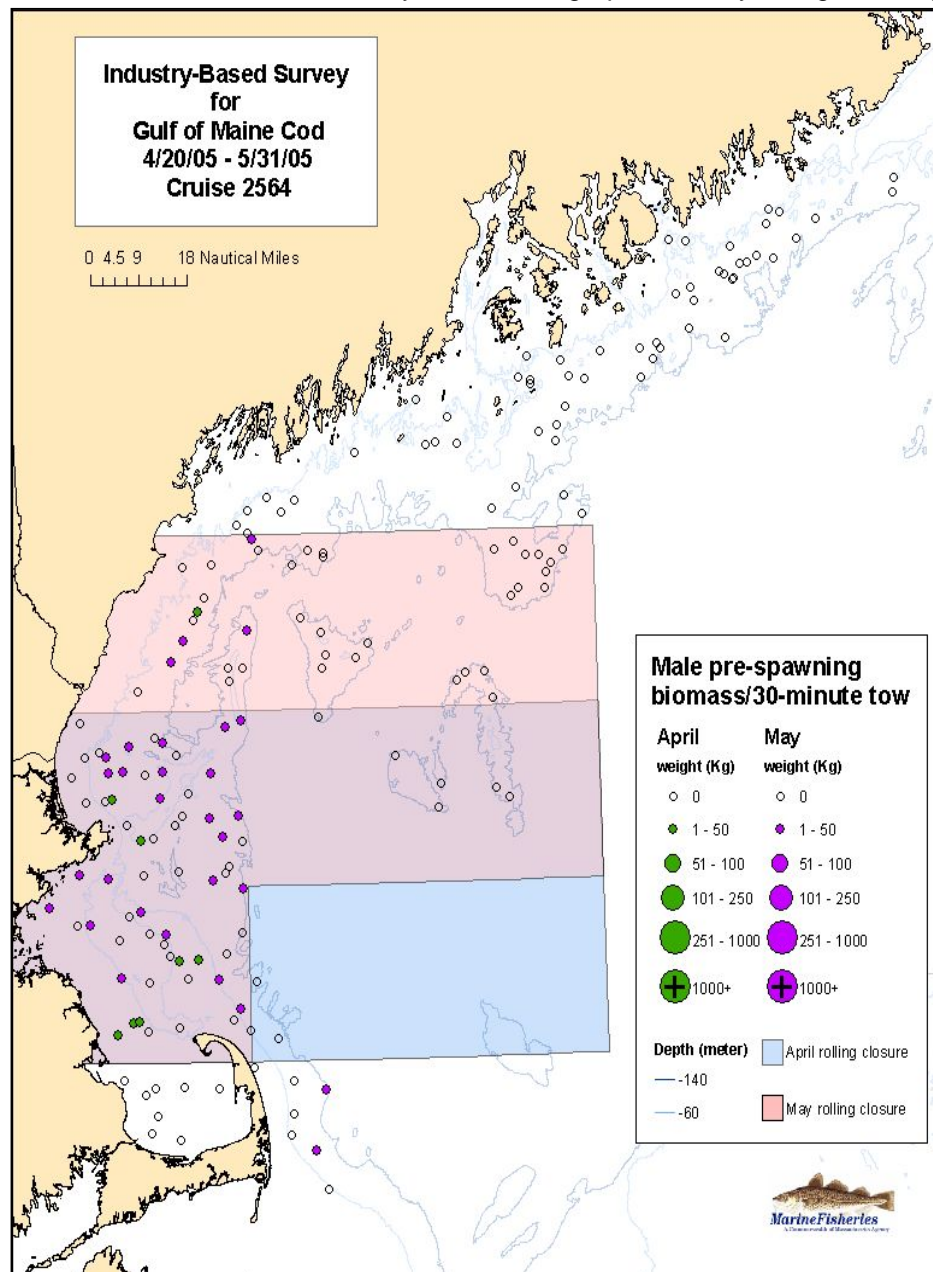
Estimated Biomass (kg) of Prespawning Males and Females

* Survey results during March and April rolling closure periods. Weights standardized to 30 minutes in duration.



Estimated Biomass (kg) of Prespawning Males and Females

* Survey results during April and May rolling closure periods. Weights standardized to 30 minutes in duration.



Industry-Based Survey for Gulf of Maine Cod

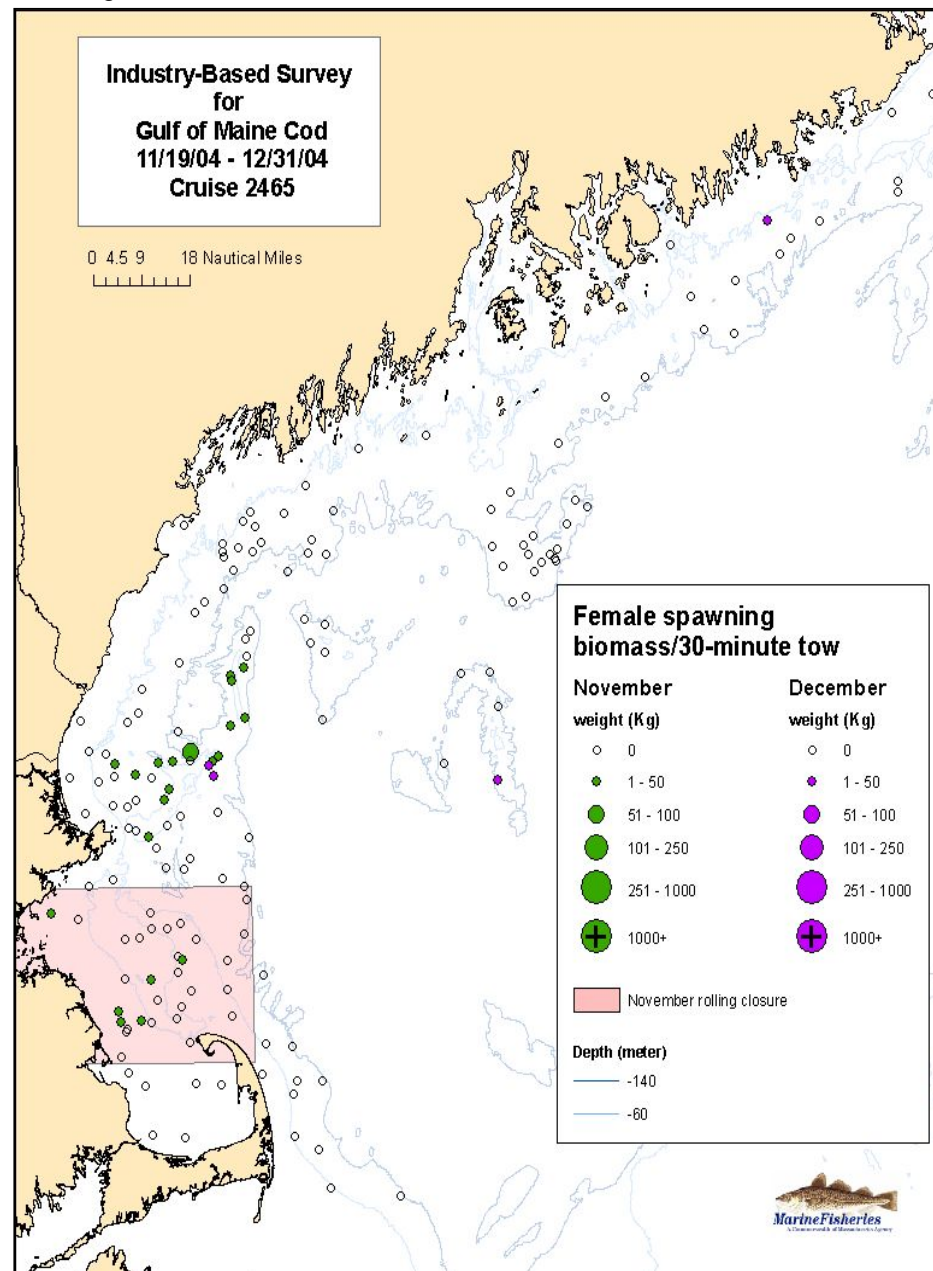
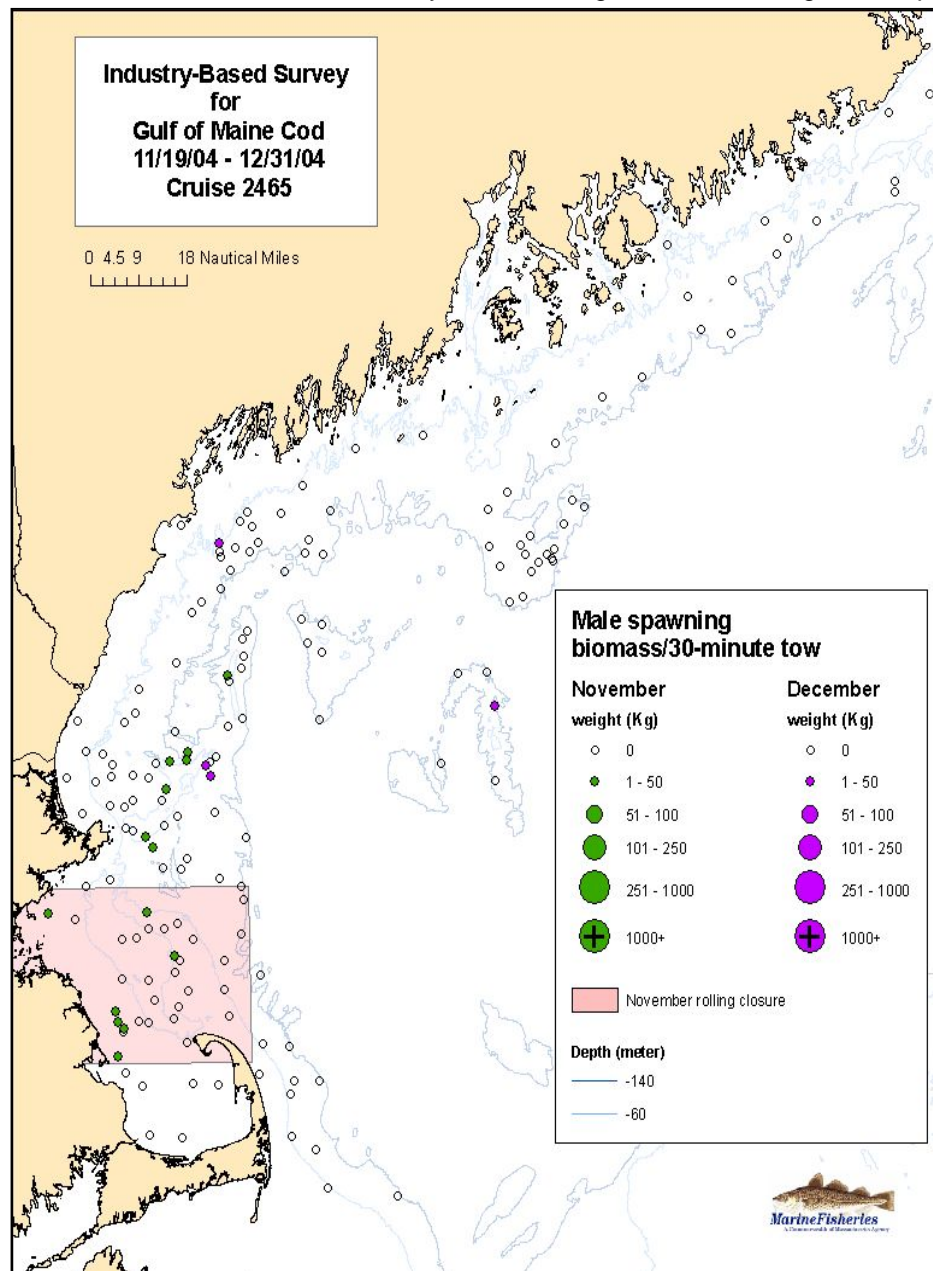
2004 - 2005 Survey Results

Atlantic Cod

Spatial and temporal distribution by sex of estimated spawning condition biomass (ripe, ripe & running and spent fish)

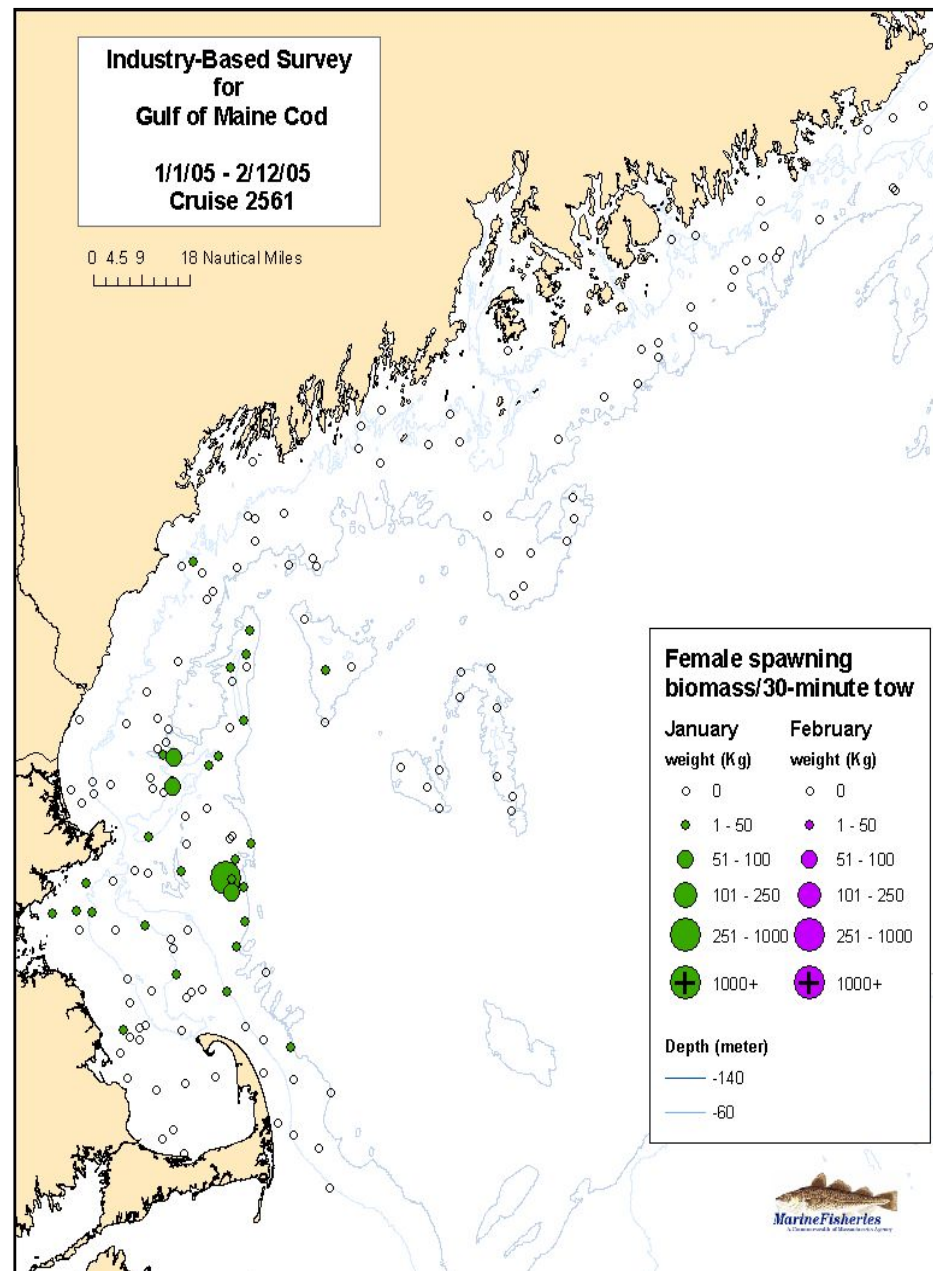
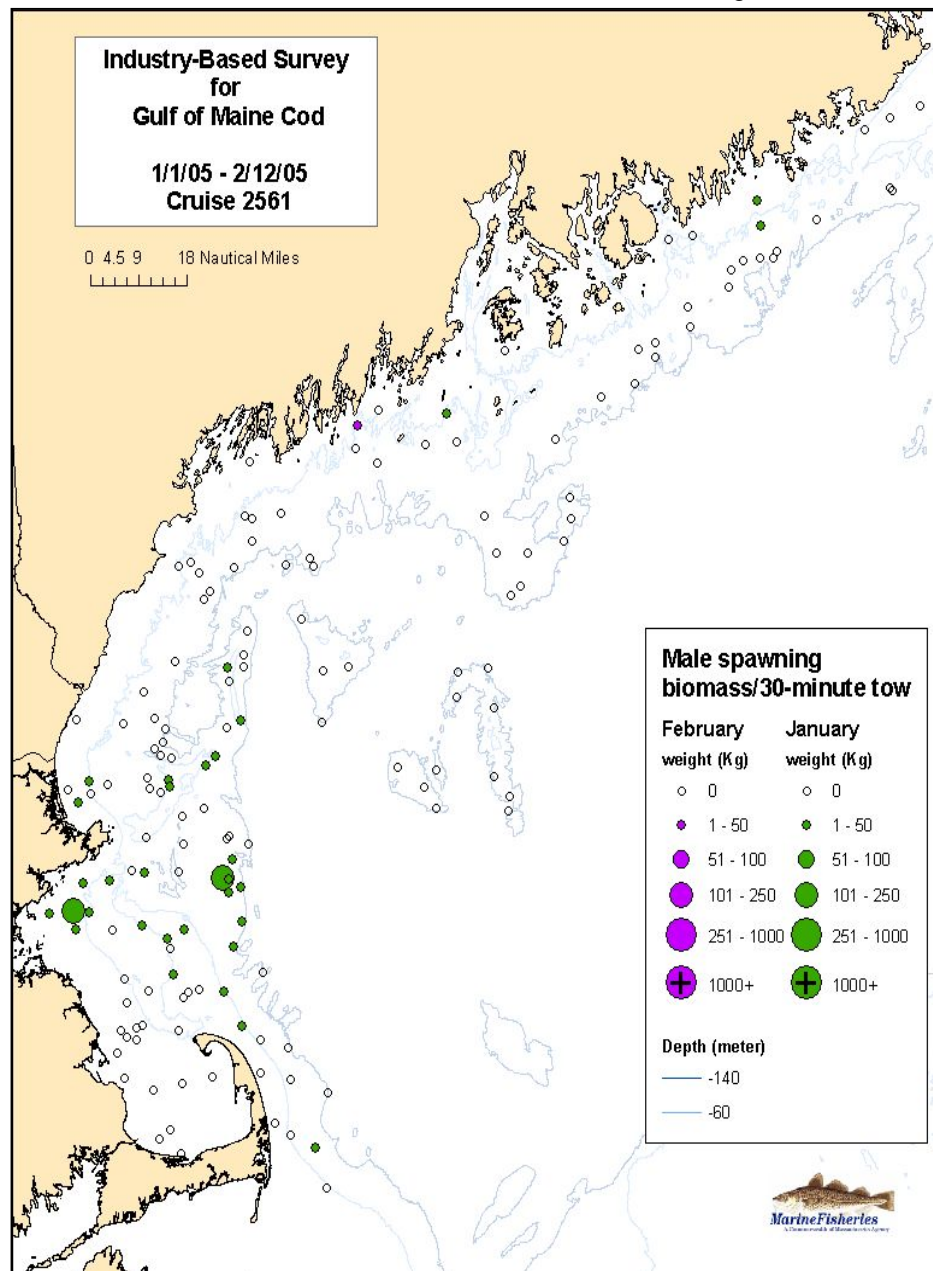
Estimated Biomass (kg) of Spawning Males and Females

* Survey results during November rolling closure period. Weights standardized to 30 minutes in duration.



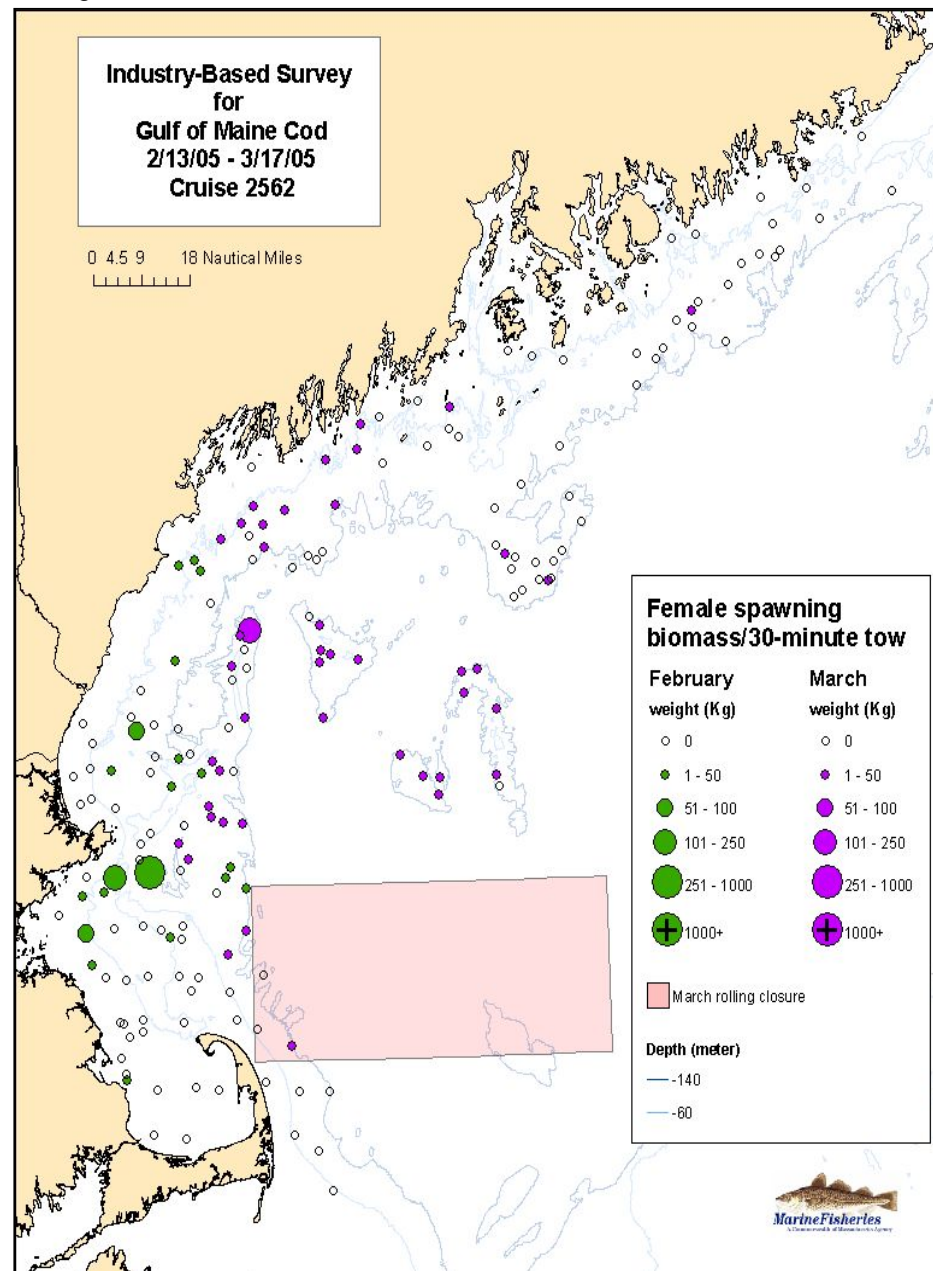
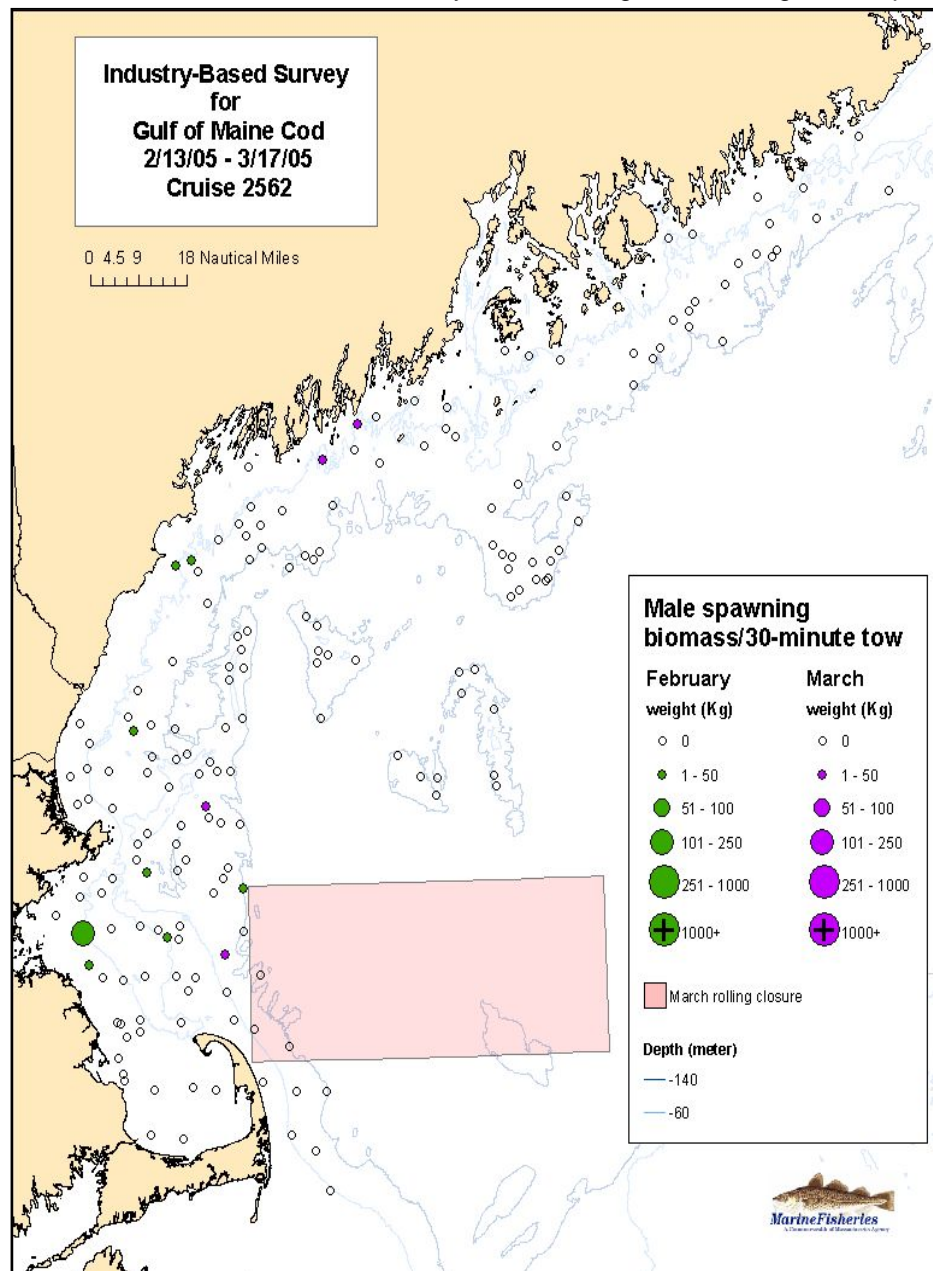
Estimated Biomass (kg) of Spawning Males and Females

* Weights standardized to 30 minutes in duration.



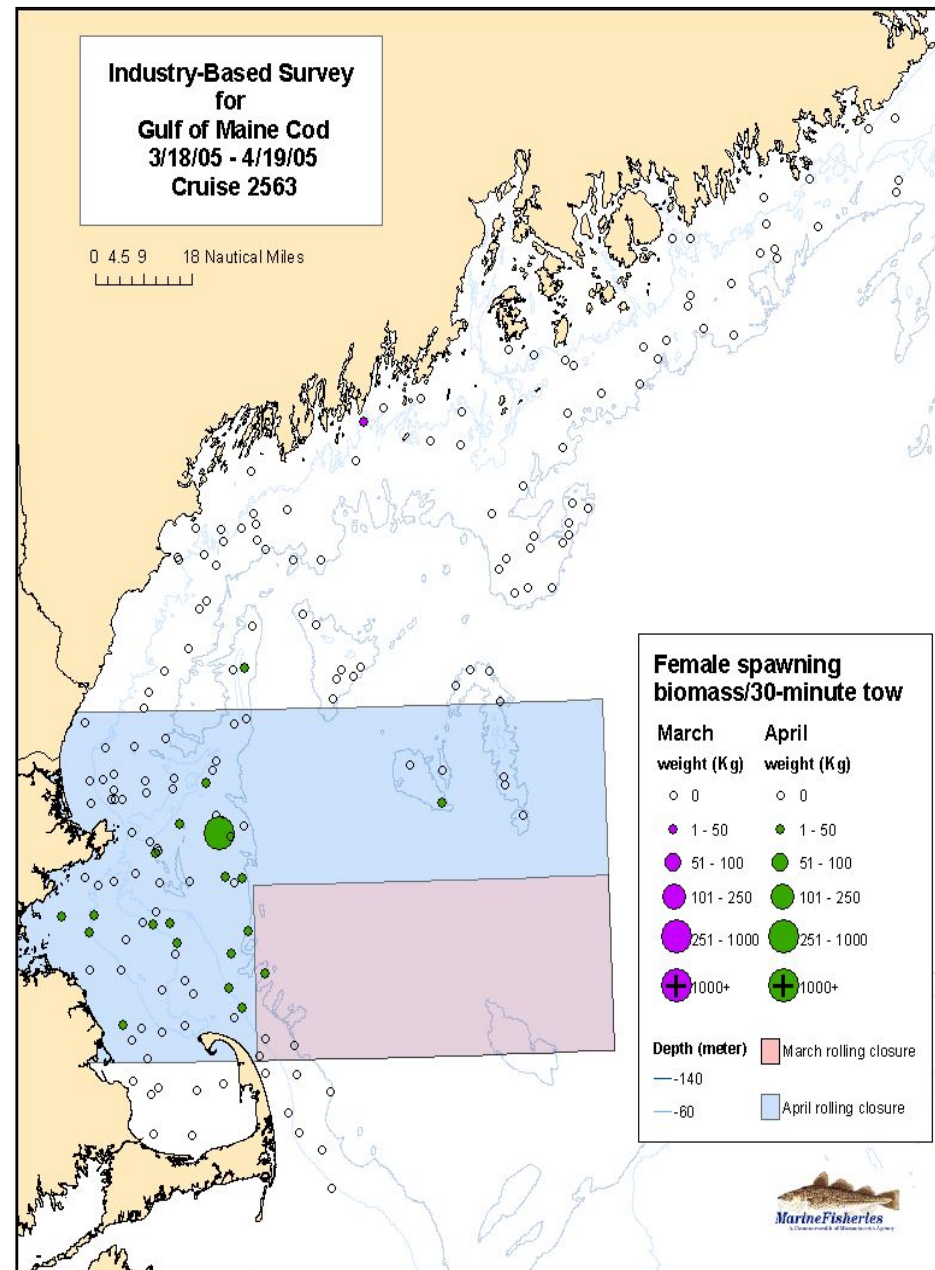
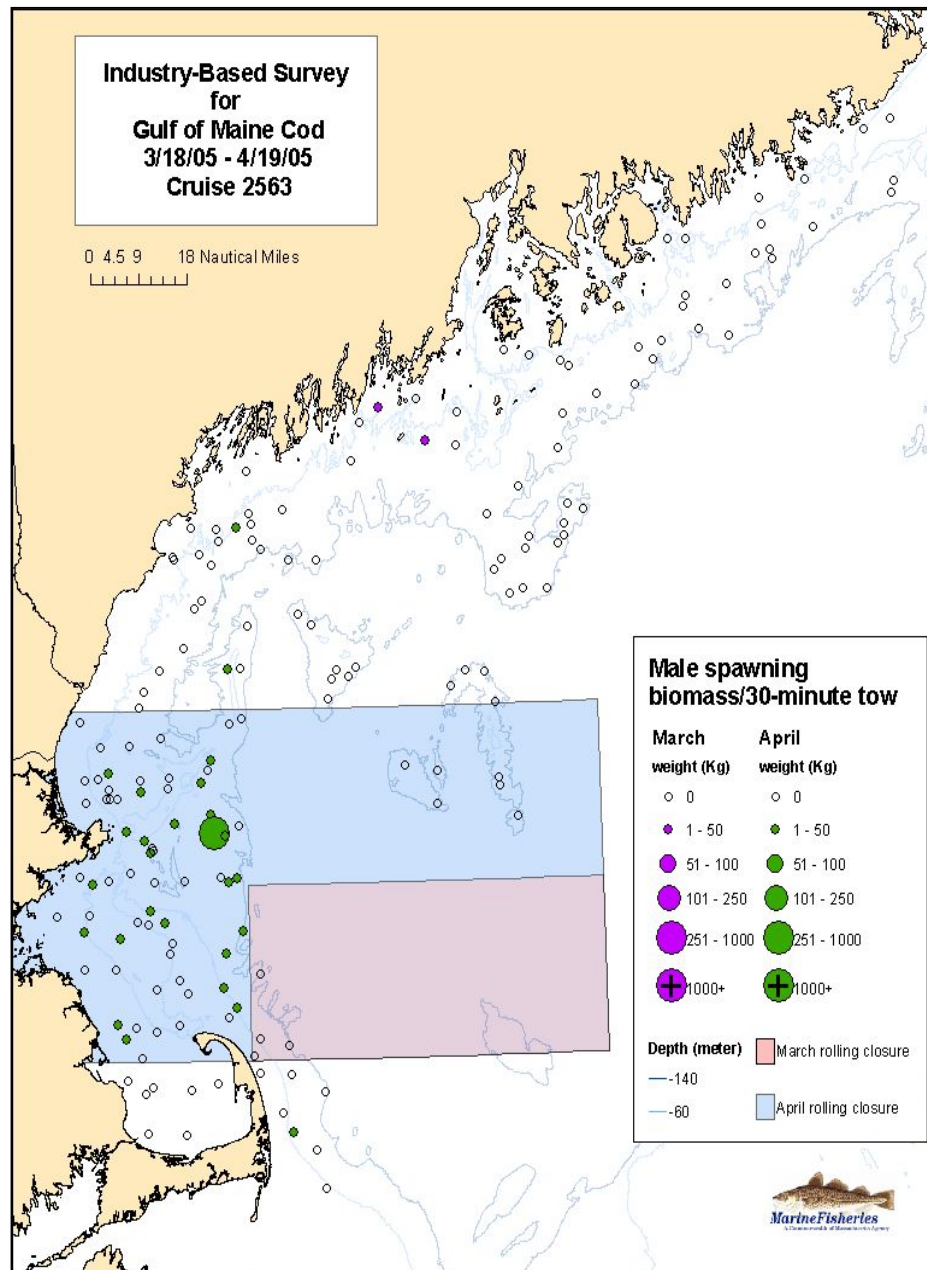
Estimated Biomass (kg) of Spawning Males and Females

* Survey results during March rolling closure period. Weights standardized to 30 minutes in duration.



Estimated Biomass (kg) of Spawning Males and Females

* Survey results during March and April rolling closure periods. Weights standardized to 30 minutes in duration.



Estimated Biomass (kg) of Spawning Males and Females

* Survey results during April and May rolling closure periods. Weights standardized to 30 minutes in duration.

