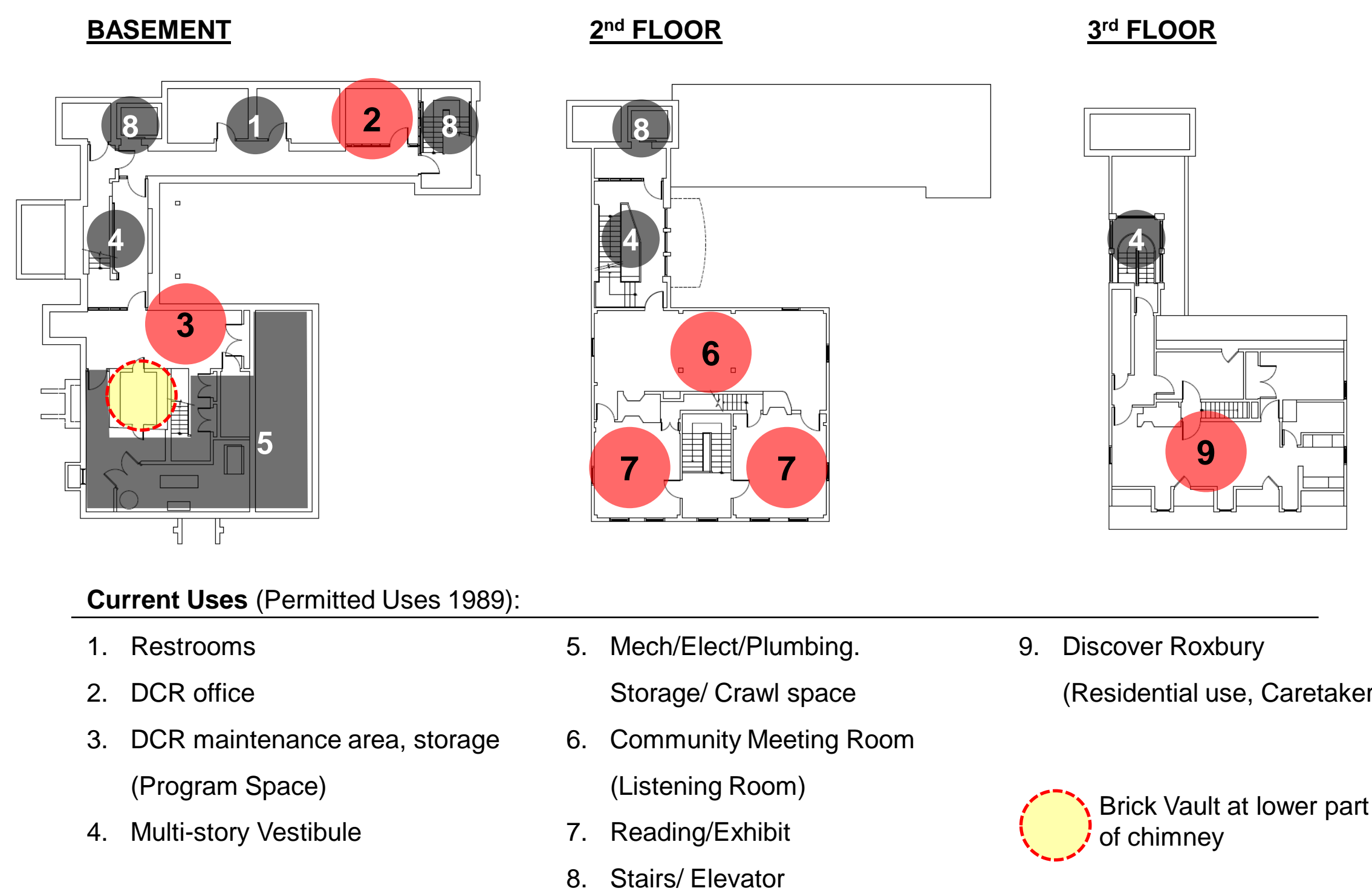


## GOALS & OPPORTUNITIES

- Linking the historic house and its location to the history of Roxbury, the land and surrounding landmarks. The house is an exhibit.
- Creating an Entryway that is easy to identify and is part of the visitors' experience to the RHSP.
- Integrate the house, physically and programmatically, to the landscape and outdoor programs.
- Combine public uses and DCR uses in a harmonious and flexible manner.
- Building repairs and upgrades would further attract area residents and visitors.

## CONSTRAINTS

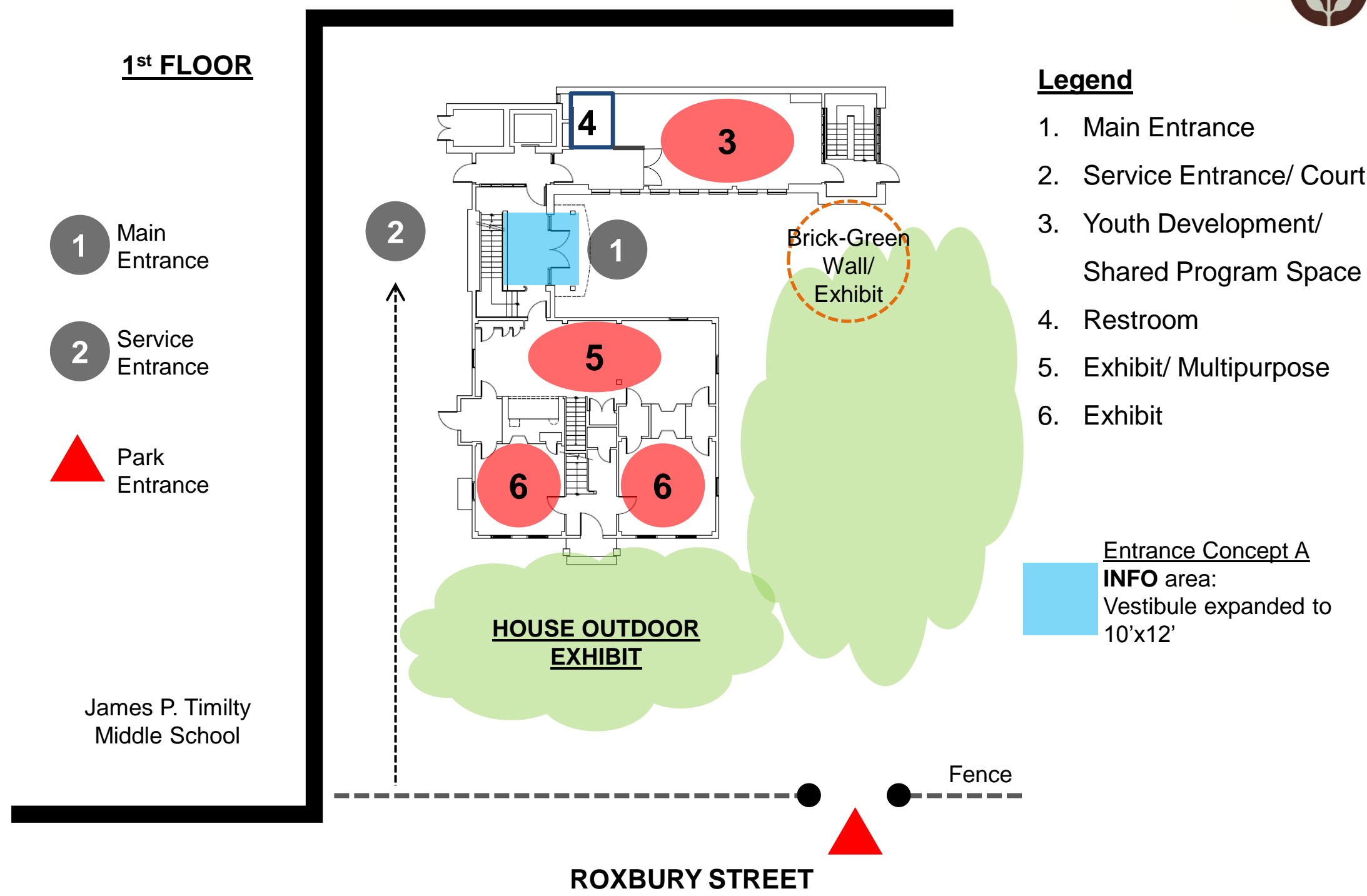
- Modifications to the historic house are limited given the historic status of the house, the original residential use and age of the structure.
- There are limitations to the level of improvements that could be made to the Historic house building envelope, doors and windows.



## Existing Conditions

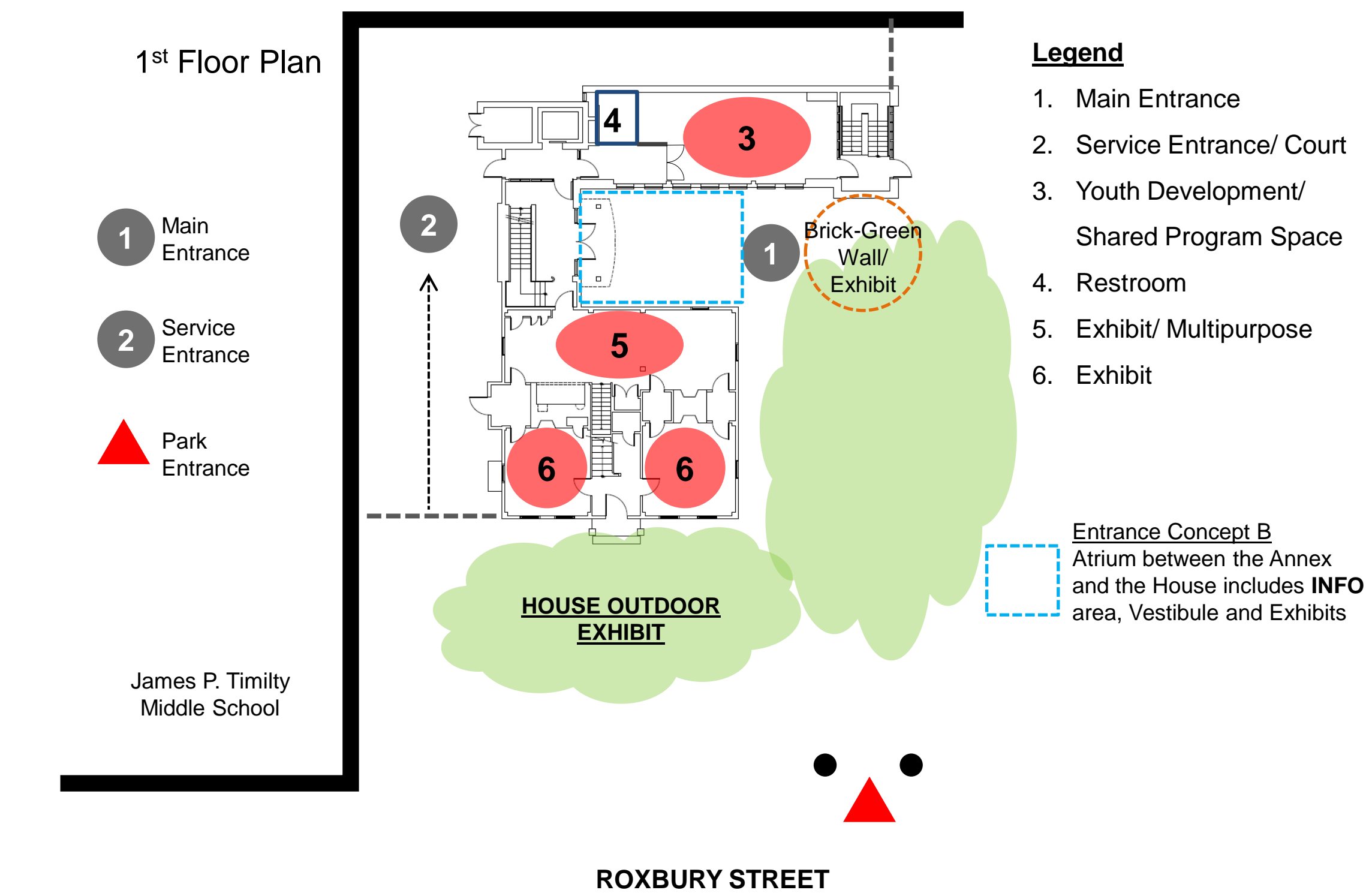
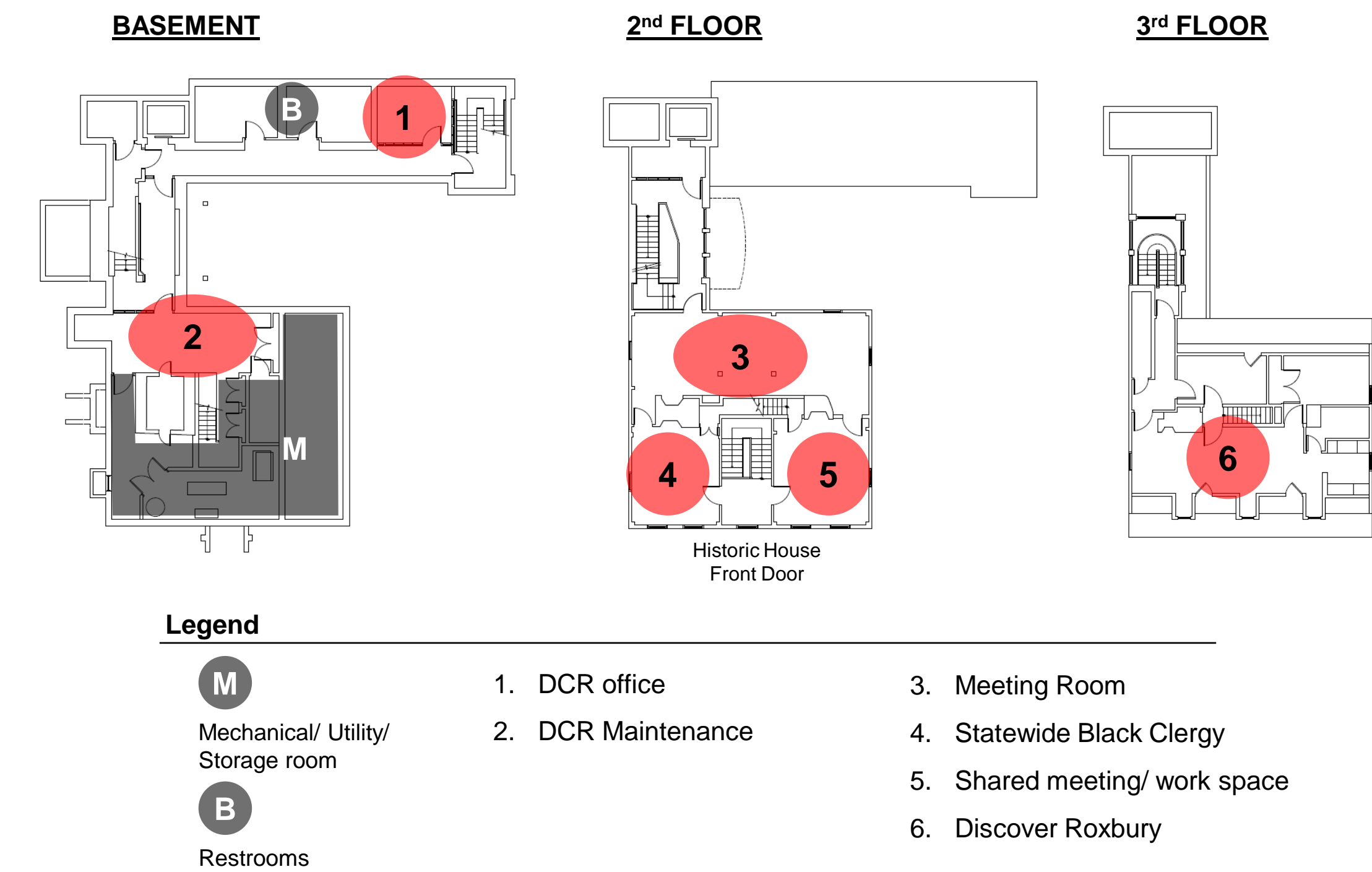
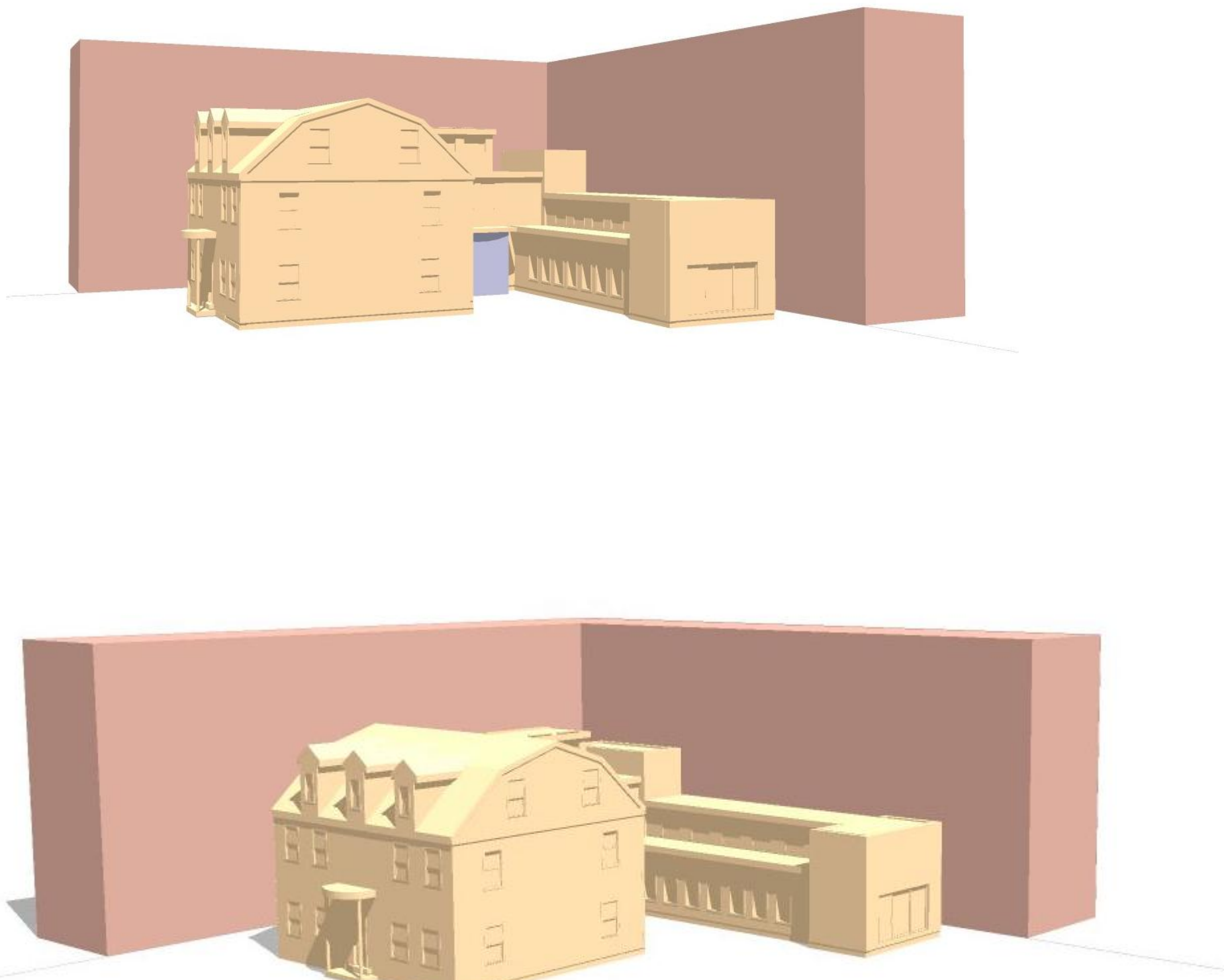






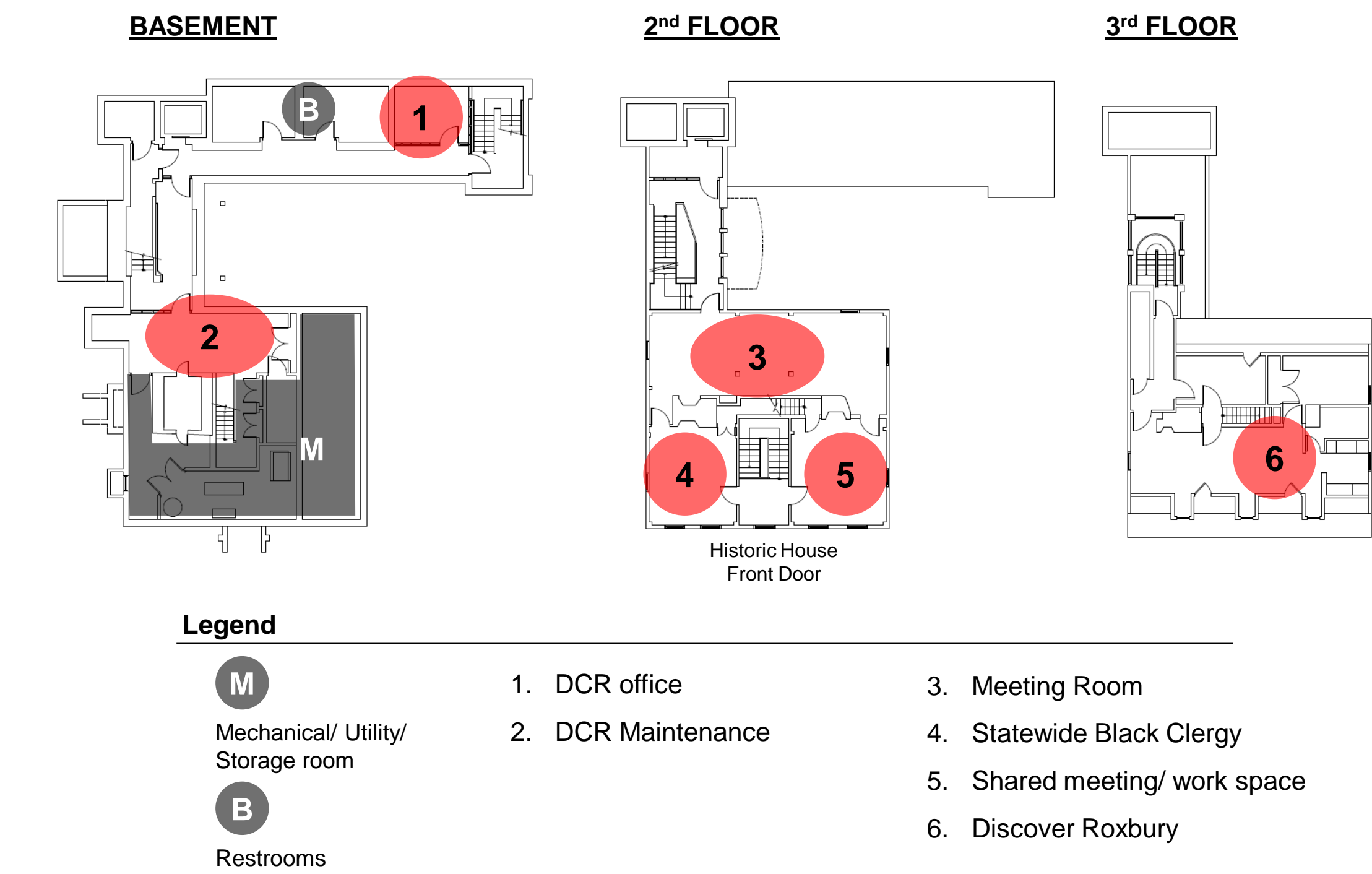
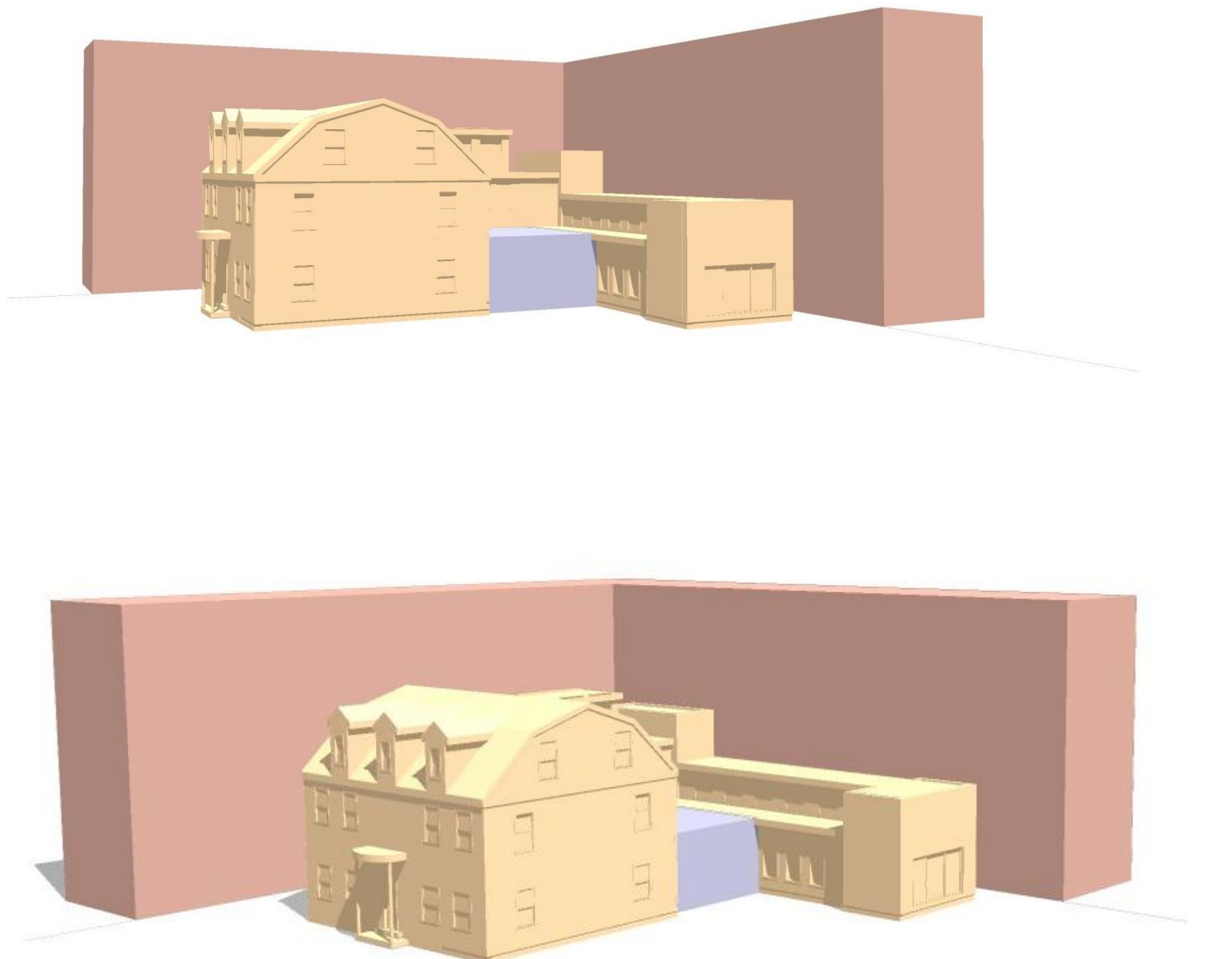
**Design Features A**

- Incorporate brick-green wall by the Annex to the building entrance experience
- Expanded glass vestibule creates new Building Entrance
- Lower fence at existing location
- 1<sup>st</sup> floor is primarily for public use and 2<sup>nd</sup> floor is semi-public
- Limited public access to the basement and 3<sup>rd</sup> floor
- New Restroom: 1<sup>st</sup> Floor Annex

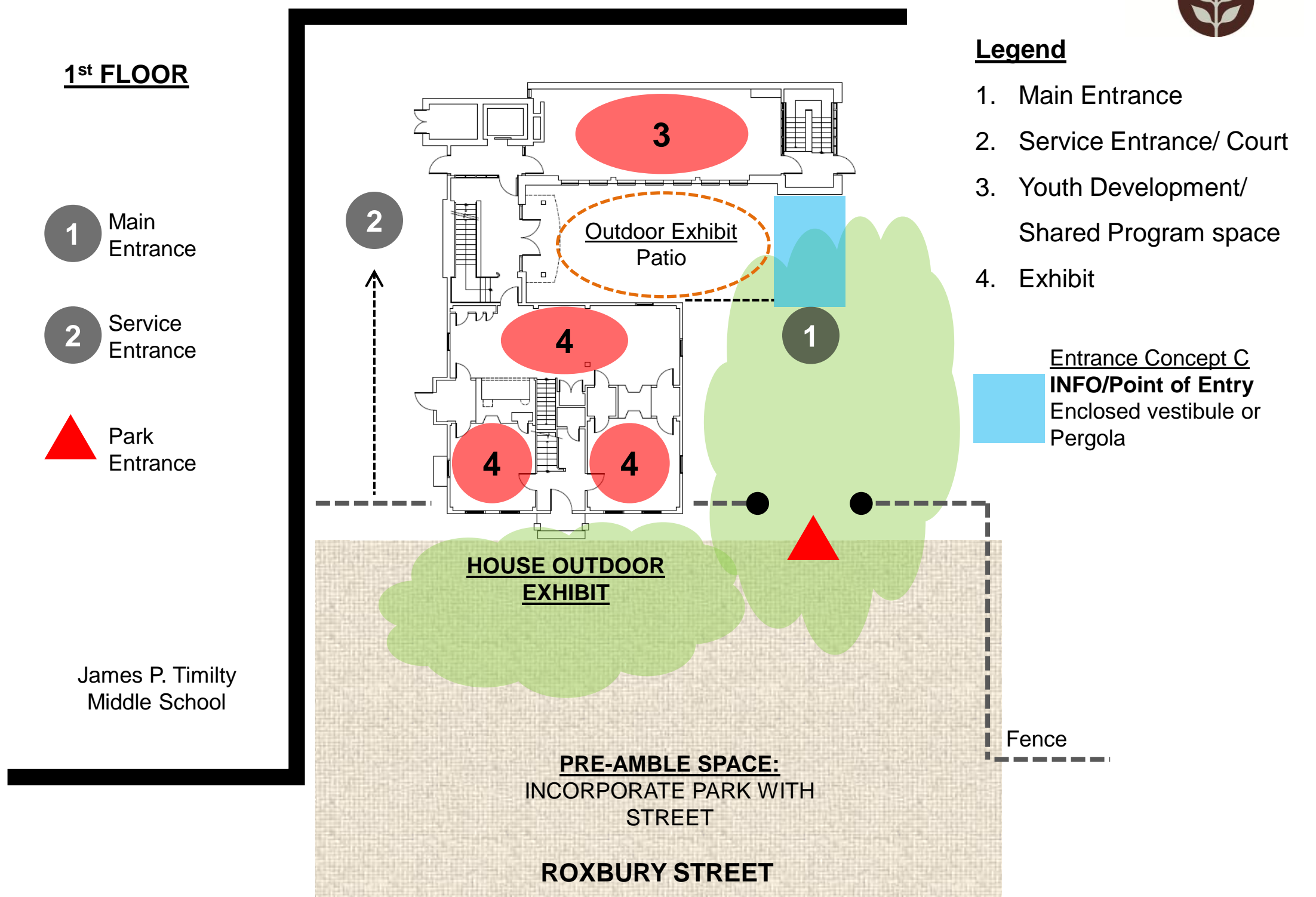


**Design Features B**

- Incorporate brick-green wall by the Annex to the building entrance experience
- Atrium between the Historic House and the Annex creates Building Entrance and additional area for exhibits
- Security Fence at building edges only. Ornamental fence along the park edges
- 1<sup>st</sup> floor is primarily for public use and 2<sup>nd</sup> floor is semi-public
- Limited public access to the basement and 3<sup>rd</sup> floor
- New Restroom: 1<sup>st</sup> Floor Annex

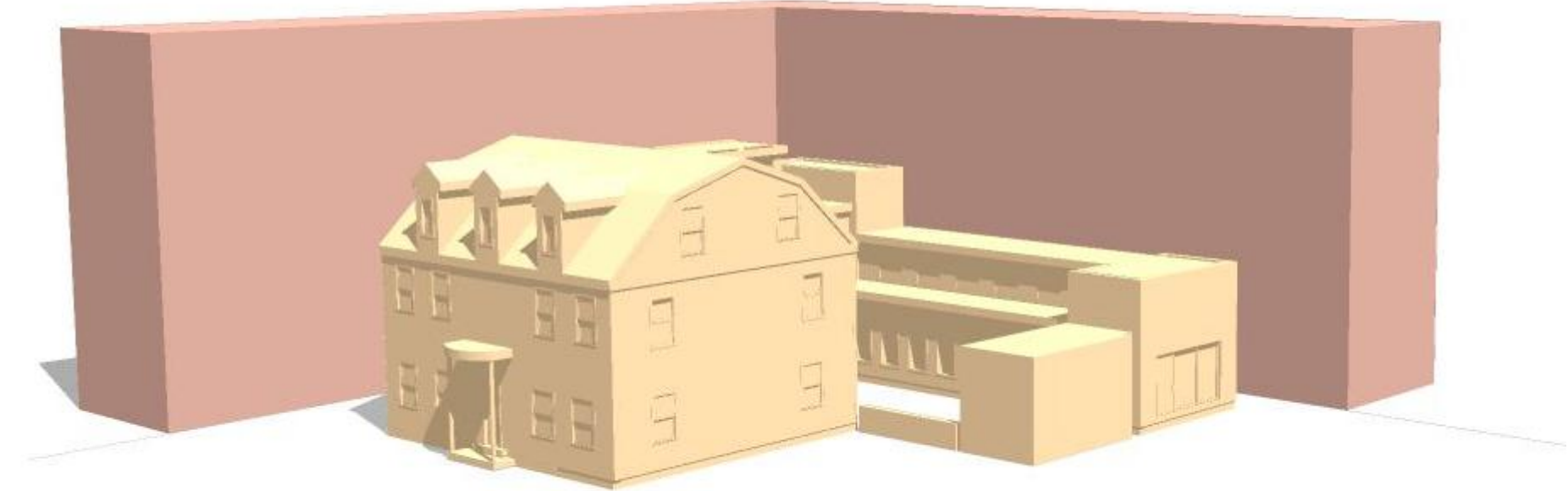
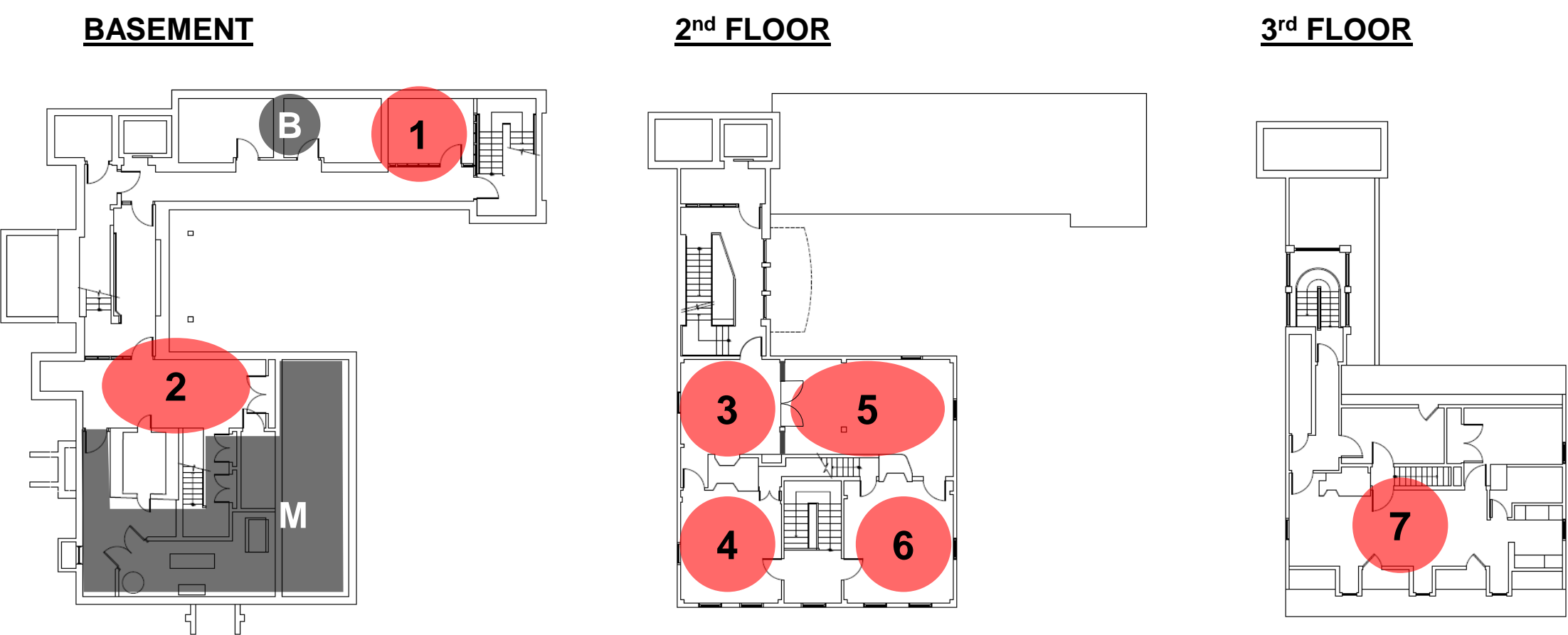
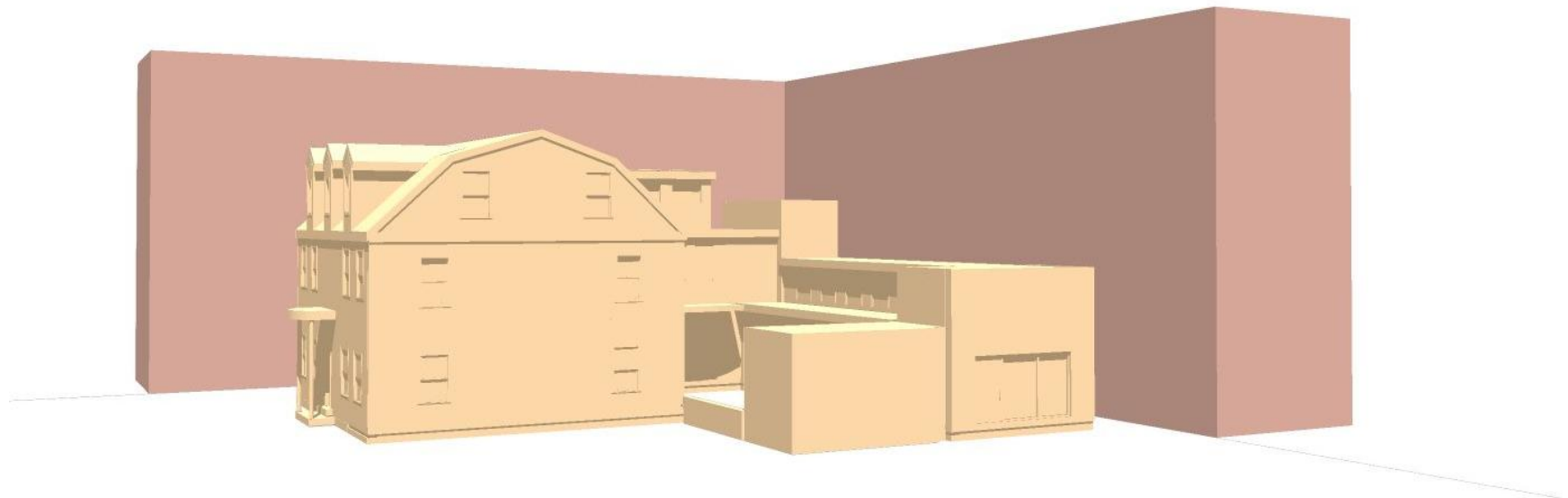






**Design Features C**

- a. The House is incorporated to Roxbury Street by a gathering area at the front.
- b. New Point of Entry is visible from the park and the street
- c. 1<sup>st</sup> floor is primarily for public use and 2<sup>nd</sup> floor is semi-public
- d. Limited public access to the basement and 3<sup>rd</sup> floor



- Legend**
- M Mechanical/ Utility/ Storage room
  - B Restrooms
  - 1. DCR Office
  - 2. DCR Maintenance
  - 3. Circulation space
  - 4. Statewide Black Clergy
  - 5. Multipurpose Room/ Community Gallery
  - 6. Reading Room
  - 7. Discover Roxbury

**YOUR COMMENTS:**