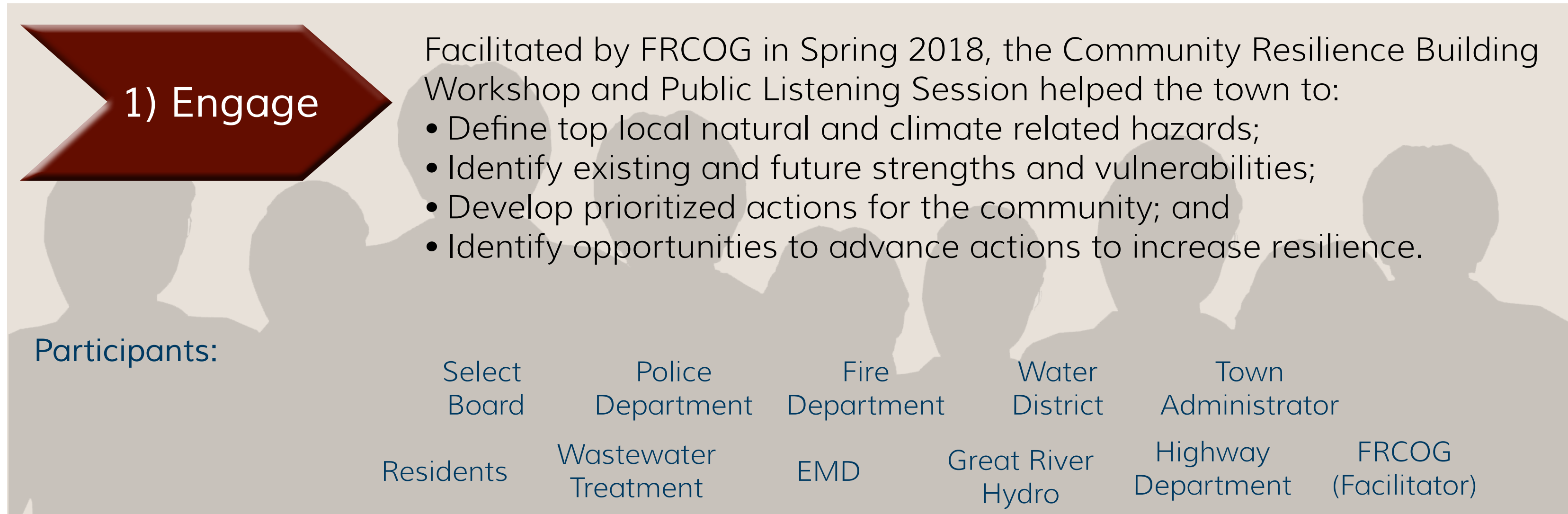
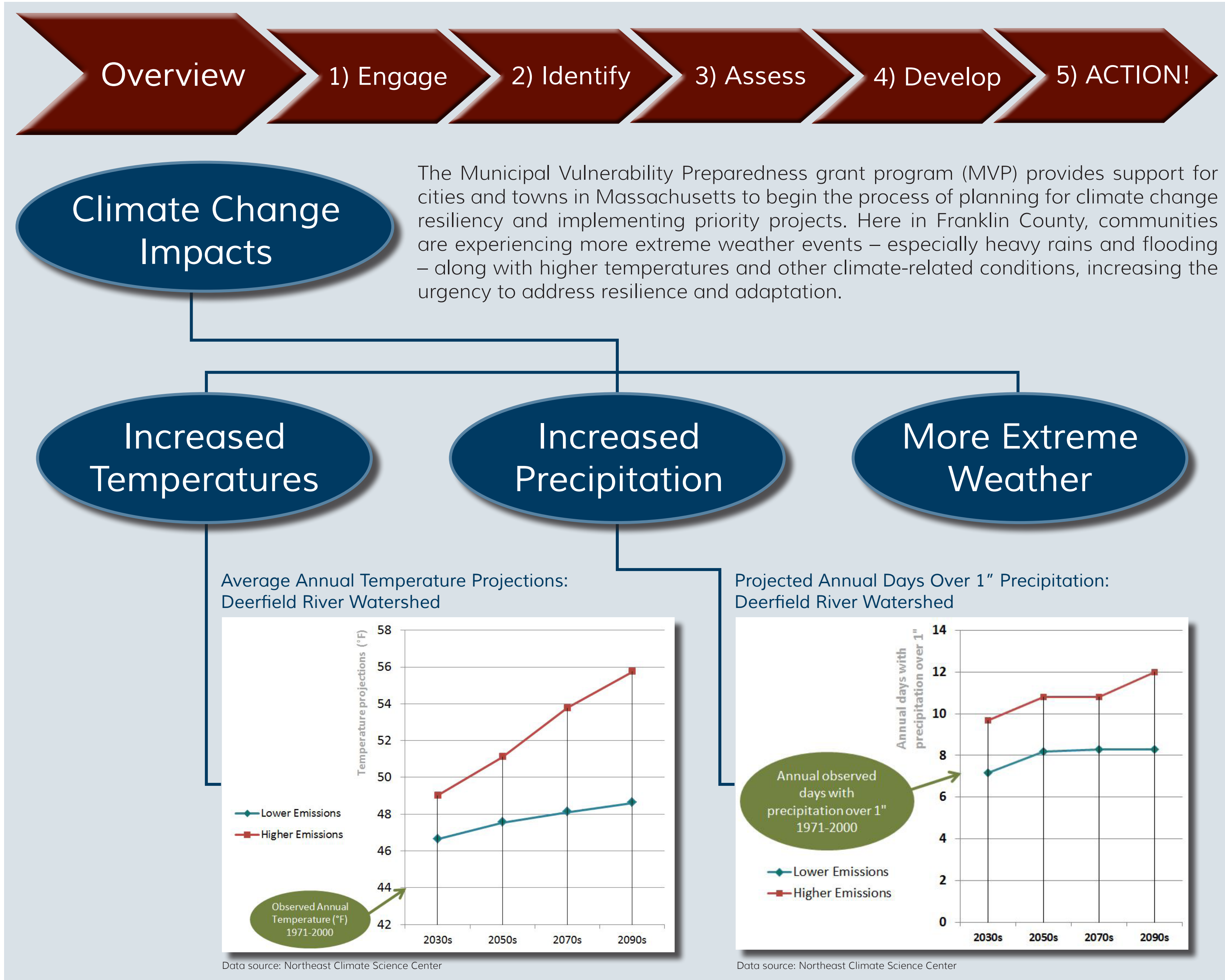


Municipal Vulnerability Preparedness (MVP) Program

2018 Town of Buckland Report Summary

Facilitated by the
Franklin Regional Council of Governments
A State-Certified MVP Provider



Fire and Police Stations and Town Hall are located close to the river; Bridge on Apple Valley Road is in need of repair; Culverts on South Street, Nilman Road, Elm Street, and Charlemont Road need repair; Gravel roads in town vulnerable to wash-outs; Public water supply crosses the Deerfield River on the Bridge of Flowers.



Residents near the Elm Street rail crossing could be cut off in the event of a derailment or other railroad issue which would necessitate residents' evacuation; Low-income residents in downtown area may have limited options for sheltering should they have to evacuate; Some areas of Town might become cut off in the event of flooding or road closures; Pockets of residents are without land lines and in areas with poor or no cell



The Buckland Recreation Area and the river banks along Clesson Brook have been subject to erosion since Tropical Storm Irene, which now threatens the access road, parking lot, pool and pool house; Valuable farmland along Clesson Brook is vulnerable to soil erosion.

Municipal Vulnerability Preparedness (MVP) Program

2018 Town of Buckland Report Summary


3) Assess

Buckland has a number of strengths and assets, as identified by workshop participants. These include strong social, physical, and environmental infrastructure that increases the resilience of the community in the face of climate change.


Buckland's Top Strengths




Breakdown of Buckland's Top Strengths:



There are few dead end roads in town, so residents have alternatives in the event of road closures or wash outs. A second Fire Station in Upper Buckland means equipment and vehicles can be brought there if the other facilities are threatened by floodwaters.



Buckland is a close-knit community where most people know each other and look out for one another. Residents are self-sufficient and are used to dealing with whatever nature brings. Town Hall serves as an accessible, daytime heating and cooling center and is equipped with a generator and a kitchen.

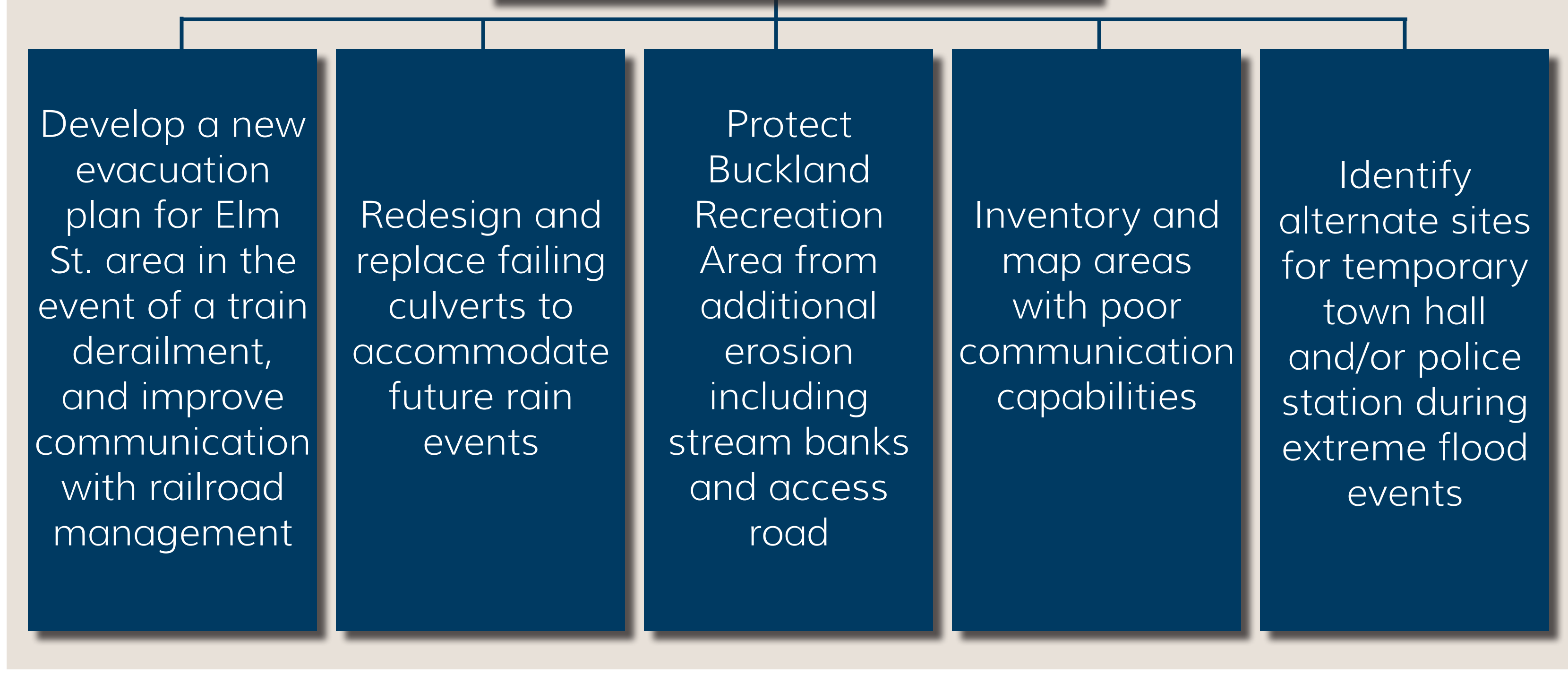


The wastewater treatment facility is well protected by the topography of the land and has stand-by power. The sewer line, located on the downstream side of the Iron Bridge, is also well protected.

4) Develop

Infrastructure and facilities were common themes in many of the recommendations to emerge from the workshop, all aimed at increasing resilience and reducing vulnerability to the impacts of climate change. The top five highest priorities are shown below.

Buckland's Highest Priority Recommendations



5) ACTION!

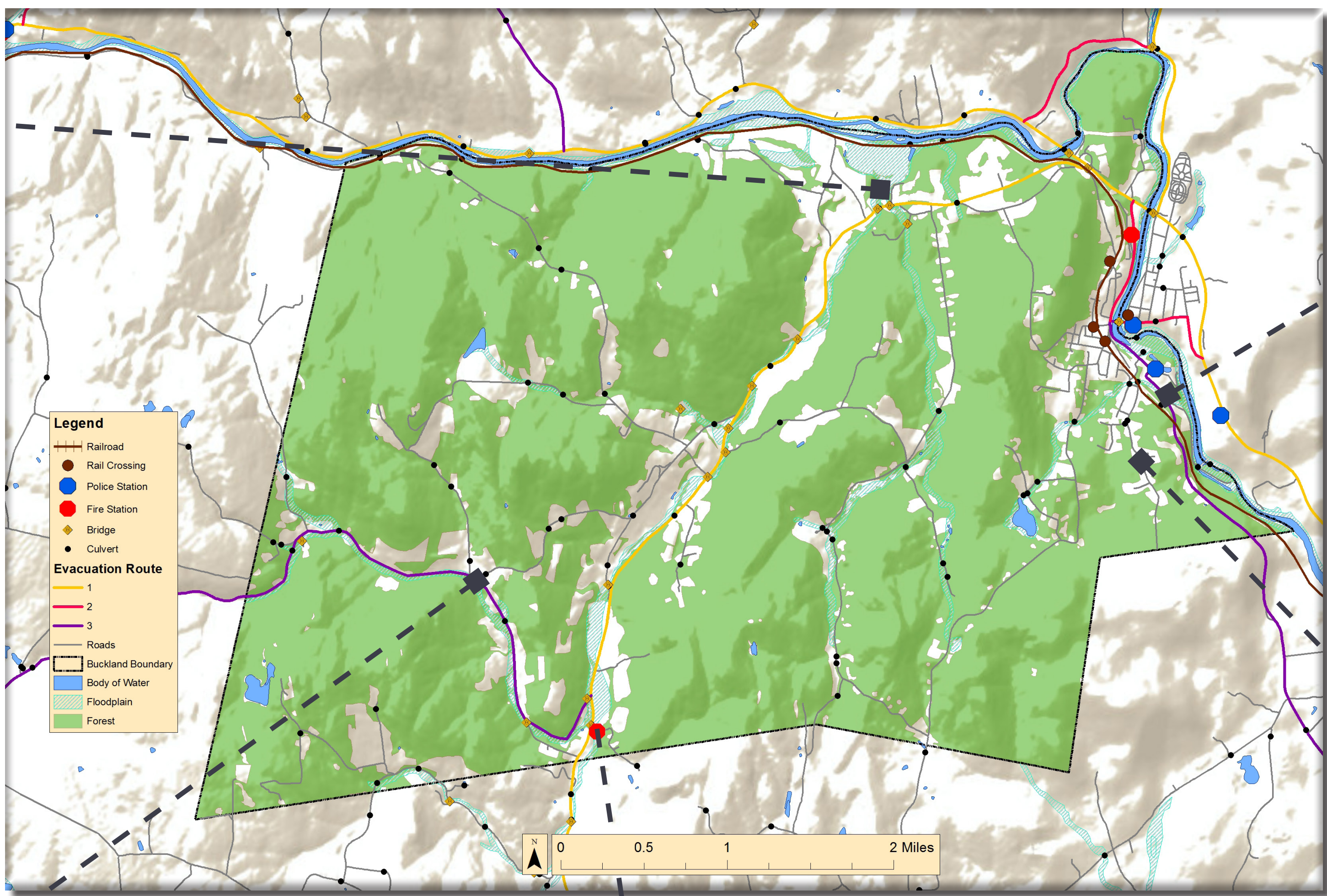
- ☐ Integrate MVP findings into Hazard Mitigation Plan and Open Space and Recreation Plan updates.
 - ☒ Endorse MVP Plan to become an MVP Community
 - ☐ Apply for MVP Action Grants
- Eligible Projects include:
- Vulnerability and Risk Assessment
 - Education and Communication
 - Local Bylaws and Ordinances
 - Redesigns and Retrofits
 - Nature-Based Solutions
 - Ecological Restoration and Habitat Management

Municipal Vulnerability Preparedness (MVP) Program

2018 Town of Buckland Report Map



The Buckland Recreation Area and the river banks along Clesson Brook have been subject to erosion since Tropical Storm Irene, which now threatens the access road, parking lot, pool and pool house. A top priority is to protect Buckland Recreation Area from additional erosion through the restoration of the stream banks and the access road.



Shown here in 2005, the South Street culvert, among others, is in need of repair. Extreme weather events can erode and damage culverts leading to flooding and unstable roadways.



Shown here in 2012, Clesson Brook sustained significant erosion from Tropical Storm Irene. The riverbed was reconstructed in several places to increase stability.



A second Fire Station allows for equipment and vehicles to be moved here if the other facilities are threatened by floodwaters. Redundancy of emergency services increases resilience to disasters.



The Elm Street neighborhood, highlighted here, could be cut off in the event of a train derailment. Developing a new evacuation plan for residents in this area is a priority.