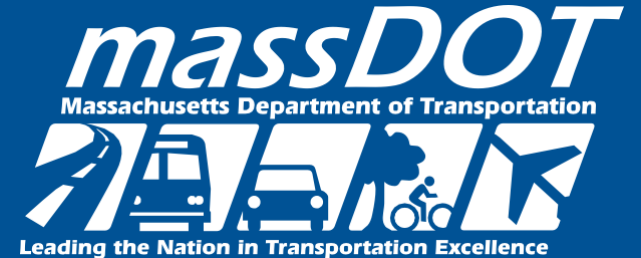


**MassDOT Highway Construction Contract:  
125317  
Pavement Preservation and Related Work on  
I-90  
MassDOT Board of Directors**

*April 16, 2024*



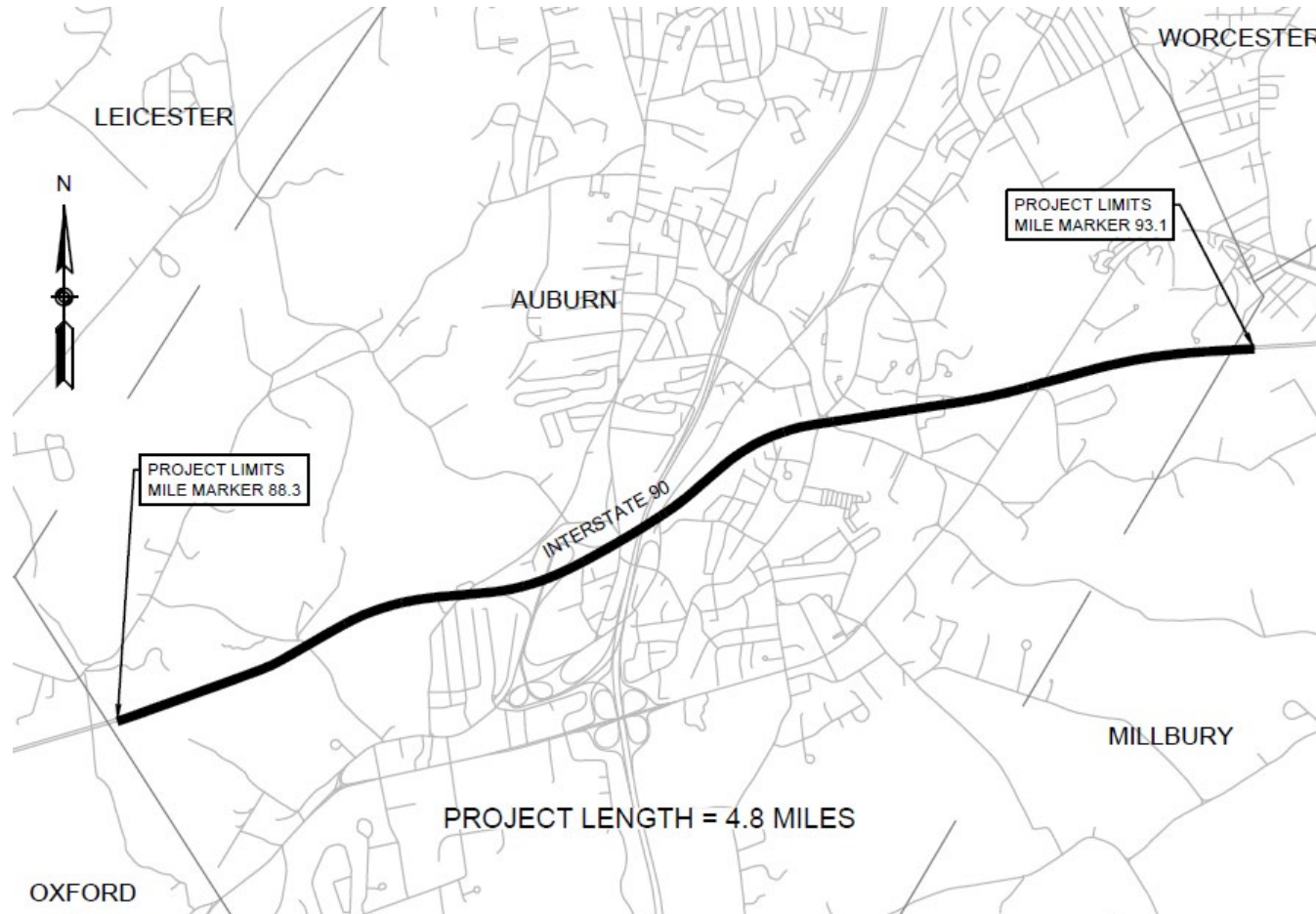
# Table of Contents

3	Project Location
4	Overview
6	Procurement & Budget
7	Request of the Board
9	Appendix

# Project Location

Interstate 90 in Auburn / Millbury (Mile Marker 88.3 to Mile Marker 93.1)

3



# Overview

## Scope of Services

4

- Resurfacing a portion on Interstate 90 through Auburn and Millbury from \*MM 88.3 to MM 93.1.
  - Work primarily consists of milling and resurfacing the mainline, bridge decks, bridge deck transitions, including entry and exit ramps, pull offs, and turnarounds.
  - Other related work includes bridge improvements; upgrading non-compliant guardrail and guard rail end treatments; tree clearing and removal; stormwater improvements including adjusting, rebuilding, and cleaning out drainage structures; replacing damaged frames and grates/covers, and upgrading non-compliant drainage structures within the traveled way with locking frames and grates/covers; resetting granite curb and granite edging; replacing hot mix asphalt berm; installing temporary and permanent pavement markings with new recessed polyurea pavement markings and recessed reflectors; installing milled rumble strips; and implementing all safety controls and signing required for the necessary work zones.
- 
- \*MM-Mile Marker

# Overview

## Purpose & Need/Traffic Impacts

5

### Purpose & Need

- Existing pavement has degraded to a poor level and requires resurfacing. Resurfacing will improve the pavement serviceability, condition, and roadway safety.
- Bridge superstructures and piers have deteriorated and require maintenance work.

### Traffic Impacts

- Lane shifting will have minor impacts to the overall traffic pattern with one lane of traffic in each direction maintained at all times.
- The proposed schedule for nighttime operations shall be an 8-hour day, 5-day week conducted between 9:00 PM and 5:00 AM, Sunday evening through Friday morning, unless otherwise authorized by the Engineer and with certain exceptions for holidays.
- Construction will take approximately two years to complete.

# Procurement and Budget

6

- Project Advertised February 24, 2024
- Engineer's Estimate was \$16,295,520.00
- Bid Opening was April 2, 2024
- Two (2) Bids were received:

PJ Keating Company	\$17,872,384.50
JH Lynch & Sons Inc.	\$19,496,846.46

Line Item	Budget
Bid Amount	\$17,872,384.50
Contingencies (10%)	\$1,787,238.45
Construction Engineering (5%)	\$893,619.22
Traffic Police	\$733,300.00
Engineering Services	\$100,000.00
<b>Total</b>	<b>\$21,386,542.17</b>

- Funding: (NFA) Non-Federal Aid-Tolls-Western Turnpike (WT)

# Request of the MassDOT Board

---

7

- Staff request that the MassDOT Board authorize the Secretary of the Massachusetts Department of Transportation, or her designee, to award and execute MassDOT Construction Contract 125317 – Pavement Preservation and Related Work on I-90 with PJ Keating Company in the amount of \$ 17,872,384.50

# Thank You





# Appendix

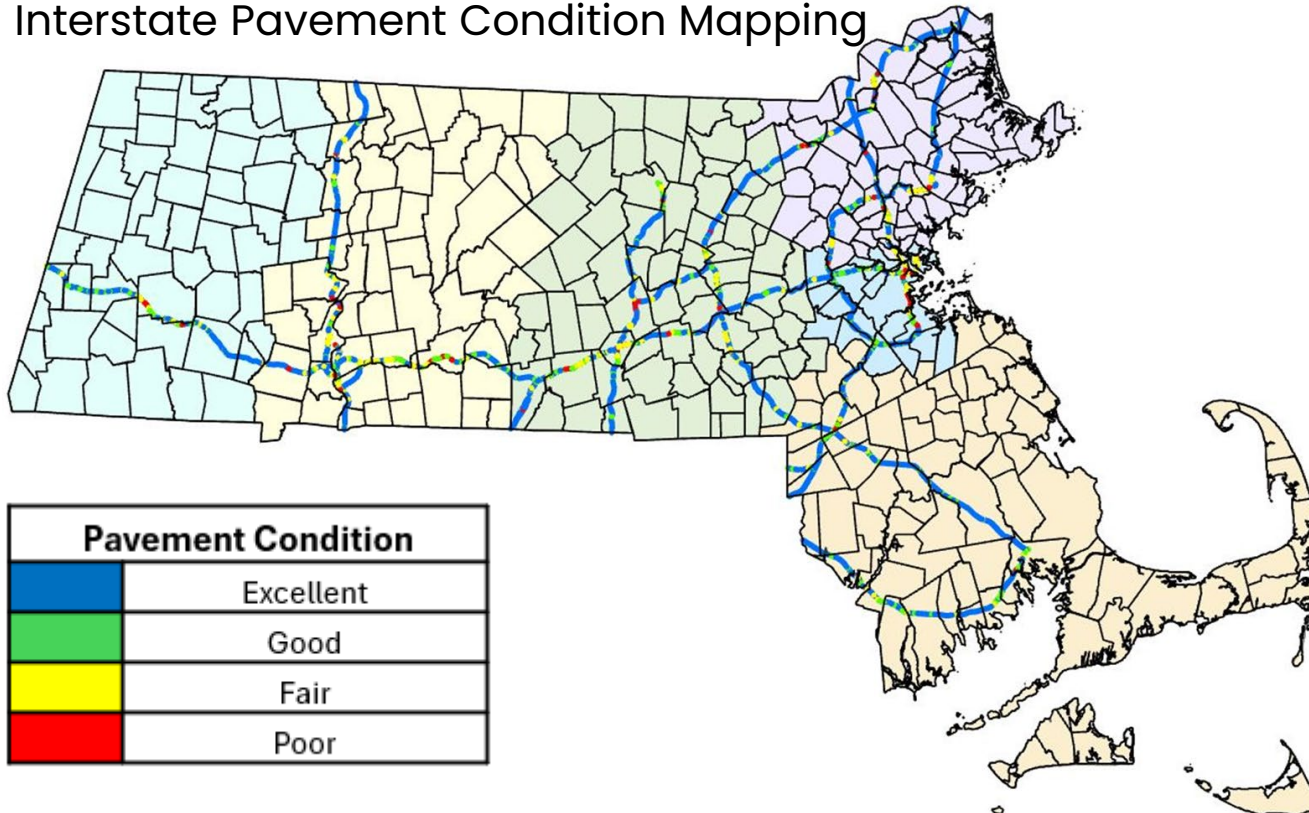
# Appendix

## Questions received from Capital Programs Committee

10

- How does MassDOT initiate a project like this? Is it a result of inspection or observed deterioration?

### Interstate Pavement Condition Mapping





# Appendix

## Questions received from Capital Programs Committee

11

### Pavement Condition Annual Testing

- Pavement Ride Quality (IRI)
- Laser Crack Detection
- Pavement Rutting & Condition
- HD Video
- HD-LiDAR
- GPS Location Services



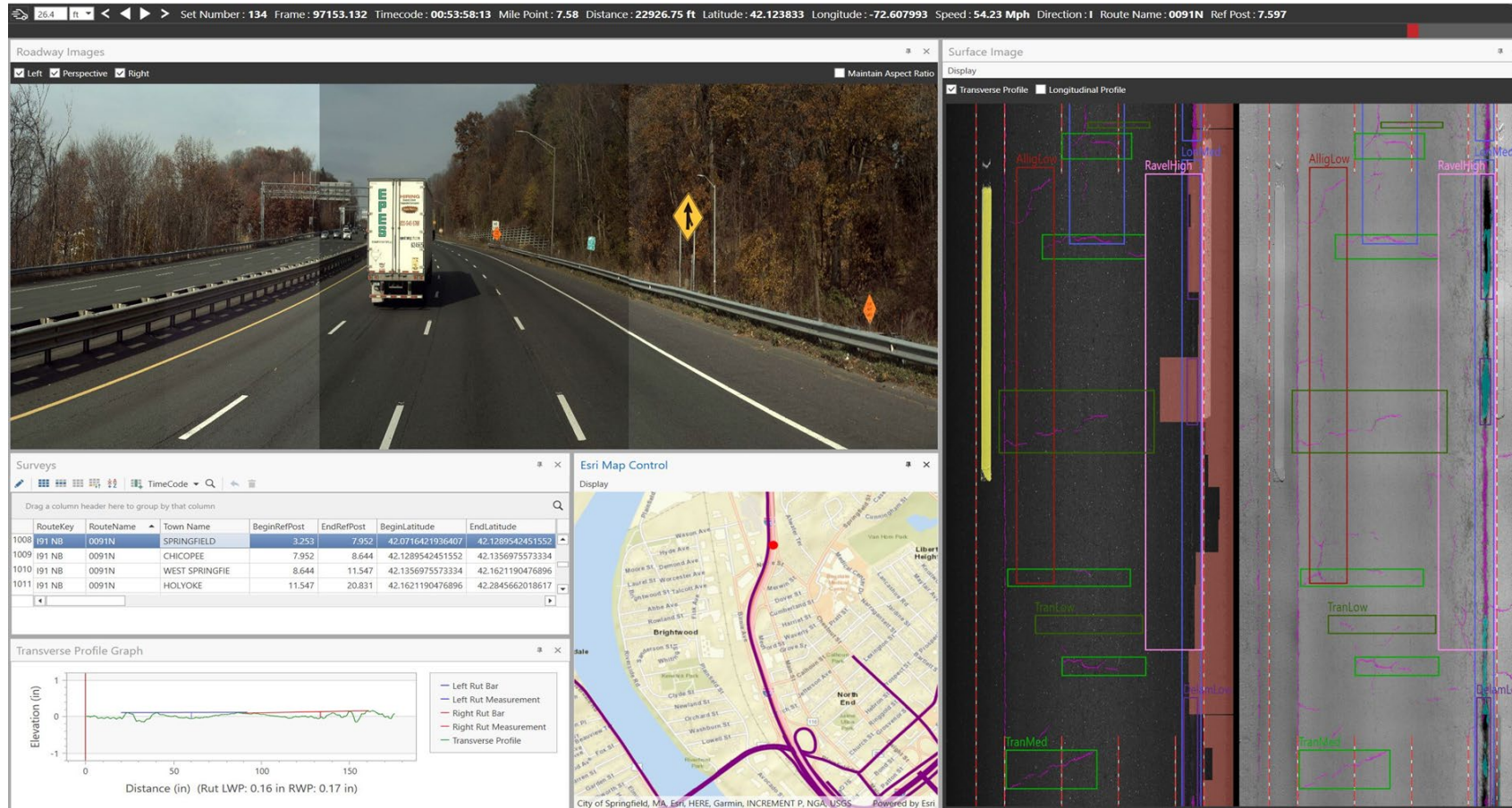
MassDOT's HICAMS (Highway Inventory Collection and Monitoring System) nicknamed the "Pathrunner", was originally purchased in 2013. New "Pathrunner" was delivered to Research & Materials on April 10.



# Appendix

## Questions received from Capital Programs Committee

12



The “Pathrunner” collects ride quality using lasers & 3D cameras to measure and quantify pavement cracking and rutting, HD video for imagery plus a LiDAR system to help develop a virtual model of the highway network.