

**Town of Swansea
Request for Determination of Insignificance
Under the Interbasin Transfer Act**

Staff Recommendation and Request for Vote

Massachusetts Water Resources Commission
August 14, 2025

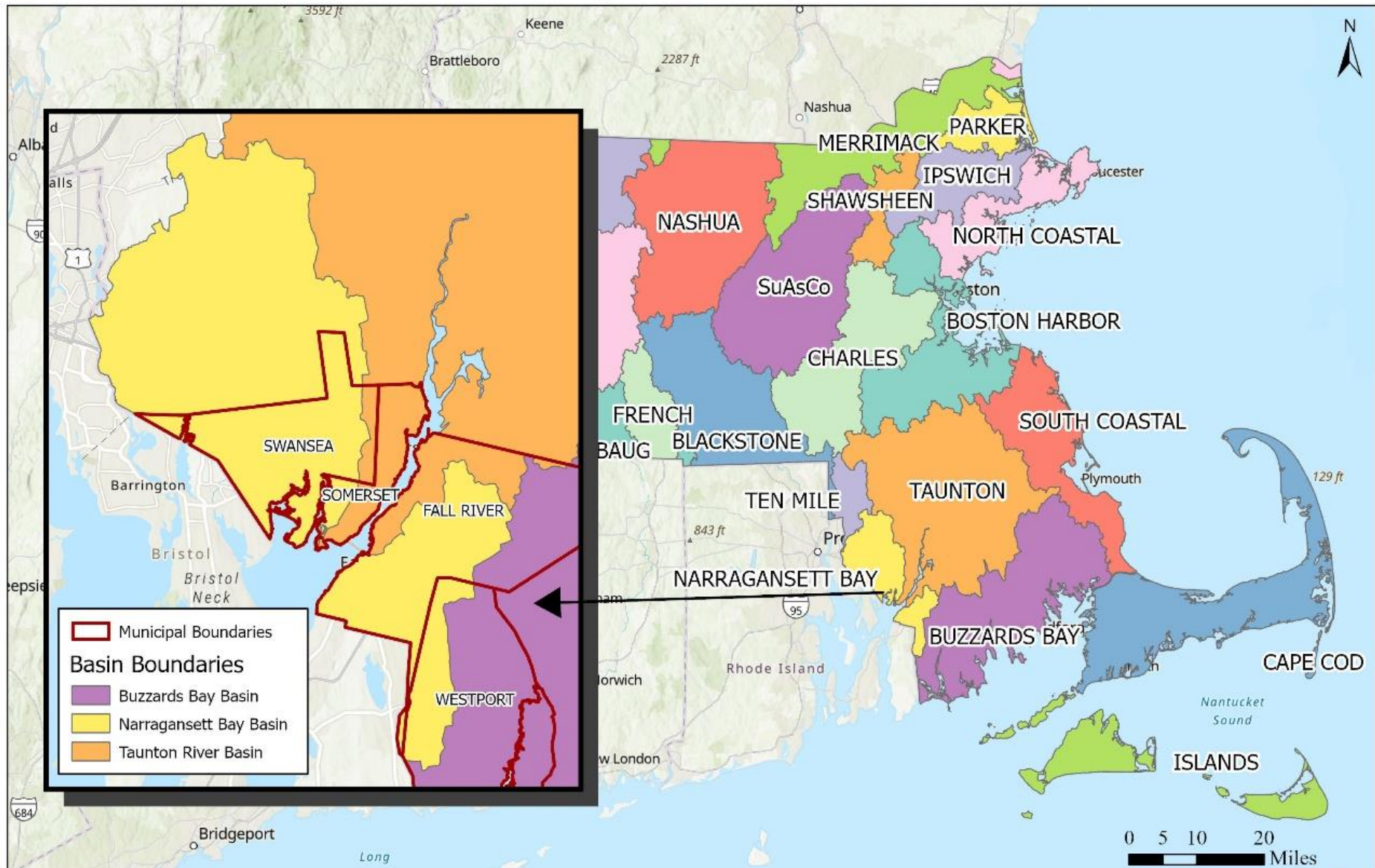
Swansea - Existing Conditions

- Has land area mainly in the Narragansett Bay and Mount Hope Bay Shore Basin, with a small portion in the Taunton River Basin
- Water supply is sourced from groundwater wells in Narragansett Bay and Mount Hope Bay Shore Basin (79.35%), and a desalination plant which withdraws from MA Coastal Basin* (20.65%)
- All existing development utilizes on-site septic systems for wastewater disposal

*WRC approval not required for the desalination plant due to the intra-town exemption

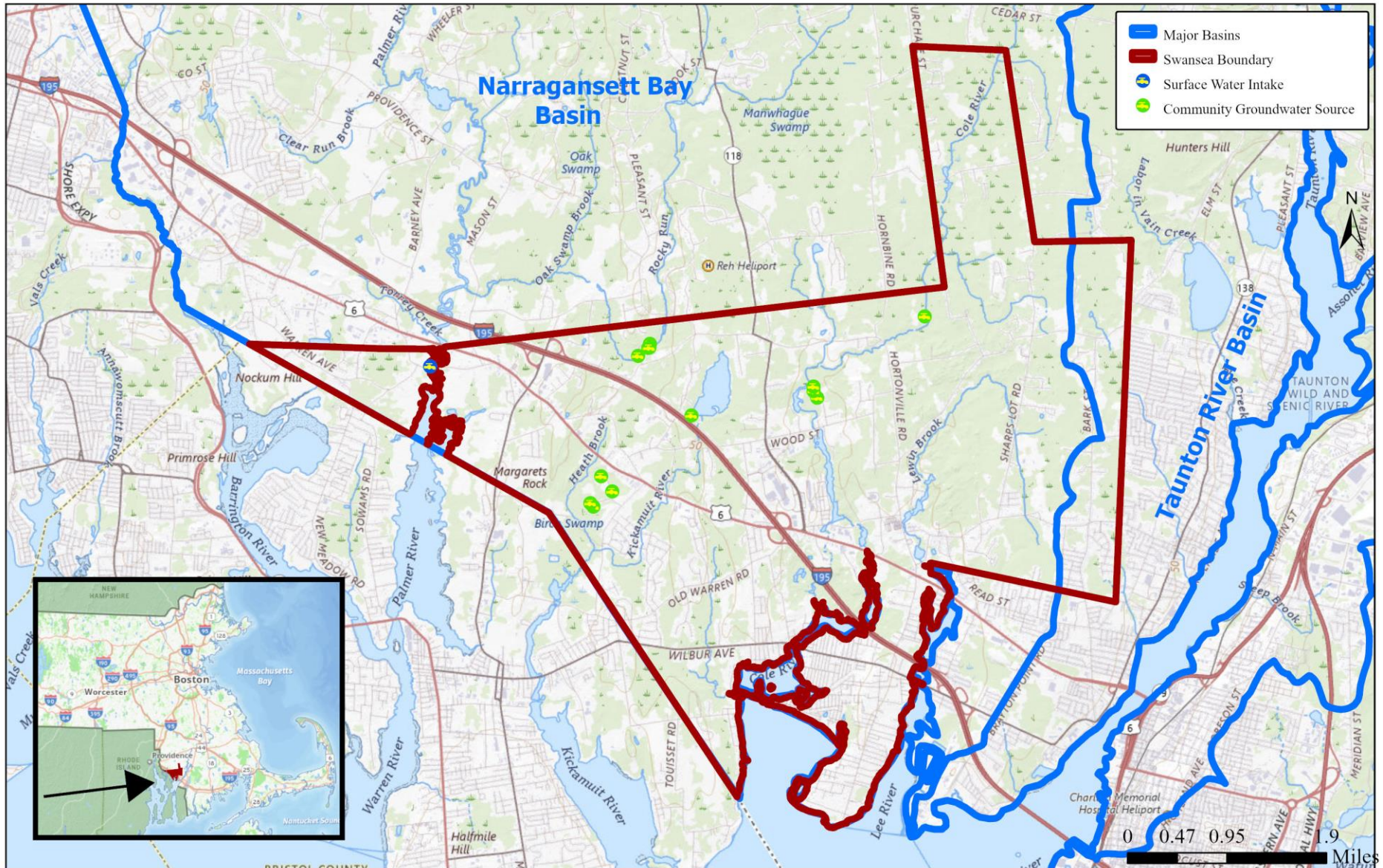


Narragansett Bay Basin





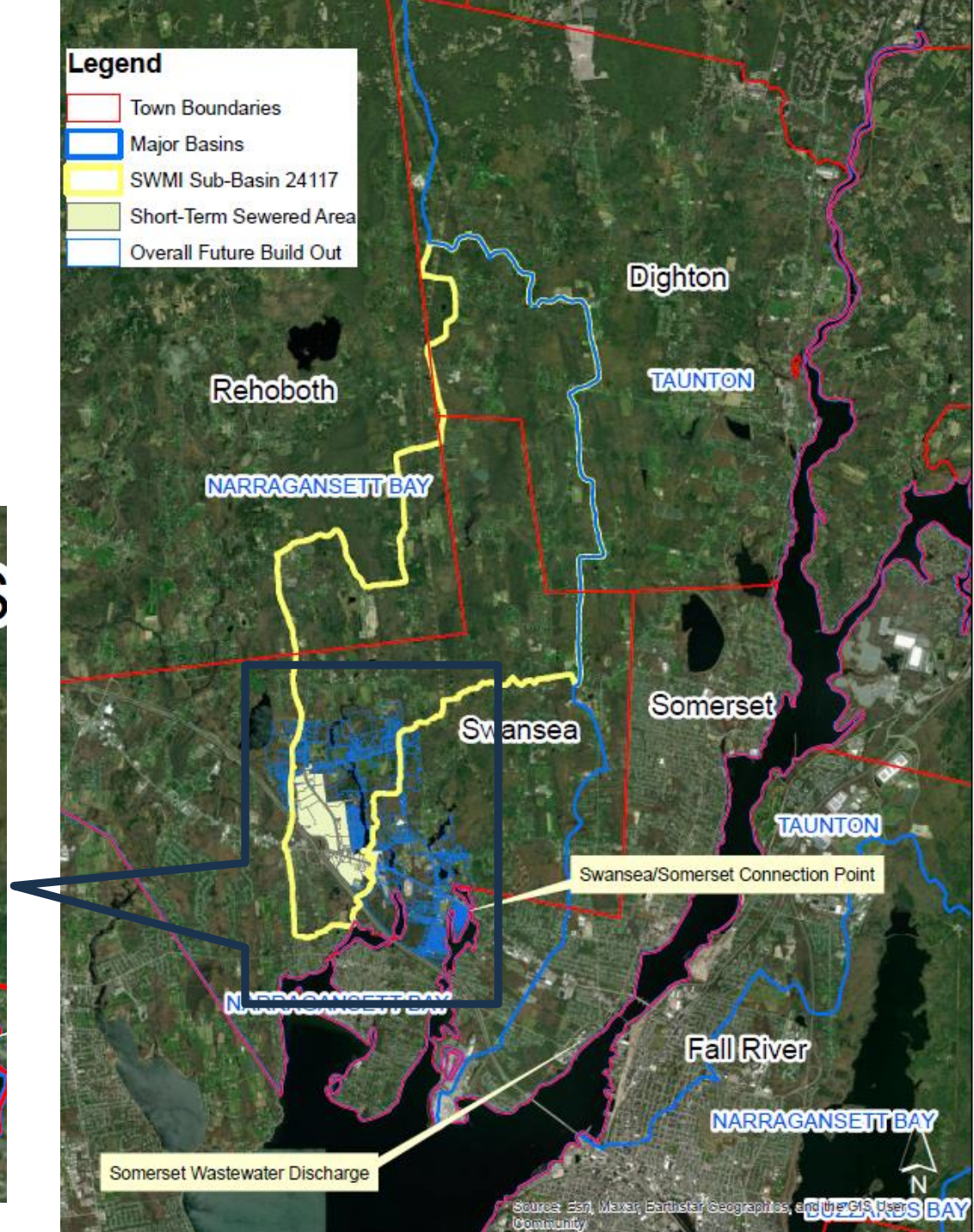
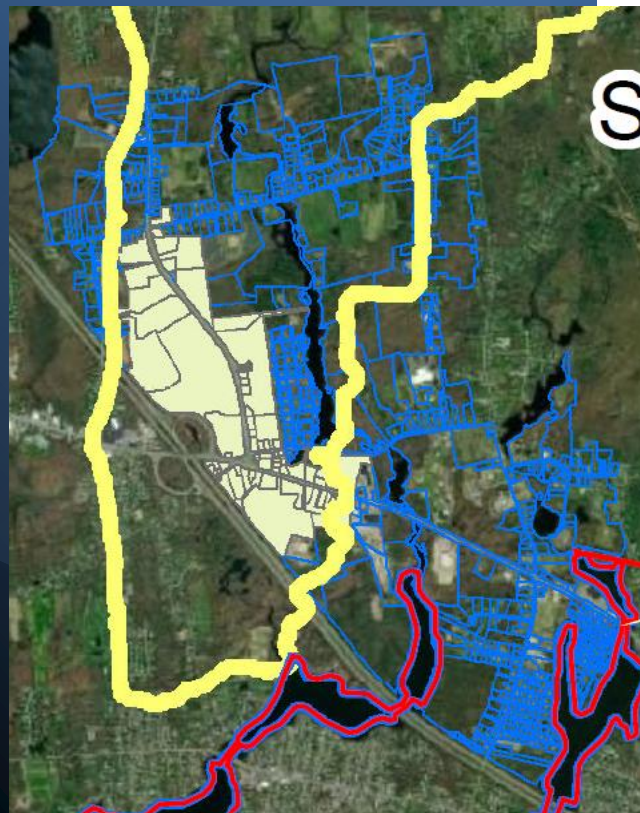
Swansea Location Map



Description of Proposed Transfer

- Swansea is proposing to construct a sewer collection system along the Route 6 corridor in Narragansett Bay Basin
- Wastewater will be sent to Somerset's Water Pollution Control Facility, which discharges to MA Coastal Basin
- Total jurisdictional maximum day wastewater flow from the proposed parcels is 28,850 gpd
 - The portion of water supply sourced from the desalination plant is not jurisdictional as it will be discharged to basin of origin

Map of Proposed Conditions



Streamflow Analysis

- Proposed transfer, including any previously approved transfers, must be less than 5% of the unimpacted 95th percentile exceedance flow as estimated at an appropriate point in the donor basin

5% of Unimpacted 95% Exceedance flow	28,922 gpd
Proposed Interbasin Transfer Volume	28,850 gpd
IBT Request Below Threshold?	Yes

ITA Insignificance Criteria: 313 CMR 4.08(3)

Criterion	Proposal Meets?	Explanation
(a) Is less than 1 MGD	Meets	Proposed maximum interbasin transfer is 28,850 gpd
(b) Is temporary, of short duration and for a purpose other than water supply or wastewater service	Not Applicable	Proposal is long-term for wastewater services
(c) Cumulative, approved transfers, including the proposed amount, are less than 5% of the unimpacted 95% Exceedance Flow	Meets	The cumulative transfer volume is less than 5% of the unimpacted 95% Exceedance Flow
(d) Cumulative, approved annual amount of the transfers, including the proposed amount, are less than 1% of the average annual precipitation on the drainage area of the water body, and less than 5% of the drought year inflow to the water body	Not Applicable	The transfer is primarily derived from streamflow

ITA Insignificance Criteria: 313 CMR 4.08(3)

Criterion	Proposal Meets?	Explanation
(e) The 7Q10 flow, when relied upon in a program of pollution abatement, will not be significantly diminished or prolonged	Not Applicable	No wastewater treatment facilities located downstream of the transfer
(f) Special resource values will not be adversely affected	Meets	Special resource values in the area are not anticipated to be affected by this transfer
(g) Measures to protect instream flows have been taken where appropriate and achievable, and any such measures are proposed as part of the applications	Meets	Changes to downstream flow are expected to be negligible from the current conditions as a result of the transfer
(h) The Commission shall consider the cumulative impacts of all past, authorized or proposed transfers on streamflows in the donor basin	Meets	The only other interbasin transfer occurring from the Narragansett Bay Basin is from Fall River to Westport. These towns are separated from Swansea and Somerset by the Taunton River/Mount Hope Bay. Unlike in other major basins in the Commonwealth, these two areas of the Narragansett Bay Basin do not affect each other or their respective downstream areas because they drain separately to Mount Hope Bay

Staff Recommendation

- Application meets all applicable criteria for Insignificance
- Staff recommends that the WRC finds this project to be Insignificant under the ITA

Next Steps

- The WRC was asked to make a decision on this request by August 31, 2025 to align with a deadline for the State Revolving Fund (SRF) Program
- A vote on the proposal is requested today