



Blue Cross Blue Shield of Massachusetts Foundation: *Behavioral Health Research Agenda Overview*

Kaitlyn Kenney Walsh, PhD

Senior Director for Policy and Research

- Background on BCBSMA Foundation
 - Mission
 - Focus areas
- Policy & Research focus on behavioral health
- Questions

BCBSMA Foundation – Mission

Our mission is to expand access to health care for low-income and vulnerable people in the Commonwealth

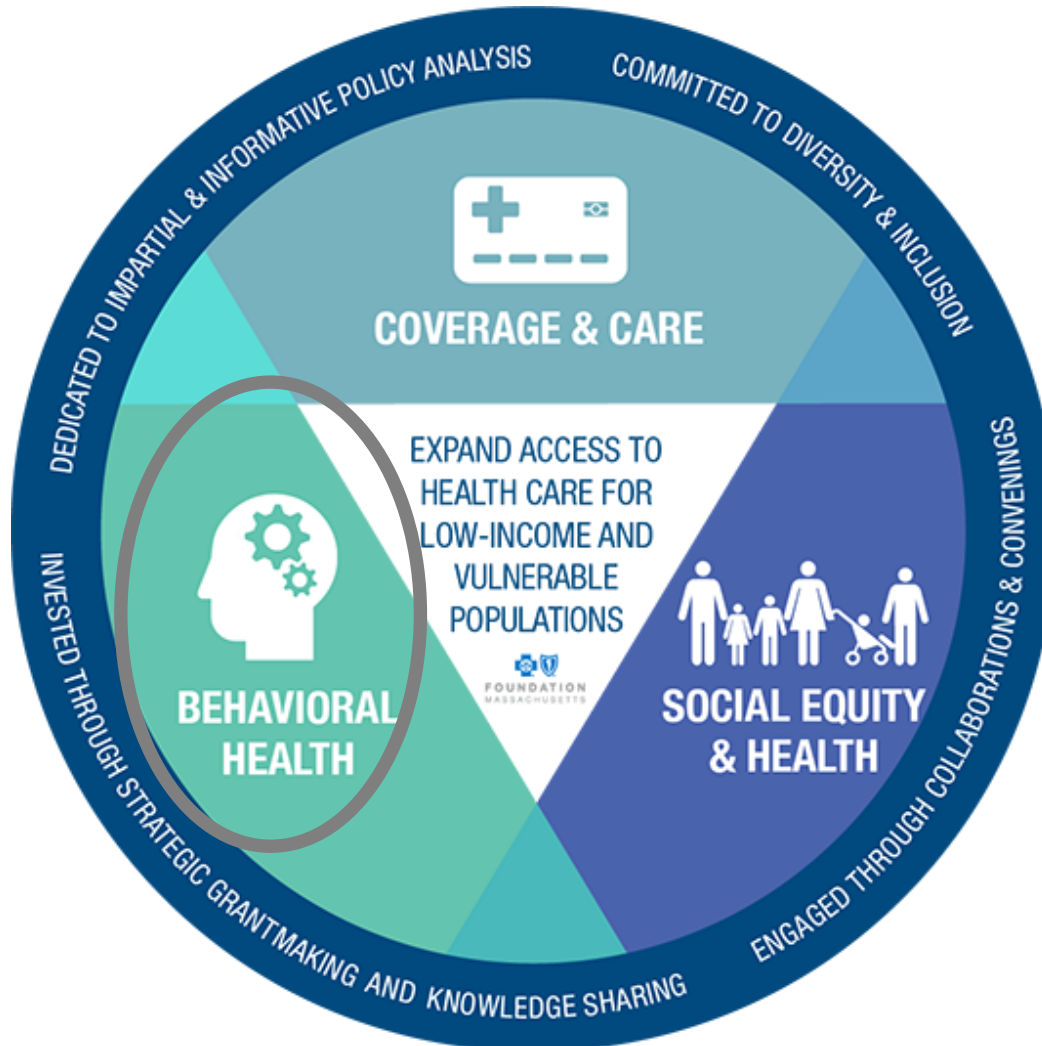
Grantmaking Agenda

Policy & Research
Agenda

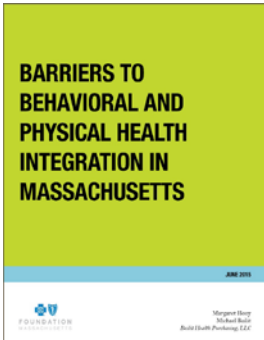
- Fund community programs
- Help launch/expand innovative models
- Build/strengthen community capacity
- Facilitate public-private partnerships

- Conduct policy research and analyses
- Provide independent, objective data
- Elevate and inform public discourse
- Convene stakeholders and build consensus

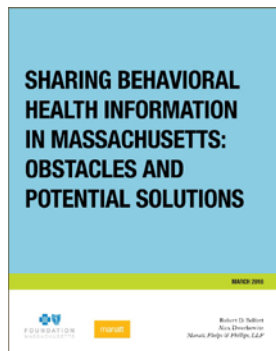
BCBSMA Foundation – Focus areas



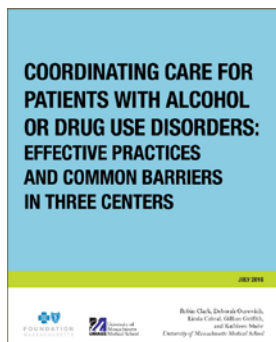
Behavioral Health: Integration



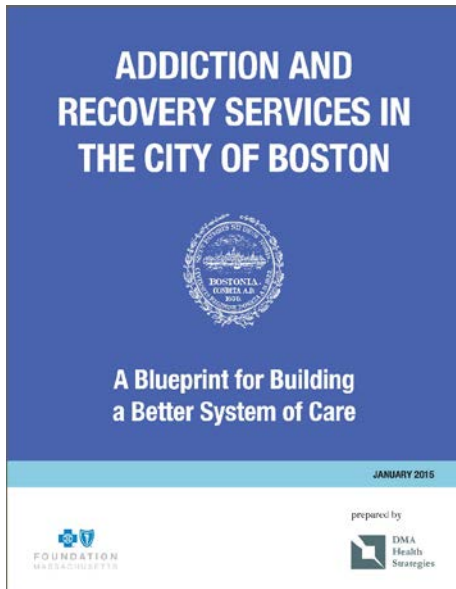
- Documents licensing, privacy, and, reimbursement barriers to integration
- Leverage learning from grantees to inform policy priorities



- Reviews privacy laws relevant to the exchange of information among physical and behavioral health providers
- Identifies opportunities to improve integration without compromising confidentiality



- Describes care integration practices at three centers in Central Massachusetts
- Identifies practices that facilitate provision of integrated care
- Documents persistent challenges remaining



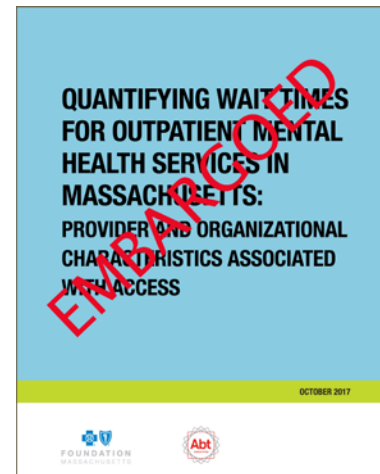
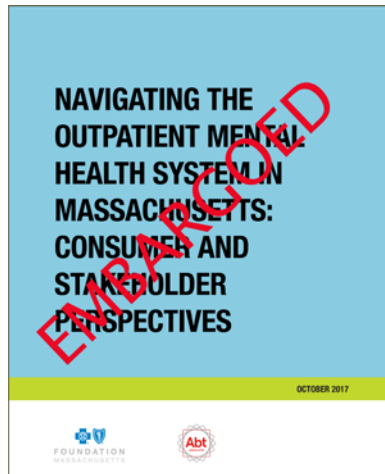
- Identifies the need, demand, and capacity of addiction and recovery services in Boston
- Includes recommendations to enhance and improve the current system of care
- Roadmap for newly created Office of Recovery Services



- Foundational resource for future work on state's behavioral health system
- Includes focus on: historical policy initiatives, prevalence data, workforce and system capacity, affordability, and quality

Behavioral Health: Access (continued)

Releasing soon....



- Comprehensive mixed-methods study analyzing access to outpatient mental health services in Massachusetts
 - Focus groups
 - Stakeholder interviews
 - Provider survey
 - Organization administrator survey

- 2018 Massachusetts Health Reform Survey (MHRS)
 - Survey of non-elderly adults in Massachusetts
 - Developing and prioritizing questions on mental health and substance use conditions
 - Challenges accessing mental health or substance use disorder services
- Designing a comprehensive, high-quality, integrated, and accessible behavioral health system in Massachusetts
 - Model components
 - Mechanisms for ensuring coordination across components of care
 - Roles and responsibilities for public and private entities

Questions?

Thank you!

Kaitlyn Kenney Walsh
Sr. Director, Policy & Research
Kaitlyn.KenneyWalsh@bcbsma.com