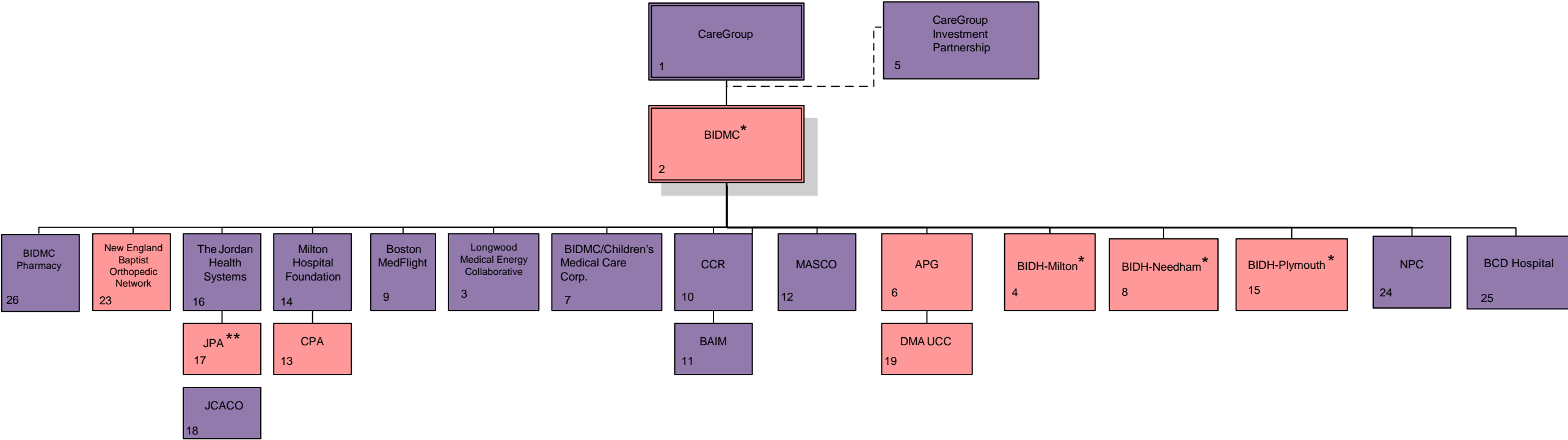
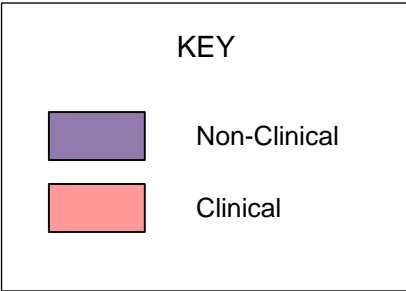


BIDMC CORPORATE ORGANIZATION CHART
(as of January 1, 2018)

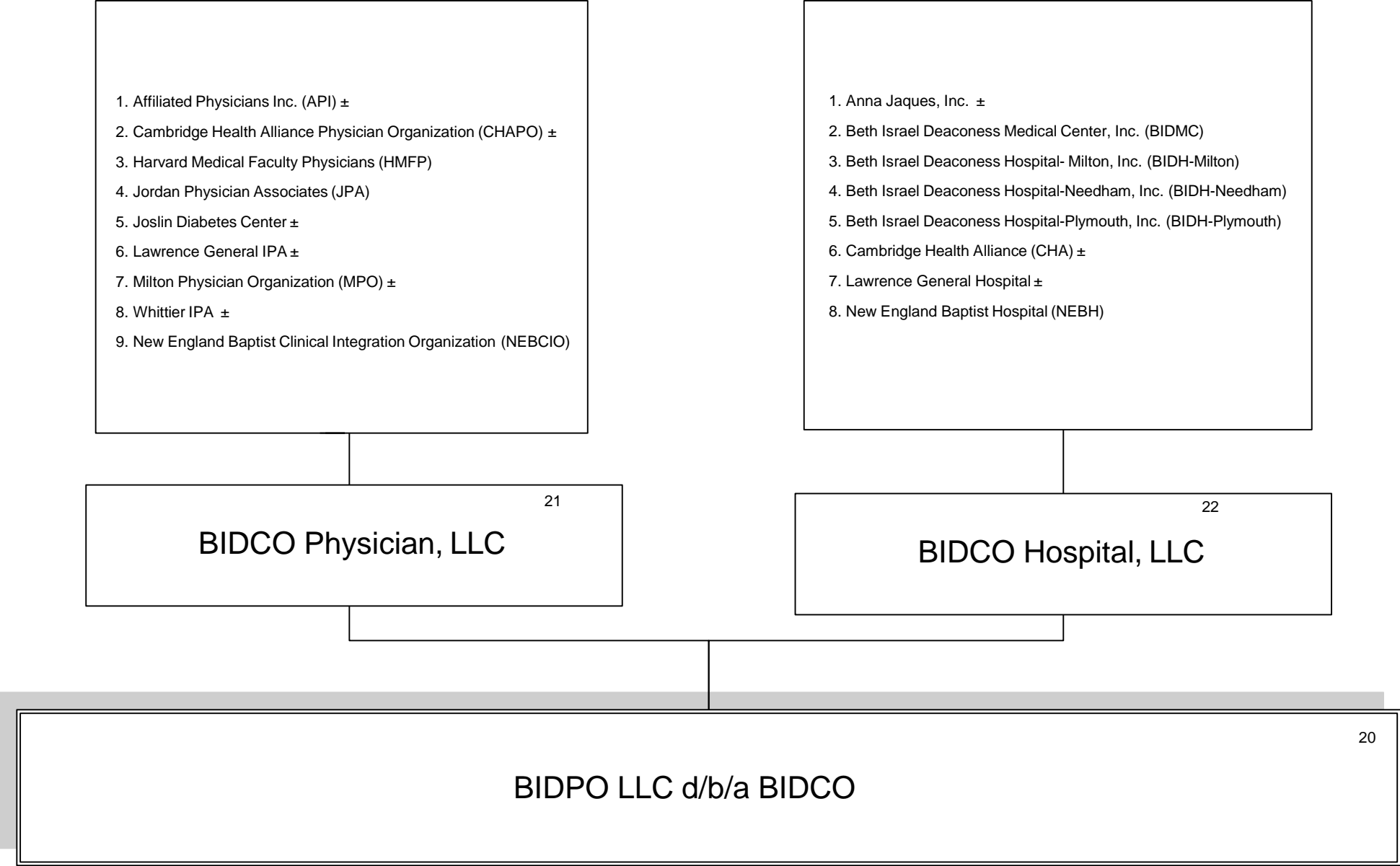


* Denotes membership in
BIDCO Hospital LLC., which is a member of BIDCO, an accountable care organization (ACO).
See ACO corporate structure chart on next page and notes 20 and 22 for more information.

** Denotes membership in
BIDCO Physician LLC which is a member of BIDCO, an ACO. See ACO corporate structure
chart next page and notes 20 and 21 for more information.



Accountable Care Organization (ACO) Corporate Structure



± denotes organizations not corporately affiliated with BIDMC

Notes to BIDMC Corporate Organizational Chart

1. CareGroup, Inc. is the sole corporate member of Beth Israel Deaconess Medical Center, Inc. (BIDMC), Mount Auburn Hospital (MAH) and New England Baptist Hospital (NEBH). For tax purposes, CareGroup is a Type III, Functionally Integrated, support organization of BIDMC, Beth Israel Deaconess Hospital-Needham, Inc., Beth Israel Deaconess Hospital-Milton, Inc., Beth Israel Deaconess Hospital-Plymouth, Inc., MAH, NEBH, Harvard Medical Faculty Physicians at Beth Israel Deaconess Medical Center, Inc. and Medical Care of Boston Management Corporation d/b/a Beth Israel Deaconess HealthCare a/k/a Affiliated Physicians Group. CareGroup may also serve as a support organization of, and/or provide management services to, the entities for which these supported organizations serve as sole corporate member.
2. Beth Israel Deaconess Medical Center, Inc. (BIDMC) is a tertiary care academic medical center which relies on the integrally related services of HMFP to fulfill its tax-exempt missions of providing world class patient care, cutting edge research and exemplary medical education programs. BIDMC is a teaching hospital of Harvard Medical School and CareGroup is its sole corporate member.
3. Longwood Medical Energy Collaborative, Inc. (formerly Harvard Medical Collaborative, Inc.) is a support organization formed to plan, coordinate and implement energy purchase, production and conservation activities for its six members, all of which are 501(c)(3) organizations. The members are President and Fellows of Harvard College (Harvard Medical School) and its affiliated academic medical centers in the Longwood Medical Area: BIDMC, Brigham & Women's Hospital, Inc., Dana-Farber Cancer Institute, Inc., Joslin Diabetes Center, Inc. and The Children's Medical Center Corporation (the sole corporate member of The Children's Hospital Corporation).
4. Beth Israel Deaconess Hospital-Milton, Inc. (BIDH-Milton) is a separately-licensed community hospital. BIDMC is the sole corporate member of BIDH-Milton.
5. All partners in the CareGroup Investment Partnership, LLP are tax-exempt entities, mostly within the CareGroup network. The partnership is engaged in acquiring, owning, disposing of and otherwise investing in stocks, bonds, and other securities and financial products. BIDMC holds the largest ownership interest at approximately 43% as of September 30, 2016. CareGroup is the tax matters partner.
6. Medical Care of Boston Management Corporation d/b/a “Beth Israel Deaconess Healthcare”, known internally as Affiliated Physicians Group (APG) is a non-profit organization that operates primary care and family medicine practices, extended care community and home care programs, and certain specialty practices. BIDMC is the sole corporate member.

Notes to BIDMC Corporate Organizational Chart

7. BIDMC and The Children's Hospital Corporation d/b/a "Boston Children's Hospital" are trustees of a nominee trust known as the "Trust for the Benefit of The Beth Israel Hospital Association and The Children's Hospital Corporation" (the Trust), which owns a building located at 482 Bedford Street, in Lexington, MA. BIDMC and CHC each operate separately licensed satellite facilities in a building owned by the Trust. The corporation listed here, Beth Israel Deaconess Medical Center and Children's Hospital Medical Care Corporation, (BIDMC/Children's Medical Care Corp.) formerly served as the manager of these facilities, but the agreement for such management services has been terminated. As such, the entity is an inactive Type I support organization of BIDMC and The Children's Hospital Corporation.
8. Beth Israel Deaconess Hospital-Needham, Inc. (BIDH-Needham) is a separately-licensed community hospital. BIDMC is the sole corporate member of BIDH-Needham.
9. New England Life Flight, Inc. d/b/a Boston Medflight (Boston Medflight) began operations in July 1985, and provides critical care transportation services by air and ground in Massachusetts and surrounding states. Members of this nonprofit corporation include BIDMC, Boston Medical Center Corporation, The Brigham and Women's Hospital, Inc., Children's Hospital Corporation, The Massachusetts General Hospital and Tufts Medical Center, Inc.
10. BIDMC and Beth Israel Deaconess Department of Medicine Foundation, Inc. (BIDDM) are each 50% members of CareGroup Clinical Research, LLC (CCR). CCR's general purpose is to own an equity interest in a contract clinical research organization. CCR is one of two members of The Baim Institute for Clinical Research, Inc f/k/a Harvard Clinical Research Institute, Inc. (see *#11 below*).
11. The Baim Institute for Clinical Research, Inc. (Baim) is a tax-exempt research entity that is contracted by a sponsor to perform one or more research-related functions. CCR and Partners Healthcare System, Inc. are the corporate members of the Baim Institute for Clinical Research.
12. Medical Academic and Scientific Community Organization, Inc. (MASCO). MASCO is a non-profit organization, comprised of Longwood Medical and Academic Area organizations, formed to coordinate with the government regarding planning and development of the Longwood Medical and Academic Area. BIDMC is one of its corporate members.
13. Community Physicians Associates, Inc. (CPA) is a physician's practice employment organization, which employs primary care physicians and their support staff. Milton Hospital Foundation is the sole corporate member of CPA.

Notes to BIDMC Corporate Organizational Chart

14. Milton Hospital Foundation, Inc. supports, encourages and promotes the development of comprehensive, integrated health-care related services for the advancement of the health and well-being of the community through providing financial management and other assistance to BIDH-Milton and Community Physicians Associates. Milton Hospital Foundation is a Type I support organization of BIDH-Milton. This organization does not hold any assets. BIDMC is the sole corporate member of Milton Hospital Foundation.
15. Beth Israel Deaconess Hospital – Plymouth, Inc. (BIDH-Plymouth) is a separately-licensed community hospital. BIDMC is the sole corporate member of BIDH-Plymouth.
16. The Jordan Health Systems, Inc. is a not-for-profit organization which operates exclusively for the benefit of Beth Israel Deaconess Hospital-Plymouth, Inc. and its affiliated organizations, in the conduct of their charitable, educational and scientific functions.
17. Jordan Physician Associates, Inc. (JPA) is a not-for-profit organization that operates physician practices and provides patient care in the communities served by BIDH-Plymouth.
18. Jordan Community ACO, Inc. (JCACO) is an inactive corporation, which served as an accountable care organization and participated in the Medicare Shared Savings Programs and other programs.
19. Dedham Medical Urgent Care Center Affiliated with Beth Israel Deaconess Medical Center, LLC (DMA UCC) is a physician office practice operating as an urgent care center that provides treatment for non-life threatening illnesses and injuries. Medical Care of Boston Management Corporation (APG) and Atrius Health, Inc. each hold 50% of the membership interest.
20. Beth Israel Deaconess Physician Organization, LLC d/b/a Beth Israel Deaconess Care Organization, (BIDCO) operates as an accountable care organization and contracting entity for physicians who are members of BIDCO Physician LLC and hospitals who are members of BIDCO Hospital LLC. BIDCO Physician LLC and BIDCO Hospital LLC each hold 50% of the membership interests in BIDCO, respectively.
21. BIDCO Physician, LLC's main purpose is to acquire, hold and dispose of a membership interest in Beth Israel Deaconess Physician Organization, LLC d/b/a Beth Israel Deaconess Care Organization (BIDCO), which operates an accountable care organization.
22. BIDCO Hospital, LLC's main purpose is to acquire, hold and dispose of a membership interest in Beth Israel Deaconess Physician Organization, LLC d/b/a Beth Israel Deaconess Care Organization (BIDCO), which operates an accountable care organization.

Notes to BIDMC Corporate Organizational Chart

23. New England Baptist Orthopedic Network, LLC is a joint venture created by BIDMC and NEBH related to the delivery of orthopedic services. BIDMC and NEBH have ownership interests of 33.7% and 66.3% respectively.
24. Northeast Purchasing Coalition, LLC (NPC) was started in January 2011 with 20 health networks representing over 90 acute care facilities to be a clinical driven hospital supply chain network (now including pharmacy). Membership voting interests and the costs associated with being members are based on each member's total spend through the NPC. As of January 1, 2017, BIDMC is the 4th largest member health network (out of 20 current members).
25. BCD Hospital Energy Collaborative, LLC (BCD Hospital) is a Delaware Limited Liability company formed in 2017 and owned by BIDMC, The Children's Hospital Corporation, and Dana-Farber Cancer Institute, Inc., all of which are organizations exempt from tax under Section 501(c)3 of the Internal Revenue Code. BCD was formed in connection with the pursuit of a special transaction by BIDMC and the other participating hospitals. BIDMC holds 32.91% of the membership interests in BCD.
26. BIDMC Pharmacy, Inc.'s (BIDMC Pharmacy) primary mission is to operate one or more pharmacies primarily for the benefit of BIDMC and BIDMC's patients. This entity was established in August 2017 and has not yet begun formal operations. BIDMC Pharmacy, Inc. will file a Form 1023, Application for Recognition of Exemption Under Section 501(c)(3) of the Internal Revenue Code of 1986 as amended, and expects to qualify as a public charity and Type I support organization of BIDMC. BIDMC is the sole corporate member.