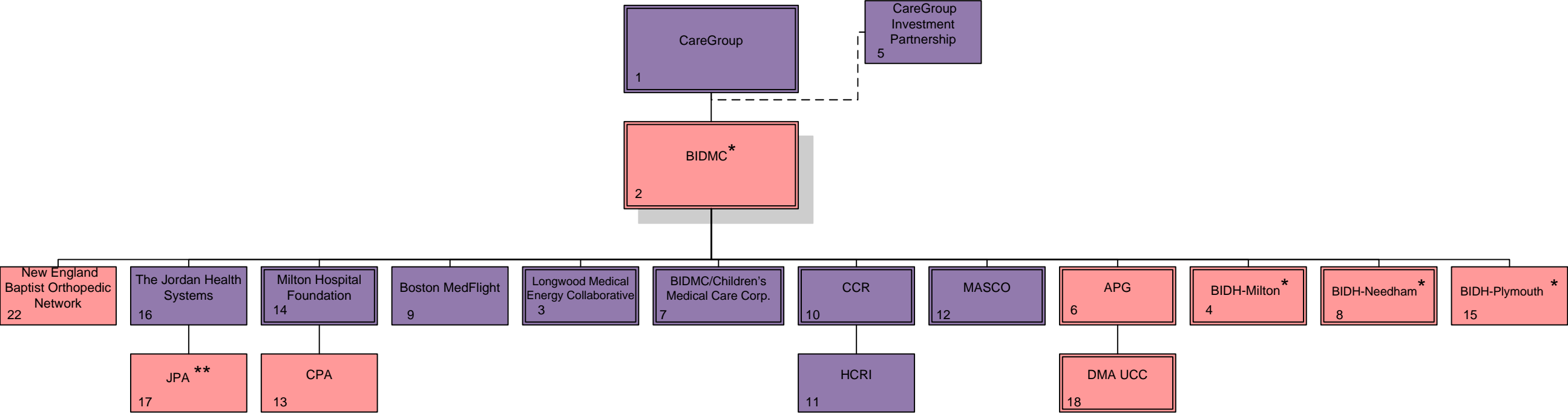


BIDMC CORPORATE ORGANIZATION CHART



* Denotes membership in BIDCO Hospital LLC., which is a member of BIDCO, an accountable care organization (ACO). See ACO corporate structure chart on next page and notes 19 and 20 for more information.

** Denotes membership in BIDCO Physician LLC which is a member of BIDCO, an ACO. See ACO corporate structure chart next page and notes 20 and 21 for more information.

Non-Clinical

Clinical

Accountable Care Organization (ACO) Corporate Structure

- 1. Affiliated Physicians Inc. (API) ±
- 2. Cambridge Health Alliance Physician Organization (CHAPO) ±
- 3. Harvard Medical Faculty Physicians (HMFP)
- 4. Jordan Physician Associates (JPA)
- 5. Joslin Diabetes Center ±
- 6. Lawrence General IPA ±
- 7. Milton Physician Organization (MPO) ±
- 8. Whittier IPA ±

BIDCO Physician, LLC

21

- 1. Anna Jaques, Inc. ±
- 2. Beth Israel Deaconess Medical Center, Inc. (BIDMC)
- 3. Beth Israel Deaconess Hospital- Milton, Inc. (BIDH-Milton)
- 4. Beth Israel Deaconess Hospital-Needham, Inc. (BIDH-Needham)
- 5. Beth Israel Deaconess Hospital-Plymouth, Inc. (BIDH-Plymouth)
- 6. Cambridge Health Alliance (CHA) ±
- 7. Lawrence General Hospital ±

BIDCO Hospital, LLC

20

BIDPO LLC d/b/a BIDCO LLC

19

Notes to BIDMC Corporate Organizational Chart

1. CareGroup, Inc. is the sole corporate member of Beth Israel Deaconess Medical Center, Inc. (BIDMC), Mount Auburn Hospital (MAH) and New England Baptist Hospital (NEBH). For tax purposes, CareGroup is a Type III support organization of BIDMC, Beth Israel Deaconess Hospital Needham, MAH, NEBH, Harvard Medical Faculty Physicians at Beth Israel Deaconess Medical Center, Inc. (HMFP) and Medical Care of Boston Management Corp, Inc. CareGroup also serves as a support organization of, and provides management services to, other entities within the CareGroup network of affiliated entities.
2. Beth Israel Deaconess Medical Center, Inc. (BIDMC) is a tertiary care academic medical center which relies on the integrally related services of HMFP to fulfill its tax-exempt missions of providing world class patient care, cutting edge research and exemplary medical education programs. CareGroup is the sole corporate member of BIDMC.
3. Longwood Medical Energy Collaborative, Inc. (formerly Harvard Medical Collaborative, Inc.) is a support organization formed to plan, coordinate and implement energy purchase, production and conservation activities for its six members, all of which are 501(c)(3) organizations. The members are President and Fellows of Harvard College (Harvard Medical School) and its affiliated academic medical centers in the Longwood Medical Area: BIDMC, Brigham & Women's Hospital, Inc., Dana-Farber Cancer Institute, Inc., Joslin Diabetes Center, Inc. and The Children's Medical Center Corporation (the sole corporate member of The Children's Hospital Corporation).
4. Beth Israel Deaconess Hospital-Milton, Inc. (BIDH-Milton) is a separately-licensed community hospital. BIDMC is the sole corporate member of BIDH-Milton.
5. All partners in the CareGroup Investment Partnership, LLP are tax-exempt entities, mostly within the CareGroup network. The partnership is engaged in acquiring, owning, disposing of and otherwise investing in stocks, bonds, and other securities and financial products. BIDMC holds the largest ownership interest at approximately 40% as of September 30, 2013. CareGroup is the tax matters partner.
6. Medical Care of Boston Management Corporation. d/b/a "Beth Israel Deaconess Healthcare" is a physician practice that operates primary care and family medicine practices, hospitalist programs, and sub-acute care programs. BIDMC is the sole corporate member and internally refers to Medical Care of Boston Management Corp as Affiliated Physicians Group (APG).
7. BIDMC and The Children's Hospital Corporation (CHC) are trustees of a nominee trust known as the "Trust for the Benefit of The Beth Israel Hospital Association and The Children's Hospital Corporation" (the Trust), which owns a building located at 482 Bedford Street, in Lexington, MA. BIDMC and CHC each operate separately licensed satellite facilities in a building owned by

Notes to BIDMC Corporate Organizational Chart

the Trust. The corporation listed here, BIDMC and The Children's Hospital Medical Care Corporation (BIDMC/Children's Medical Care Corp.) formerly served as the manager of these facilities, but the agreement for such management services has been terminated. As such, the entity is an inactive Type I support organization of BIDMC and The Children's Hospital Corporation. BIDMC and CHB each have 50% of the membership interests.

8. Beth Israel Deaconess Hospital-Needham, Inc. (BIDH-Needham) is a separately-licensed community hospital. BIDMC is the sole corporate member of BIDH-Needham.
9. New England Life Flight, Inc. d/b/a Boston Medflight (Boston Medflight) began operations in July 1985, and provides critical care transportation services by air and ground in Massachusetts and surrounding states. Members of this corporation include BIDMC, Boston Medical Center, Brigham and Women's Hospital, Children's Hospital, Massachusetts General Hospital and Tufts Medical Center.
10. BIDMC and Beth Israel Deaconess Department of Medicine Foundation, Inc. (BIDDM) are each 50% members of CareGroup Clinical Research, LLC (CCR). CCR's general purpose is to own an equity interest in a contract clinical research organization. CCR is one of three members of Harvard Clinical Research Institute, Inc. (see #11 below).
11. Harvard Clinical Research Institute, Inc. (HCRI) is a tax-exempt research entity that is contracted by a sponsor to perform one or more research-related functions. CCR, Partners Healthcare, and the President and Fellows of Harvard College are the three corporate members of HCRI.
12. Medical Academic and Scientific Community Organization, Inc. (MASCO). MASCO is a non-profit organization, comprised of Longwood Medical and Academic Area organizations, formed to coordinate with government regarding planning and development of the Longwood Medical and Academic Area. BIDMC is one of 17 corporate members.
13. Milton Hospital Foundation supports, encourages and promotes the development of comprehensive, integrated health-care related services for the advancement of the health and well-being of the community through providing financial management and other assistance to BIDH-Milton and CPA. Milton Hospital Foundation is a Type I support organization of BIDH-Milton. This organization does not hold any assets. BIDMC is the sole corporate member of Milton Hospital Foundation.
14. Community Physicians Associates (CPA) is a physician's practice employment organization, which employs primary care physicians and their support staff. Milton Hospital Foundation is the sole corporate member of CPA.

Notes to BIDMC Corporate Organizational Chart

15. Beth Israel Deaconess Hospital – Plymouth, Inc. (BIDH-Plymouth) is a separately-licensed community hospital. BIDMC is the sole corporate member of BIDH-Plymouth.
16. The Jordan Health Systems, Inc. is a not-for-profit organization which operates exclusively for the benefit of Beth Israel Deaconess Hospital-Plymouth, Inc. and its affiliated organizations, in the conduct of their charitable, educational and scientific functions.
17. Jordan Physician Associates, Inc. (JPA) is a not-for-profit organization that employs physicians, nurse practitioners and other physician extenders.
18. Dedham Medical Urgent Care Center Affiliated with Beth Israel Deaconess Medical Center, LLC (DMA UCC) is a physician office practice operating as an urgent care center that provides treatment for non-life threatening illnesses and injuries. Medical Care of Boston Management Corporation and Atrius Health, Inc. each hold 50% of the membership interest.
19. Beth Israel Deaconess Physician Organization, LLC now is “doing business as” Beth Israel Deaconess Care Organization, (BIDCO). It operates as an accountable care organization and contracting entity for physicians who are members of BIDCO Physician LLC and hospitals who are members of BIDCO Hospital LLC. BIDCO Physician LLC and BIDCO Hospital LLC each hold 50% of the membership interests in BIDCO, respectively.
20. BIDCO Hospital, LLC main purpose is to acquire, hold and dispose of a membership interest in Beth Israel Deaconess Hospital Organization, LLC d/b/a Beth Israel Deaconess Care Organization (BIDCO), which operates an accountable care organization.
21. BIDCO Physician, LLC’s main purpose is to acquire, hold and dispose of a membership interest in Beth Israel Deaconess Physician Organization, LLC d/b/a Beth Israel Deaconess Care Organization (BIDCO), which operates an accountable care organization.
22. During the fiscal year ended September 30, 2014, BIDMC and New England Baptist Hospital (NEBH) created a joint venture related to the delivery of orthopedic services. BIDMC and NEBH have ownership interests of 33.7% and 66.3% respectively.