



# Big Benton Pond

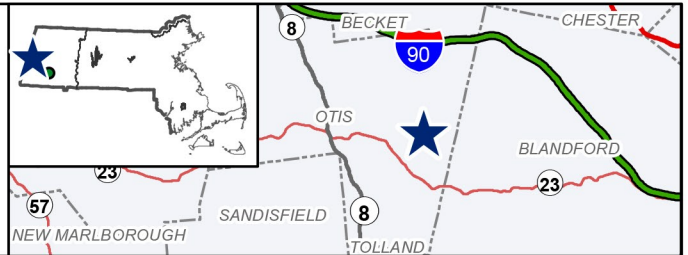
327 Acres

Otis

Farmington River Watershed

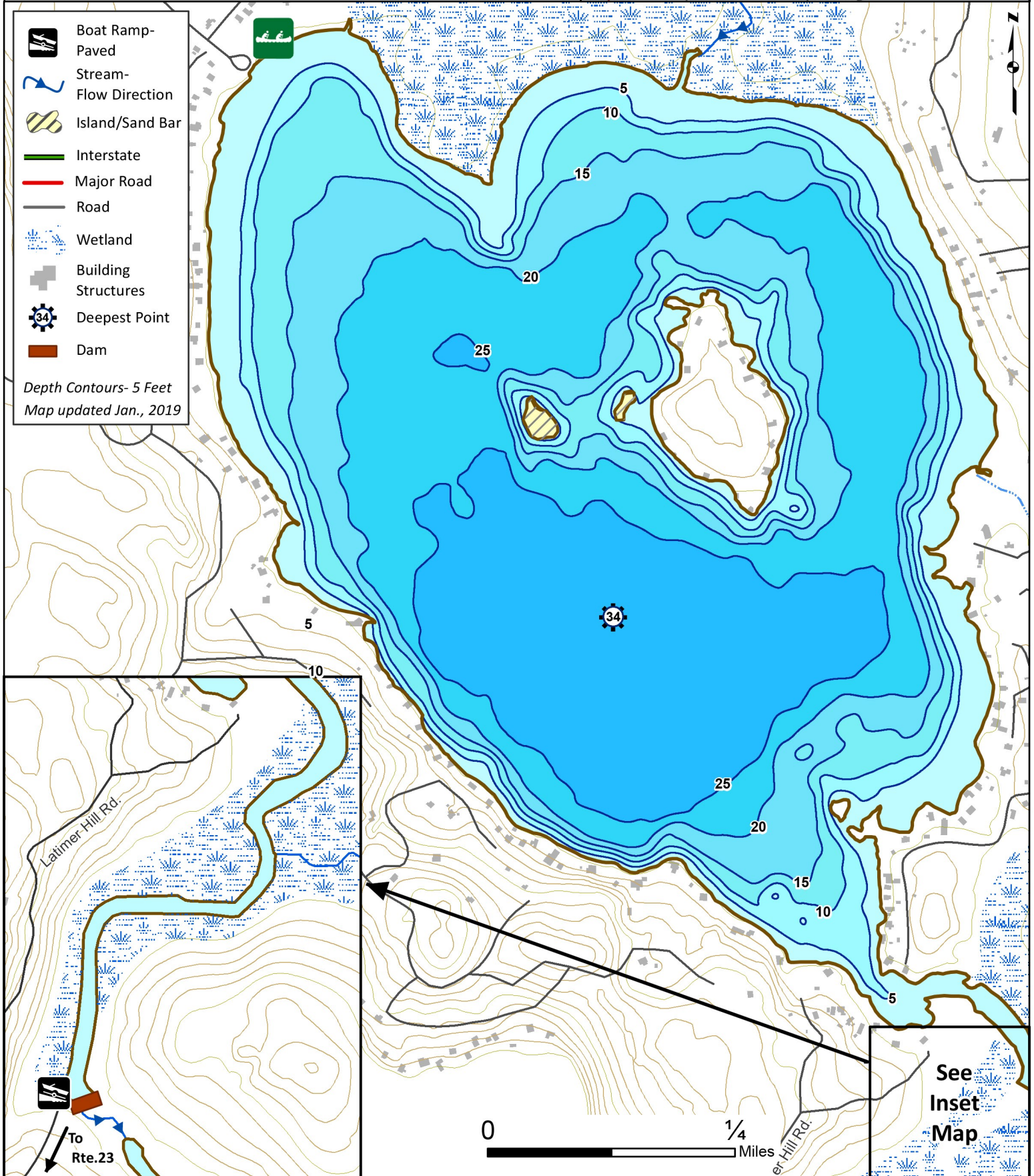
Coordinates: 73°2'21" W 42°10'46" N

USGS Quad: OTIS



- Boat Ramp-Paved
- Stream-Flow Direction
- Island/Sand Bar
- Interstate
- Major Road
- Road
- Wetland
- Building Structures
- Deepest Point
- Dam

Depth Contours- 5 Feet  
Map updated Jan., 2019



See  
Inset  
Map