

# DCR's Blackstone River Greenway Segment 1



## DCR Public Meeting

April 3, 2014, 6:30 pm – 8:00 pm

Blackstone Town Hall, John Eldridge Room, 15 St. Paul St., Blackstone



# Commonwealth of Massachusetts

Governor

**Deval L. Patrick**

Energy and Environmental Secretary

**Richard K. Sullivan, Jr.**

Department of Conservation and Recreation Commissioner

**John P. Murray**



## DCR Mission Statement

*To protect, promote and enhance  
our commonwealth of natural,  
cultural and recreational resources  
for the well-being of all.*

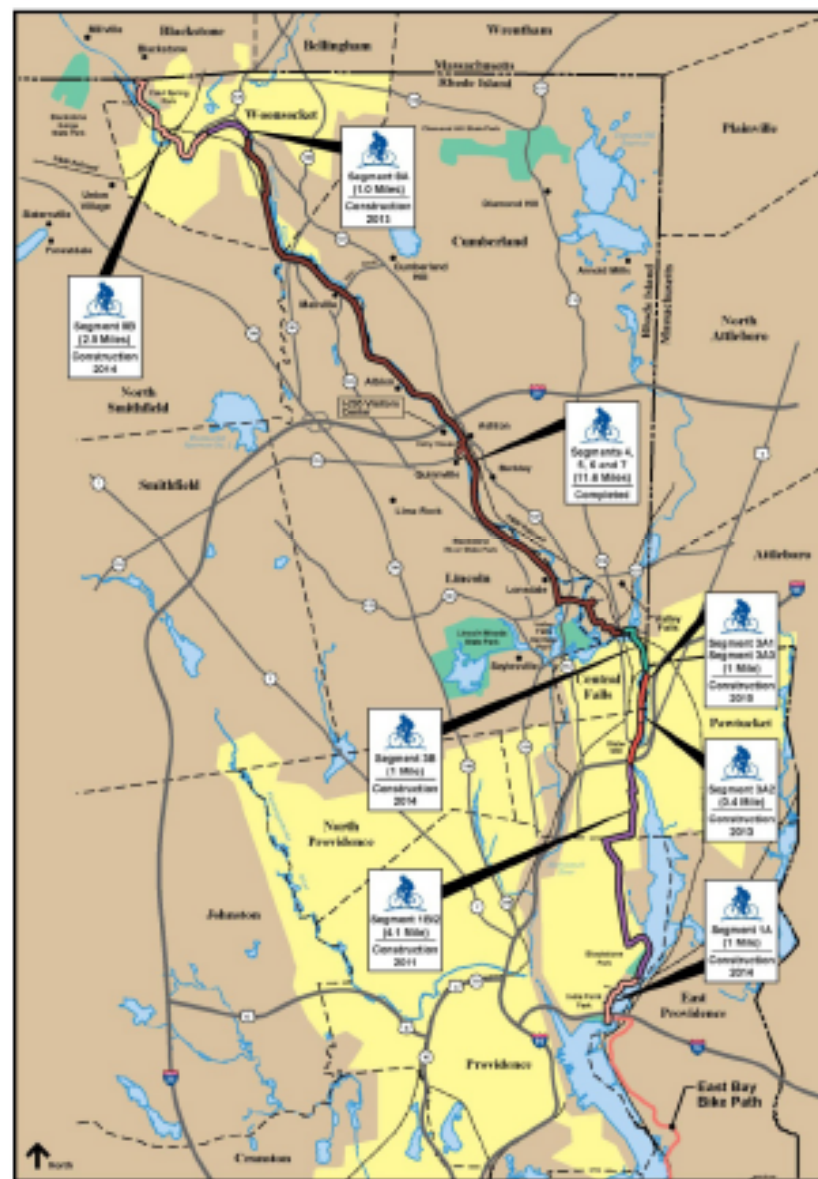
# Blackstone River Greenway

- Vision dates from early 1980's
- Bikeway/greenway from Providence, RI to Worcester, MA
- Major feature of John H. Chafee Blackstone River Valley National Heritage Corridor Commission
- Along the Blackstone River and Canal
- Connecting historic, recreation and natural sites



# Blackstone River Bikeway Rhode Island Section

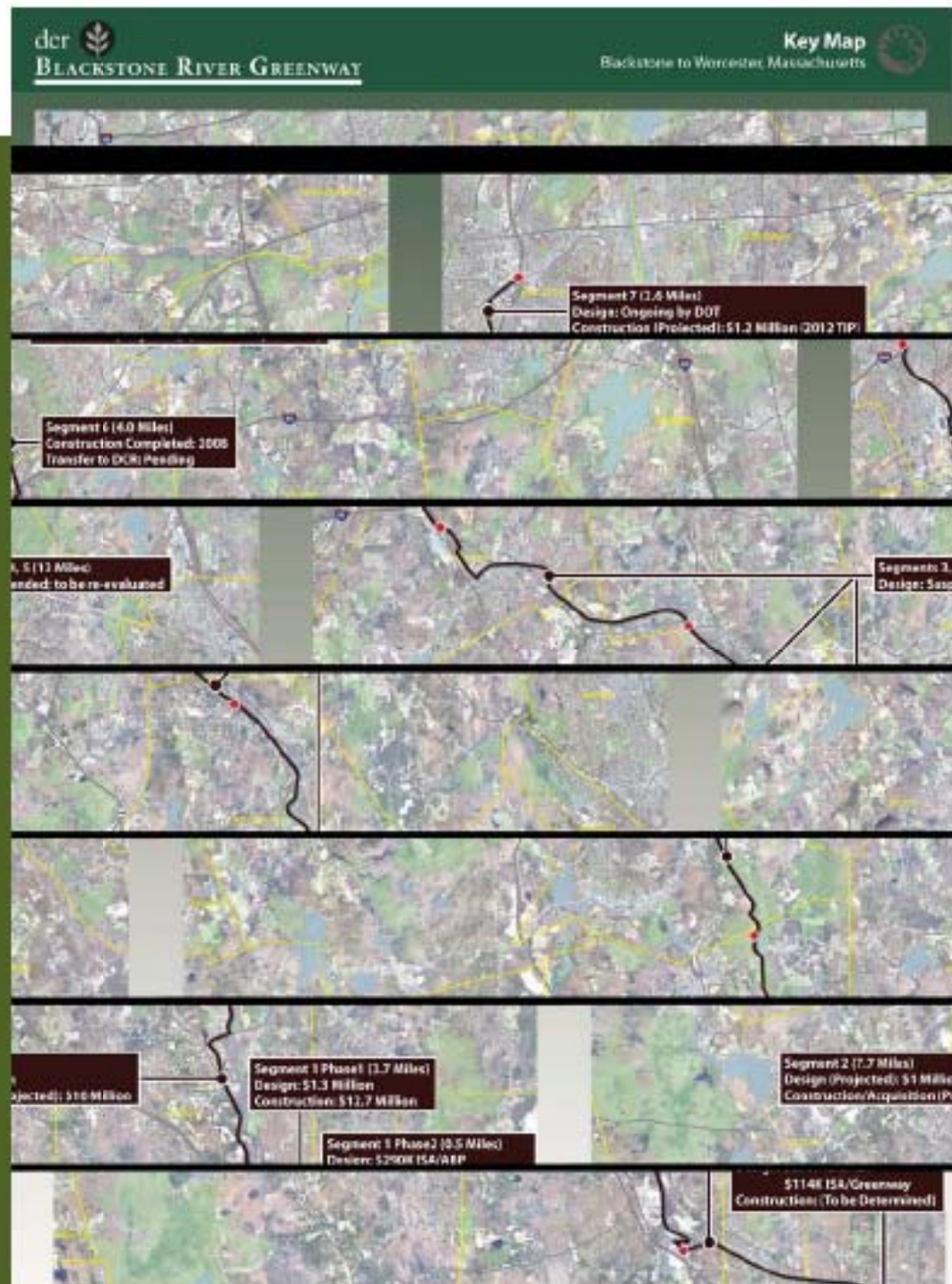
## Blackstone River Bikeway



# Blackstone River Bikeway

- RI Section/RIDEM lead agency
  - 1991 RIDEM completes Planning Study and MOU
  - 1992 Interagency Memorandum (ISA) signed with RIDOT for federal compliance, ROW and construction
  - 1993 initiated bikeway design
  - 1997 1<sup>st</sup> construction contract advertised, 12 construction contracts followed
  - As of 2010, 14 miles built in Rhode Island
  - Initiating final design in Woonsocket to MA line

# Blackstone River Greenway Massachusetts Section

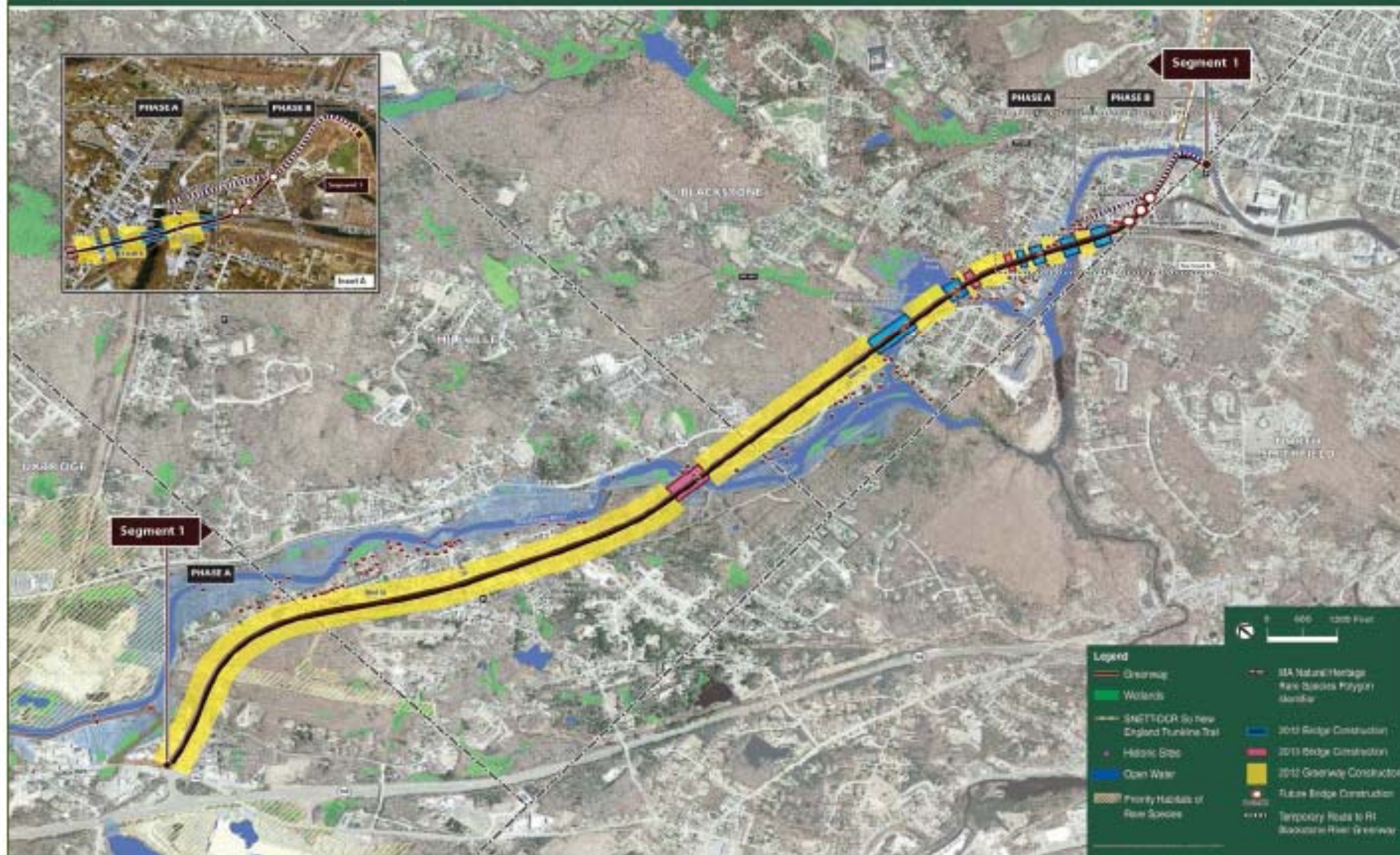


## Blackstone River Greenway (Mass.)

- 1996 Planning Study completed
- 2002 Corridor Commission amends Study
- 2003 Design initiated Segment 2 (Millville, Uxbridge- 7.7 miles)
- 2006 Environmental Impact Report and design initiated Segments 3,4,5 in (Millbury, Sutton, Grafton, Northbridge, Uxbridge – 13 miles )
- 2007 Design initiated Segments 3, 4, 5
- 2008 Segment 6 construction completed (Worcester, Millbury -4 miles)
- 2009 Design suspended, pending future evaluation
- 2009 Project lead and funding transferred from MassDOT to DCR
- 2009 Segment 1 (Blackstone, Millville, Uxbridge ) Design started
- 2011 Segment 1, Phase 1 bridges advertised for construction
- 2012 bridge construction ground breaking 10/11/12
- 2014 Segment 1 Greenway Construction advertised
- 2014 Segment 2 alternative alignment review restarted

## Segment 1

- Project Limits:
  - From the Rhode Island State line to Rte 146A in Uxbridge, for a total length of 4.2 miles
    - Phase A: 3.7 miles (St Paul Street to Rte 146A)
      - Note: Segment 1, Phase A now includes Central Street to Rte 146a (formerly part of Segment 2)
    - Phase B: 0.5 miles (state line to St. Paul Street)
      - Alternative alignments to be evaluated



# Segment 1, Phase B



# Segment 1-Bridge Construction



## Bridges currently under Construction

- St. Paul Street
- Blackstone River
- Kane Court
- Canal Street
- Factory Cove Bridges (2 locations)

# Bridge at St. Paul Street



# Blackstone River



01/17/2014 07:28

# Kane Court



# Canal Street



## Next Construction Project

- Greenway – From St. Paul Street, Blackstone to Adam Street, Uxbridge (3.7 miles)
- Triad Bridge

Projects to be advertised for construction Spring 2014

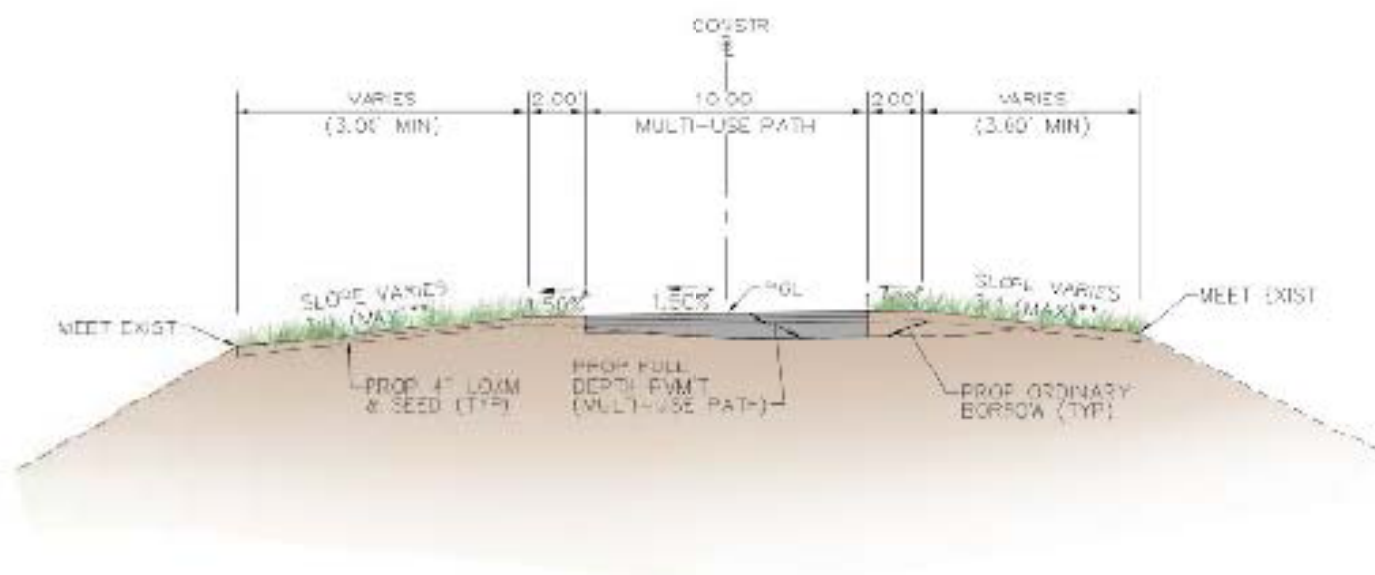
## Project Design

- Classified as a Greenway
- 14 ft wide greenway (10 ft paved with 2 ft shoulders)
- Multi – use path design, ADA compliant
- 14 ft clear width lpe wood bridge decks
- 3 ft clear width from vertical obstructions
- 42 inch wooden railings
- Parking areas at the Depot, Central Street and Old Mendon Street
- Design will include landscape and interpretive elements

# Greenway North of Central St



# Greenway Design



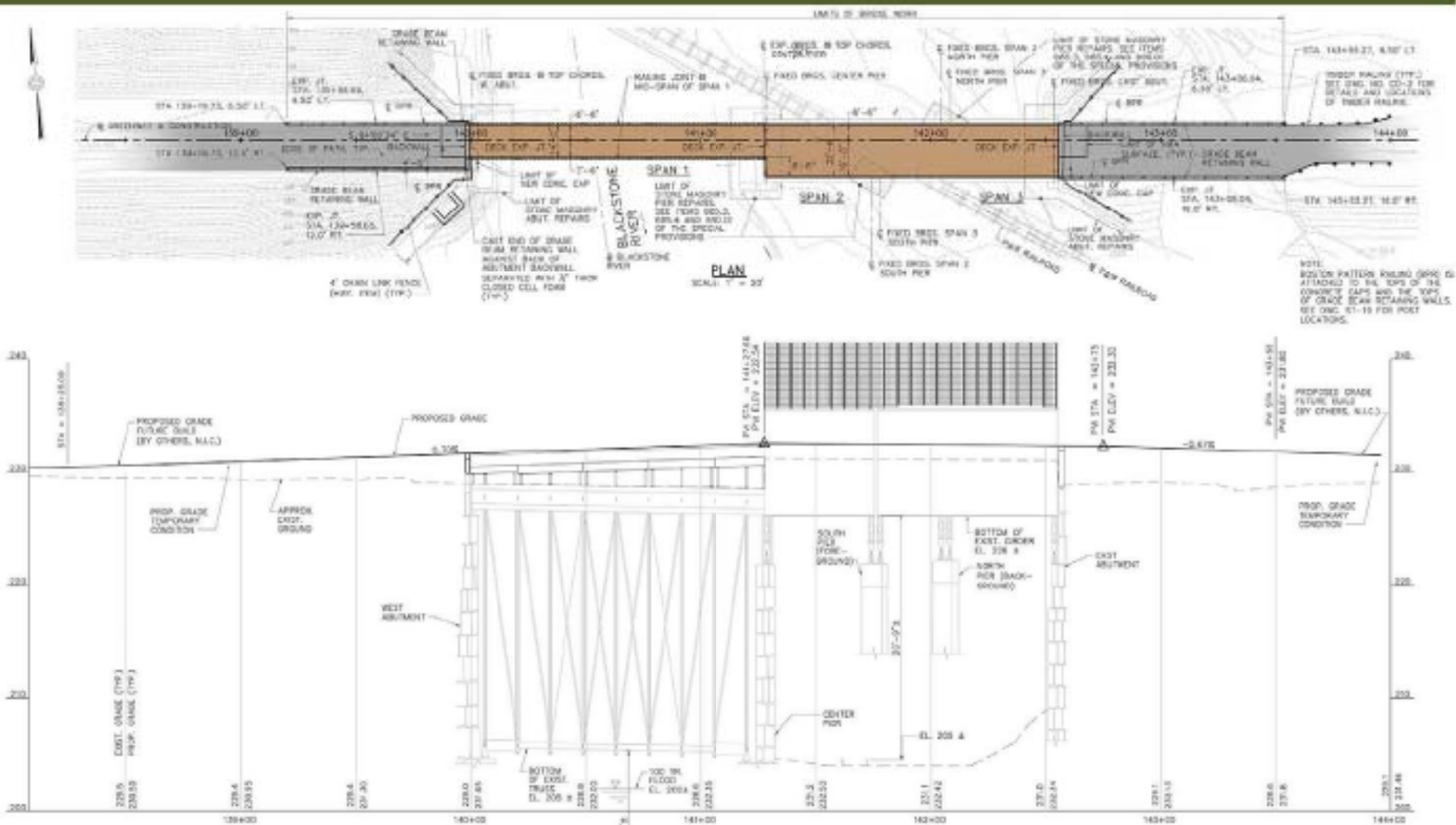
# Triad Bridge - Existing Conditions



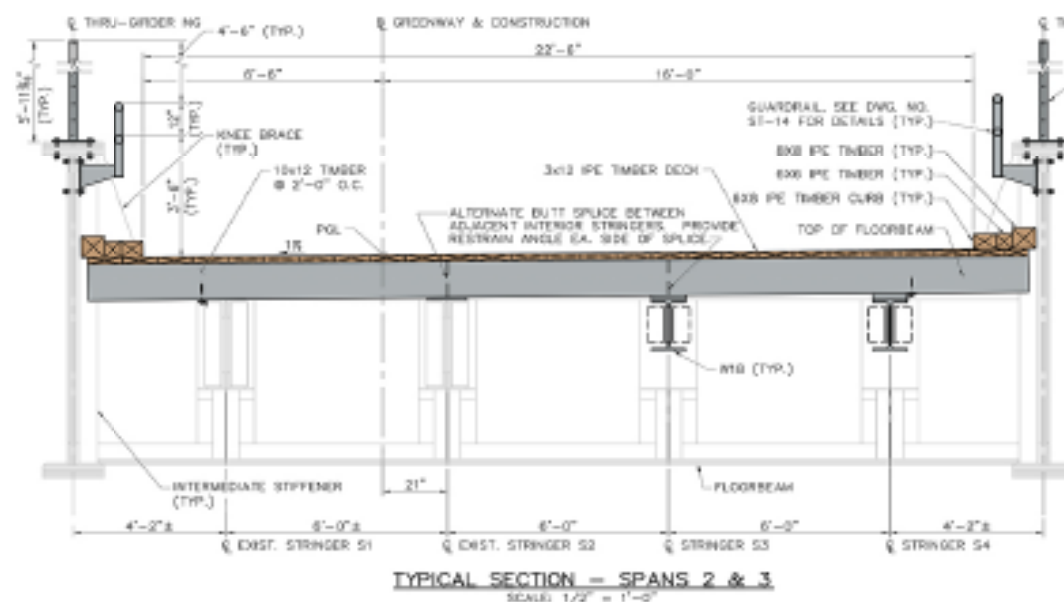
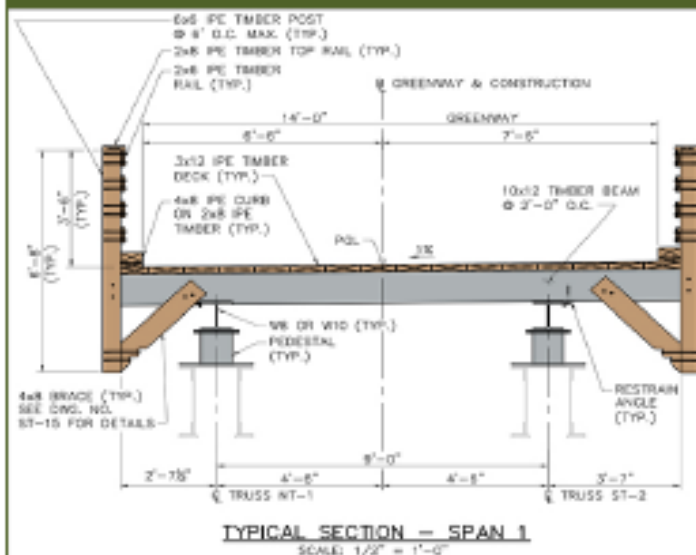
# Triad Bridge – Existing Conditions



# Triad Bridge – Proposed Conditions



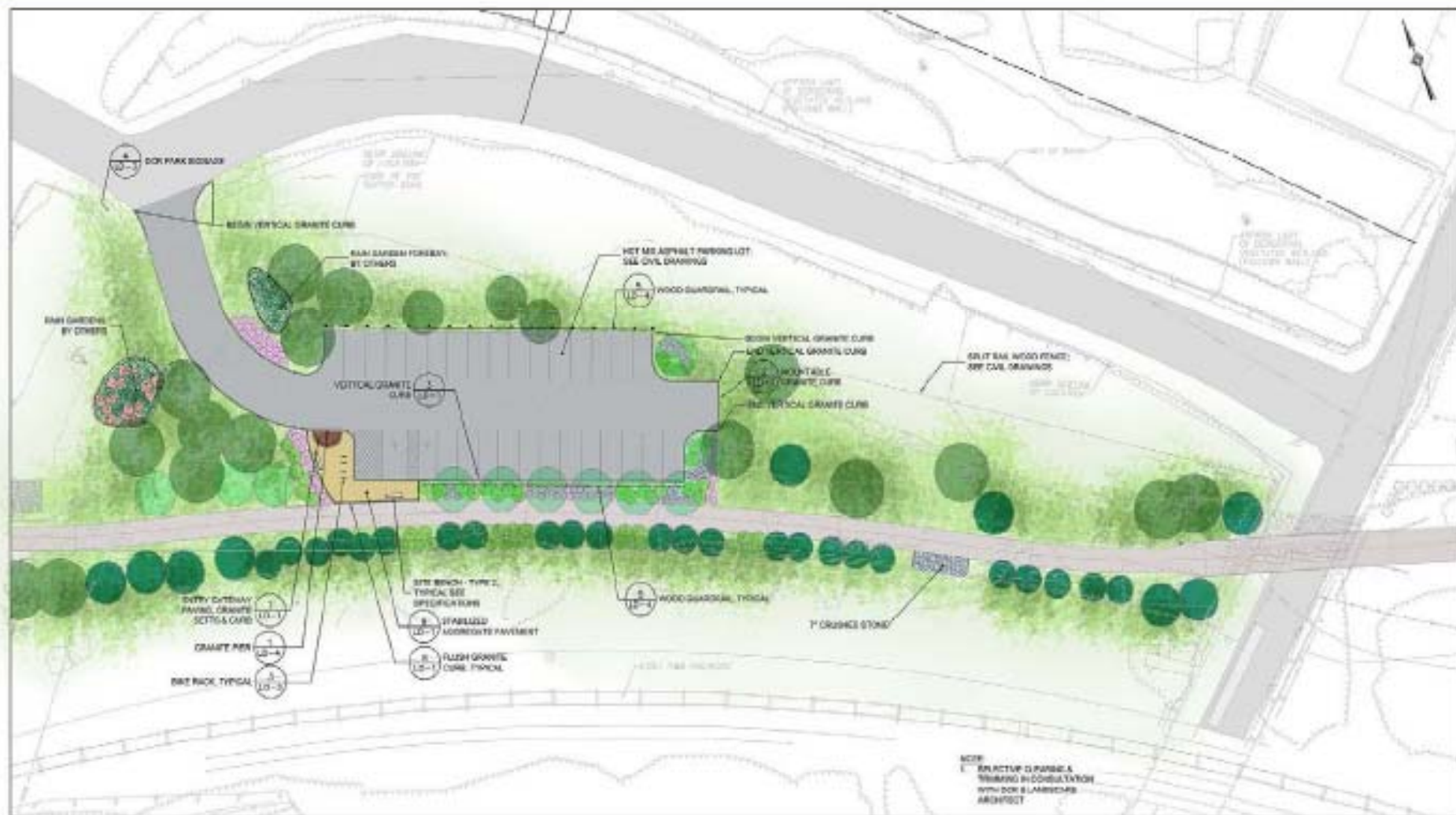
# Triad Bridge Proposed Conditions



# The Depot – Existing Conditions



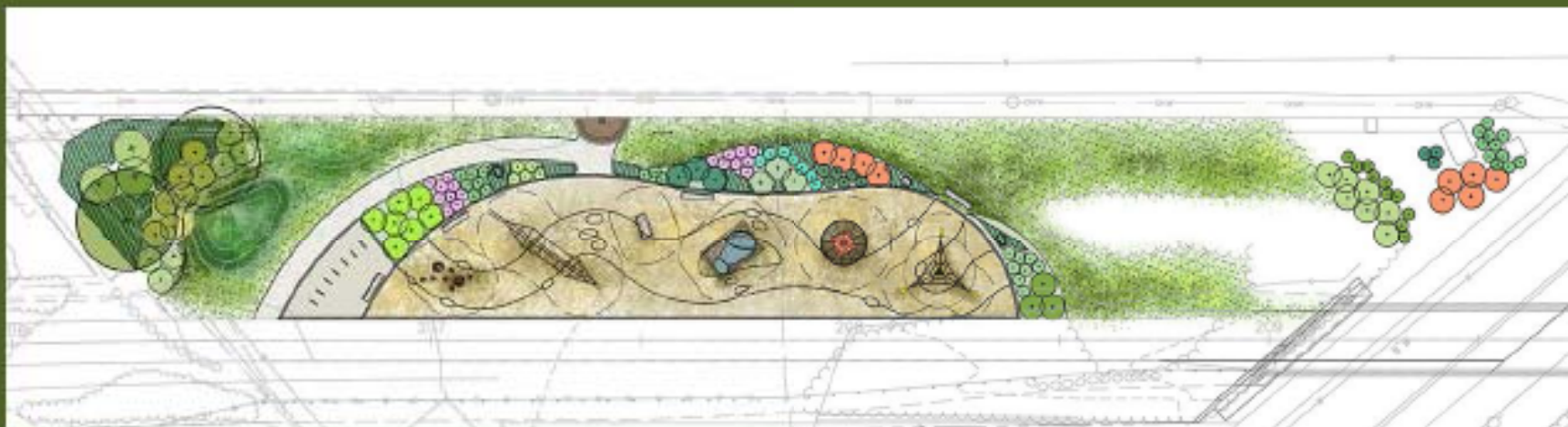
# The Depot - Proposed Conditions



# Mendon Street - Existing Conditions



# Mendon Street – Proposed Conditions



# Play Station at Mendon Street



# Mendon Street – Play Space

## Explorer Arch · COR8823



**Best user age:** 5–12

**Space required:**

16'7" x 32'2"  
(506 x 980 cm)

**Highest designated  
play surface:**

7'5" (225 cm)



# Central Street - Existing Conditions





# Adams Street - Existing Conditions





## Next Project Construction Phase

- Main Street Bridge and Church Street Underpass
  - Construction advertisement Summer 2014
  - Construction to start Fall 2014

## Project Construction Costs

- Greenway costs: \$4,120,000
- Triad Bridge Costs: \$1,560,000

TOTAL COST: \$5,680,000

## Funding sources

- Committed Design and Construction Funds
  - Up to \$15 million for bridges through Accelerated Bridge Program
  - \$4,850,000 (via ISA from MassDOT to DCR) committed to Segment 1 and 2 design and Segment 1 greenway construction
  - Costs and Funding for Segment 1 ph 2 to be determined

## Additional Information

- For more information:
  - Web: <http://www.mass.gov/eea/agencies/dcr/public-outreach/public-meetings/>
- If you have comments or suggestions:
  - Email: [dcr.updates@state.ma.us](mailto:dcr.updates@state.ma.us), noting 'Blackstone Greenway' in the subject line, or
  - Write: DCR Office of Public Outreach,  
251 Causeway Street, 6<sup>th</sup> Floor, Boston, MA 02114

If you have questions, concerns, or would like to be added to an email list to receive DCR project-specific or general announcements, please email [mass.parks@state.ma.us](mailto:mass.parks@state.ma.us) or call 617-626-4973, noting which list to which you wish to be added.

Questions?