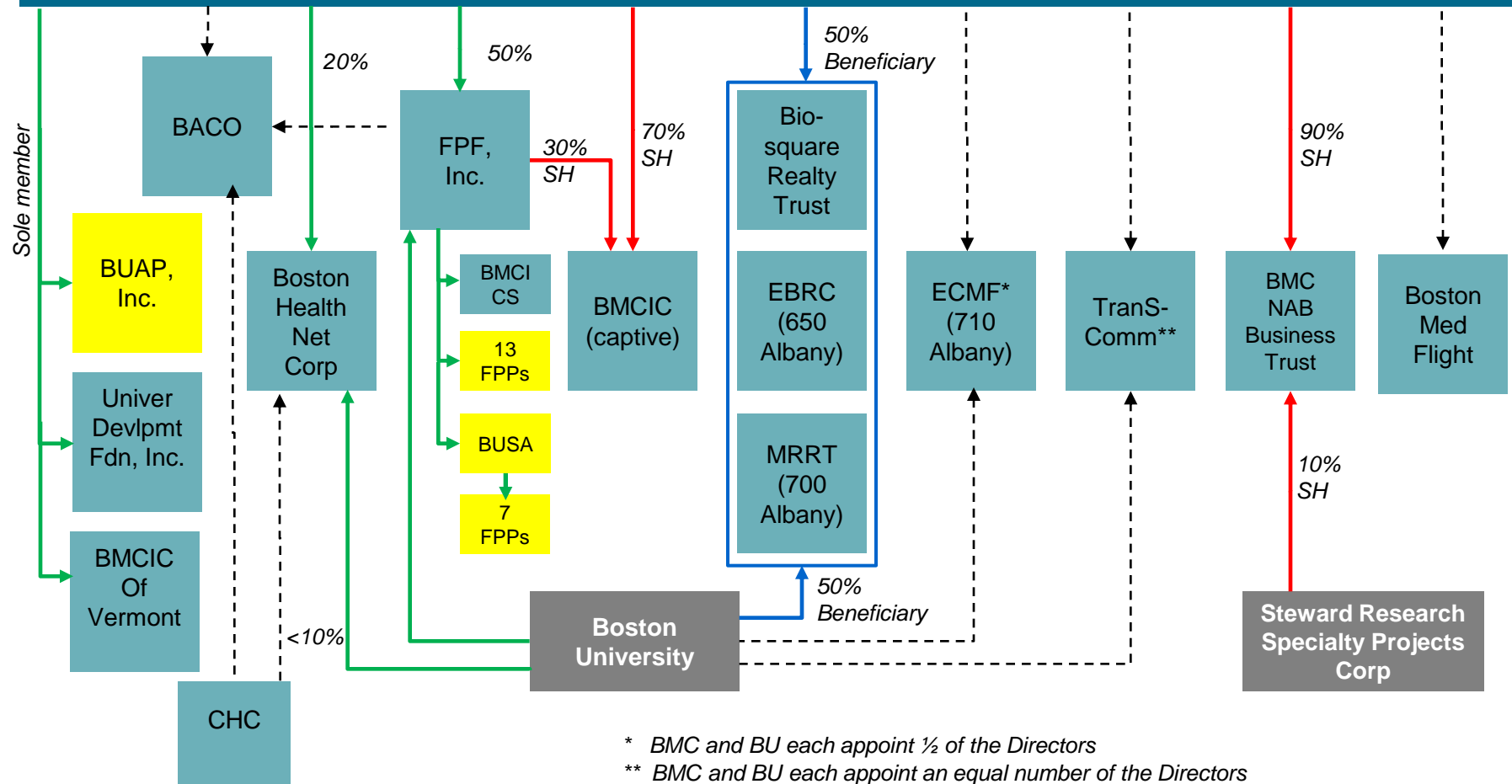


# BMC HEALTH SYSTEM, INC.

— Member  
 — Shareholder  
 — Clinical  
 — Beneficiary  
 - - - Other

Boston Medical Center Health Plan, Inc.

## Boston Medical Center Corporation



\* BMC and BU each appoint ½ of the Directors

\*\* BMC and BU each appoint an equal number of the Directors



# BOSTON MEDICAL CENTER CORPORATION

— Member  
— Shareholder  
— FPPs  
— Beneficiary  
- - - Other

## Faculty Practice Foundation, Inc. (FPF, Inc)

BMC  
MSO

BUSA

### 13 FPPs

Boston Emergency  
Physician Foundation,  
Inc.

Boston University  
Dermatology, Inc.

Boston University  
Eye Associates,  
Inc.

Boston University  
Family Medicine, Inc.

Boston University  
Mallory Pathology  
Associates, Inc.

Boston University  
Neurology  
Associates

Boston University  
Obstetrics and  
Gynecology  
Foundation, Inc.

Boston University  
Psychiatry  
Associates, Inc.

Boston University  
Medical Center  
Radiologist, Inc.

Child Health  
Foundation of  
Boston, Inc.

Evans Medical  
Foundation, Inc.

Boston University  
Medical Center  
Anesthesiologist,  
Inc.

Boston Rehabilitation  
Medicine Associates,  
Inc.

### 7 FPPs

FPP  
Boston University Cardiac and Thoracic  
Surgical Foundation, Inc.

FPP  
Boston University General Surgical  
Associates, Inc.

FPP  
Boston University Medical Center  
Urologist, Inc.

FPP  
Boston University Neurosurgical  
Associates, Inc.

FPP  
Boston University Orthopaedic Surgical  
Associates, Inc.

FPP  
BUMC Otolaryngologic Foundation, Inc.

FPP  
Boston University Plastic Surgery  
Associates, Inc.

\* BMC and BU each appoint ½ of the Directors

\*\* BMC and BU each appoint an equal number of the Directors