

Boston (Teachers)

Contact Information

See Boston (City)

System Members

Active Members 6,689
Total Payroll \$763.8 M
Average Salary \$114,200
Average Age 44
Average Service Years 10.7

Retired Members 4,780
Benefits Paid \$277.7 M
Average Benefit \$58,100
Average Age 75

Last Valuation

1/1/24

Actuary

PERAC

Notes on Boston (City) & Boston (Teachers)

The results for Boston Teachers and non-teachers (City) are separated in this report.

The liability for Boston Teachers has always been the responsibility of the Commonwealth.

In 2010, legislation was enacted that allocated assets to Boston (Teachers) and separate accounts have been maintained since that date. The actuarial information for the City now solely reflects liability that is the responsibility of the City.

The Funded Ratio chart for the City reflects information available since that allocation.

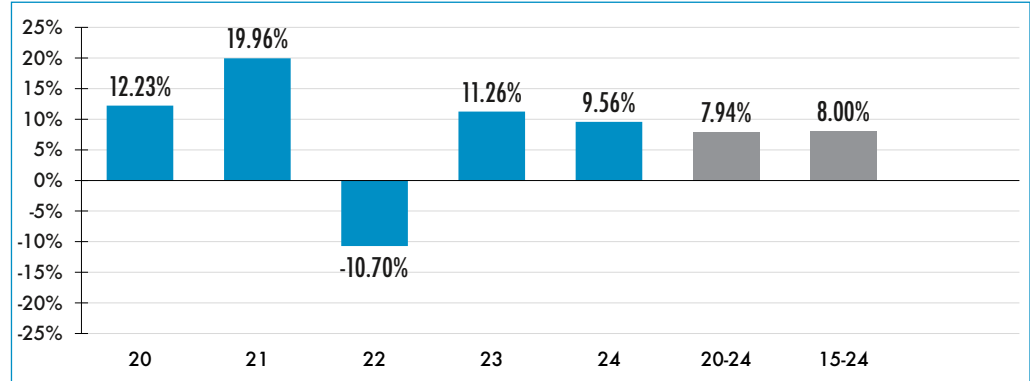
Please note the following when reviewing the charts on these pages:

- Boston Teachers' assets prior to 2010 were estimated as approximately 30% of Boston (System) total assets.
- The information with respect to Disability Retirees on the City Board Profile page reflects the entire system, including Boston Teachers.
- The information with respect to Investment Return History for the City reflects actual returns for Boston (City) for 2019-2023 and total returns for the Boston System prior to 2011.

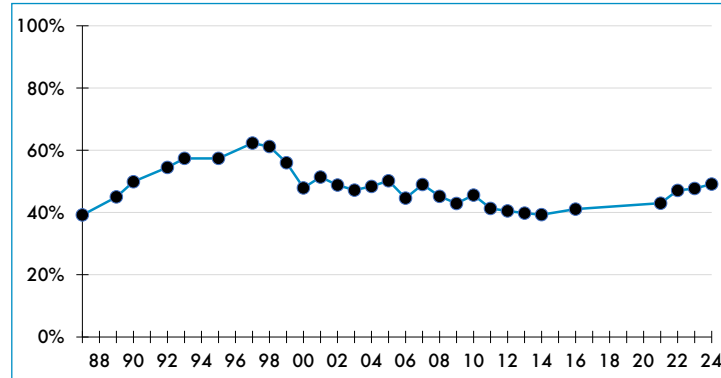
Featured Data

Market Value	2024 Returns	Assumed Rate of Return	COLA Base (FY 2026)	Funded Ratio
\$ 2.7 B	9.56%	7.00%	\$15,000	49.1%

Investment Returns (2020-2024; 5, & 10 Year Averages)



Funded Ratio History (1987-2024)



Board Funding

Unfunded Liability
\$ 2.5 B
Fully Funded
2036
Funding Schedule
9.63% Increasing Phase In
Total Pension Appropriation
\$ 299.6 M (FY 2025)

Asset Allocation

