

SUBDIVISION PLAN OF LAND IN BOURNE
Nelson Bearse-Richard Law, Surveyors

24204C

January 5, 1966

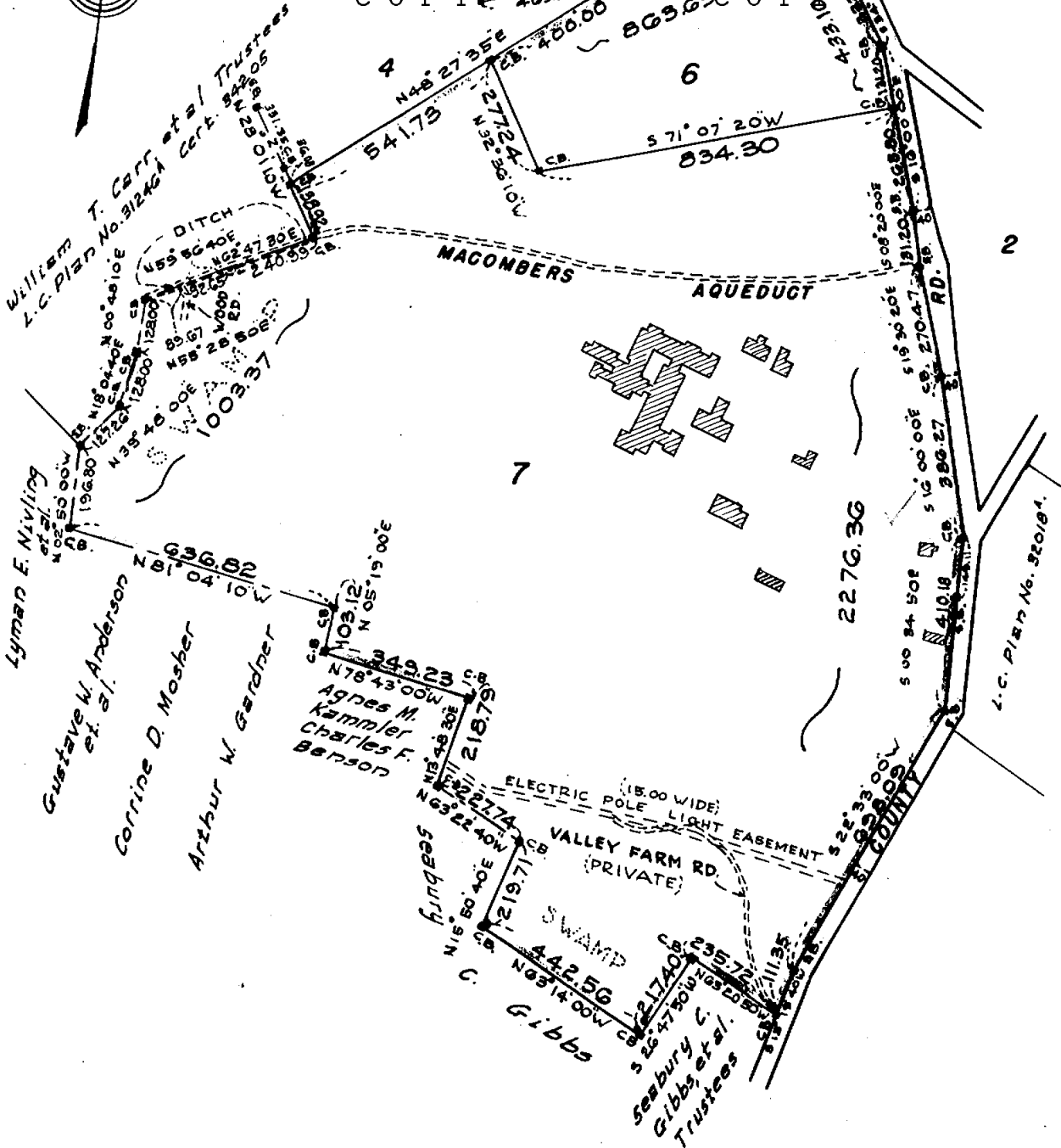
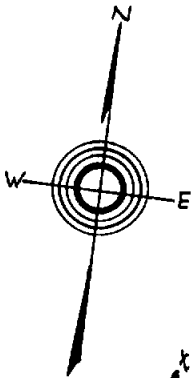
NOT

AN OFFICIAL COPY

OFFICIAL COPY

William T. Carr et al. Trustees
L.C. Plan No. 3124GA Cert. 34206

OFFICIAL COPY



Subdivision of Lot B5
Shown on Plan 24204
Filed with Cert. of Title No. 18176
Registry District of Barnstable County

Separate certificates of title may be issued for land
shown hereon as...
By the Court.

Copy of part of plan
filed in
LAND REGISTRATION OFFICE
FEBRUARY 24, 1966
Scale of this plan 300 feet to an inch
C.M. Anderson, Engineer for Court 12.

FEBRUARY 24, 1966
Margaret M. Daly
Recorder