



# **BRA Request for Concurrence: Section 4(f) *De Minimis* Determination Bourne Scenic Park and Gallo Ice Arena**

## *Cape Cod Bridges*

April 30, 2026

Project File No. 608020





# Coordination with BRA

# MassDOT and BRA Coordination to Develop Mitigation and Enhancement Measures

Meeting/Coordination Date	Description
March 16, 2023	Introductory meeting with BRA to share Program conceptual level information, Bourne Scenic Park operations, and BRA priorities.
July 15, 2024	Overview of Section 4(f). Review of concept plans for the Bourne Scenic Park entrance location.
August 30, 2024	BRA provided Priority List Memorandum to MassDOT.
September 12, 2024	Continuation of July 15, 2024, meeting. Site walk to review park facilities. Discussion of BRA's priorities for facilities to be retained, replaced, or compensated, resulting from use.
February 28, 2025	Review of concept plans for Bourne Scenic Park entrance mitigation and east side park expansion.
May 8, 2025	BRA provided Letter with List of Mitigation Measures to MassDOT.
June 16, 2025	Continued review of MassDOT's feasibility assessment for potential mitigation and enhancement measures.
August 13, 2025	Working session to review minimization, mitigation, and enhancement measures to avoid adverse effects.



# Bourne Scenic Park Mitigation and Enhancement Measures

# Bourne Scenic Park – Overall Site Improvements

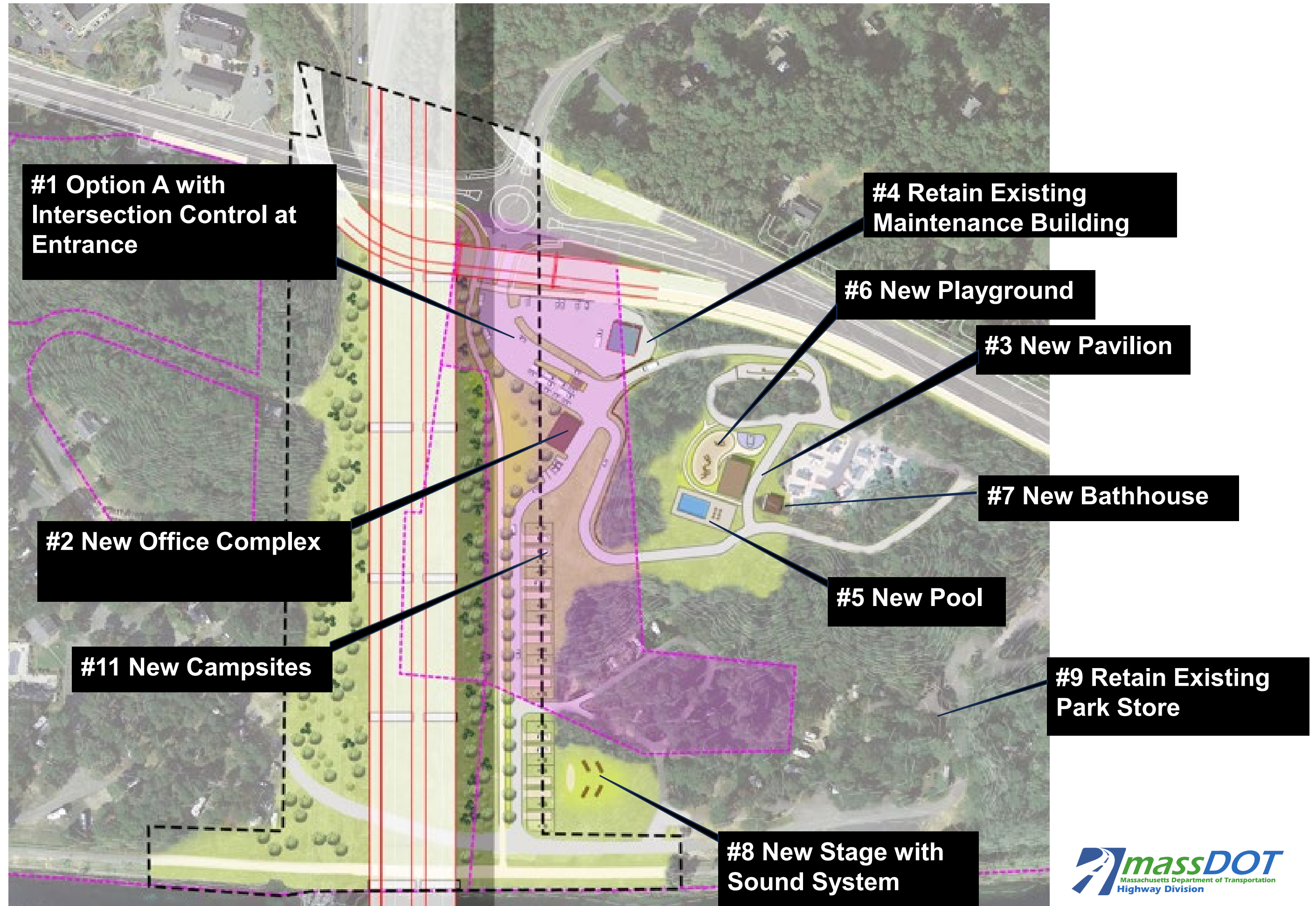


*Preliminary Illustration – For Internal Deliberation*



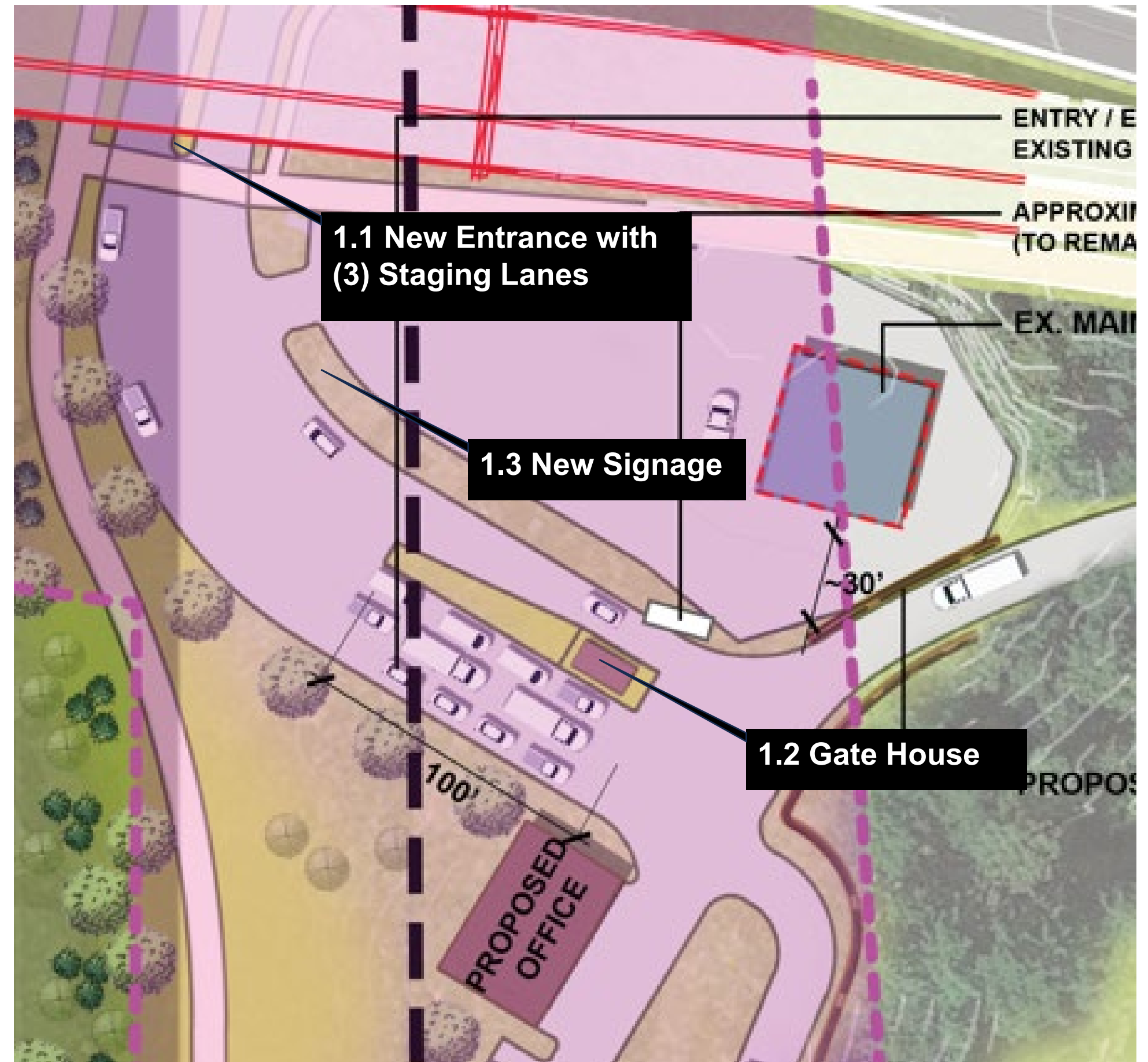
# Bourne Scenic Park East Side Improvements

# Bourne Scenic Park East Side Entrance & Improvements



# #1 Replacement Entrance: Option A with Intersection Control at Entrance

- ✓ 1.1 Entrance & Exit lanes with (3) 150' Staging lanes.
- ✓ 1.2 Gate House.
- ✓ 1.3 New Signage.

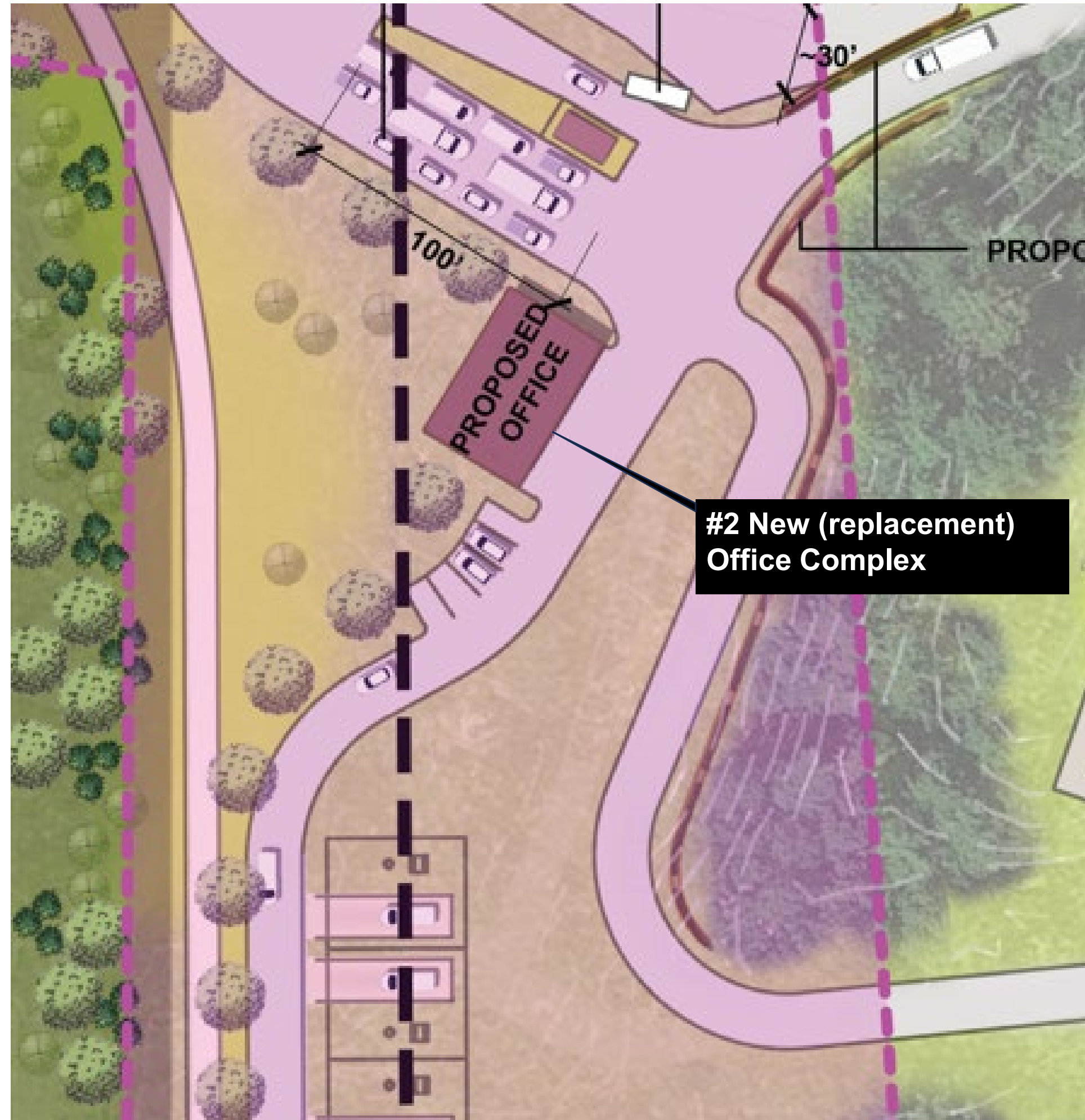


## #2 Office Complex

- ✓ New Two-story, 4,800 GSF wood frame Office. Floor plan and amenities to be coordinated with BRA
- ✓ Camper Check-in counter with 2-3 stations.
- ✓ Administrative Offices.
- ✓ Recreation Office.



Existing BRA Office Complex



## #3 Pavilion/Recreation Hall

New 65'x45' glue-laminated Frame Pavilion and Enclosed Game Room. Game room equipment to be relocated from existing structure.

- ✓ Game room. ***Included in Recreation Hall***
- ✓ Arts & Crafts room. ***Dual purpose space***



***Conceptual Pavilion for Illustrative Purposes***

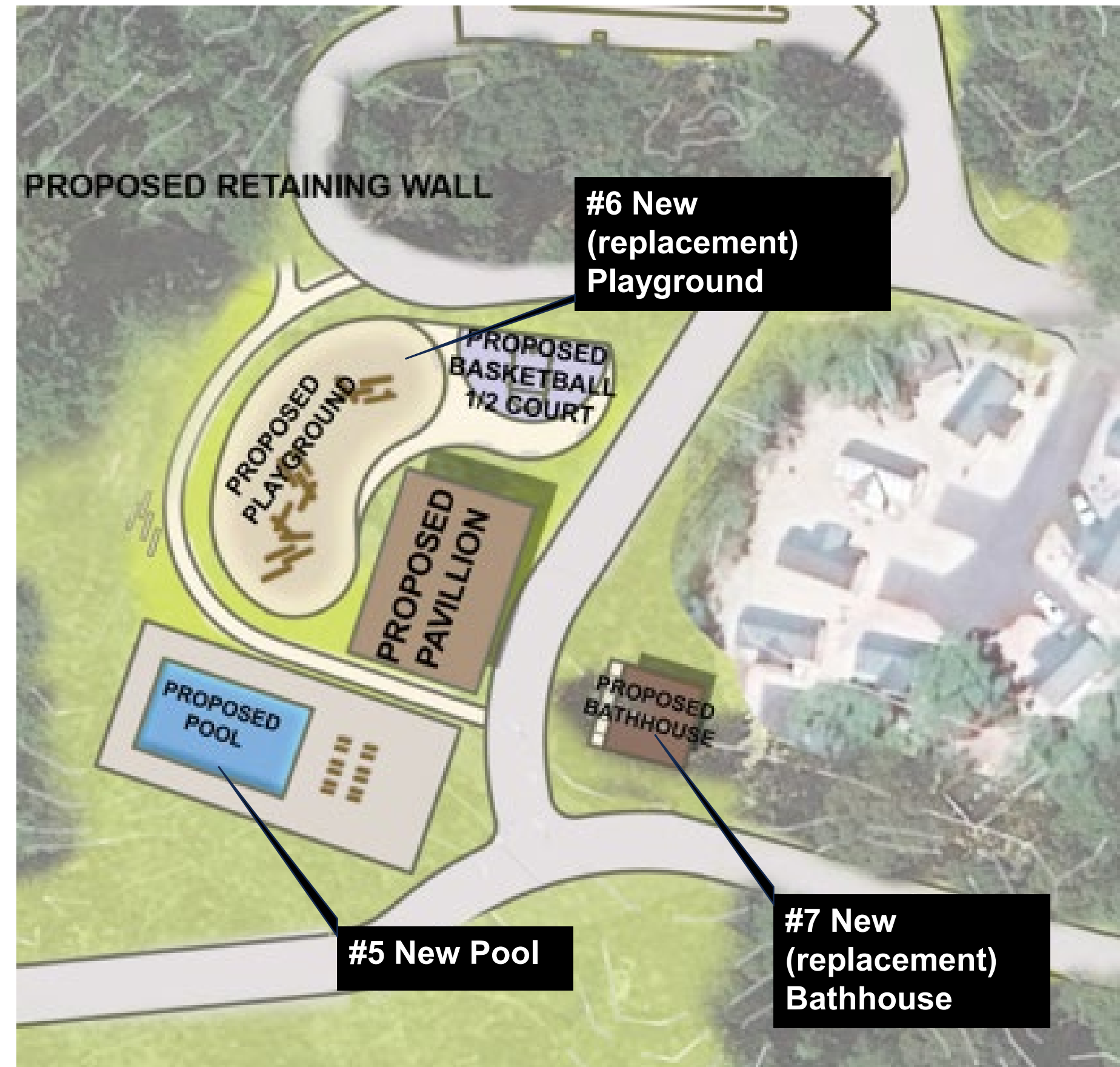


## #5, 6 and 7 New Pool, Playground and Bathhouse (G-Area)

- ✓ New 30'x50'x4' fiberglass in-ground pool within 100'x50' concrete pool deck (G-Area).
- ✓ New playground to include one large climbing structure designed for 5–12-year-old children and one medium climbing structure for 2–5-year-old structure and one swing with (6) swings (G-Area).



*Illustrative Playground Concepts*



## #7 Bathhouse for G-Area (Replacement) and C-Area (New)

- ✓ New 850 GSF reinforced CMU structure with floorplan and bathroom stall/shower configuration to be coordinated with BRA.



*Curlew Comfort Station – Myles Standish State Forest*



*Illustrative Concept Shower Building*

## #8 New Stage with Sound System

- ✓ New stage with sound system to be located near canal (G-Area)



*Conceptual stage with sound system*



#8 New Stage with Sound System

# Bourne Scenic Park East Side: Easterly Expansion Enlarged



- ✓ #7C New Bathhouse for C-Area
- ✓ #11 New Campsites C-Area to include water and electric hookups
- ✓ #12 New Playground C-Area – Refer to #6

### PROPOSED AMENITIES

- 42 MAXIMUM POTENTIAL RV CAMPSITES
  - (22) - 60' LENGTH RV CAMPSITES
  - (20) - 35' LENGTH RV CAMPSITES
- 1 PROPOSED BATH HOUSE
- 1 PROPOSED PLAYGROUND

← → PROPOSED PEDESTRIAN CONNECTION

### LEGEND

-  PROPOSED BATH HOUSE (500' RADIUS)
-  EXISTING BATH HOUSE (500' RADIUS)



# Bourne Scenic Park East Side: Easterly Expansion Enlarged



## Bourne Scenic Park Measures to Minimize Harm

### ✓ 13. Roadway Reconfiguration & Paving.

- Construct all roadway work necessary to implement improvements
- Repave all roadways impacted by construction activities to construct the Bourne Crossing.

### ✓ 14. Positive Drainage Accommodations.

- Positive drainage accommodations will be made to areas impacted by the proposed work, adhering to campground standards.

### ✓ 15. Replacement of Impacted/New Electricity & Wi-Fi Infrastructure.

- Replace existing electrical and Wi-Fi infrastructure impacted during the construction of the Bourne Crossing.
- Provide new electrical and Wi-Fi infrastructure within the Easterly expansion (C-Area).



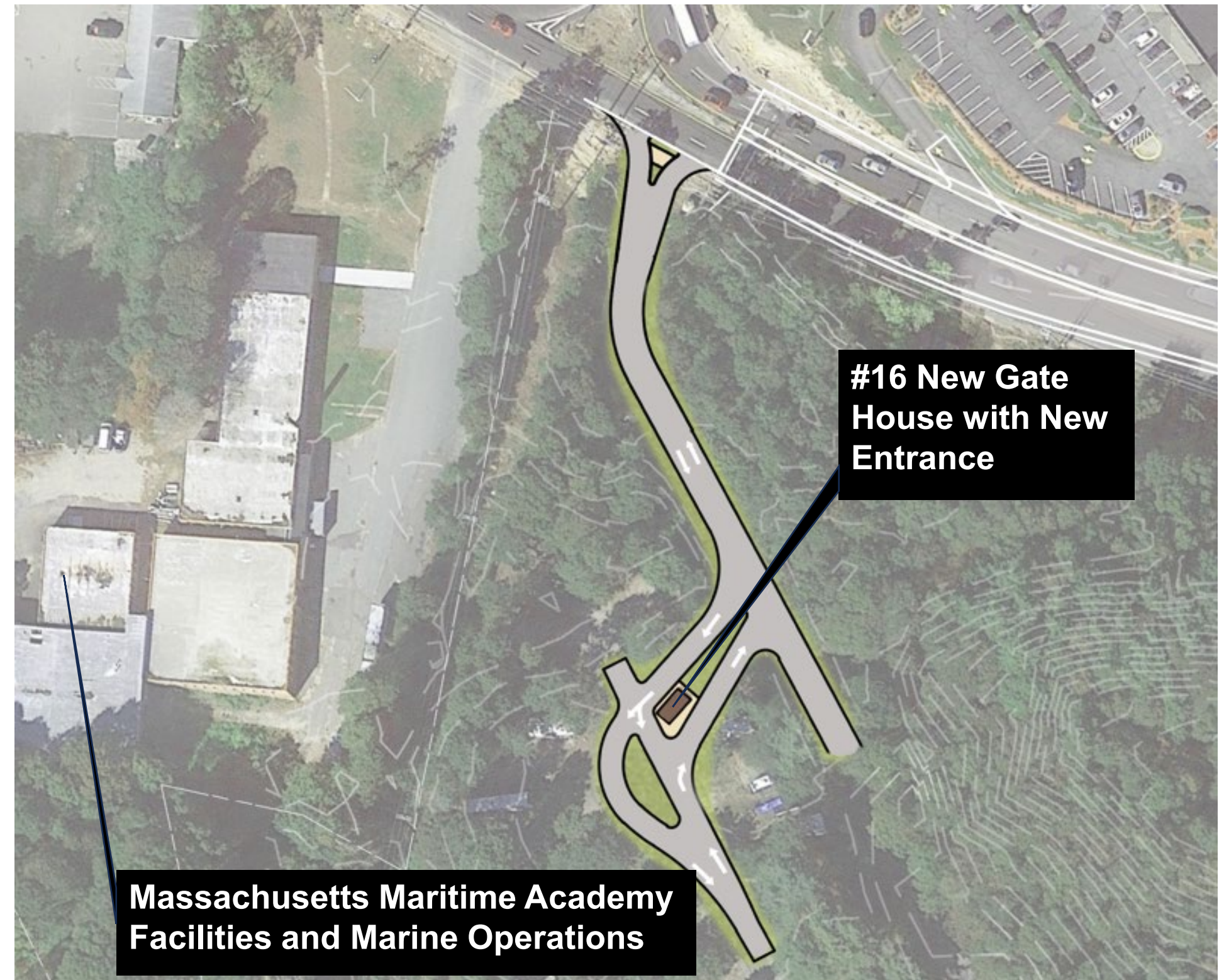
*Existing Wi-Fi infrastructure*



# Bourne Scenic Park West Side Improvements

## #16 New Entrance/Exit to Scenic Highway and New Gate House

- ✓ **Right-In-Right-Out Entrance:** A new entrance to Route 6-Scenic Highway will be constructed.
- ✓ **Roadway Improvements:** Full-depth roadway reconstruction and resurfacing will be undertaken.
- ✓ **New Gate House:** A new gate house will be provided.
- ✓ **West Side Enhancements:** A new entrance to the P/PX-Area along the West Side will be established.

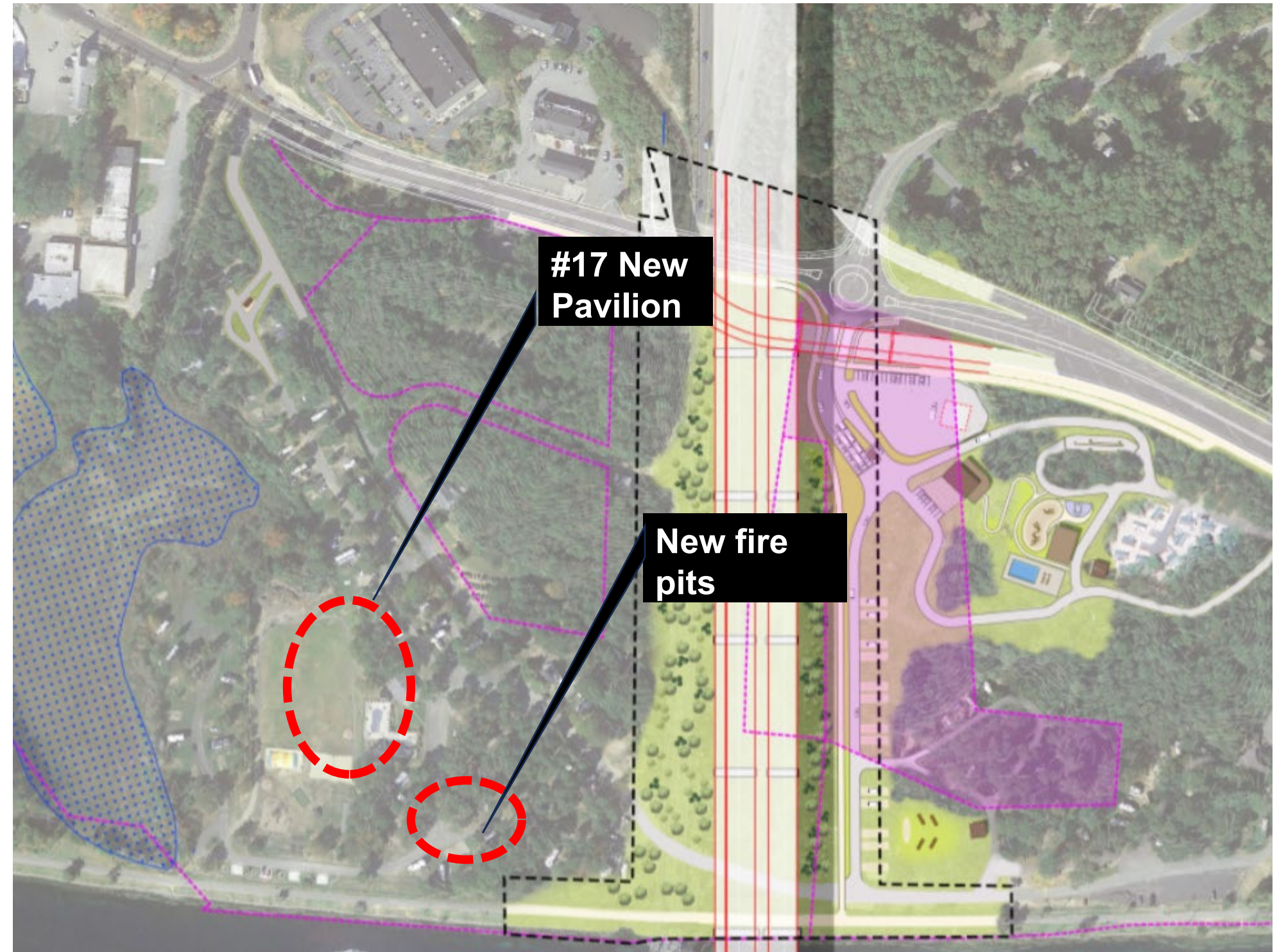


# #17 New Pavilion

- ✓ New glulam Frame Pavilion in P & PX-Areas (Refer to #3).
- ✓ New Fire Pits in P-Area and PX-Area



*Conceptual Pavilion for Illustrative Purposes*

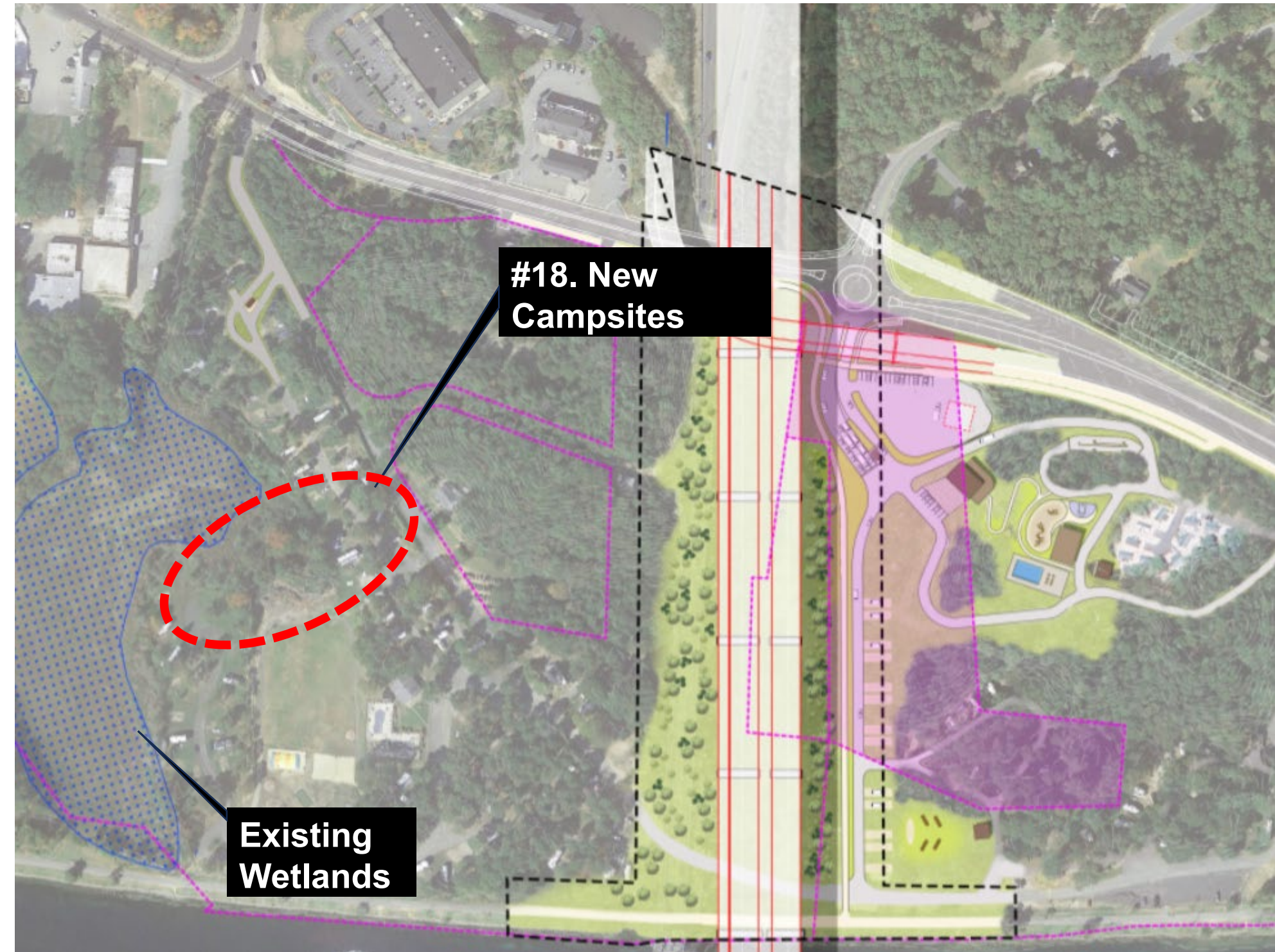


## Bourne Scenic Park - West Side

### ✓ 18. New Campsites.

11 new campsites in P- and PX-Area, to be sited to avoid existing wetlands.

- Includes water and electrical service hookups
- Includes new loop road linking P-Area and PX-Area





# Gallo Ice Arena Minimization and Mitigation Measures

## Sandwich Road Improvements: Minimization and Mitigation Measures



- Construct reconfigured site driveways
- Reconfigure and reinstall three facility entrance signs
- Conduct operations and maintenance from Sandwich Road with no effect to Gallo Ice Arena.

# Illustrative Concept: USACE Facilities Rebuild at Gallo Ice Arena



*Comfort Station – Bourne, MA*

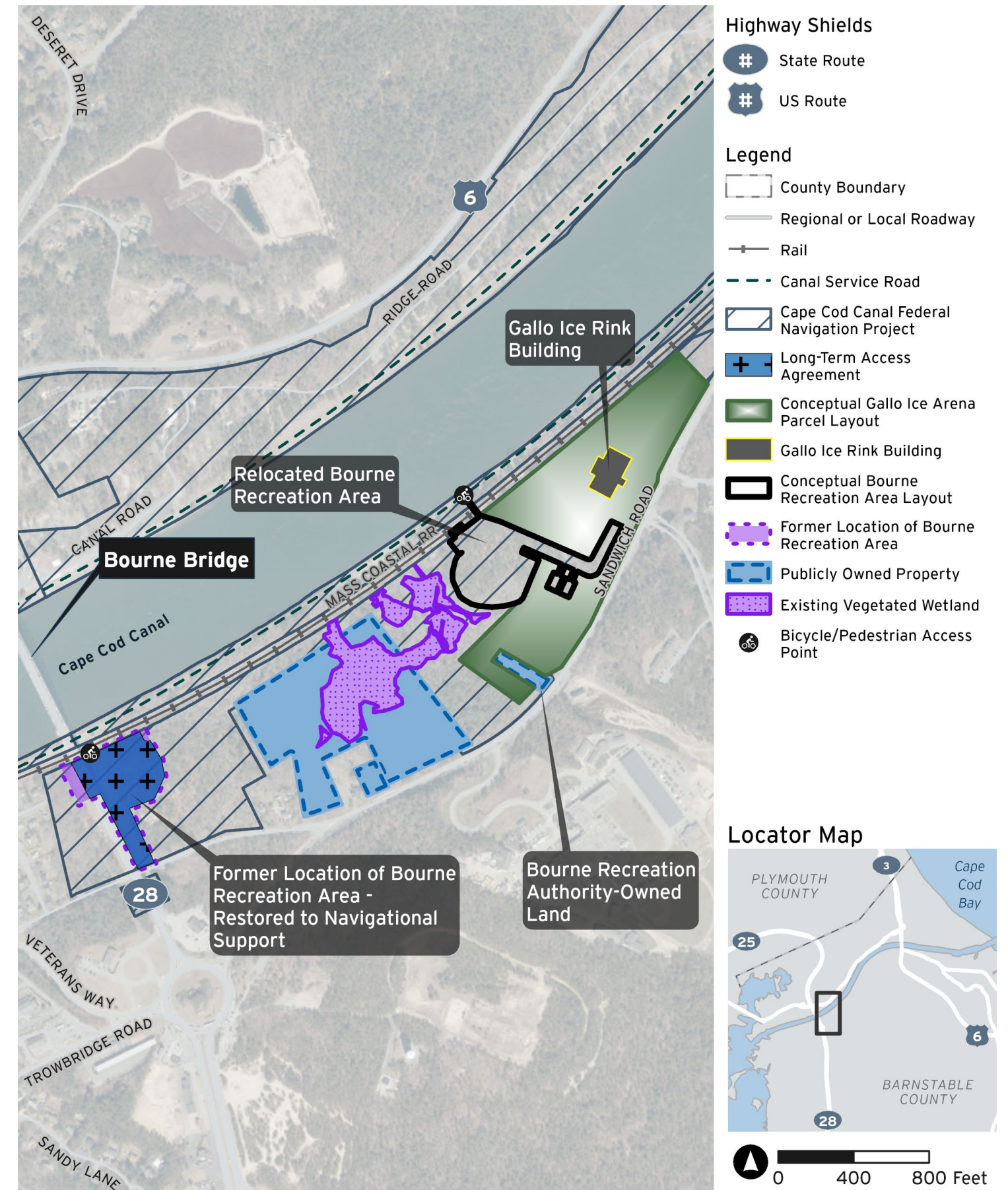
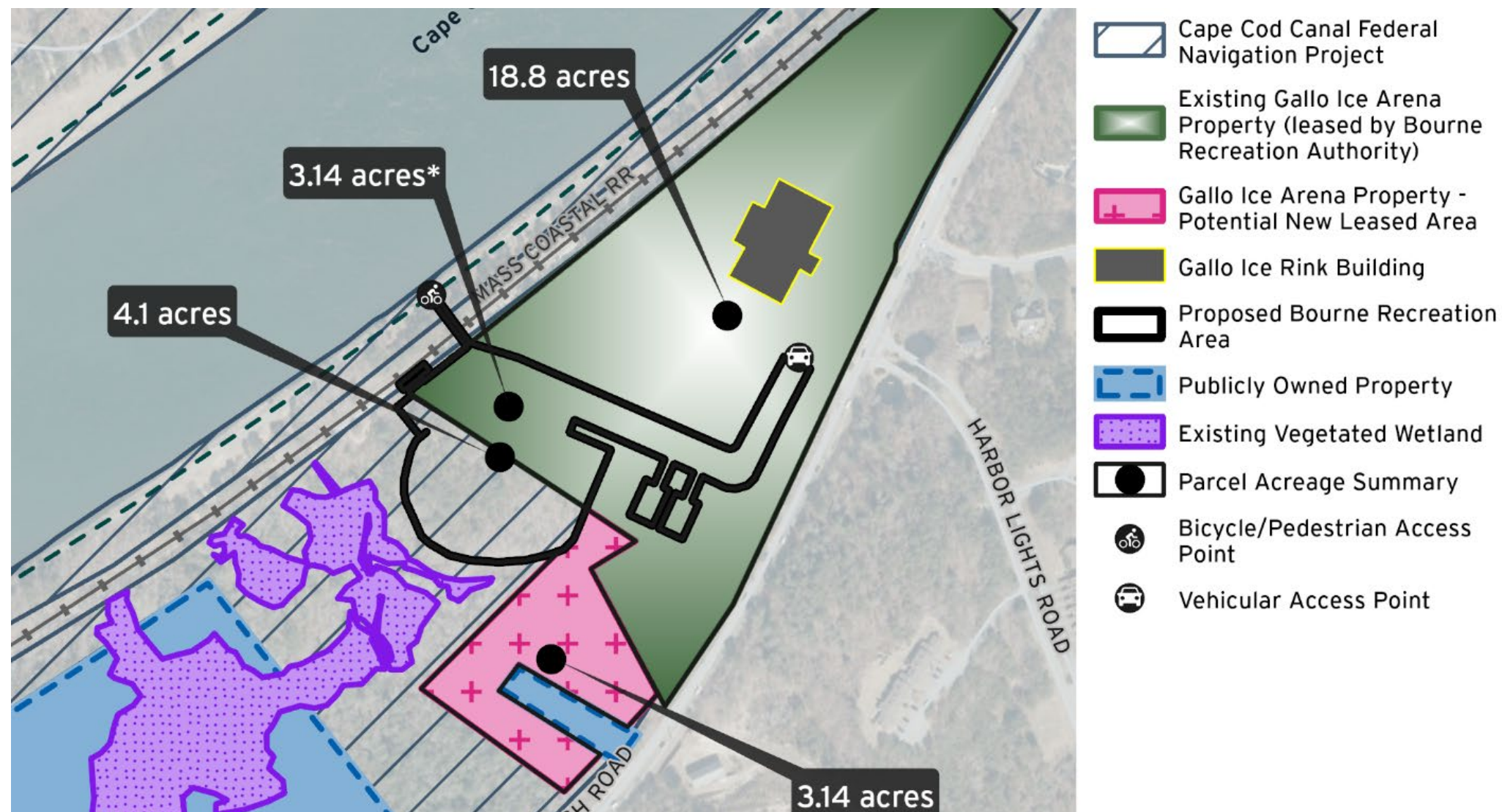


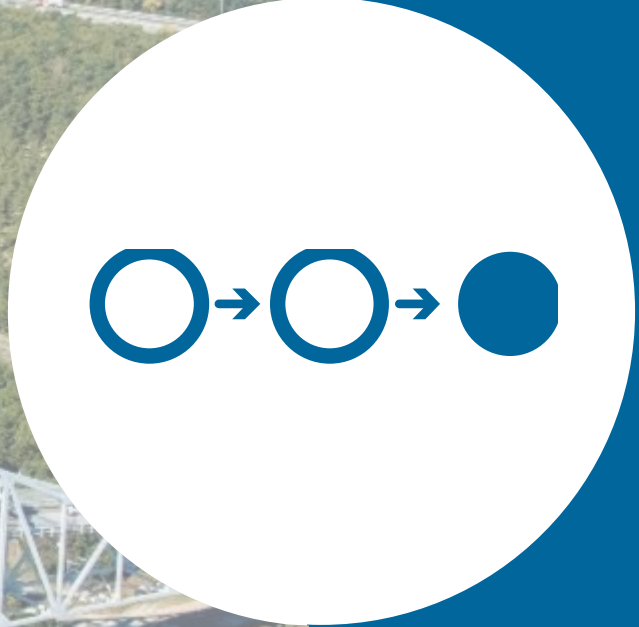
*Conceptual Pavilion for Illustrative Purposes*

# Gallo Ice Arena Measures to Minimize Harm

## Cape Cod Canal FNP Redesignation

- USACE would be responsible for designating an additional 3.14 acres within the Cape Cod Canal FNP as Gallo Ice Arena property to be leased to the BRA, so that there is no change to the total acreage of land used for Gallo Ice Arena.





# Next Steps

## Section 4(f) Next Steps

- **Concurrence:** BRA concurs with *de Minimis* Determination
- **Determination:** FHWA approves Determination
- **Formal Agreement:** MassDOT prepares formal agreement for USACE and BRA to review specific mitigations and betterments contingent upon funding of Bourne Bridge project.
- **Continued Collaboration:** MassDOT, USACE, and BRA advance construction of mitigation measures before Bourne Bridge Construction.





# *Thank You*

## *Cape Cod Bridges Program*

April 30, 2026

Project File No. 608020

