



# Cranberry Highway (Route 28/Route 6) over Agawam River

*Bridge No. W-06-020*

Virtual Public Hearing | Tuesday, April 25, 2023 | 6:30 p.m.

Project File No. 606352





# Zoom Hearing Controls



- Ask a question and share comments



- Raise your hand - \*9 for users dialing in and Alt + Y to raise your hand



- If you are unable to access the internet or are having technical problems, please call into the meeting at [insert number], Webinar ID: [insert]



Live Transcript

- Closed captioning automatically generated by Zoom



- Use the View button in the upper right-hand corner to adjust the meeting view settings to your preference



If you have trouble with the meeting technology during the presentation, please call:

[+1.888.799.9666]

Audio Settings ^



Raise Hand



Q&A



Live Transcript

Leave

# Public Hearing Notes and Procedures

## Public record

- While this virtual public hearing is not being recorded, MassDOT may choose to retain and distribute the images, audio and the Q&A transcript from this hearing.
- All parts of this hearing are considered public record.
- If you are not comfortable being recorded, please refrain from using the Q&A feature or you may choose to excuse yourself from the hearing. Information from this hearing will be posted on the Mass.gov website.

## **Important notes**

- Your microphone and webcam are automatically disabled upon entering the hearing.
- This hearing will be open to questions and answers at the end of the presentation.
- Please take time to respond to our survey at the end of the presentation. Your feedback is important.

## Notice of MassDOT's policy on diversity and civil rights

- All MassDOT activities, including public meetings, are free of discrimination.
- MassDOT complies with all federal and state civil rights requirements preventing discrimination based on sex, race, color, ancestry, national origin (limited English proficiency), religion, creed, gender, sexual orientation, gender identity or expression, or veteran's status.
- We welcome the diversity from across our entire service area. If you have any questions or concerns, please visit <https://www.mass.gov/nondiscrimination-in-transportation-program> to reach the Office of Diversity and Civil Rights.

**Thank you for joining our meeting. We appreciate your participation!**



# Tonight's Panel

- **MassDOT**

**Project Manager:** Harry Adolphe

**District Staff:** Alex Duggan

**Right of Way:** Glenda Rossetti

**VPI Producer/Facilitator:** Kayla Sousa, Michael McNutt

**Stenographer:** Julianne Ryan (Advanced Court Reporting)

- **Design Consultant – Pare Corporation**

**Project Manager:** Eric Silva, Greg Berube

- **Town of Wareham**

**Assistant Town Planner:** Jonathan Dickinson



# Agenda

- 1 Project Location
- 2 Project Goals & Improvements
- 3 Alternatives Considered
- 4 Impacts to the Community
- 5 What's Next?
- 6 Questions and Discussion





# Thank You for Your Support

## Local Newspaper Advertisement:

- Wareham Week



## MassDOT Facebook and Twitter

- [facebook.com/massdotinfo/](https://facebook.com/massdotinfo/)
- [twitter.com/MassDOT](https://twitter.com/MassDOT)



## Municipal Partners:

- Town of Wareham
- Council on Aging



## Community Organizations:

- Southeast Regional Planning and Economic Development District
- Registry of Motor Vehicles
- Wareham Chambers of Commerce
- Community Connections



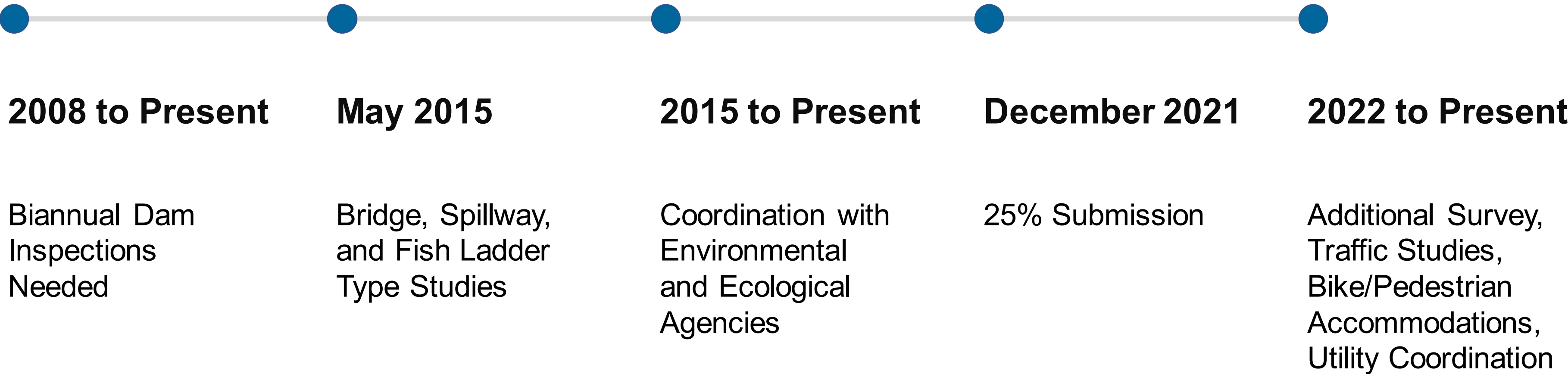


Project Location





# How did we get here?







**Why was this  
project  
initiated?**



## Existing Condition

- High Hazard Dam in Poor condition
- Requires inspections every 6 months
- Spillway is under design capacity
- Fish ladder is inadequate and has a high mortality rate
- Storage house and harvesting pad are in poor condition





Existing  
Condition

Auxiliary Spillway



Existing  
Condition

Harvesting Pad and Fish Ladder







**What do we  
want to  
accomplish?**



## Project Goals

- Improve Hydraulic Capacity
- Vehicular and Pedestrian Safety
- Reconstruct the Fish Ladder





**What  
alternatives  
were  
considered?**



## Design Alternatives – Spillway Types

### Arched Crested Weir

Nonquit Pond  
Tiverton, RI



### Ogee Weir

Sudgen Reservoir Dam  
Spencer, MA



### Labyrinth

Lake Sam  
Rayburn, TX





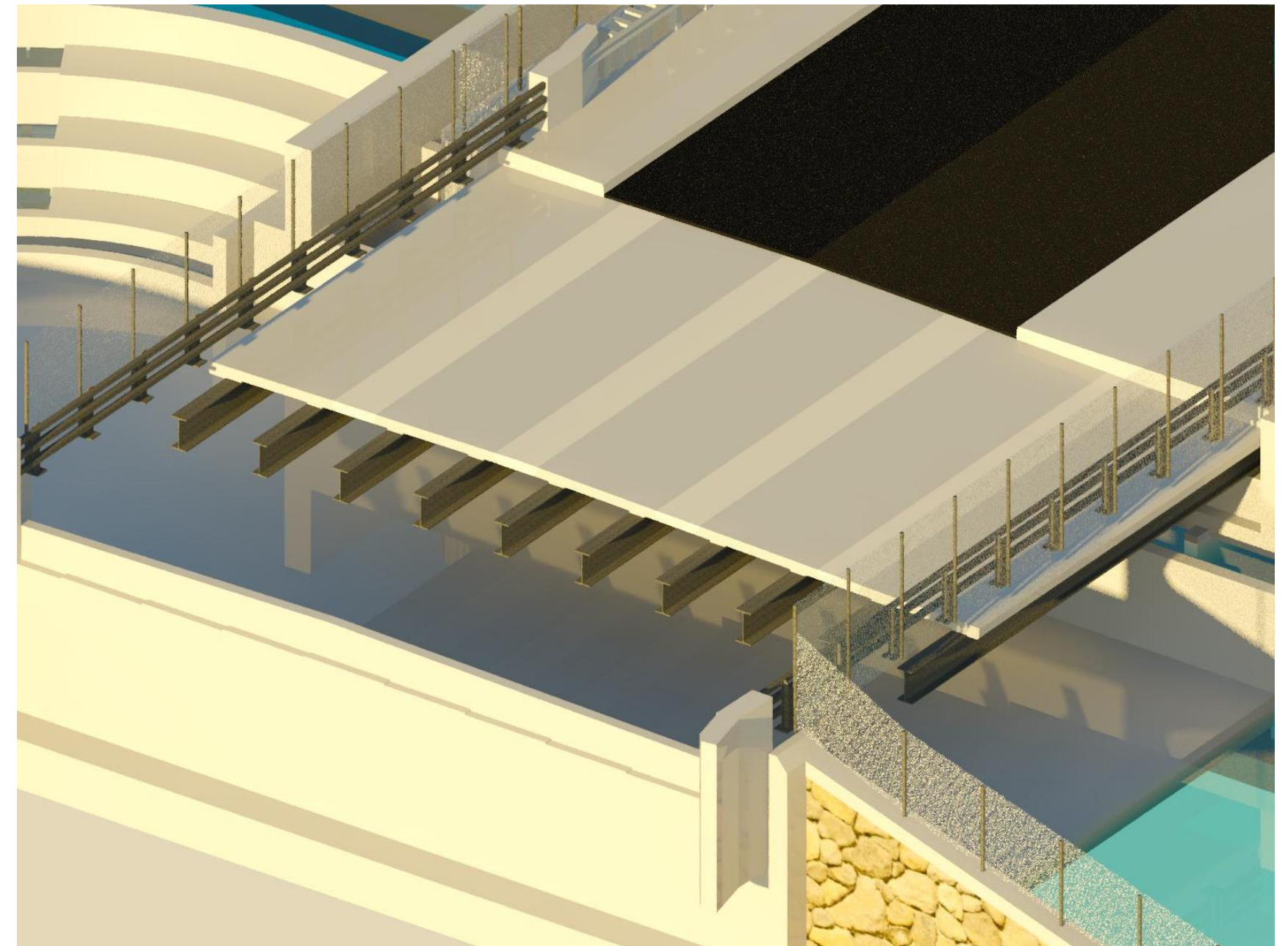
## Design Alternatives - Superstructure

### Precast Concrete NEXT Beams

South Pond Road  
East Brookfield, MA



### Steel Prefabricated Beam Units (PBUs)





# Design Alternatives – Fish Ladder

Alaskan Steeppass

Existing Fish Ladder



Denil

John Day Dam  
Rufus, Oregon



Pool and Weir

Damariscotta Mills  
Nobleboro, Maine





# Design Alternatives – Bike Lane

Striped Buffered Bike Lane

Hope Street  
Providence, RI



Median Separated Bike Lane

6<sup>th</sup> Street Bike Lane  
Charlotte, NC



Shared Use Path

East Bay Bike Path  
East Providence, RI



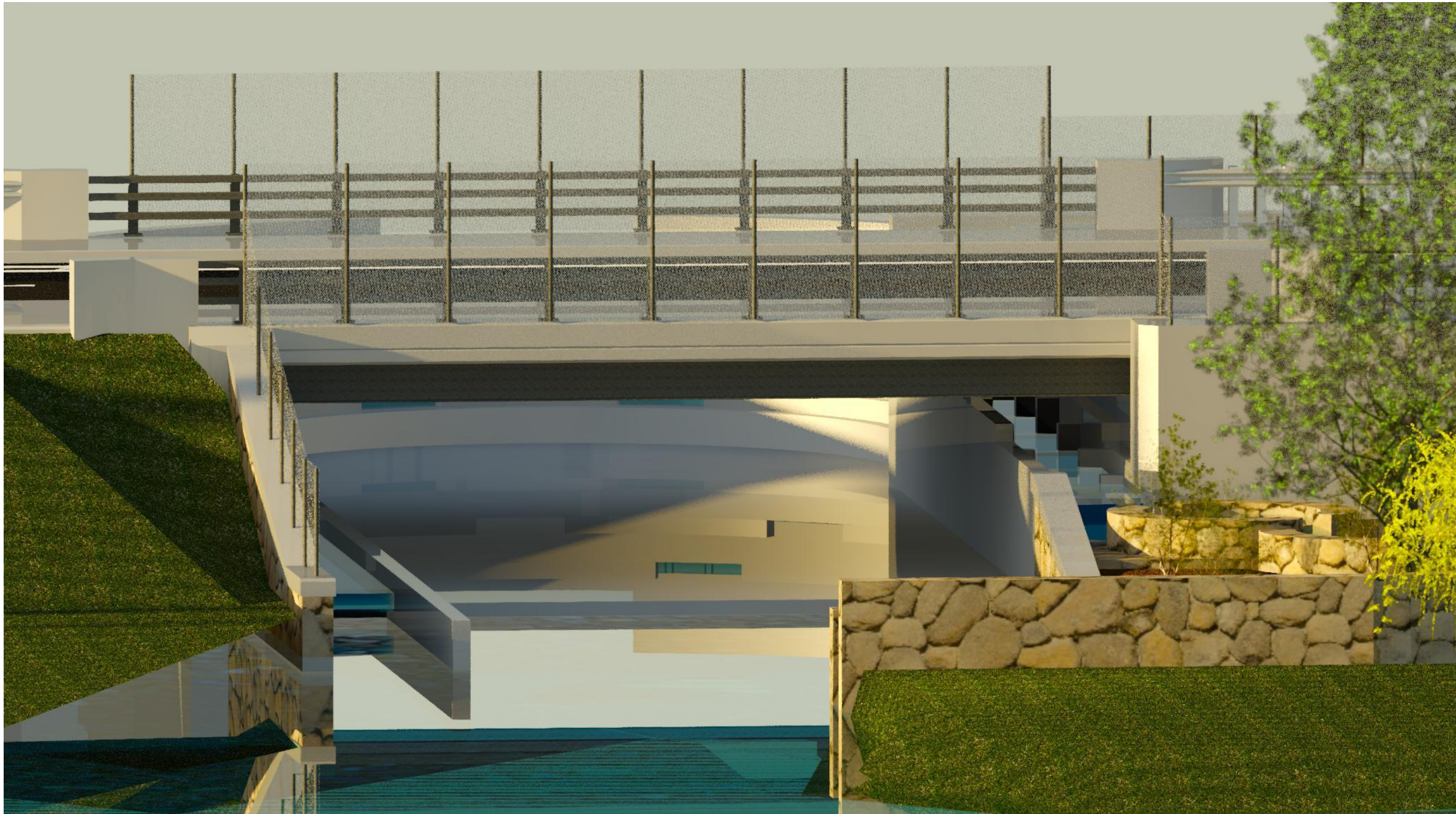




**What is the  
preferred  
alternative?**

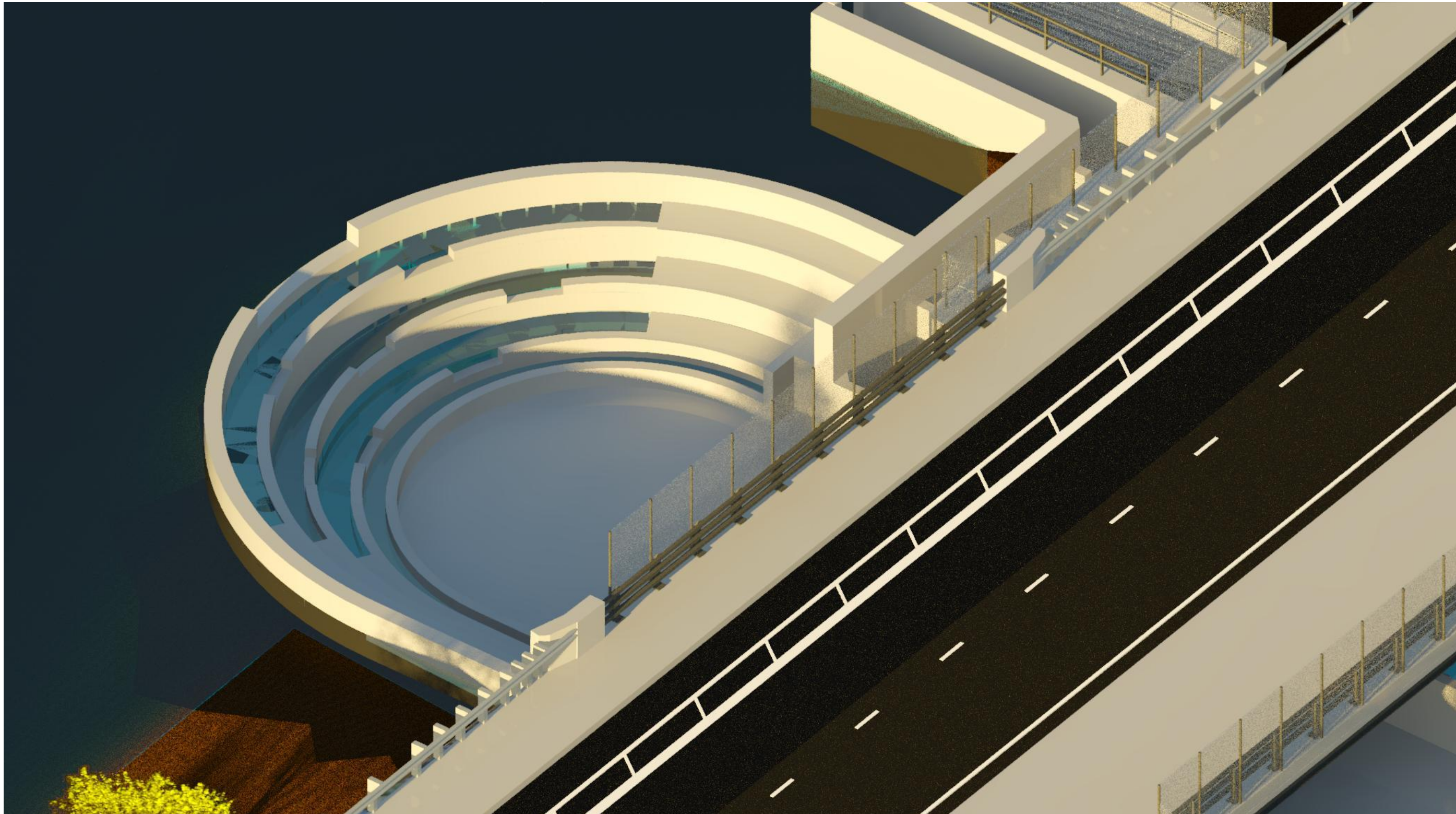


## Preferred Alternative: Steel Prefabricated Bridge Unit Structure





## Preferred Alternative – Arched Weir Spillway





# Preferred Alternative – Pool and Weir Fish Ladder



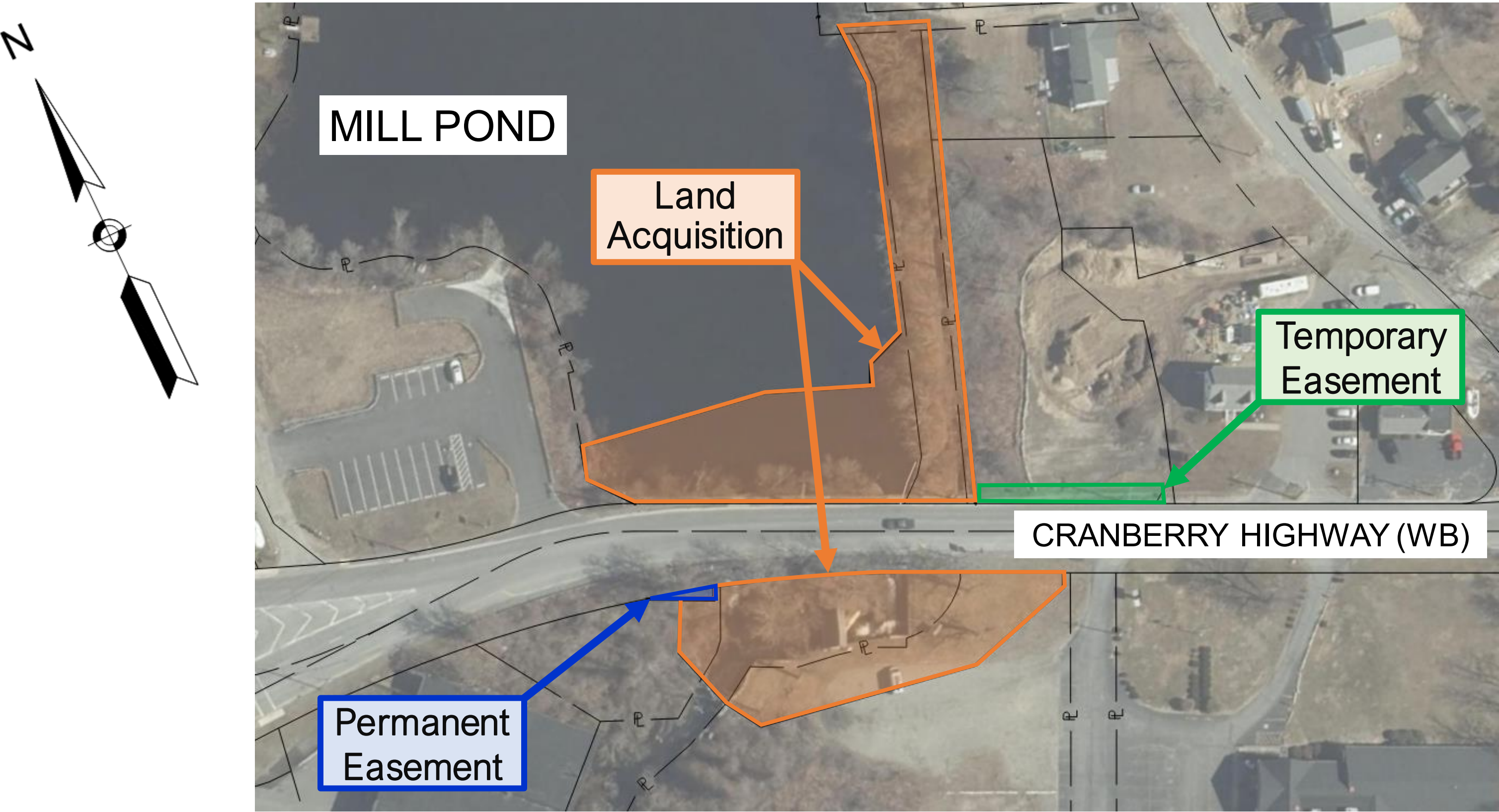




**How will your  
property be  
impacted?**



# Preliminary Right of Way (ROW) – Location Plan



Legend:

Land Acquisition

Permanent Easement

Temporary Easement



## Preliminary Right of Way (ROW) discussion – 25% Design

- Responsible for acquiring all necessary rights in public land for design, construction, and implementation of a project.
- Affected property owners will be contacted by personnel from the ROW Bureau or consultants representing MassDOT.
- Procedures must comply with state and federal regulations governing the acquisition process.
  - Property owners are protected under Massachusetts General Laws, primarily Chapter 79.
  - If project receives federal funds, property owners are further protected under Title III of the Real Property Act of 1970, as amended.
- Fee takings, permanent easements, and/or temporary construction easements may be required.



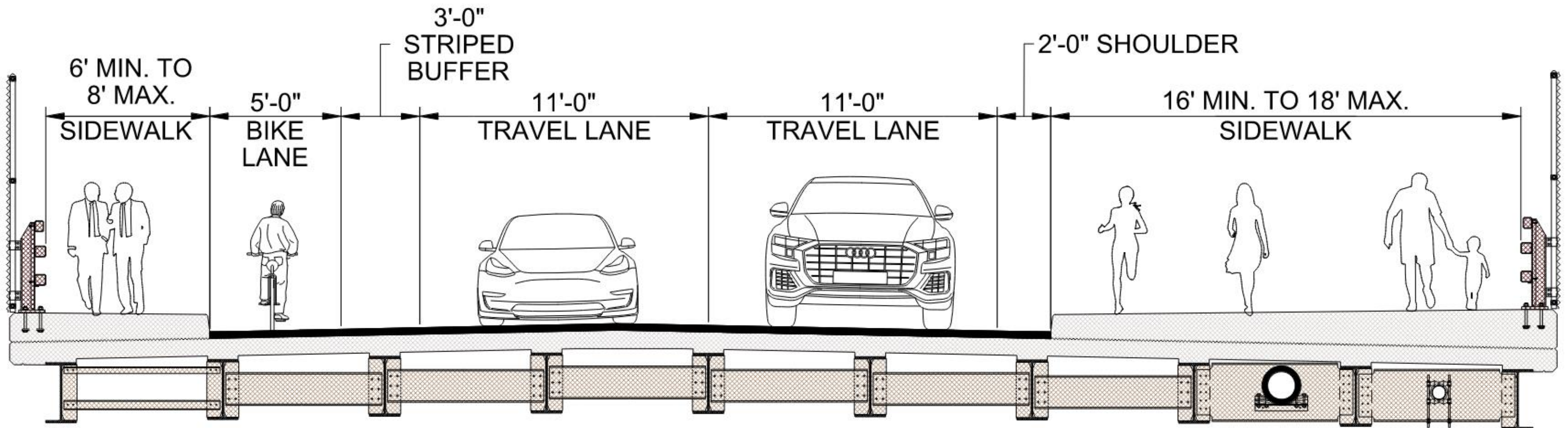


**How will  
bicyclists and  
pedestrians  
be impacted?**



## Bicycle and Pedestrian Impacts

- Construction will impact traffic patterns. Bike and pedestrian access maintained during construction.
- Striped buffered bike lane accommodates future expansion.
- Sidewalks provided on both sides.







What are the environmental, cultural resource, and community impacts?



## Cultural Resources

- The dam and fishway built in the 1800's.
- The proposed fish ladder will increase fish passage.

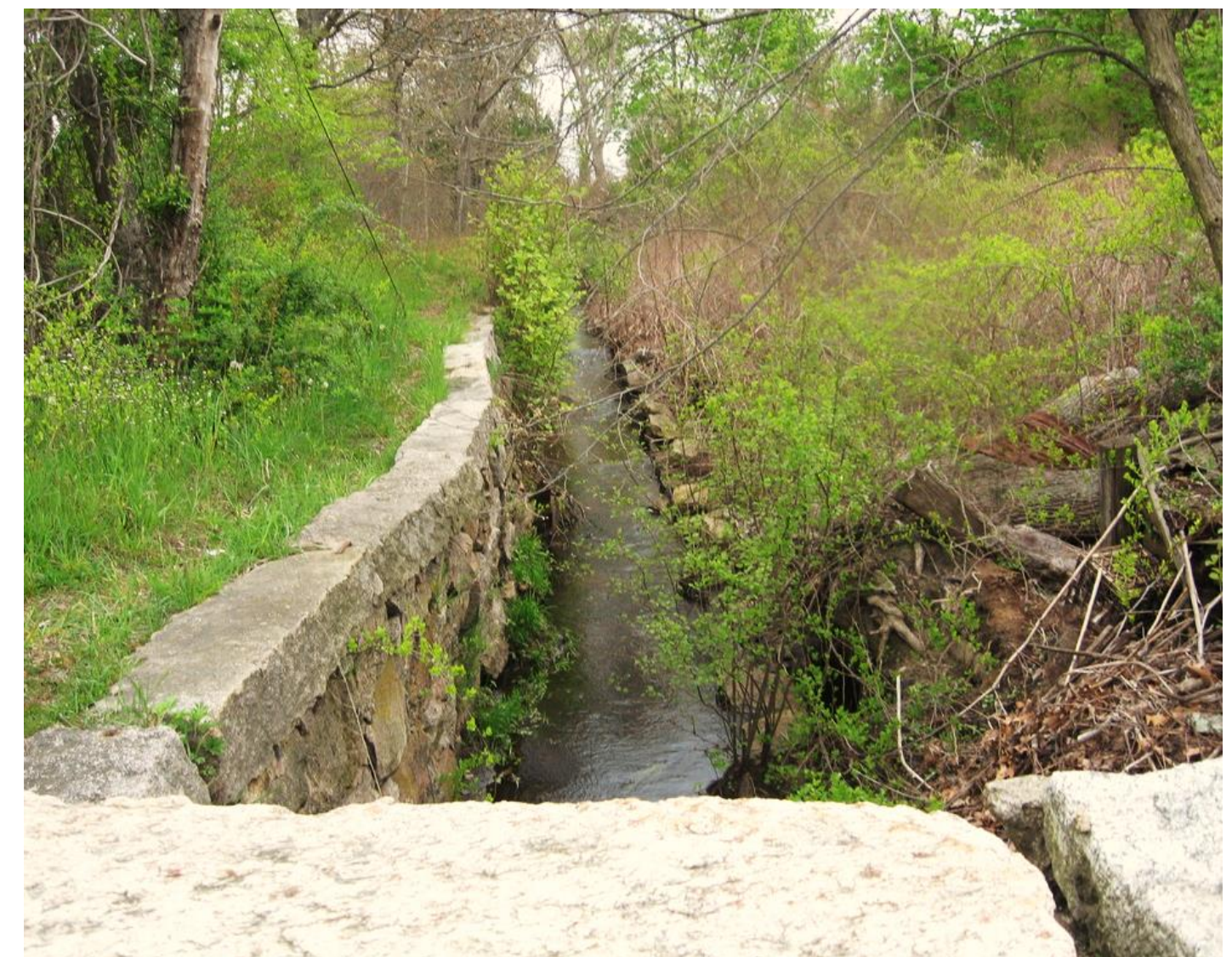
## Environmental Impacts

- Temporary waterway wetland impacts will be fully restored.
- Environmental permits are required.

## Community Impacts

- Traffic patterns will impact vehicular and pedestrian traffic.
- Boat ramp access maintained.

Fishway  
Location







**What is the  
construction  
approach?**



## Proposed Construction Approach

- **Advertising and Award**
  - Scheduled to advertise in **Fall 2024**
  - The Contractor will be selected in **Winter 2025**
- **Construction Phasing**
  - Project is anticipated to be completed in 6 phases over 3 to 4 years
  - Phasing is required to maintain acceptable traffic patterns, bicycle and pedestrian traffic, and comply with permitting restrictions
- **Accelerated Construction**
  - Precast concrete components will be used as much as practical to limit preparation of formwork and curing times
    - Precast Components: PBUs, Guardrail Transitions, Approach Slabs

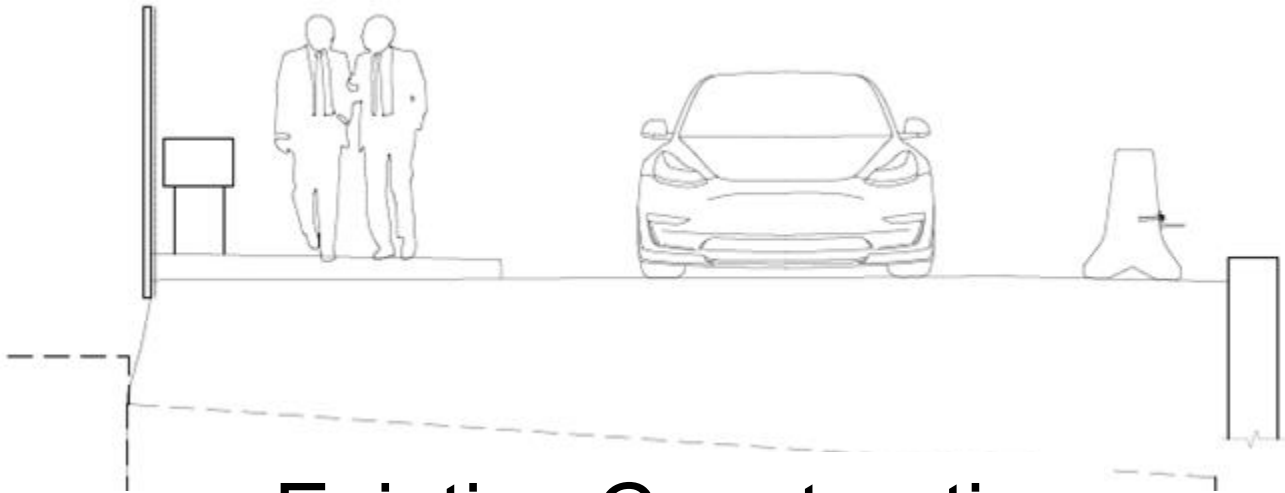
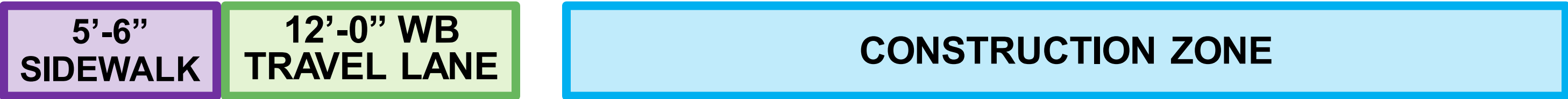
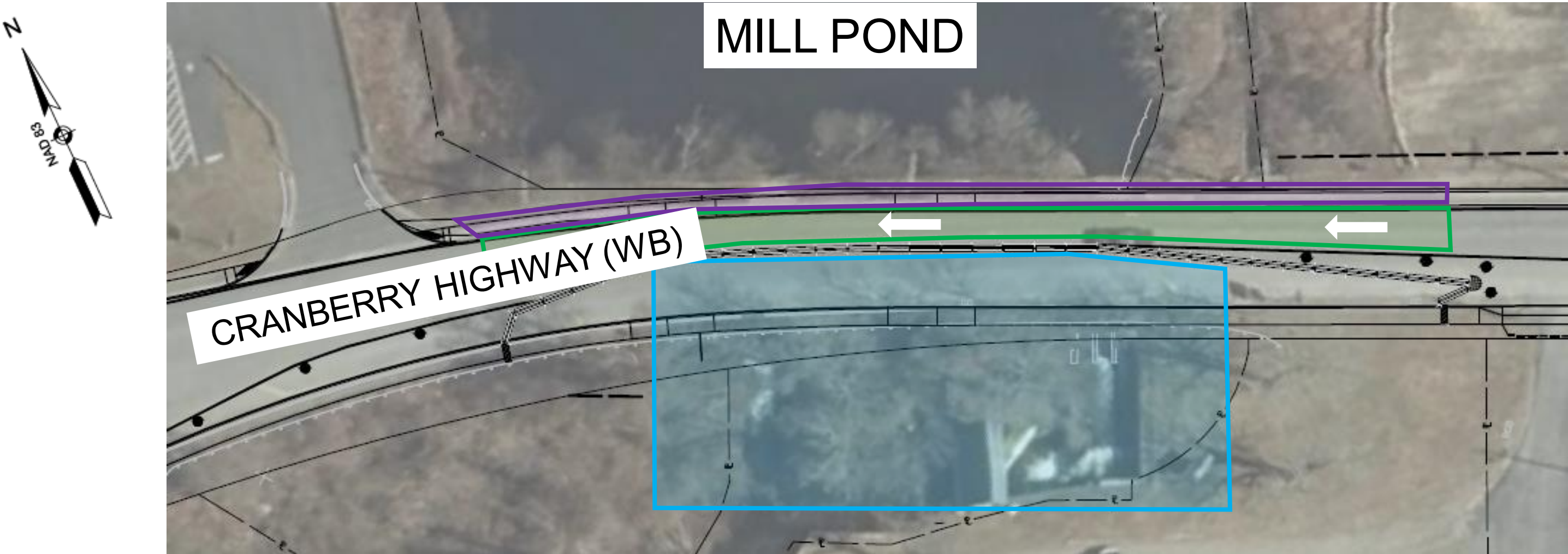




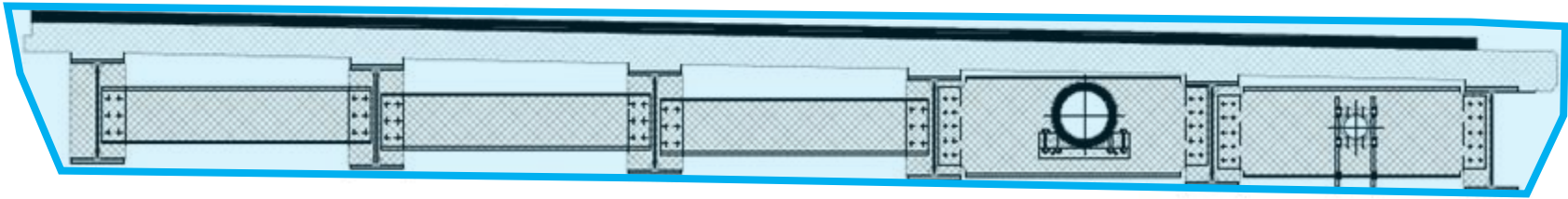
**How will the  
road user be  
affected?**



Temporary Traffic Control – Phase 1



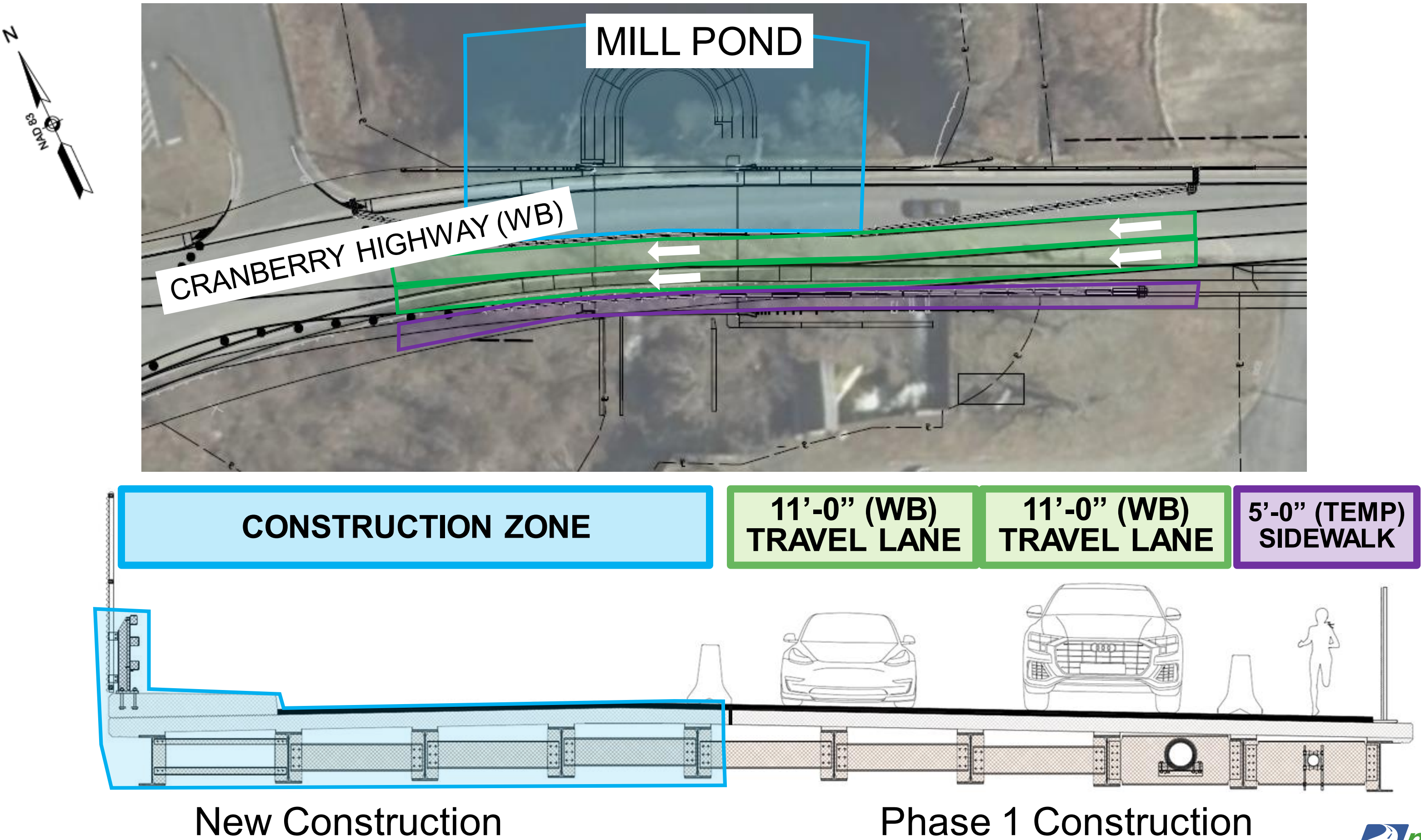
Existing Construction



New Construction

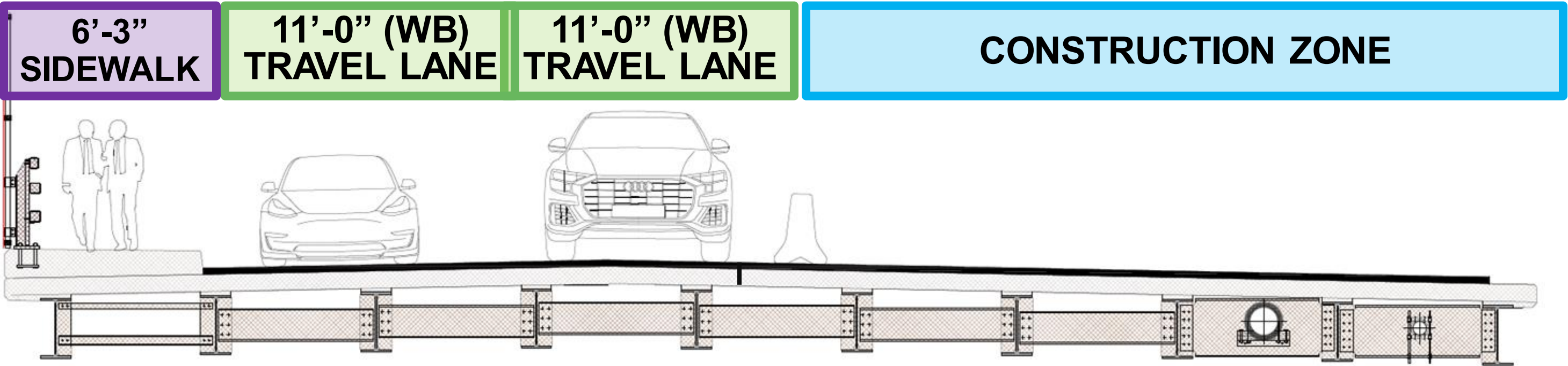
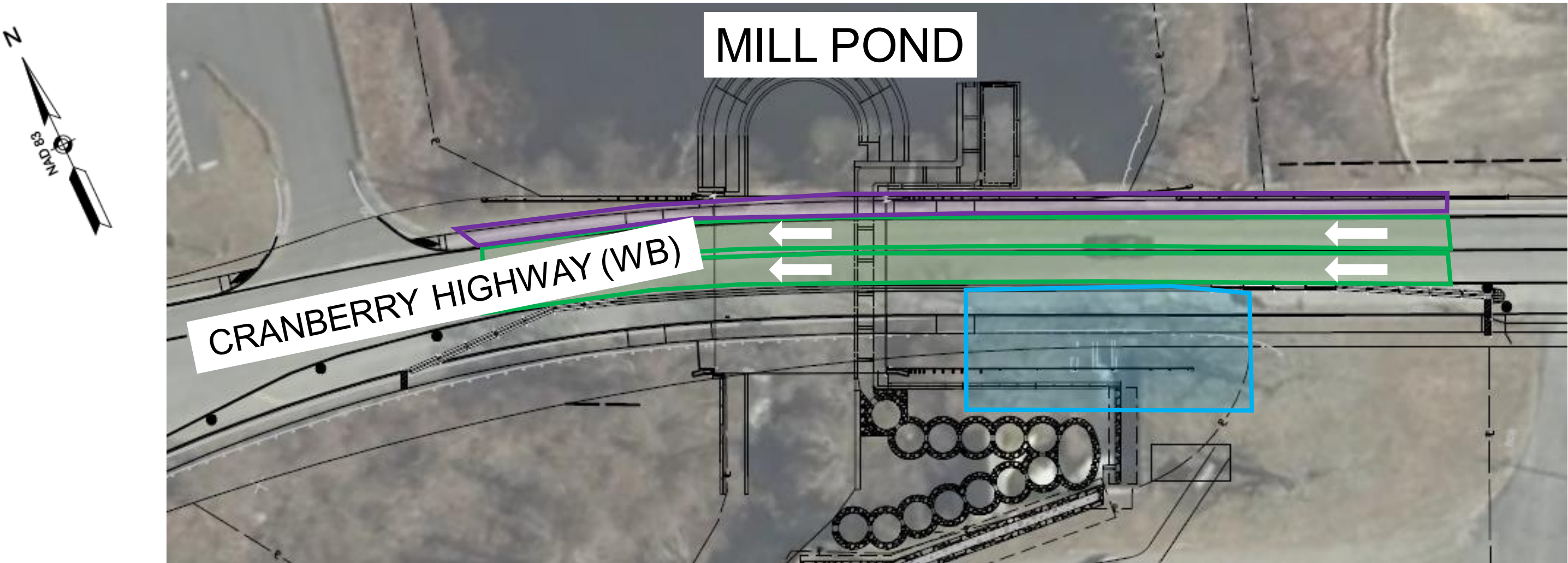


Temporary Traffic Control – Phase 2



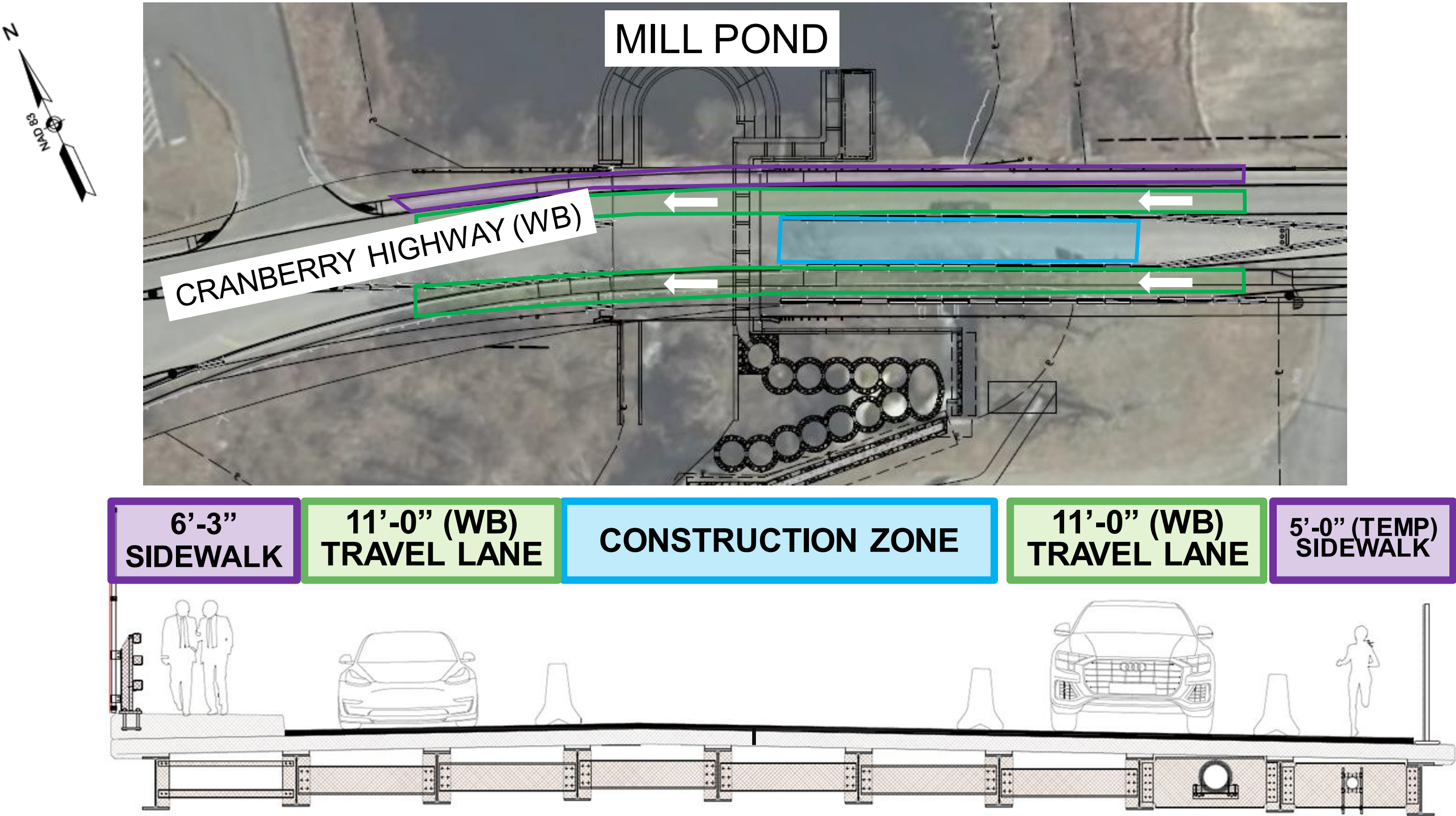


Temporary Traffic Control – Phase 3



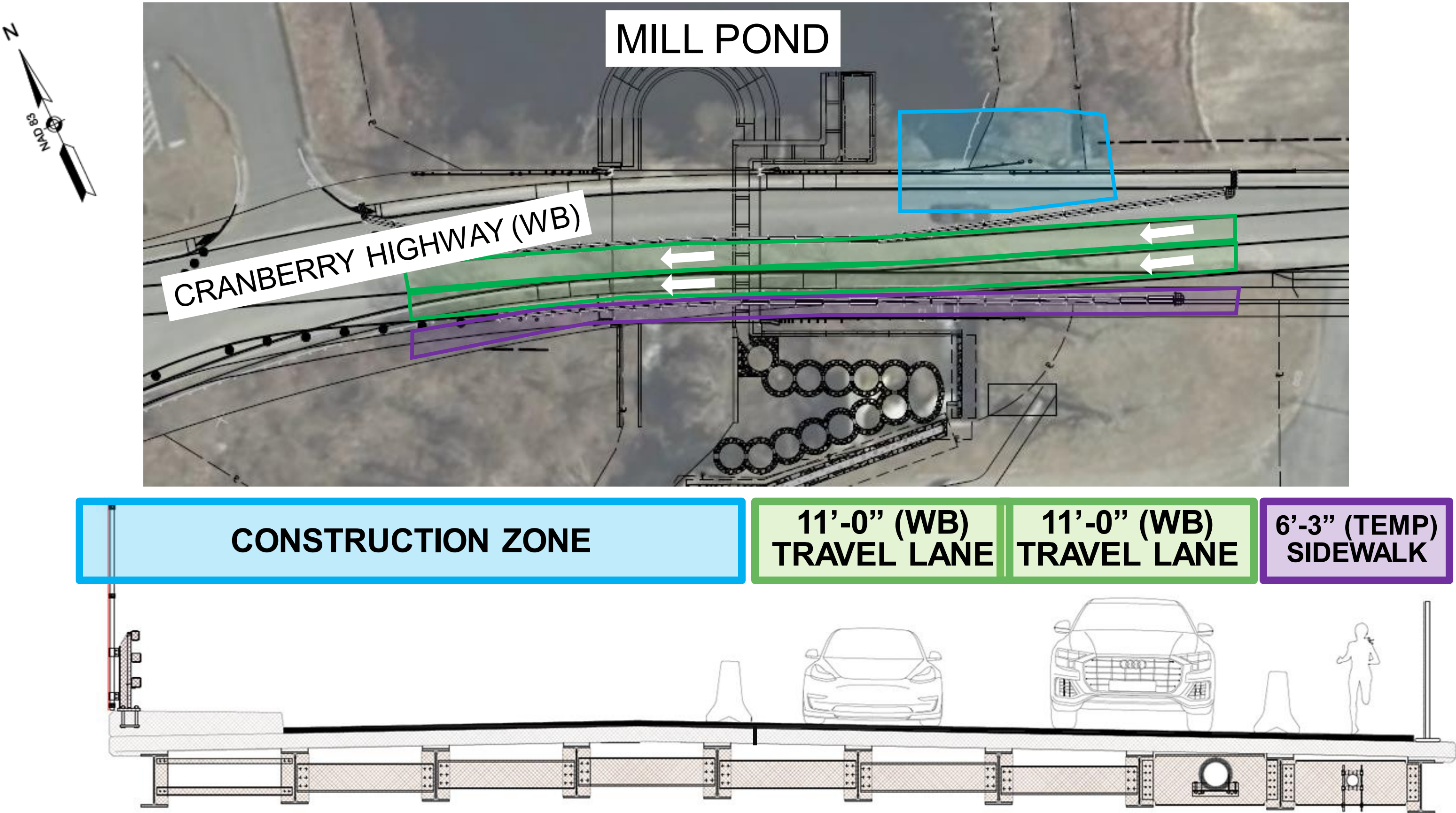


Temporary Traffic Control – Phase 4



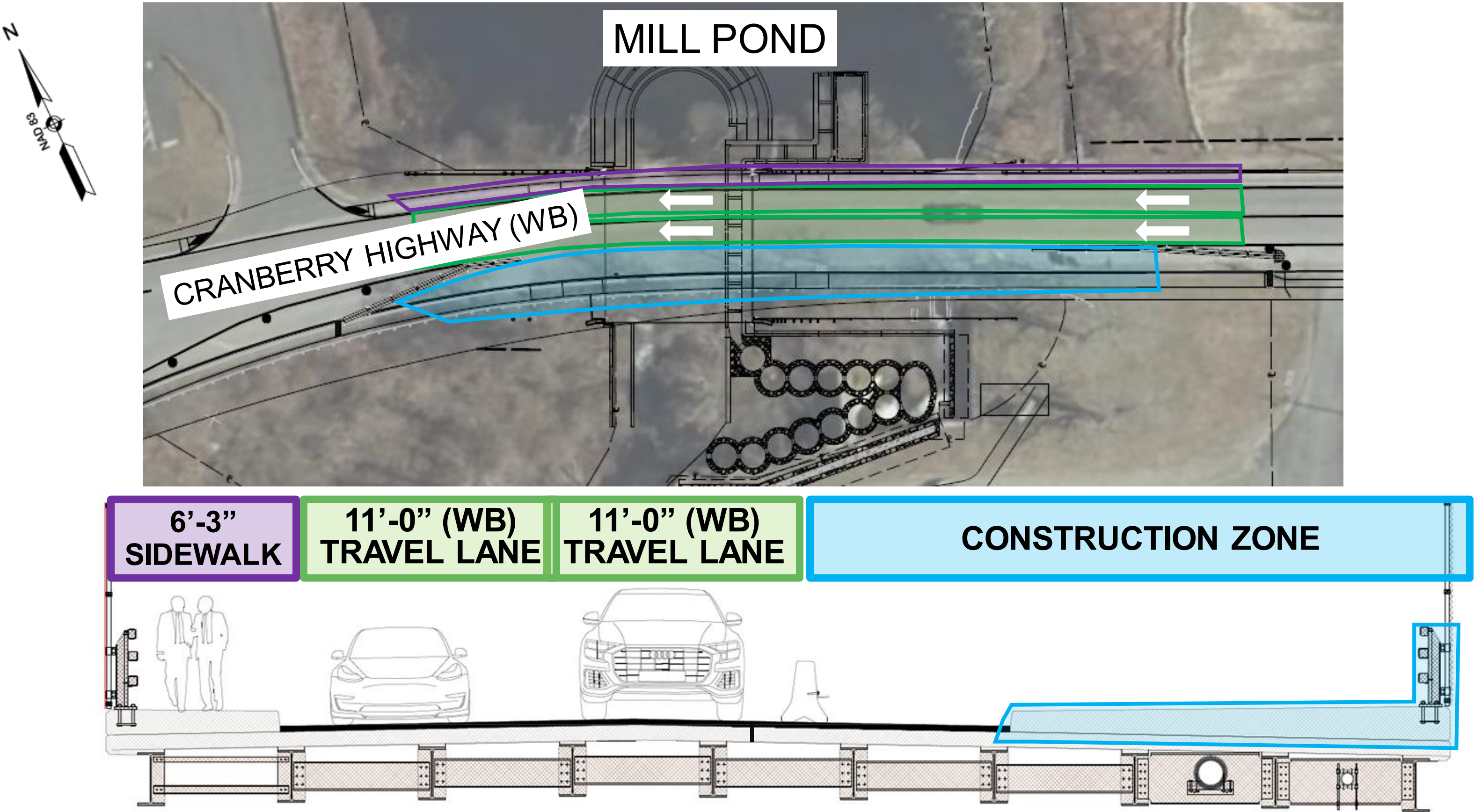


Temporary Traffic Control – Phase 5





Temporary Traffic Control – Phase 6





# Our next steps



**Spring 2023**

Incorporate discussions from public outreach



**May 2023**

Prepare Permit Applications



**July 2023**

75% Design Submission



**Winter 2024**

100% / Final Design



**Winter 2025**

Advertise for Construction





**How will we  
keep you  
informed?**



## How to reach us?

- Submit written comments to:  
Carrie Lavalley, P.E. Chief Engineer  
MassDOT  
10 Park Plaza  
Boston, MA 02116  
Attention: Highway Design, PROJECT FILE NO. 606352
- Submit email comments to:  
[DOTHighwayDesign@dot.state.ma.us](mailto:DOTHighwayDesign@dot.state.ma.us)
- For project information visit the MassDOT Design Public Hearing web site at:  
<https://www.mass.gov/massdot-highway-design-public-hearings> or use the QR Code:







**Questions and  
discussion**



## Questions and Answers



- “Raise your hand” to be unmuted for verbal questions (Alt + Y)



- Submit your questions and comments using the Q&A button



- Please state your name before your question



- Please share only 1 question or comment at a time, limited to 2 minutes, to allow others to participate



- To ask a question via phone, dial \*9 and the moderator will call out the last 4-digits of your phone number and unmute your audio when it is your turn



- Please take a few minutes to complete the survey after the meeting to let us know how your experience was with this virtual meeting

**All questions and comments are subject to disclosure for public records. Please use these functions for project related business only.**





# *Thank You*

*Cranberry Highway (Route 28/Route 6)  
over Agawam River Bridge No. W-06-020*

Virtual Public Hearing | Tuesday, April 25, 2023 | 6:30 p.m.

Project File No. 606352

Harry Adolphe | [harry.adolphe@state.ma.us](mailto:harry.adolphe@state.ma.us)

