

Appendix E: Listening Session Material

Listening Session Social Media Postings

Listening Session Slideshow

Listening Session Sign-in Sheet



Brookfield
MASSACHUSETTS
Incorporated 1673



Search



Departments

Boards & Committees

Town News & Notices

2018 Community Development

Where Do I Go ?

Home



Municipal Vulnerability Preparedness Program

Brookfield is participating in the Massachusetts Municipal Vulnerability Preparedness program to develop priorities for adapting to changing natural hazards. We invite you to attending this upcoming meeting to learn about the program, see the highlights from the town's MVP workshop, and share any comments you might have on the future resiliency of Brookfield. Click on the link below for more information.

Attachment	Size
brookfield_listening_session_flyer_050419.pdf	211.69 KB

Brookfield Town Hall

6 Central Street, Brookfield, MA 01506

PH: (508) 867-2930

[Homepage Slideshow - View Larger](#)



Sign Up For
Emergency Notifications

[Website Disclaimer](#)

[Government Websites by CivicPlus®](#)

[Login](#)



Town of Brookfield, MA

May 23 at 6:49 AM · 🌐

Brookfield is participating in the Massachusetts Municipal Vulnerability Preparedness program to develop priorities for adapting to changing natural hazards. We invite you to attending this upcoming meeting to learn about the program, see the highlights from the town's MVP workshop, and share any comments you might have on the future resiliency of Brookfield.

PUBLIC LISTENING SESSION

Brookfield Municipal Vulnerability Preparedness Program

**Learn more about Brookfield's climate resilience planning
under the Massachusetts Municipal Vulnerability
Preparedness (MVP) program!**

MVP provides support for communities to begin the process of planning for climate resilience and prioritizing adaptation and hazard mitigation actions. Communities that complete the MVP certification program are eligible for follow-up grant funding and other opportunities.

The main listening session will be held at 5:30 PM, with a brief presentation during the Selectmen's meeting at 6:30 PM.

For more information, please contact the Brookfield Board of Selectmen at (508) 867-2930, the Central Massachusetts Regional Planning Commission at (508) 459-3339, or email

aloew@cmrpc.org

Tuesday, June 04, 2019 at 5:30 PM
Town Hall, 6 Central Street
Banquet Room

Brookfield invites residents to listening session

BROOKFIELD — Brookfield is inviting residents to attend a public forum on the evening of June 4, at 5:30 p.m., to learn about the Massachusetts Municipal Vulnerability Preparedness Program and its progress in Brookfield.

The MVP Program is a state-funded grant opportunity to allow municipalities to plan for climate resiliency to protect residents and infrastructure against changing natural hazards. Once a town has completed the MVP program and become a certified MVP community, it is eligible for additional grant opportunities to focus and solve issues raised in the

town's approved plan.

Brookfield has partnered with the Central Massachusetts Regional Planning Commission to successfully complete the program. As part of the program, CMRPC and the town's core team hosted a day-long workshop attended by town officials and other stakeholders to identify the risks and associated action items that they best believe the town is facing now and in the future. These findings will be presented at the listening session and attendees are encouraged to ask questions and provide comments and feedback. A similar presentation will follow at that evening's meeting

of the Brookfield Board of Selectmen. After these meetings, the final MVP report will be open to review ahead of the June 30th deadline for submission to the state.

The findings and listening session will cover the top hazards identified at the workshop as those most likely to occur in Brookfield, the primary topic areas set out by the state, and the accompanying risks and strategies developed by the workshop attendees. Additionally, CMRPC will share the results of a survey conducted to examine interest in adding municipal water service to southern areas of Brookfield to help protect

against future droughts. This additional activity was included in Brookfield's MVP grant.

Interested residents may attend the listening session on Tuesday, June 4 at 5:30 p.m. in the Banquet Hall at the Brookfield Town Hall, 6 Central St. The presentation with the Board of Selectmen will take place that same evening at the selectmen's regularly-scheduled meeting at 6:30pm. Questions about the program or the event can be directed to Andrew Loew, Central Massachusetts Regional Planning Commission, at 508-459-3339.

Mr. Gutter

2019 Municipal Vulnerability Preparedness (MVP) Program

Public Listening Session

Brookfield, MA

June 04, 2019

Brookfield Town Hall, Banquet Room



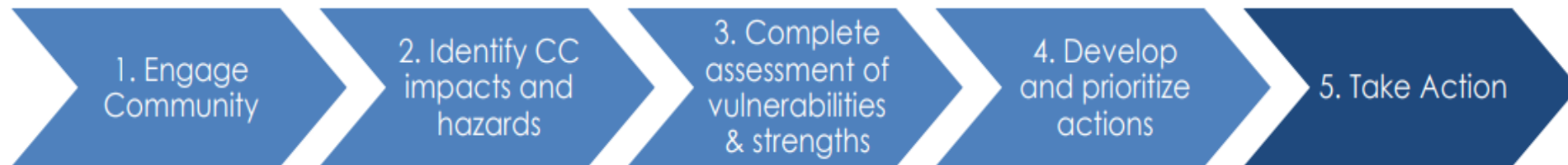
Municipal Vulnerability Preparedness (MVP) Program Overview

- The MVP grant program provides support for Massachusetts communities to begin the process of planning for and implementing climate resilience
- Communities who complete the MVP planning program become certified as an *MVP Community* and are eligible for MVP action grants and bonus points on some other state grants (MassWorks, etc.)
- Based on the Community Resilience Building framework from the Nature Conservancy and National Oceanic and Atmospheric Administration (NOAA)
- 71 communities designated in 1st round; another 82 now underway in 2nd

MVP Planning Program Objectives

- Define extreme weather, natural and climate-related hazards
- Identify existing and future vulnerabilities and strengths
- Develop and prioritize actions for the community and broader stakeholder networks
- Identify opportunities for the community to advance actions to reduce risks and build resilience

State and local partnership to build resiliency to climate change



MVP vs. Hazard Mitigation Planning

- MVP overlaps somewhat with Hazard Mitigation Planning, but MVP is more focused on climate change in the long-term
- Brookfield's Hazard Mitigation Plan was updated in August 2018
- 5-year plan is reviewed and approved by MEMA and FEMA with very specific requirements that make municipalities eligible for mitigation grants, if, and when there is a disaster declaration
- MVP is more of a consensus- and awareness-building exercise than a step-by-step analysis and plan

MVP Process

- Community-driven process led by a project coordinator with a core team of Town officials, staff and volunteers representing central administration, planning and economic development, public works, public health, fire/EMS, police, conservation, senior center, schools and other key stakeholders who care about the future health and resilience of the community.
- Brookfield Core Team met 5 times to guide process (5-6 members)
- CMRPC was selected as the MVP service provider (state-certified team)
- Brookfield MVP workshop held on April 25 with 11 attendees
 - Invitation-only workshop
 - Listening session today is open to the public

Top Hazards Identified at MVP Workshop

- Flooding
- Winter Storms
- Heat/Droughts/Wildfires
- Severe Storms



Primary Topic Areas

- Infrastructure
- Society
- Environment



Environment

Priority Features

- ▶ Quaboag River
- ▶ Invasive Species
- ▶ Septic Systems
- ▶ Wetlands

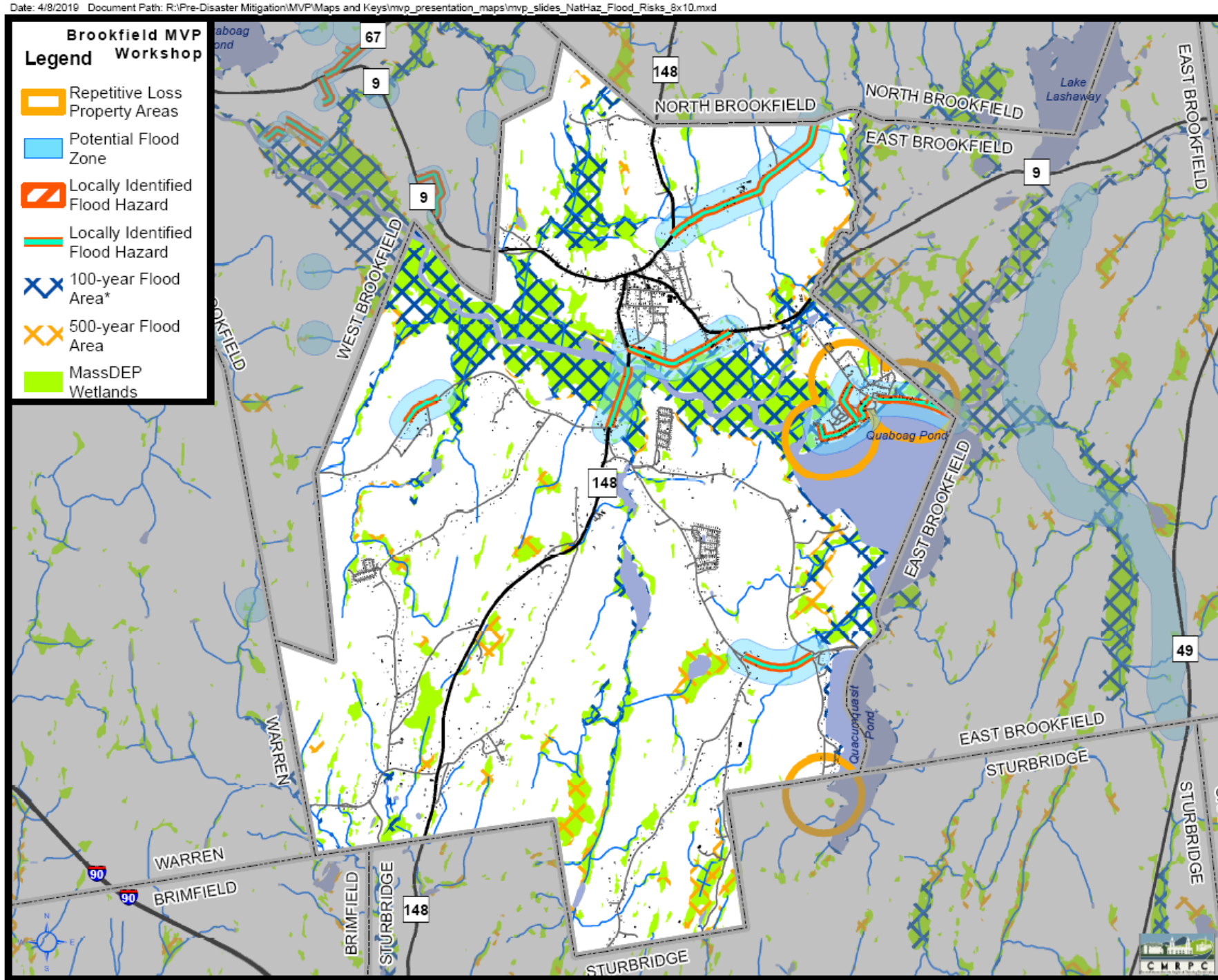
Local Strengths

- ▶ Forest Cover
- ▶ Open Space
- ▶ Wildlife
- ▶ Ponds

Strategies

- ▶ Complete a comprehensive plan to monitor and assess the water quality and risks of the Quaboag River and other waterways throughout the town
- ▶ Complete a study and develop a management plan for the ongoing efforts to combat the risks of invasive species in natural areas
- ▶ Increase Board of Health and Building inspections and ensure that all septic systems are meeting Title 5 compliance
- ▶ Continue to protect and examine opportunities for low impact development and nature based solutions and enforce and expand zoning regulations

Environment



Source: Data provided by the town of Brookfield, CMRPC, MassDOT, MassGIS. Information depicted on this map is for planning purposes only.

Society

Priority Features

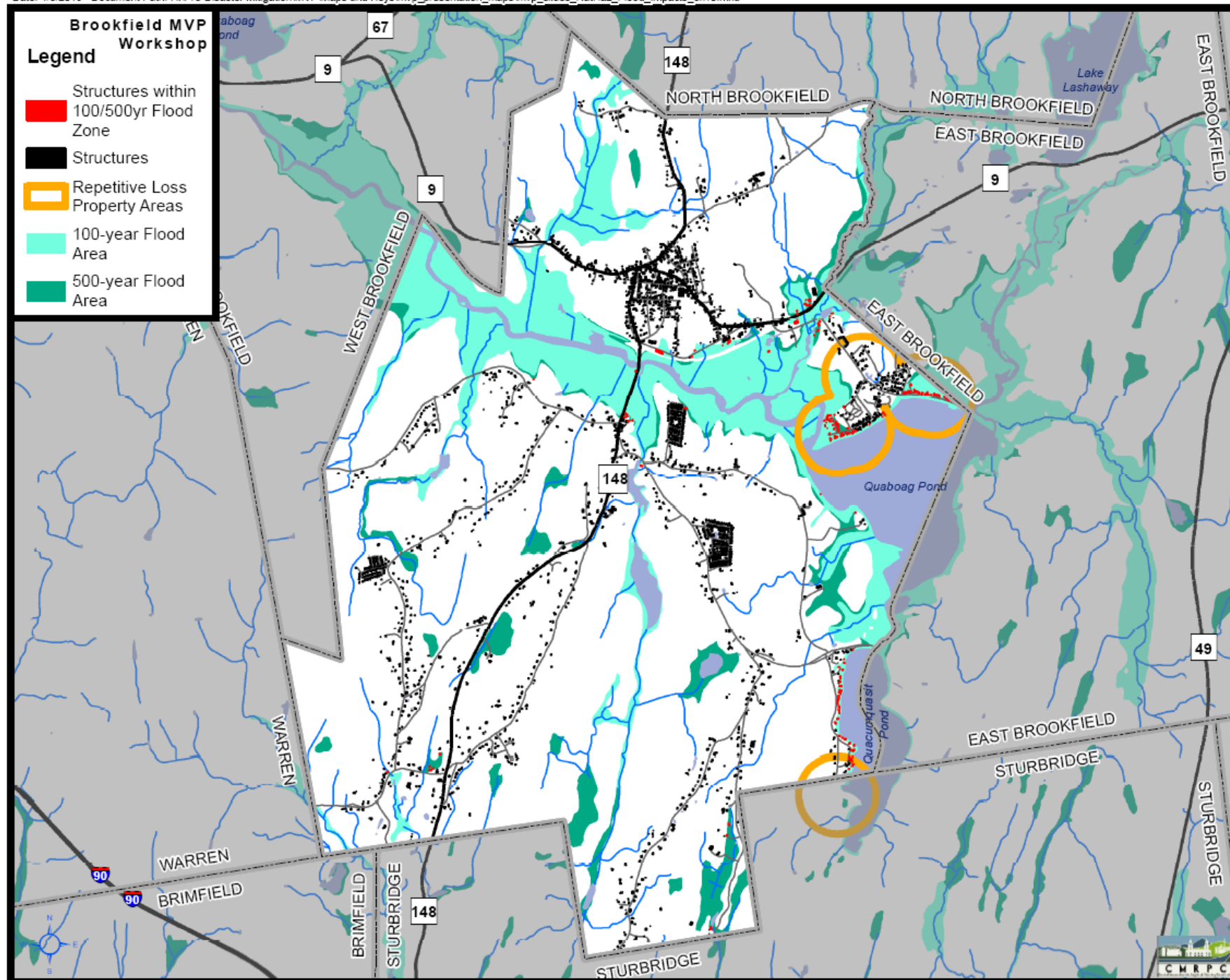
- ▶ Quaboag Street and Pine Lane Neighborhood
- ▶ Public Education/Awareness
- ▶ Reverse 911 and Communications System
- ▶ Municipal Owned Sites

Local Strengths

- ▶ Emergency Services
- ▶ Town Planning
- ▶ Town Communications
- ▶ Residents

Strategies

- ▶ Evaluate evacuation procedures, develop a floor water pumping plan, and pursue grant opportunities to protect houses in the area
- ▶ Increase education, outreach, and awareness efforts of local issues and vulnerable populations
- ▶ Continue to support and assess the use of Reverse 911 and expand for evacuation planning
- ▶ Investigate water and well access and suitability on town owned sites, provide and communicate any development plans with the residents, and consider utilizing some town owned sites for a shelter or visitor center



Infrastructure

Priority Features

- ▶ Public Water System Coverage
- ▶ Municipal Buildings
- ▶ Drainage and Culverts
- ▶ Elementary School

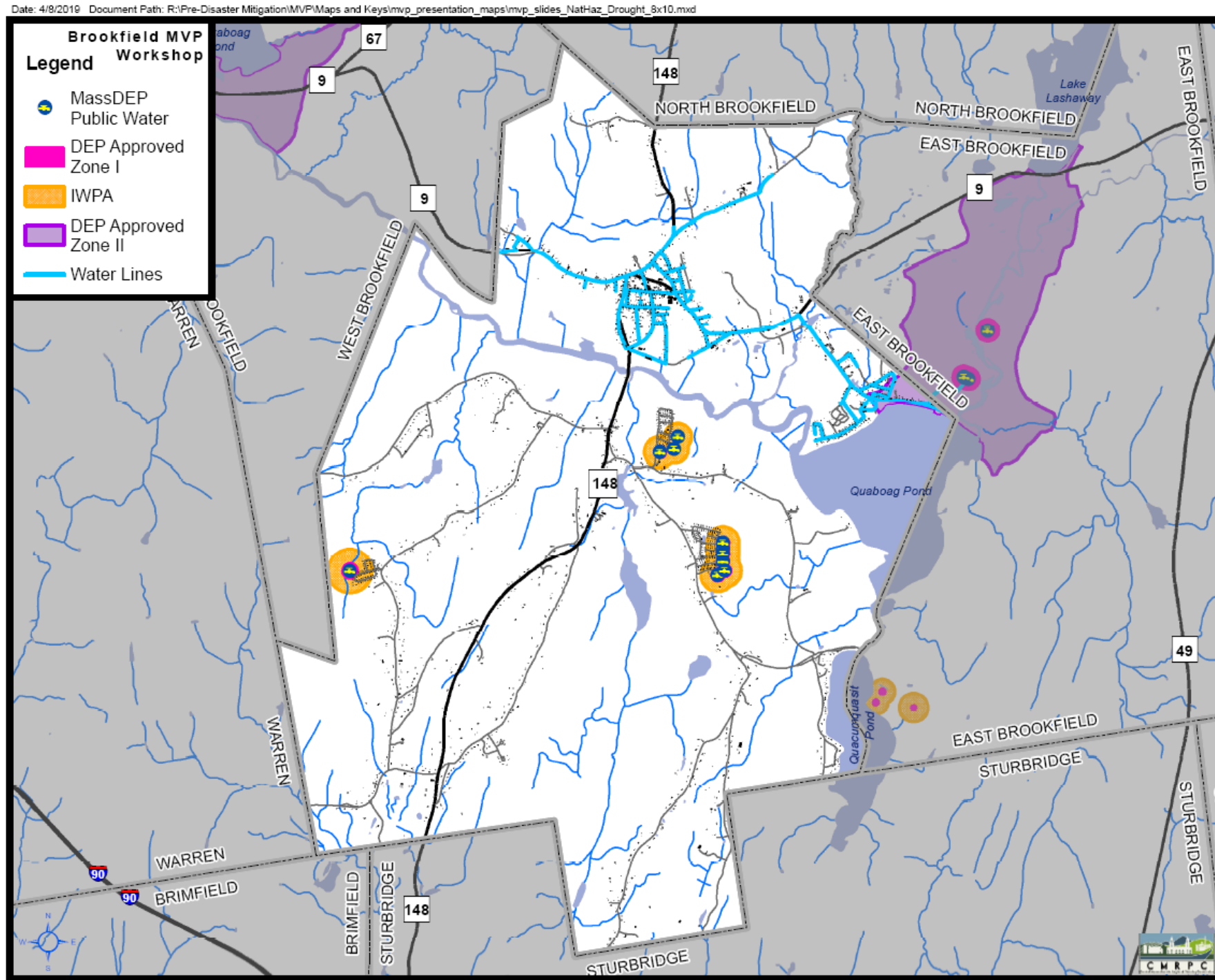
Local Strengths

- ▶ Roads
- ▶ Gas Supply
- ▶ Evacuation Routes
- ▶ Fire Fighting Capabilities

Strategies

- ▶ Complete an engineering analysis and study of the existing water system infrastructure and complete a plan to update and expand water infrastructure
- ▶ Upgrade and install backup generators and lightning rods at Town Hall, Police Station, and Fire Station
- ▶ Ensure all municipal buildings are ADA compliant to support shelter use
- ▶ Complete an engineering inventory and analysis of all storm drains and culverts and replace, upgrade, and expand capacity as needed
- ▶ Expand the backup generator capacity of the Elementary School

Infrastructure



December 2018

Dear Southern Brookfield Resident or Business Operator:



With support from a state Municipal Vulnerability Preparedness (or MVP) grant and the Central Massachusetts Regional Planning Commission, the Town of Brookfield is exploring the long-term possibility of extending municipal water service to serve all or some neighborhoods south of the Quaboag River that currently rely on private well water. As an early step in its research, the Town asks that all households and businesses in that portion of the community **complete the attached survey** to tell us more about your existing well service, water usage, and thoughts about possible expansion of the Town's water system. Please respond no later than **January 4, 2019**.

Municipal water service can provide a number of benefits not available through private wells:

- Access to clean water sourced from an aquifer that is relatively resilient to drought
- Water that's available even when the power goes out, without the need for your own generator
- Professional management of your water supply, including regular testing and treatment in compliance with federal and state standards
- A backup connection to the water supply in another community (West Brookfield) in case of drought or other emergency
- Water for fire hydrants that can protect your family and property and help reduce your homeowners' or renters' insurance rates
- No need to monitor your own water chemistry, maintain/replace your own pump or generator, or drill new wells (or deepen existing ones) in time of drought
- Shared costs with other users of the water system
- Superior water service at long-run costs that are roughly comparable to maintaining your own well

The average Brookfield residential water customer currently pays about \$20 per month for Town water service while lighter users pay less than \$10 per month. If the municipal system is expanded, one-time hookup costs for new residential water users in are expected to be around \$1,500, and a special assessment ("betterment") charge to residential property owners receiving new service from the system expansion can be expected to range from around \$10 to \$60 per month for 20 to 30 years, depending on the system size and property-specific factors. In comparison, costs for installation or total replacement of a residential well system typically range from \$5,000 to \$7,000, while operations, maintenance and occasional replacement of well components such as pumps are estimated at \$20 to \$40 per month for most users in the long term, depending on various factors. Residents of mobile home parks generally pay for water service as part of their rental fee – consult your park's management for details.

Completed survey responses should be returned to the Brookfield Town Hall or the Merrick Public Library, or they can be mailed to Brookfield Water Survey, c/o Central Massachusetts Regional Planning Commission, 1 Mercantile St. Suite 520, Worcester, MA 01608. Surveys may alternatively be completed online at www.surveymonkey.com/r/BrookfieldSouthWater (please submit **only ONE total survey per household/business**). Individual survey responses are confidential.

PO Box holders receiving this survey for homes or businesses located north of the Quaboag River (in the Town Center, Route 9 or vicinity) are asked **NOT to complete or submit it**.

Sincerely,

Donald Taft
Brookfield Water Commission
Robert R. Barnes
Al Jones

This survey is available online at www.surveymonkey.com/r/BrookfieldSouthWater
☐ Unsure

This survey is available online at www.surveymonkey.com/r/BrookfieldSouthWater

☐ Arsenic
☐ Iron

☐ pH level
☐ Manganese
☐ Bacteria
☐ Bad odor
☐ Bad taste
☐ Other _____

This survey is available online at www.surveymonkey.com/r/BrookfieldSouthWater

LD – SOUTH AREA WATER SURVEY

Thank you for taking the survey!

Are you a well-water user or a business/organizational well-water user?

☐ Residential

Where is your well located?

(Apt. #, if any)

For question #1, please describe the type of home you live in.

Family

For residential purposes, do you own or rent your home?

Are you in a local mobile home community?

Yes ☐ Yes, Nanatomquia ☐ Yes, Brookfield Meadow

QUESTION #4. PLEASE SKIP AHEAD TO QUESTION #12

How many people live in your home?

One to fifteen homes

How far is your well from your home or property?

Less than 100 feet ☐ 100 to 200 feet ☐ 200 to 400 feet ☐ 400 to 600 feet ☐ 600 to 800 feet ☐ 800 to 1000 feet ☐ 1000 to 1500 feet ☐ 1500 to 2000 feet ☐ 2000 to 3000 feet ☐ 3000 to 4000 feet ☐ 4000 to 5000 feet ☐ 5000 to 6000 feet ☐ 6000 to 7000 feet ☐ 7000 to 8000 feet ☐ 8000 to 9000 feet ☐ 9000 to 10000 feet ☐ 10000 to 15000 feet ☐ 15000 to 20000 feet ☐ 20000 to 30000 feet ☐ 30000 to 40000 feet ☐ 40000 to 50000 feet ☐ 50000 to 60000 feet ☐ 60000 to 70000 feet ☐ 70000 to 80000 feet ☐ 80000 to 90000 feet ☐ 90000 to 100000 feet ☐ 100000 to 150000 feet ☐ 150000 to 200000 feet ☐ 200000 to 300000 feet ☐ 300000 to 400000 feet ☐ 400000 to 500000 feet ☐ 500000 to 600000 feet ☐ 600000 to 700000 feet ☐ 700000 to 800000 feet ☐ 800000 to 900000 feet ☐ 900000 to 1000000 feet ☐ 1000000 to 1500000 feet ☐ 1500000 to 2000000 feet ☐ 2000000 to 3000000 feet ☐ 3000000 to 4000000 feet ☐ 4000000 to 5000000 feet ☐ 5000000 to 6000000 feet ☐ 6000000 to 7000000 feet ☐ 7000000 to 8000000 feet ☐ 8000000 to 9000000 feet ☐ 9000000 to 10000000 feet ☐ 10000000 to 15000000 feet ☐ 15000000 to 20000000 feet ☐ 20000000 to 30000000 feet ☐ 30000000 to 40000000 feet ☐ 40000000 to 50000000 feet ☐ 50000000 to 60000000 feet ☐ 60000000 to 70000000 feet ☐ 70000000 to 80000000 feet ☐ 80000000 to 90000000 feet ☐ 90000000 to 100000000 feet ☐ 100000000 to 150000000 feet ☐ 150000000 to 200000000 feet ☐ 200000000 to 300000000 feet ☐ 300000000 to 400000000 feet ☐ 400000000 to 500000000 feet ☐ 500000000 to 600000000 feet ☐ 600000000 to 700000000 feet ☐ 700000000 to 800000000 feet ☐ 800000000 to 900000000 feet ☐ 900000000 to 1000000000 feet ☐ 1000000000 to 1500000000 feet ☐ 1500000000 to 2000000000 feet ☐ 2000000000 to 3000000000 feet ☐ 3000000000 to 4000000000 feet ☐ 4000000000 to 5000000000 feet ☐ 5000000000 to 6000000000 feet ☐ 6000000000 to 7000000000 feet ☐ 7000000000 to 8000000000 feet ☐ 8000000000 to 9000000000 feet ☐ 9000000000 to 10000000000 feet ☐ 10000000000 to 15000000000 feet ☐ 15000000000 to 20000000000 feet ☐ 20000000000 to 30000000000 feet ☐ 30000000000 to 40000000000 feet ☐ 40000000000 to 50000000000 feet ☐ 50000000000 to 60000000000 feet ☐ 60000000000 to 70000000000 feet ☐ 70000000000 to 80000000000 feet ☐ 80000000000 to 90000000000 feet ☐ 90000000000 to 100000000000 feet ☐ 100000000000 to 150000000000 feet ☐ 150000000000 to 200000000000 feet ☐ 200000000000 to 300000000000 feet ☐ 300000000000 to 400000000000 feet ☐ 400000000000 to 500000000000 feet ☐ 500000000000 to 600000000000 feet ☐ 600000000000 to 700000000000 feet ☐ 700000000000 to 800000000000 feet ☐ 800000000000 to 900000000000 feet ☐ 900000000000 to 1000000000000 feet ☐ 1000000000000 to 1500000000000 feet ☐ 1500000000000 to 2000000000000 feet ☐ 2000000000000 to 3000000000000 feet ☐ 3000000000000 to 4000000000000 feet ☐ 4000000000000 to 5000000000000 feet ☐ 5000000000000 to 6000000000000 feet ☐ 6000000000000 to 7000000000000 feet ☐ 7000000000000 to 8000000000000 feet ☐ 8000000000000 to 9000000000000 feet ☐ 9000000000000 to 10000000000000 feet ☐ 10000000000000 to 15000000000000 feet ☐ 15000000000000 to 20000000000000 feet ☐ 20000000000000 to 30000000000000 feet ☐ 30000000000000 to 40000000000000 feet ☐ 40000000000000 to 50000000000000 feet ☐ 50000000000000 to 60000000000000 feet ☐ 60000000000000 to 70000000000000 feet ☐ 70000000000000 to 80000000000000 feet ☐ 80000000000000 to 90000000000000 feet ☐ 90000000000000 to 100000000000000 feet ☐ 100000000000000 to 150000000000000 feet ☐ 150000000000000 to 200000000000000 feet ☐ 200000000000000 to 300000000000000 feet ☐ 300000000000000 to 400000000000000 feet ☐ 400000000000000 to 500000000000000 feet ☐ 500000000000000 to 600000000000000 feet ☐ 600000000000000 to 700000000000000 feet ☐ 700000000000000 to 800000000000000 feet ☐ 800000000000000 to 900000000000000 feet ☐ 900000000000000 to 1000000000000000 feet ☐ 1000000000000000 to 1500000000000000 feet ☐ 1500000000000000 to 2000000000000000 feet ☐ 2000000000000000 to 3000000000000000 feet ☐ 3000000000000000 to 4000000000000000 feet ☐ 4000000000000000 to 5000000000000000 feet ☐ 5000000000000000 to 6000000000000000 feet ☐ 6000000000000000 to 7000000000000000 feet ☐ 7000000000000000 to 8000000000000000 feet ☐ 8000000000000000 to 9000000000000000 feet ☐ 9000000000000000 to 10000000000000000 feet ☐ 10000000000000000 to 15000000000000000 feet ☐ 15000000000000000 to 20000000000000000 feet ☐ 20000000000000000 to 30000000000000000 feet ☐ 30000000000000000 to 40000000000000000 feet ☐ 40000000000000000 to 50000000000000000 feet ☐ 50000000000000000 to 60000000000000000 feet ☐ 60000000000000000 to 70000000000000000 feet ☐ 70000000000000000 to 80000000000000000 feet ☐ 80000000000000000 to 90000000000000000 feet ☐ 90000000000000000 to 100000000000000000 feet ☐ 100000000000000000 to 150000000000000000 feet ☐ 150000000000000000 to 200000000000000000 feet ☐ 200000000000000000 to 300000000000000000 feet ☐ 300000000000000000 to 400000000000000000 feet ☐ 400000000000000000 to 500000000000000000 feet ☐ 500000000000000000 to 600000000000000000 feet ☐ 600000000000000000 to 700000000000000000 feet ☐ 700000000000000000 to 800000000000000000 feet ☐ 800000000000000000 to 900000000000000000 feet ☐ 900000000000000000 to 1000000000000000000 feet ☐ 1000000000000000000 to 1500000000000000000 feet ☐ 1500000000000000000 to 2000000000000000000 feet ☐ 2000000000000000000 to 3000000000000000000 feet ☐ 3000000000000000000 to 4000000000000000000 feet ☐ 4000000000000000000 to 5000000000000000000 feet ☐ 5000000000000000000 to 6000000000000000000 feet ☐ 6000000000000000000 to 7000000000000000000 feet ☐ 7000000000000000000 to 8000000000000000000 feet ☐ 8000000000000000000 to 9000000000000000000 feet ☐ 9000000000000000000 to 10000000000000000000 feet ☐ 10000000000000000000 to 15000000000000000000 feet ☐ 15000000000000000000 to 20000000000000000000 feet ☐ 20000000000000000000 to 30000000000000000000 feet ☐ 30000000000000000000 to 40000000000000000000 feet ☐ 40000000000000000000 to 50000000000000000000 feet ☐ 50000000000000000000 to 60000000000000000000 feet ☐ 60000000000000000000 to 70000000000000000000 feet ☐ 70000000000000000000 to 80000000000000000000 feet ☐ 80000000000000000000 to 90000000000000000000 feet ☐ 90000000000000000000 to 100000000000000000000 feet ☐ 100000000000000000000 to 150000000000000000000 feet ☐ 150000000000000000000 to 200000000000000000000 feet ☐ 200000000000000000000 to 300000000000000000000 feet ☐ 300000000000000000000 to 400000000000000000000 feet ☐ 400000000000000000000 to 500000000000000000000 feet ☐ 500000000000000000000 to 600000000000000000000 feet ☐ 600000000000000000000 to 700000000000000000000 feet ☐ 700000000000000000000 to 800000000000000000000 feet ☐ 800000000000000000000 to 900000000000000000000 feet ☐ 900000000000000000000 to 1000000000000000000000 feet ☐ 1000000000000000000000 to 1500000000000000000000 feet ☐ 1500000000000000000000 to 2000000000000000000000 feet ☐ 2000000000000000000000 to 3000000000000000000000 feet ☐ 3000000000000000000000 to 4000000000000000000000 feet ☐ 4000000000000000000000 to 5000000000000000000000 feet ☐ 5000000000000000000000 to 6000000000000000000000 feet ☐ 6000000000000000000000 to 7000000000000000000000 feet ☐ 7000000000000000000000 to 8000000000000000000000 feet ☐ 8000000000000000000000 to 9000000000000000000000 feet ☐ 9000000000000000000000 to 10000000000000000000000 feet ☐ 10000000000000000000000 to 15000000000000000000000 feet ☐ 15000000000000000000000 to 20000000000000000000000 feet ☐ 20000000000000000000000 to 30000000000000000000000 feet ☐ 30000000000000000000000 to 40000000000000000000000 feet ☐ 40000000000000000000000 to 50000000000000000000000 feet ☐ 50000000000000000000000 to 60000000000000000000000 feet ☐ 60000000000000000000000 to 70000000000000000000000 feet ☐ 70000000000000000000000 to 80000000000000000000000 feet ☐ 80000000000000000000000 to 90000000000000000000000 feet ☐ 90000000000000000000000 to 100000000000000000000000 feet ☐ 100000000000000000000000 to 150000000000000000000000 feet ☐ 150000000000000000000000 to 200000000000000000000000 feet ☐ 200000000000000000000000 to 300000000000000000000000 feet ☐ 300000000000000000000000 to 400000000000000000000000 feet ☐ 400000000000000000000000 to 500000000000000000000000 feet ☐ 500000000000000000000000 to 600000000000000000000000 feet ☐ 600000000000000000000000 to 700000000000000000000000 feet ☐ 700000000000000000000000 to 800000000000000000000000 feet ☐ 800000000000000000000000 to 900000000000000000000000 feet ☐ 900000000000000000000000 to 1000000000000000000000000 feet ☐ 1000000000000000000000000 to 1500000000000000000000000 feet ☐ 1500000000000000000000000 to 2000000000000000000000000 feet ☐ 2000000000000000000000000 to 3000000000000000000000000 feet ☐ 3000000000000000000000000 to 4000000000000000000000000 feet ☐ 4000000000000000000000000 to 5000000000000000000000000 feet ☐ 5000000000000000000000000 to 6000000000000000000000000 feet ☐ 6000000000000000000000000 to 7000000000000000000000000 feet ☐ 7000000000000000000000000 to 8000000000000000000000000 feet ☐ 8000000000000000000000000 to 9000000000000000000000000 feet ☐ 9000000000000000000000000 to 10000000000000000000000000 feet ☐ 10000000000000000000000000 to 15000000000000000000000000 feet ☐ 15000000000000000000000000 to 20000000000000000000000000 feet ☐ 20000000000000000000000000 to 30000000000000000000000000 feet ☐ 30000000000000000000000000 to 40000000000000000000000000 feet ☐ 40000000000000000000000000 to 50000000000000000000000000 feet ☐ 50000000000000000000000000 to 60000000000000000000000000 feet ☐ 60000000000000000000000000 to 70000000000000000000000000 feet ☐ 70000000000000000000000000 to 80000000000000000000000000 feet ☐ 80000000000000000000000000 to 90000000000000000000000000 feet ☐ 90000000000000000000000000 to 100000000000000000000000000 feet ☐ 100000000000000000000000000 to 150000000000000000000000000 feet ☐ 150000000000000000000000000 to 200000000000000000000000000 feet ☐ 200000000000000000000000000 to 300000000000000000000000000 feet ☐ 300000000000000000000000000 to 400000000000000000000000000 feet ☐ 400000000000000000000000000 to 500000000000000000000000000 feet ☐ 500000000000000000000000000 to 600000000000000000000000000 feet ☐ 600000000000000000000000000 to 700000000000000000000000000 feet ☐ 700000000000000000000000000 to 800000000000000000000000000 feet ☐ 800000000000000000000000000 to 900000000000000000000000000 feet ☐ 900000000000000000000000000 to 1000000000000000000000000000 feet ☐ 1000000000000000000000000000 to 1500000000000000000000000000 feet ☐ 1500000000000000000000000000 to 2000000000000000000000000000 feet ☐

South Area Water Survey Results

Highlights from Survey

- ▶ 61 total responses
- ▶ 100% own their property
- ▶ 93% have a private well
- ▶ 39% report Iron being the main issue impacting water chemistry
- ▶ 40% very satisfied with current water supply
- ▶ 54% have backup generators to power well pump in event of a power failure
- ▶ 80% of primary wells were installed over 10 years ago
- ▶ 59% have not received maintenance upgrades or repairs in the last five years
- ▶ 33% have no interest connecting property to Brookfield Town water supply
- ▶ 33% are very interested in connecting to the Brookfield Town water supply
- ▶ 57% willing to pay \$30 or less/month for water service plus extension costs

Next Steps

- Final report submitted to EOEEA by June 30, 2019
 - Draft and final reports will be available on www.cmrpc.org
- Brookfield receives “MVP Community” certification
- Annual report to ensure that resilience is a community priority by incorporating MVP results into local comprehensive planning, grant applications, budgets, capital projects, and policies
- MVP Action Grants expected to be available in late 2019
- More information:

www.mass.gov/municipal-vulnerability-preparedness-mvp-program

www.communityresiliencebuilding.com

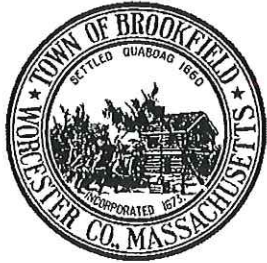


Thank You

Contact Us for More Information

- CMRPC: Andrew Loew, aloew@cmrpc.org or Ian McElwee, imcelwee@cmrpc.org
- Brookfield Board of Selectmen: Clarence Snyder, csnyder@brookfieldma.us
- Brookfield MVP CORE Team: Cathy LaRocca, laroccac@charter.net





Municipal Vulnerability Preparedness Listening Session

Town of Brookfield

June 04, 2019

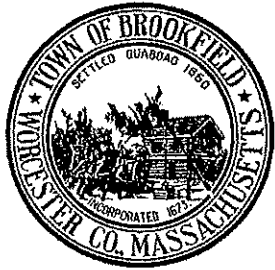
5:30 PM

Brookfield Town Hall

6 Central Street, Brookfield, MA 01506



NAME	AFFILIATION	EMAIL
KATIE WELLS	Resident 29 Gay Rd.	Katie.wells2@gmail.com
Cathy LaRocca	Grant Writer/Facilitator, Town of Brookfield	laroccac@charter.net
Danielle Kane	Resident 195 Rice Corner	dmlkane@charter.net
Chris Kane	Resident 195 Rice corner	
Saul S.	Troop 159	
Damian St. Peter	24 town Farm Road	
Noah Aubin	Troop 159 Brookfield	nfcc520@gmail.com
Mike G.	Troop 159	
Mike G.	Troop 159	
Shawn A. Pota	Troop 159	
Brian & Mason Oxman	Troop 159	



Municipal Vulnerability Preparedness Listening Session

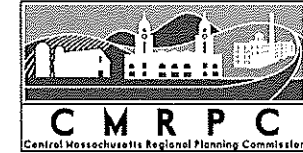
Town of Brookfield

June 04, 2019

5:30 PM

Brookfield Town Hall

6 Central Street, Brookfield, MA 01506



NAME	AFFILIATION / Address	EMAIL
Steve Gillis Robert R. Barnes	CITIZEN, Advisory Committee ADVISORY BOARD	steve.gillis77@gmail.com
Ken Cleveland	ADVISORY BOARD	KEN.CLEVELAND.AOL
Ronald Regan	ADVISORY BOARD	
Tom Regan	Advisory Board	tregan@monger.net
Geoffrey B. Clark	Citizen, Advisory Board (Brookfield)	jeff.b.clark85@gmail.com
Christa LeBrun	Advisory Board	ohristaclebrun@gmail.com
SHARON MATHONEY	PLANNING BOARD	SMATHONEY@BROOKFIELD.MA.US
Julie Gadbois	Citizen	juliegad4@gmail.com
Richard Lamareux	CITIZEN	
Steven Lamareux	Citizen	