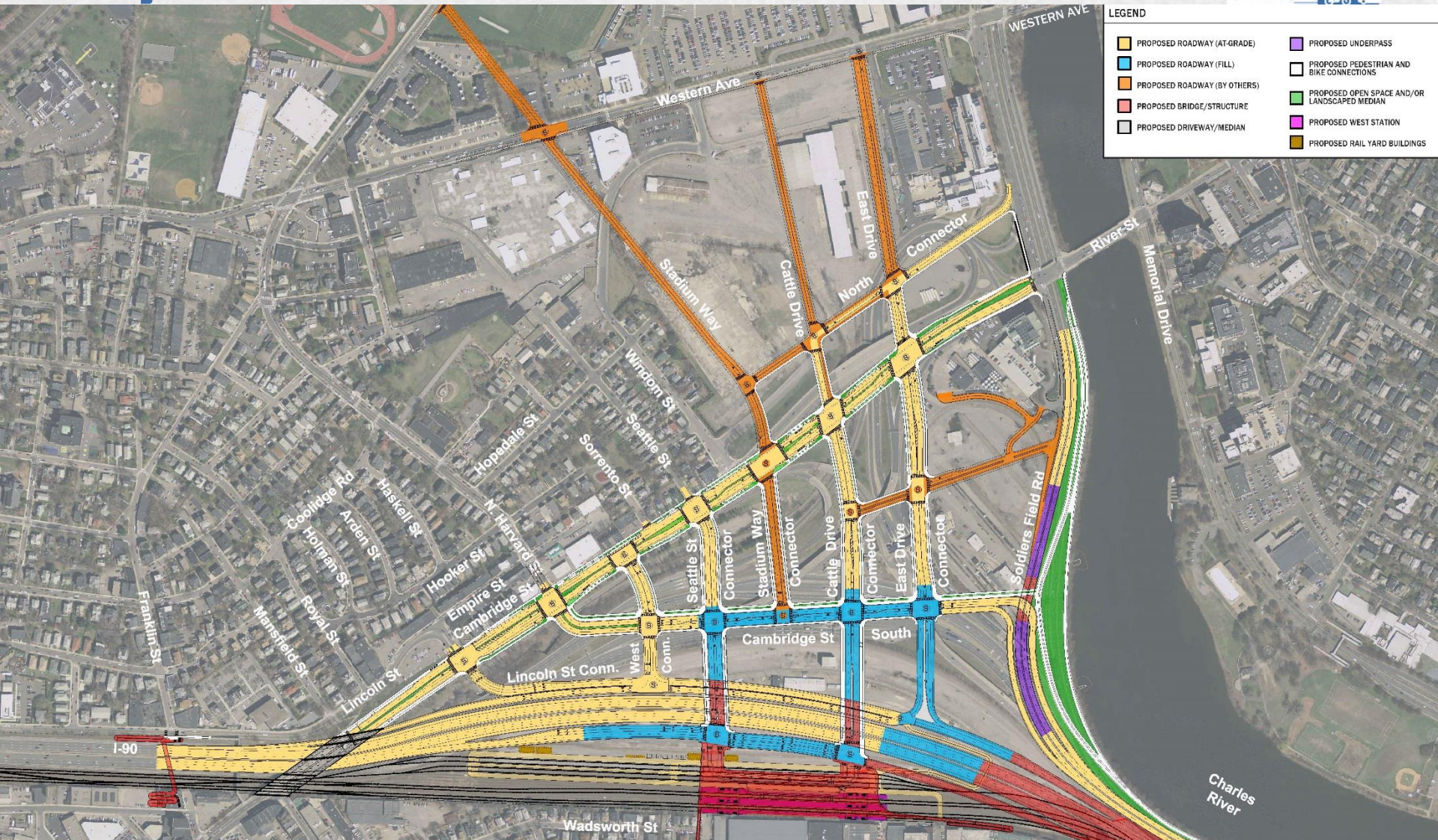


# Project Area



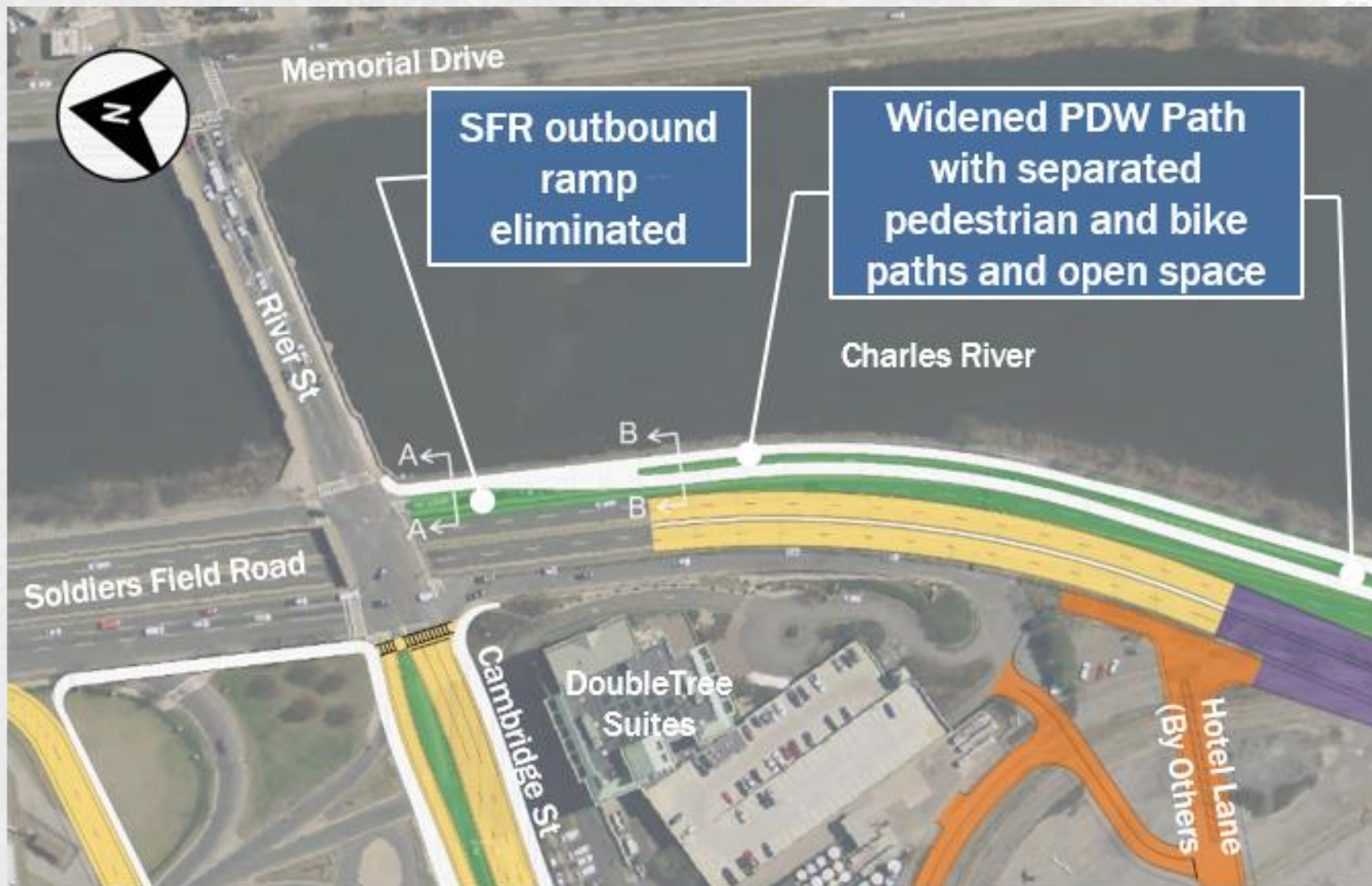


# SFR to River Street off-ramp Relocation



- Relocated off-ramp
  - Ramp shifts to S. Cambridge St. and East Drive
  - Most ramp traffic goes Left
  - Ramp right turn volume is low
  - 3 additional traffic lights
  - New route is longer but delay during peak period should be less due to improvements
- Wider PDW at the “Narrows”
- Reduced Ped/Bicycle Conflicts
- More Open Space for PDW
- See DEIR for Alternatives Review

# SFR off-ramp eliminated with PDW path expansion



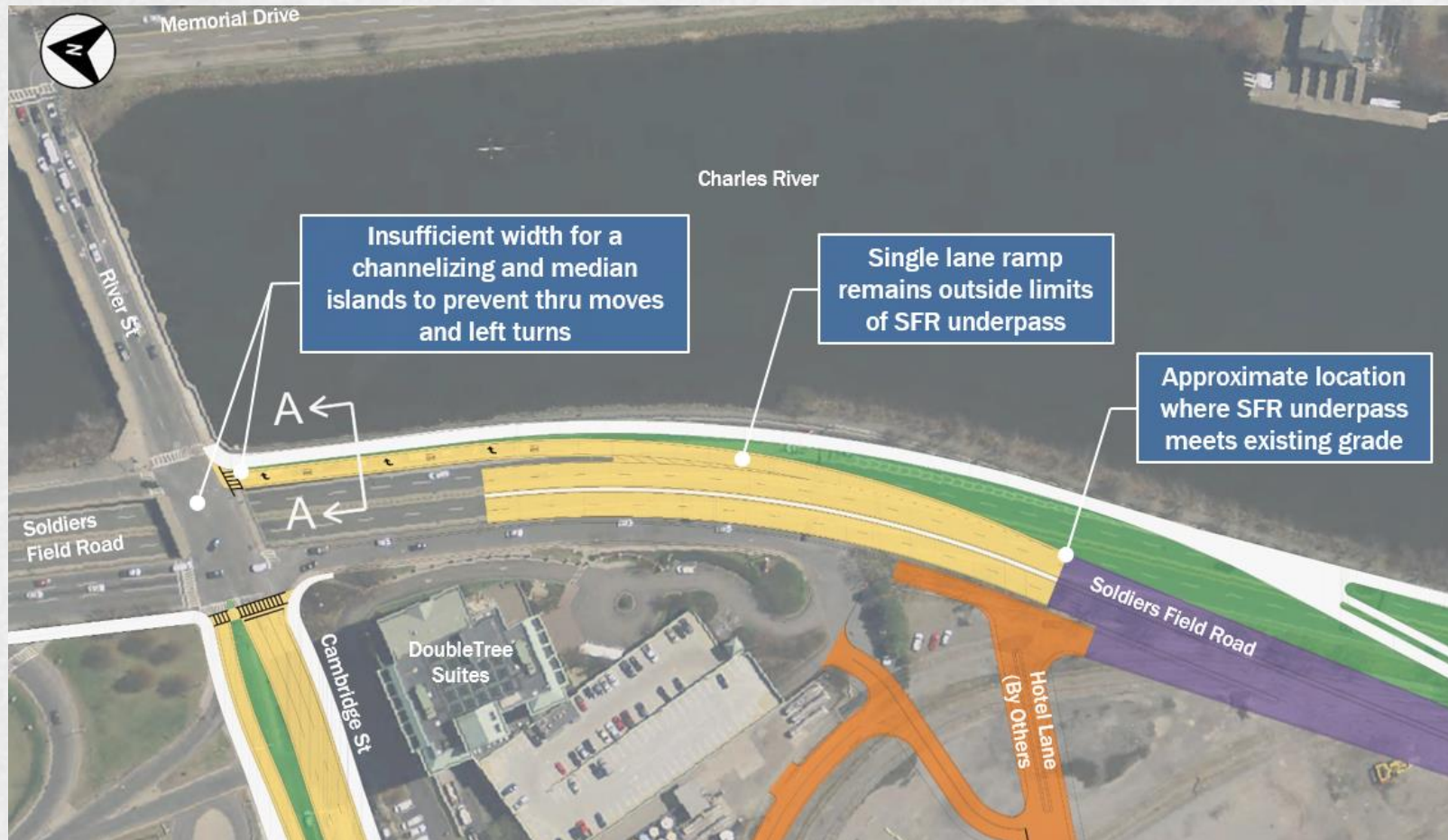


# SFR off-ramp with PDW path expansion

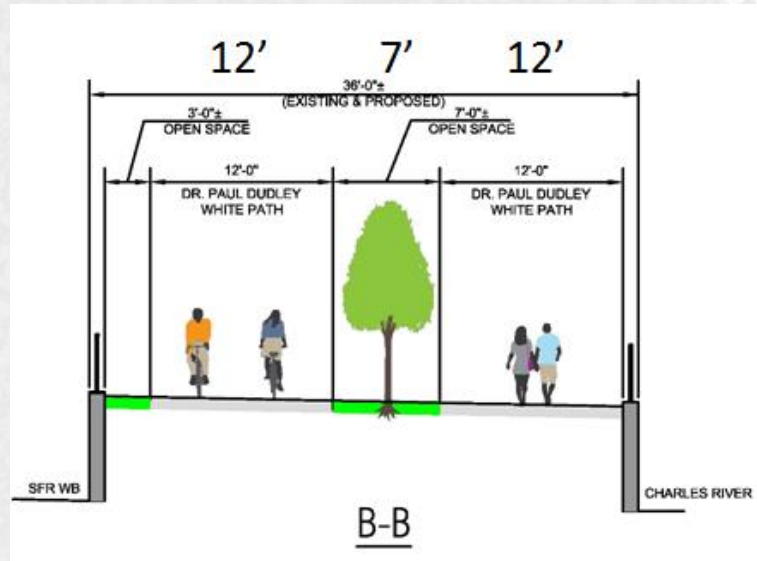
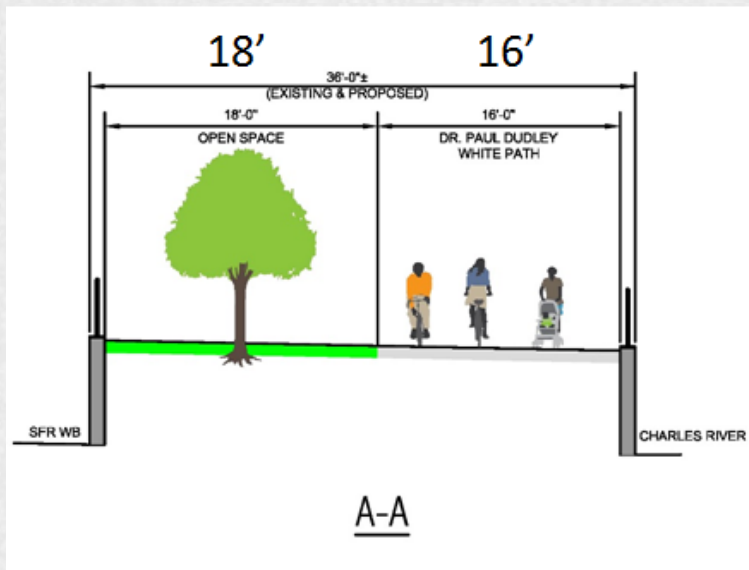




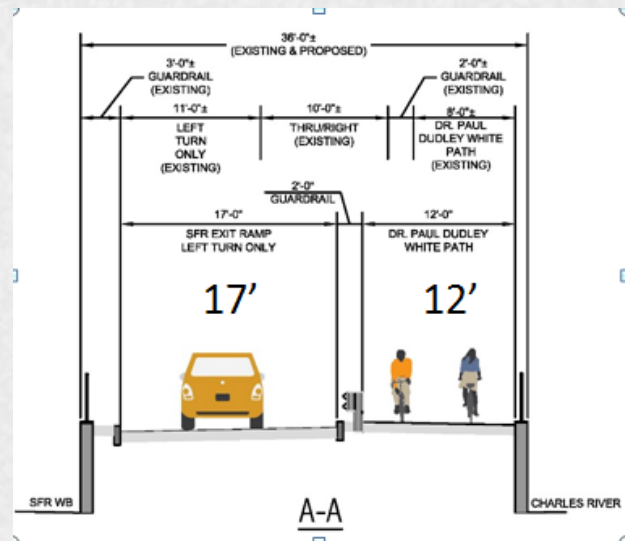
# SFR off-ramp as a single-lane



# PDW path expansion on SFR ramp



## SFR off-ramp with Single-lane

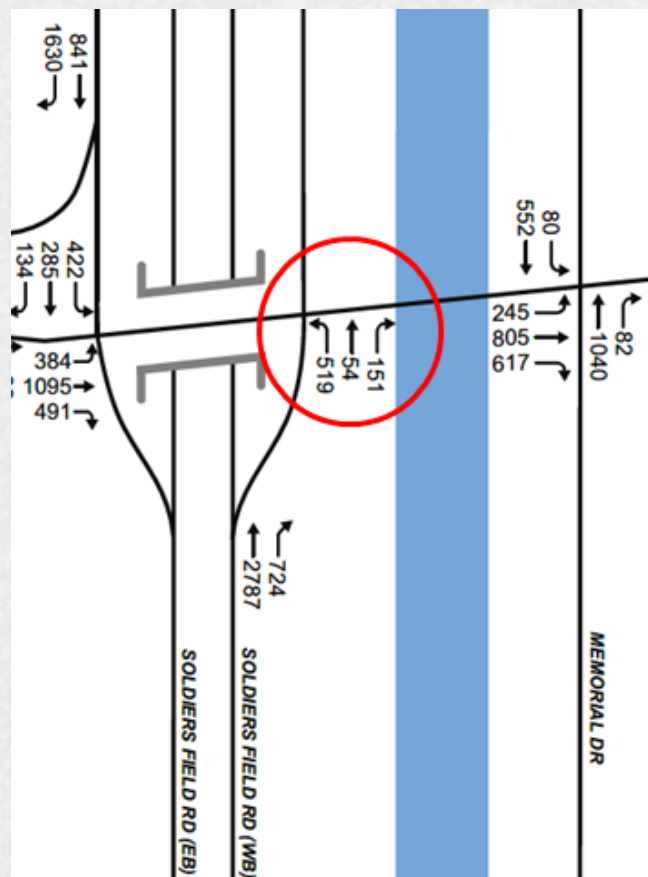
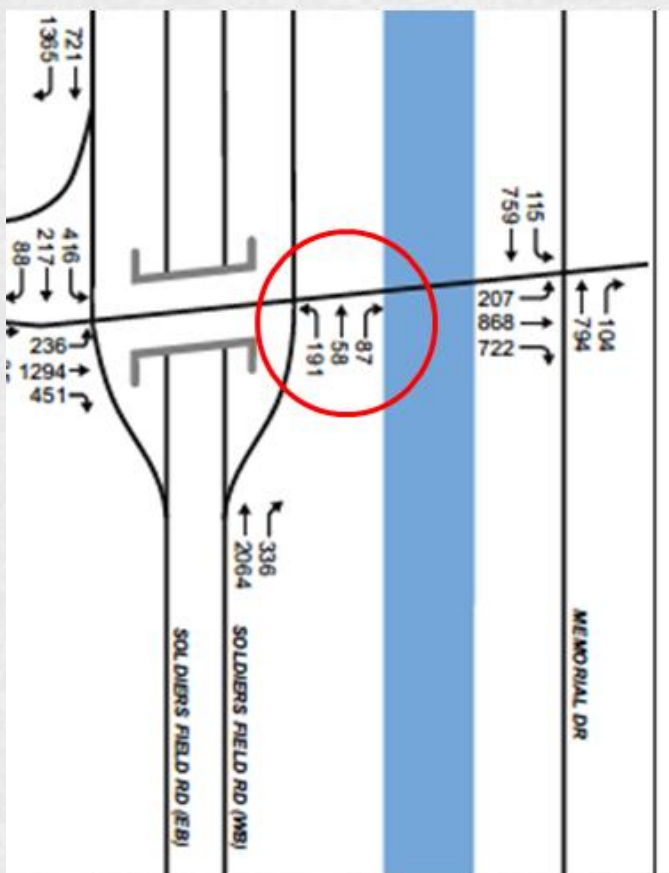


# SFR off-ramp to River Street - Vehicle Volumes



## AM Peak existing

## PM Peak existing



- 336 vehicles use the ramp in AM peak
- 87 of 336 turn right (26%) to River Street

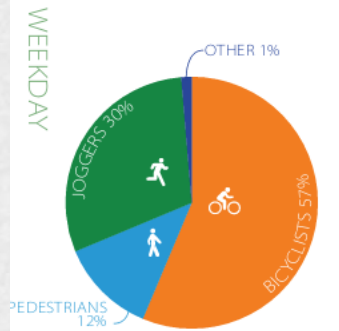
- 724 vehicles use the ramp in PM peak
- 151 of 724 turn right (21%) to River Street



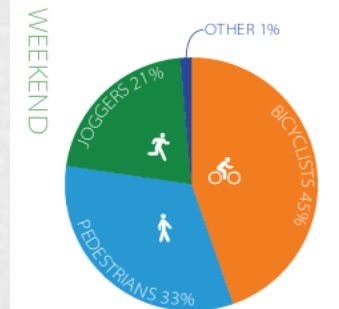
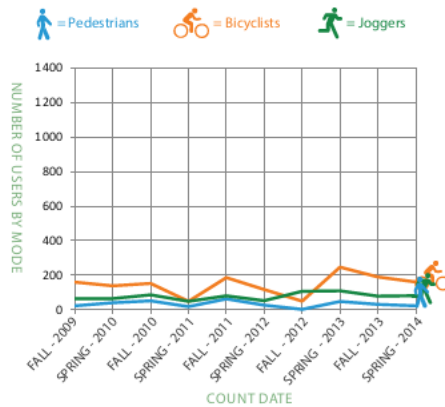
# PDW Basin South Bank Non-motorized Users (2 hour peak)

## MIDDLE BASIN SOUTH BANK

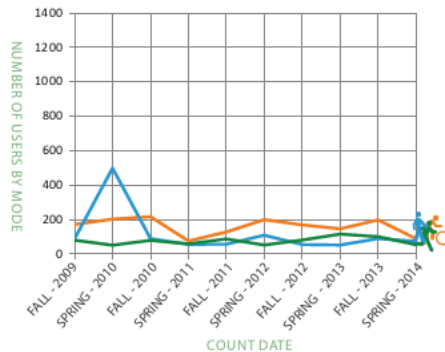
The Middle Basin South Bank Path travels along the southern bank of the esplanade on the Boston side of the Charles River. The site was counted on the southeast, Boston side of the Eliot Bridge. On average, bicyclists represented the majority of users on the weekdays (57%), and were the largest share of users during the weekends (45%). On average, the total number of non-motorized users counted at this location was 256 users on weekdays, and 356 users on weekends.



MODE SHARE AVERAGE OF THE 10 COUNTS  
Average Total Users (all modes) Weekday = 256



MODE SHARE AVERAGE OF THE 10 COUNTS  
Average Total Users (all modes) Weekend = 356



2-20 CHARLES RIVER BASIN PEDESTRIAN AND BICYCLE STUDY

- Weekday PM 300-400 users
  - 30% Joggers
  - 57% Bike
  - 12% Walk
  - 1% Other
- Weekend 300-400 users
  - 21% Joggers
  - 45% Bike
  - 33% Walk
  - 1% Other

Source: MassDOT/DCR; Charles River Basin Pedestrian and Bicycle Study, January 2015