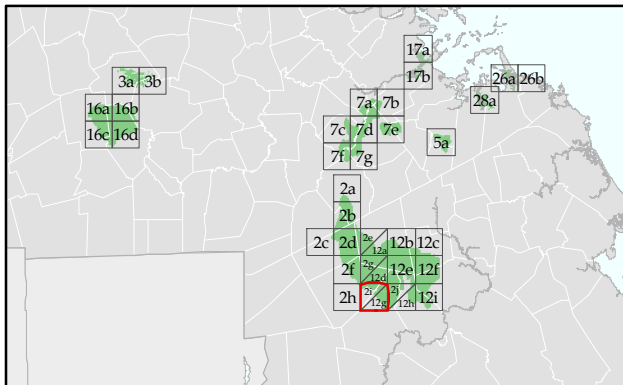


Map # **2i** **Canoe River Aquifer ACEC**  
 Map Tile 9 of 10 ACEC Designated 5/18/91 17,190 Acres



Massachusetts Department of Conservation and Recreation  
 Areas of Critical Environmental Concern (ACEC) Program

This map is intended to be used with the written boundary description contained in the ACEC designation document. The mapped boundary is not to be used by itself for definitive ACEC boundary delineation or regulatory interpretation. For review of site-specific projects within the ACEC boundary, determinations may need to be made in the field or in consultation with ACEC Program Staff.

For more information:  
[www.mass.gov/dcr/stewardship/acec](http://www.mass.gov/dcr/stewardship/acec)

**ACEC Boundaries by Type**

- Road/Rail based
- River based
- Wetland based
- Floodplain based
- Tide based
- Contour based
- Political boundary
- Property line based
- Other
- Digital update required

Areas not within an ACEC are shaded with a gray mask.

