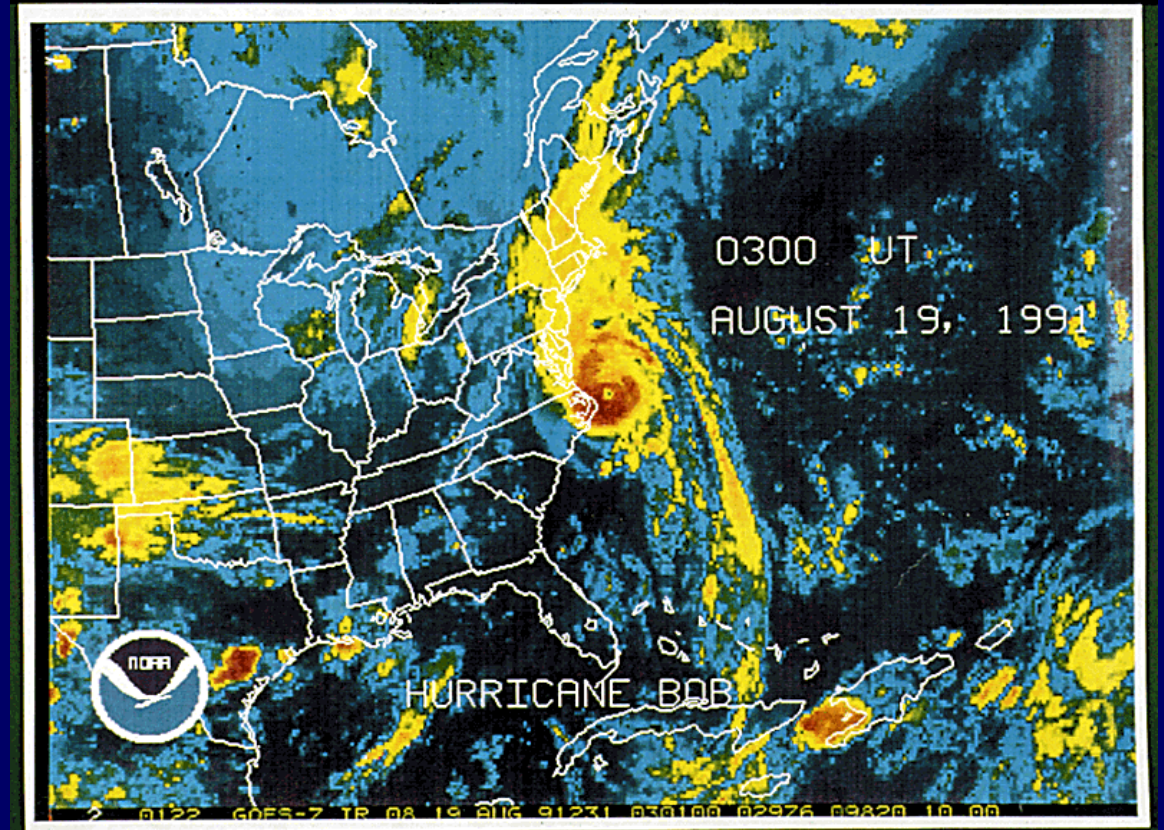




2016 Hurricane Seminar for the Media

CAPE COD EMERGENCY TRAFFIC PLAN



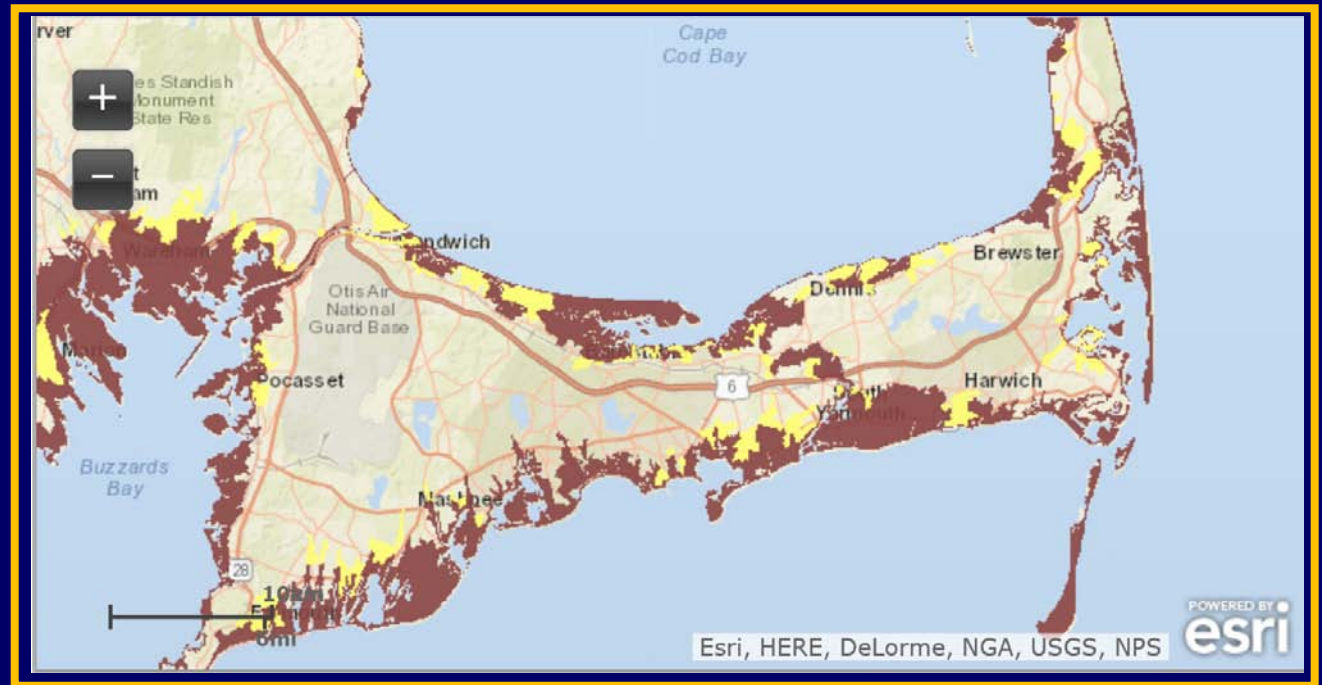
PLAN OBJECTIVES

- ❑ Facilitate egress of a high volume of traffic from Cape Cod in the event of a hurricane or other large scale threat or hazard
- ❑ Provide emergency shelter for occupants of vehicles who otherwise would be stranded on the road because the bridges have been closed due to high winds



NOT AN EVACUATION PLAN

- ❑ There are other evacuation tools and plans that facilitate personal and government decisions around:
 - Who should evacuate
 - When to initiate evacuations
 - Where evacuees may seek shelter
 - How to move evacuees who do not have personal vehicles



PLANNING PARTNERS

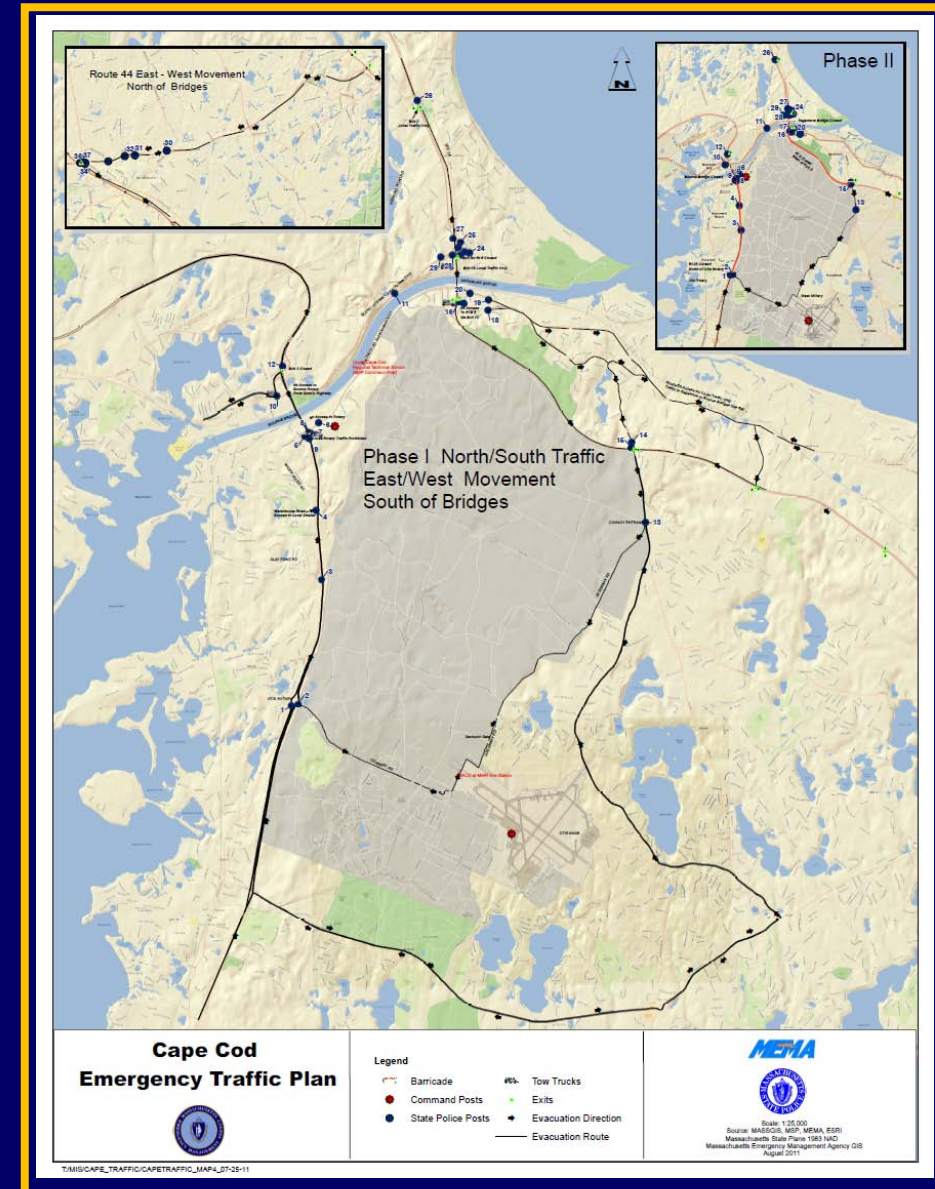
- MEMA
- STATE POLICE
- Mass DOT
- American Red Cross
- MA Dep't Public Health
- Cape Cod Medical Reserve Corps
- Int'l Fund for Animal Welfare
- Massachusetts National Guard
- U.S. Army Corps of Engineers
- Towns of Bourne and Sandwich
- Barnstable County Incident Management Team (for MACC)
- Upper Cape Cod Regional Technical High School
- WQRC Radio, 99.9 FM, Hyannis
- US Coast Guard

Plan Overview: Staging

- ❑ May require 12 plus hours:
 - Activate and staff command and coordination centers on Cape Cod
 - Preposition traffic management personnel
 - Preposition signs/signboards, tow trucks, etc.
 - Prepare Joint Base Cape Cod to serve as emergency shelter

Plan Overview: Traffic Management

- ❑ Prohibit access to Routes 6 & 28 at the southern (Cape side) bases of both bridges;
- ❑ Control access to the Scenic Highway, Sandwich Road and Route 6 to limit traffic attempting to merge into the main stream of off-Cape traffic;
- ❑ Allow MSP flexibility in the opening and closing of exits in order to expedite off-Cape traffic flow across the Sagamore and Bourne Bridges.
- ❑ Detour traffic to alternate roadways in order to reduce congestion

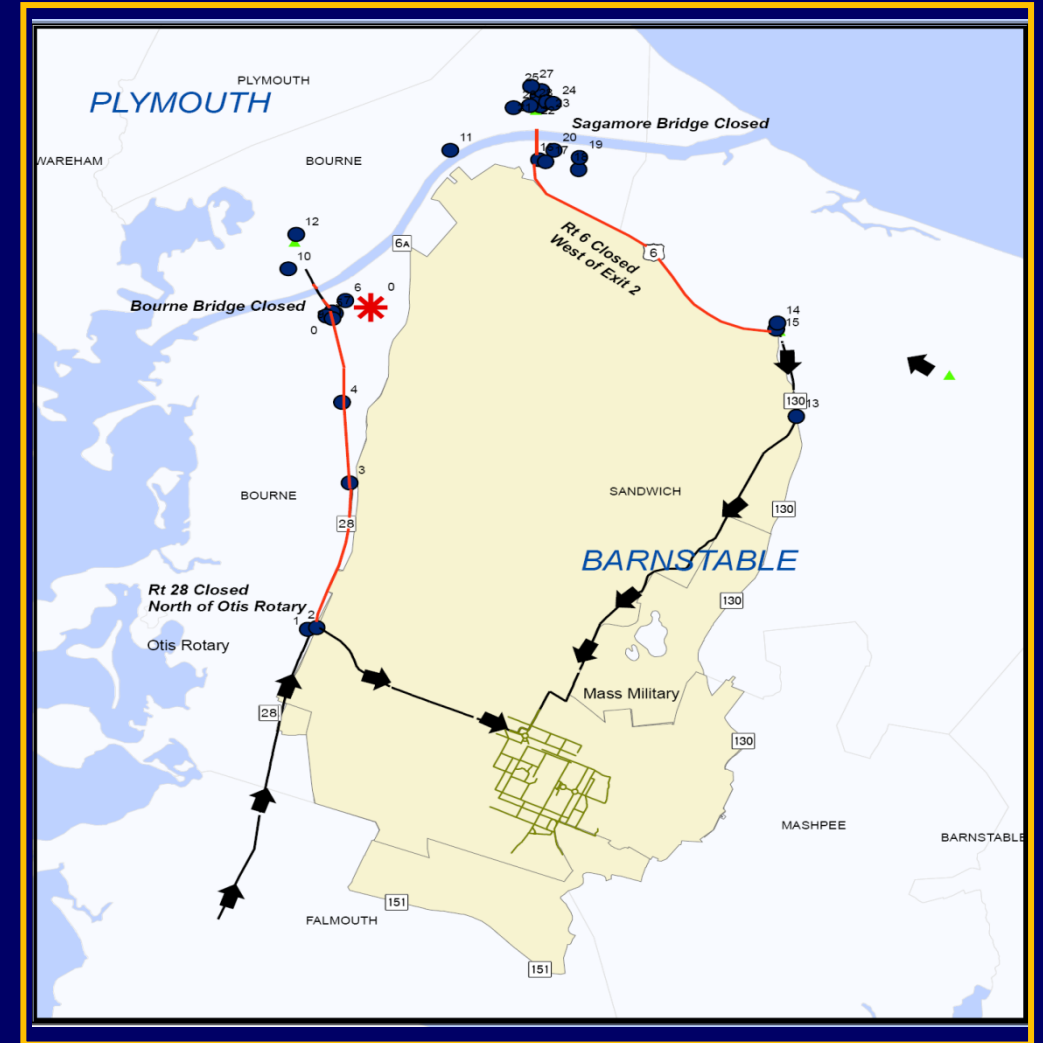


Plan Overview: Traffic Management

- ❑ Worst Case Scenario: may take up to 34 hours for all evacuating motorists to depart Cape Cod;
- ❑ Goal: all evacuating motorists off the Cape before onset of tropical storm force winds (which may be 12 hours before hurricane force winds).

Plan Overview: Emergency Shelter Operations

- ❑ Once weather conditions reach a point that safe travel is no longer possible, Army Corps will close the Bourne and Sagamore Bridges.
- ❑ Motorists still on Cape roadways will be directed to Joint Base Cape Cod from either Exit 2 on Route 6, or from the Otis Rotary on Route 28



Plan Overview: Emergency Shelter Operations

Occupancy

3000 plus

Partners:

 National Guard

 Red Cross

 MEMA

❑ Barnstable County Incident Mgt Team

Int'l Fund for Animal Welfare

☐ Cape Cod Medical Reserve Corps

 State Police

Department of Public Health



