



MASSACHUSETTS DEPARTMENT OF
CONSERVATION AND RECREATION



Resource Management Plans for DCR's Central Highlands District

Tuesday, June 7, 2022

A photograph of the Massachusetts State House, a large red brick building with a prominent white portico supported by columns and a large golden dome. The building is set against a clear blue sky. In the foreground, there is a green lawn, a black metal fence, and a dark SUV parked on the left. Two flagpoles are visible, one with the American flag and another with the state flag.

Commonwealth of Massachusetts

Governor
Charles D. Baker

Lieutenant Governor
Karyn E. Polito

Energy and Environmental Affairs Secretary
Bethany A. Card

Department of Conservation and Recreation Acting Commissioner
Stephanie C. Cooper

DCR MISSION

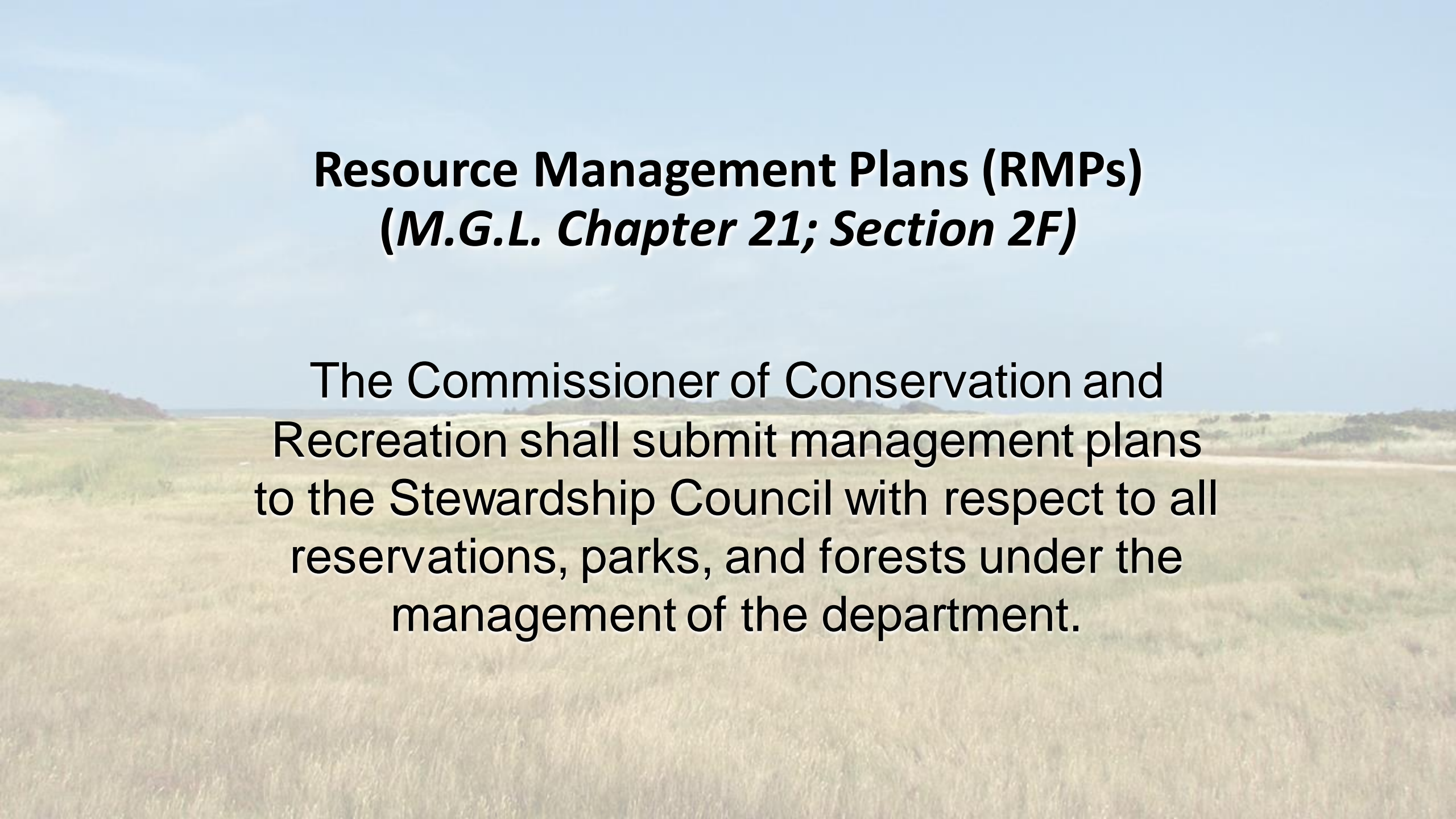
**To protect, promote and enhance our
common wealth of natural, cultural
and recreational resources
for the well-being of all.**

Meeting Logistics

- You will have the opportunity to submit comments through June 28, at:
 - DCR Public Comments <https://www.mass.gov/forms/dcr-public-comments>
- Two ways to offer comments during the meeting
 - Use chat feature
 - Raise your hand using the Zoom function, and you will be given permissions to unmute and speak.
- *Please note that this public meeting will be recorded; the recording will be a public record.*

Tonight's Meeting

- Resource Management Plans (RMPs)
- Central Highlands District Properties
- Your input on Central Highlands parks



Resource Management Plans (RMPs) ***(M.G.L. Chapter 21; Section 2F)***

The Commissioner of Conservation and Recreation shall submit management plans to the Stewardship Council with respect to all reservations, parks, and forests under the management of the department.

Required Elements

Said management plans shall:¹

- Include guidelines for the operation and land stewardship of the aforementioned reservations, parks, and forests;
- Provide for the protection and stewardship of natural and cultural resources; and
- Ensure consistency between recreation, resource protection, and sustainable forest management.

Contents include unique resources, potential uses, Land Stewardship Zoning analysis, and action recommendations.²

1. M.G.L. Chapter 21; Section 2F

2. 304 CMR 7.00

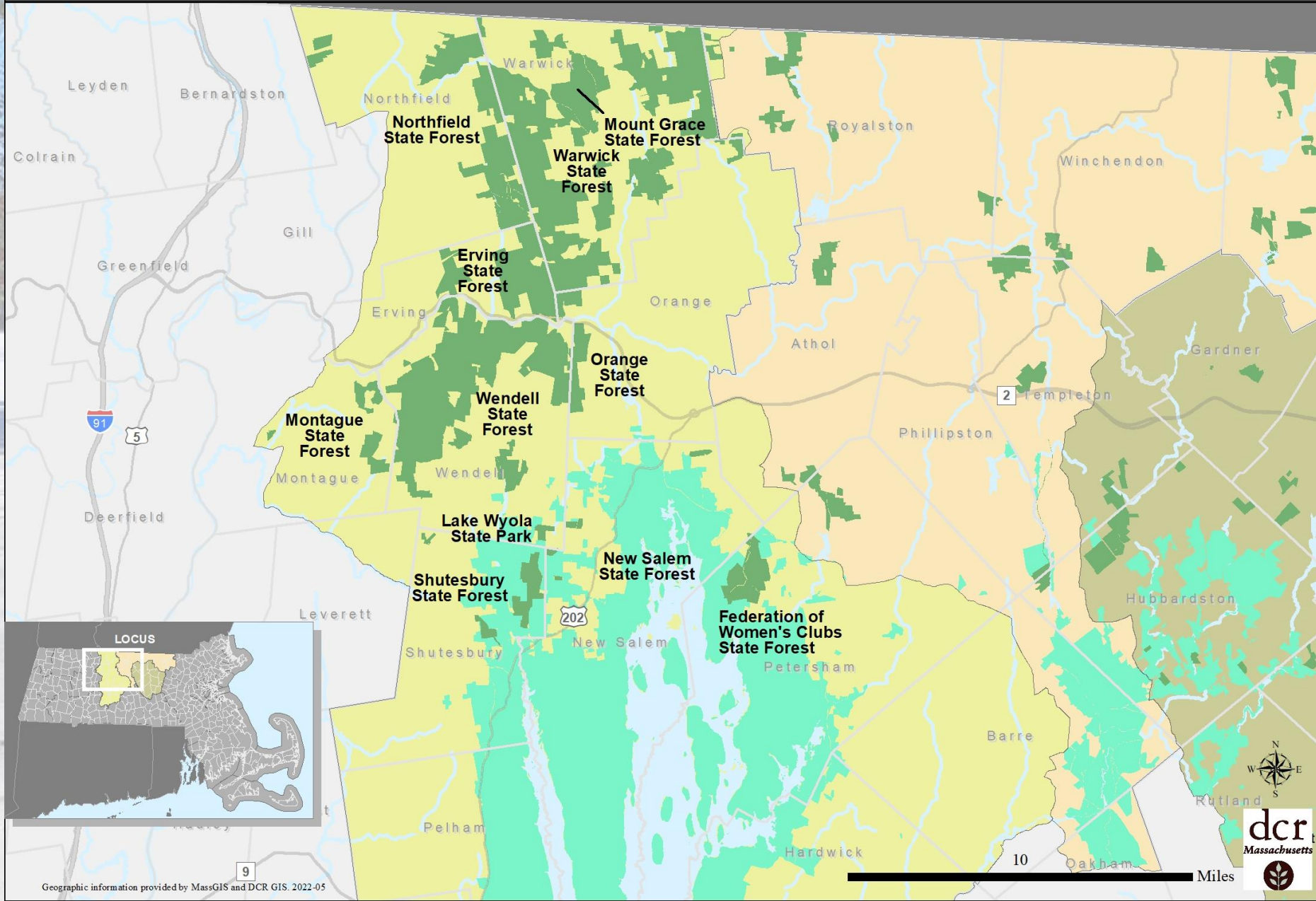
RMP - Main Body

- Introduction
- Park Identity and Significance (Unique resources)
- Defining Resources and Values (Unique resources)
- Interpretive Theme
- Visitor Experience
- Threats and Opportunities - Natural Resources, Cultural Resources, Recreation (Protection and stewardship of natural and cultural resources, unique resources, potential uses)
- Climate Exposure
- Applied Land Stewardship Zoning (Land Stewardship Zoning Analysis)
- Consistency Review (Ensure consistency)
- Management Recommendations (Action Recommendations)



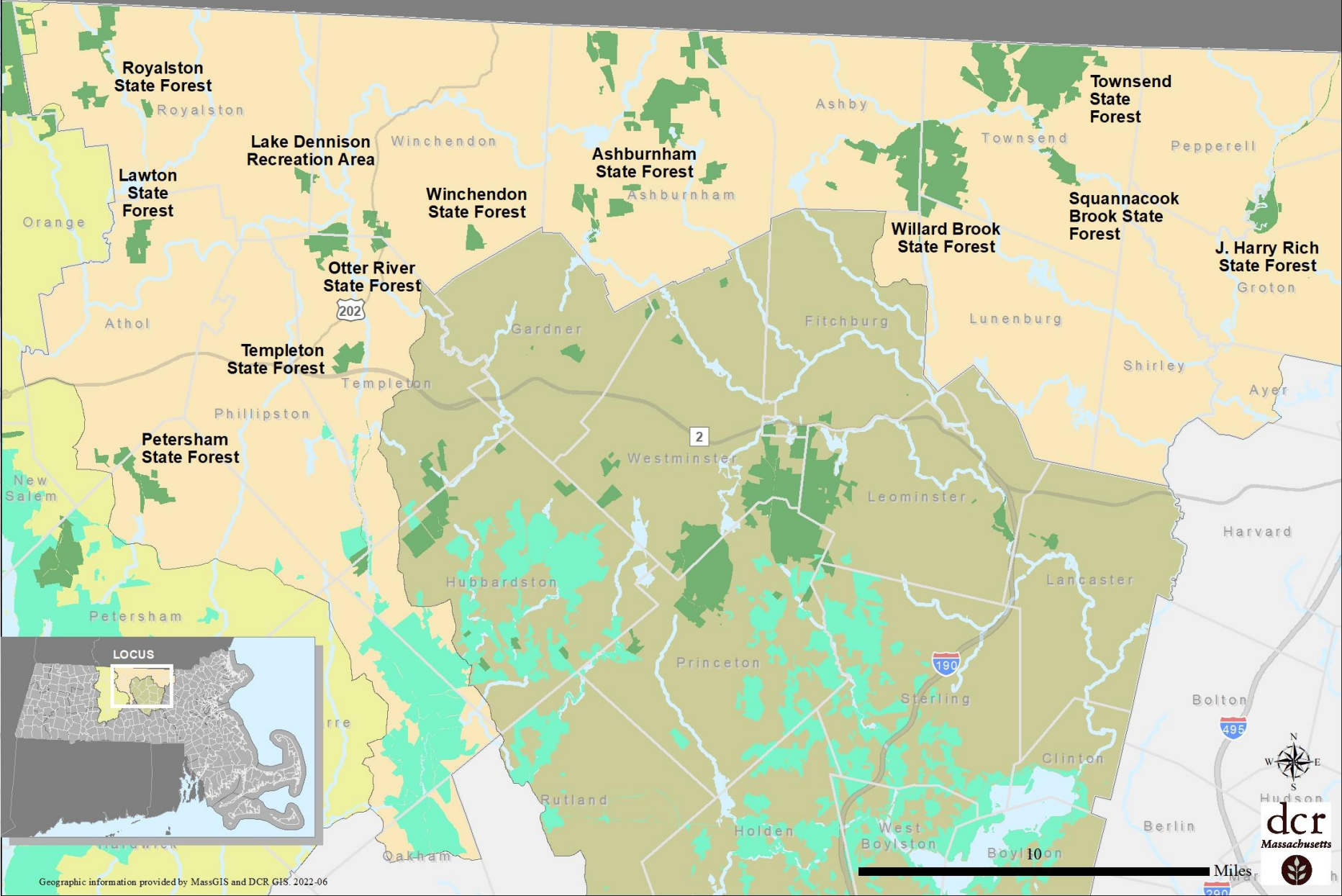
Erving Complex

Protected Openspace by Owner
■ DCR - Division of State Parks / DCRS & DFG
■ DCR - Division of Water Supply Protection



Otter River Complex

Protected Openspace by Owner
■ DCR - Division of State Parks / DCRS & DFG
■ DCR - Division of Water Supply Protection





Please Share Your Thoughts on Such Topics as:

1. What Facilities attract you to this park?
2. What Natural Features attract you to this park?
3. What Activities do you enjoy participating in?
4. What, if anything, prevents you from fully enjoying your visit to this park?
5. What activities, facilities, or services would make you feel more welcome or more satisfied with your experience in this park?
6. What is the biggest challenge facing this park?
7. What makes this park special to you?
8. Any other information about this park that you think is important for us to know.

Please Share Your Thoughts on Such Topics as:

1. **What Facilities attract you to this park?**
2. What Natural Features attract you to this park?
3. What Activities do you enjoy participating in?
4. What, if anything, prevents you from fully enjoying your visit to this park?
5. What activities, facilities, or services would make you feel more welcome or more satisfied with your experience in this park?
6. What is the biggest challenge facing this park?
7. What makes this park special to you?
8. Any other information about this park that you think is important for us to know.

Please Share Your Thoughts on Such Topics as:

- 1. What Facilities attract you to this park?**
- 2. What Natural Features attract you to this park?**
3. What Activities do you enjoy participating in?
4. What, if anything, prevents you from fully enjoying your visit to this park?
5. What activities, facilities, or services would make you feel more welcome or more satisfied with your experience in this park?
6. What is the biggest challenge facing this park?
7. What makes this park special to you?
8. Any other information about this park that you think is important for us to know.

Please Share Your Thoughts on Such Topics as:

- 1. What Facilities attract you to this park?**
- 2. What Natural Features attract you to this park?**
- 3. What Activities do you enjoy participating in?**
4. What, if anything, prevents you from fully enjoying your visit to this park?
5. What activities, facilities, or services would make you feel more welcome or more satisfied with your experience in this park?
6. What is the biggest challenge facing this park?
7. What makes this park special to you?
8. Any other information about this park that you think is important for us to know.

Please Share Your Thoughts on Such Topics as:

- 1. What Facilities attract you to this park?**
- 2. What Natural Features attract you to this park?**
- 3. What Activities do you enjoy participating in?**
- 4. What, if anything, prevents you from fully enjoying your visit to this park?**
5. What activities, facilities, or services would make you feel more welcome or more satisfied with your experience in this park?
6. What is the biggest challenge facing this park?
7. What makes this park special to you?
8. Any other information about this park that you think is important for us to know.

Please Share Your Thoughts on Such Topics as:

- 1. What Facilities attract you to this park?**
- 2. What Natural Features attract you to this park?**
- 3. What Activities do you enjoy participating in?**
- 4. What, if anything, prevents you from fully enjoying your visit to this park?**
- 5. What activities, facilities, or services would make you feel more welcome or more satisfied with your experience in this park?**
- 6. What is the biggest challenge facing this park?**
- 7. What makes this park special to you?**
- 8. Any other information about this park that you think is important for us to know.**

Please Share Your Thoughts on Such Topics as:

- 1. What Facilities attract you to this park?**
- 2. What Natural Features attract you to this park?**
- 3. What Activities do you enjoy participating in?**
- 4. What, if anything, prevents you from fully enjoying your visit to this park?**
- 5. What activities, facilities, or services would make you feel more welcome or more satisfied with your experience in this park?**
- 6. What is the biggest challenge facing this park?**
- 7. What makes this park special to you?**
- 8. Any other information about this park that you think is important for us to know.**

Please Share Your Thoughts on Such Topics as:

- 1. What Facilities attract you to this park?**
- 2. What Natural Features attract you to this park?**
- 3. What Activities do you enjoy participating in?**
- 4. What, if anything, prevents you from fully enjoying your visit to this park?**
- 5. What activities, facilities, or services would make you feel more welcome or more satisfied with your experience in this park?**
- 6. What is the biggest challenge facing this park?**
- 7. What makes this park special to you?**
- 8. Any other information about this park that you think is important for us to know.**

Please Share Your Thoughts on Such Topics as:

- 1. What Facilities attract you to this park?**
- 2. What Natural Features attract you to this park?**
- 3. What Activities do you enjoy participating in?**
- 4. What, if anything, prevents you from fully enjoying your visit to this park?**
- 5. What activities, facilities, or services would make you feel more welcome or more satisfied with your experience in this park?**
- 6. What is the biggest challenge facing this park?**
- 7. What makes this park special to you?**
- 8. Any other information about this park that you think is important for us to know.**

Public Input

- 1. What Facilities attract you to this park?**
- 2. What Natural Features attract you to this park?**
- 3. What Activities do you enjoy participating in?**
- 4. What, if anything, prevents you from fully enjoying your visit to this park?**
- 5. What activities, facilities, or services would make you feel more welcome or more satisfied with your experience in this park?**
- 6. What is the biggest challenge facing this park?**
- 7. What makes this park special to you?**
- 8. Any other information about this park that you think is important for us to know.**



Additional Information

- Recording and tonight's slide deck will be available at:
www.mass.gov/dcr/past-public-meetings
- If you have comments on this project:
 - *Submit online:* www.mass.gov/dcr/public-comment
 - *Deadline: Tuesday, June 28, 2022*
Please note: the contents of comments submitted to DCR, including your name, town and zip code, will be posted on DCR's website. Additional contact information provided, notably email address, will only be used for outreach on future updates to the subject project or property.
- If you wish to subscribe to a DCR general information or project-related listserv: contact DCR's Office of Community Relations via email at mass.parks@mass.gov



Take Our Central Highlands Survey!

- Go to the DCR Resource Management Plans page (<https://www.mass.gov/lists/resource-management-plans>)
- Look for Projects Underway - Select “**Central Highlands District RMPs**” (<https://www.mass.gov/service-details/central-highlands-district-rmps>)
- On the “Central Highlands District RMPs” page, look for the “[visitor survey](#)” link
- Click the “[visitor survey](#)” link and take the survey
- Thank you!

