

Charles River Dam Road (Craigie Bridge)

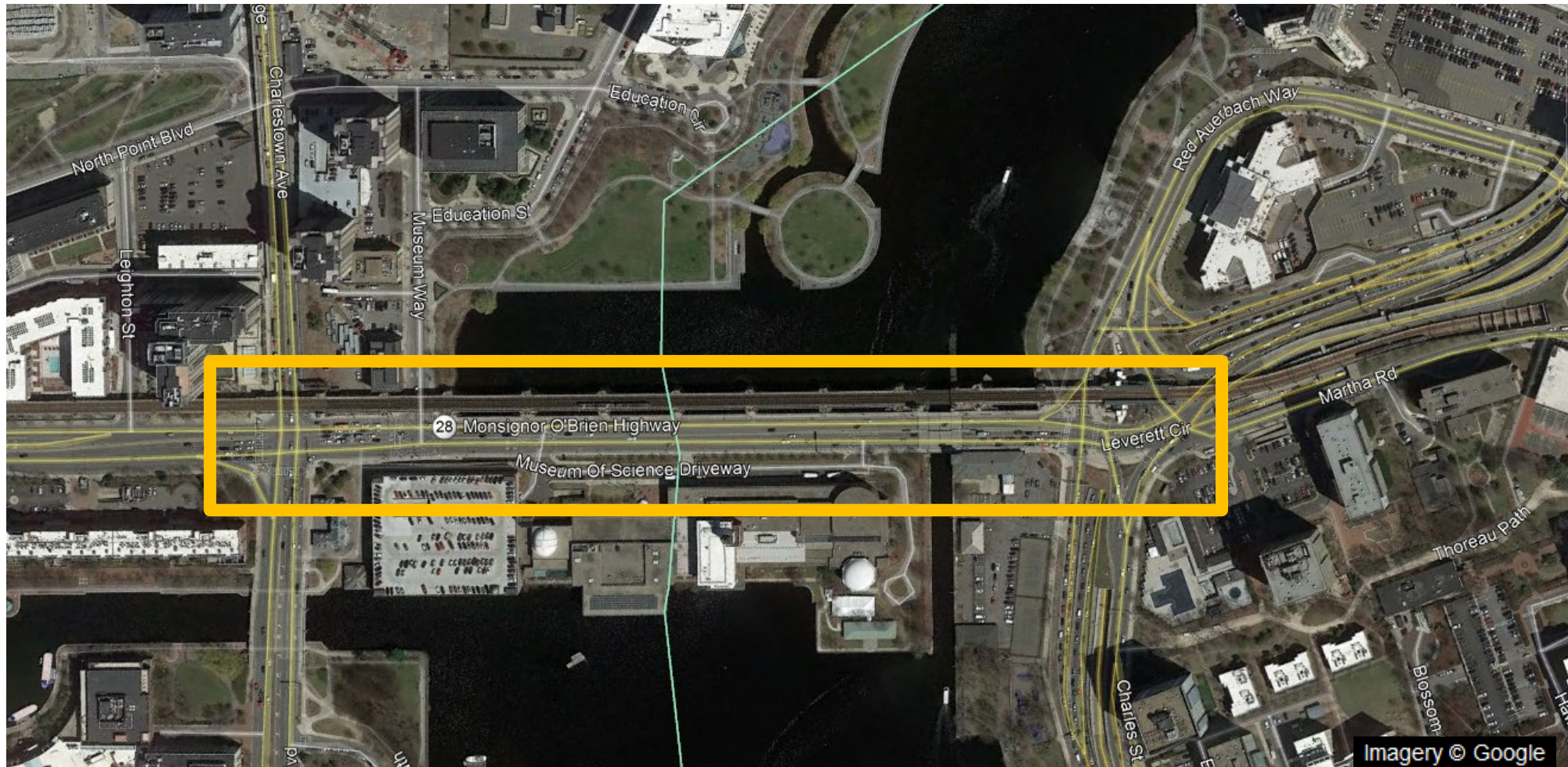
MassDOT Highway Division

May 1, 2019

Purpose of this Meeting

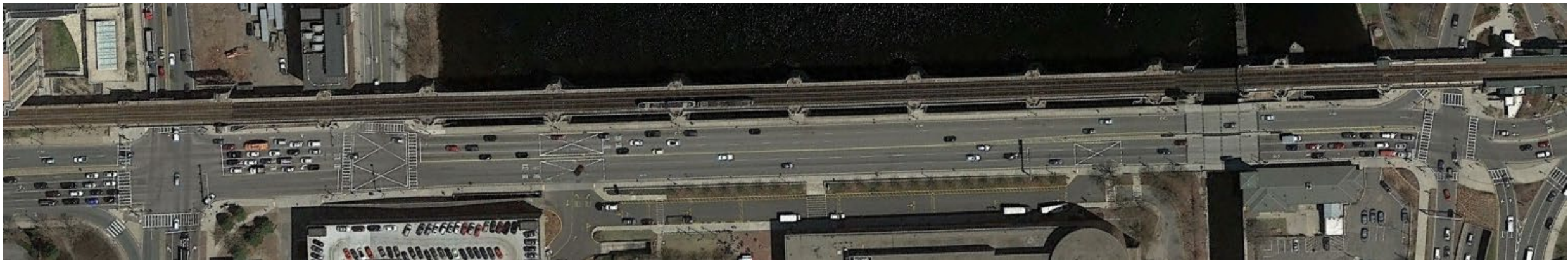
- Brief overview of current conditions
- Review what has occurred since our last meeting
- Present our recommendations for improvements
- Discuss the implementation plan

Project Area



Current Conditions

- No dedicated bike facilities
- People are biking in travel lanes and on the sidewalks
- Sidewalks on both sides
- 6 vehicular travel lanes
- No defined turn lane into Museum of Science



Current Conditions

- Segment between Land Boulevard and Leverett Circle
- Posted speed limit: 25 MPH
- Pavement width: 64 feet
- AADT: 37,500 (September 2018)
- Two bridges with set widths:
 - Craigie Drawbridge
 - Charles River Dam
- 150 school buses access the Museum of Science each day



Imagery © Google

What Has Been Happening?

- First Public Meeting - 12/18/18
- Road Safety Audit – 1/17/19
- Cambridge Crossing Coordination Meeting – 3/15/19
- Design Review Meetings with District 6 – 3/18/19 & 4/1/19
- On-Site Walkthrough – 4/12/19
- Jurisdictional Coordination Meeting – 4/23/19

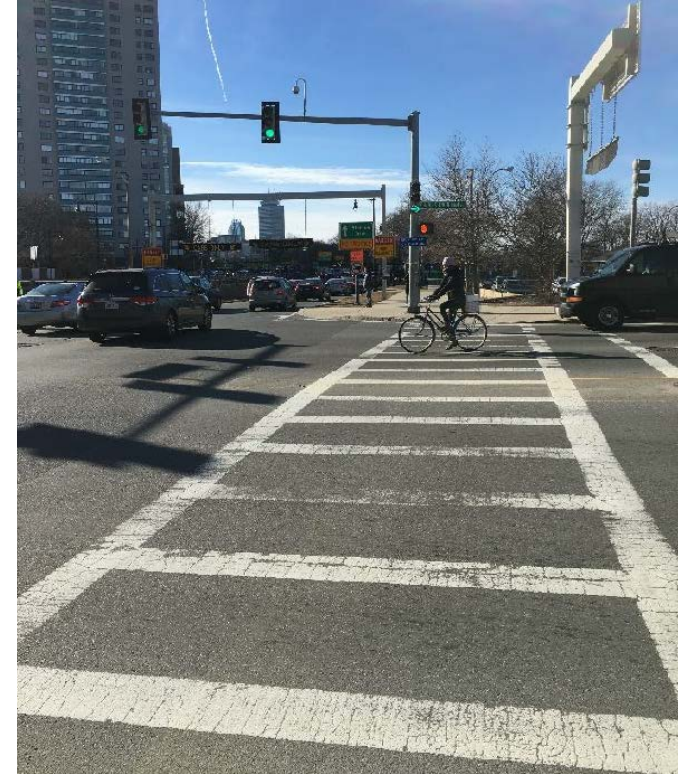
What We Heard From You

- Safety concerns for people walking and cycling along the corridor.
- Support for separated bicycle lanes.
- Request for traffic calming measures.
- Desire for improved bicycle connections to nearby paths.



Road Safety Audit Findings

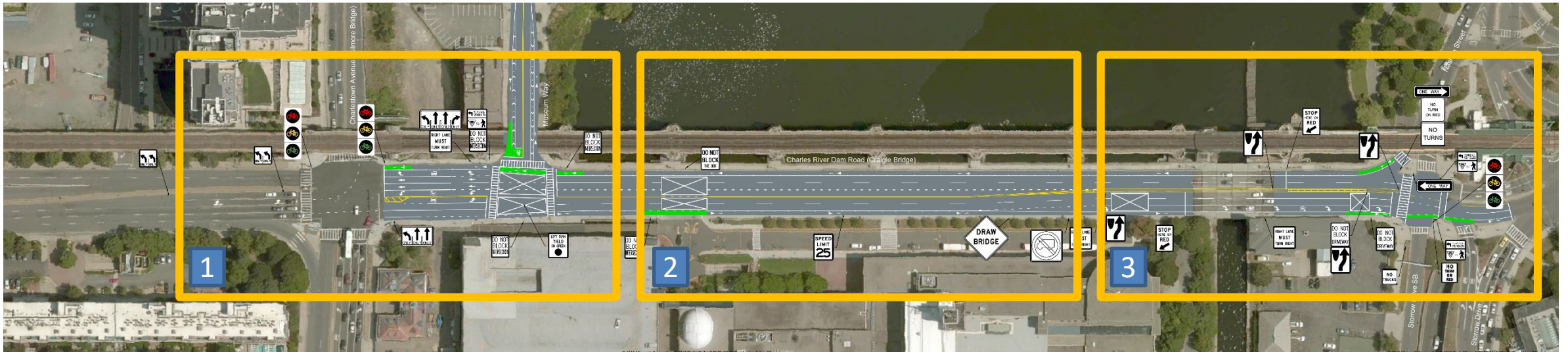
- Conducted on 1/17/2019
- Repaint faded pavement markings to improve visibility
- Install dashed guide lines for left-turn vehicular movements
- Evaluate feasibility of adding separated bike facilities
- Ensure sidewalks meet ADA requirements
- Install advanced lane assignment signage on all approaches
- Evaluate phasing modification to eliminate user conflicts



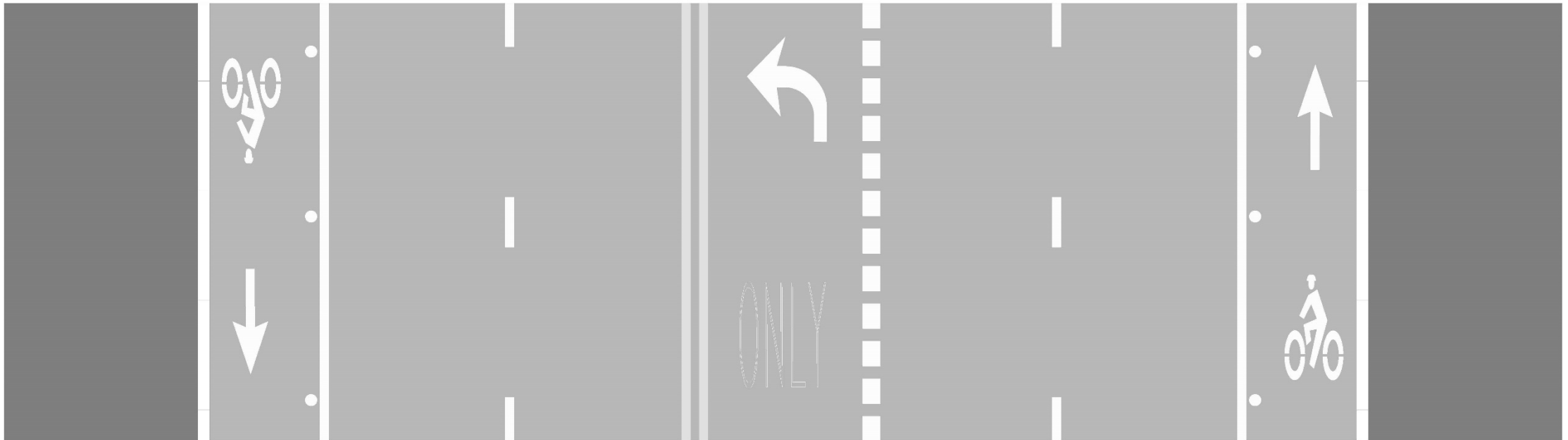
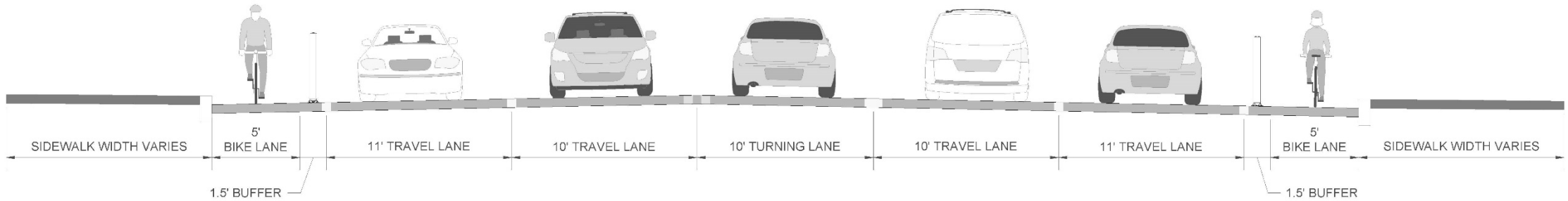
*Road Safety Audit examines existing conditions regarding safety by an independent, multi-disciplinary team

Design Overview

- Adds continuous bike lanes, separated where feasible
- Maintains existing sidewalks
- Removes 1 travel lane (5 total vehicle travel lanes)
- Provides 2 travel lanes in each direction

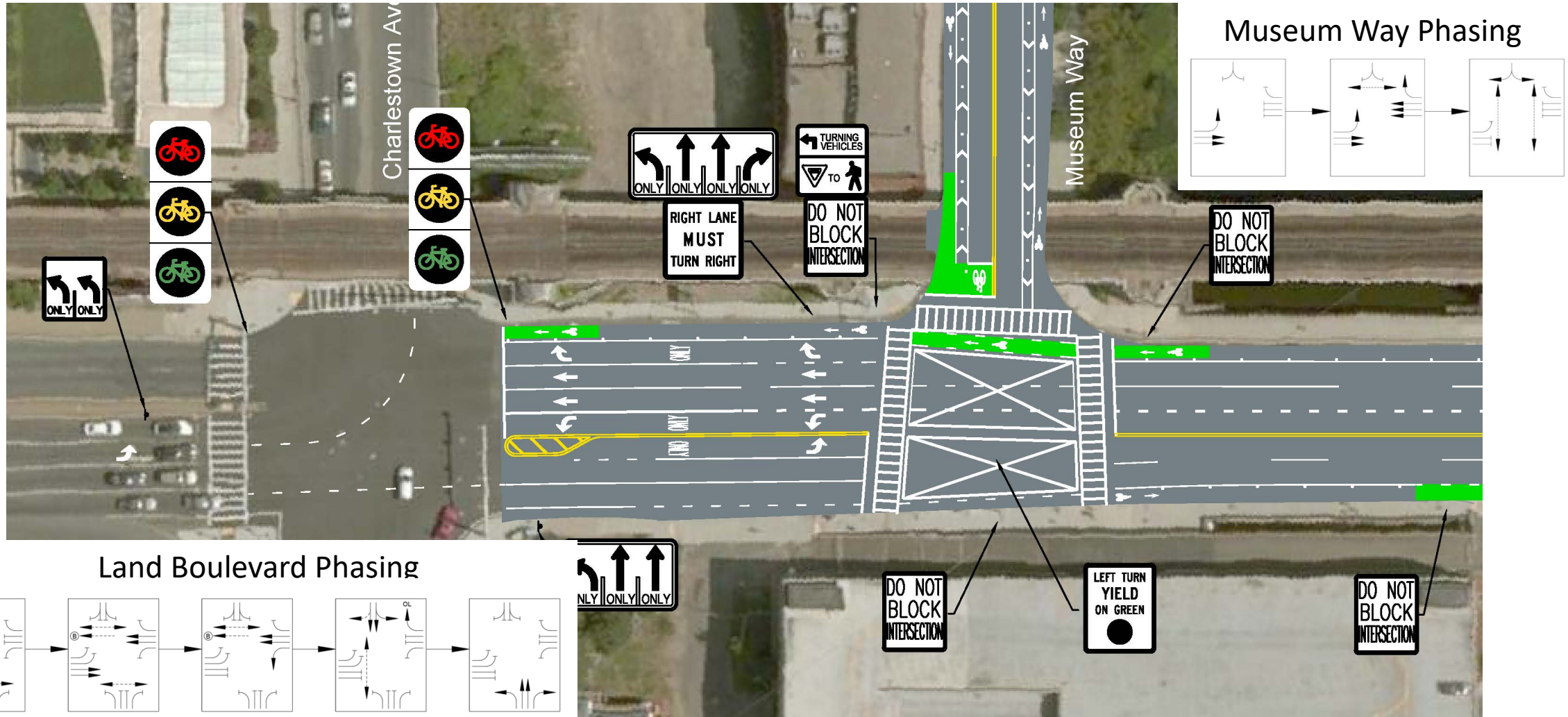


Typical Cross-Section



*Note cross-section varies along corridor

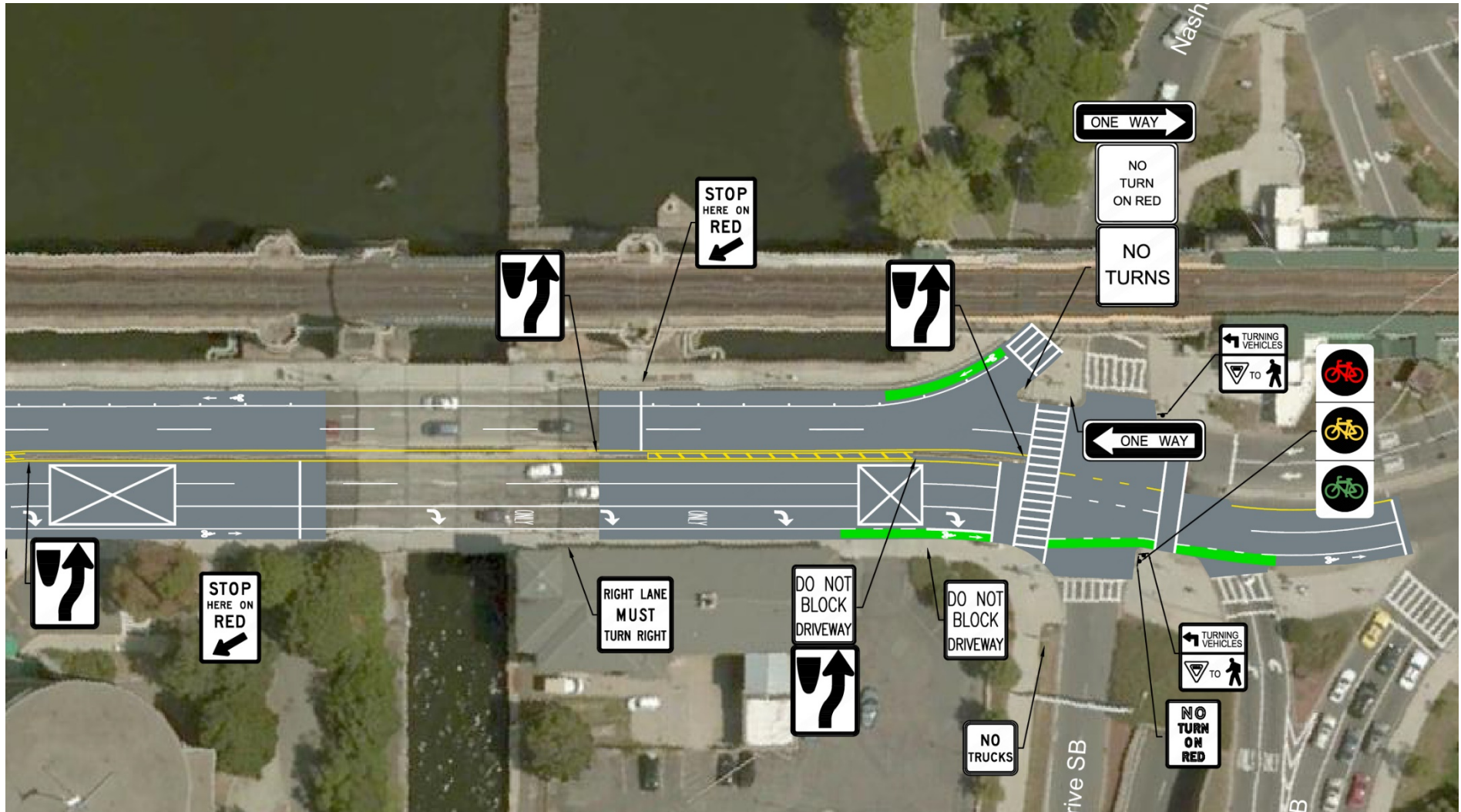
Land Blvd & Museum Way



Charles River Dam Road



Leverett Circle

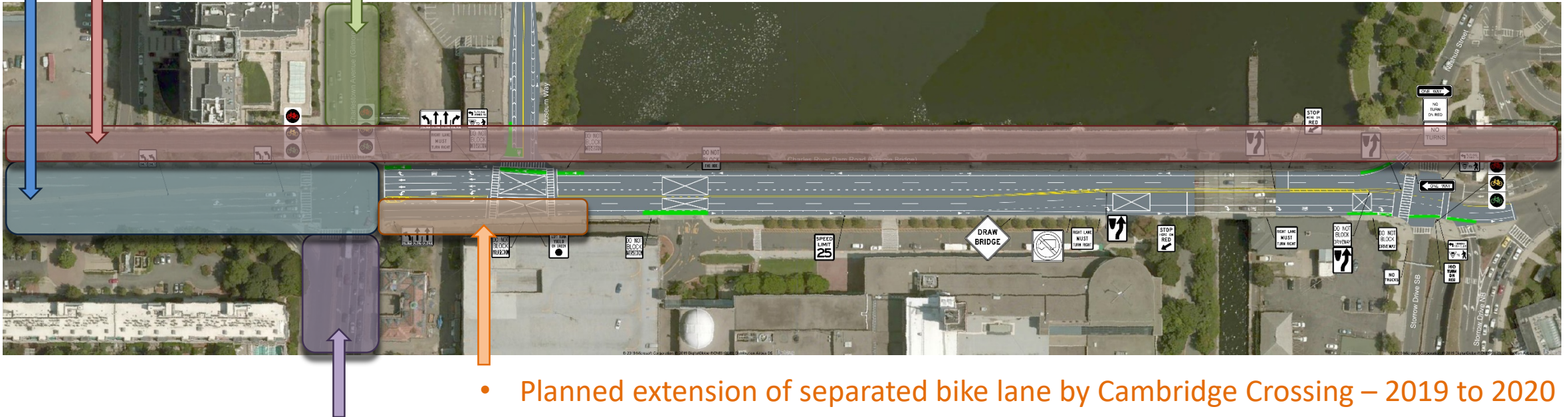


Implementation Plan

- Implementation anticipated to begin June 2019
- Phase 1: Mill and overlay, pavement striping, signs, and flexposts
- Phase 2: Signal improvements
 - May require interim bike lane routing

Other Area Improvements

- Planned extension of improvements from Land Blvd towards Lechmere Station by Cambridge Crossing – 2018 to 2021
 - Green Line viaduct repairs – 2020 to 2021 (Substitute bussing will occur along this corridor)
 - Gilmore Bridge, roadway, and utility work - May 2019



- Planned extension of separated bike lane by Cambridge Crossing – 2019 to 2020
- Resurfacing of Land Blvd by DCR – 2019

Green Line Extension

- Work at Lechmere Station will require a bus diversion
- The MBTA anticipates around 20 buses per hour
- Construction and bus diversion is planned from 2020 to 2021

