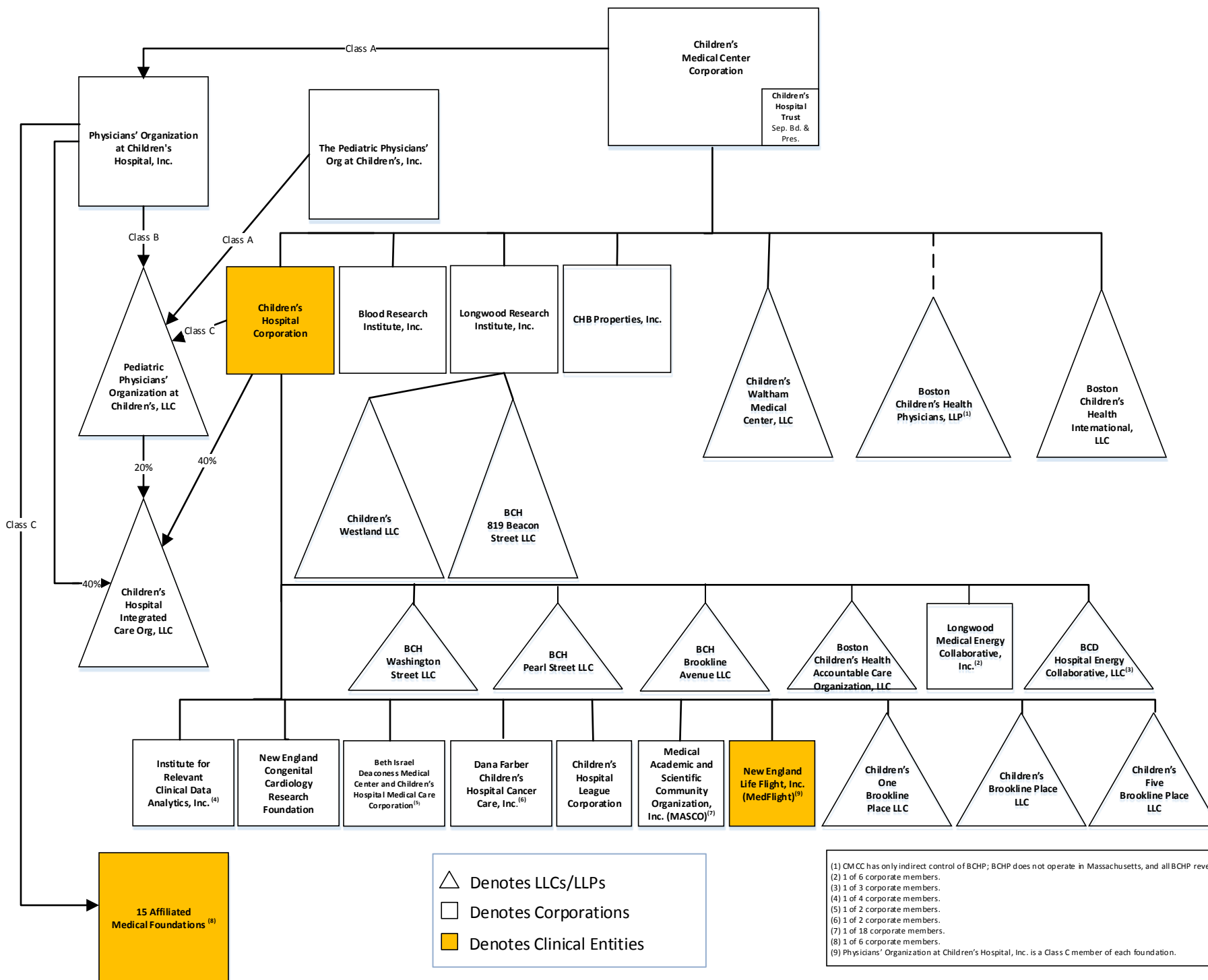


CHILDREN'S MEDICAL CENTER CORPORATION

CORPORATE ORGANIZATION

As of 1/1/2019



- △ Denotes LLCs/LLPs
- Denotes Corporations
- Denotes Clinical Entities

(1) CMCC has only indirect control of BChP; BChP does not operate in Massachusetts, and all BChP revenue is generated outside of Massachusetts.
 (2) 1 of 6 corporate members.
 (3) 1 of 3 corporate members.
 (4) 1 of 4 corporate members.
 (5) 1 of 2 corporate members.
 (6) 1 of 2 corporate members.
 (7) 1 of 18 corporate members.
 (8) 1 of 6 corporate members.
 (9) Physicians' Organization at Children's Hospital, Inc. is a Class C member of each foundation.