

Commonwealth Care Alliance

Women's Health

Colleen Senterfitt, CNM

Women's Health Director

Improving care for people with disabilities and chronic health needs



CCA – Women’s Health Focus Areas

- Cervical cancer screening
- Breast cancer screening
- Maternity care
 - Entry to prenatal care
 - Postpartum visit

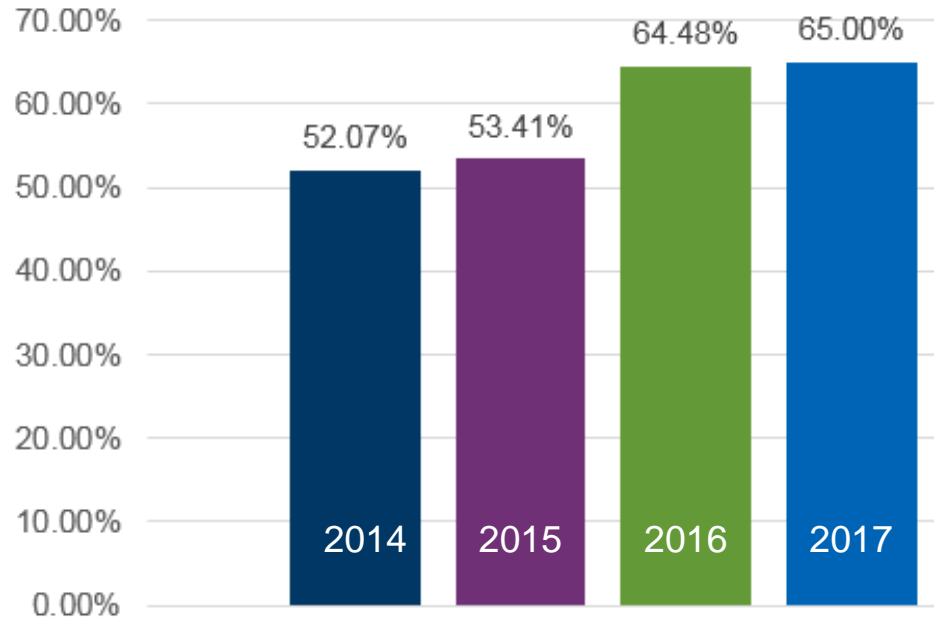
HEDIS Measures

Cervical Cancer Screening

HEDIS Measure

Pap test every 3 years
or
Pap with HPV test every
5 years

CCA Cervical Cancer Screening Rates



Cervical Cancer Screening

CCA Activity

- Clinician & care partner education
- Gap Reports
- Collaboration with contracted providers
- CCC Women's Health Clinic
- Member outreach (*newsletter, calls, mailing*)

Barriers

- *Knowledge*
- *Pain*
- *Embarrassment*
- *Health status*
- *Access*

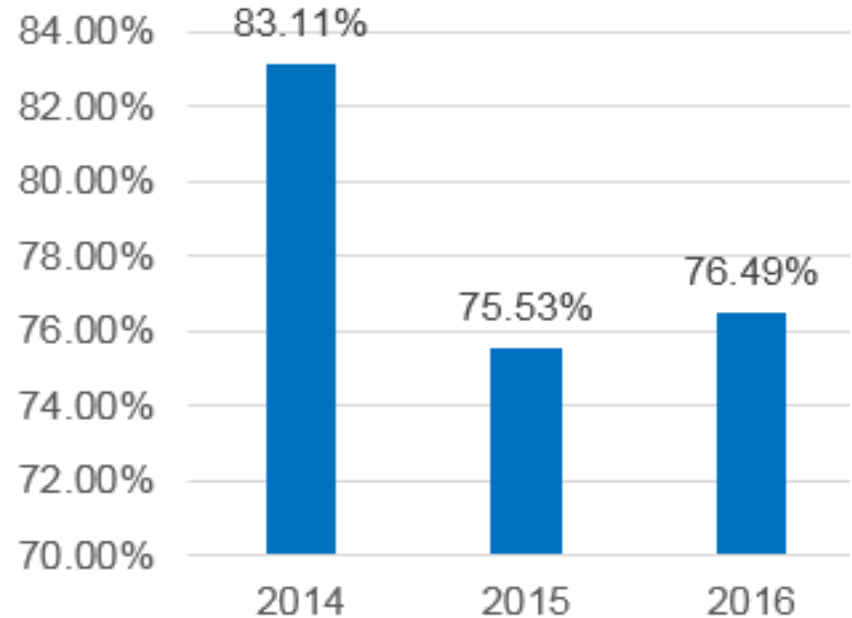
Breast Cancer Screening

HEDIS Measure

Mammogram every two years
women ages 50 and older

*Individual risk factors may indicate a
need for earlier or more frequent
screening*

CCA Breast Cancer Screening Rates



© 2018 Commonwealth Care Alliance. Confidential & Proprietary Information

Breast Cancer Screening

CCA Activity

- CCA clinician & care partner education
- Gap Reports
- Member outreach
 - *newsletter*
 - *call campaign*
 - *mailing*

Barriers

- *Knowledge*
- *Pain*
- *Embarrassment*
- *Health status*
- *Access*

Maternity Care

HEDIS Measure

Prenatal visit in first trimester or within 42 days of enrollment.

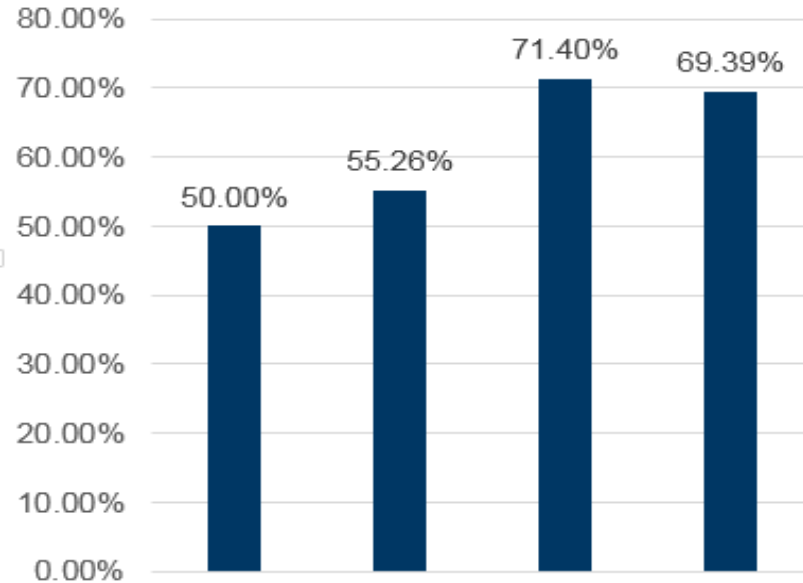
Postpartum visit between 21 and 56 days after delivery.

Barriers

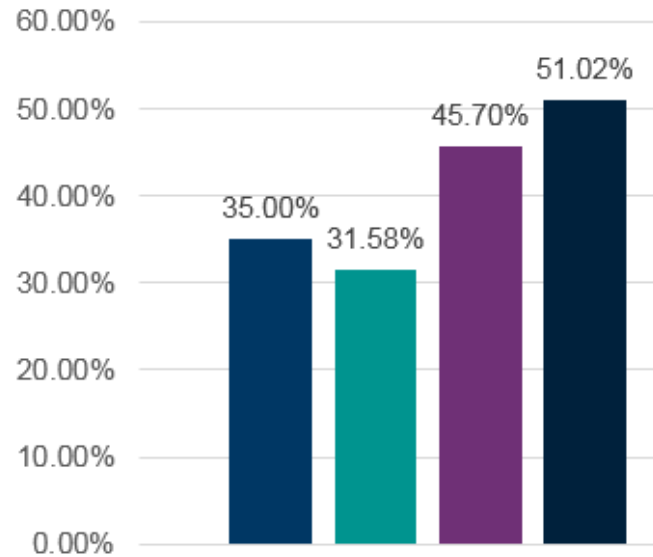
- *Access*
- *Knowledge*
- *Health Status*

Maternity Care – Performance Measures

Timeliness of Prenatal Care



Postpartum Care



Note: fewer than 40 births/year

Maternity Care - CCA In-House Doula Program



Doulas offer information and support throughout the maternity cycle: pregnancy, labor & birth and postpartum.

Benefits

- Lower preterm births
- Lower C-Section rates
- Higher breastfeeding
- Higher satisfaction with care

Women's Health - Other Topics We Care About



- Sexual health
- LGBTQ support and sensitivity
- Trauma-informed care
- Family planning
- Preconception counseling
- Domestic violence

Contact Information

Colleen Senterfitt

Director, Women's Health

csenterfitt@commonwealthcare.org