



Coastal Wetlands Resources For Building Officials

Dartmouth West

**Delineation of Coastal Resource Areas
is determined by the issuing authority,
pursuant to 310CMR 10.00 (Wetlands
Protection Act Regulations)**

 **Coastal Wetlands Resource Areas
Other than Land Subject to Coastal
Storm Flowage (Coastal Flood Plain)**

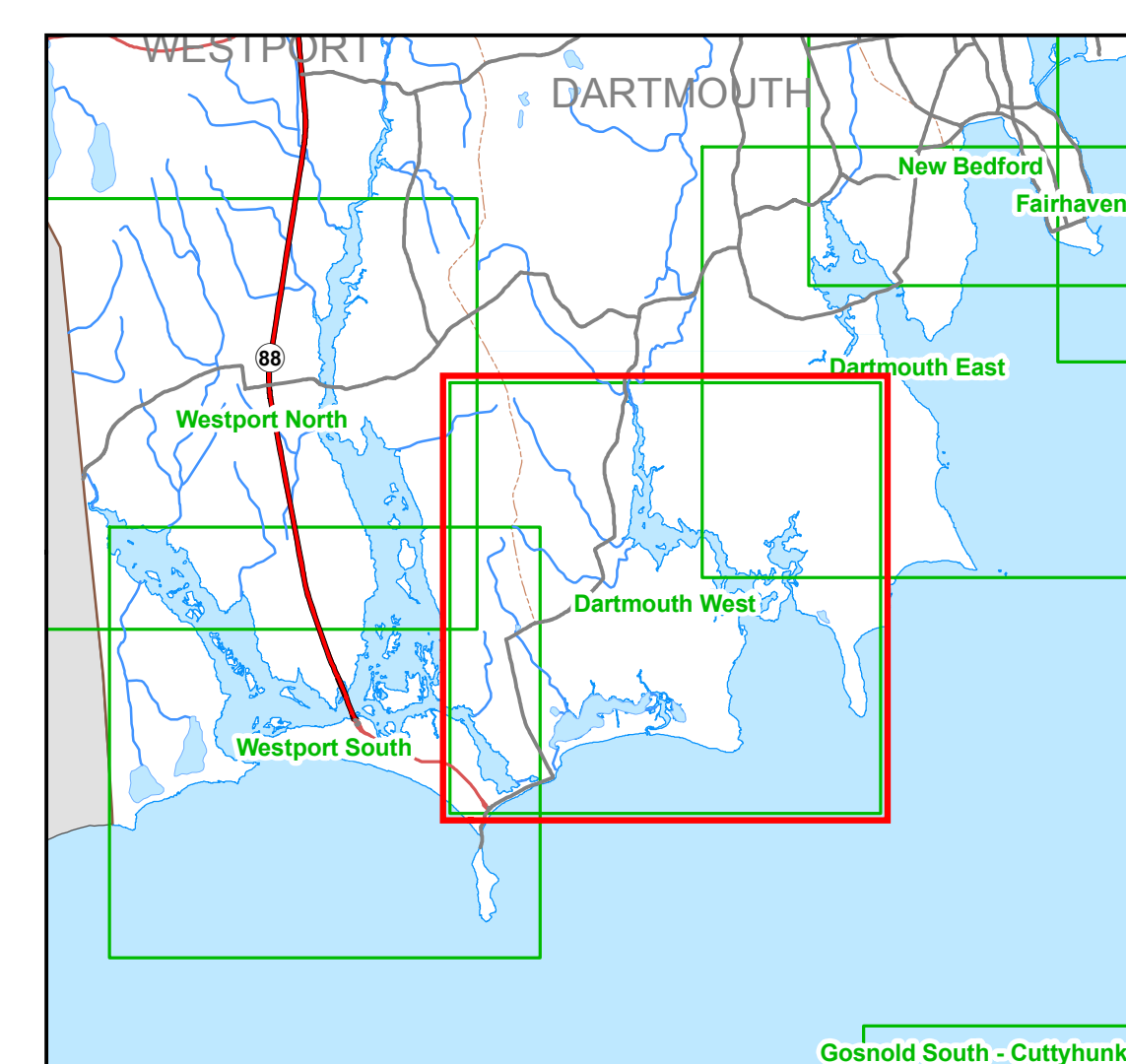
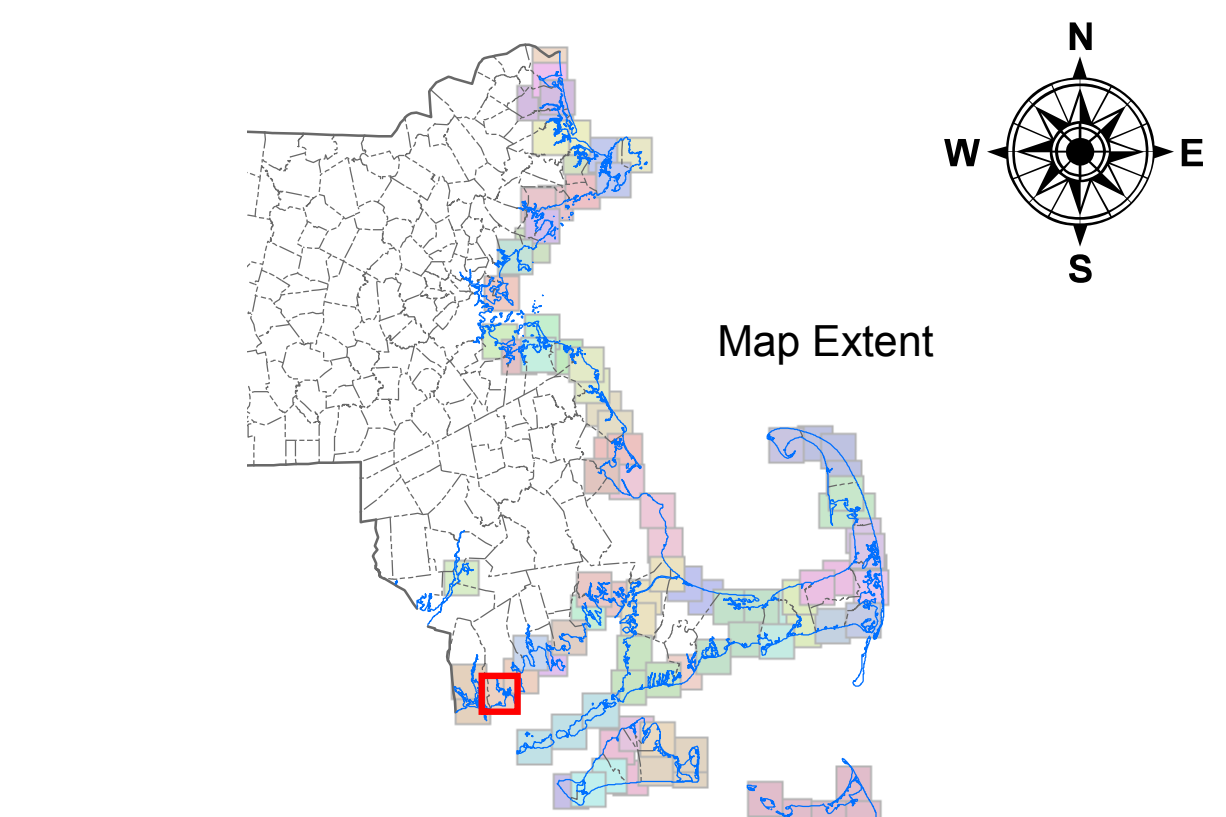
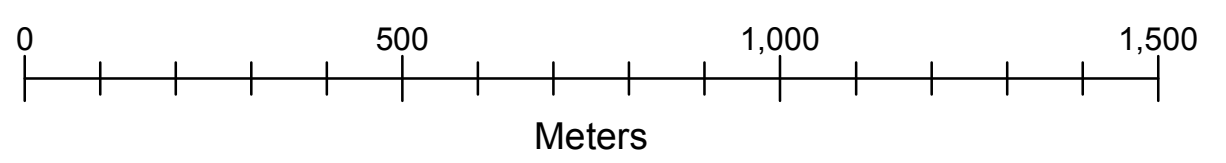
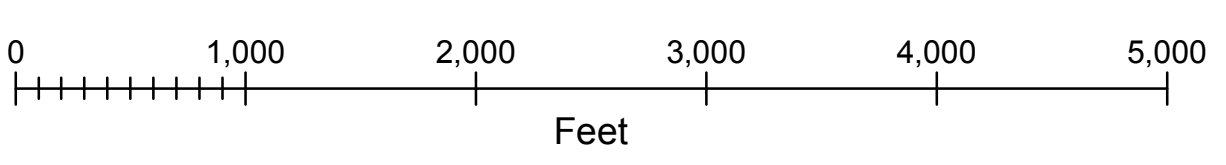
 **Municipal Boundaries**

Color OrthoPhoto Base Map Date April 2005

Coordinates shown are Mass State Plane NAD83 Feet, FIPS Zone 2001

Map Scale 1:10,000

1 Inch = 835 Feet or 255 Meters



Actual map extent shown in **RED**



Deval Patrick
Governor
Ian Bowles
Secretary of Energy and
Environmental Affairs

For more information on the data and imagery shown on this
map visit the MassGIS website at <http://mass.gov/mgis>

Map produced by the MassDEP GIS Program - Robert Hames, Sr GIS Analyst
G:\MAPS\MAP DOCUMENTS\BBSR_TOWN_SERIES.MXD

May 20, 2008