

Coastal Wetlands Resources For Building Officials

Ipswich East

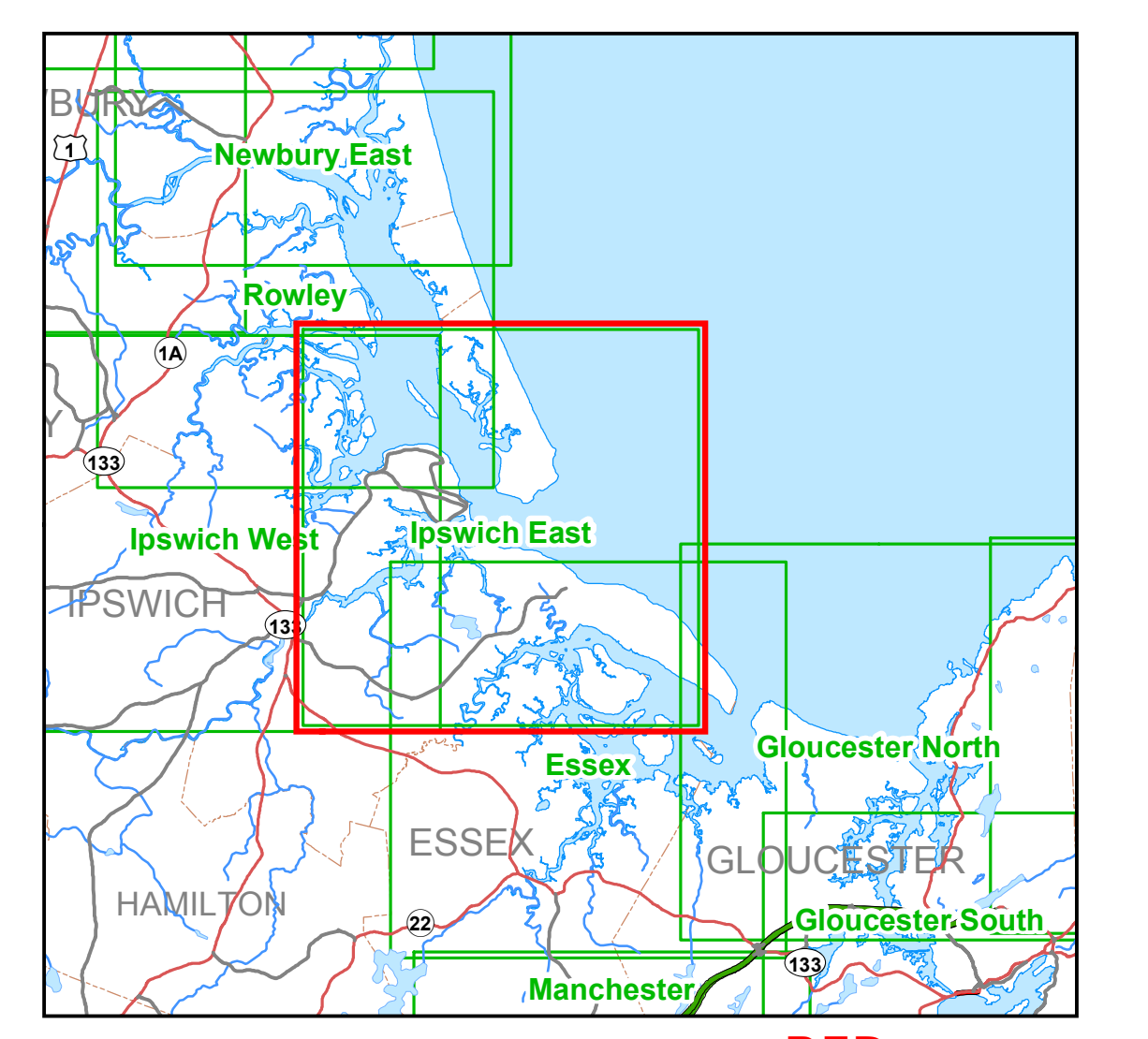
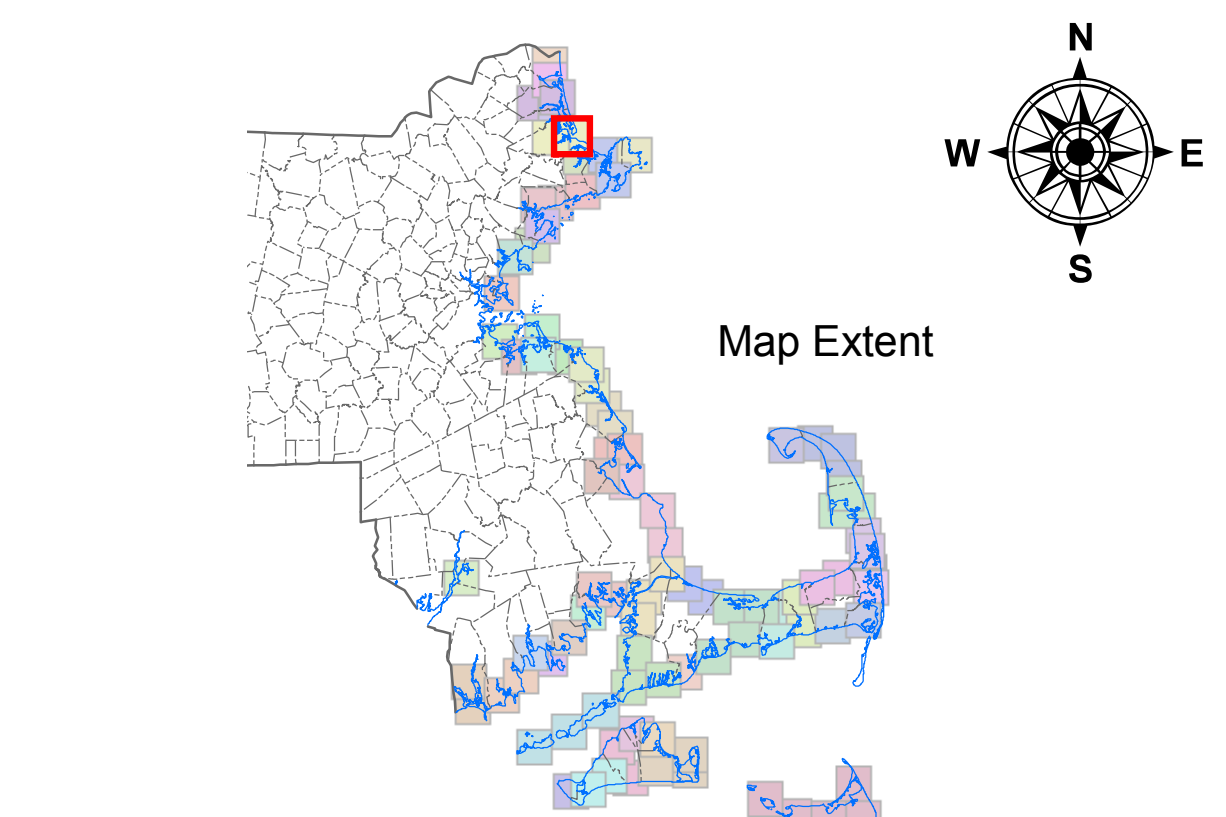
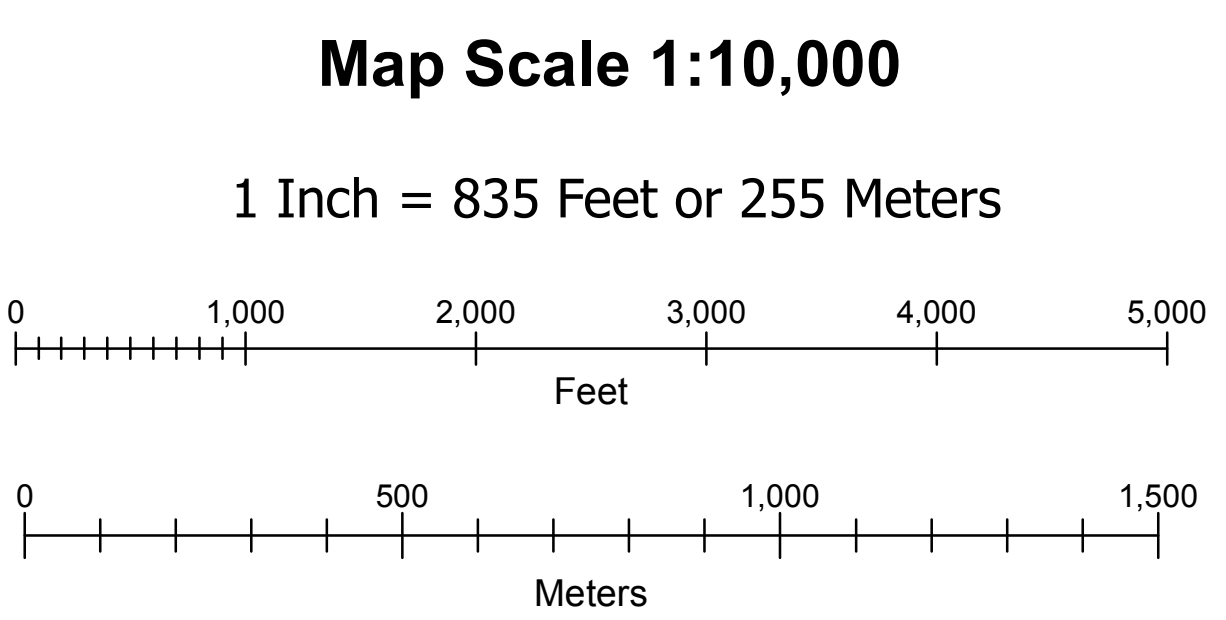
Delineation of Coastal Resource Areas is determined by the issuing authority, pursuant to 310CMR 10.00 (Wetlands Protection Act Regulations)

 Coastal Wetlands Resource Areas Other than Land Subject to Coastal Storm Flowage (Coastal Flood Plain)

 Municipal Boundaries

Color OrthoPhoto Base Map Date April 2005

Coordinates shown are Mass State Plane NAD83 Feet, FIPS Zone 2001





Massachusetts Department of Environmental Protection



Office of Geographic and Environmental Information
Massachusetts Executive Office of Energy & Environmental Affairs



Deval Patrick
Governor
Ian Bowles
Secretary of Energy and Environmental Affairs

For more information on the data and imagery shown on this map visit the MassGIS website at <http://mass.gov/mgis>

Map produced by the MassDEP GIS Program - Robert Hames, Sr GIS Analyst
G:\MAPS\MAP DOCUMENTS\BBSR_TOWN_SERIES.MXD

May 14, 2008