

Coastal Wetlands Resources For Building Officials

Marion

Delineation of Coastal Resource Areas is determined by the issuing authority, pursuant to 310CMR 10.00 (Wetlands Protection Act Regulations)

 Coastal Wetlands Resource Areas Other than Land Subject to Coastal Storm Flowage (Coastal Flood Plain)

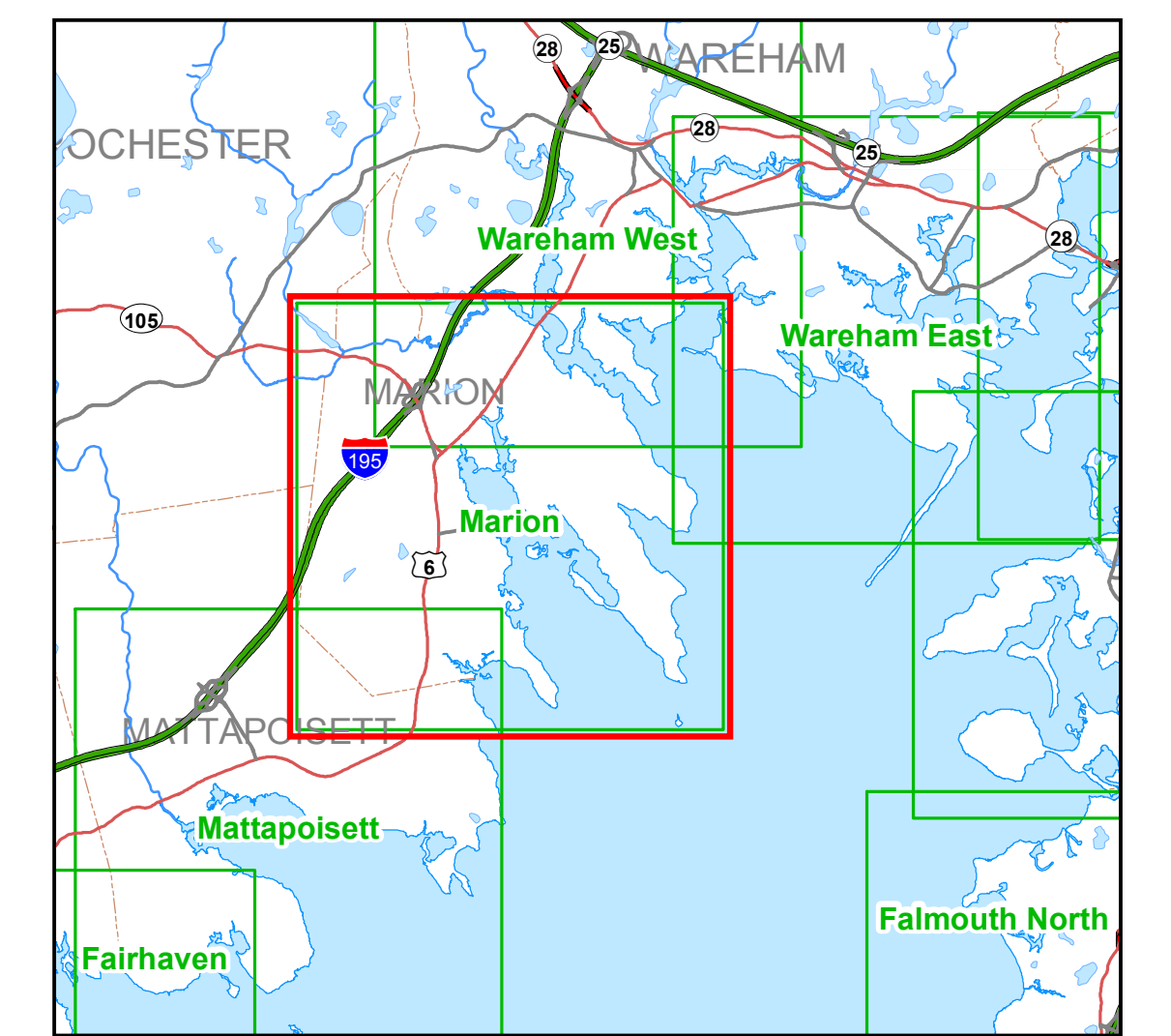
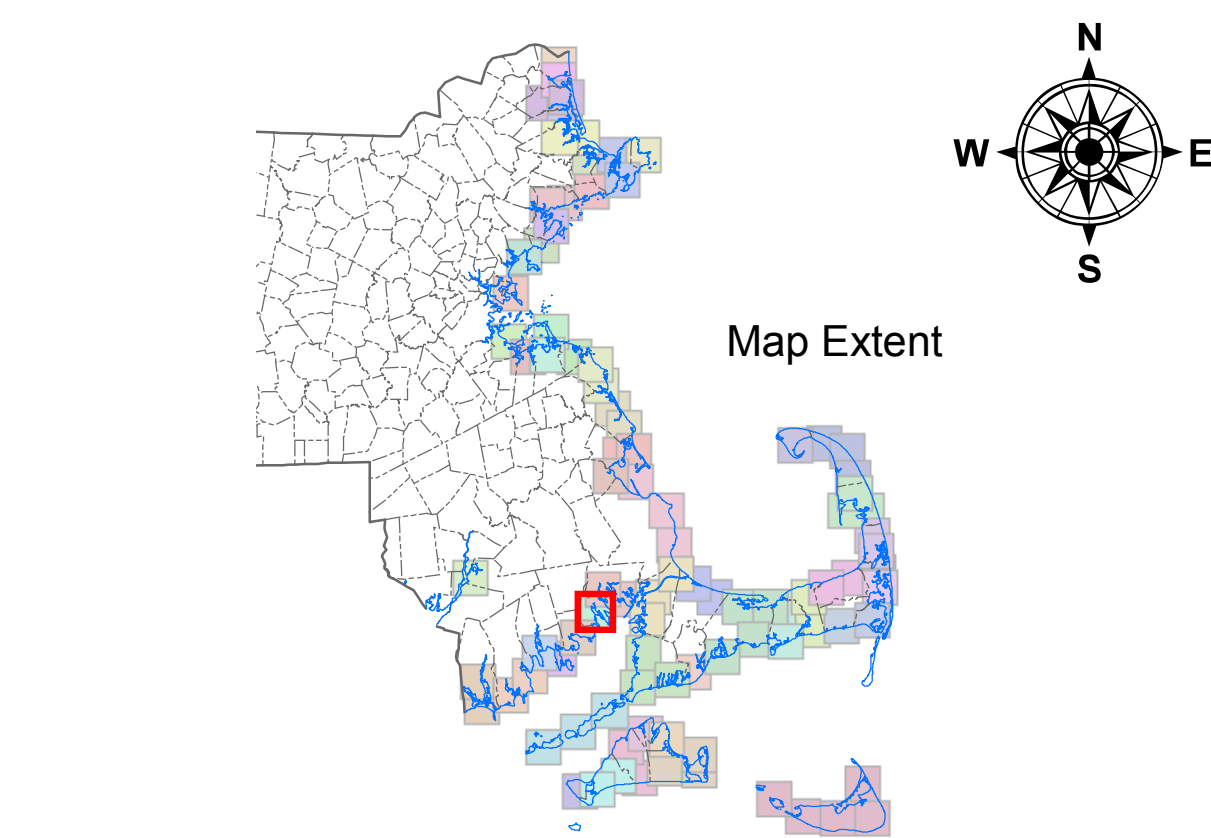
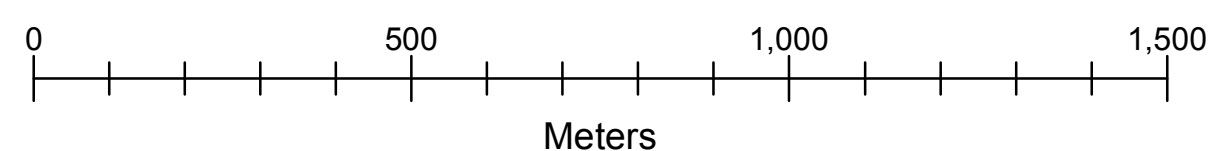
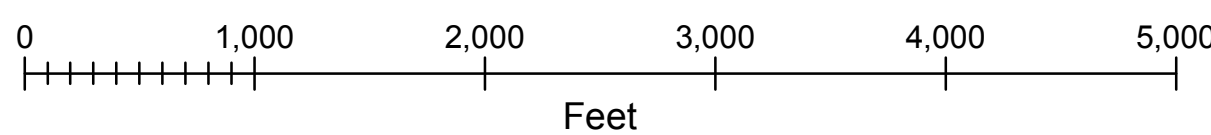
 Municipal Boundaries

Color OrthoPhoto Base Map Date April 2005

Coordinates shown are Mass State Plane NAD83 Feet, FIPS Zone 2001

Map Scale 1:10,000

1 Inch = 835 Feet or 255 Meters



For more information on the data and imagery shown on this map visit the MassGIS website at <http://mass.gov/mgis>

Map produced by the MassDEP GIS Program - Robert Hames, Sr GIS Analyst
G:\MAPS\MAP DOCUMENTS\BBSR_TOWN_SERIES.MXD

May 14, 2008