

Coastal Wetlands Resources For Building Officials

Revere - Saugus

**Delineation of Coastal Resource Areas
is determined by the issuing authority,
pursuant to 310CMR 10.00 (Wetlands
Protection Act Regulations)**

 Coastal Wetlands Resource Areas
Other than Land Subject to Coastal
Storm Flowage (Coastal Flood Plain)

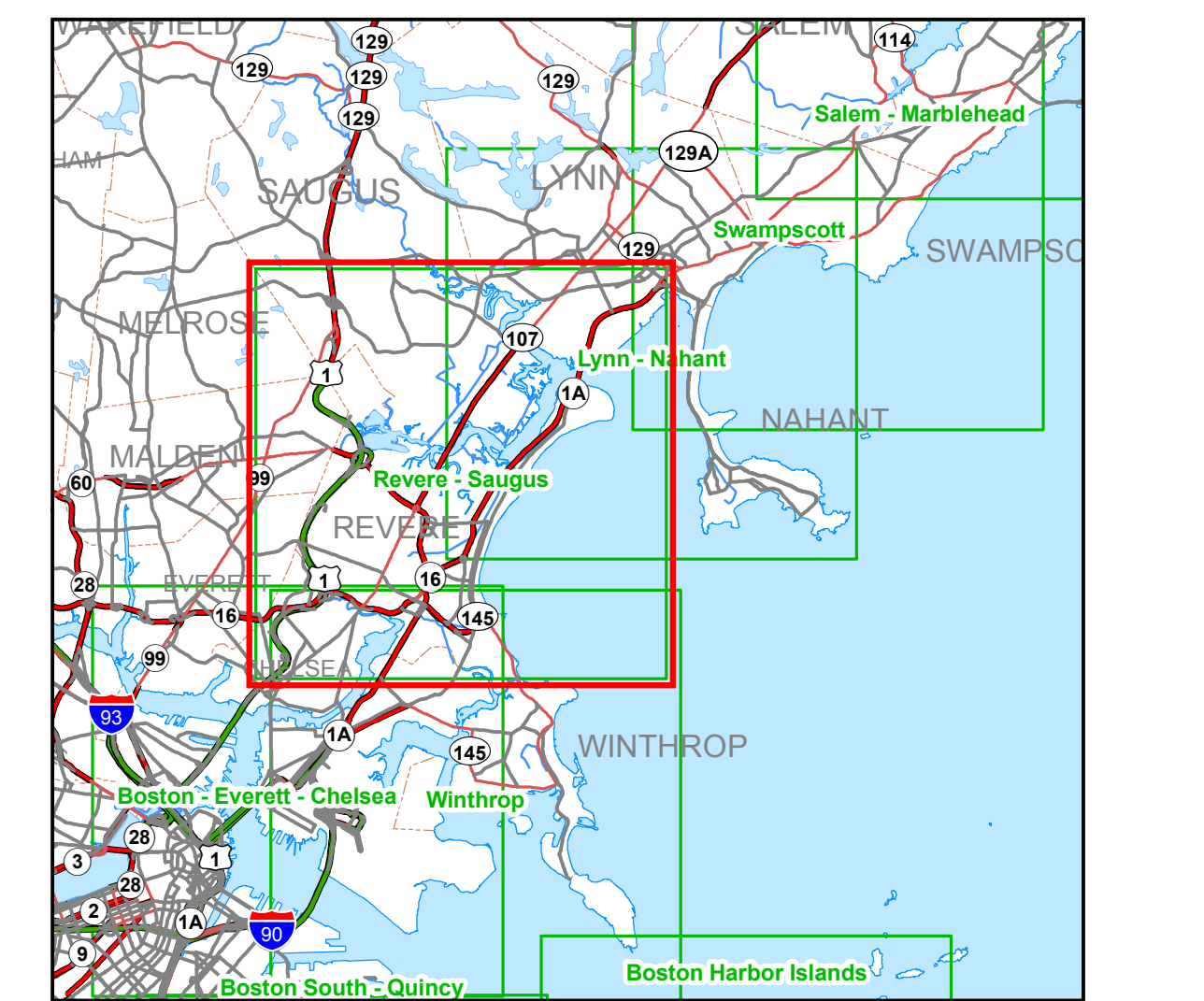
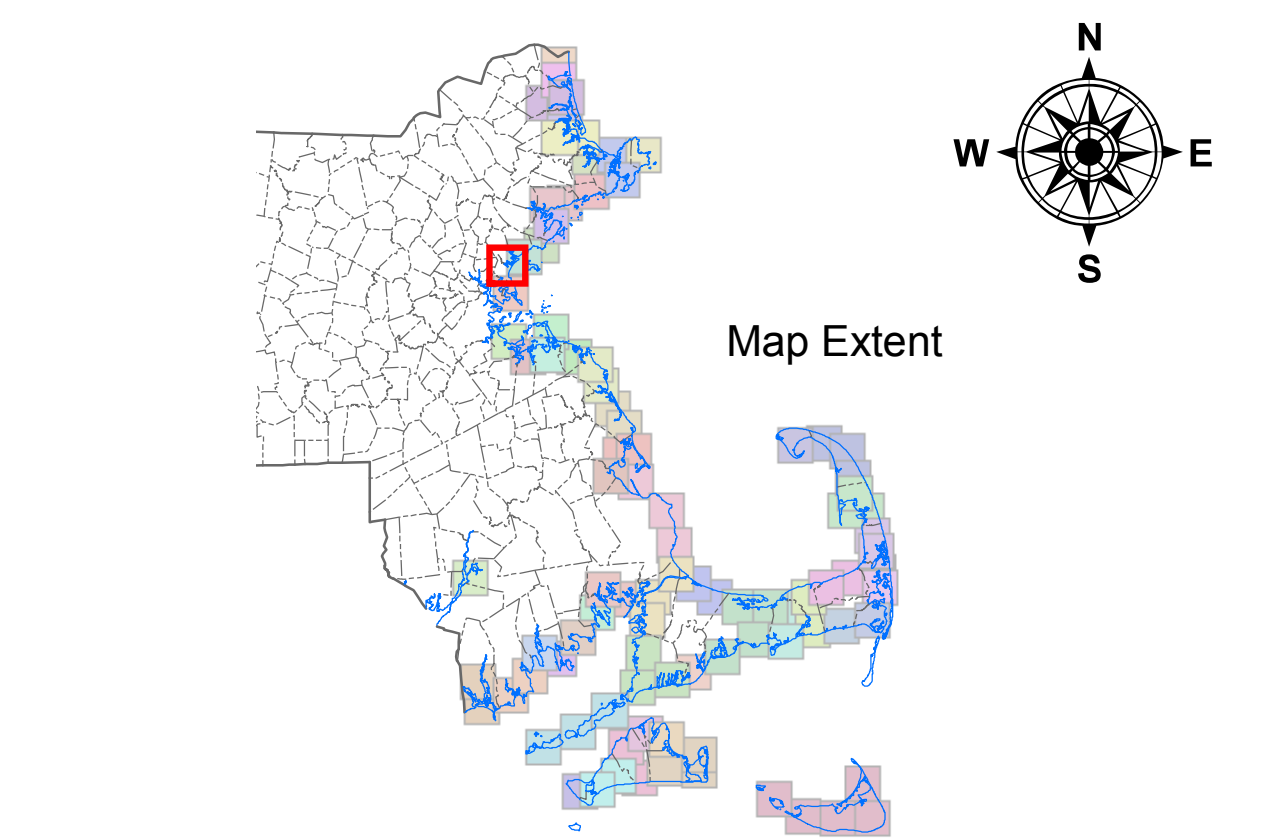
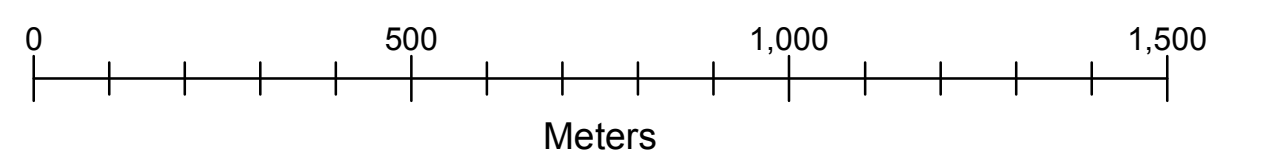
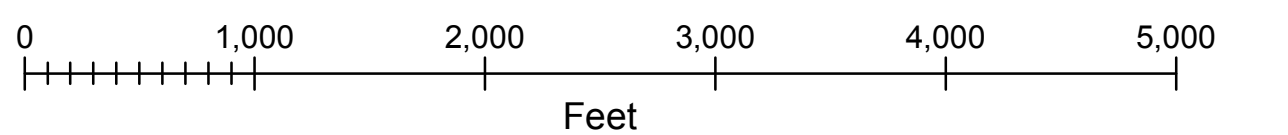
 Municipal Boundaries

Color OrthoPhoto Base Map Date April 2005

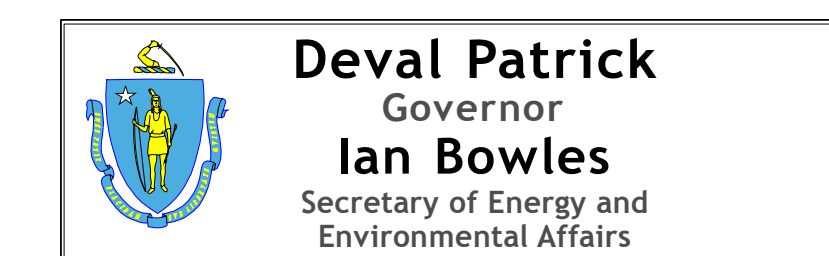
Coordinates shown are Mass State Plane NAD83 Feet, FIPS Zone 2001

Map Scale 1:10,000

1 Inch = 835 Feet or 255 Meters



Actual map extent shown in **RED**



For more information on the data and imagery shown on this
map visit the MassGIS website at <http://mass.gov/mgis>

Map produced by the MassDEP GIS Program - Robert Hames, Sr GIS Analyst
G:\MAPS\MAP DOCUMENTS\BBSRS_TOWN_SERIES.MXD

May 20, 2008